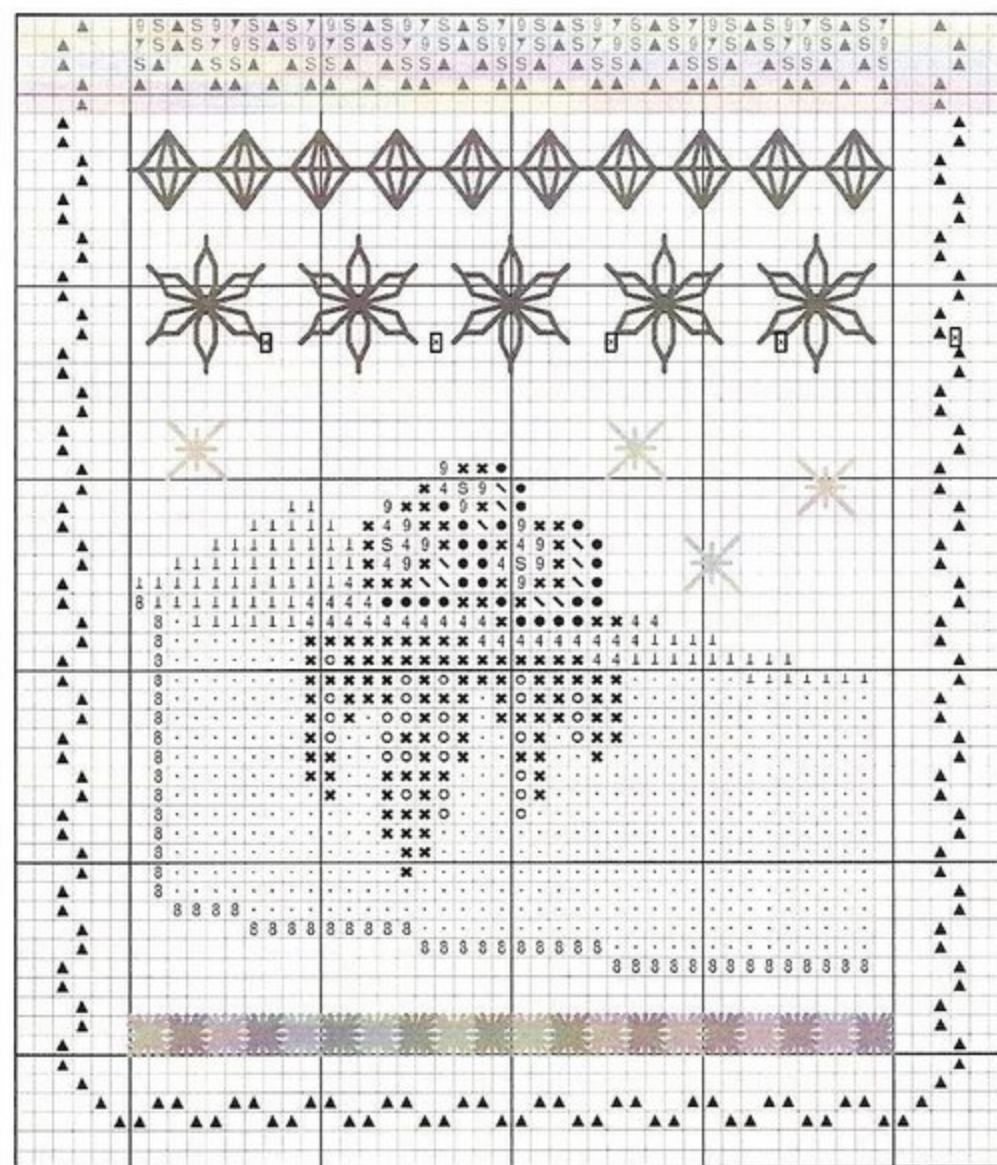
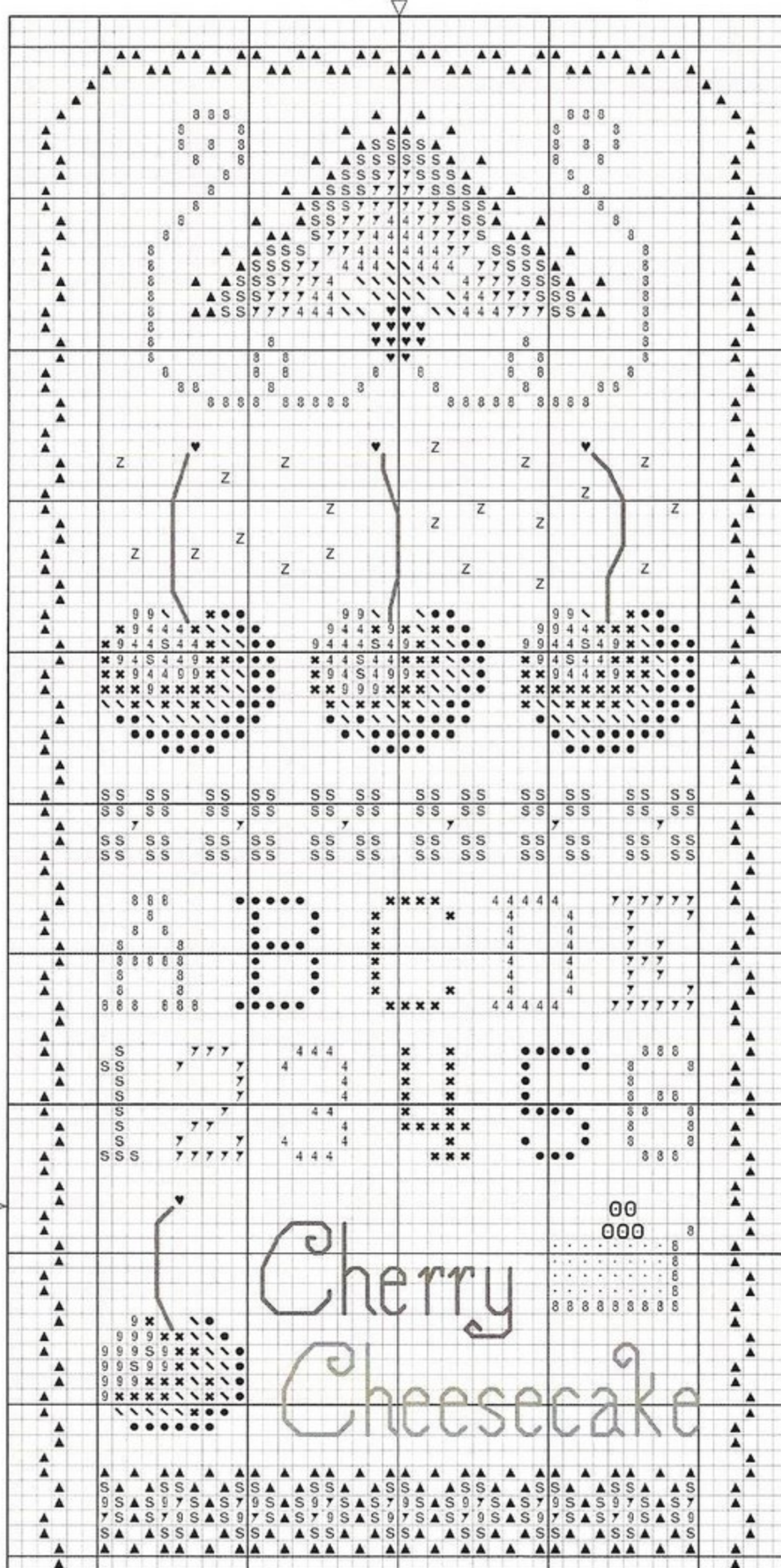


Cherry Cheesecake Sampler

© 2005 May only be reproduced for enlargement for personal use.

by Casey Buonaugurio

Stitch count: 48W x 154H
Fabric: Jobelan Coffee 28 ct.
Stitched two over two.



(Shaded area indicates overlap.)

Instructions:

All cross stitching is done with two strands of floss over two fabric threads.

All cherry stems are backstitched using two strands of 989.

“Cherry” is backstitched with two strands of 304.

“Cheesecake” is backstitched with two strands of 434.

Queen stitch is stitched over eight using two strands of 816.

Lazy daisy blossoms are stitched over 14 using two strands of 3713.

Double cross stitch stars above cheesecake are stitched over six with two strands of 5288.

Square eyelets are stitched over four with one strand. Alternate using 434 and 437.

Beading:

Iron out hoop marks before beading and bead without using hoop. With beading needle and red floss, attach 5-6 beads in a cluster on top of small cheesecake.

After completing lazy daisy cherry blossoms, use one strand red floss to attach one bead in center of each flower. This is done by securing the thread on the back, then coming up through the center of the flower, sliding the bead onto the needle and thread then bring the needle down through the same center hole.

DMC Floss

- ▲ White
 - 8 434 Brown lt.
 - S 225 Shell pink lt.
 - 7 760 Salmon
 - 4 335 Rose
 - ∖ 816 Garnet
 - ♥ 989 Forest green
 - Z 5288 Metallic pink
 - 9 3831 Raspberry dk.
 - × 304 Christmas red
 - 814 Garnet
 - 712 Cream
 - 1 437 Tan lt.
 - Blend 335 and 304
- Also- 3713 Salmon vy lt.

Mill Hill Beads

- 968 Red

