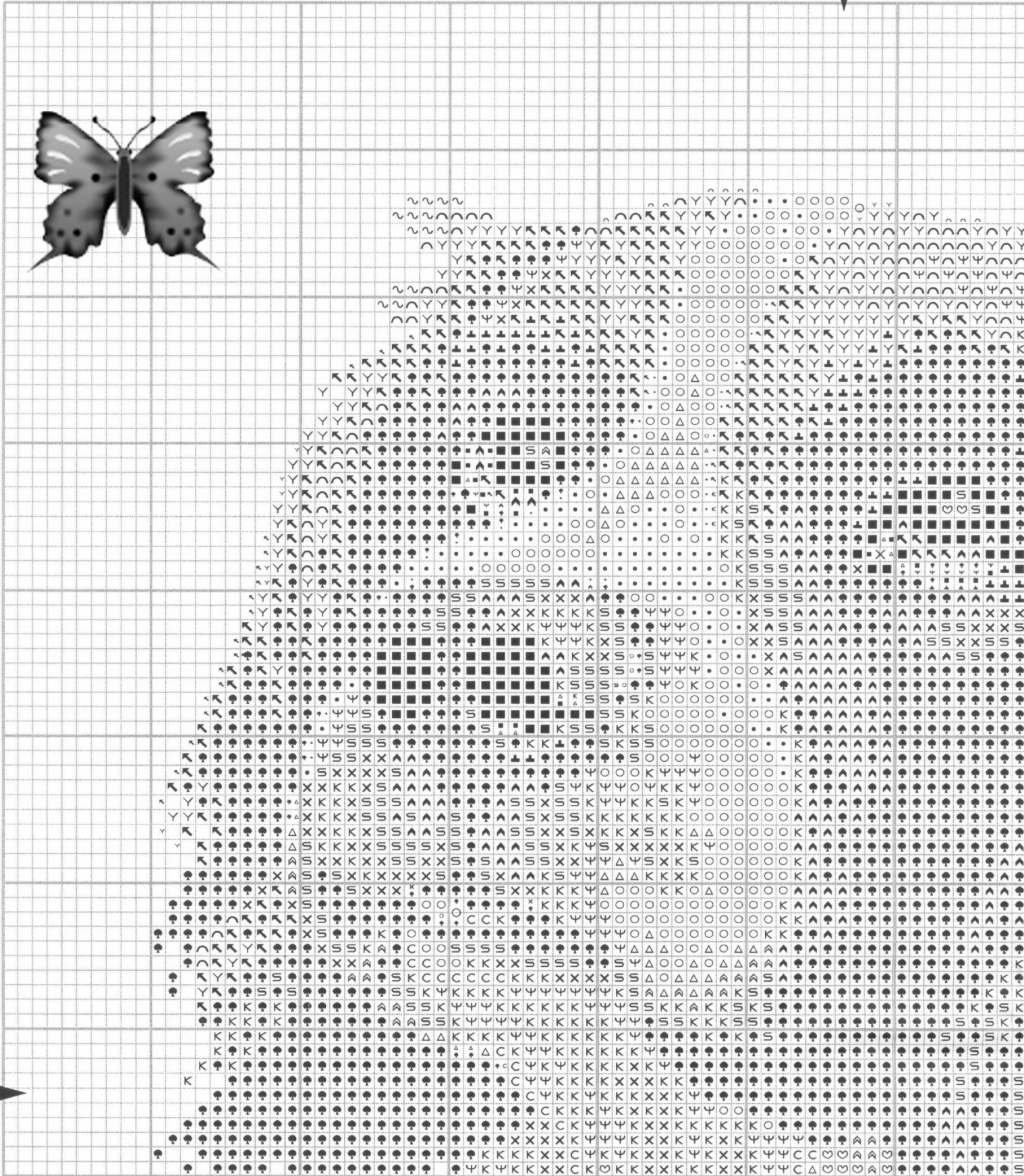
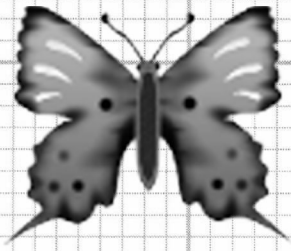
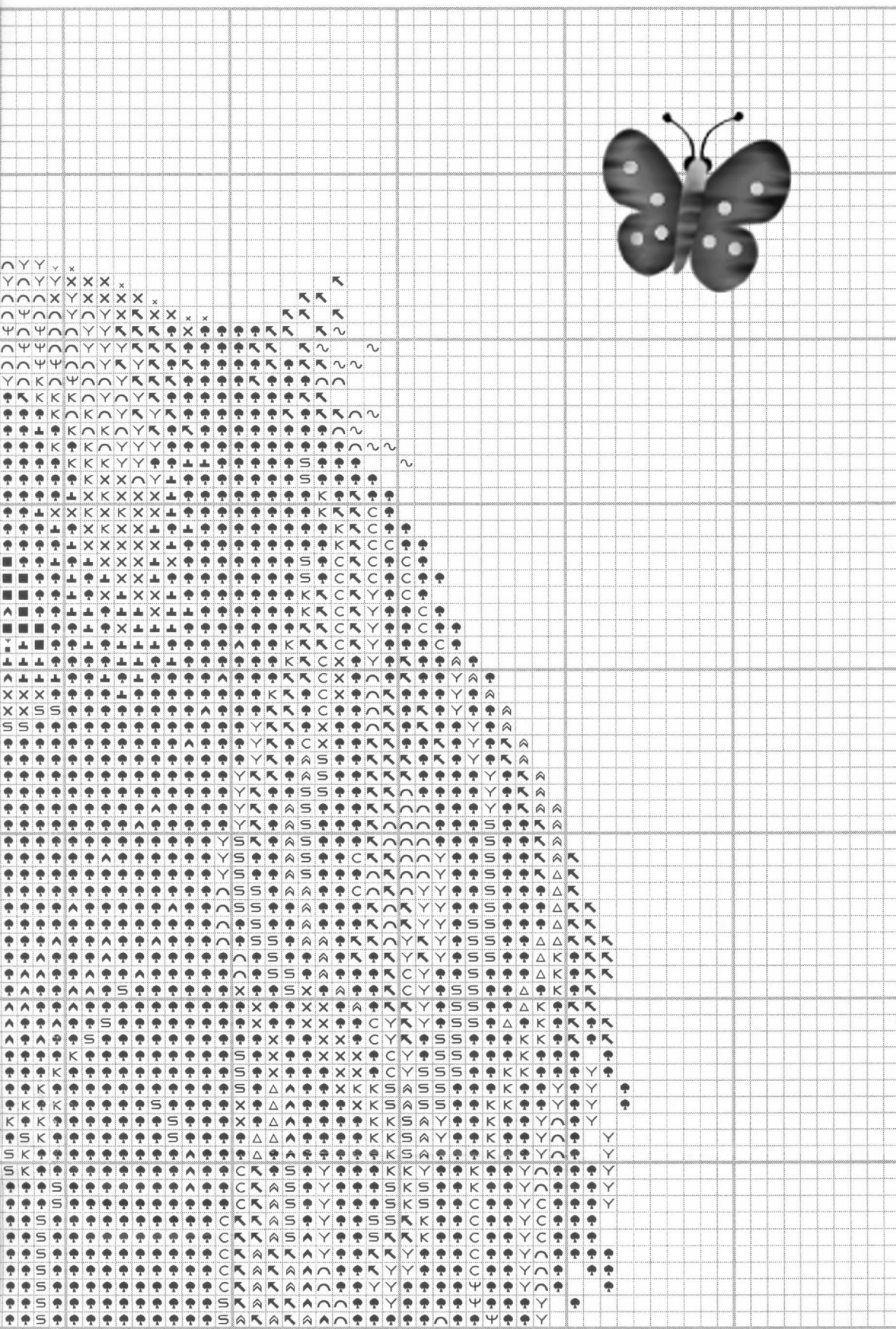


# SAMUEL CROSS STITCH SHEET 1





To protect these charts tape along the folds using transparent tape. Numbers refer to DMC colours.

**Cross stitch** using two strands one colour.

- C 168 (mouse grey)
- ↖ 300 (mahogany)
- Y 301 (brown)
- 310 (black)
- ^ 318 (granite)
- ~ 402 (light brown)
- Δ 415 (pearl grey)
- Ψ 452 (shell grey)
- S 535 (dark grey)
- 762 (pale grey)
- ⊕ 779 (dark brown)
- ^ 838 (dark wood)
- ♡ 927 (oyster)
- ♣ 3371 (burnt coffee)
- ∩ 3776 (light mahogany)
- X 3860 (deep shell)
- K 3861 (deep mauve)
- 3865 (off white)

Thread quantities listed below are for six stranded, 61cm (2ft) lengths of DMC stranded cotton

DMC	Qty.	DMC	Qty.
168	3	762	5
300	4	779	1
301	2	838	3
310	2	927	4
318	3	3771	20
402	1	3776	2
415	3	3860	2
452	3	3861	4
535	3	3865	2

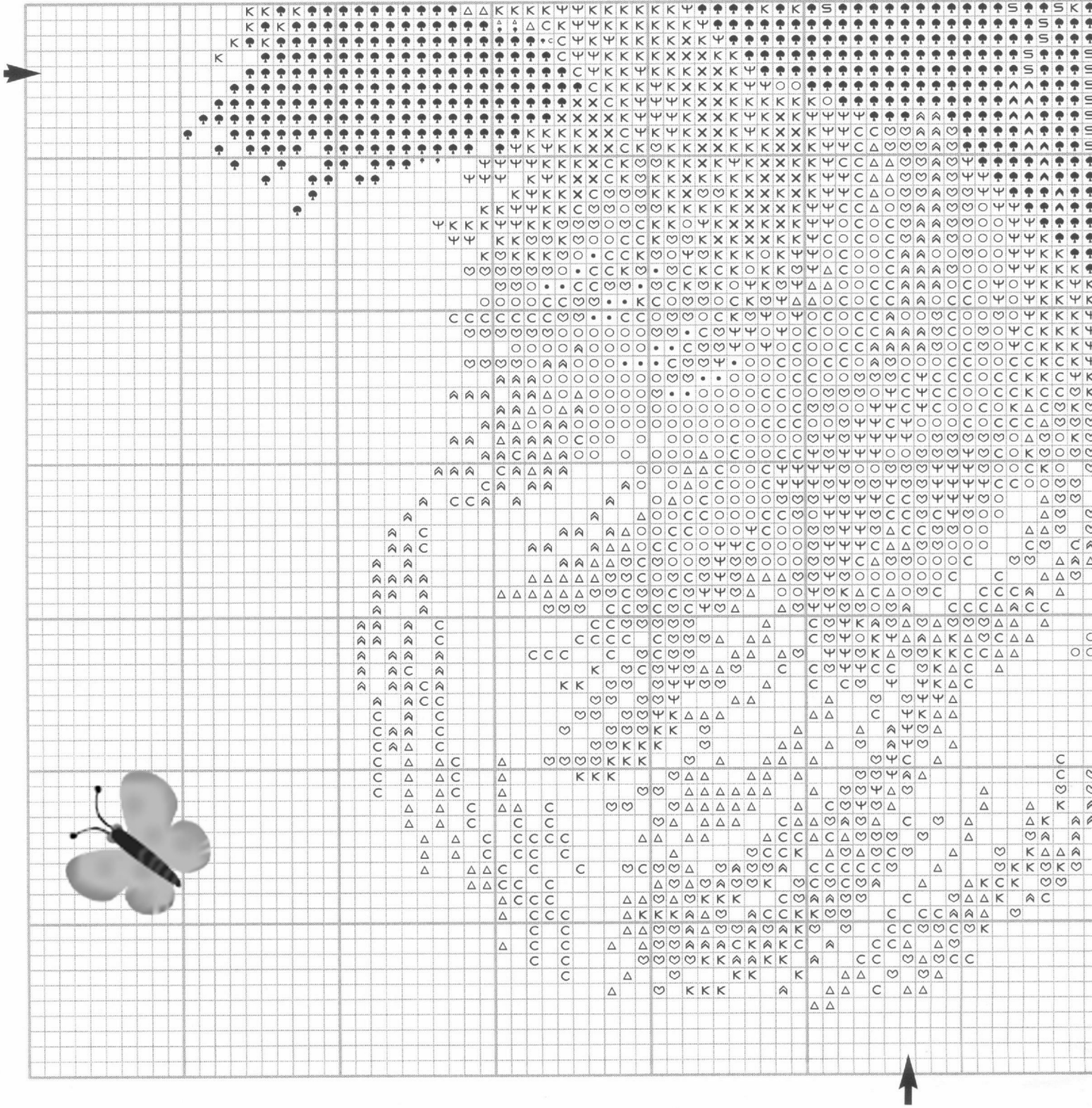
## HERITAGE STITCHCRAFT

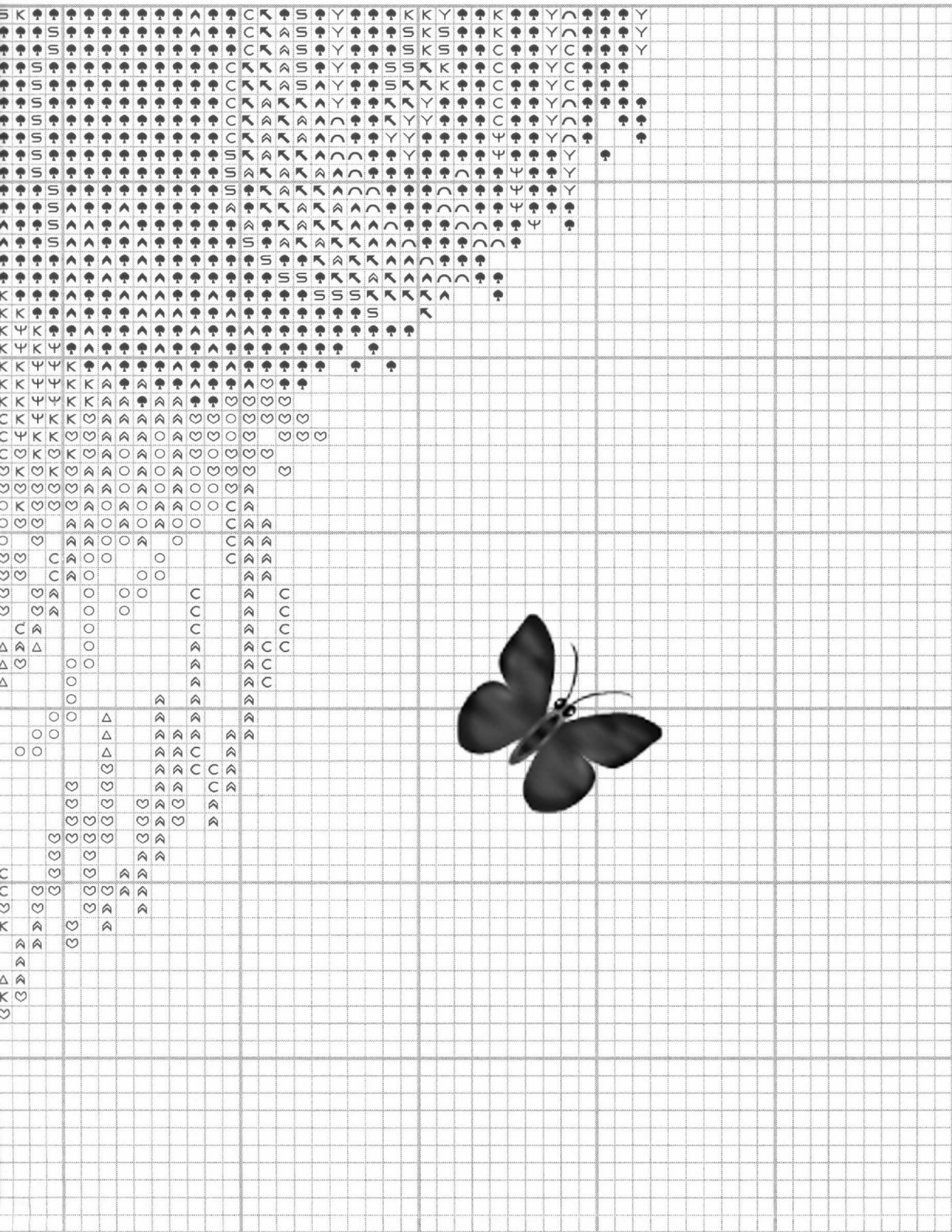
© Copyright 2006



Overlap with sheet 2

# SAMUEL CROSS STITCH SHEET 2





To protect these charts tape along the folds using transparent tape. Numbers refer to DMC colours.

**Cross stitch** using two strands of one colour.

- C 168 (mouse grey)
- ↖ 300 (mahogany)
- Y 301 (brown)
- 310 (black)
- ⤴ 318 (granite)
- ~ 402 (light brown)
- △ 415 (pearl grey)
- Ψ 452 (shell grey)
- S 535 (dark grey)
- 762 (pale grey)
- ⬆ 779 (dark brown)
- ♠ 838 (dark wood)
- ♥ 927 (oyster)
- ☕ 3371 (burnt coffee)
- ☾ 3776 (light mahogany)
- X 3860 (deep shell)
- K 3861 (deep mauve)
- 3865 (off white)

Thread quantities listed below are for six stranded, 61cm (2ft) lengths of DMC stranded cotton

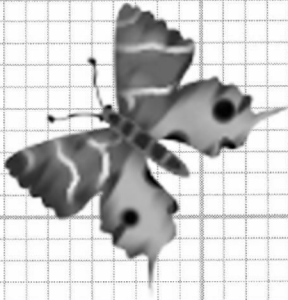
DMC	Qty.	DMC	Qty.
168	3	762	5
300	4	779	1
301	2	838	3
310	2	927	4
318	3	3771	20
402	1	3776	2
415	3	3860	2
452	3	3861	4
535	3	3865	2

**HERITAGE STITCHCRAFT**

© Copyright 2006



# SAMUEL OUTLINING SHEET 3



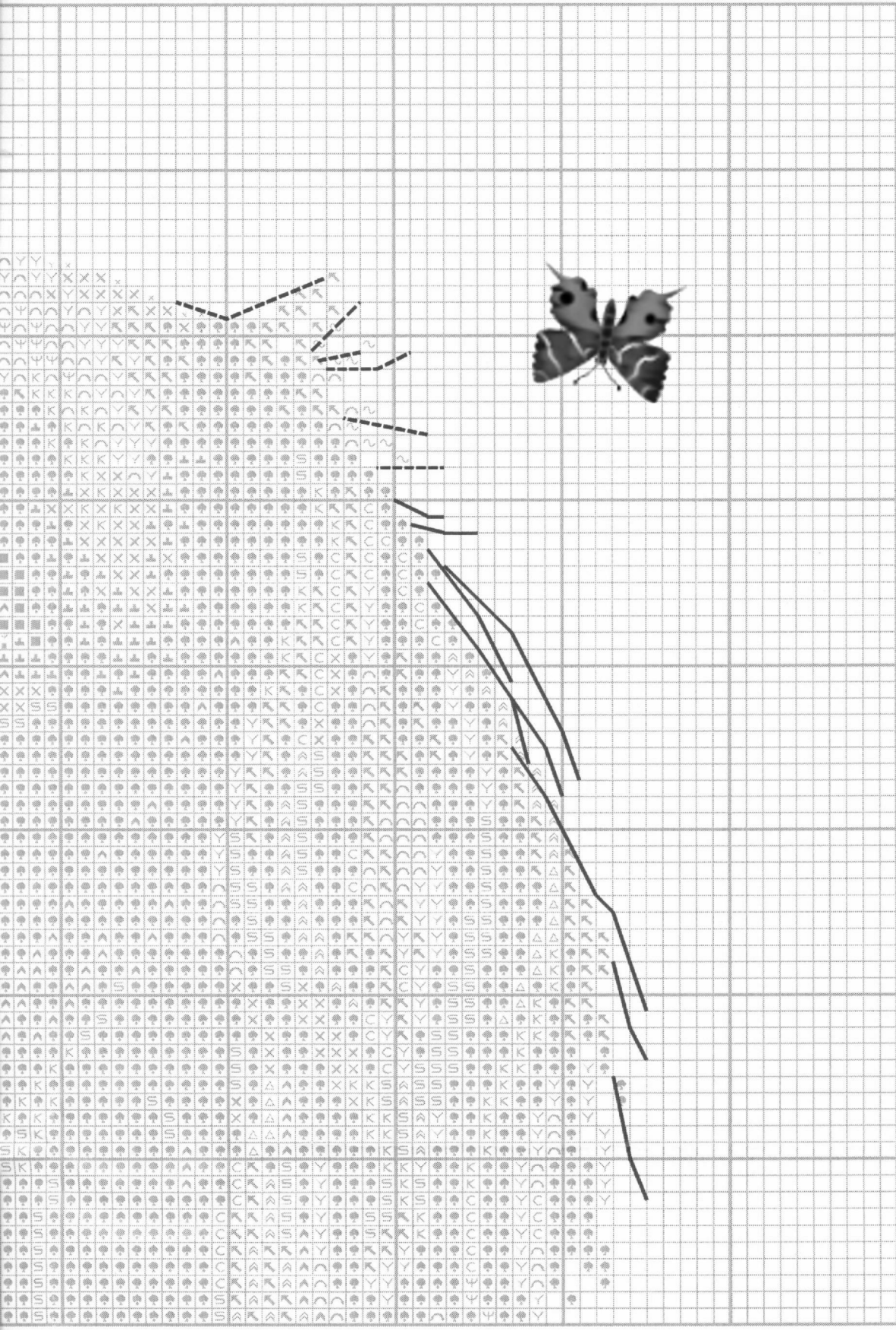
**Outlining** working in back stitch and long stitch, using one strand of thread.

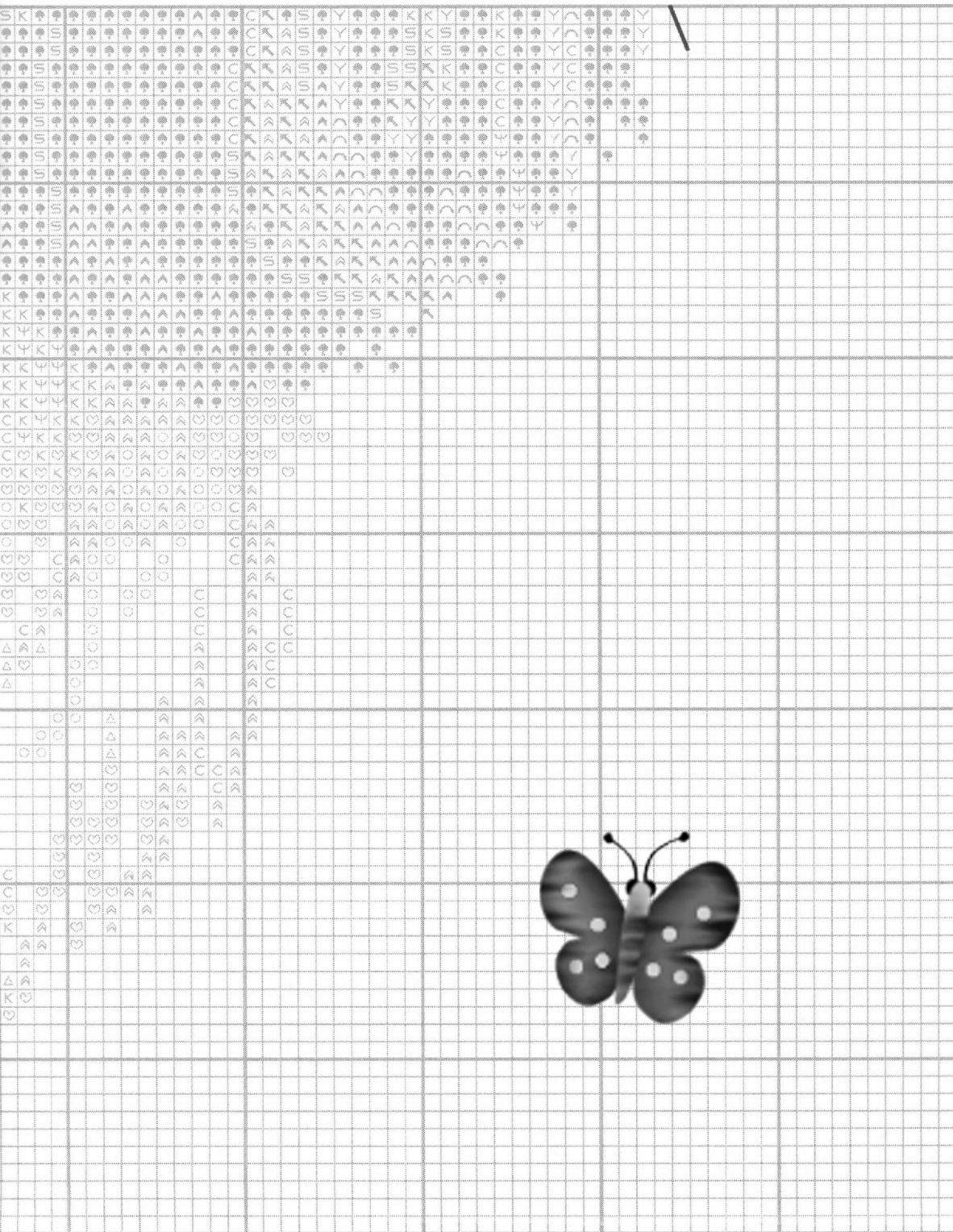
**Whiskers**

-----452 (shell grey)  
.....3865 (off white)

**Ears**

-----300 (mahogany)  
-----3371 (burnt coffee)





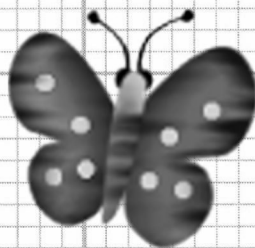
**Outlining** working in back stitch and long stitch, using one strand of thread.

**Whiskers**

- 452 (shell grey)
- .....3865 (off white)

**Ears**

- 300 (mahogany)
- 3371 (burnt coffee)



**HERITAGE STITCHCRAFT**

© Copyright 2006



# SAMUEL OUTLINING SHEET 4

This sheet is a large grid for outlining the character of Samuel. On the left side, there is a detailed illustration of a butterfly. The grid itself is filled with various symbols and letters, including 'K', 'C', 'A', 'O', 'X', 'S', 'F', 'B', 'G', 'D', and 'H'. Some symbols are arranged in patterns, such as a cluster of 'K's in the top left and a diagonal line of 'S's. There are also several dashed lines drawn across the grid, including a prominent one in the top right corner. The grid is intended for a child to trace and outline the character of Samuel based on these symbols.