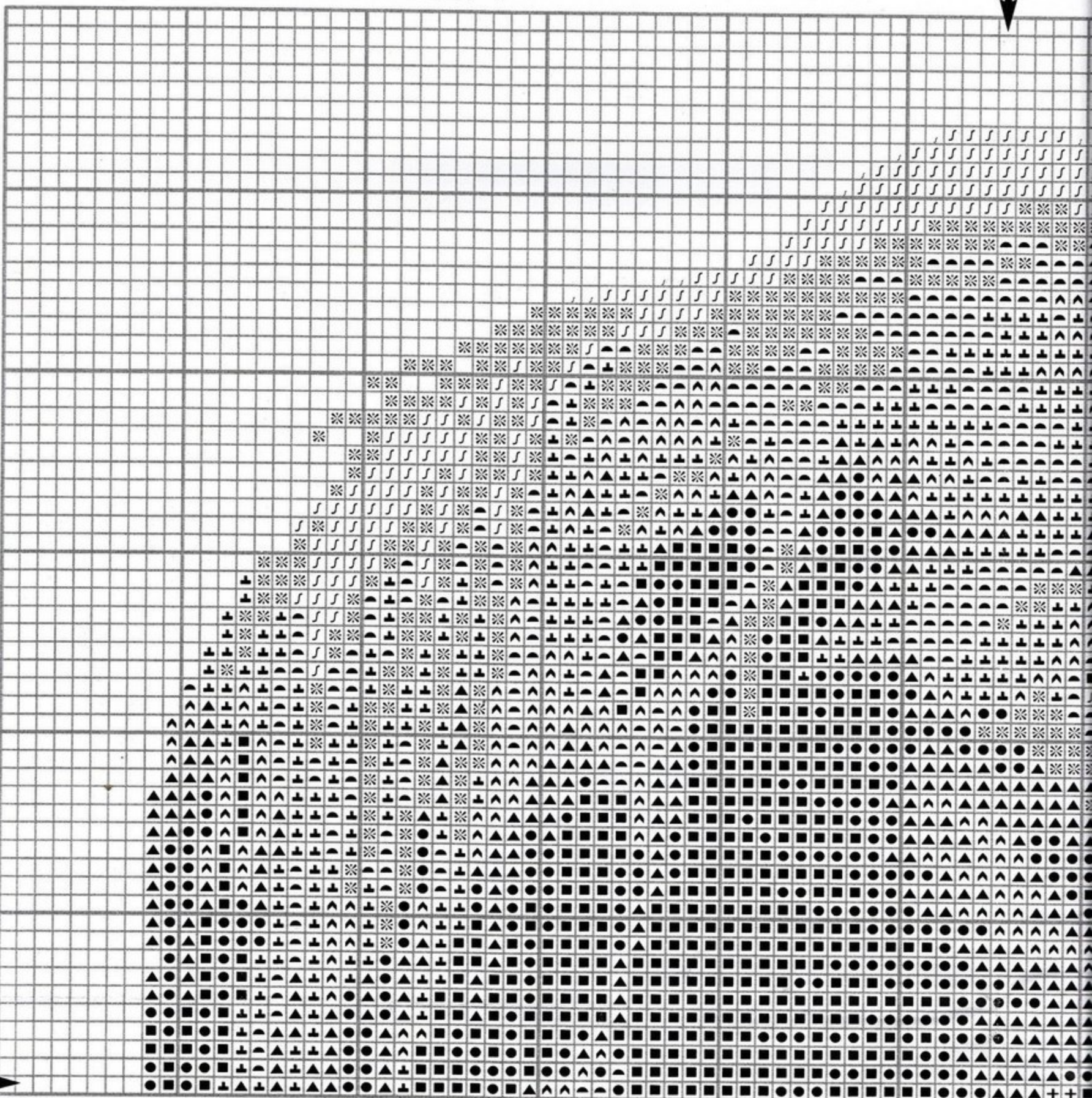


TODD CROSS STITCH SHEET 1



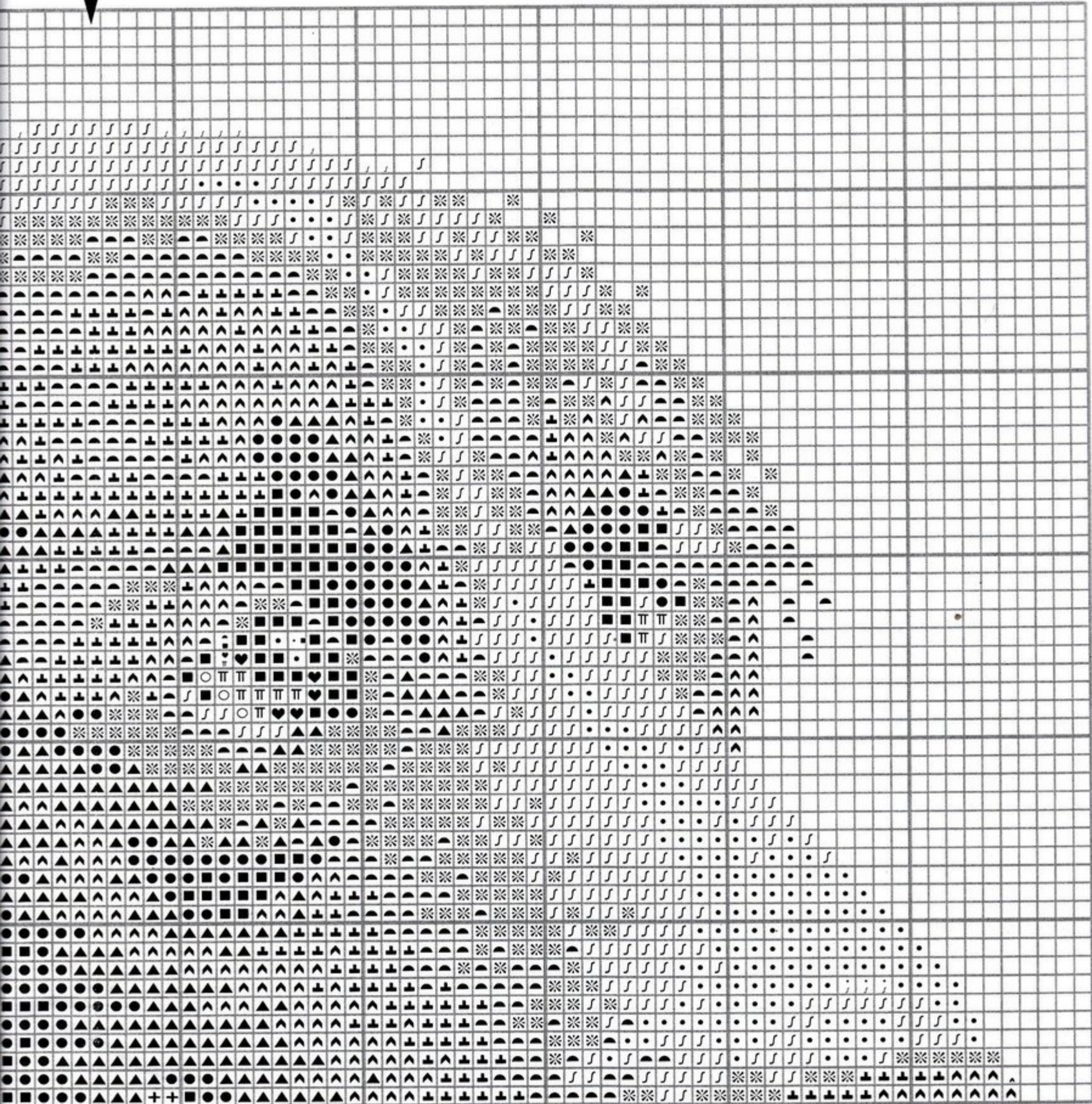
To protect these charts tape along the folds using transparent tape.

Thread quantities listed below are for six stranded, 61cm (2ft) lengths of DMC stranded cottons.

DMC	Qty	DMC	Qty	DMC	Qty
223	1	413	6	762	7
224	2	414	7	898	1
225	1	415	7	3721	1
310	7	434	1	3799	6
317	6	436	1	3865	8
318	6	739	1		

Numbers refer to DMC colours.

- Cross stitch using two strands of one colour.**
- ✦ 223 (dusty pink)
 - ✦ 224 (light dusty pink)
 - ✦ 225 (shell pink)
 - 310 (black)
 - ▲ 317 (steel grey)
 - ▲ 318 (granite)
 - ▲ 413 (iron grey)
 - ▲ 414 (lead)
 - ✦ 415 (chrome)
 - TT 434 (cigar)
 - 436 (light cigar)
 - △ 739 (cream)
 - ∩ 762 (pearl grey)
 - ♥ 898 (teak)
 - ◆ 3721 (earth pink)
 - 3799 (anthracite)
 - 3865 (white)



colours.

strands of one colour.

- T 434 (cigar)
- O 436 (light cigar)
- A 739 (cream)
- S 762 (pearl grey)
- H 898 (teak)
- D 3721 (earth pink)
- C 3799 (anthracite)
- 3865 (white)

Helpline

If you have any problems or require assistance in working this design, please contact:

Heritage Stitchcraft, Redbrook Lane,
Brereton, Rugeley, Staffs. WS15 1QU.
Phone 01889 575256

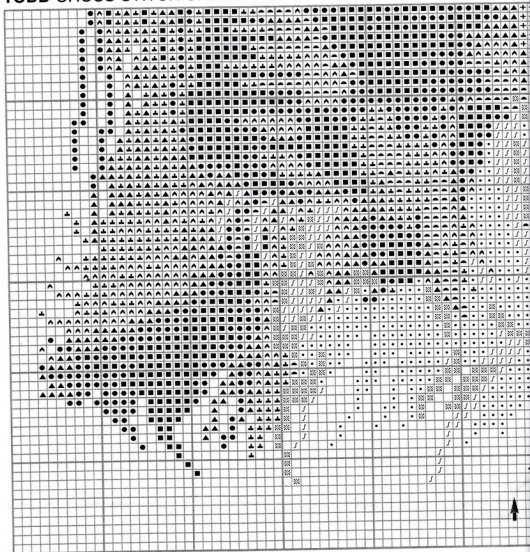
HERITAGE STITCHCRAFT

© Copyright 2007



vysivani.gallery.ru

TODD CROSS STITCH SHEET 2



To protect these charts tape along the folds using transparent tape.

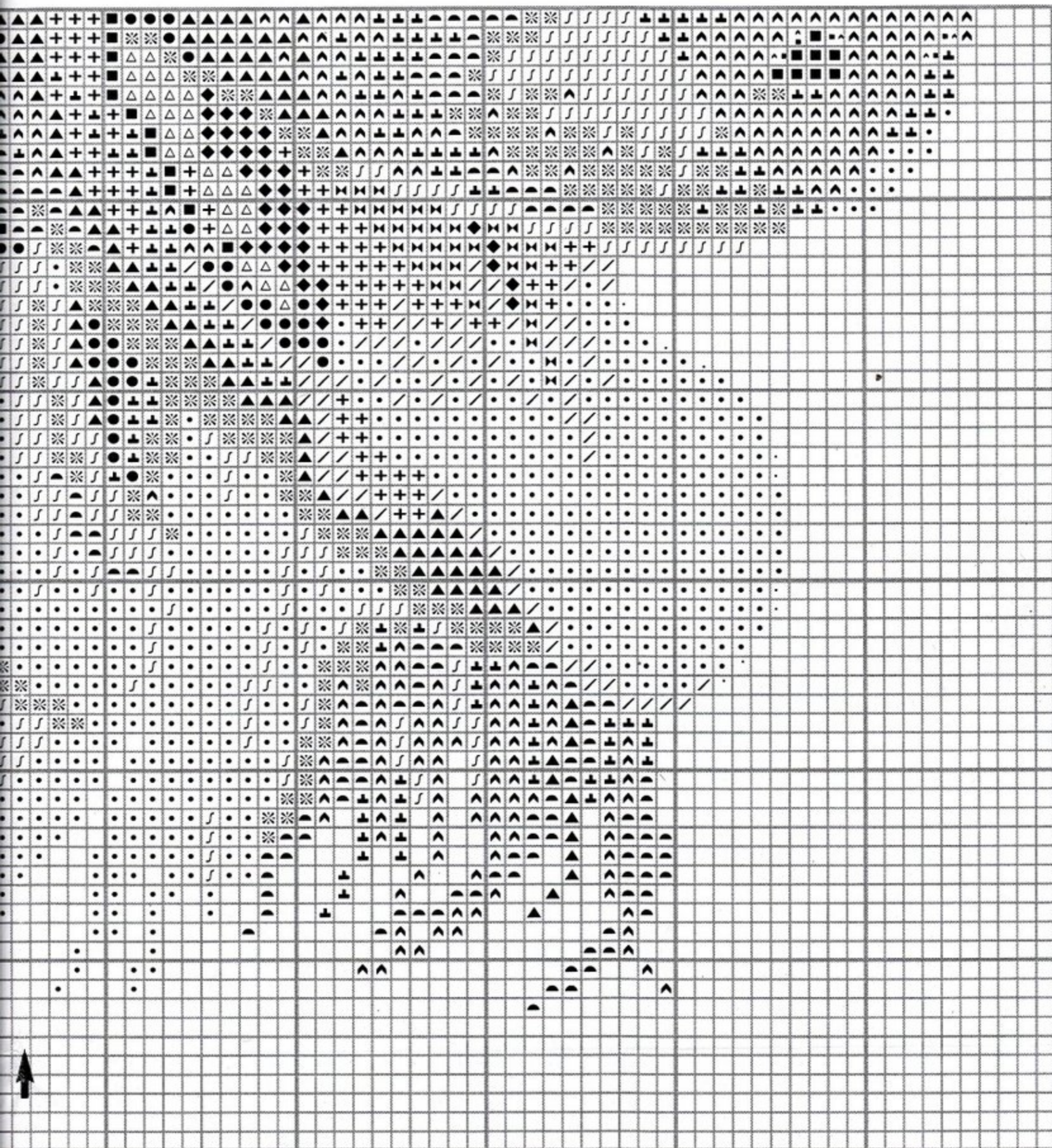
Thread quantities listed below are for six stranded, 61cm (2ft) lengths of DMC stranded cottons.

DMC	Qty	DMC	Qty	DMC	Qty
223	1	413	6	762	7
224	2	414	7	898	1
225	1	415	7	3721	1
310	7	434	1	3799	6
317	6	436	1	3865	8
318	6	739	1		

Numbers refer to DMC colours.

Cross stitch using two strands of one of

- ⊞ 223 (dusty pink)
- + 224 (light dusty pink)
- / 225 (shell pink)
- 310 (black)
- ▲ 317 (steel grey)
- ◆ 318 (granite)
- ▲ 413 (iron grey)
- ▲ 414 (lead)
- ※ 415 (chrome)
- ⊙ 434 (cigar)
- 436 (light cream)
- △ 739 (cream)
- ∩ 762 (pearl grey)
- ♥ 898 (teak)
- ◆ 3721 (earth)
- 3799 (anthracite)
- 3865 (white)



f one colour.
 (cigar)
 (light cigar)
 (cream)
 (pearl grey)
 (teak)
 (earth pink)
 (anthracite)
 (white)

Helpline

If you have any problems or require assistance in working this design, please contact:

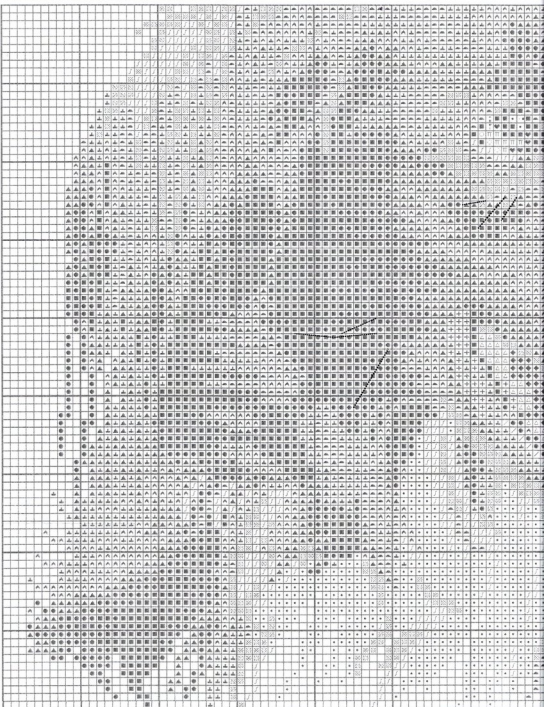
Heritage Stitchcraft, Redbrook Lane,
 Brereton, Rugeley, Staffs. WS15 1QU.
 Phone 01889 575256

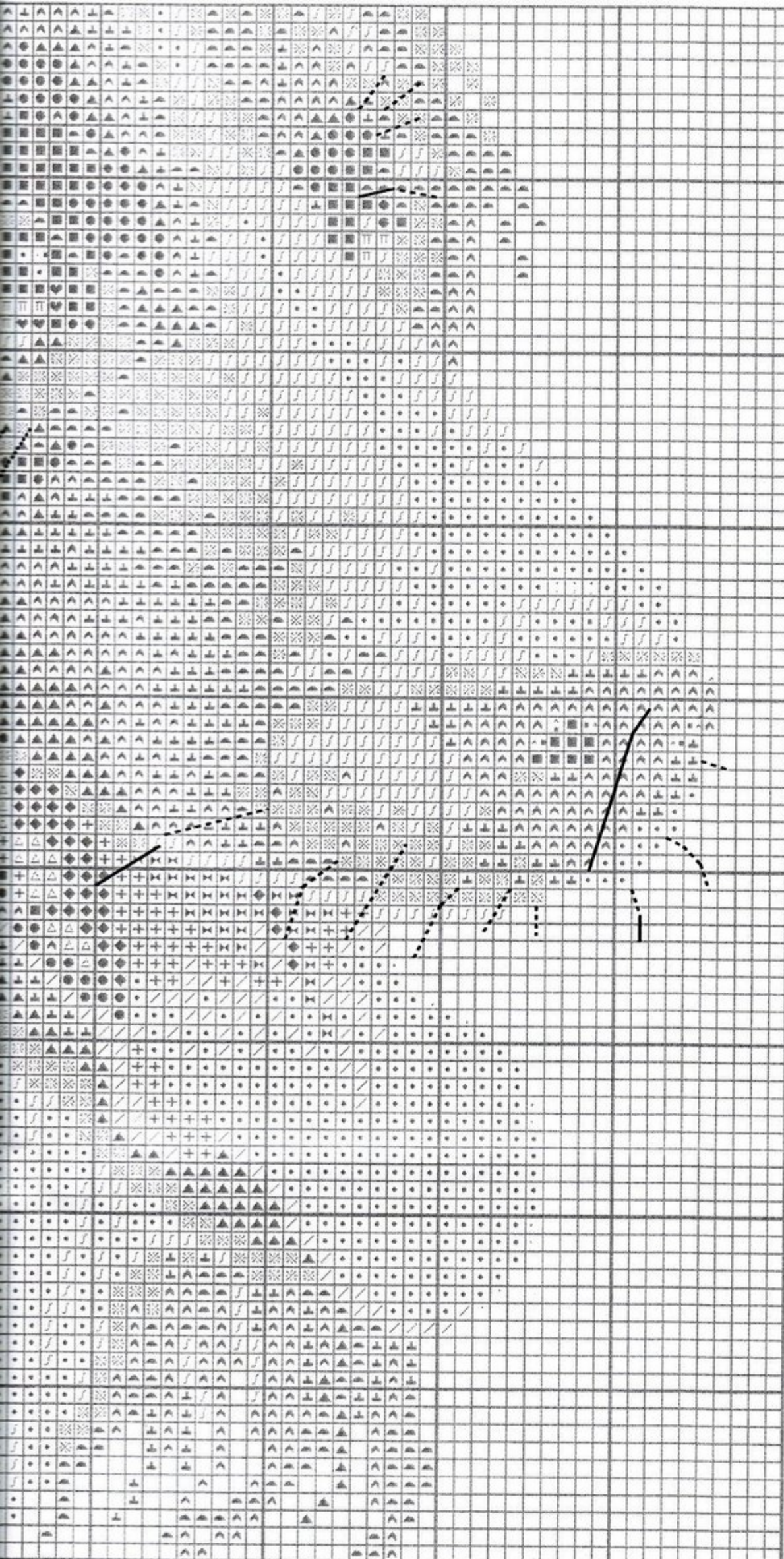
HERITAGE STITCHCRAFT

© Copyright 2007



TODD OUTLINING SHEET 1





Outlining working in back stitch and long stitches, using one strand.

——— 318 (granite)

..... 3799 (anthracite)

----- 3865 (white)

Helpline

If you have any problems or require assistance in working this design, please contact:

Heritage Stitchcraft, Redbrook Lane,
Brereton, Rugeley, Staffs. WS15 1QU
Phone 01889 575256

HERITAGE STITCHCRAFT

© Copyright 2007 - www.silvergallery.ru