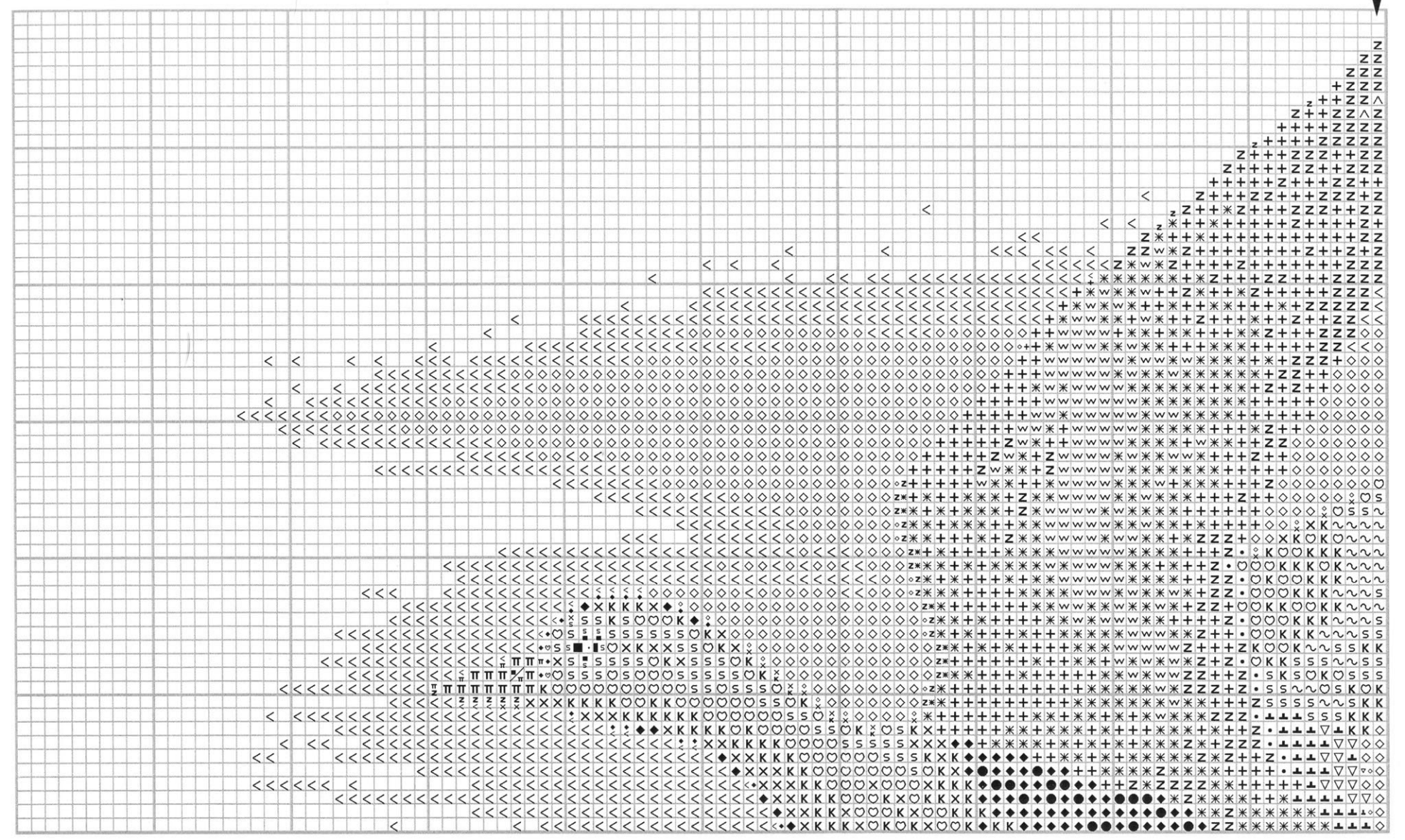
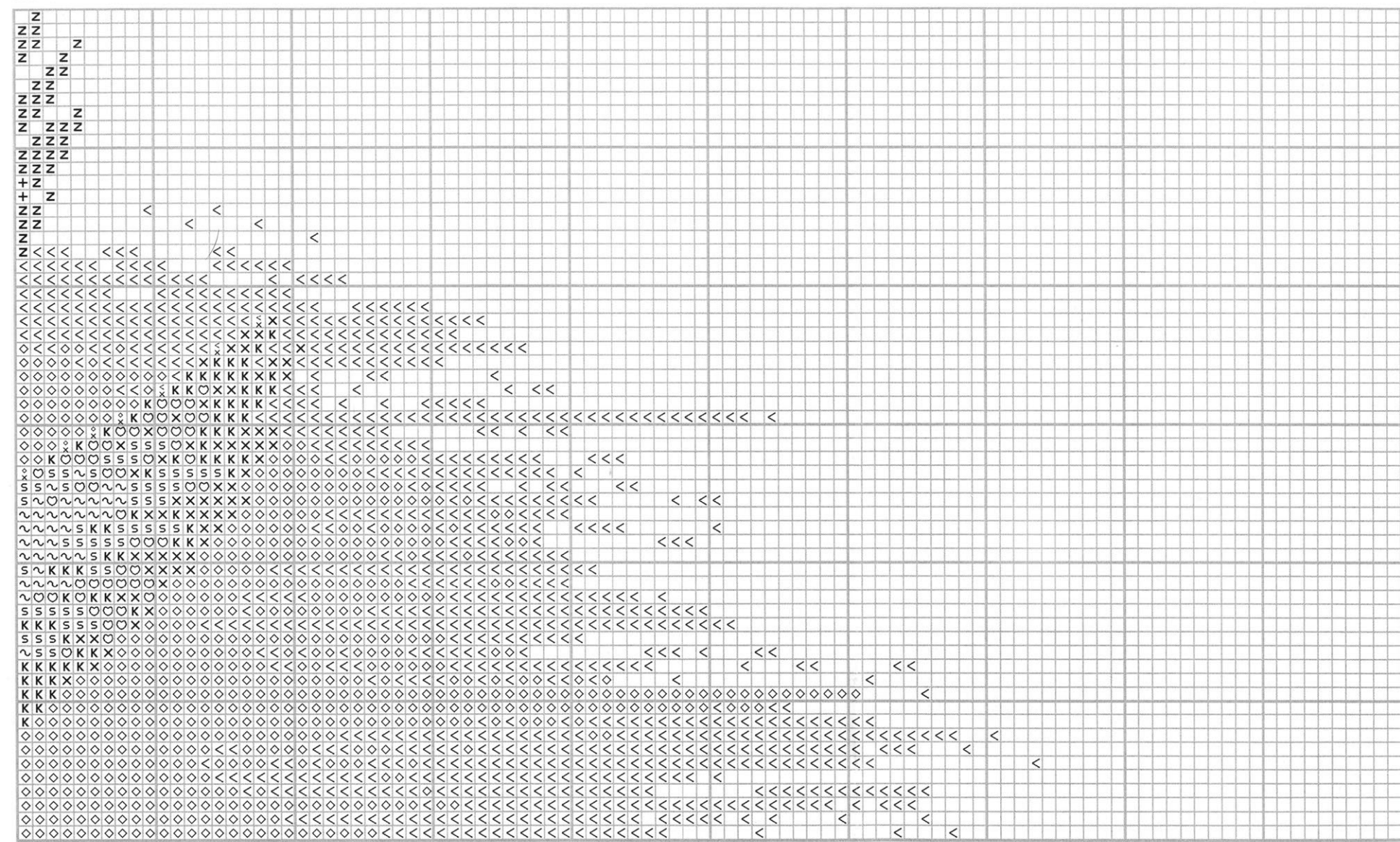


MALLARD DUCKS IN FLIGHT CROSS STITCH SHEET 1



MALLARD DUCKS IN FLIGHT CROSS STITCH SHEET 2



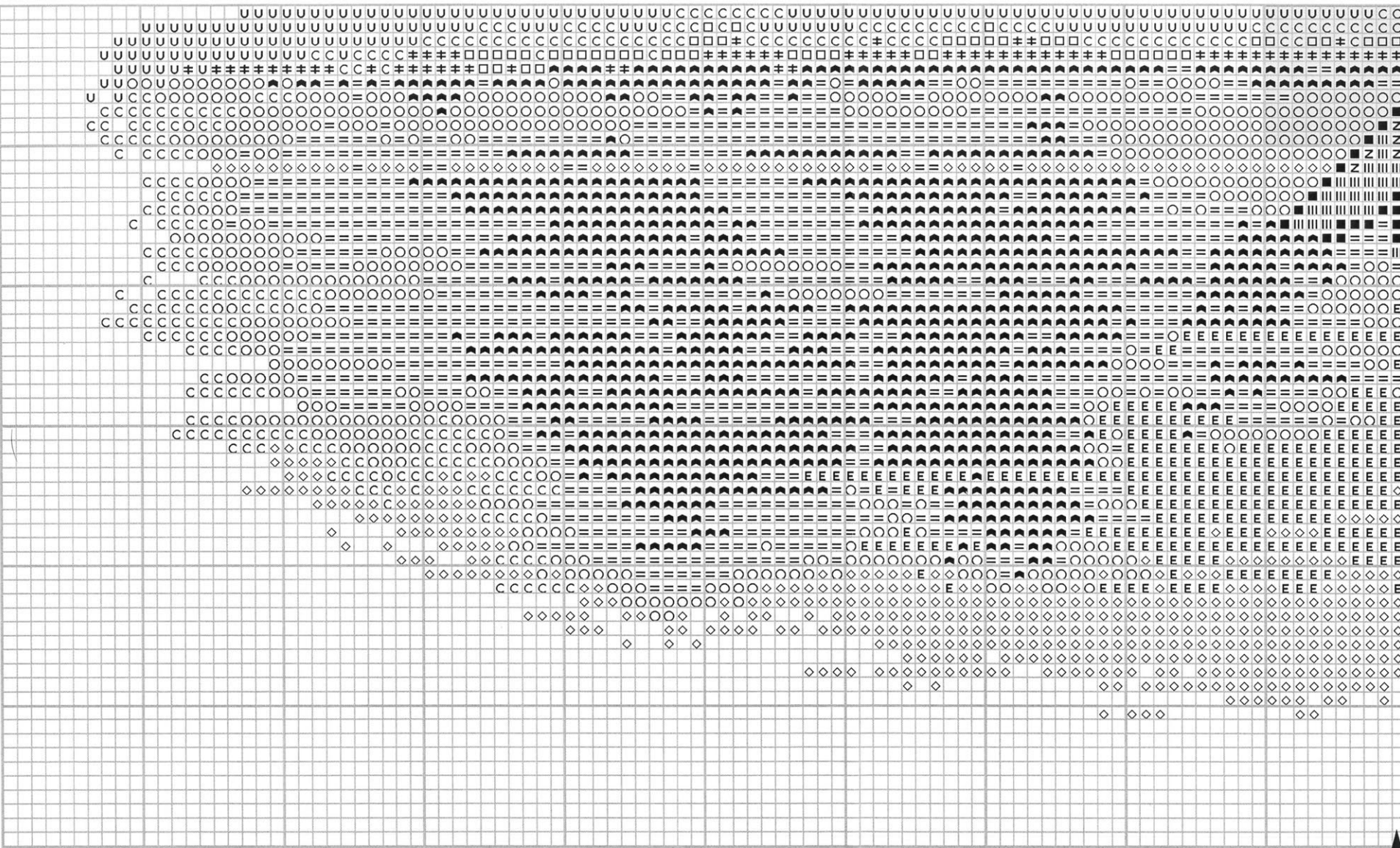
MALLARD DUCKS IN FLIGHT CROSS STITCH SHEET 3



MALLARD DUCKS IN FLIGHT CROSS STITCH SHEET 4



MALLARD DUCKS IN FLIGHT CROSS STITCH SHEET 5



MALLARD DUCKS IN FLIGHT CROSS STITCH SHEET 6



To protect these charts tape along the folds using transparent tape.

Numbers refer to DMC colours.

Cross stitch using two strands of one colour.

▽ 340 (blue violet)	♡ 738 (light tan)	○ 3013 (light khaki)
E 341 (light blue violet)	π 743 (yellow)	≡ 3740 (dark violet)
Z 451 (dark grey)	● 898 (burnt coffee)	⬆ 3746 (deep violet)
* 452 (grey)	\ 913 (light green)	◇ 3747 (pale violet)
w 453 (pale grey)	▣ 970 (bright orange)	■ 3799 (deep grey)
H 500 (deep green)	▲ 3011 (dark khaki)	× 3828 (hazelnut)
∅ 700 (bright green)	= 3012 (khaki)	• white
~ 712 (cream)		

Cross stitch using one strand of each of two colours.

+ 451 and 452	K 738 and 3828
Λ 453 and white	◆ 869 and 3828
S 712 and 738	< 3747 and white

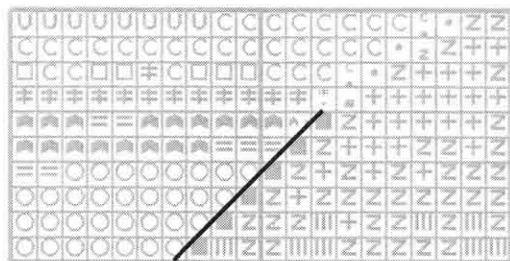
Cross stitch using one strand of one colour.

≠ 3011 (dark khaki)	C 3013 (light khaki)
□ 3012 (khaki)	u 3046 (light mustard)

Thread quantities listed below are for six stranded, 61cm (2ft) lengths of DMC stranded cottons.

DMC	Quantity	DMC	Quantity	DMC	Quantity	DMC	Quantity
340	1	700	1	913	1	3740	6
341	7	712	3	970	2	3746	1
451	14	738	6	3011	13	3747	38
452	9	743	2	3012	13	3799	5
453	3	869	2	3013	12	3828	5
500	2	898	3	3046	5	white	17

Fine diagonal lines on this chart indicate diagonal half stitches.



Outlining using one strand of white, working in back stitch.

The shaded areas on sheet 5 and sheet 6 indicates position of this outlining.

sheet 1	sheet 2
sheet 3	sheet 4
sheet 5	sheet 6

Position sheets in this order