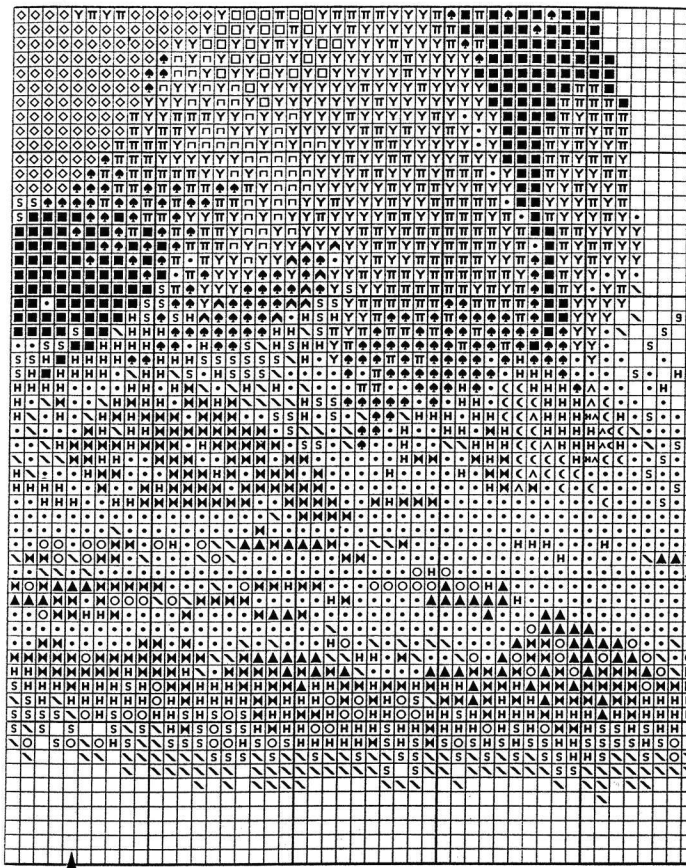


EAGLE IN FLIGHT SHEET 1F



To protect these charts tape along the folds using transparent tape.

Numbers refer to DMC colours.

Cross stitch using two strands of one colour.

- | | | |
|------------------------|--------------------|--------------------------|
| ■ 310 (black) | ○ 503 (blue green) | ◆ 838 (dk. beige brown) |
| ⬢ 341 (blue violet) | ◊ 726 (yellow) | ◻ 842 (lt. beige brown) |
| ◆ 433 (brown) | ∩ 739 (v. lt. tan) | + 3743 (blue violet) |
| □ 435 (lt. brown) | △ 742 (tangerine) | s 3747 (lt. blue violet) |
| * 437 (lt. tan) | ⌘ 793 (blue) | • B5200 (ice white) |
| ▲ 501 (dk. blue green) | | |

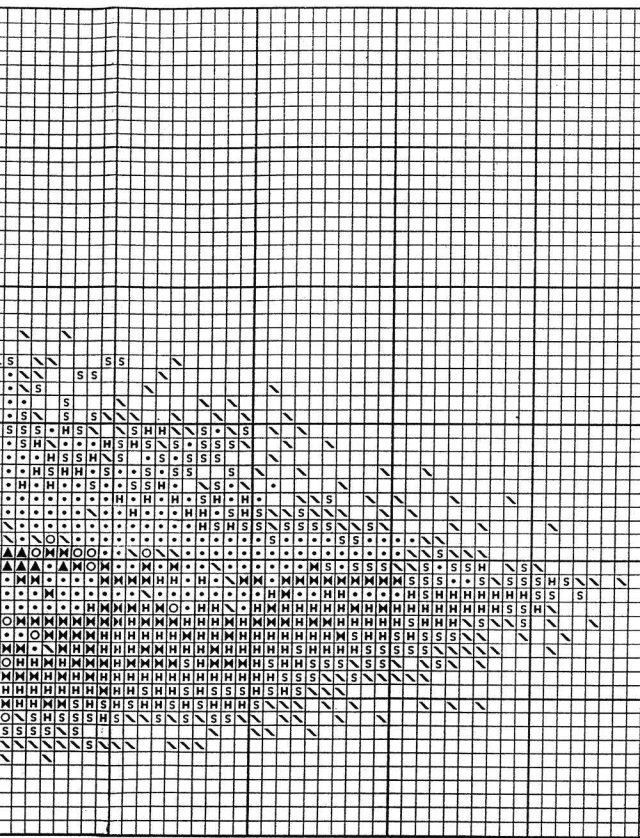
Cross stitch using one strand of each of two colours.

- | | | |
|----------------|----------------|----------------|
| ▲ 413 and 3740 | Y 435 and 3042 | π 840 and 3740 |
| z 414 and 3042 | | |

Cross stitch using
~ 739 (v. lt. tan)

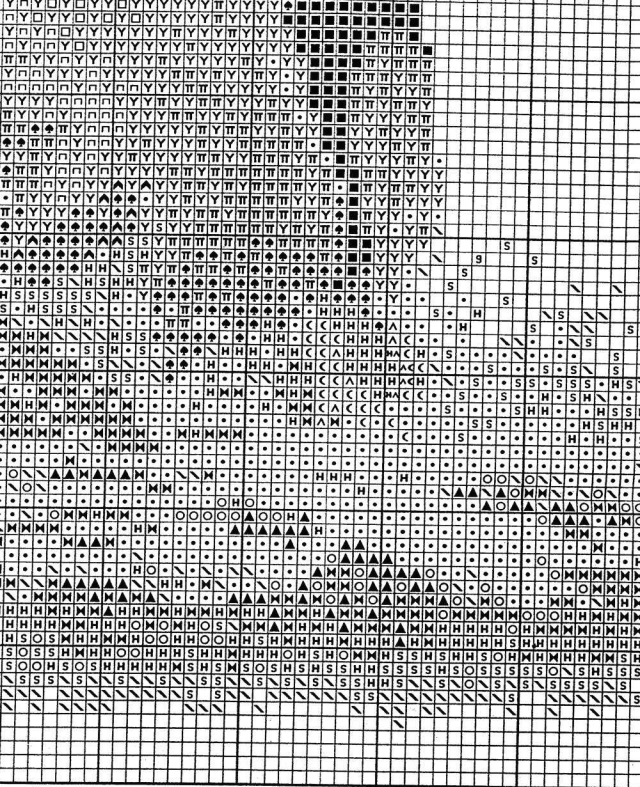
HERITAGE

© Copyright 2000



and of one colour.
2 (lt. beige brown) \ 3747 (lt. blue violet)





along the folds using transparent tape.

ers.

nds of one colour.

- (blue green) ◆ 838 (dk. beige brown)
- (yellow) □ 842 (lt. beige brown)
- (v. lt. tan) + 3743 (blue violet)
- (tangerine) s 3747 (lt. blue violet)
- (blue) • B5200 (ice white)

d of each of two colours.

and 3042 π 840 and 3740

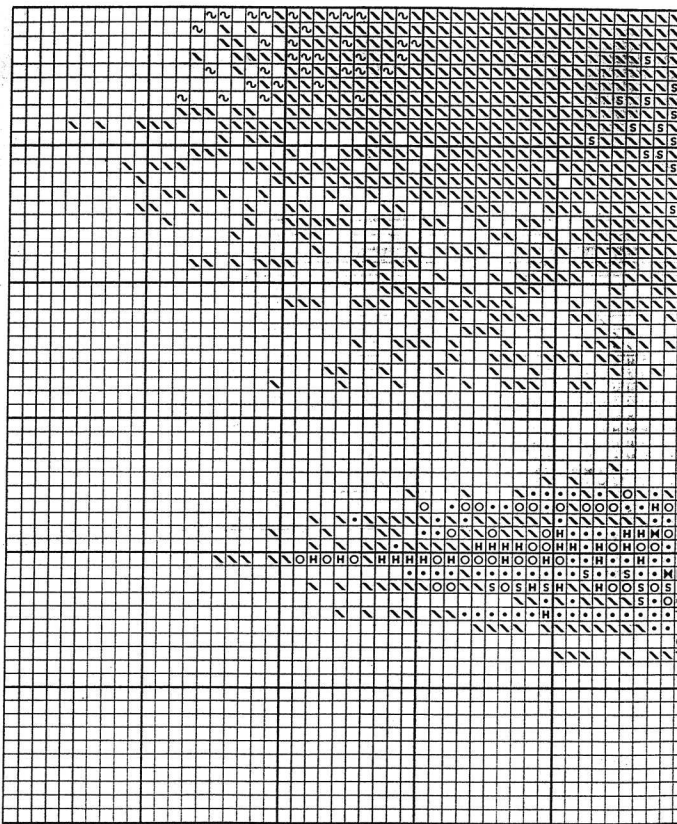
Cross stitch using one strand of one col
 ~ 739 (v. lt. tan) ◇ 842 (lt. beige bro

HERITAGE STITCHCRAFT

© Copyright 2000



EAGLE IN FLIGHT SHEET 1E



To protect these charts tape along the folds using transparent tape.

Numbers refer to DMC colours.

Cross stitch using two strands of one colour.

- | | | |
|------------------------|--------------------|--------------------------|
| ■ 310 (black) | ○ 503 (blue green) | ◆ 838 (dk. beige brown) |
| ■ 341 (blue violet) | ◁ 726 (yellow) | ◻ 842 (lt. beige brown) |
| ◆ 433 (brown) | ◊ 739 (v. lt. tan) | ⊕ 3743 (blue violet) |
| ◻ 435 (lt. brown) | △ 742 (tangerine) | ⊞ 3747 (lt. blue violet) |
| * 437 (lt. tan) | ✦ 793 (blue) | • B5200 (ice white) |
| ▲ 501 (dk. blue green) | | |

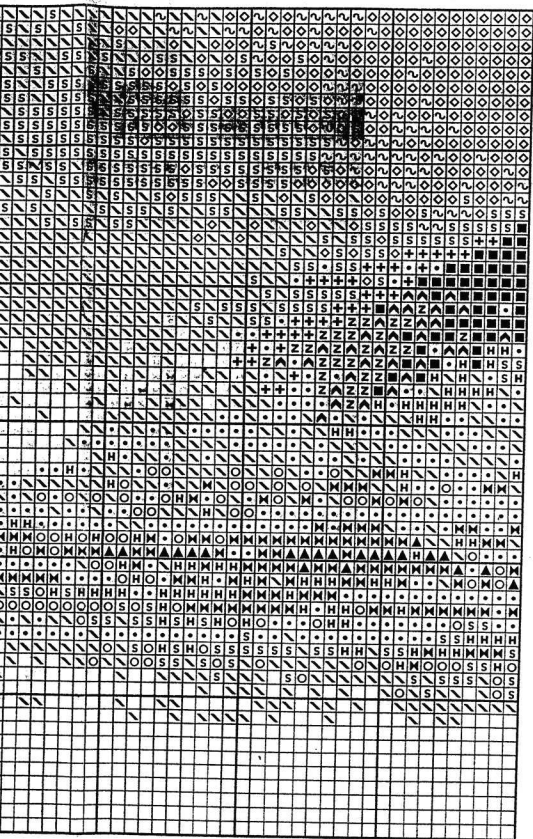
Cross stitch using one strand of each of two colours.

- | | | |
|----------------|----------------|----------------|
| ▲ 413 and 3740 | Y 435 and 3042 | ▯ 840 and 3740 |
| z 414 and 3042 | | |

Cross stitch using one strand of each of two colours.
~ 739 (v. lt. tan)

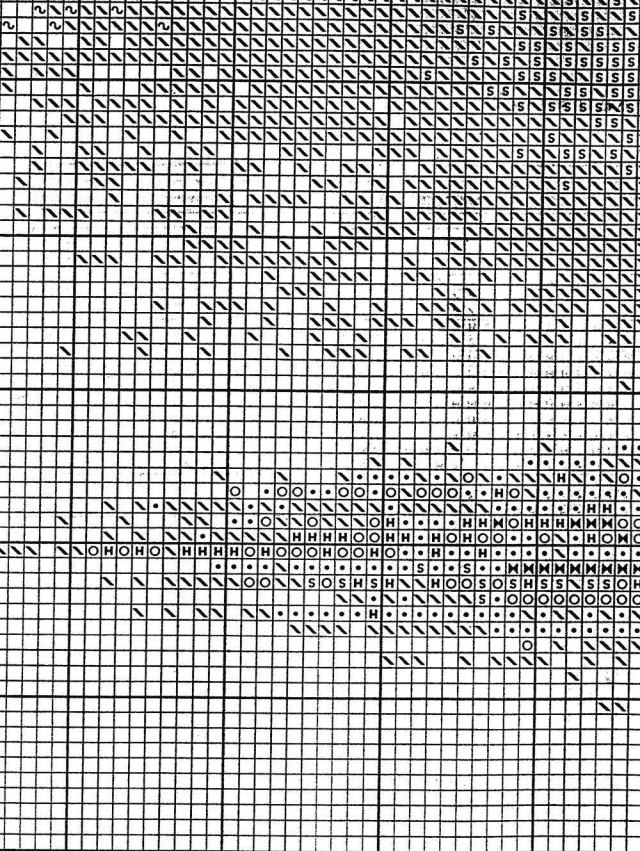
HERITAGE STITCHES

© Copyright 2000



d of one colour.
(lt. beige brown) \ 3747 (lt. blue violet)





the folds using transparent tape.

Cross stitch using one strand of one
 ~ 739 (v. lt. tan) ◇ 842 (lt. beige)

one colour.

- ◆ 838 (dk. beige brown)
- 842 (lt. beige brown)
- + 3743 (blue violet)
- s 3747 (lt. blue violet)
- B5200 (ice white)

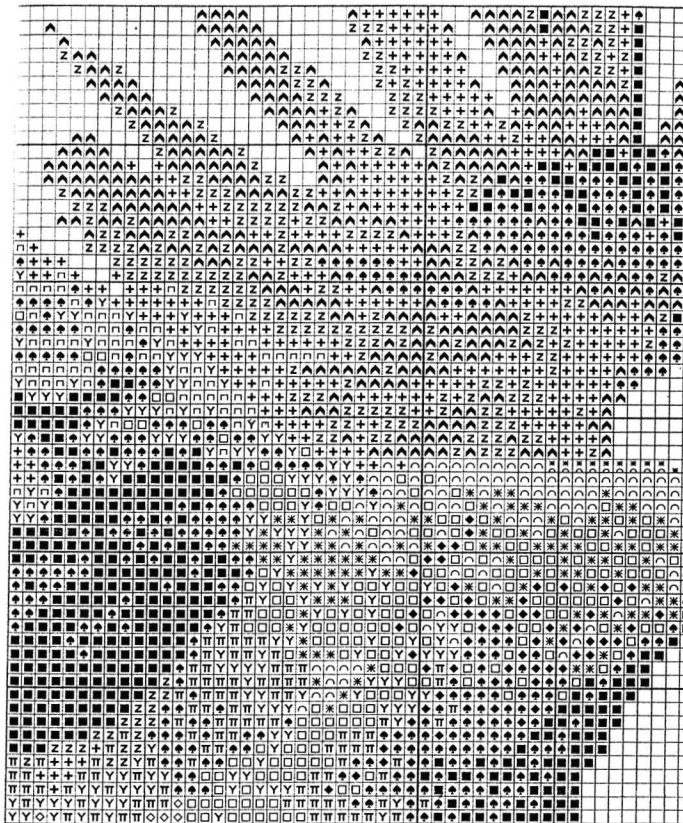
each of two colours.
 042 π 840 and 3740

HERITAGE STITCHCRAFT

© Copyright 2000



EAGLE IN FLIGHT SHEET 1D



To protect these charts tape along the folds using transparent tape.

Numbers refer to DMC colours.

Cross stitch using two strands of one colour.

- | | | |
|------------------------|--------------------|--------------------------|
| ■ 310 (black) | ○ 503 (blue green) | ◆ 838 (dk. beige brown) |
| H 341 (blue violet) | ◁ 726 (yellow) | ◊ 842 (lt. beige brown) |
| ◆ 433 (brown) | ◊ 739 (v. lt. tan) | + 3743 (blue violet) |
| ◇ 435 (lt. brown) | △ 742 (tangerine) | s 3747 (lt. blue violet) |
| * 437 (lt. tan) | ▲ 793 (blue) | • B5200 (ice white) |
| Δ 501 (dk. blue green) | | |

Cross stitch using one strand of each of two colours.

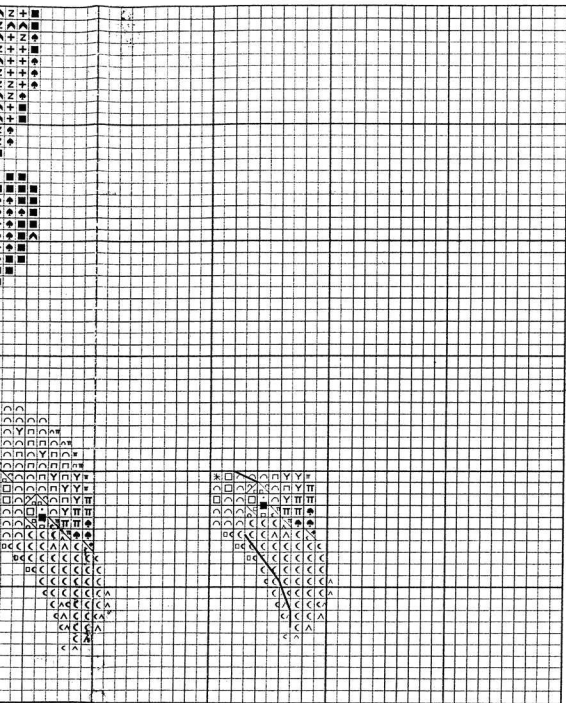
- | | | |
|----------------|----------------|-----------------|
| ▲ 413 and 3740 | Y 435 and 3042 | TT 840 and 3740 |
| Z 414 and 3042 | | |

Cross stitch using one strand of each of two colours.

Outlining using long One strand of each of two colours.

HERITAGE ST

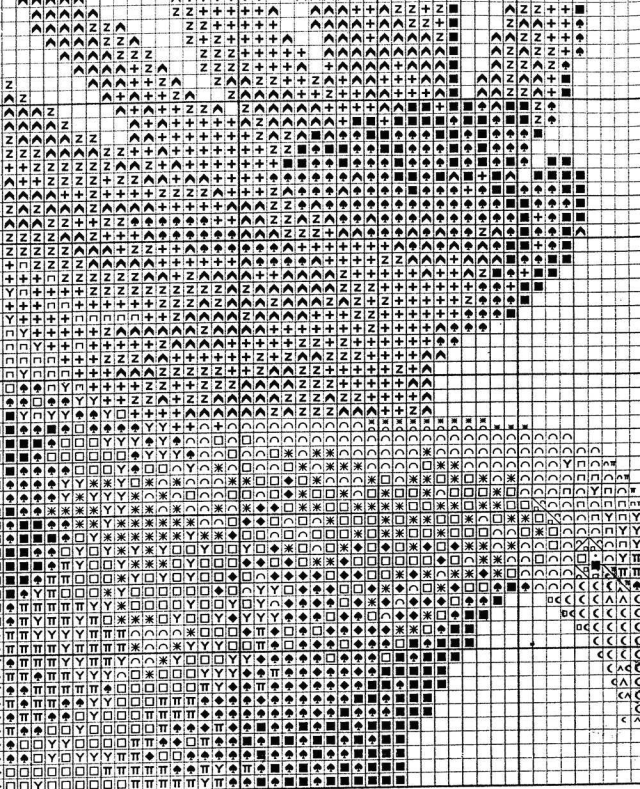
© Copyright 2000



and of one colour.
2 (lt. beige brown) \ 3747 (lt. blue violet)

es.
(brown)





along the folds using transparent tape.

urs.

nds of one colour.

- (blue green) ◆ 838 (dk. beige brown)
- (yellow) □ 842 (lt. beige brown)
- (v. lt. tan) + 3743 (blue violet)
- (tangerine) s 3747 (lt. blue violet)
- (blue) • B5200 (ice white)

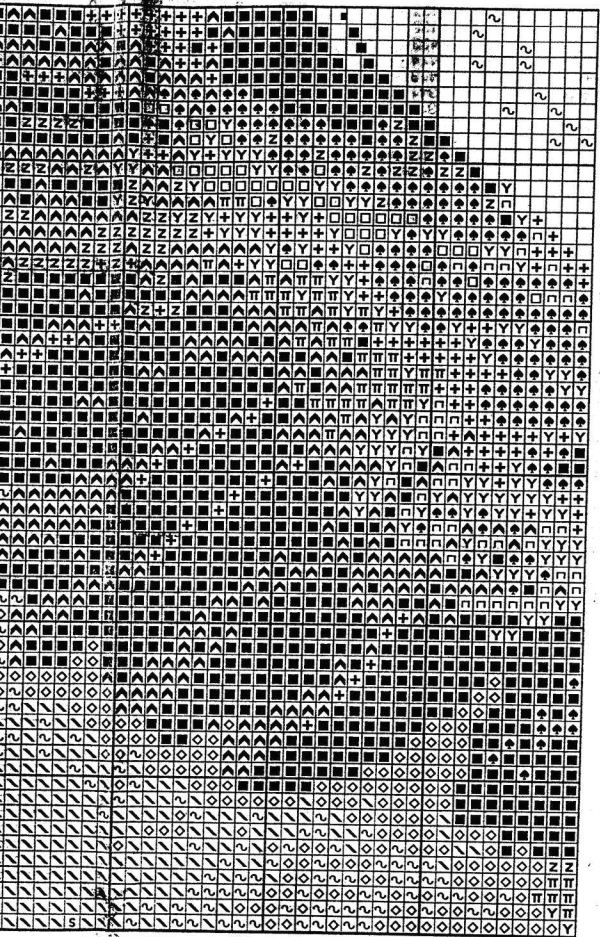
nd of each of two colours.
and 3042 ▨ 840 and 3740

Cross stitch using one strand of one col
~ 739 (v. lt. tan) ◇ 842 (lt. beige bro

Outlining using long stitches.
— One strand of 435 (lt. brown)



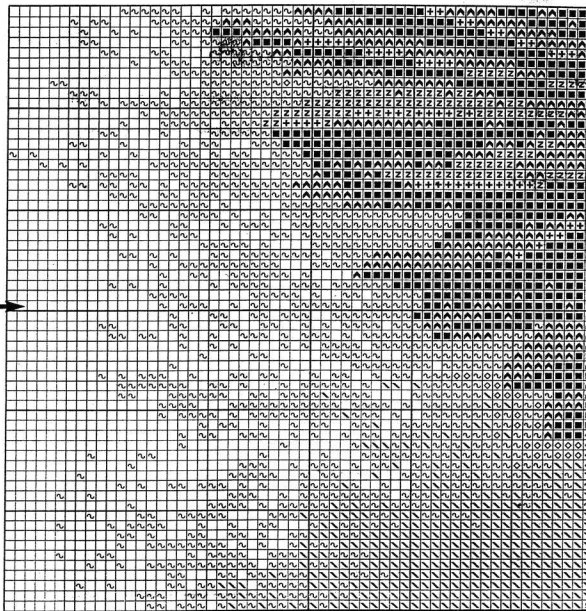
© Copyright 2000



of one colour.
 (lt. beige brown) \ 3747 (lt. blue violet)



EAGLE IN FLIGHT SHEET 1C



To protect these charts tape along the folds using transparent tape.

Numbers refer to DMC colours.

Cross stitch using two strands of one colour.

- | | | |
|------------------------|--------------------|--------------------------|
| ■ 310 (black) | ○ 503 (blue green) | ◆ 838 (dk. beige brown) |
| ■ 341 (blue violet) | ◁ 726 (yellow) | ◻ 842 (lt. beige brown) |
| ◆ 433 (brown) | ∧ 739 (v. lt. tan) | ⊕ 3743 (blue violet) |
| □ 435 (lt. brown) | ∧ 742 (tangerine) | ⊖ 3747 (lt. blue violet) |
| ✱ 437 (lt. tan) | ■ 793 (blue) | • B5200 (ice white) |
| ▲ 501 (dk. blue green) | | |

Cross stitch using one strand of each of two colours.

- | | | |
|----------------|----------------|----------------|
| ▲ 413 and 3740 | Y 435 and 3042 | ⊞ 840 and 3740 |
| Z 414 and 3042 | | |

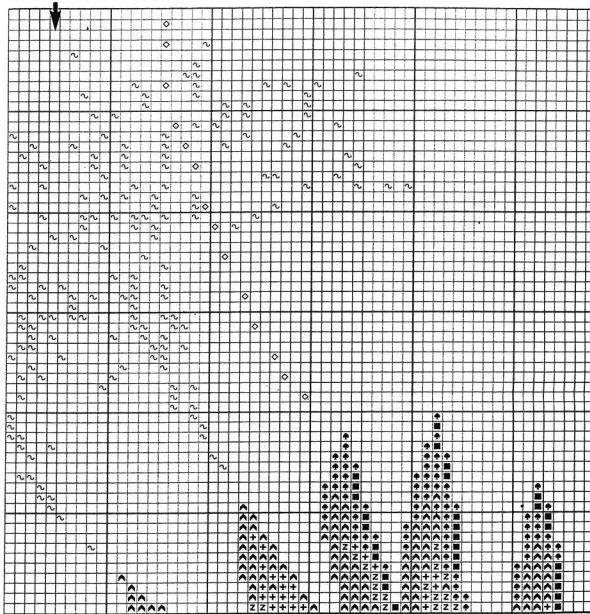
Cross stitch using one strand of one
 ~ 739 (v. lt. tan) ◊ 842 (lt. beige brown)

HERITAGE STITCHCRAFT

© Copyright 2000



EAGLE IN FLIGHT SHEET 1B



To protect these charts tape along the folds using transparent tape.

Numbers refer to DMC colours.

Cross stitch using two strands of one colour.

- | | | |
|------------------------|--------------------|--------------------------|
| ■ 310 (black) | ○ 503 (blue green) | ◆ 838 (dk. beige brown) |
| ■ 341 (blue violet) | ◁ 726 (yellow) | n 842 (lt. beige brown) |
| ◆ 433 (brown) | ∩ 739 (v. lt. tan) | + 3743 (blue violet) |
| □ 435 (lt. brown) | ▲ 742 (tangerine) | s 3747 (lt. blue violet) |
| ✱ 437 (lt. tan) | ■ 793 (blue) | • B5200 (ice white) |
| ▲ 501 (dk. blue green) | | |

Cross stitch using one strand of each of two colours.

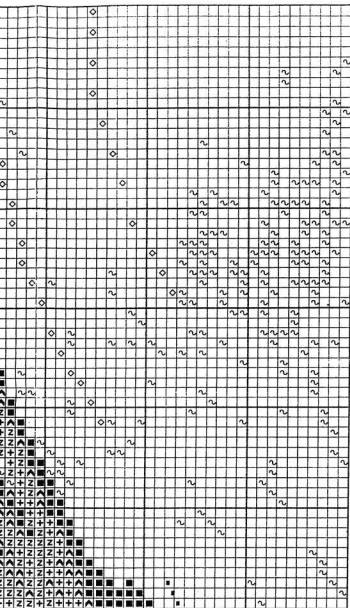
- | | | |
|----------------|----------------|----------------|
| ▲ 413 and 3740 | Y 435 and 3042 | ▯ 840 and 3740 |
| Z 414 and 3042 | | |

Cross stitch using one strand of one colour
 ~ 739 (v. lt. tan) ◊ 842 (lt. beige brown)

HERITAGE STITCHCRAFT

© Copyright 2000





sheet 1A	sheet 1B
sheet 1C	sheet 1D
sheet 1E	sheet 1F

Position sheets in this order

one colour.
 (light brown) \ 3747 (lt. blue violet)
 for six stranded, 61cm (2ft) lengths of DMC

DMC	Quantity
840	2
842	5
3042	6
3740	8
3743	7
3747	14
B5200	10

Helpline

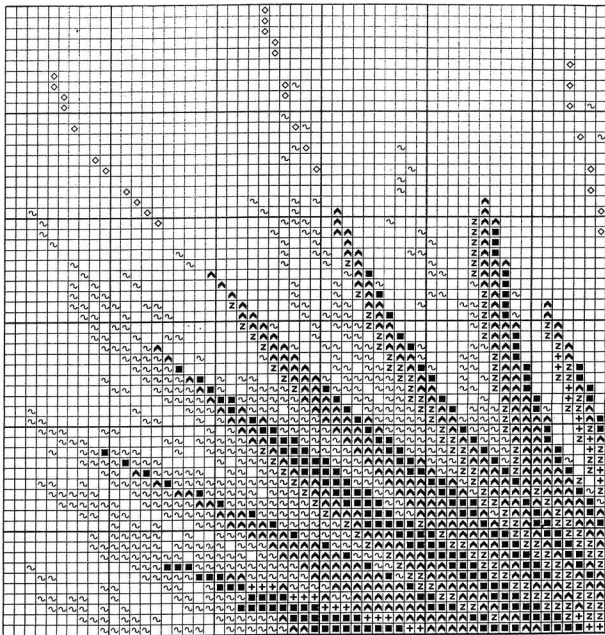
If you have any problems or require assistance in working this design, please contact:

Heritage Stitchcraft, Redbrook Lane, Brereton, Rugeley, Staffs. WS15 1QU.
 Phone 01889 575256



© Copyright 2000

EAGLE IN FLIGHT SHEET 1A



To protect these charts tape along the folds using transparent tape.

Numbers refer to DMC colours.

Cross stitch using two strands of one colour.

- | | | |
|------------------------|--------------------|--------------------------|
| ■ 310 (black) | ○ 503 (blue green) | ◆ 838 (dk. beige brown) |
| ■ 341 (blue violet) | ◁ 726 (yellow) | ◻ 842 (lt. beige brown) |
| ◆ 433 (brown) | ∧ 739 (v. lt. tan) | + 3743 (blue violet) |
| □ 435 (lt. brown) | ∧ 742 (tangerine) | § 3747 (lt. blue violet) |
| ✱ 437 (lt. tan) | ■ 793 (blue) | • B5200 (ice white) |
| △ 501 (dk. blue green) | | |

Cross stitch using one strand of each of two colours.

- | | | |
|----------------|----------------|----------------|
| ▲ 413 and 3740 | Y 435 and 3042 | ▯ 840 and 3740 |
| Z 414 and 3042 | | |

Cross stitch using one strand of one
 ~ 739 (v. lt. tan) ◇ 842 (lt. beige

Thread quantities listed below are for
 stranded cottons.

DMC	Quantity	DMC	Quantity
310	17	501	2
341	5	503	3
413	7	726	1
414	3	739	10
433	1	742	1
435	6	793	4
437	2	838	8



To protect these charts tape along the folds using transparent tape.

Numbers refer to DMC colours.

Cross stitch using two strands of one colour.

- | | | |
|------------------------|--------------------|--------------------------|
| ■ 310 (black) | ○ 503 (blue green) | ◆ 838 (dk. beige brown) |
| ⊞ 341 (blue violet) | ◁ 726 (yellow) | ⊞ 842 (lt. beige brown) |
| ◆ 433 (brown) | ∩ 739 (v. lt. tan) | + 3743 (blue violet) |
| □ 435 (lt. brown) | ∧ 742 (tangerine) | s 3747 (lt. blue violet) |
| * 437 (lt. tan) | ⊞ 793 (blue) | • B5200 (ice white) |
| ▲ 501 (dk. blue green) | | |

Cross stitch using one strand of each of two colours.

- | | | |
|----------------|----------------|----------------|
| ▲ 413 and 3740 | Y 435 and 3042 | ⊞ 840 and 3740 |
| Z 414 and 3042 | | |