

RHAPSODY IN BLUE CROSS STITCH CHART SHEET 1

To protect these charts tape along the folds using transparent tape.

Fine diagonal lines on this chart indicate diagonal half stitches. See sheet 3 for outlining.

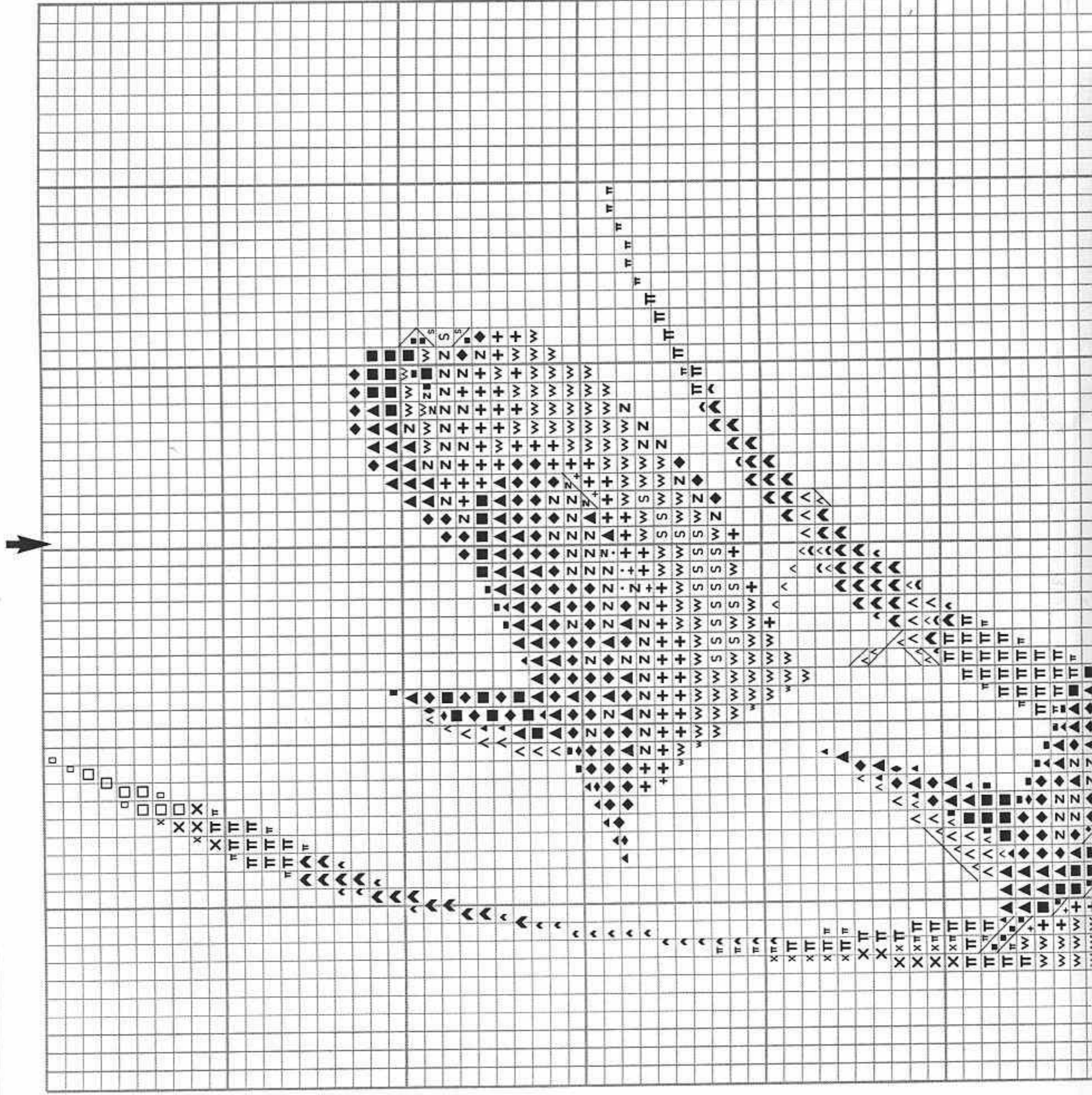
Numbers refer to DMC colours.

Thread quantities listed below are for six stranded, 61cm (2ft) lengths of DMC stranded cottons.

DMC	Quantity	DMC	Quantity
370	1	762	1
371	1	791	3
372	1	792	3
436	2	794	2
437	2	823	3
469	5	838	2
470	4	839	2
471	2	937	1
472	2	977	1
613	1	3011	1
647	1	3807	2
727	1	3862	2
738	1	3863	2
739	1	white	1

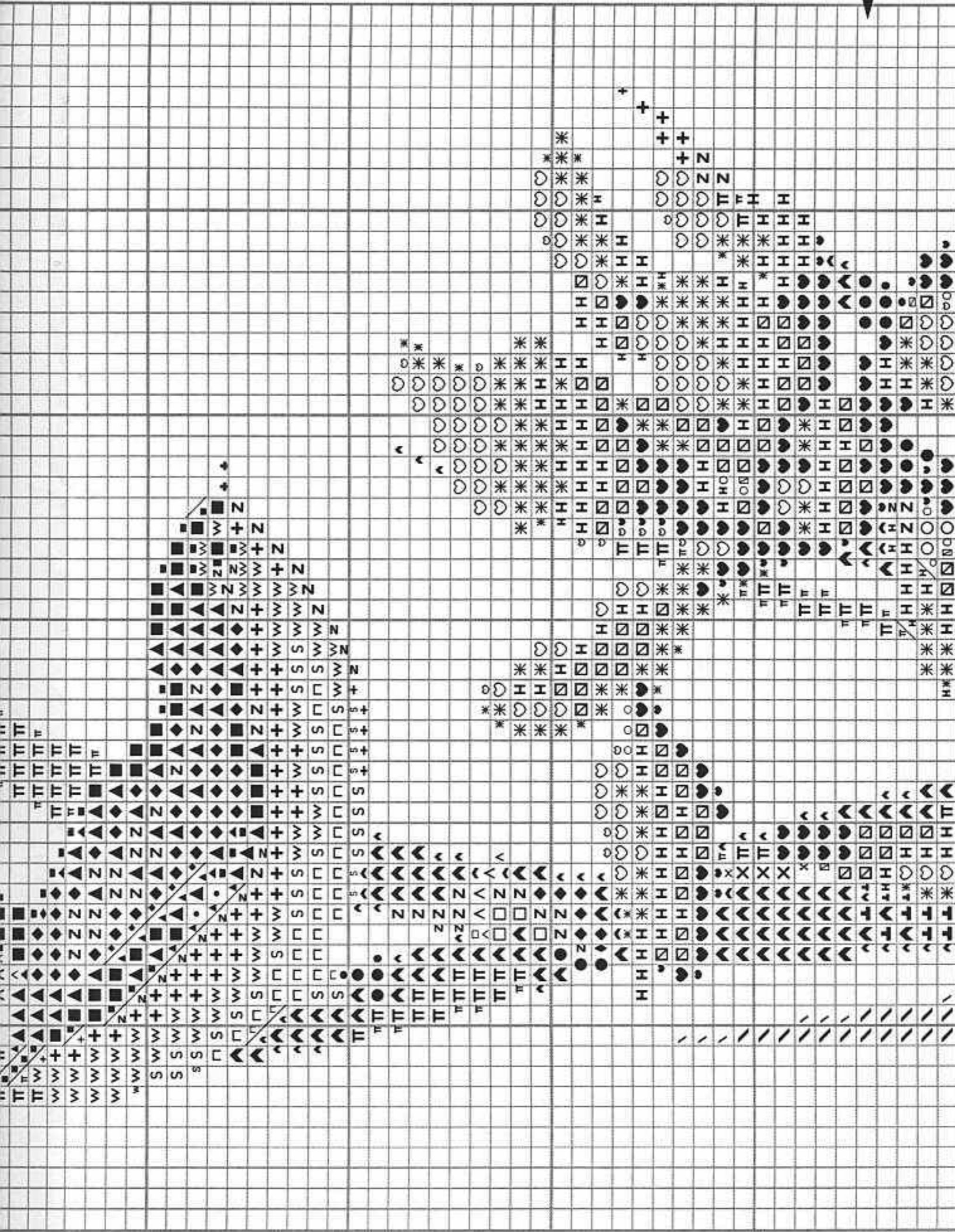
Cross stitch using two strands of one colour.

- ▢ = 370 (dk. olive)
- ▽ = 371 (olive)
- ∖ = 372 (lt. olive)
- + = 436 (lt. copper)
- w = 437 (pale copper)
- ▲ = 469 (dk. green)
- π = 470 (green)
- x = 471 (lt. green)
- ◇ = 472 (bright green)
- ~ = 613 (v. lt. brown)
- + = 647 (grey)
- o = 727 (yellow)
- s = 738 (tan)
- ∩ = 739 (lt. tan)
- ^ = 762 (silver)
- ◻ = 791 (dk. blue)
- H = 792 (blue)
- o = 794 (lt. blue)



- 739 (lt. tan)
- △ 762 (silver)
- ◻ 791 (dk. blue)
- ⊕ 792 (blue)
- 794 (lt. blue)
- 823 (v. dk. blue)
- 838 (dk. brown)
- ▲ 839 (brown)
- 937 (green)
- ◻ 977 (lt. copper)
- ▲ 3011 (green)
- 3807 (blue)
- ◆ 3862 (brown)
- z 3863 (lt. brown)
- white

Cross stitch using one strand of one colour.
 ∩ 472 (bright green)



Overlap with sheet 2

Helpline
 If you have any problems or require assistance in working this design, please contact:

Heritage Stitchcraft, Redbrook Lane,
 Brereton, Rugeley, Staffs. WS15 1QU.
 Phone 01889 575256

RHAPSODY IN BLUE CROSS STITCH CHART SHEET 2

To protect these charts tape along the folds using transparent tape.

Fine diagonal lines on this chart indicate diagonal half stitches. See sheet 3 outlining.

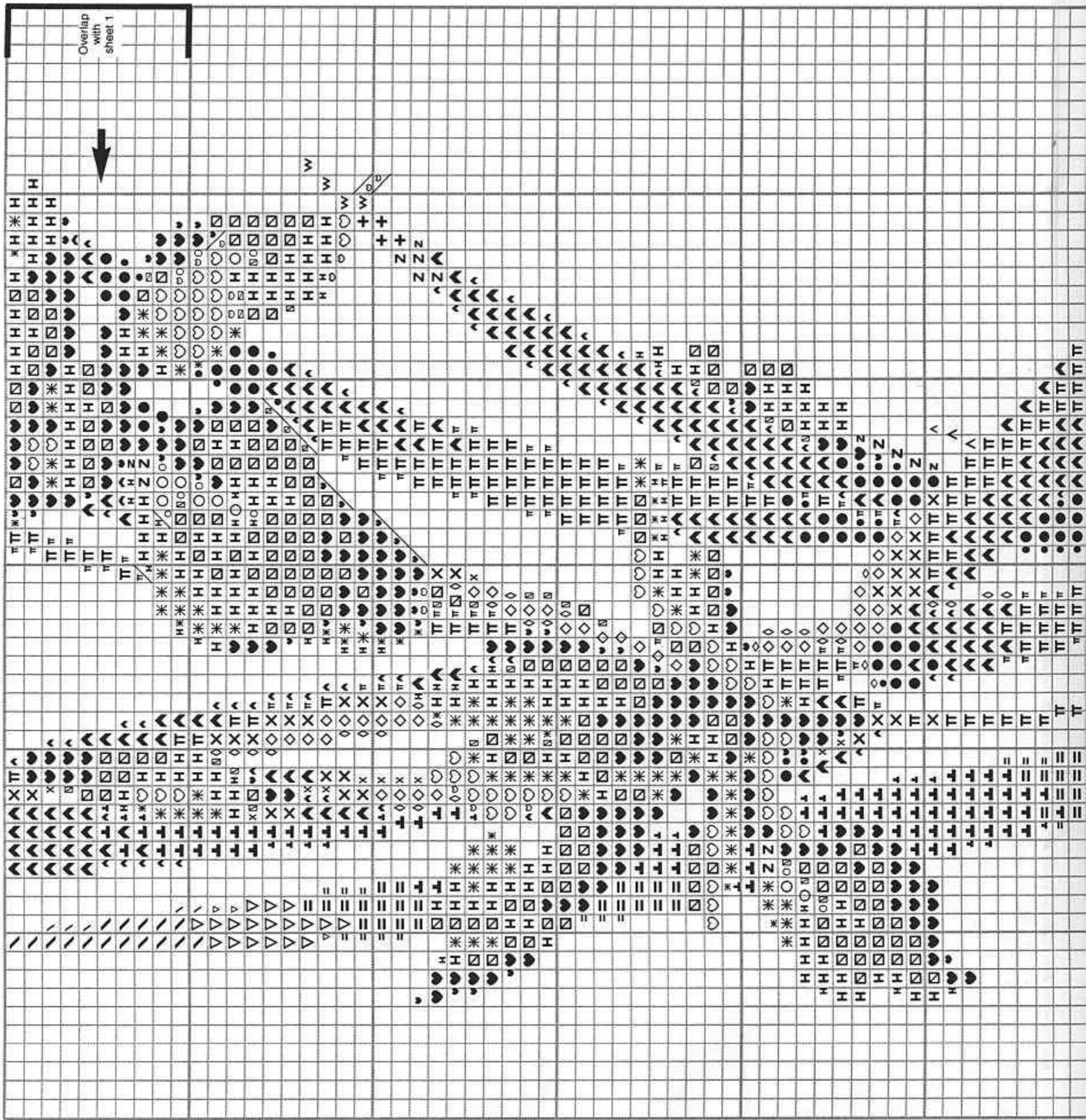
Numbers refer to DMC colours.

Thread quantities listed below are for six stranded, 61cm (2ft) lengths of DMC stranded cottons.

DMC	Quantity	DMC	Quantity
370	1	762	1
371	1	791	3
372	1	792	3
436	2	794	2
437	2	823	3
469	5	838	2
470	4	839	2
471	2	937	1
472	2	977	1
613	1	3011	1
647	1	3807	2
727	1	3862	2
738	1	3863	2
739	1	white	1

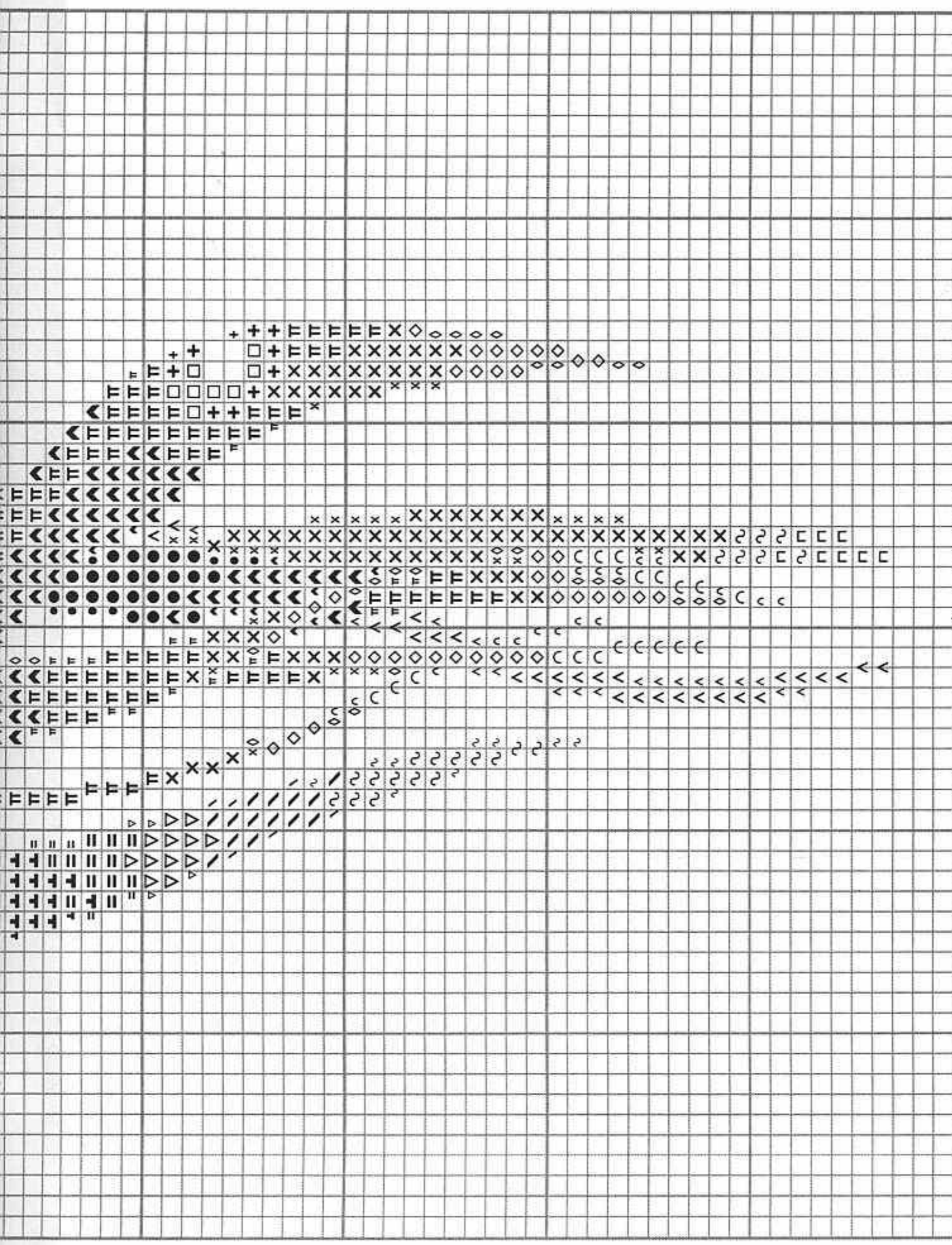
Cross stitch using two strands of one colour.

- = 370 (dk. olive)
- ∇ 371 (olive)
- ∧ 372 (lt. olive)
- + 436 (lt. copper)
- w 437 (pale copper)
- ▲ 469 (dk. green)
- π 470 (green)
- x 471 (lt. green)
- ◇ 472 (bright green)
- ~ 613 (v. lt. brown)
- ⊕ 647 (grey)
- 727 (yellow)
- s 738 (tan)
- 739 (lt. tan)
- ∧ 762 (silver)
- ◻ 791 (dk. blue)
- H 792 (blue)
- 794 (lt. blue)
- 823 (v. dk. blue)



- 739 (lt. tan)
- △ 762 (silver)
- ◻ 791 (dk. blue)
- ⊞ 792 (blue)
- 794 (lt. blue)
- ♥ 823 (v. dk. blue)
- 838 (dk. brown)
- ▲ 839 (brown)
- 937 (green)
- ◻ 977 (lt. copper)
- ⬇ 3011 (green)
- * 3807 (blue)
- ◆ 3862 (brown)
- z 3863 (lt. brown)
- white

Cross stitch using one strand of one colour.
 ∩ 472 (bright green)



RHAPSODY IN BLUE OUTLINING SHEET3

Outlining using one strand of thread.

-----437, use back stitch and long stitches.

———647, use long stitches.

———838, use back stitch and long stitches.

———3862, use back stitch and long stitches.

-----3863, use back stitch and long stitches.

———White, use back stitch and long stitches.

