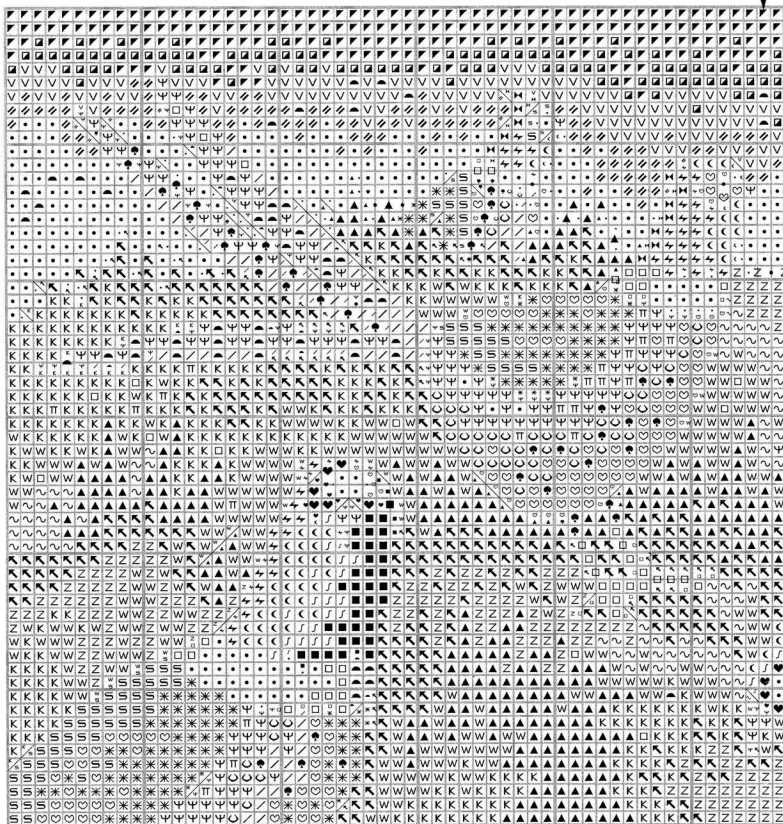


FAIR GAME



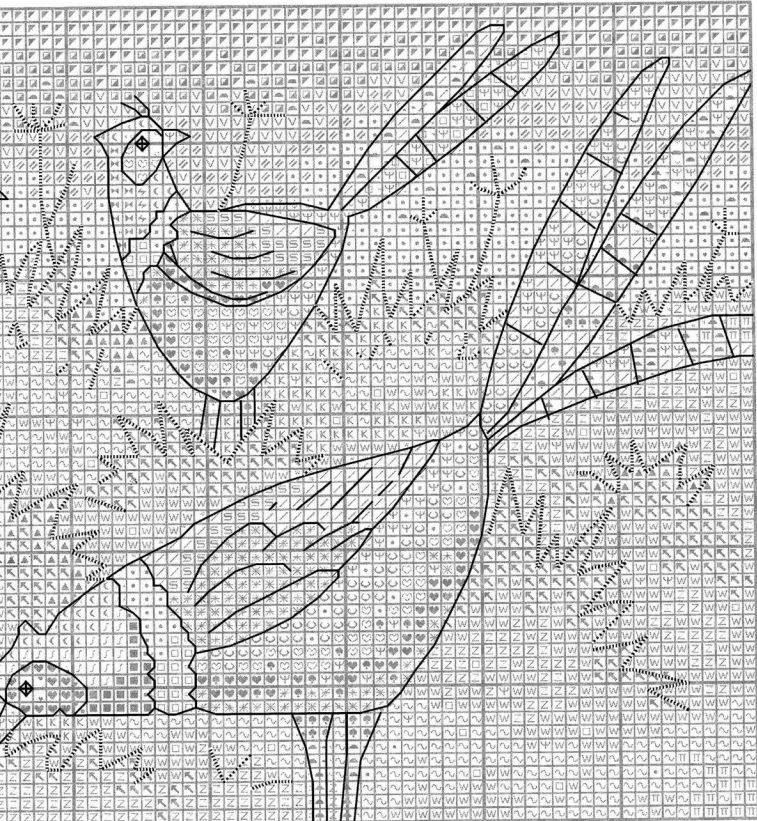
Fine diagonal lines on this chart indicate diagonal half stitches. See sheet 2 for outlining detail.

Thread quantities listed below are for six stranded, 61cm (2ft) lengths of DMC stranded cottons. Numbers refer to DMC colours.

DMC	Qty	DMC	Qty	DMC	Qty
310	4	704	10	3740	2
334	2	742	4	3743	3
350	4	743	5	3819	11
352	6	827	6	3841	6
517	2	946	4	3842	1
699	4	3042	3	white	8
702	8	3078	4		

Cross stitch using two strands of one colour.

- ◁ 334 (light blue)
- ♥ 350 (red)
- ◊ 352 (salmon)
- ↵ 517 (blue)
- ∫ 699 (very dark green)
- ▲ 702 (dark green)
- Z 704 (green)
- 742 (light orange)
- ψ 743 (yellow)
- ▮ 827 (medium blue)
- 3042 (lilac)
- ⊕ 3078 (pale yellow)
- ♣ 3740 (dark violet)
- 3743 (pale lilac)

**Helpline**

If you have any problems or require assistance in working this design, please contact:

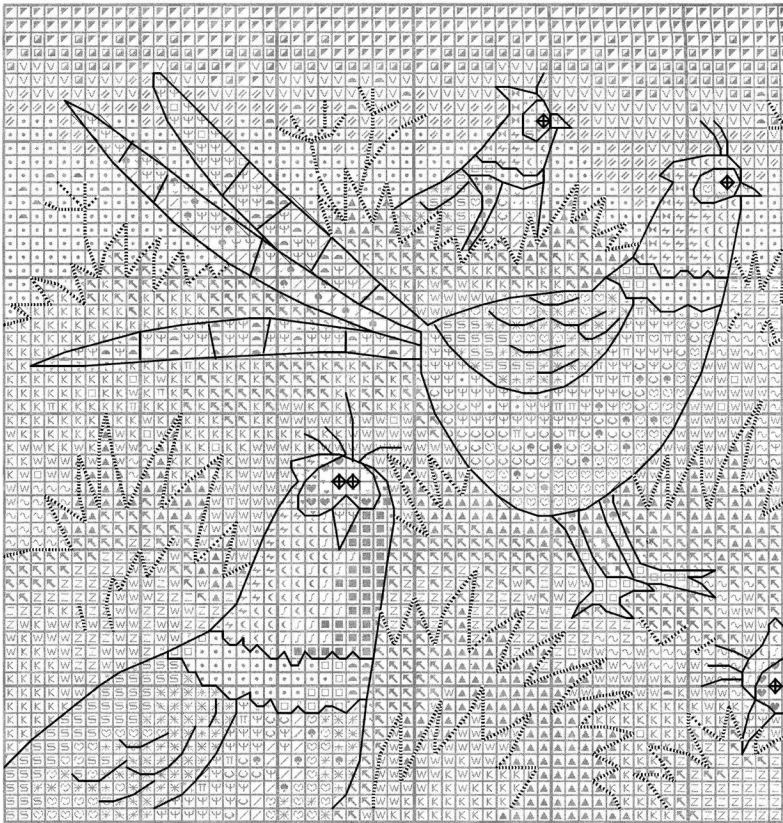
Heritage Crafts Ltd., Redbrook Lane,
Brereton, Rugeley, Staffs. WS15 1QU.

T: 01889 575256 W: www.hcrafts.com
E: enquiries@hcrafts.com

HERITAGE
Crafts

© Susan Ryder 2016

FAIR GAME



Numbers refer to DMC colours.

Outlining working in back stitch and long stitches,
using one strand of one colour.

Main outlining
— 310 (black)



- W 3819 (moss)
- V 3841 (pale blue)
- ⌘ 3842 (dark blue)
- white

Cross stitch using one strand of each of two colours.

- * 350 (red) and 946 (orange-red)
- ⌘ 704 (green) and 702 (dark green)
- ∕ 742 (light orange) and 352 (salmon)
- ⊞ 946 (orange-red) and 352 (salmon)
- K 3819 (moss) and 704 (green)
- ~ 3819 (moss) and 3078 (pale yellow)
- ▣ 3841 (pale blue) and 827 (medium blue)
- ◆ 3841 (pale blue) and white
- 3842 (dark blue) and 699 (very dark green)

Helpline

If you have any problems or require assistance in working this design, please contact:

Heritage Crafts Ltd., Redbrook Lane, Brereton, Rugeley, Staffs, WS15 1QU.

T: 01889 575256 W: www.hcrafts.com
E: enquiries@hcrafts.com



© Susan Ryder 2016