

Thread quantities listed below are for six stranded, 61cm (2ft) lengths of DMC stranded cottons.

DMC	Quantity	DMC	Quantity
155	2	745	4
210	3	798	1
211	3	809	1
310	3	3746	2
519	3	3760	2
741	2	3761	4
743	3	white	3

Numbers refer to DMC colours

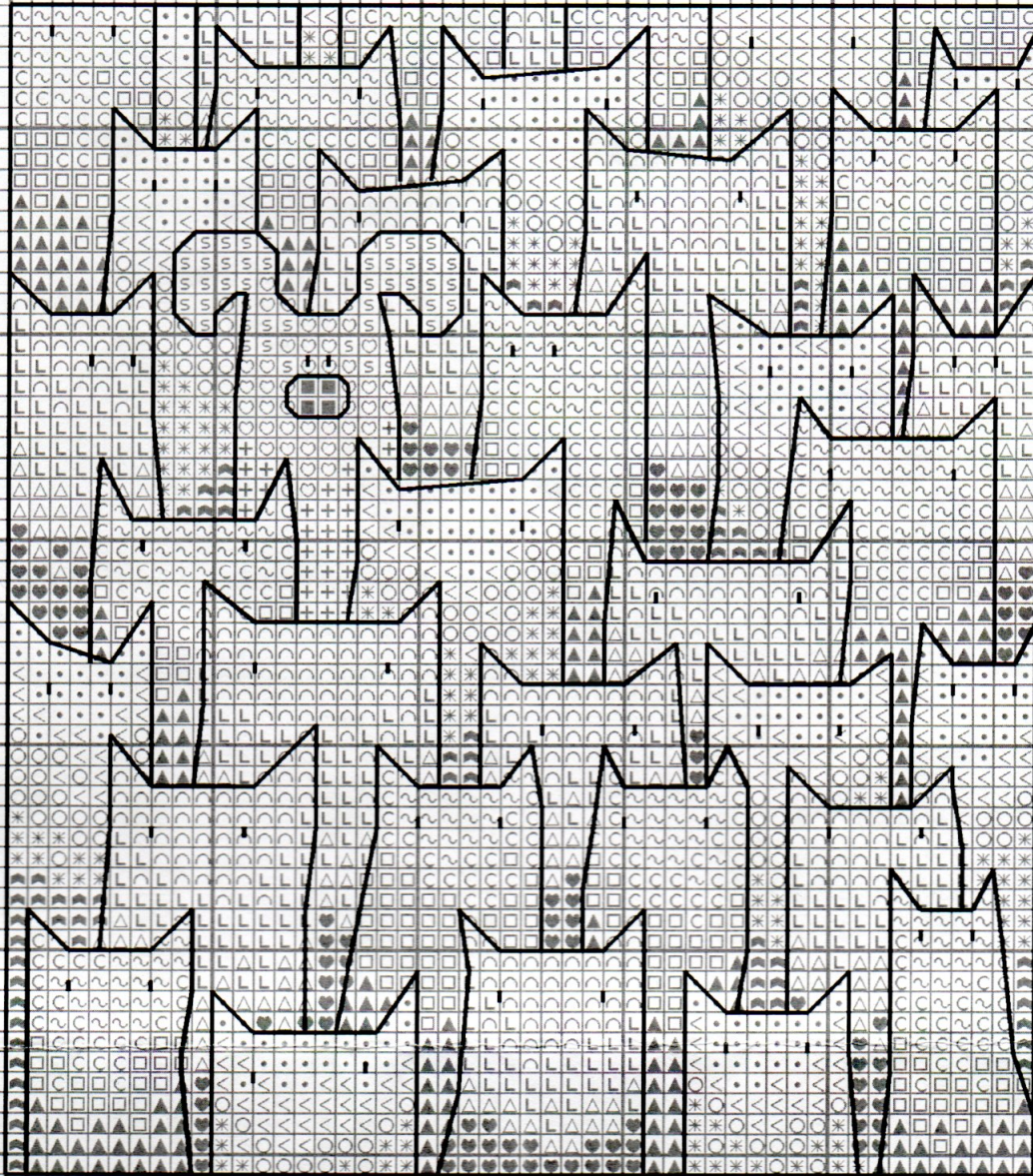
**Cross stitch** using two strands of one colour.

- △ 155 (light purple)
- L 210 (medium lilac)
- ∩ 211 (pale lilac)
- 310 (black)
- 519 (medium turquoise)
- ▲ 741 (orange)
- 743 (medium yellow)
- < 745 (pale yellow)
- + 798 (medium blue)
- S 809 (light blue)
- ♥ 3746 (dark purple)
- ▲ 3760 (dark turquoise)
- C 3761 (light turquoise)

**Cross stitch** using one strand of each of two colours.

- \* 741 (orange) and 743 (medium yellow)
- 745 (pale yellow) and white
- ♡ 798 (medium blue) and 809 (light blue)
- ~ 3761 (light turquoise) and white





# THE IMPOSTER

**Outlining** working in backstitch, and long stitches.

— 310 (black) - using 1 strand

Go over eyes twice.

HERITAGE  
*Crafts*

© Susan Ryder 2017