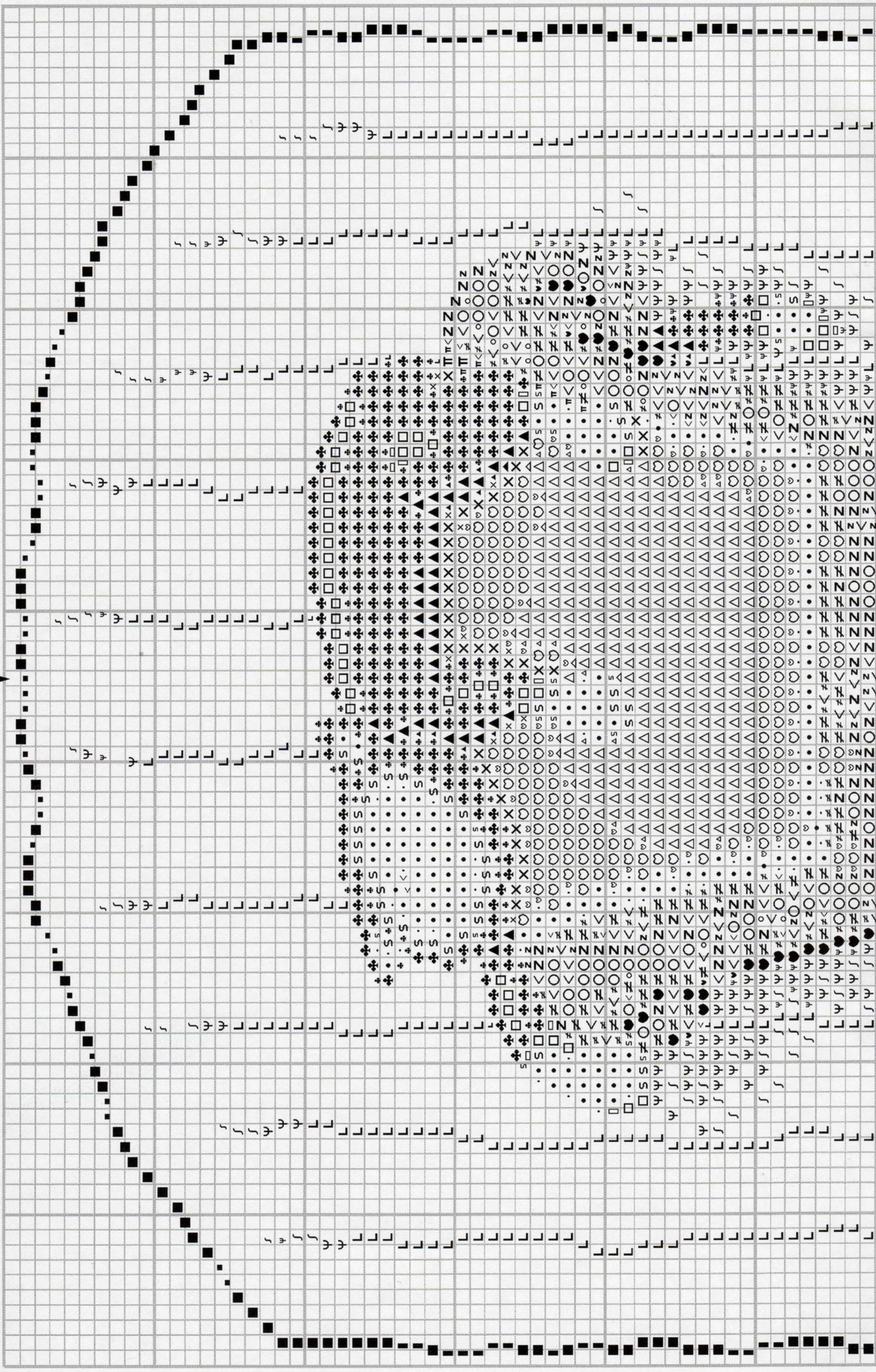
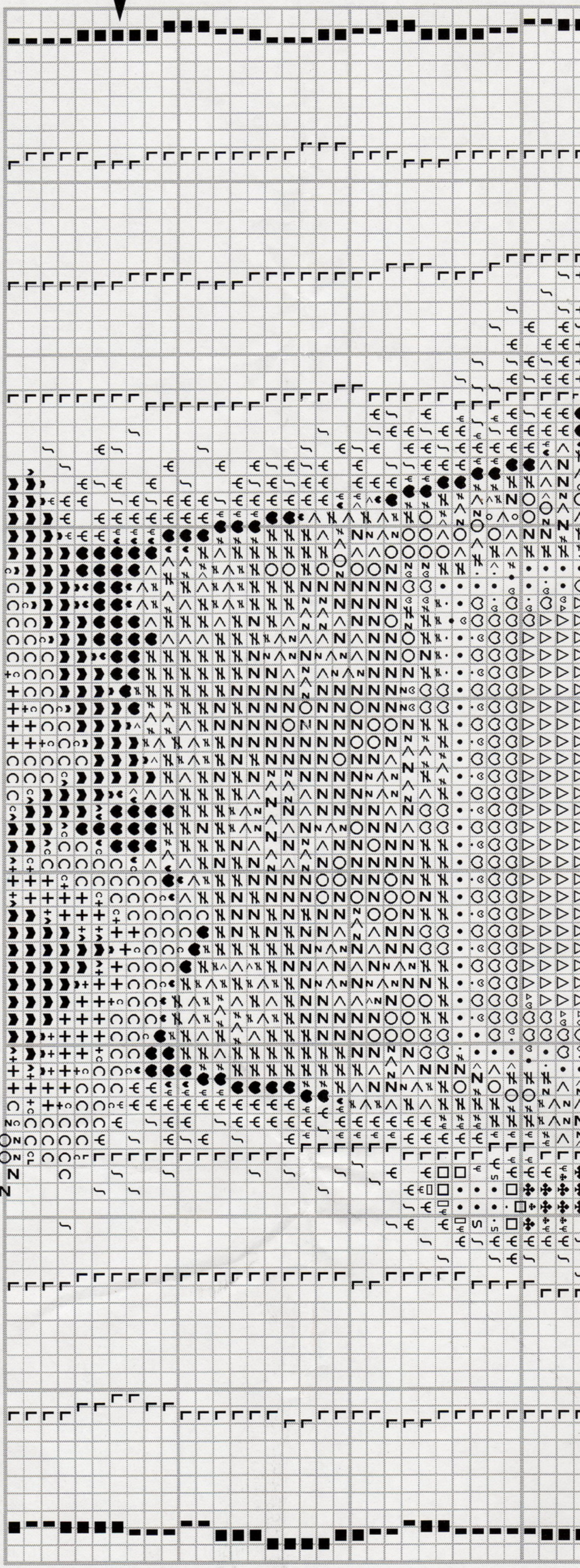


HOME IS WHERE THE CAT IS

CROSS STITCH SHEET 1







To protect these charts tape along the folds using transparent tape.

Numbers refer to DMC colours.

Thread quantities listed below are for six stranded, 61cm (2ft) lengths of DMC stranded cottons.

DMC	Quantity	DMC	Quantity
310	8	762	1
317	1	902	3
347	6	950	2
407	1	976	2
414	3	3328	6
415	1	3689	3
452	2	3726	2
611	1	3753	2
613	1	3770	2
760	5	3827	4
761	7	3865	5

Cross stitch using one strand of one colour.

- L 760 (dark pink)
- ψ 761 (medium pink)
- ∫ 3689 (light cold pink)

Cross stitch using two strands of one colour.

- 310 (black)
- ▲ 317 (dark grey)
- ≠ 347 (dark red)
- × 407 (medium salmon)
- ♣ 414 (medium grey)
- 415 (light grey)
- + 452 (light grey brown)
- ✕ 611 (light brown)
- \* 613 (fawn)
- 760 (dark pink)
- ∇ 761 (medium pink)
- ∩ 762 (very light grey)
- ♠ 902 (maroon)
- ♥ 950 (light salmon)
- 976 (very dark apricot)
- ∩ 3328 (medium red)
- ∩ 3689 (light cold pink)
- ∩ 3726 (very dark pink)
- ∩ 3753 (light blue grey)
- ∩ 3770 (light apricot)
- ∩ 3827 (medium apricot)
- 3865 (soft white)

**Helpline**  
If you have any problems or require assistance in working this design, please contact:

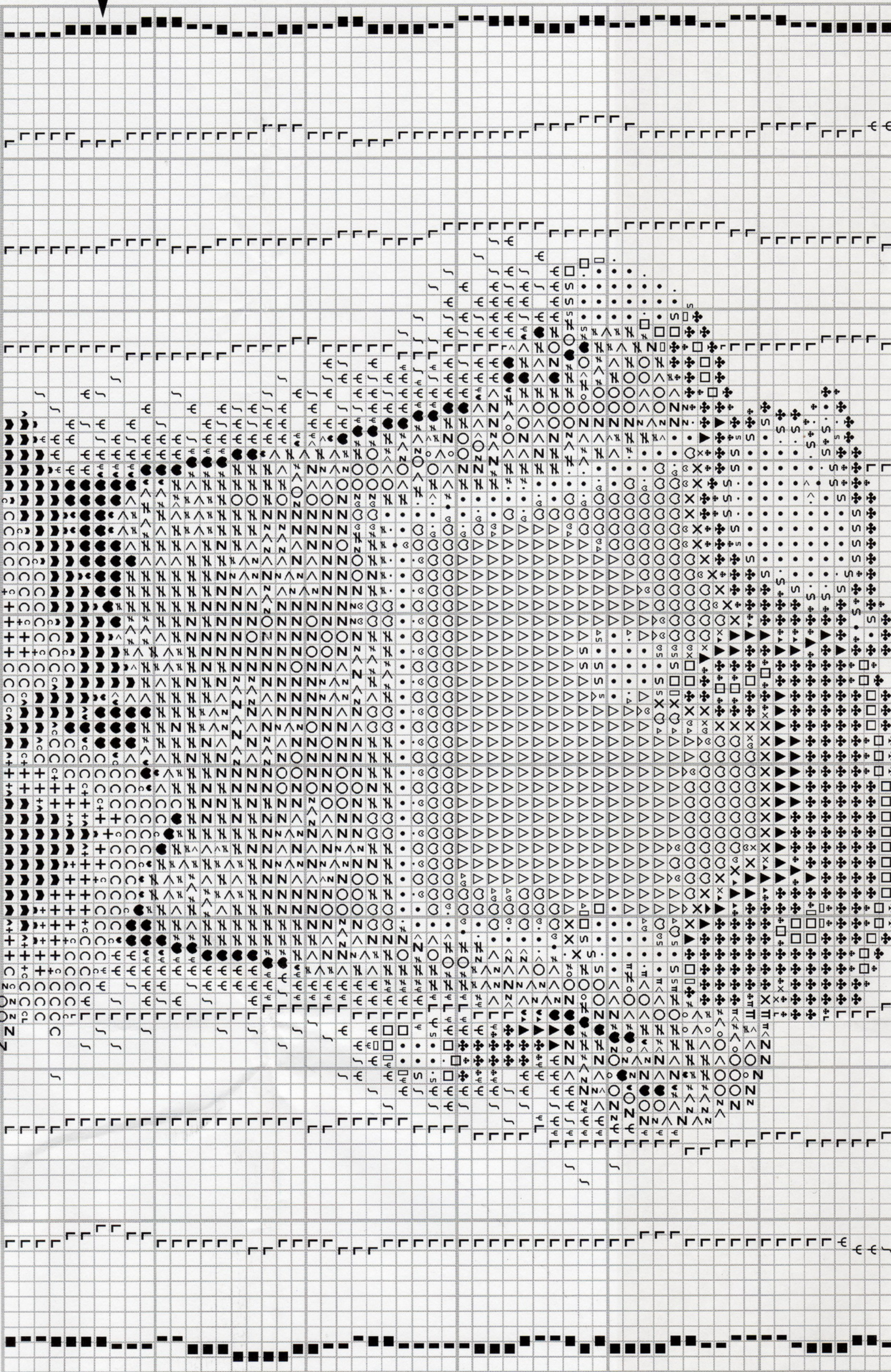
Heritage Crafts Ltd., Redbrook Lane,  
Brereton, Rugeley, Staffs. WS15 1QU.  
Phone 01889 575256.



© Copyright 2009



To protect these charts tape along the folds using transparent tape.



Cross stitch using two strands of one colour.

■ 310 (black)

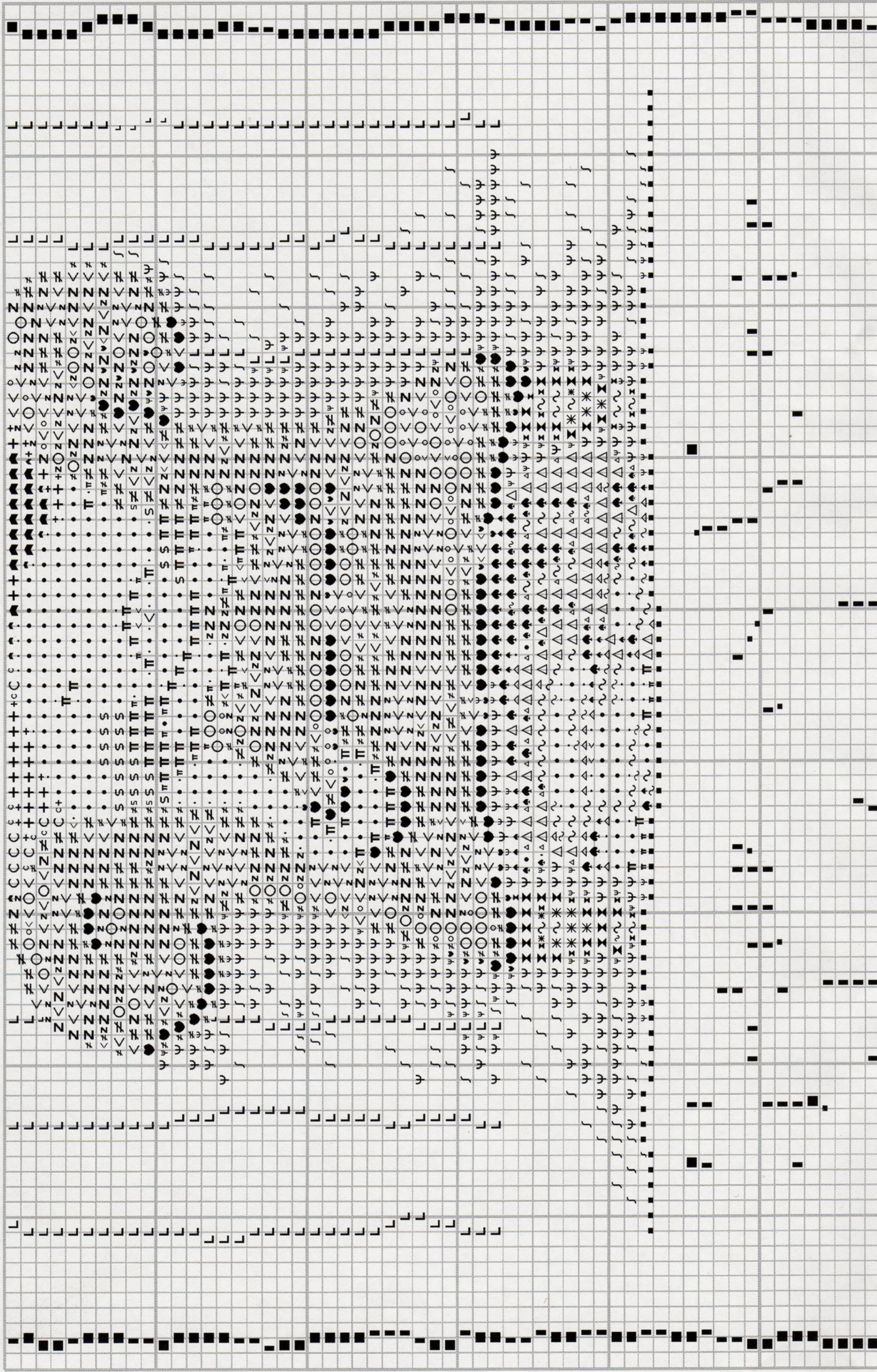
▲ 317 (dark grey)

Helpline

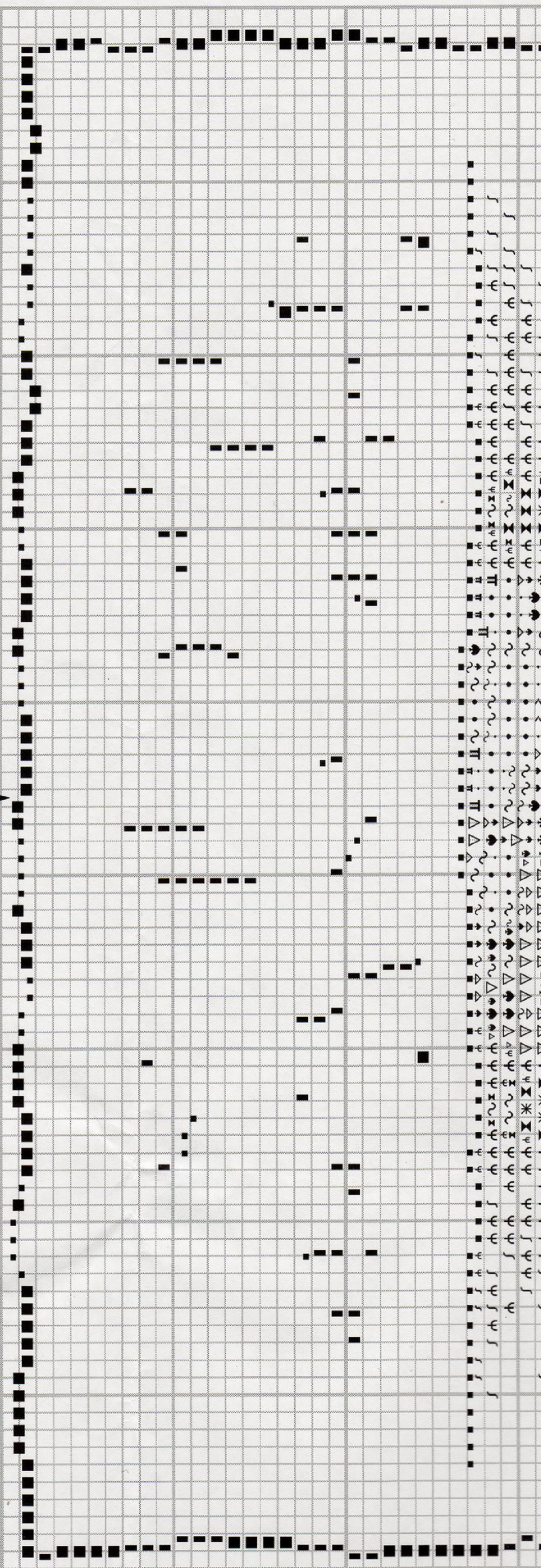
If you have any problems or require assistance in working this design,



# HOME IS WHERE THE CAT IS CROSS STITCH SHEET 2







To protect these charts tape along the folds using transparent tape.

Numbers refer to DMC colours.

Thread quantities listed below are for six stranded, 61cm (2ft) lengths of DMC stranded cottons.

DMC	Quantity	DMC	Quantity
310	8	762	1
317	1	902	3
347	6	950	2
407	1	976	2
414	3	3328	6
415	1	3689	3
452	2	3726	2
611	1	3753	2
613	1	3770	2
760	5	3827	4
761	7	3865	5

**Cross stitch** using one strand of one colour.

- L 760 (dark pink)
- ψ 761 (medium pink)
- J 3689 (light cold pink)

**Cross stitch** using two strands of one colour.

- 310 (black)
- ▲ 317 (dark grey)
- ≠ 347 (dark red)
- × 407 (medium salmon)
- ♣ 414 (medium grey)
- 415 (light grey)
- + 452 (light grey brown)
- ⋈ 611 (light brown)
- \* 613 (fawn)
- 760 (dark pink)
- < 761 (medium pink)
- ∩ 762 (very light grey)
- ♥ 902 (maroon)
- ⊖ 950 (light salmon)
- ♠ 976 (very dark apricot)
- Z 3328 (medium red)
- C 3689 (light cold pink)
- ▲ 3726 (very dark pink)
- T 3753 (light blue grey)
- ~ 3770 (light apricot)
- △ 3827 (medium apricot)
- 3865 (soft white)

**For Lettering, work outlining and cross stitch together using one strand of cotton and going over each cross twice.**

**Helpline**

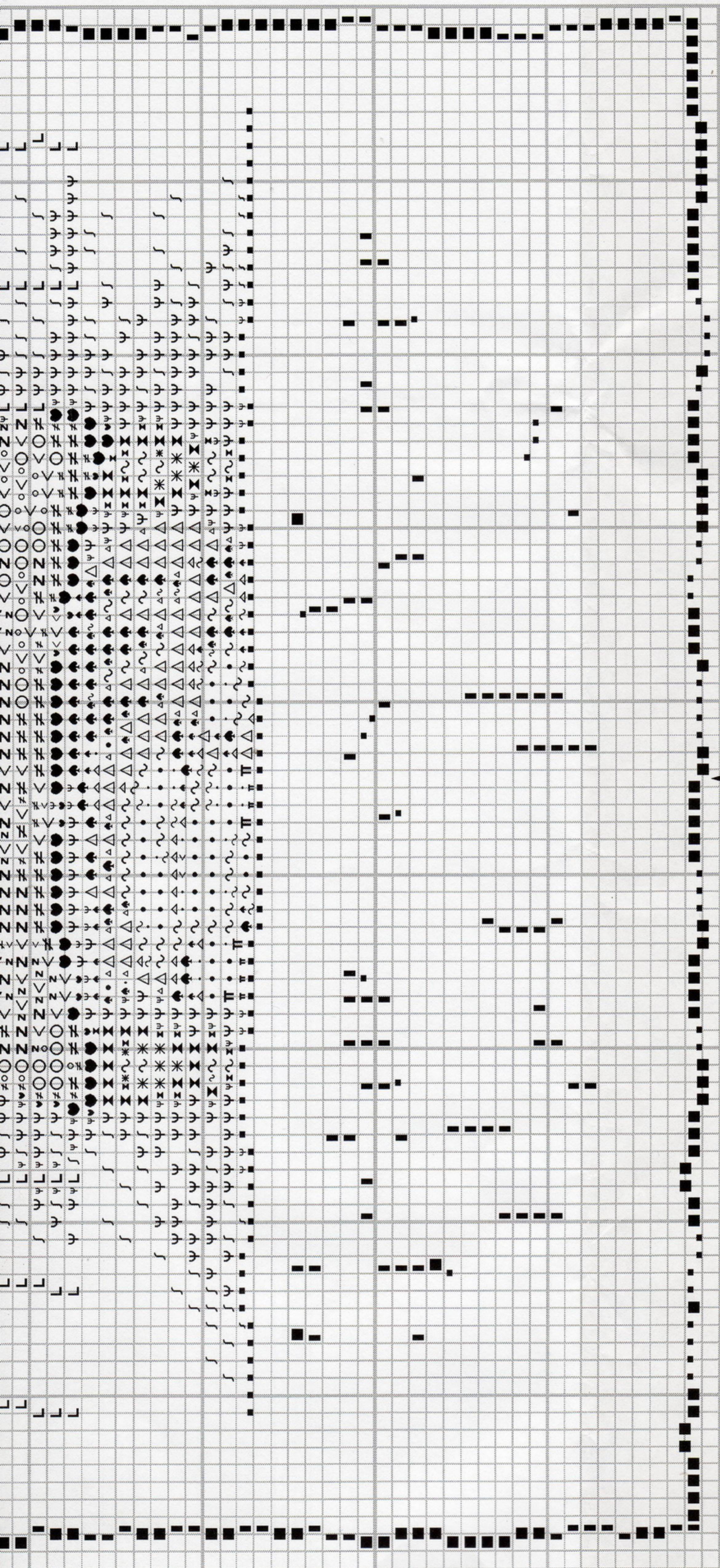
If you have any problems or require assistance in working this design, please contact:

Heritage Crafts Ltd., Redbrook Lane,  
Brereton, Rugeley, Staffs. WS15 1QU.  
Phone 01889 575256.



© Copyright 2009





To protect these charts tape along the folds using transparent tape.

Numbers refer to DMC colours.

Thread quantities listed below are for six stranded, 61cm (2ft) lengths of DMC stranded cottons.

DMC	Quantity	DMC	Quantity
310	8	762	1
317	1	902	3
347	6	950	2
407	1	976	2
414	3	3328	6
415	1	3689	3
452	2	3726	2
611	1	3753	2

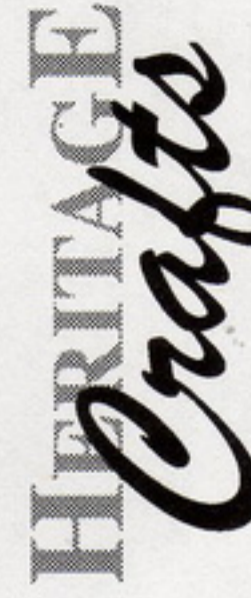
Cross stitch using two strands of one colour.

- 310 (black)
- ▲ 317 (dark grey)
- ≠ 347 (dark red)
- ✕ 407 (medium salmon)
- ♣ 414 (medium grey)
- 415 (light grey)
- ⊕ 452 (light grey brown)
- ⌘ 611 (light brown)
- ✱ 613 (fawn)
- 760 (dark pink)
- < 761 (medium pink)
- ⊞ 762 (very light grey)
- ♥ 902 (maroon)
- ♡ 950 (light salmon)
- ♣ 976 (very dark apricot)
- 7 3328 (medium red)

**For Lettering, work outlining and cross stitch together using one strand of cotton and going over each cross twice.**

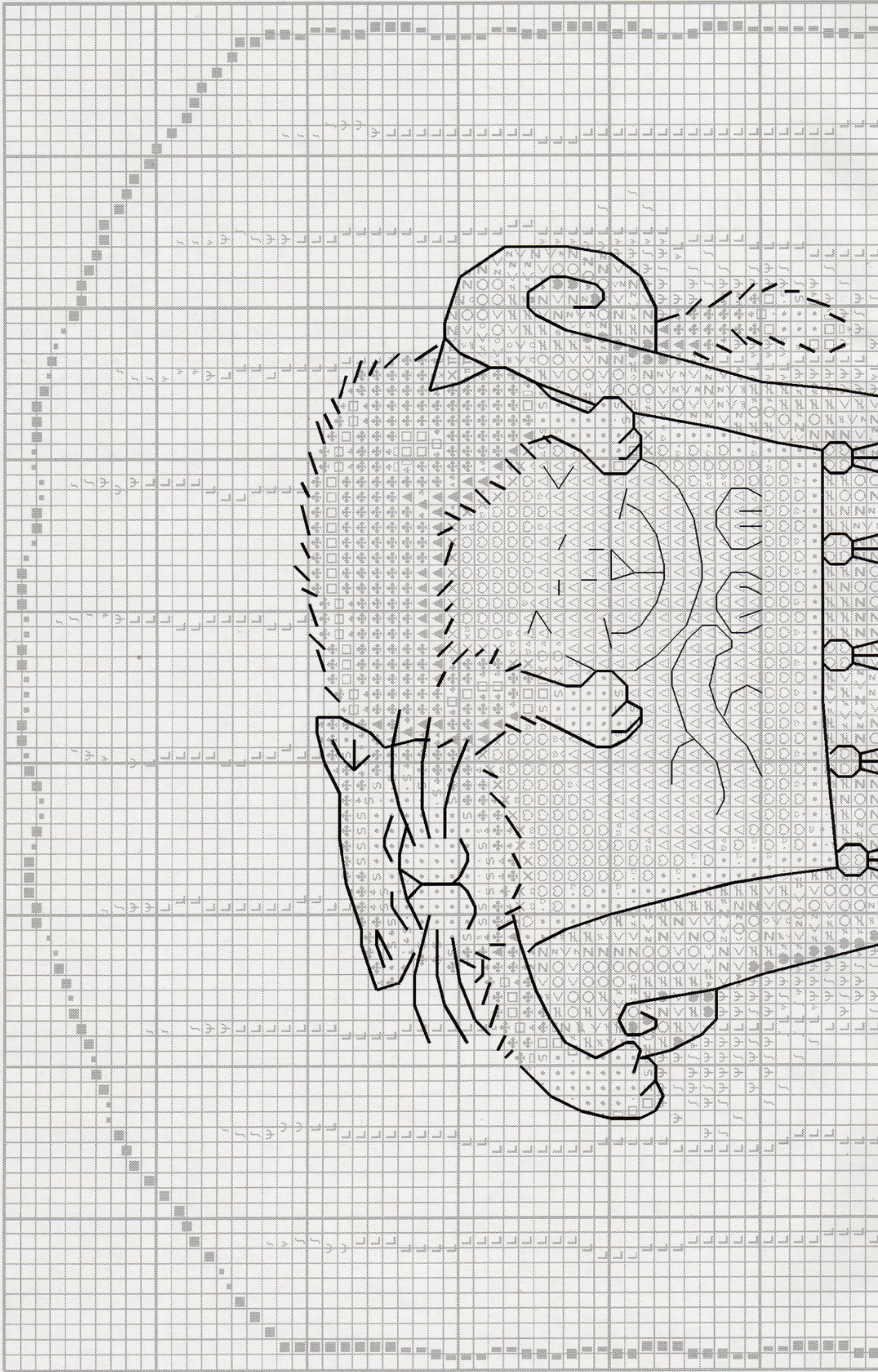
**Helpline**  
If you have any problems or require assistance in working this design, please contact:

Heritage Crafts Ltd., Redbrook Lane,  
Brereton, Rugeley, Staffs. WS15 1QU.  
Phone 01889 575256.

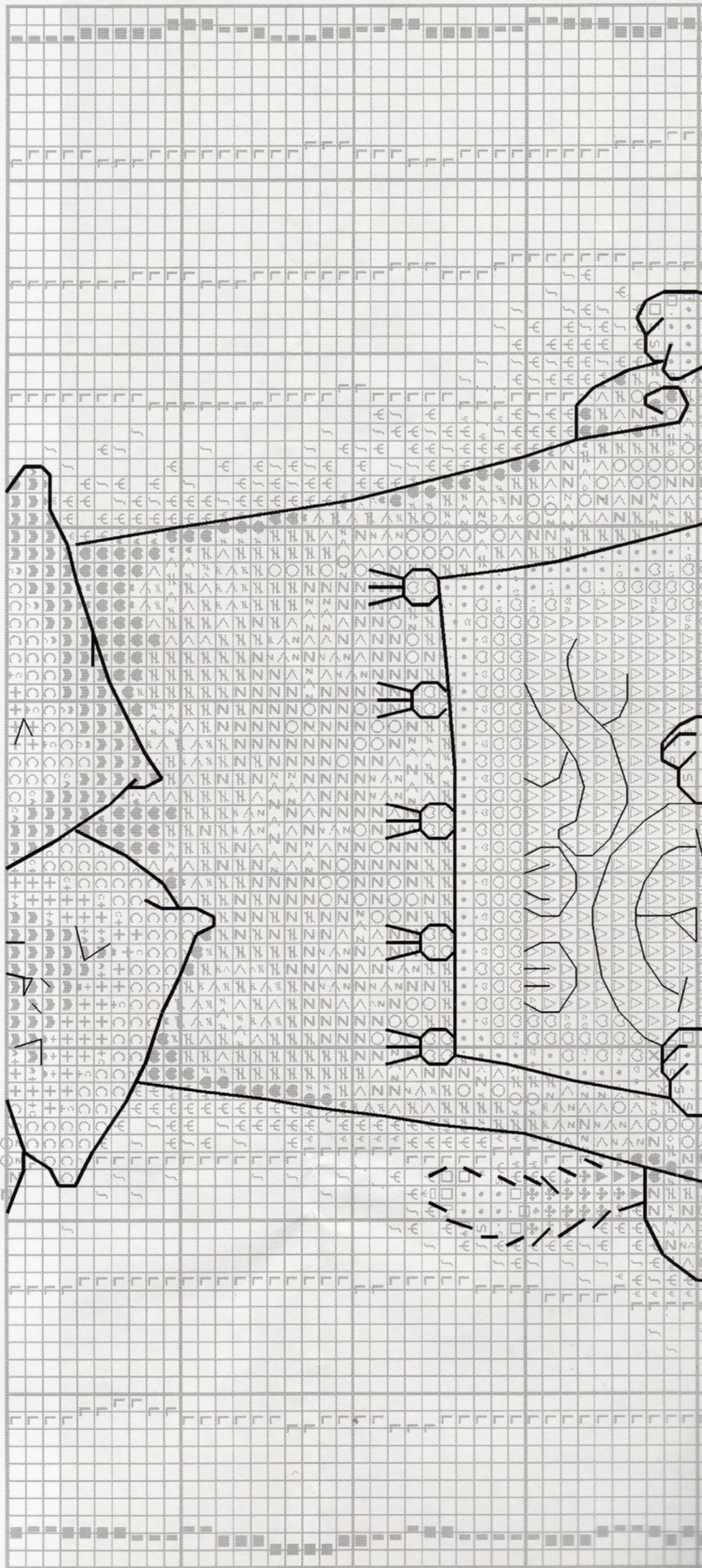




# HOME IS WHERE THE CAT IS OUTLINING SHEET 3







To protect these charts tape along the folds using transparent tape.

Numbers refer to DMC colours.

**Outlining** working in backstitch and long stitches, using one strand of one colour, unless stated otherwise.

\_\_\_\_\_ 310 (black)

**Antimacassar cat**

\_\_\_\_\_ 3770 (light apricot) - 2 strands

**Left cushion cat**

\_\_\_\_\_ 3726 (very dark pink) - 2 strands

**Right cushion cat**

\_\_\_\_\_ 3689 (light cold pink) - 2 strands

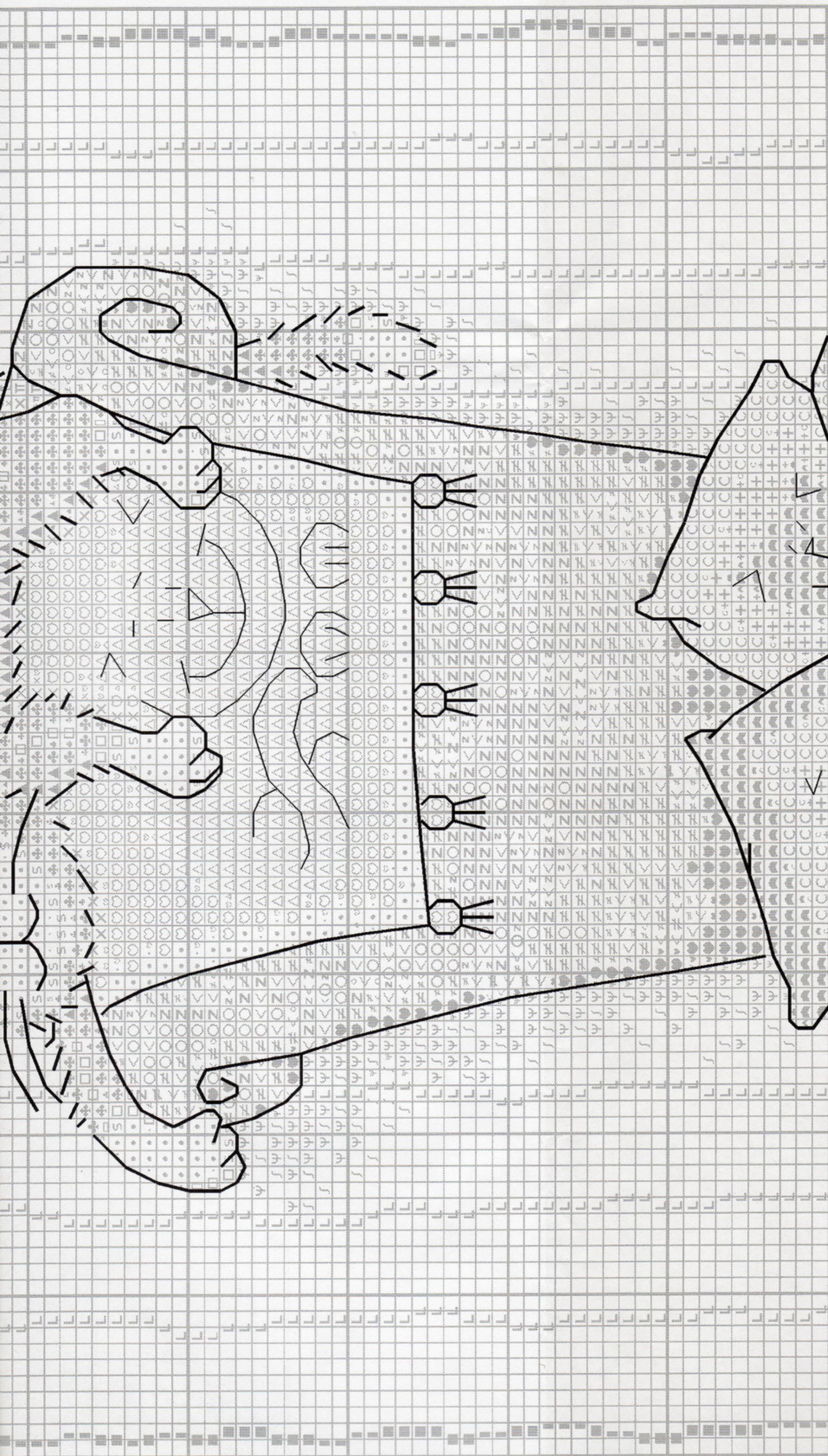
**Helpline**  
If you have any problems or require assistance in working this design, please contact:

Heritage Crafts Ltd., Redbrook Lane,  
Brereton, Rugeley, Staffs. WS15 1QU.  
Phone 01889 575256.

**HERITAGE**  
*Crafts*

© Copyright 2008





To protect these charts tape along the folds using transparent tape.

Numbers refer to DMC colours.

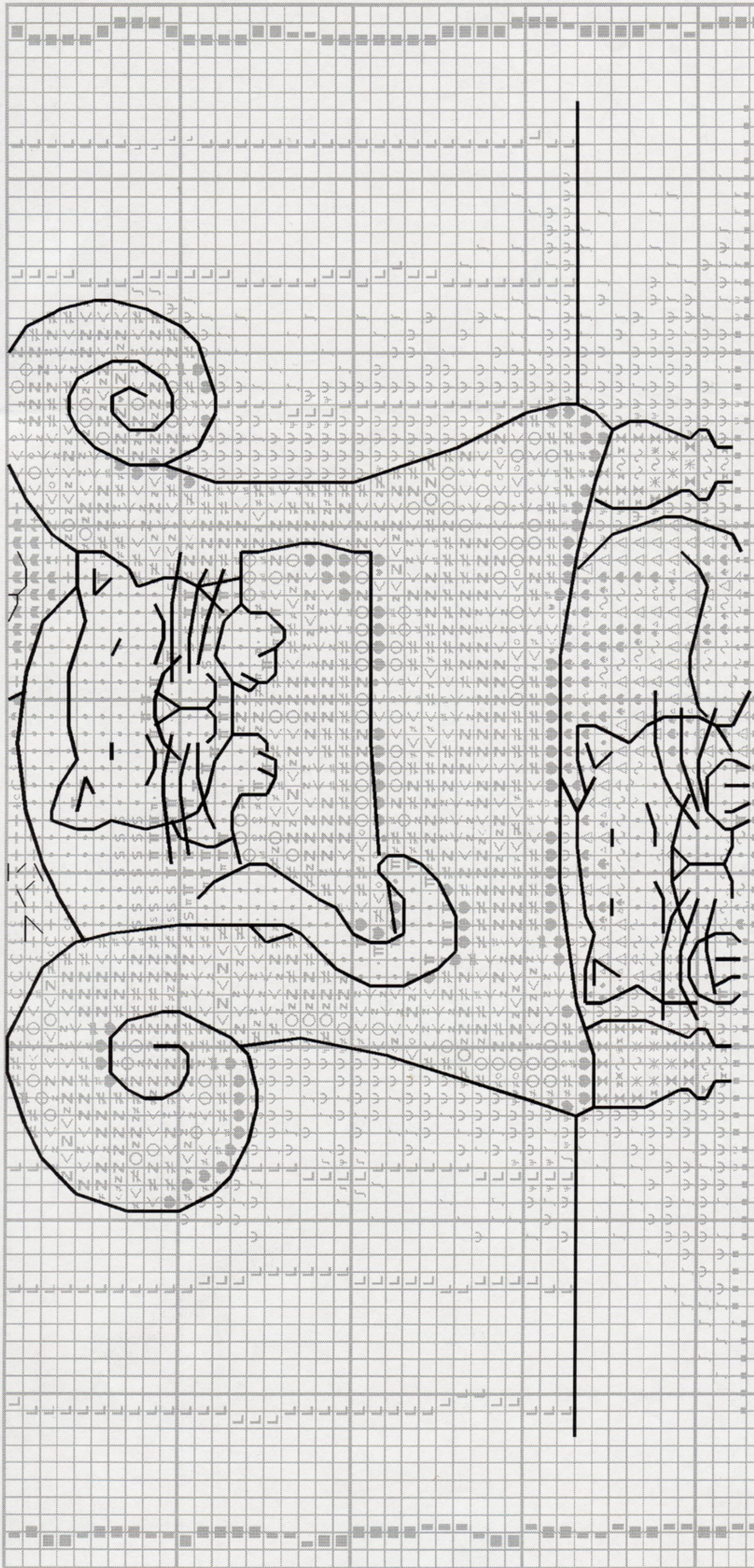
**Outlining** working in backstitch and long stitches, using one strand of one colour, unless stated otherwise.

**Helpline**  
If you have any problems or require assistance in working this design, please contact:

Heritage Crafts Ltd., Redbrook Lane,  
Brereton, Rugeley, Staffs. WS15 1QU.  
Phone 01889 575256.

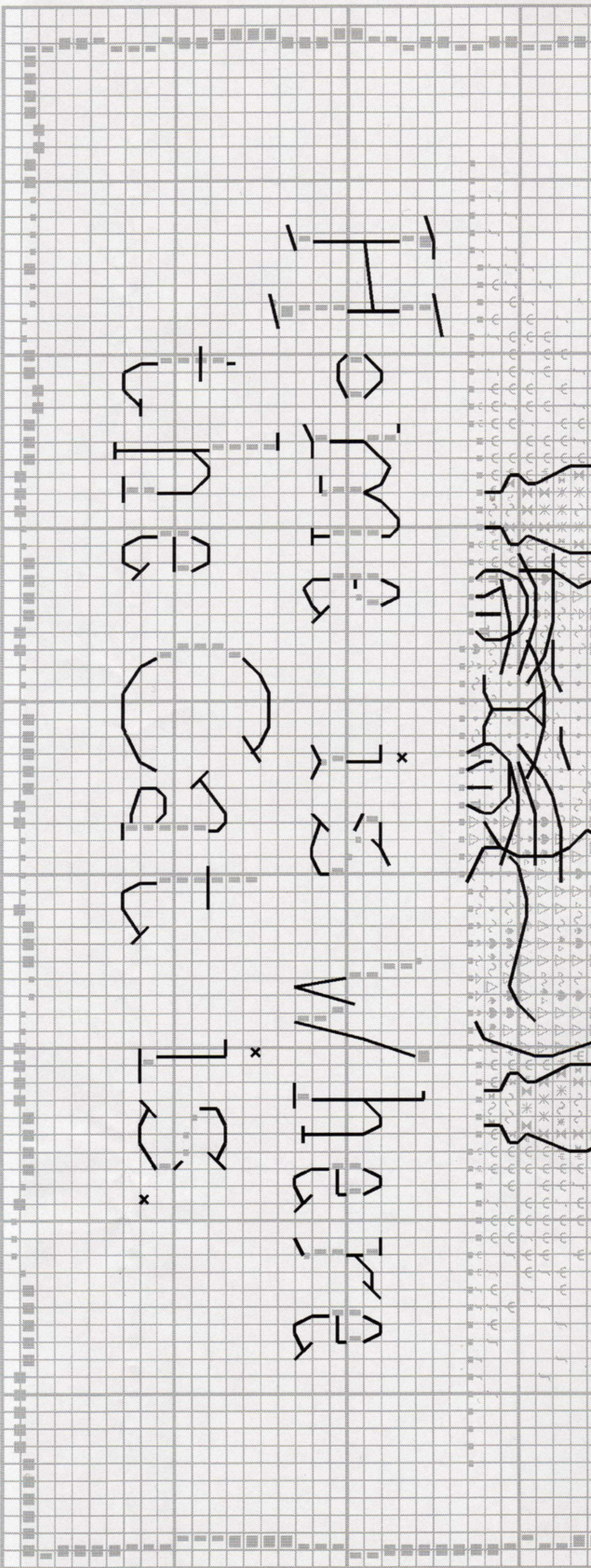


HOME IS WHERE THE CAT IS OUTLINING SHEET 4



HOME IS WHERE THE CAT IS





To protect these charts tape along the folds using transparent tape.

Numbers refer to DMC colours.

**Outlining** working in backstitch and long stitches, using one strand of one colour, unless stated otherwise.

\_\_\_\_\_ 310 (black)

**Antimacassar cat**

\_\_\_\_\_ 3770 (light apricot) - 2 strands

**Left cushion cat**

\_\_\_\_\_ 3726 (very dark pink) - 2 strands

**Right cushion cat**

\_\_\_\_\_ 3689 (light cold pink) - 2 strands

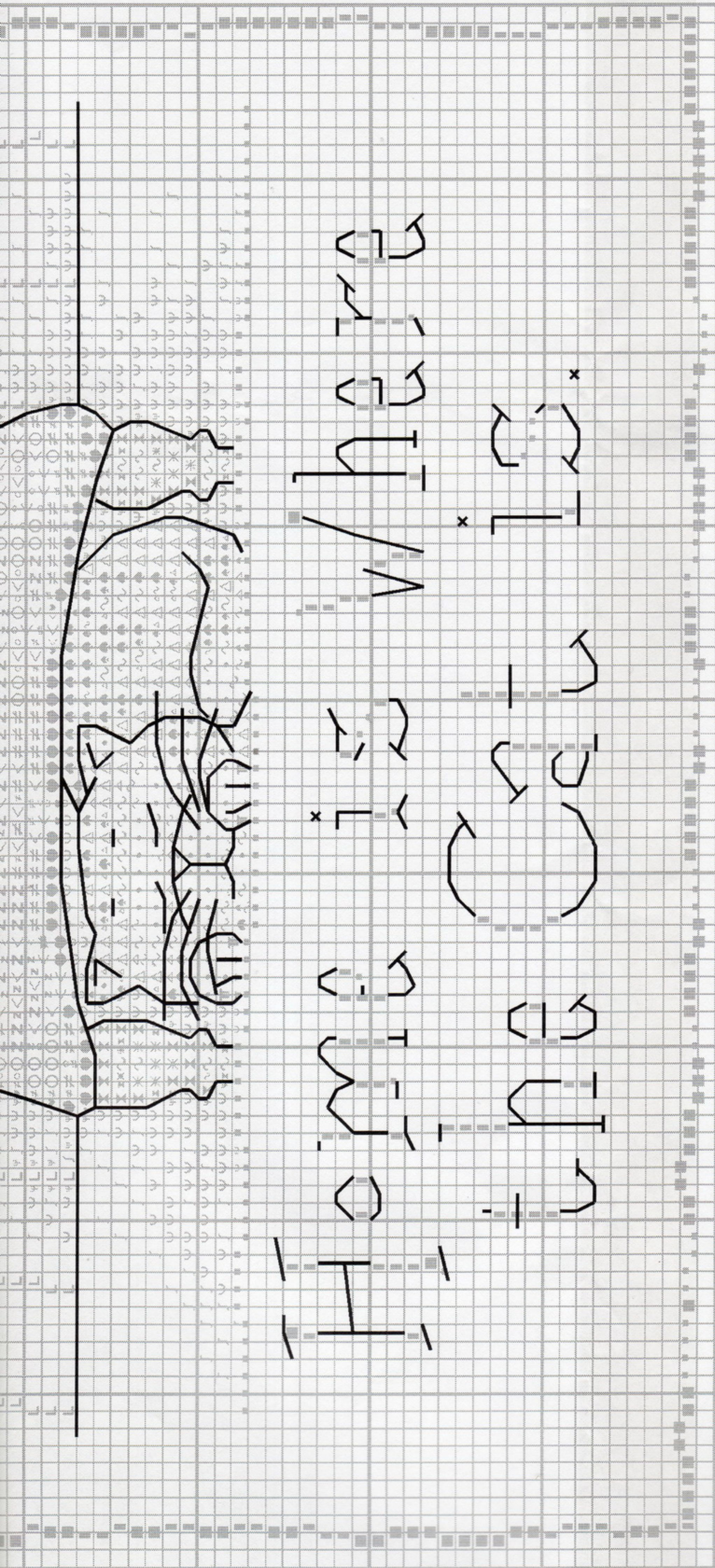
**For Lettering, work outlining and cross stitch together using one strand of cotton and going over each cross twice.**

**Helpline**  
If you have any problems or require assistance in working this design, please contact:

Heritage Crafts Ltd., Redbrook Lane,  
Brereton, Rugeley, Staffs. WS15 1QU.  
Phone 01889 575256.

**HERITAGE**  
*Crafts*  
© Copyright 2008





To protect these charts tape along the folds using transparent tape.

Numbers refer to DMC colours.

**Outlining** working in backstitch and long stitches, using one strand of one colour, unless stated otherwise.

— 310 (black)

**Antimacassar cat**

— 3770 (light apricot) - 2 strands

**Left cushion cat**

— 3726 (very dark pink) - 2 strands

**Right cushion cat**

— 3689 (light cold pink) - 2 strands

**Helpline**

If you have any problems or require assistance in working this design, please contact:

Heritage Crafts Ltd., Redbrook Lane,  
Brereton, Rugeley, Staffs. WS15 1QU.  
Phone 01889 575256.



© Copyright 2008