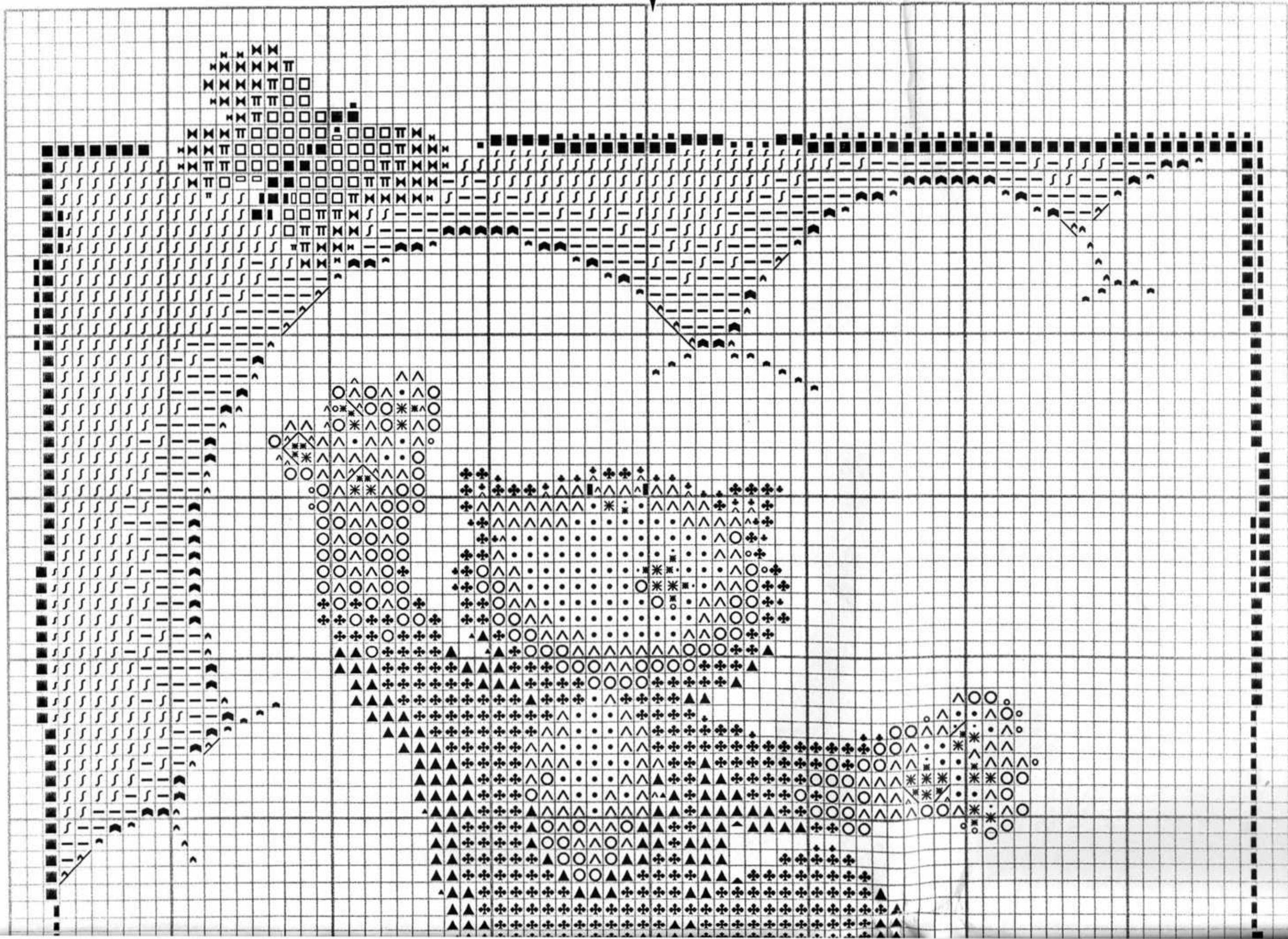
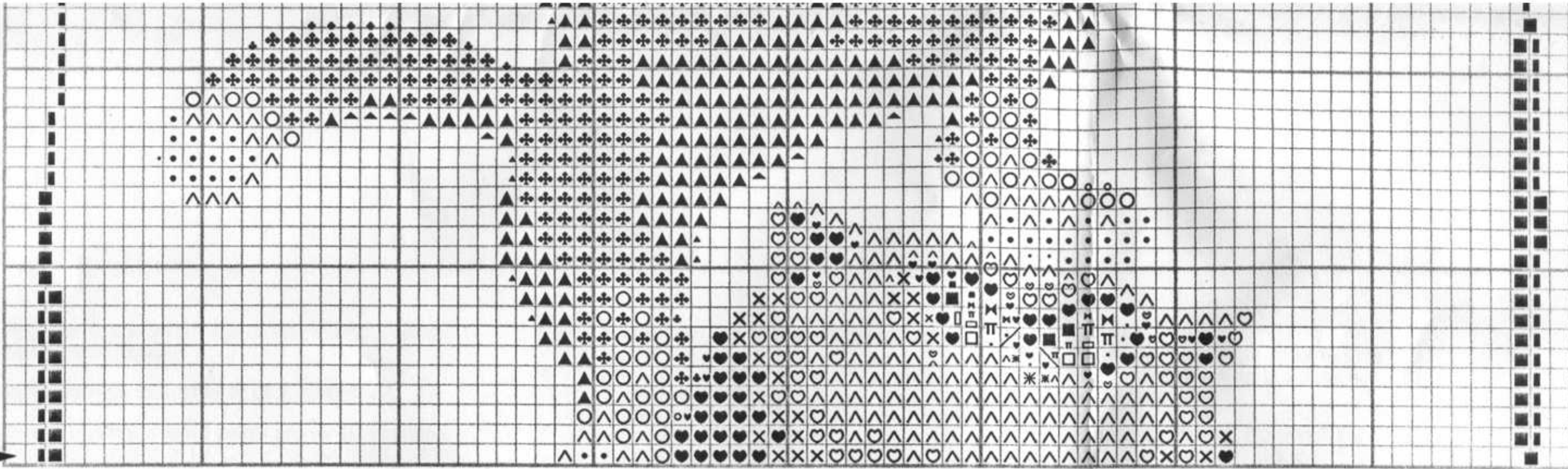



# TEAMWORK CROSS STITCH SHEET 1 \* \*





To protect these charts tape along the folds using  transparent tape.

Numbers refer to Anchor or DMC colours.

Thread quantities listed below are for six stranded, 61cm (2ft) lengths of DMC/Anchor stranded cottons.

No.	Quantity	No.	Quantity
2 A	3	403 A	7
235 A	4	762 D	4
295 A	1	1001 A	3
298 A	1	1002 A	2
343 A	5	1009 A	2
361 A	3	1021 A	1
362 A	4	1034 A	3
398 A	2	1096 A	4
400 A	3		

**Cross stitch using one strand of each of two colours.**  
 ♥ 343 A (m. blue grey) & 1034 A (dark blue grey)  
 TT 395 A (medium gold) & 298 A (dark gold)

**Cross stitch using two strands of one colour.**

- 2 A (soft white)
- ♣ 235 A (medium grey)
- 295 A (medium gold)
- ✕ 298 A (dark gold)
- X 343 A (medium blue grey)
- C 361 A (medium apricot)
- △ 362 A (dark apricot)
- 398 A (light grey)
- ▲ 400 A (dark grey)
- 403 A (black)
- ∧ 762 D (very light blue grey)
- ♣ 1001 A (dark copper)
- Z 1002 A (medium copper)
- ~ 1009 A (light apricot)
- \* 1021 A (pink)
- ♡ 1096 A (light blue grey)

**Cross stitch using one strand of one colour.**

- 343 A (medium blue grey)
- ∧ 1034 A (dark blue grey)
- ∫ 1096 A (light blue grey)

**Helpline**

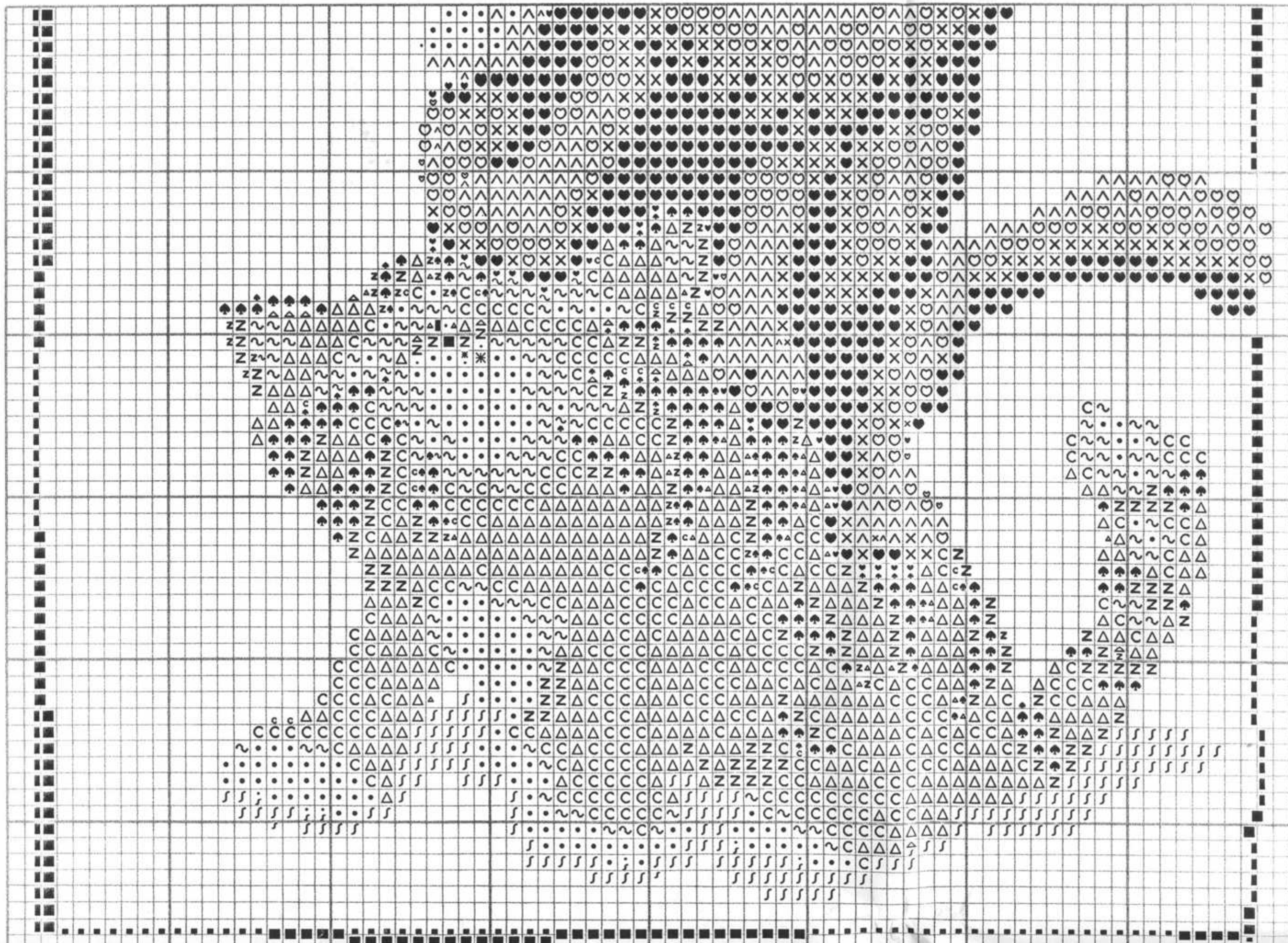
If you have any problems or require assistance in working this design, please contact:

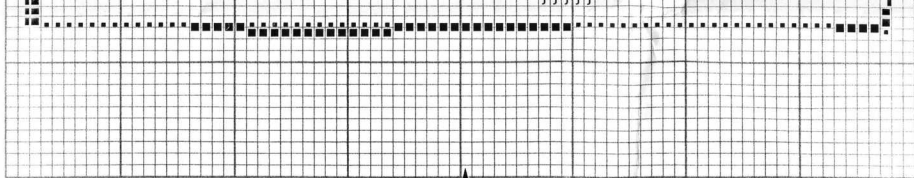
Heritage Crafts Ltd., Redbrook Lane,  
 Brereton, Rugeley, Staffs. WS15 1QU.  
 Phone 01889 575256.

**HERITAGE**  
*Crafts*

© Copyright 2008

# TEAMWORK CROSS STITCH SHEET 2





To protect these charts tape along the folds using transparent tape.

Numbers refer to Anchor or DMC colours.

Thread quantities listed below are for six stranded, 61cm (2ft) lengths of DMC/Anchor stranded cottons.

No.	Quantity	No.	Quantity
2 A	3	403 A	7
235 A	4	762 D	4
295 A	1	1001 A	3
298 A	1	1002 A	2
343 A	5	1009 A	2
361 A	3	1021 A	1
362 A	4	1034 A	3
398 A	2	1096 A	4
400 A	3		

**Cross stitch using one strand of each of two colours.**

- ♥ 343 A (m. blue grey) & 1034 A (dark blue grey)
- TT 395 A (medium gold) & 298 A (dark gold)

**Cross stitch using two strands of one colour.**

- 2 A (soft white)
- ♣ 235 A (medium grey)
- 295 A (medium gold)
- ✠ 298 A (dark gold)
- × 343 A (medium blue grey)
- C 361 A (medium apricot)
- △ 362 A (dark apricot)
- 398 A (light grey)
- ▲ 400 A (dark grey)
- 403 A (black)
- △ 762 D (very light blue grey)
- ♣ 1001 A (dark copper)
- Z 1002 A (medium copper)
- ~ 1009 A (light apricot)
- ✱ 1021 A (pink)
- ♡ 1096 A (light blue grey)

**Cross stitch using one strand of one colour.**

- 343 A (medium blue grey)
- ▲ 1034 A (dark blue grey)
- ∫ 1096 A (light blue grey)

### Helpline

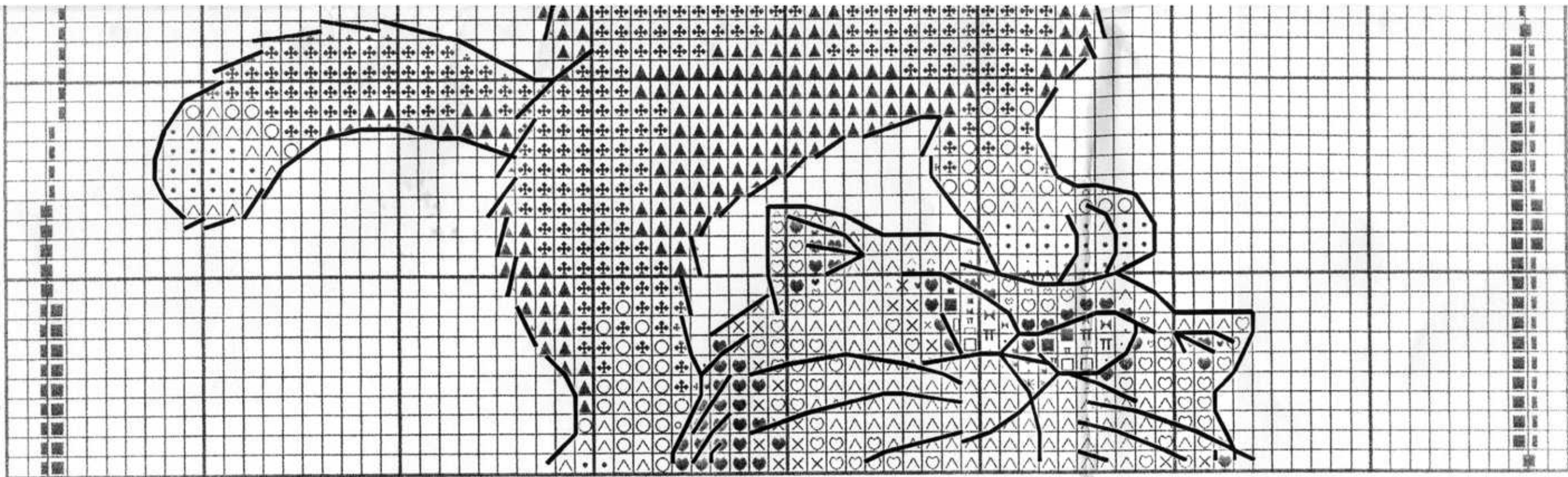
If you have any problems or require assistance in working this design, please contact:

Heritage Crafts Ltd., Redbrook Lane,  
Brereton, Rugeley, Staffs. WS15 1QU.  
Phone 01889 575256.

HERITAGE  
*Crafts*

© Copyright 2008





To protect these charts tape along the folds using transparent tape.

Numbers refer to Anchor or DMC colours.

**Outlining** working in backstitch and long stitches, using one strand of one colour, unless stated otherwise.

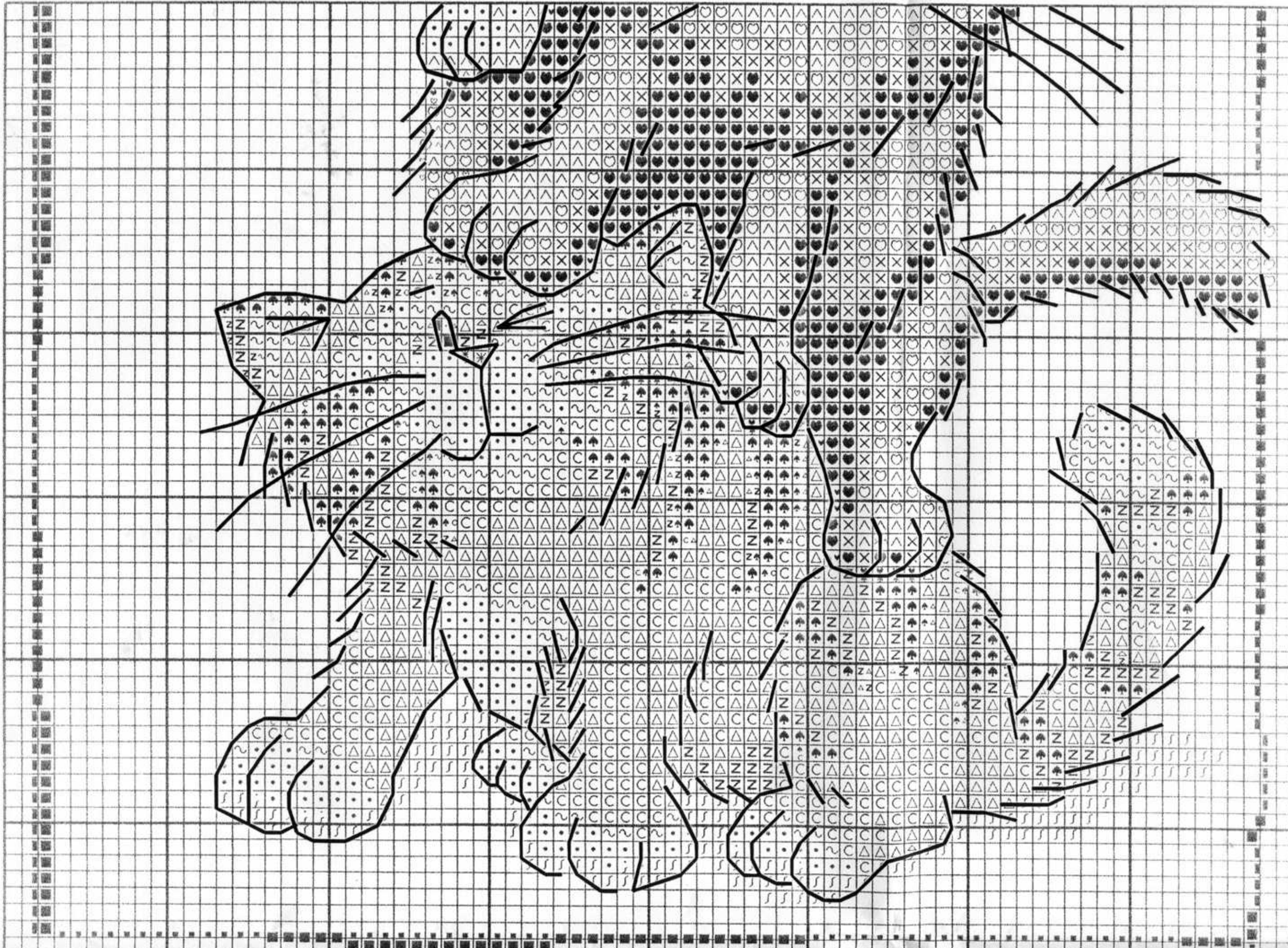
——— 403 A (black)

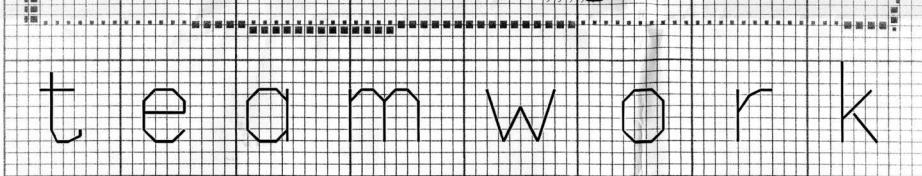
#### Helpline

If you have any problems or require assistance in working this design, please contact:

Heritage Crafts Ltd., Redbrook Lane,  
Brereton, Rugeley, Staffs. WS15 1QU.  
Phone 01889 575256.

**HERITAGE**  
*Crafts*  
© Copyright 2008





To protect these charts tape along the folds using transparent tape.

Numbers refer to Anchor or DMC colours.

**Outlining** working in backstitch and long stitches, using one strand of one colour, unless stated otherwise.

—— 403 A (black)

#### Helpline

If you have any problems or require assistance in working this design, please contact:

Heritage Crafts Ltd., Redbrook Lane,  
Brereton, Rugeley, Staffs. WS15 1QU.  
Phone 01889 575256.

HERITAGE  
*Crafts*

© Copyright 2008