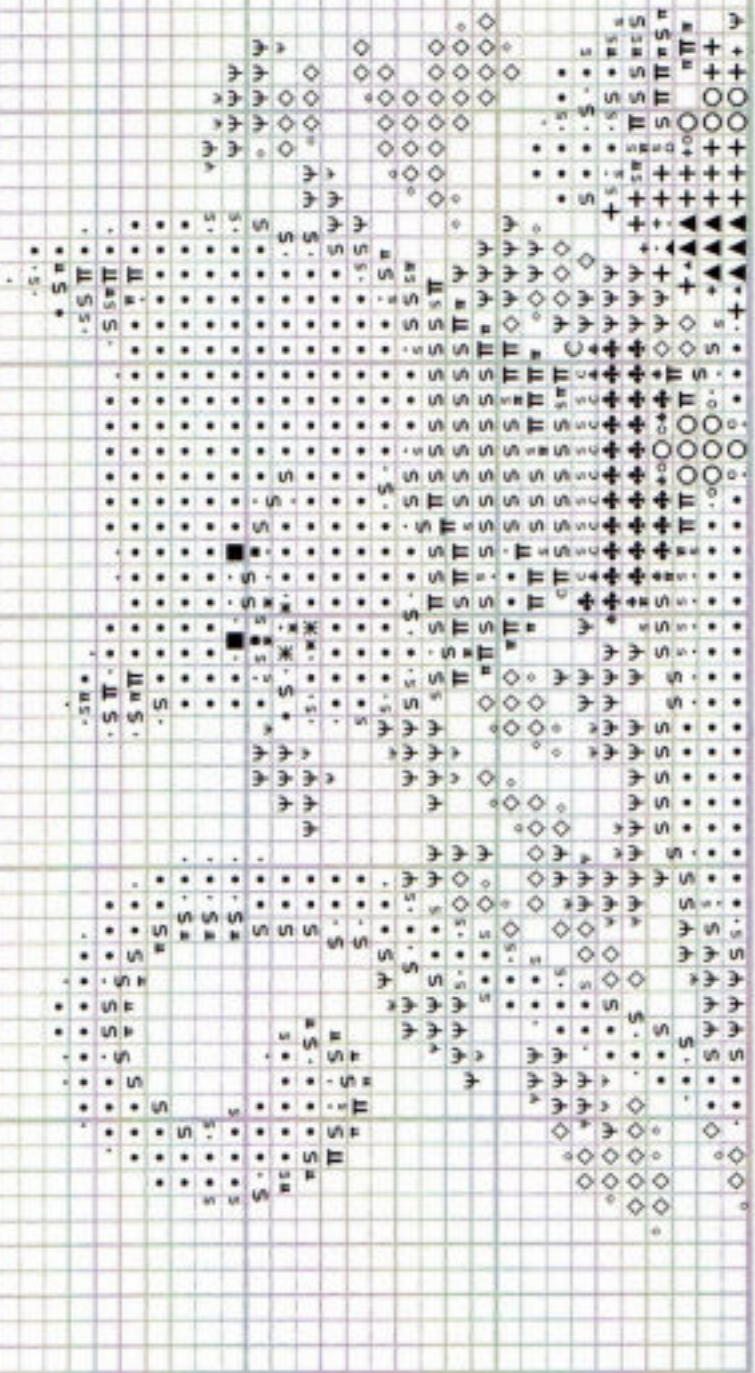
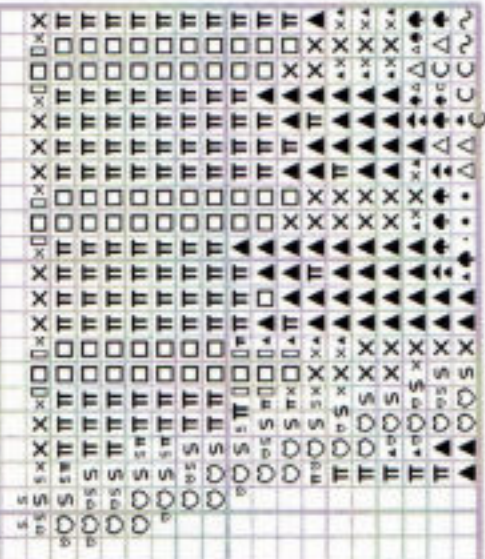


JULY CAT



AUGUST CAT



PLEASE NOTE: Symbols shared between each cat may not represent the same colour.
Please refer to cross stitch key for each individual cat

The centre of the chart is marked on this sheet with arrows.

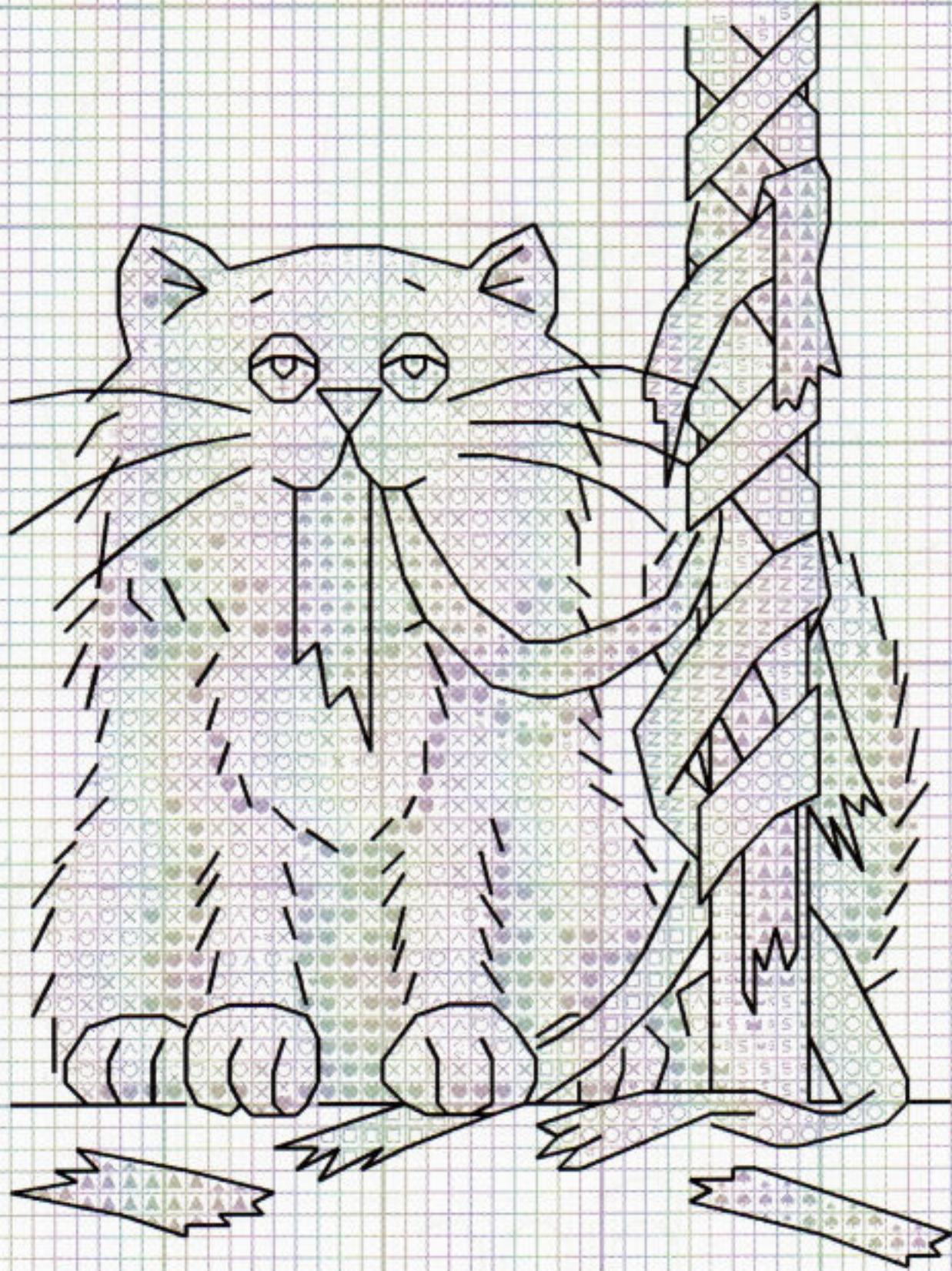
Helpine
If you have any problems or require assistance in working this design, please contact:

Heritage Crafts Ltd.,
Redbrook Lane, Brereton,
Rugeley, Staffs. WS15 1QU.
Phone 01889 575256

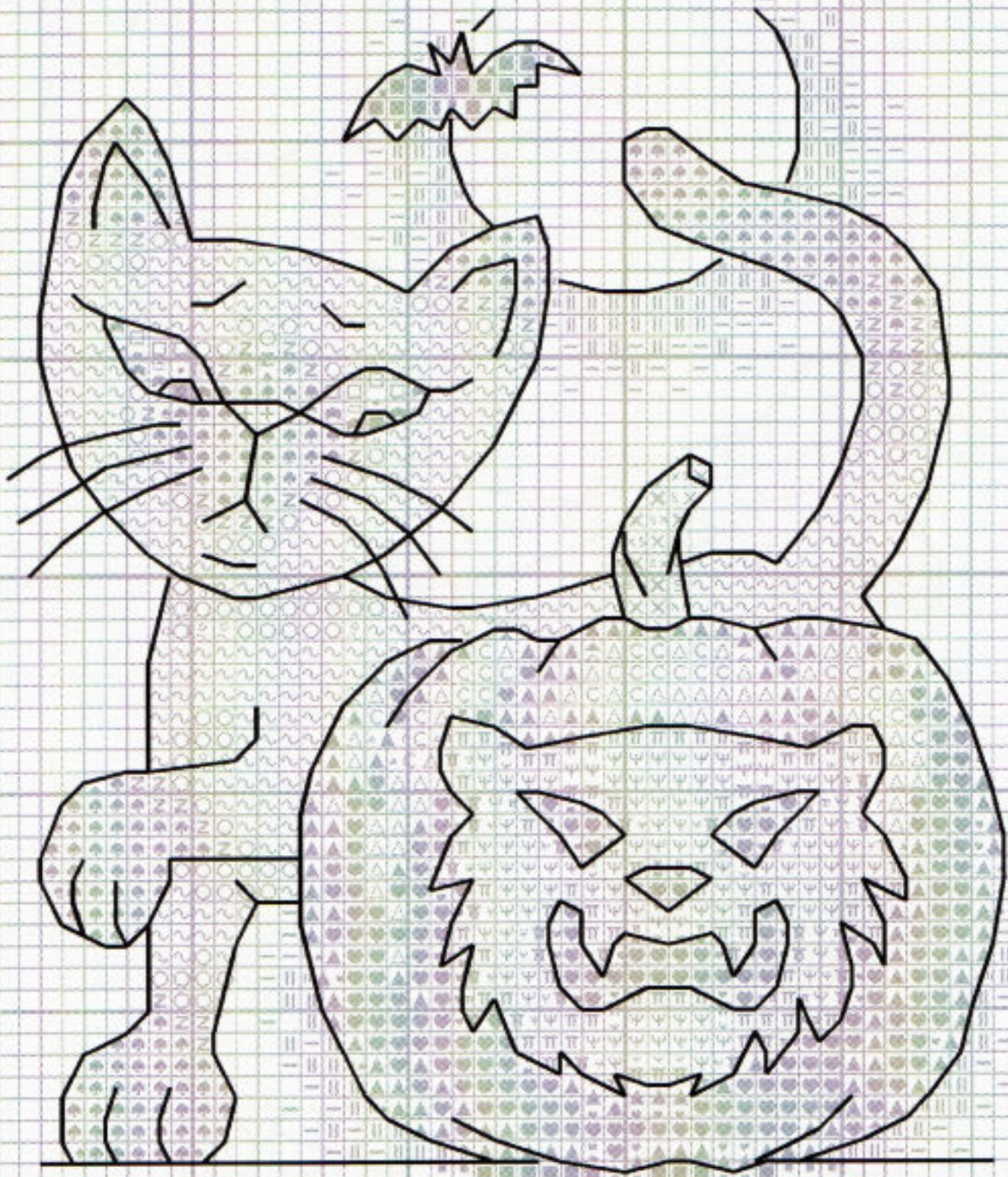


© Heritage Crafts Ltd. 2009

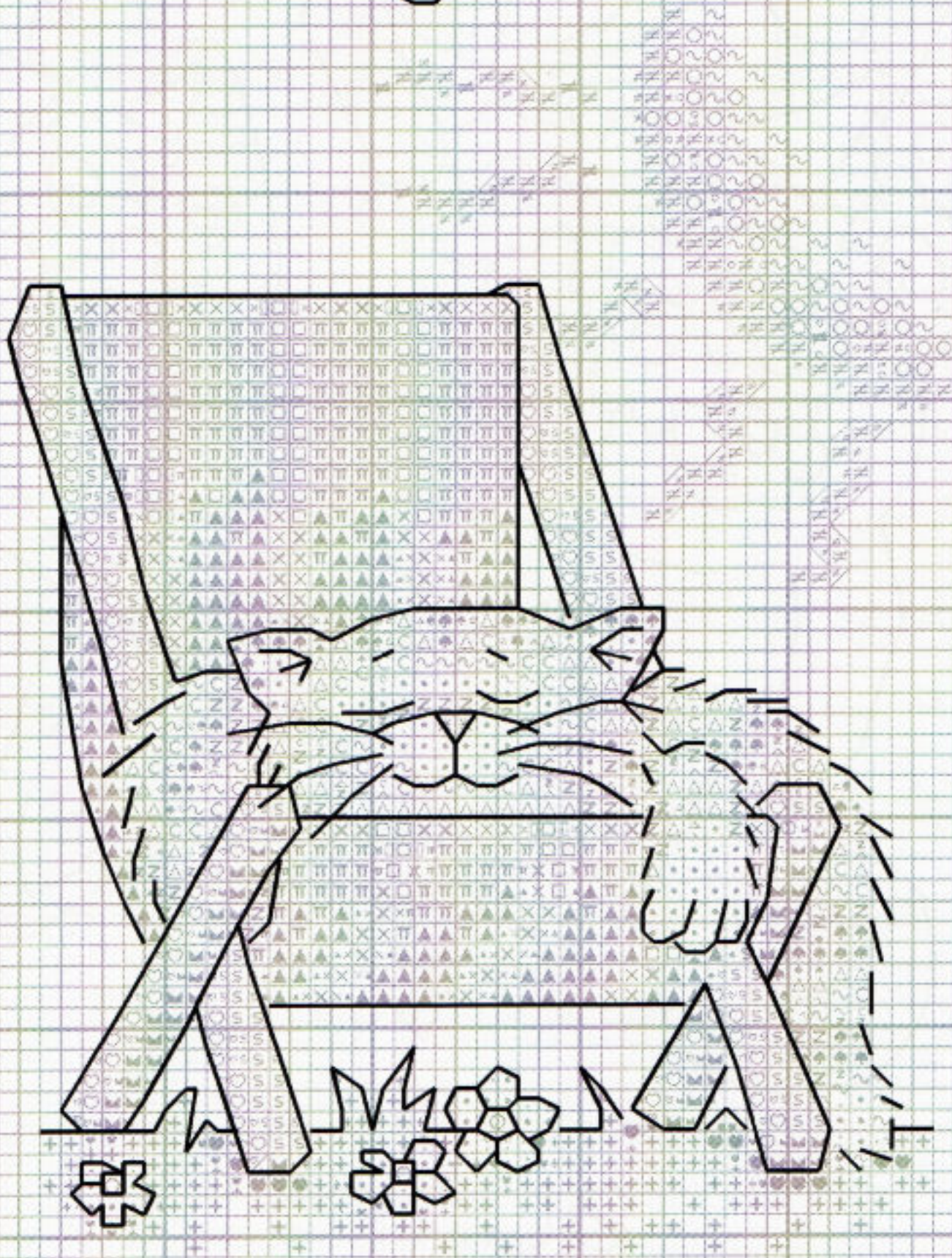
MAY



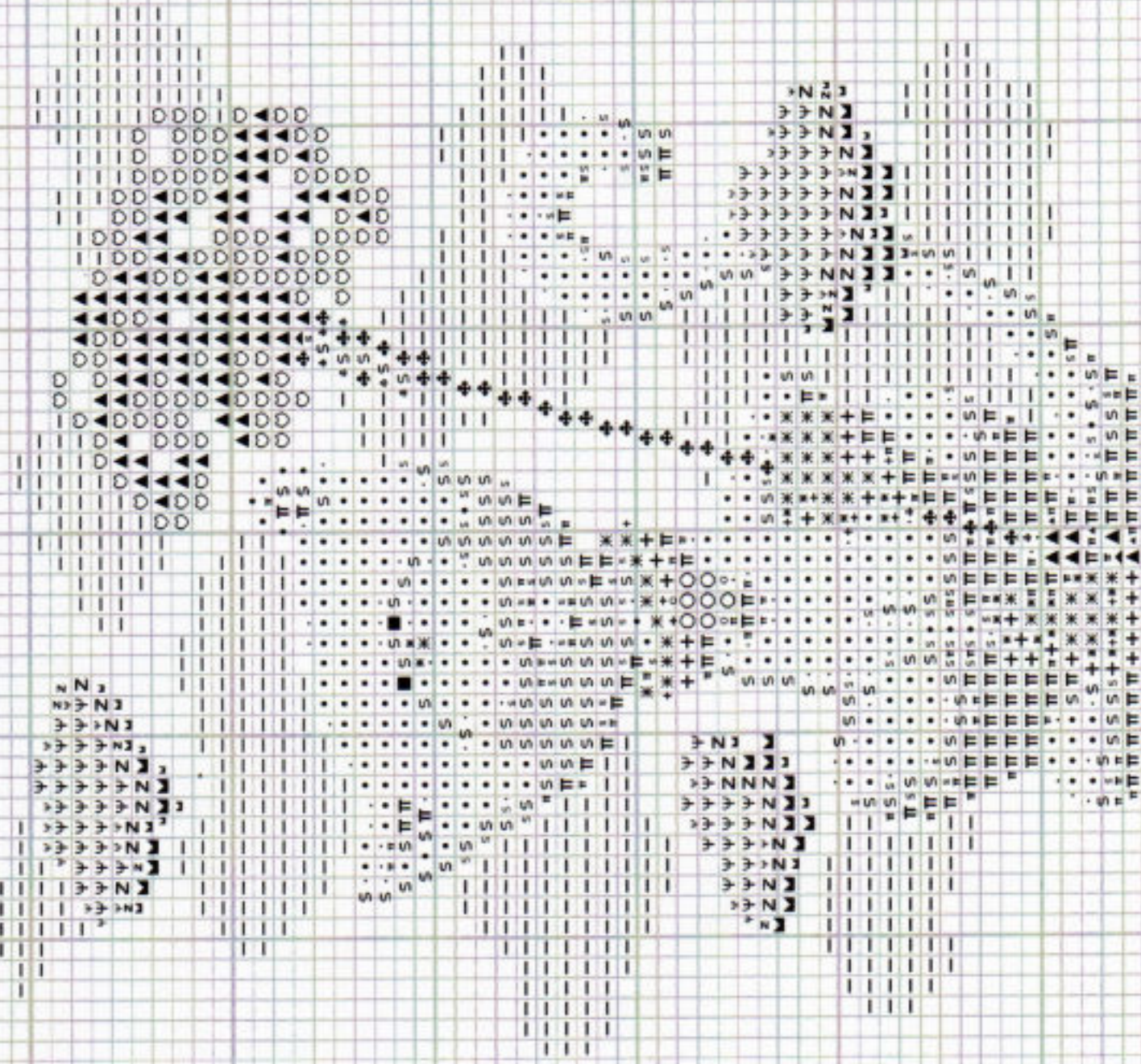
October



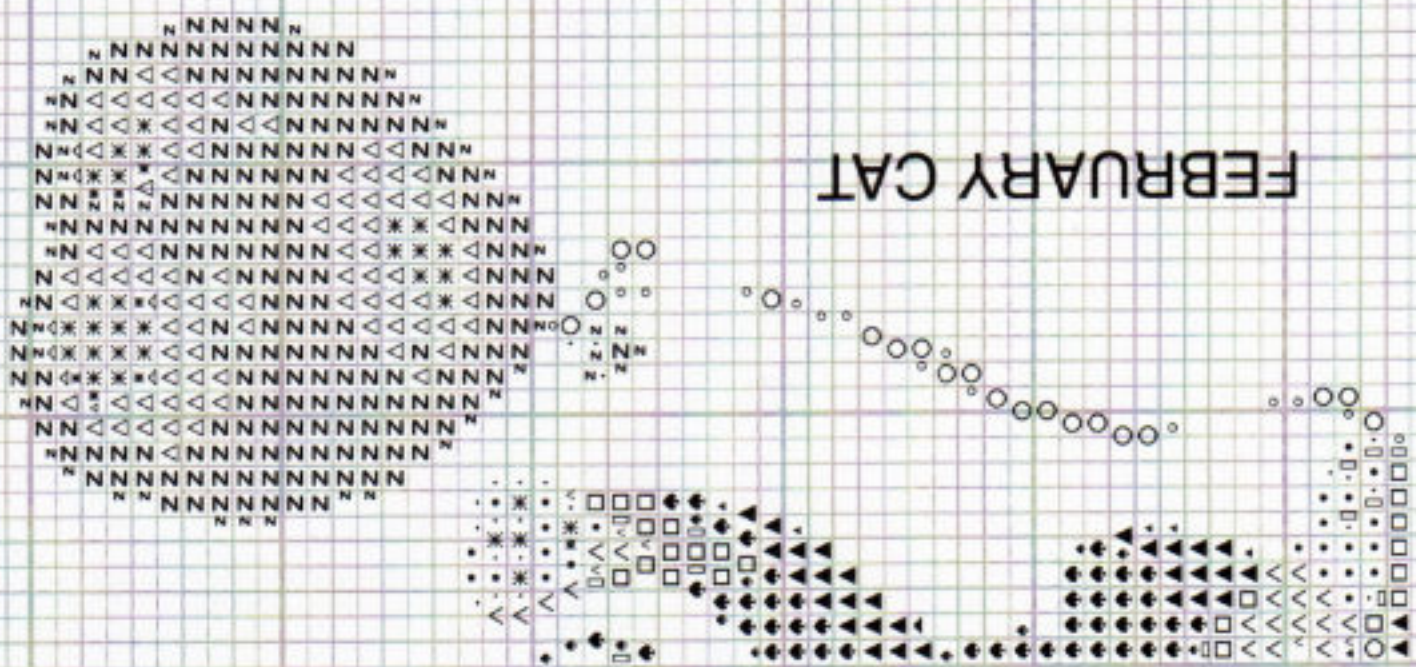
August



MARCH CAT



FEBRUARY CAT



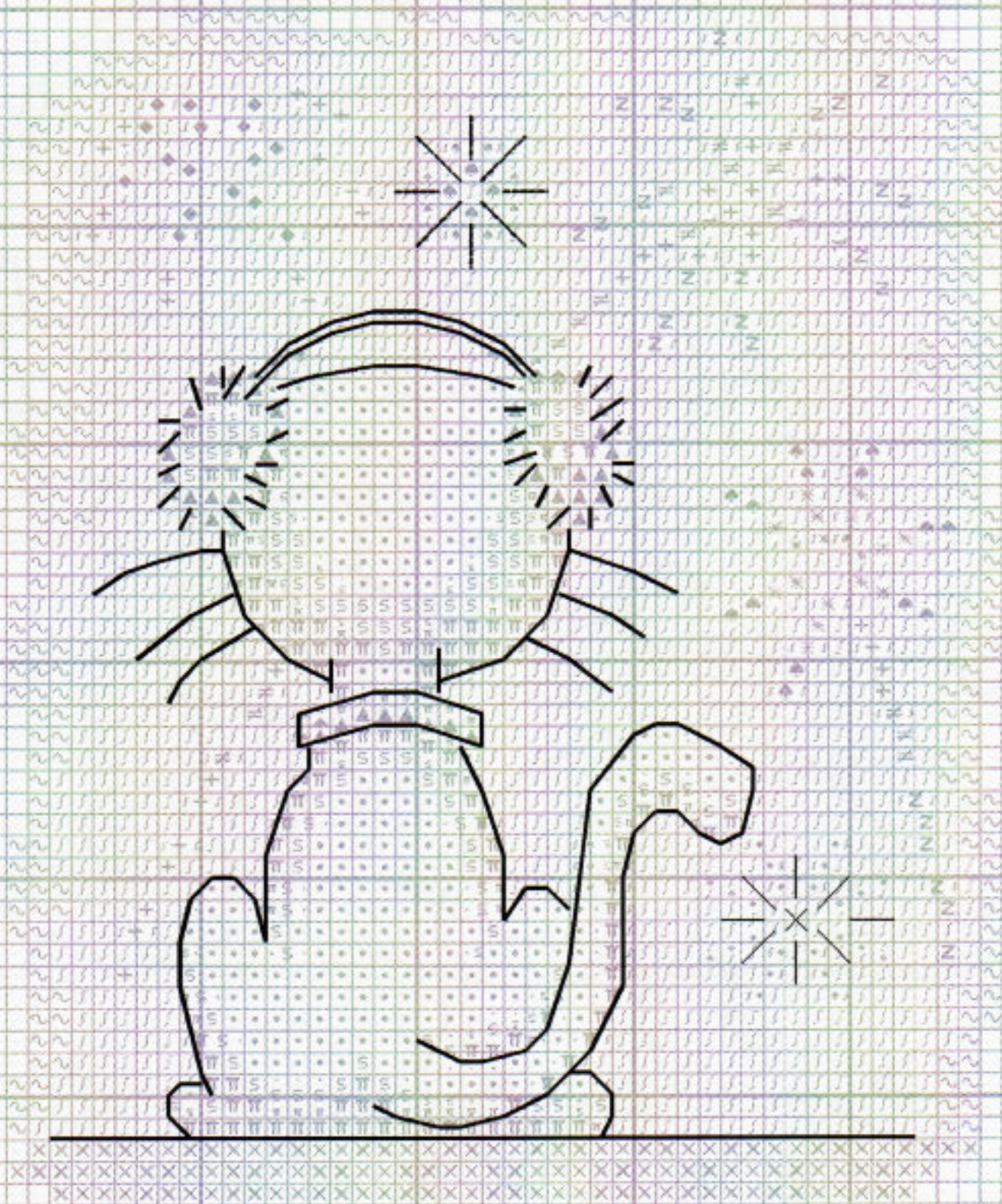
April



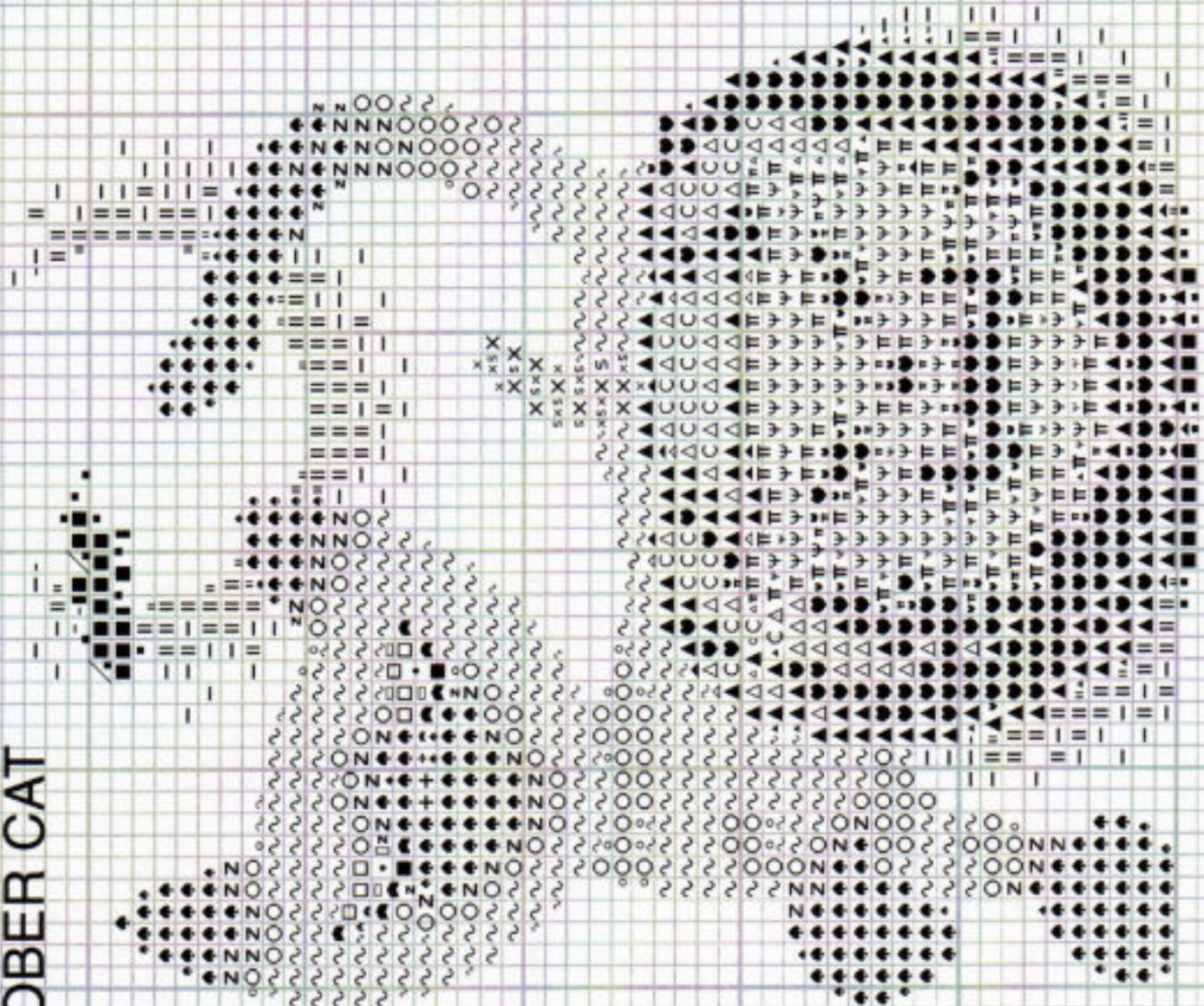
February



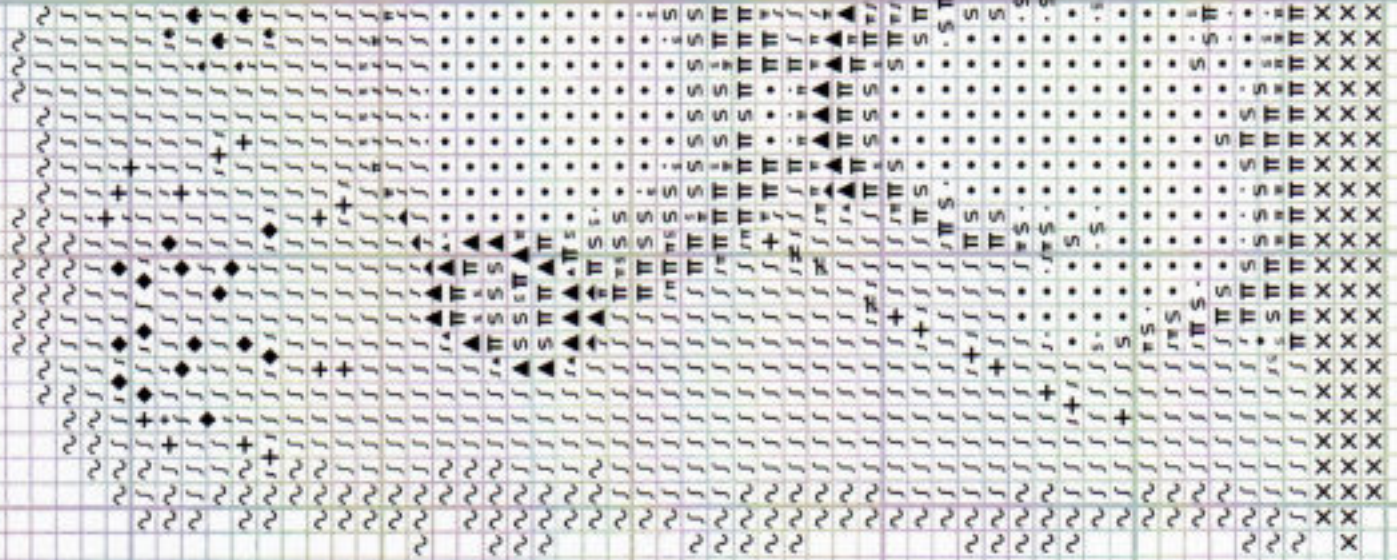
November



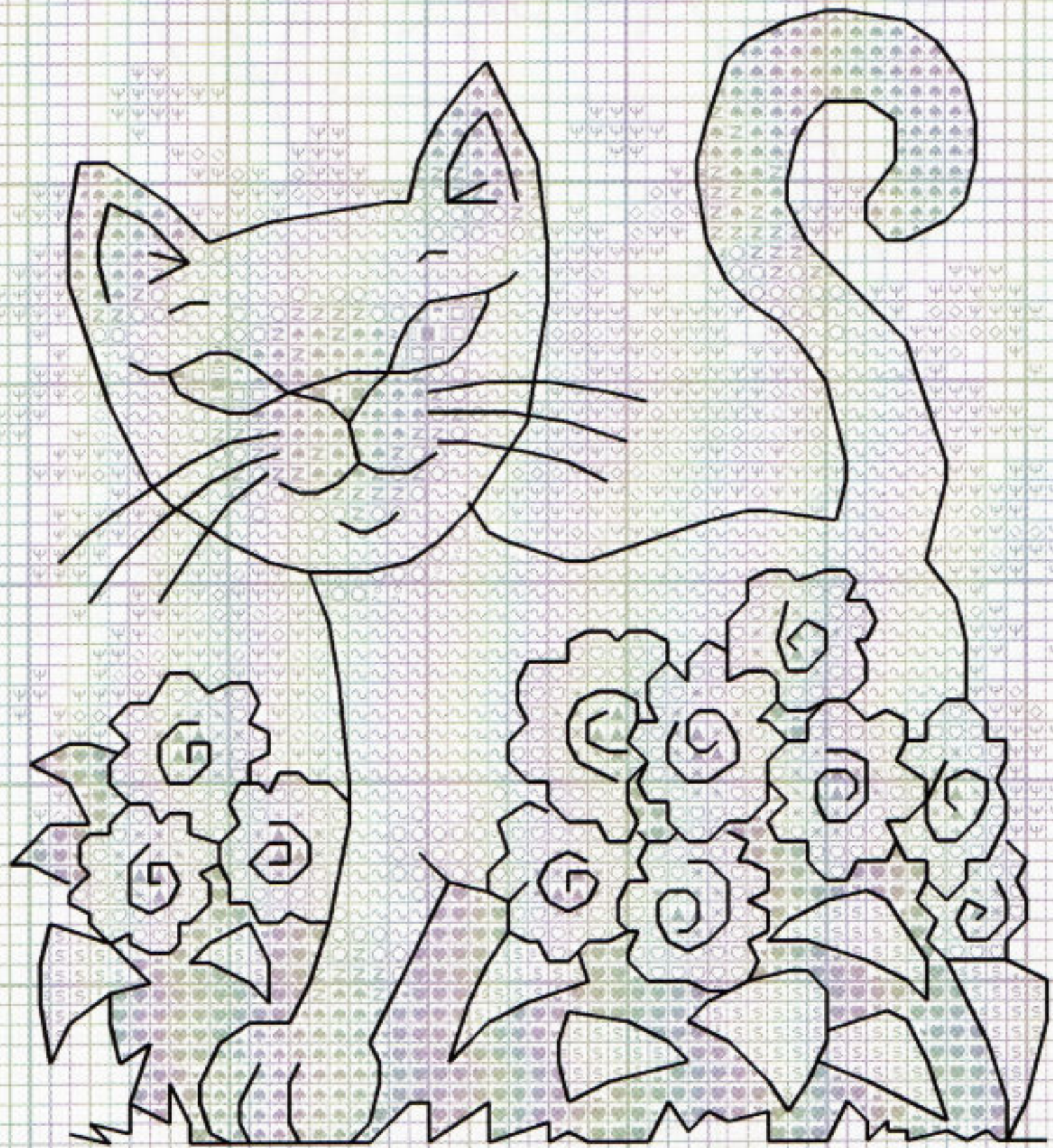
OCTOBER CAT



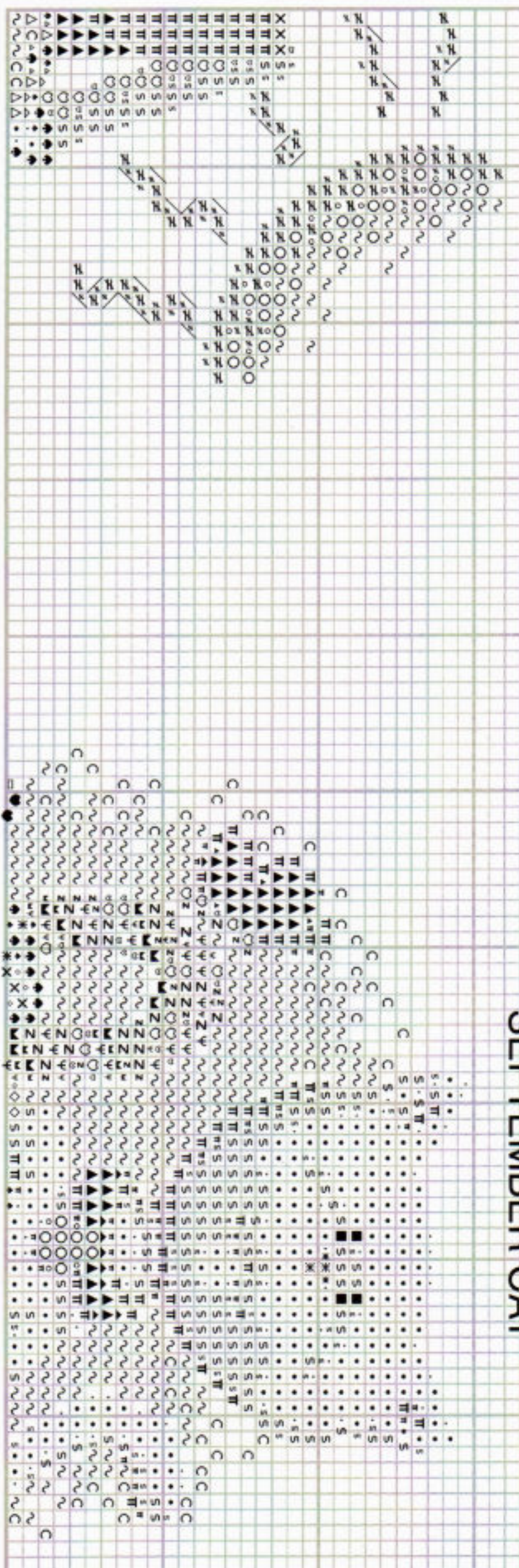
NOVEMBER CAT



June



AUGUST CAT



PLEASE NOTE: Symbols shared between each cat may not represent the same colour.
Please refer to cross stitch key for each individual cat.

SEPTEMBER CAT

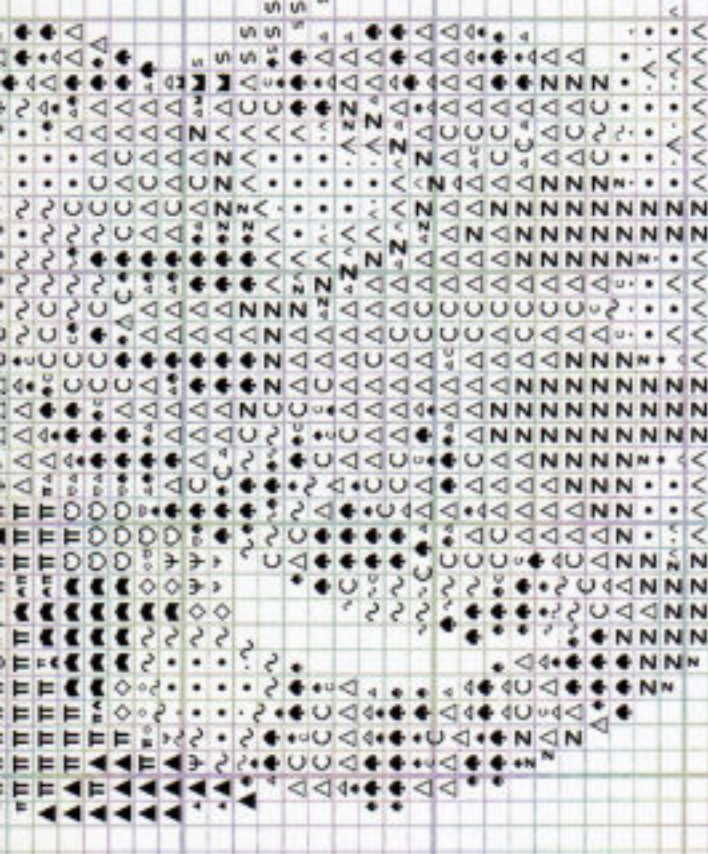
Helpline
If you have any problems or require assistance in working this design, please contact:

Heritage Crafts Ltd.,
Redbrook Lane, Breerton,
Rugeley, Staffs. WS15 1QU.
Phone 01889 575256

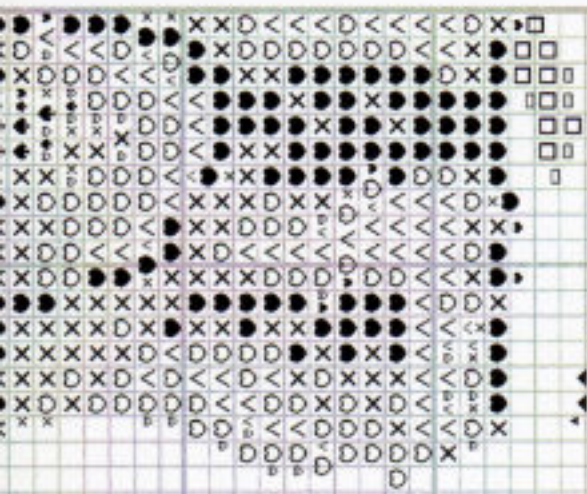


© Heritage Crafts Ltd. 2009

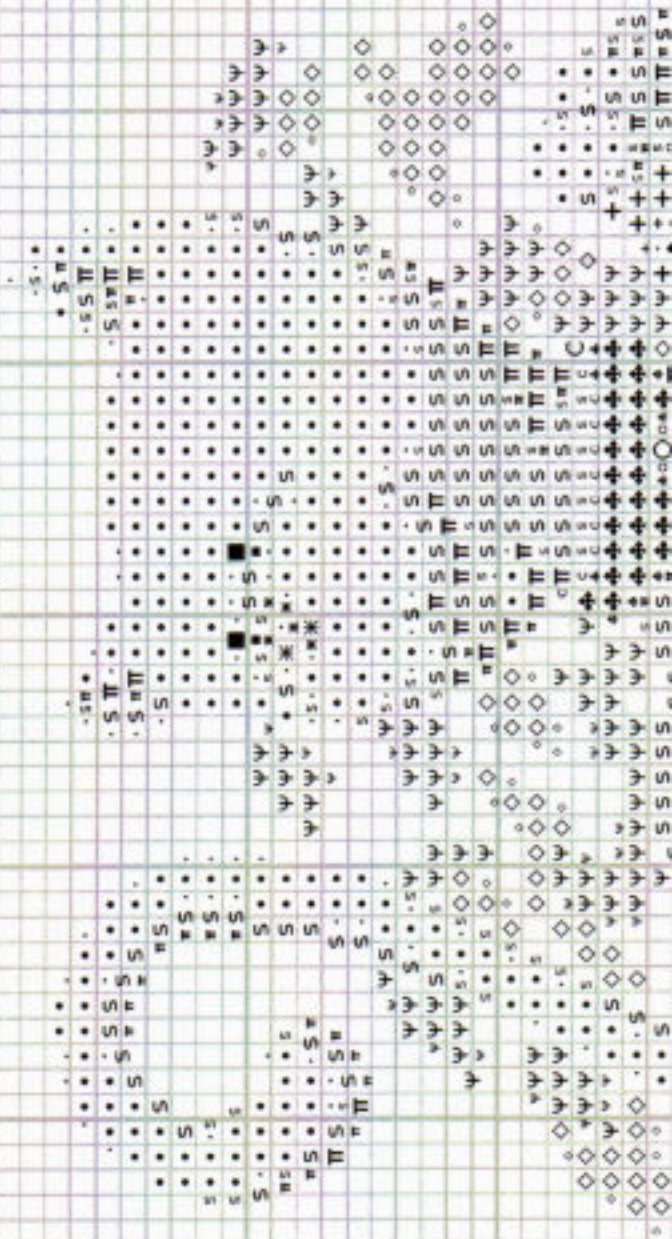
APRIL



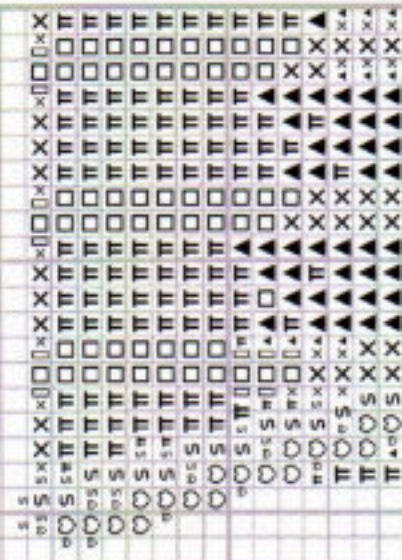
MAY CAT



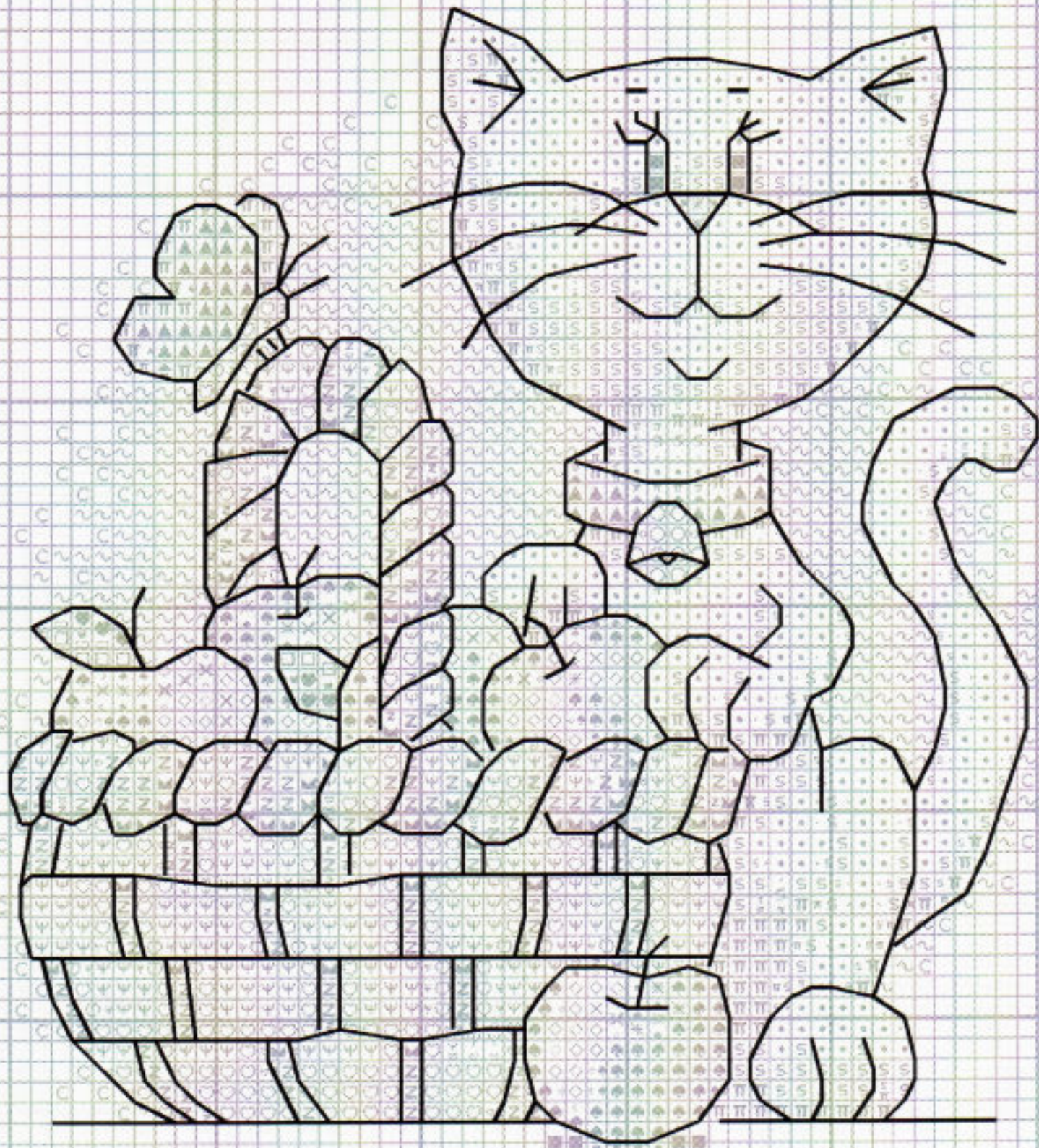
JULY CAT



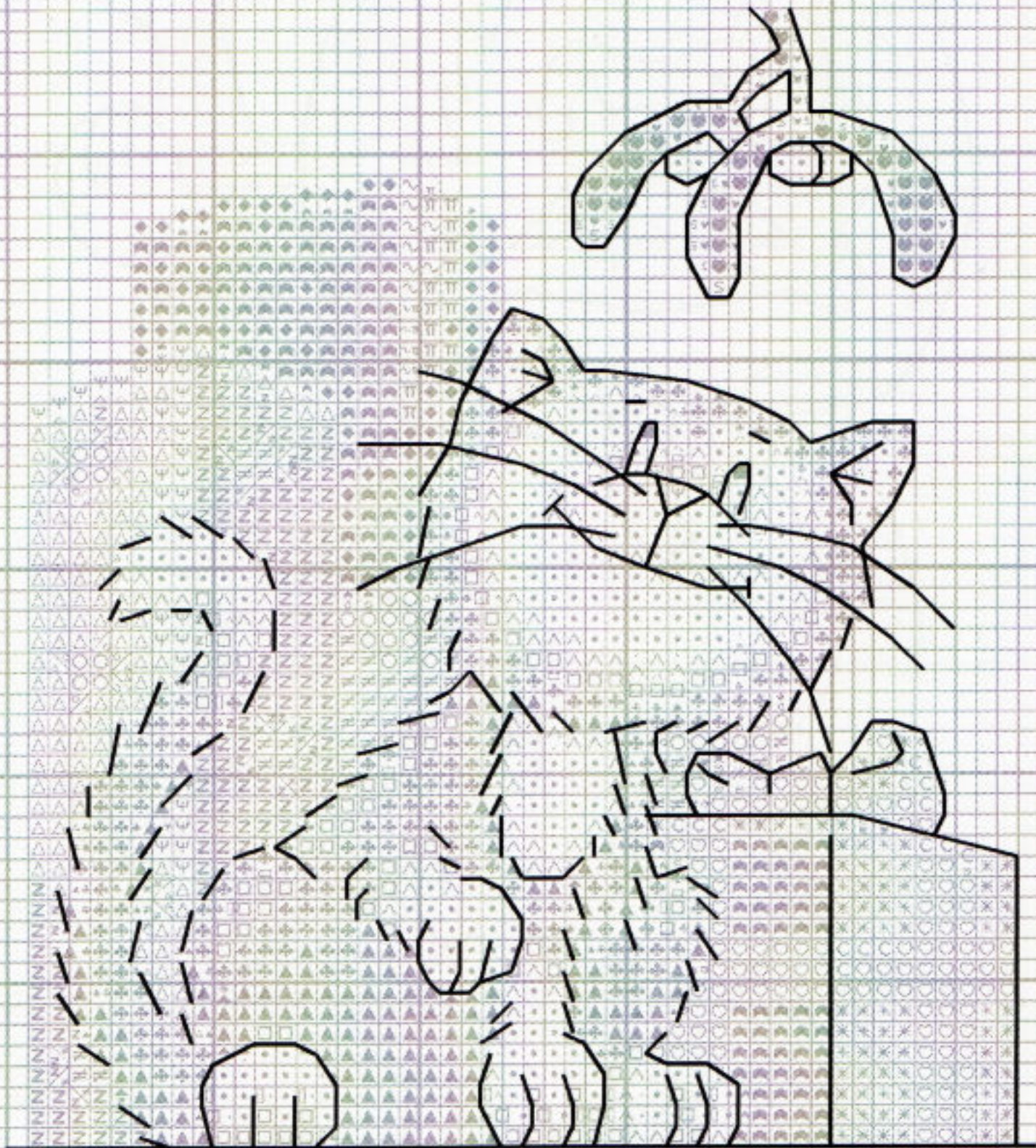
AUGUST CAT



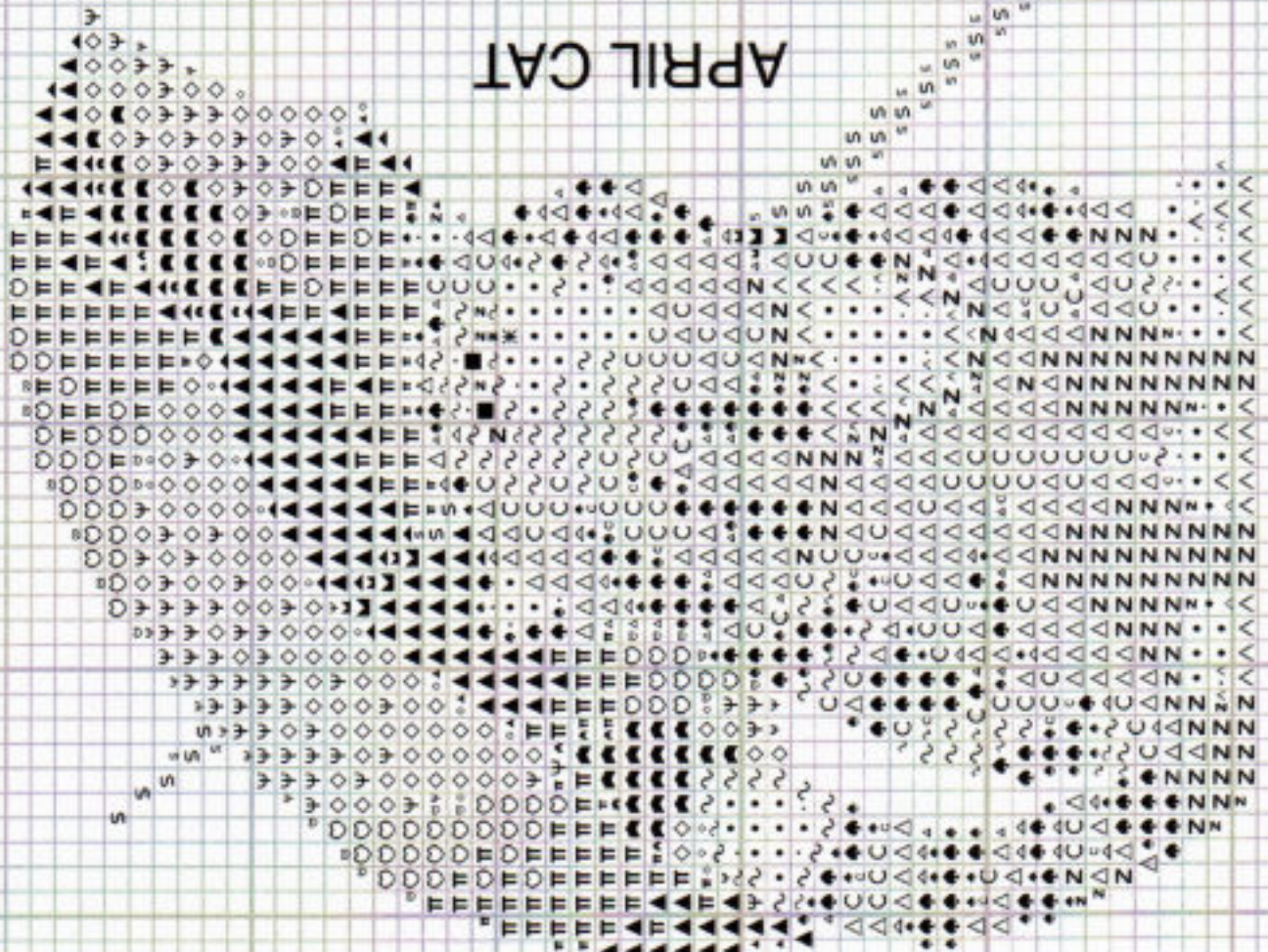
September



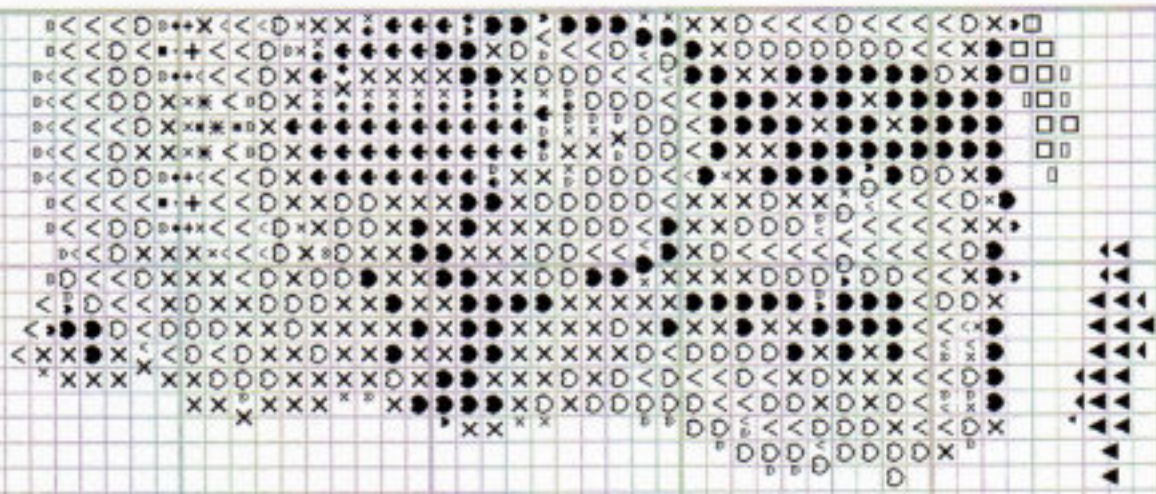
December



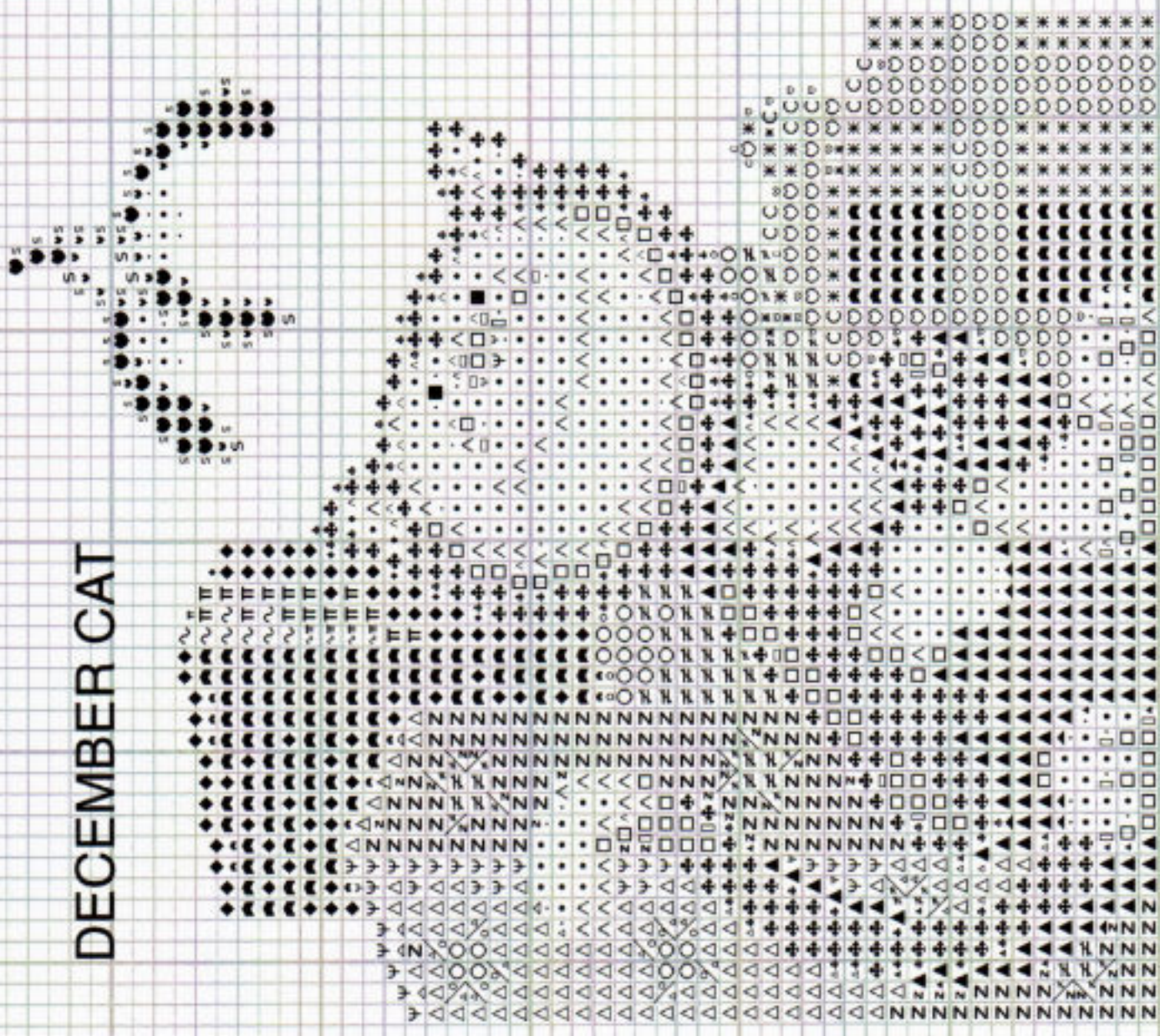
CALENDAR CATS CROSS STITCH SHEET 3



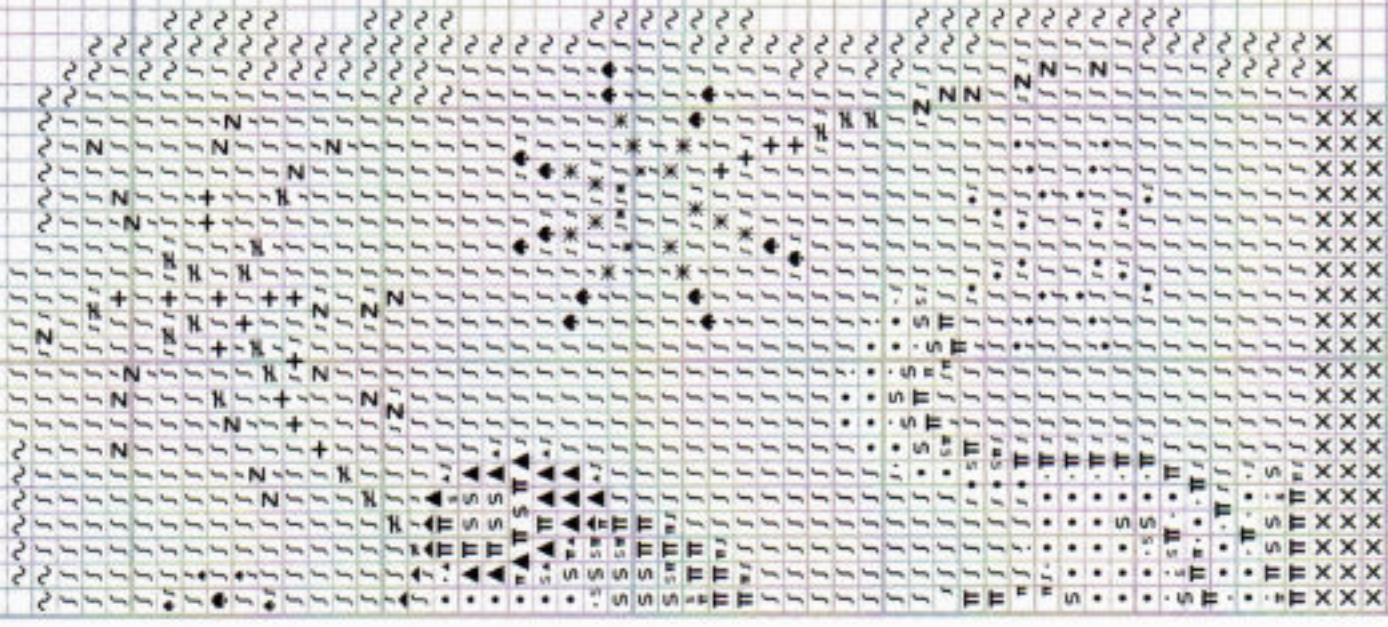
MAY CAT



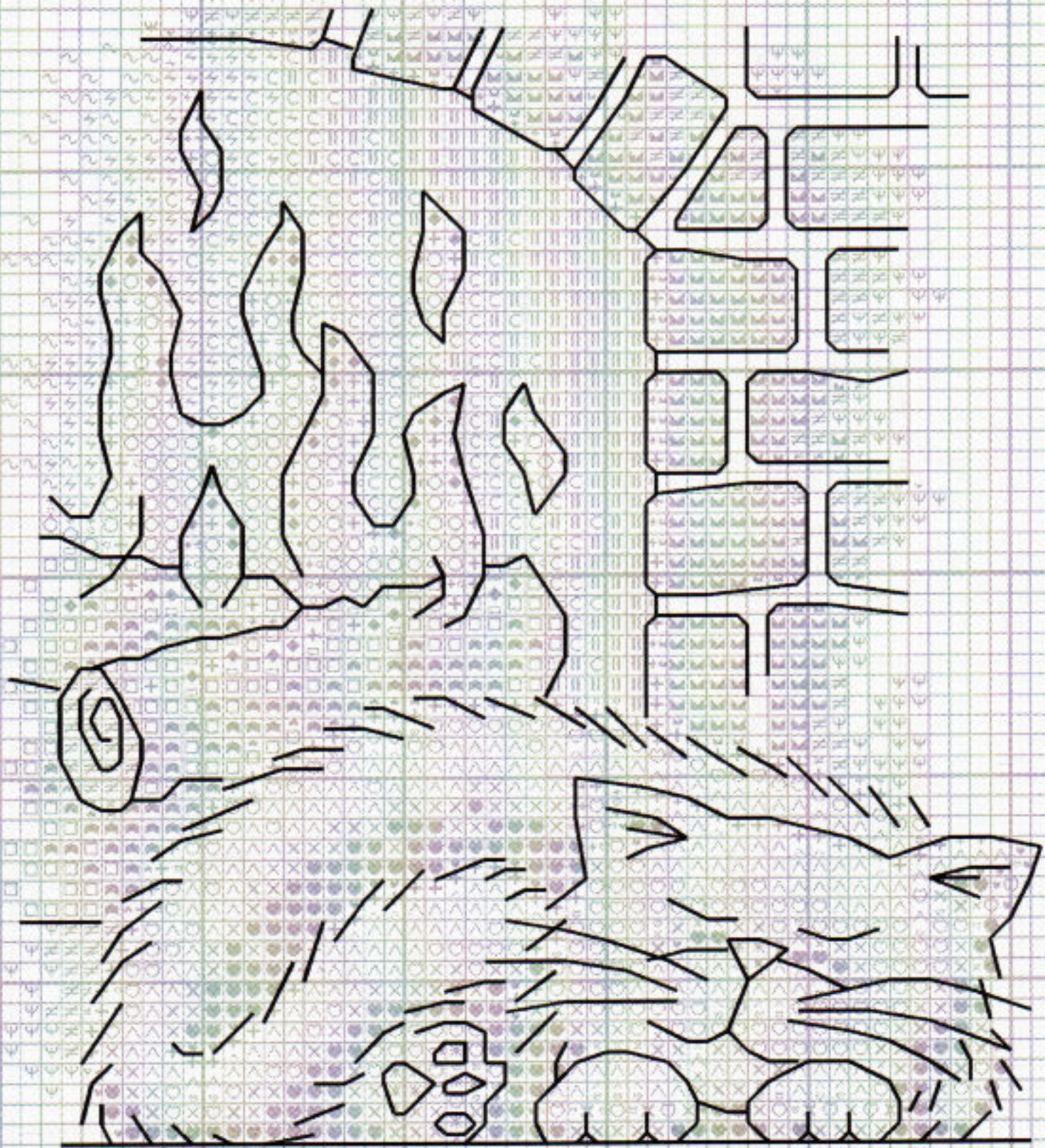
DECEMBER CAT

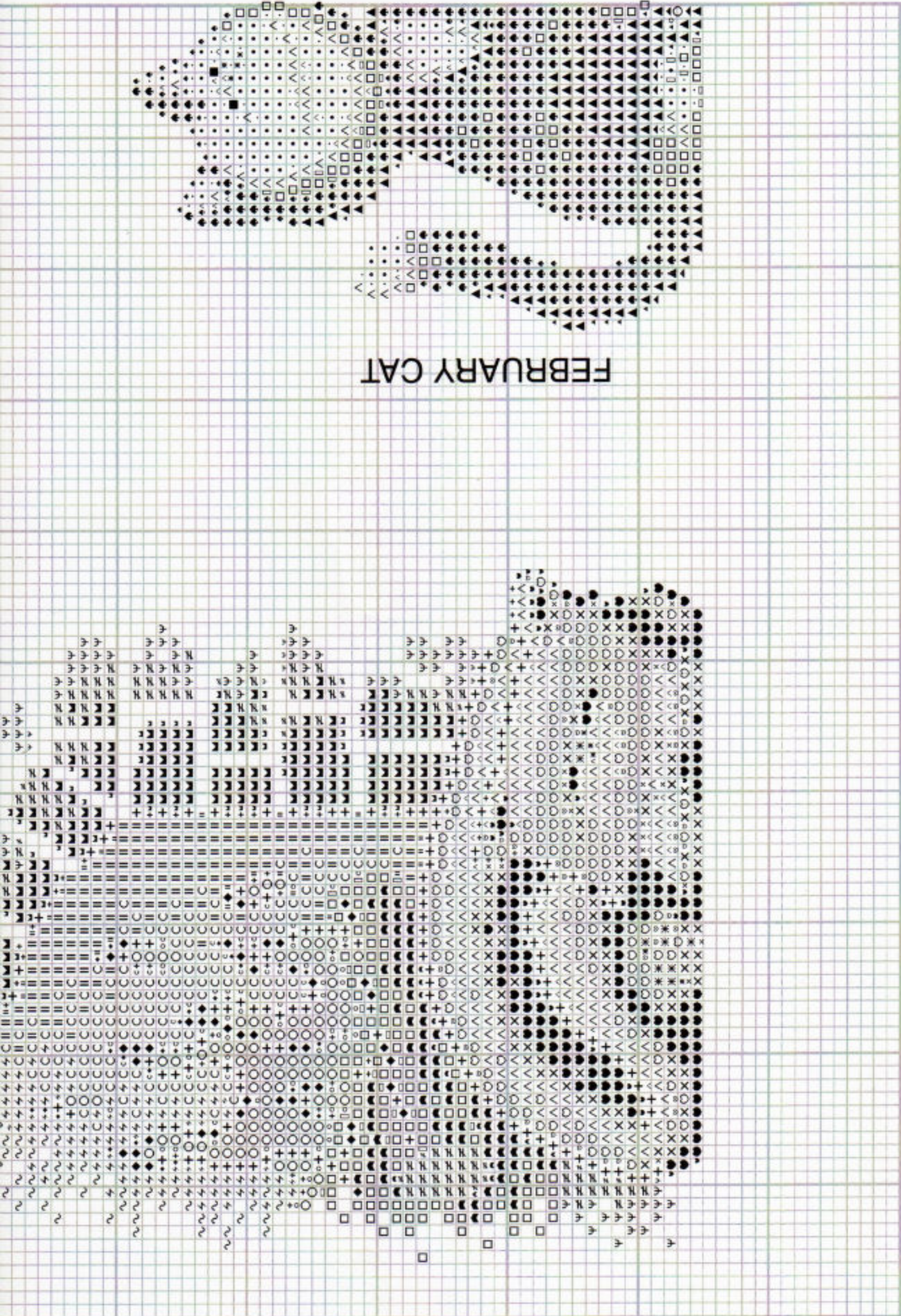


NOVEMBER CAT



January



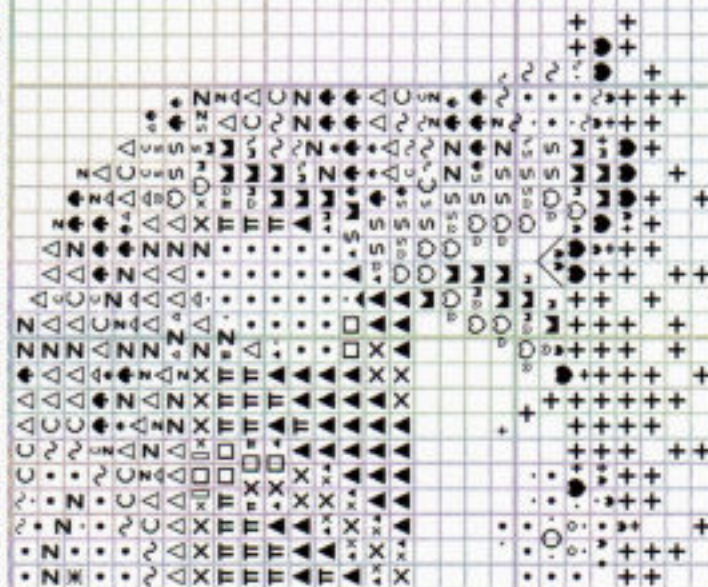


FEBRUARY CAT

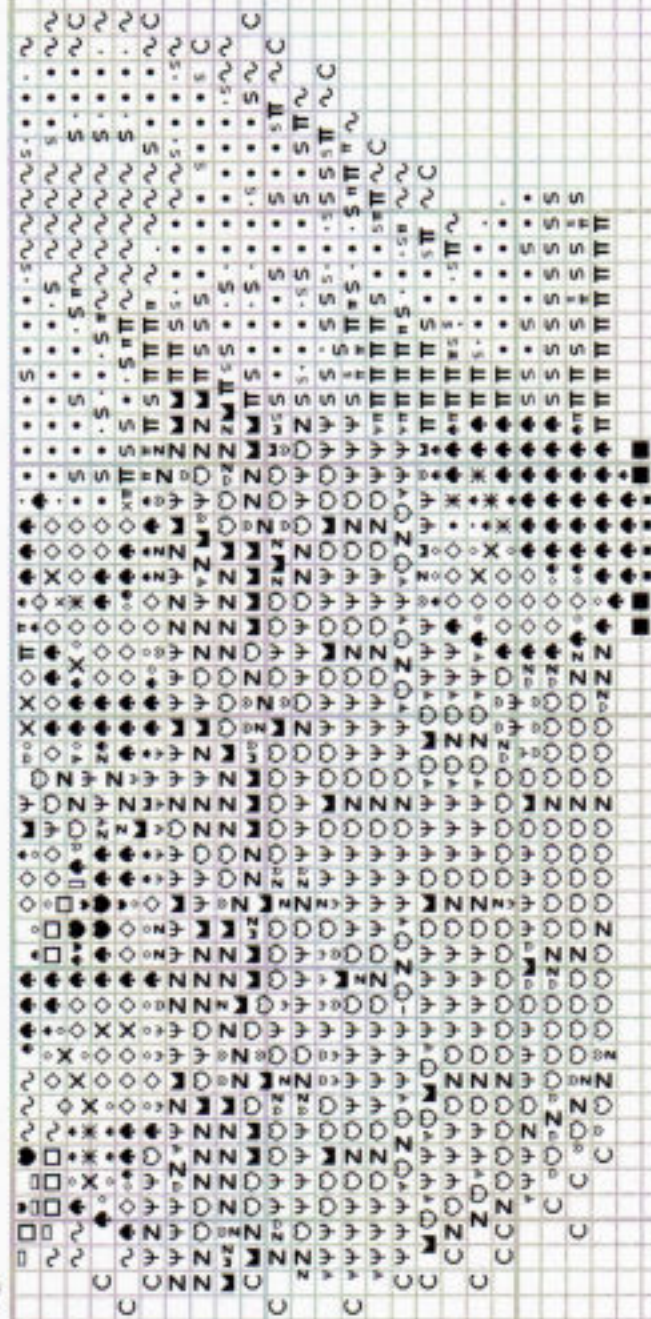
PLEASE NOTE: Symbols shared between each cat may not represent the same colour.
Please refer to cross stitch key for each individual cat

Helpline
If you have any problems or require assistance in working this design,

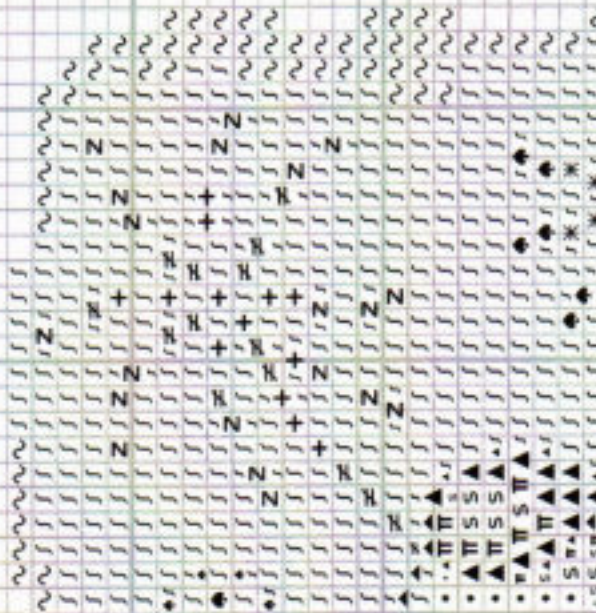
CALENDAR CATS CROSS STITCH SHEET 6



AUGUST CAT



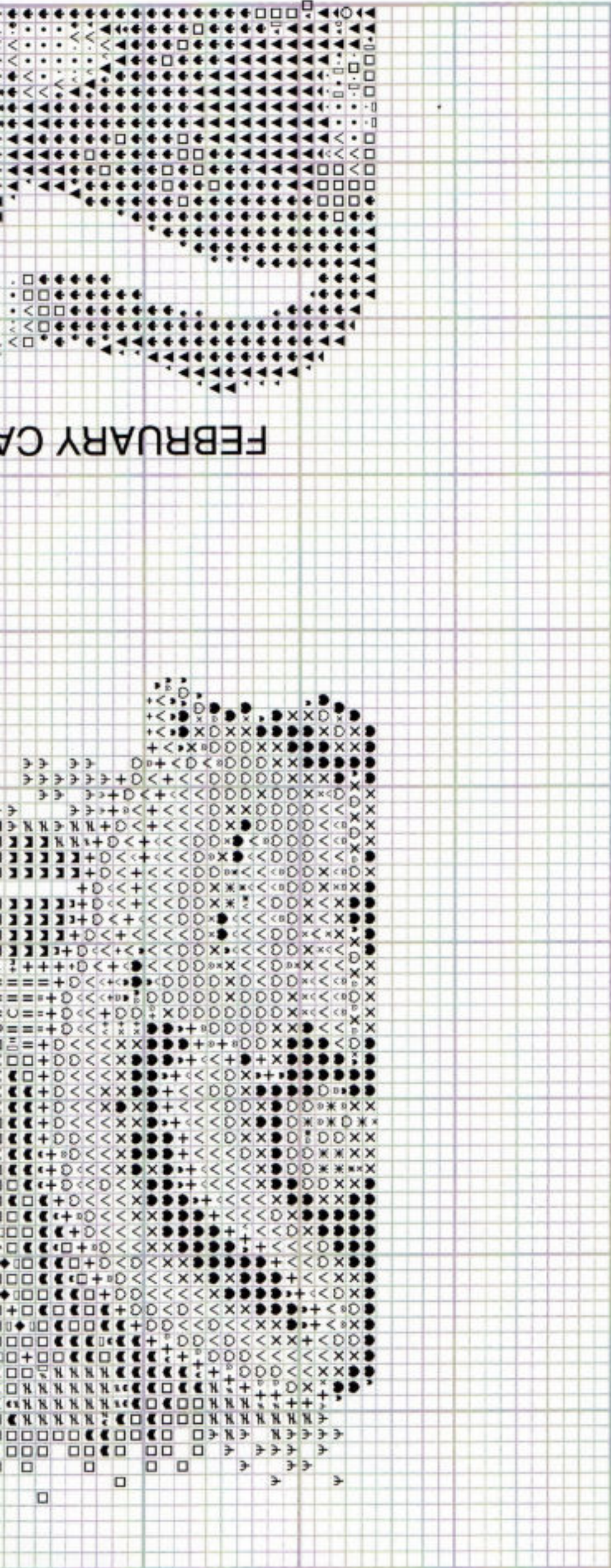
SEPTEMBER CAT



DECEMBER CAT

BER CAT

FEBRUARY CA



PLEASE NOTE: Symbols shared between each cat may not represent the same colour.
 Please refer to cross stitch key for each individual cat

Cross stitch for Calendar Cats Lettering
 ■ 932 (dark blue grey)

Helpline
 If you have any problems or require assistance in working this design, please contact:

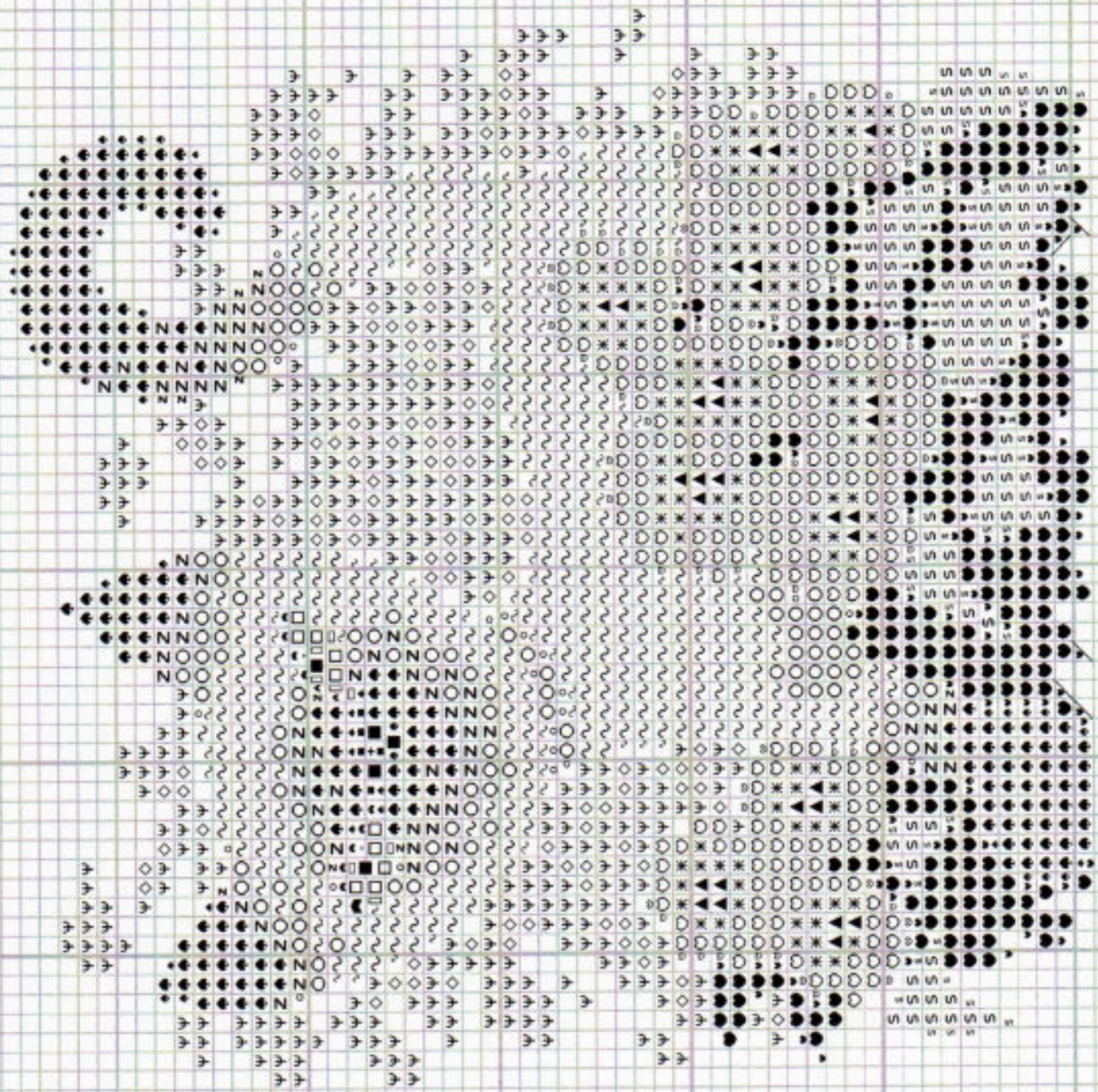
Heritage Crafts Ltd.,
 Redbrook Lane, Brereton,
 Rugeley, Staffs. WS15 1QU.
 Phone 01889 575256



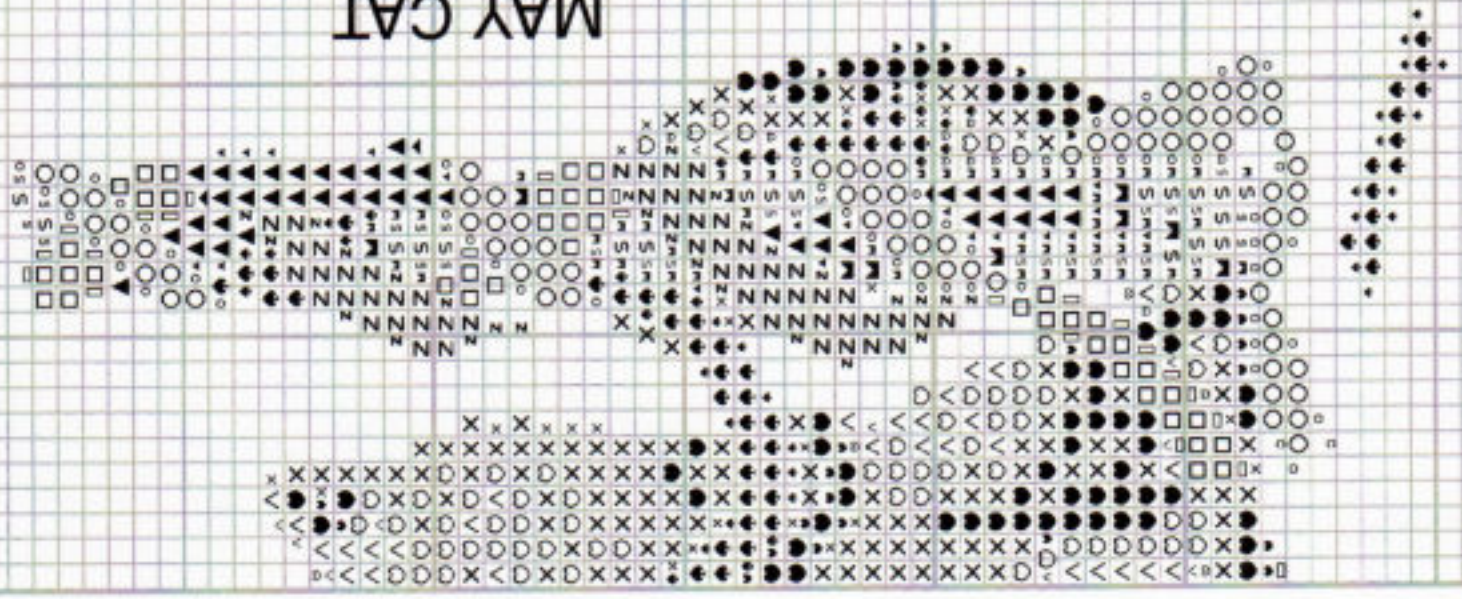
© Heritage Crafts Ltd. 2009

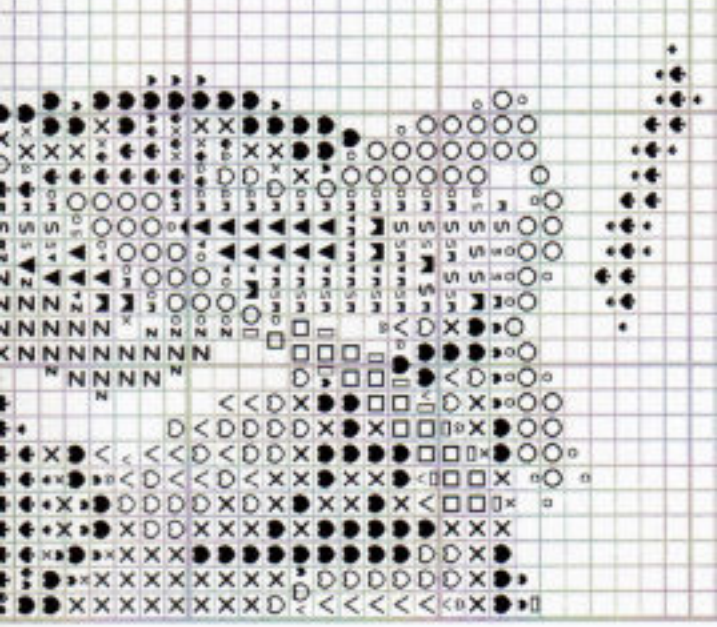
CALENDAR CATS CROSS STITCH SHEET 4

JUNE CAT

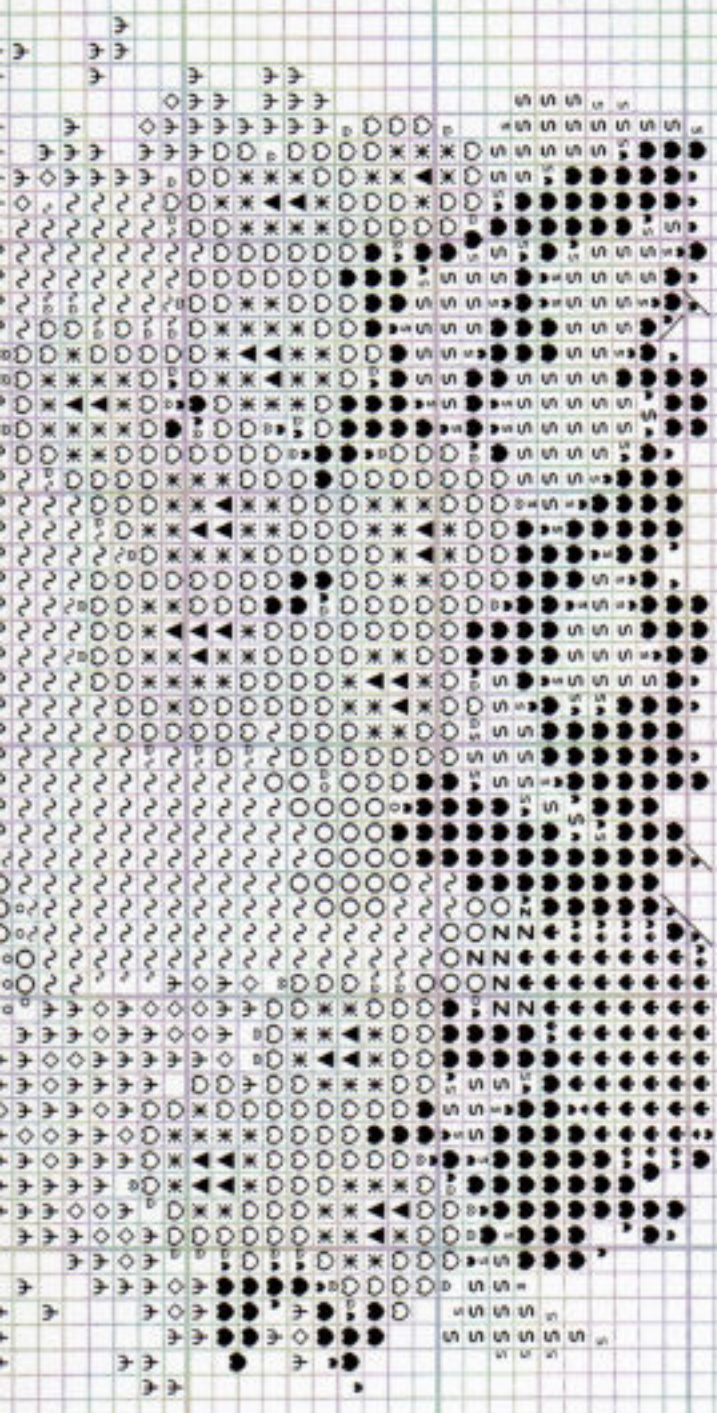
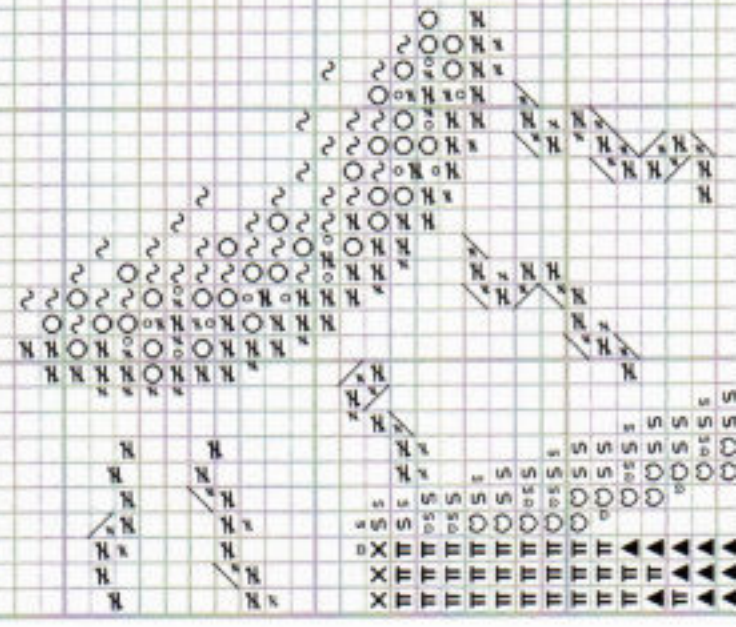


MAY CAT

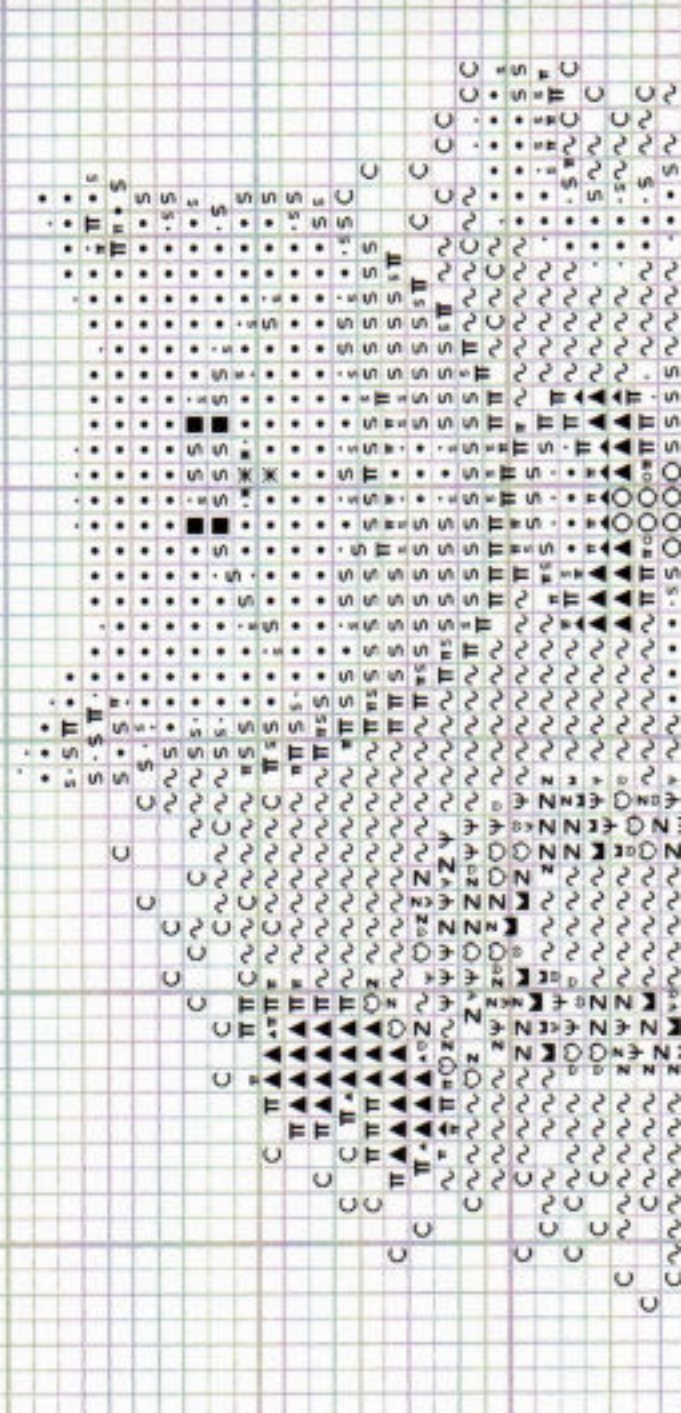




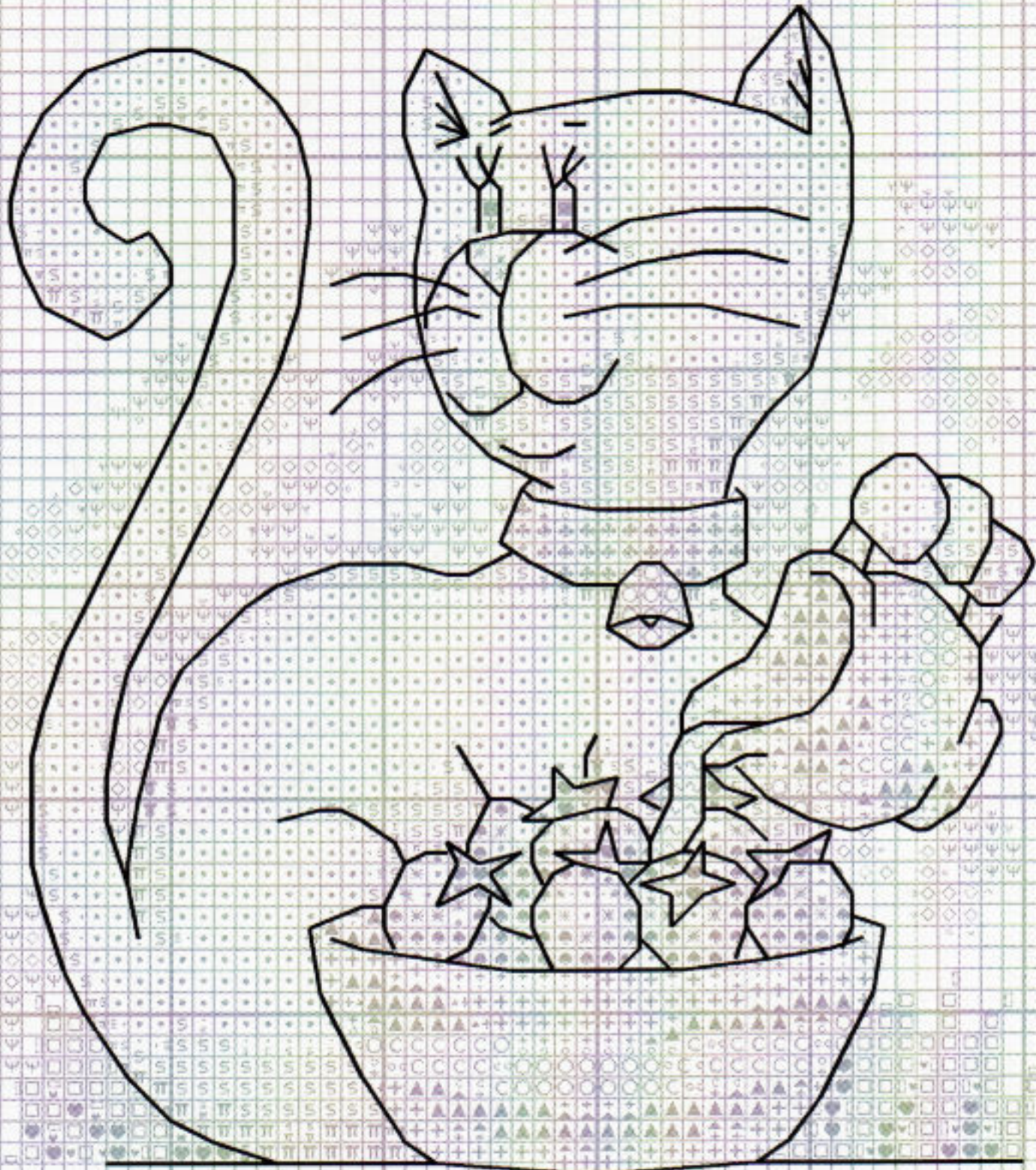
AUGUST CAT



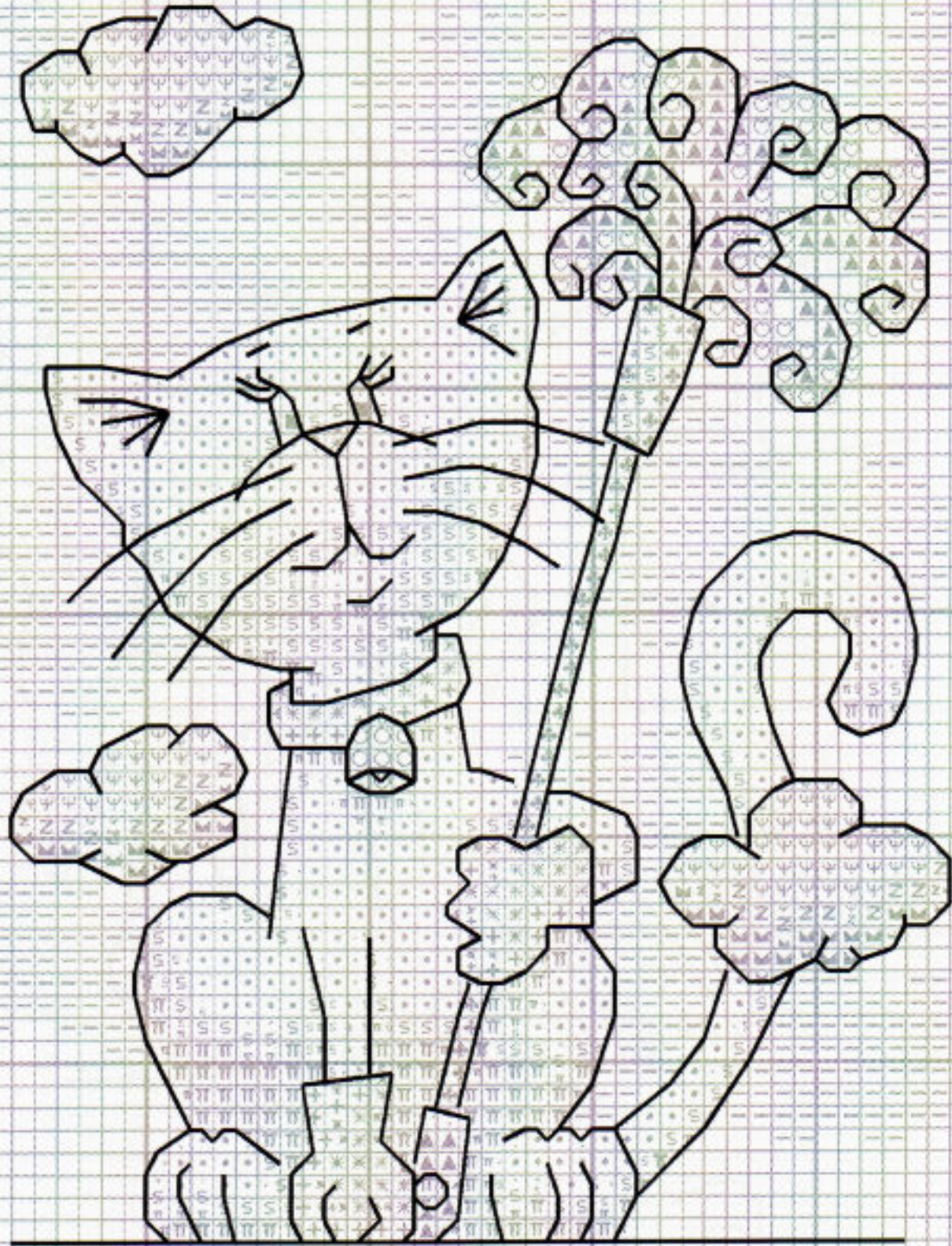
SEPTEMBER CAT



July



March



CALENDAR CATS THREAD COUNT

Thread quantities listed below are for six stranded, 61cm (2ft) lengths of DMC stranded cottons.

DMC	Quantity	DMC	Quantity	DMC	Quantity
156	1	746	3	3608	3
164	6	761	3	3609	4
208	3	762	14	3705	3
209	2	797	2	3716	1
210	2	798	2	3752	3
310	22	799	2	3753	8
317	3	806	2	3765	2
318	3	813	3	3770	3
414	5	826	2	3812	1
415	4	910	2	3816	1
451	2	920	3	3817	3
452	1	922	2	3819	2
453	4	931	5	3821	6
543	5	932	12	3827	6
611	2	959	2	3840	2
612	6	963	1	3843	2
613	4	964	2	3852	2
645	2	976	3	3856	1
648	2	977	2	3862	4
666	7	988	6	3864	2
727	7	996	3	3865	30
741	2	3607	2		

CALENDAR CATS CHART KEY

JULY CAT

Numbers refer to DMC colours.

Cross stitch using two strands of one colour.

- 164 (light spring green)
- 310 (black)
- ◆ 666 (bright red)
- 727 (yellow)
- ◊ 746 (cream)
- * 761 (very light pink)
- S 762 (very light grey)
- + 813 (light china blue)
- ▲ 826 (medium china blue)
- ♣ 976 (very dark apricot)
- ♥ 988 (medium spring green)
- π 3753 (light blue grey)
- C 3827 (medium apricot)
- 3865 (soft white)

Cross stitch using one strand of each of two colours.

- ◇ 164 (light spring green)
- ψ 3817 (light grey green)

Outlining working in backstitch and long stitches, using one strand of one colour, unless stated otherwise.

- 310 (black)

AUGUST CAT

Numbers refer to DMC colours.

Cross stitch using two strands of one colour.

- + 164 (light spring green)
- S 453 (light mushroom)
- ▼ 611 (dark fawn)
- 612 (medium fawn)
- 727 (yellow)
- * 761 (pink)
- π 806 (dark turquoise)
- ◆ 976 (very dark apricot)
- ♥ 988 (medium spring green)
- 996 (light turquoise)
- ▲ 3765 (very dark turquoise)
- ~ 3770 (very light apricot)
- ✂ 3821 (gold)
- △ 3827 (medium apricot)
- X 3843 (medium turquoise)
- 3865 (soft white)

Cross stitch using one strand of each of two colours.

- Z 977 (dark apricot) and 3827 (medium apricot)
- C 3770 (very light apricot) and 3856 (light apricot)

Fine diagonal lines on this cat indicate diagonal half stitches. See sheet outlining key for outline detail.

Outlining working in backstitch and long stitches, using one strand of one colour, unless stated otherwise.

- 310 (black)

SEPTEMBER CAT

Numbers refer to DMC colours.

Cross stitch using two strands of one colour.

- 164 (light spring green)
- 310 (black)
- ▼ 611 (dark fawn)
- Z 612 (medium fawn)
- 613 (light fawn)
- ◆ 666 (bright red)
- 727 (yellow)
- ψ 746 (cream)
- * 761 (pink)
- S 762 (very light grey)
- ▲ 826 (medium china blue)
- ♥ 988 (medium spring green)
- π 3753 (light blue grey)
- ◇ 3819 (apple green)
- 3865 (soft white)

Cross stitch using one strand of each of two colours.

- X 3819 (apple green) and 3865 (soft white)

Cross stitch using one strand of one colour.

- C 727 (yellow)
- ~ 3821 (gold)

Outlining working in backstitch and long stitches, using one strand of one colour, unless stated otherwise.

- 310 (black)

CALENDAR CATS CHART KEY

JANUARY CAT

Numbers refer to DMC colours.

Cross stitch using two strands of one colour.

- 612 (medium fawn)
- ▲ 613 (dark fawn)
- ◆ 645 (dark grey brown)
- 648 (light grey brown)
- 727 (yellow)
- * 761 (pink)
- △ 762 (very light grey)
- ♥ 932 (dark blue grey)
- + 3821 (medium gold)
- ◆ 3852 (dark gold)

Cross stitch using one strand of one each of two colours.

- X 318 (medium grey) & 3752 (medium blue grey)
- ∩ 415 (light grey) & 3753 (light blue grey)

Cross stitch using one strand of one colour.

- ψ 453 (light mushroom)
- || 797 (dark blue)
- C 798 (medium blue)
- ↗ 799 (light blue)
- ~ 3840 (very light blue)

Outlining working in backstitch and long stitches using one strand of one colour, unless stated otherwise.

- 310 (black)

FEBRUARY CAT

Numbers refer to DMC colours.

Cross stitch using two strands of one colour.

- 310 (black)
- ▲ 317 (very dark grey)
- ◆ 414 (dark grey)
- 415 (light grey)
- Z 666 (bright red)
- 727 (yellow)
- * 761 (pink)
- △ 762 (very light grey)
- △ 3705 (medium red)
- 3865 (soft white)

Outlining working in backstitch and long stitches, using one strand of one colour, unless stated otherwise.

- 310 (black)

MARCH CAT

Numbers refer to DMC colours.

Cross stitch using two strands of one colour.

- ◆ 156 (medium blue)
- ▲ 208 (dark purple)
- ∩ 210 (light purple)
- 310 (black)
- ▼ 451 (dark mushroom)
- Z 452 (medium mushroom)
- ψ 453 (light mushroom)
- 727 (yellow)
- S 762 (very light grey)
- * 963 (light candy pink)
- + 3716 (medium candy pink)
- π 3753 (light blue grey)
- 3865 (soft white)

Diagonal stitches using one strand of one colour. Work as single diagonal stitches, keeping them all in the same direction.

- 453 (light mushroom)

Outlining working in backstitch and long stitches, using one strand of one colour, unless stated otherwise.

- 310 (black)

OCTOBER CAT

Numbers refer to DMC colours.

Cross stitch using two strands of one colour.

- S 164 (light spring green)
- 310 (black)
- + 318 (medium grey)
- 543 (golden fawn)
- ψ 727 (yellow)
- ♥ 920 (dark copper red)
- ▲ 922 (medium copper red)
- X 988 (medium spring green)
- 996 (light turquoise)
- C 3770 (very light apricot)
- △ 3827 (medium apricot)
- ▲ 3843 (medium turquoise)
- TT 3852 (dark gold)
- ◆ 3862 (medium brown)
- Z 3864 (light brown)
- 3865 (soft white)

Cross stitch using one strand of each of two colours.
~ 543 (golden fawn) and 3865 (soft white)

Cross stitch using one strand of one colour.
|| 797 (dark blue)
- 798 (medium blue)

Outlining working in backstitch and long stitches, using one strand of one colour, unless stated otherwise.

_____ 310 (black)

NOVEMBER CAT

Numbers refer to DMC colours.

Cross stitch using two strands of one colour.

- ◆ 666 (bright red)
- + 727 (yellow)
- Z 741 (orange)
- S 762 (very light grey)
- ▲ 813 (light china blue)
- X 988 (medium spring green)
- ◆ 996 (light turquoise)
- * 3716 (medium candy pink)
- TT 3753 (light blue grey)
- z 3821 (gold)
- 3865 (soft white)

Cross stitch using one strand of one colour.

J 931 (very dark blue grey)
~ 932 (dark blue grey)

Outlining working in backstitch and long stitches, using one strand of one colour, unless stated otherwise.

_____ 310 (black)

..... 727 (yellow)

_____ 3865 (soft white)

DECEMBER CAT

Numbers refer to DMC colours.

Cross stitch using two strands of one colour.

- S 164 (light spring green)
- 310 (black)
- ▲ 317 (very dark grey)
- ♣ 414 (dark grey)
- 415 (light grey)
- Z 666 (bright red)
- 727 (yellow)
- ψ 761 (very light pink)
- Λ 762 (very light grey)
- ◆ 799 (light blue)
- ♥ 988 (medium spring green)
- ψ 3607 (dark pink)
- C 3608 (medium pink)
- * 3609 (light pink)
- △ 3705 (medium red)
- z 3821 (gold)

TT 3840 (very light blue)
• 3865 (soft white)

Cross stitch using one strand of each of two colours.
▲ 799 (light blue) and 3608 (medium pink)
~ 3840 (very light blue) and 3865 (soft white)

Fine diagonal lines on this cat indicate diagonal half stitches. See below key for outline detail.

Outlining working in backstitch and long stitches, using one strand of one colour, unless stated otherwise.

_____ 310 (black)

Helpline

If you have any problems or require assistance in working this design, please contact:

Heritage Crafts Ltd., Redbrook Lane,
Brereton, Rugeley, Staffs. WS15 1QU.
Phone: 01889 575256.

HERITAGE
Crafts

© Copyright 2009

APRIL CAT

Numbers refer to DMC colours.

Cross stitch using two strands of one colour.

- ▲ 208 (dark purple)
- ▱ 209 (medium purple)
- ♡ 210 (light purple)
- 310 (black)
- S 612 (medium fawn)
- ▼ 645 (dark grey brown)
- * 761 (pink)
- ^ 762 (very light grey)
- ◇ 959 (medium emerald)
- ♣ 964 (light emerald)
- ♣ 976 (very dark apricot)
- ~ 3770 (very light apricot)
- ^ 3812 (dark emerald)
- + 3821 (medium gold)
- △ 3827 (medium apricot)
- 3865 (soft white)

Cross stitch using one strand of each of two colours.

- Z 977 (dark apricot) and 3827 (medium apricot)
- C 3770 (very light apricot) and 3856 (light apricot)

Outlining working in backstitch and long stitches, using one strand of one colour, unless stated otherwise.

- 310 (black)

Raindrops

- | 932 (dark blue grey)

MAY CAT

Numbers refer to DMC colours.

Cross stitch using two strands of one colour.

- 310 (black)
- S 612 (medium fawn)
- ▼ 645 (dark grey brown)
- ♣ 666 (bright red)
- 727 (yellow)
- Z 741 (orange)
- * 761 (pink)
- ^ 762 (very light grey)
- ▲ 910 (green)
- ♥ 932 (dark blue grey)
- 996 (turquoise blue)
- + 3821 (medium gold)
- ◆ 3852 (dark gold)
- 3865 (soft white)

Cross stitch using one strand of each of two colours.

- X 318 (medium grey) and 3752 (medium blue grey)
- ♡ 415 (light grey) and 3753 (light blue grey)

Outlining working in backstitch and long stitches, using one strand of one colour, unless stated otherwise.

- 310 (black)

JUNE CAT

Numbers refer to DMC colours.

Cross stitch using two strands of one colour.

- S 164 (light spring green)
- 310 (black)
- + 318 (medium grey)
- 543 (golden fawn)
- ♥ 988 (medium spring green)
- 996 (light turquoise)
- ▲ 3607 (dark pink)
- * 3608 (medium pink)
- ♡ 3609 (light pink)
- ^ 3843 (medium turquoise)
- ♣ 3862 (medium brown)
- Z 3864 (light brown)
- 3865 (soft white)

Cross stitch using one strand of each of two colours.

- ~ 543 (light mushroom) and 3865 (soft white)

Cross stitch using one strand of one colour.

- ◇ 3816 (medium grey green)
- ♣ 3817 (light grey green)

Outlining working in backstitch and long stitches, using one strand of one colour, unless stated otherwise.

- 310 (black)

Helpline

If you have any problems or require assistance in working this design, please contact:

Heritage Crafts Ltd., Redbrook Lane, Brereton, Rugeley, Staffs. WS15 1QU. Phone: 01889 575256.

HERITAGE
Crafts

© Copyright 2009