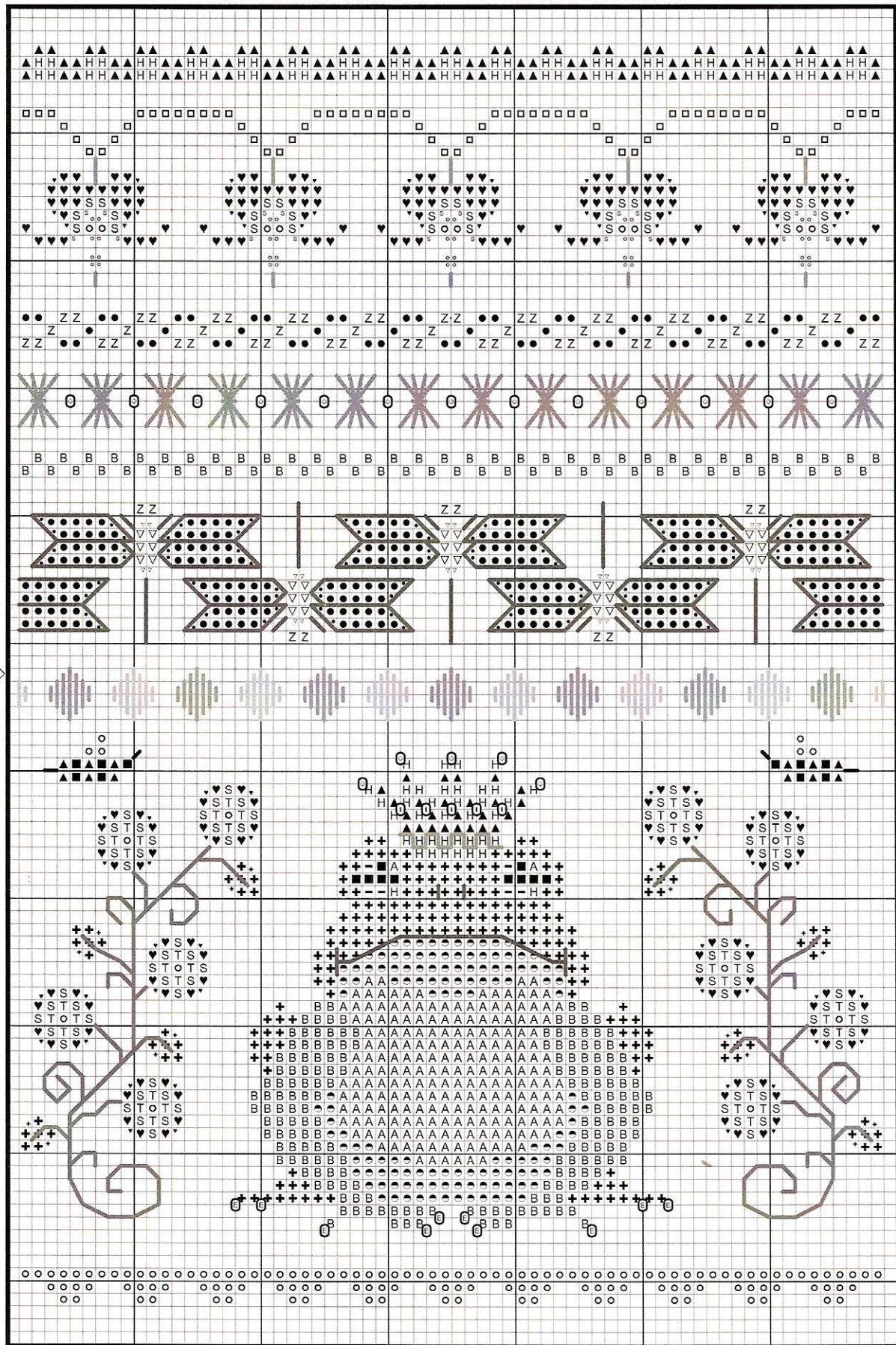


The Frog Prince Sampler



Special Instructions:

Beads:
 Beads on crown are 2011 gold and 3003 cranberry.
 Beads on feet are 431 Jade.
 Beads in-between harvest stitches are 2011 gold.

Backstitching:
 Crown is DMC 5282 Gold with two strands.
 Mouth is DMC 934 with two strands.
 Nose is DMC 310 with two strands.
 Flowers are DMC 3345, two strands.
 Satin stitched diamonds are DMC 782 and 3820.
 Bees, DMC 310, one strand.
 Dragonflies, DMC 3834 around wings, 310 for legs and tail.
 Harvest stitches, white, two strands.
 On top of bleeding hearts, 472, bottom, white, two strands.

DMC Floss

- 310 Black
- 472 Avocado green ul lt
- 782 Topaz dk
- 3021 Brown gray vy dk
- Also 5282 Gold, 934 Black Avocado Green, 3345 Hunter Green

Mill Hill Beads

- E 431 Jade

Legend:

- 3836 Grape lt
- 3820 Straw dk
- 760 Salmon
- 353 Peach
- 3834 Grape dk
- 470 Avocado green lt
- 3328 Salmon dk
- 3047 Yellow beige lt
- 3333 Peach
- 746 Off white
- 469 Avocado green
- 975 Golden brown dk
- 3046 Yellow beige md
- 3345 Hunter Green
- 2011 Victorian Gold
- 3003 Cranberry

Stitch count: 68W X99H
 Fabric: Charles Craft Monaco Tea-Dyed 28 ct.
 Stitched two over two.