



Squirrel

Bitty Buttons # 2

Design by Cathy Jean for

The
Victoria
SAMPLER

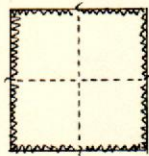


Bunny

Bitty Buttons # 4

This Bunny is cute as a button! Quick and easy to stitch in muted rustic tones, this is the fourth of four adorable winter "Bitty Buttons" designs. These woodland creatures are stitched on rustic linen and framed in my own handmade frames! They make adorable winter companions. Ask your shopowner for the Bunny Accessory Pack which contains all the threads and beads you need. Also ask for my NEW "Bitty Button Frames" with real wooden buttons! - Cathy

To prevent unraveling of the fabric, whipstitch or hem raw edges. Fold fabric gently in quarters. Run a basting thread along the vertical and horizontal fold lines to center your stitching. A roller frame is recommended to prevent distortion and handling of the fabric.



Follow the Main Chart to begin your stitching. Find the center of your Main Chart by following the arrows. Then find the center of your fabric using the two basting lines, and start there. Follow the symbols for colour, and use two strands of floss on 28ct for each Cross Stitch. Make sure that all the top arms face the same way in the entire Cross Stitch design. When

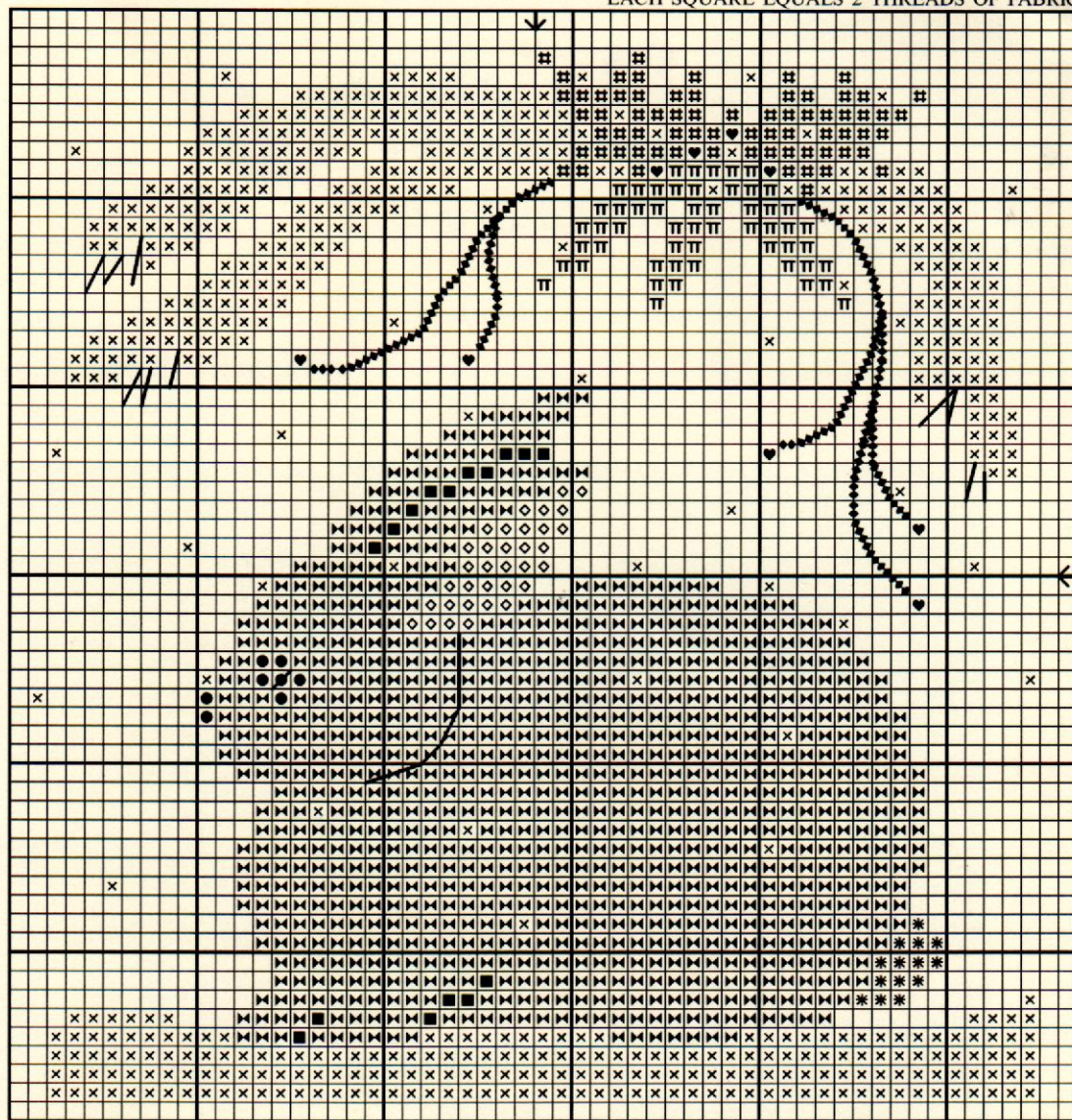
using overdyed floss it is important to complete each Cross Stitch before moving on to the next stitch. Note: For counting purposes, each square on the Main Chart represents a Cross Stitch worked over two horizontal and two vertical fabric threads of your linen. If you are using 14ct Aida cloth, each Cross Stitch is worked over one square of the fabric.

Design area: 56h x 54w (4"high x 3.85" wide)

Model: 28ct Dirty Linen Cashel Linen
(Cut fabric: 10" high X 10" wide)

Symbols and Materials:

- x Blended Needle: 1 strand each
GA - Picket Fence (white)
GA - Straw Bonnet (cream)
- * GA - Parchment (tan vy lt)
- ⌘ GA - Maple Syrup (browns med)
- Weeks - Chestnut (browns dk)
- ♥ GA - Mulberry (rust reds)
- ‡ GA - Baby Spinach (greens med)
- Weeks - Onyx (brown black)
- Π Weeks - Terra Cotta (orange rust)
- ◇ GA - Woodrose (rose brown med lt)
Weeks - Seaweed (blue greens dk)
Weeks - Bark (olive dk)
- Kreinkin #4 Braid #010HL - metallic black
- #24 tapestry needle



MAIN CHART

COPYRIGHT © CATHY JEAN and THE VICTORIA SAMPLER 2006

INSTRUCTIONS:

1. BUNNY, CARROTS, HOLLY AND SNOW: Cross Stitch with 2 matching strands of floss, according to symbols on Main Chart. Note: The snow is stitched with a blended needle of 1 strand of GA Picket Fence and 1 strand of GA Straw Bonnet. Using 1 strand of Kreinkin #4 Braid #010 metallic black Straight Stitch over two fabric threads on top of a Cross Stitch for the eye. Backstitch cheek outline with 2 strands of Weeks Chestnut.

2. HOLLY BRANCHES AND PINE NEEDLES: Using 2 matching strands of Weeks Seaweed Straight Stitch the pine needles. Backstitch the Holly branches with 2 matching strands of Weeks Bark.

FINISHING SUGGESTIONS: **Pillow:** fashion design into pillow (or gift bag) and perhaps stuff with lavender or potpourri. Add ribbons or charms!
Frame: Use a 4.5" x 4.5" opening in a Rustic Frame.

CONGRATULATIONS! You have completed the Bunny - the fourth of the Bitty Buttons series. Cross Stitch the 3 Bitty Buttons and complete the set!

"Bunny"

©Copyright 2006 by Cathy Jean and

The Victoria Sampler

8700 Aldous Terrace

Sidney, B.C. V8L 1L2

Website: <http://www.victoriasampler.com>

Email: Info@victoriasampler.com

The
Victoria
SAMPLER

Squirrel

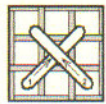
Bitty Buttons # 2

This Squirrel is cute as a button! Quick and easy to stitch in muted rustic tones, this is the second of four adorable winter "Bitty Buttons" designs. These woodland creatures are stitched on rustic linen and framed in my own handmade frames! They make adorable winter companions. Ask your shopowner for the Squirrel Accessory Pack which contains all the threads and beads you need. Also ask for my NEW "Bitty Button Frames" with real wooden buttons! - Cathy



To prevent unraveling of the fabric, whipstitch or hem raw edges. Fold fabric gently in quarters. Run a basting thread along the vertical and horizontal fold lines to center your stitching. A roller frame is recommended to prevent distortion and handling of the fabric.

Follow the Main Chart to begin your stitching. Find the center of your Main Chart by following the arrows. Then find the center of your fabric using the two basting lines, and start there. Follow the symbols for colour, and use two strands of floss on 28ct for each Cross Stitch. Make sure that all the top arms face the same way in the entire Cross Stitch design. When using overdyed floss it is important to complete each Cross Stitch before moving on to the next stitch. Note: For counting purposes, each square on the Main Chart represents a Cross



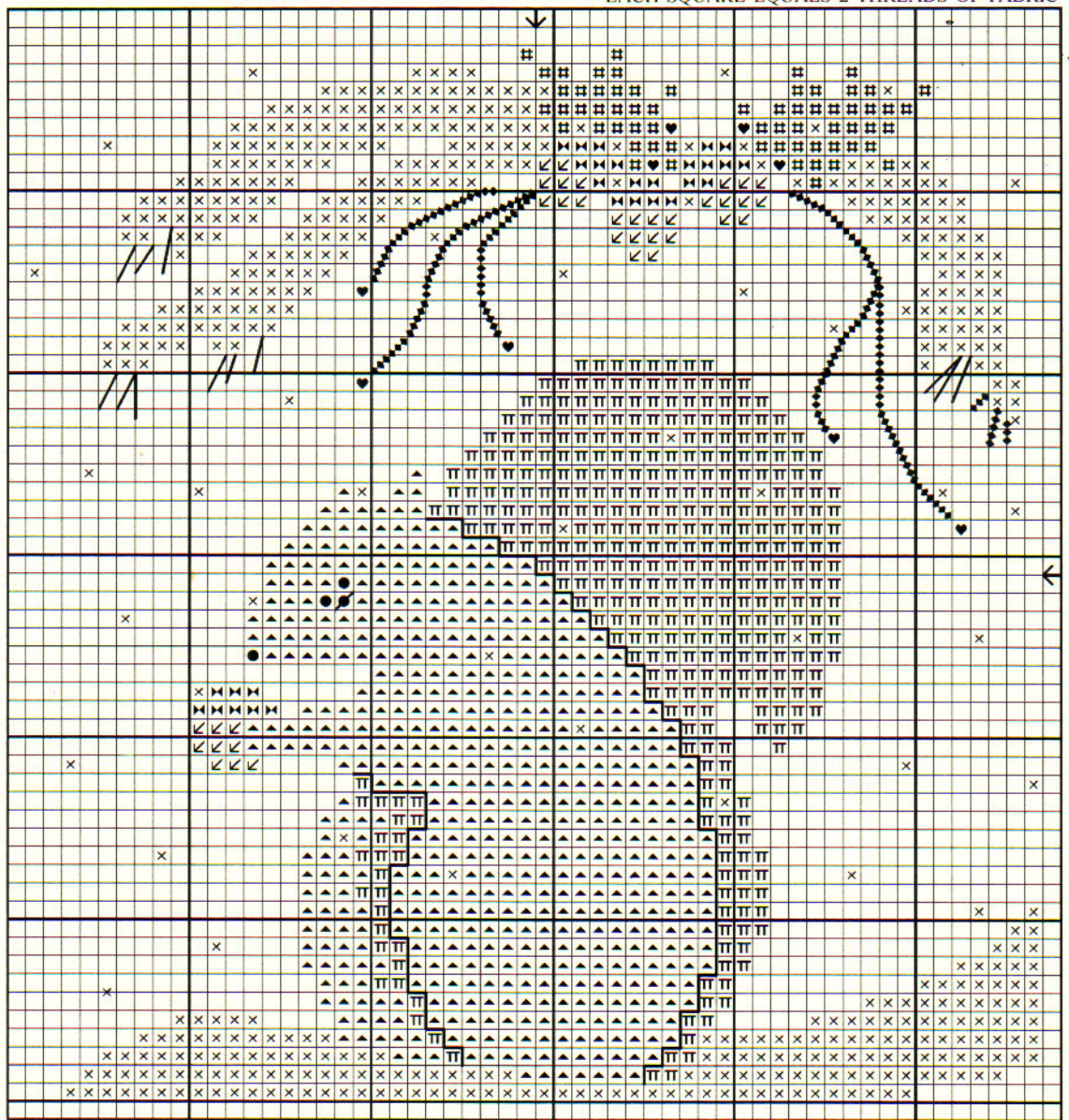
Stitch worked over two horizontal and two vertical fabric threads of your linen. If you are using 14ct Aida cloth, each Cross Stitch is worked over one square of the fabric.

Design area: 58h x 56w (4.15" high x 4" wide)
Model: 28ct Dirty Linen Cashel Linen
 (Cut fabric: 10" high X 10" wide)

Symbols and Materials:

- × Blended Needle: 1 strand each
 GA - Picket Fence (white)
 GA - Straw Bonnet (cream)
- TT Blended Needle: 1 strand each
 Weeks - Pelican Grey (greys med lt)
 GA - Maple Syrup (browns med)
- GA - Maple Syrup (browns med)
- ♥ GA - Mulberry (rust reds)
- # GA - Baby Spinach (greens med)
- ▲ Weeks - Pelican Grey (greys med lt)
- ↙ GA - Nutmeg (caramel)
- GA - Tin Bucket (greys dk)
 Weeks - Seaweed (blue greens dk)
 Weeks - Bark (olive dk)
 Kreinik #4 Braid #010HL - metallic black
 #24 tapestry needle

EACH SQUARE EQUALS 2 THREADS OF FABRIC



MAIN CHART

COPYRIGHT © CATHY JEAN and THE VICTORIA SAMPLER 2006

INSTRUCTIONS:

1. SQUIRREL, HOLLY AND SNOW: Cross Stitch with 2 matching strands of floss, according to symbols on Main Chart. **Note:** The snow is stitched with a blended needle of 1 strand of GA Picket Fence and 1 strand of GA Straw Bonnet. Use the darkest portion of Tin Bucket to stitch the nose and eye. Using 1 strand of Kreinik #4 Braid #010HL metallic black Straight Stitch over two fabric threads on top of a Cross Stitch for the eye. Backstitch squirrel outline with 1 strand of GA Tin Bucket.

2. HOLLY BRANCHES AND PINE NEEDLES: Using 2 matching strands of Weeks Seaweed Straight Stitch the pine needles. Backstitch the Holly branches with 2 matching strands of Weeks Bark.

FINISHING SUGGESTIONS: **Pillow:** fashion design into pillow (or gift bag) and perhaps stuff with lavender or potpourri. Add ribbons or charms!
Frame: Use a 4.5" x 4.5" opening in a Rustic Frame.

CONGRATULATIONS! You have completed the Squirrel - the second of the Bitty Buttons series. Cross Stitch the other 3 Bitty Buttons and complete the set!

"Squirrel"

©Copyright 2006 by Cathy Jean and
 The Victoria Sampler
 8700 Aldous Terrace
 Sidney, B.C. V8L 1L2
 Website: <http://www.victoriasampler.com>
 Email: Info@victoriasampler.com

The
Victoria
 SAMPLER