

# Turtles All the Way Down

Stitch Count: 44w x 283h

Design Size over 2 threads of linen on 27ct banding: 3.3 x 21"

Banding: 27 count 4.7" wide "Simplicity" in Celery (MH18471529)

Courtesy of Wichel Imports

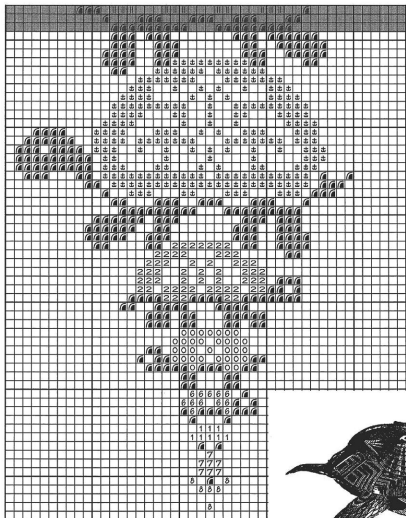
N162 Hwy 35, Stoddard, WI 54658

www.wichel.com

Phone 800-356-9516 | Fax 608-788-6040

Cross Stitches: 2 plies DMC floss over 2 threads of linen

Bell Pull Hardware, also available from Wichel: 14cm Iron #512414



Copyright (c) 2018 Ink Circles



One yard of each color is enough to complete a large turtle shell, so feel free to change it up a bit to use your stash or convert to different threads.

Also, obviously, you can adjust the number of turtles in your stack to fit whatever turtle project you wish.

Symbol	Number	Color
8	155	Blue Violet-MD DK
3	367	Pistachio Green-DK
6	470	Avocado Green-LT
0	501	Blue Green-DK
	731	Olive Green-DK
4	733	Olive Green-MD
±	904	Parrot Green-VY DK
7	910	Emerald Green-DK
▩	935	Avocado Green-DK
9	3346	Munter Green
1	3363	Pine Green-MD
5	3809	Turquoise-VY DK
2	3814	Aquamarine

An infinitely tall stack of turtles for your stitching pleasure. Fortunately, they get smaller towards the bottom. What does it all mean?

Centuries ago, philosophers discussed how the universe was put together, coming up with some very creative cosmological theories. Without an understanding of planetary gravity, some theorized that the (flat) earth was held up atop the back of a large beast – most popularly, a turtle or an elephant. When asked what was holding up that turtle, they responded that it was another turtle. And beneath that; another turtle. In fact, it was turtles all the way down. Versions of this story show up anecdotally in various cultures and writings even to this day.