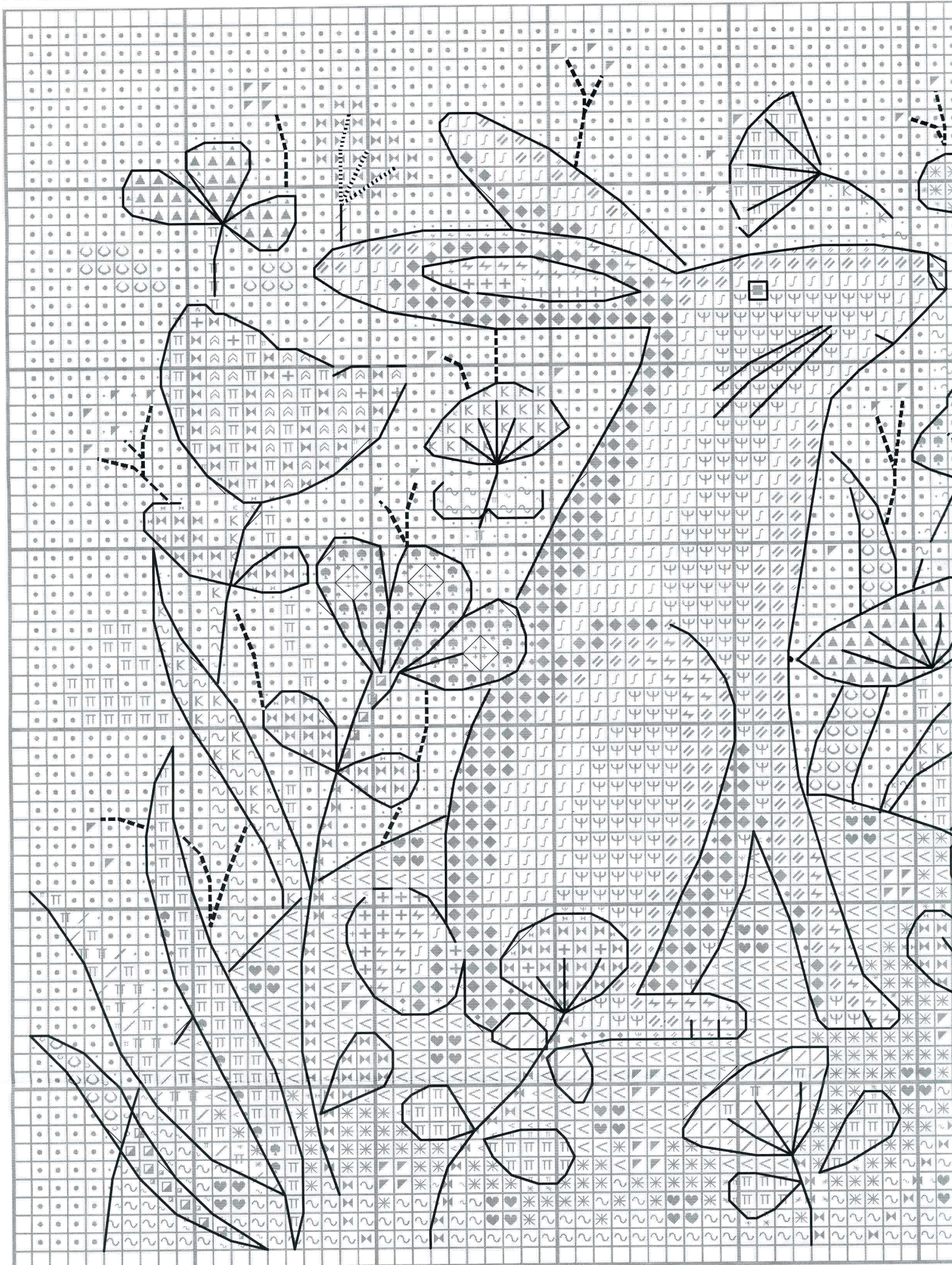
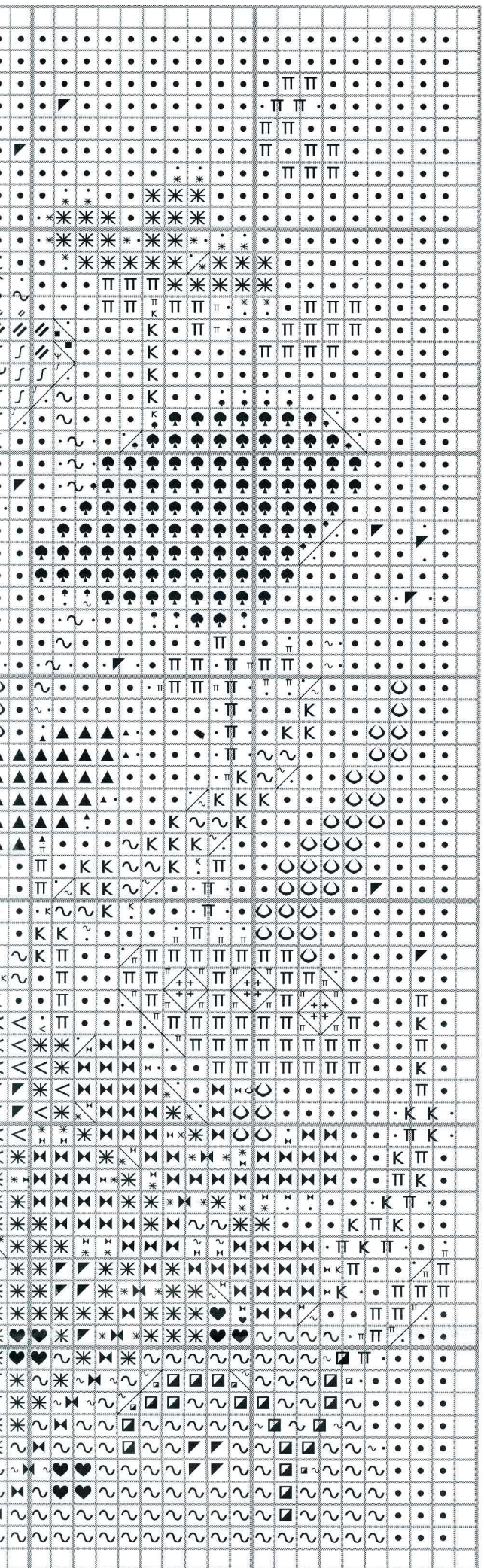


# HARE





# SHEET 1 CROSS STITCH



Quantities listed below are for six stranded, 61cm (2ft) lengths of DMC stranded cottons.

DMC	Quantity	DMC	Quantity
210	2	745	15
310	4	828	2
369	2	906	2
451	3	907	4
452	4	3350	1
453	4	3808	5
469	2	3819	4
471	2	3865	2
597	5		

**Cross stitch** using two strands of one colour.

- ▼ 210 (violet)
- 310 (black)
- ◊ 369 (pale green)
- ◆ 451 (grey)
- ∩ 452 (medium grey)
- ◇ 453 (light grey)
- ▲ 469 (dark green)
- K 471 (sage)
- Π 597 (medium blue)
- 745 (yellow)
- / 828 (sky blue)
- \* 907 (apple green)
- ♥ 3350 (raspberry)
- ⋈ 3808 (dark blue)
- ~ 3819 (moss green)
- + 3865 (winter white)

**Cross stitch** using one strand of each of two colours.

- Ψ 452 (medium grey) and 453 (light grey)
- ⚡ 453 (light grey) and 3865 (winter white)
- ▣ 469 (dark green) and 3808 (dark blue)
- ⋈ 597 (medium blue) and 369 (pale green)
- < 906 (green) and 907 (apple green)
- ♣ 3808 (dark blue) and 597 (medium blue)

Fine diagonal lines on this chart indicate diagonal half stitches. Please see sheet 2 for outlining detail.

## Helpline

If you have any problems or require assistance in working this design, please contact:

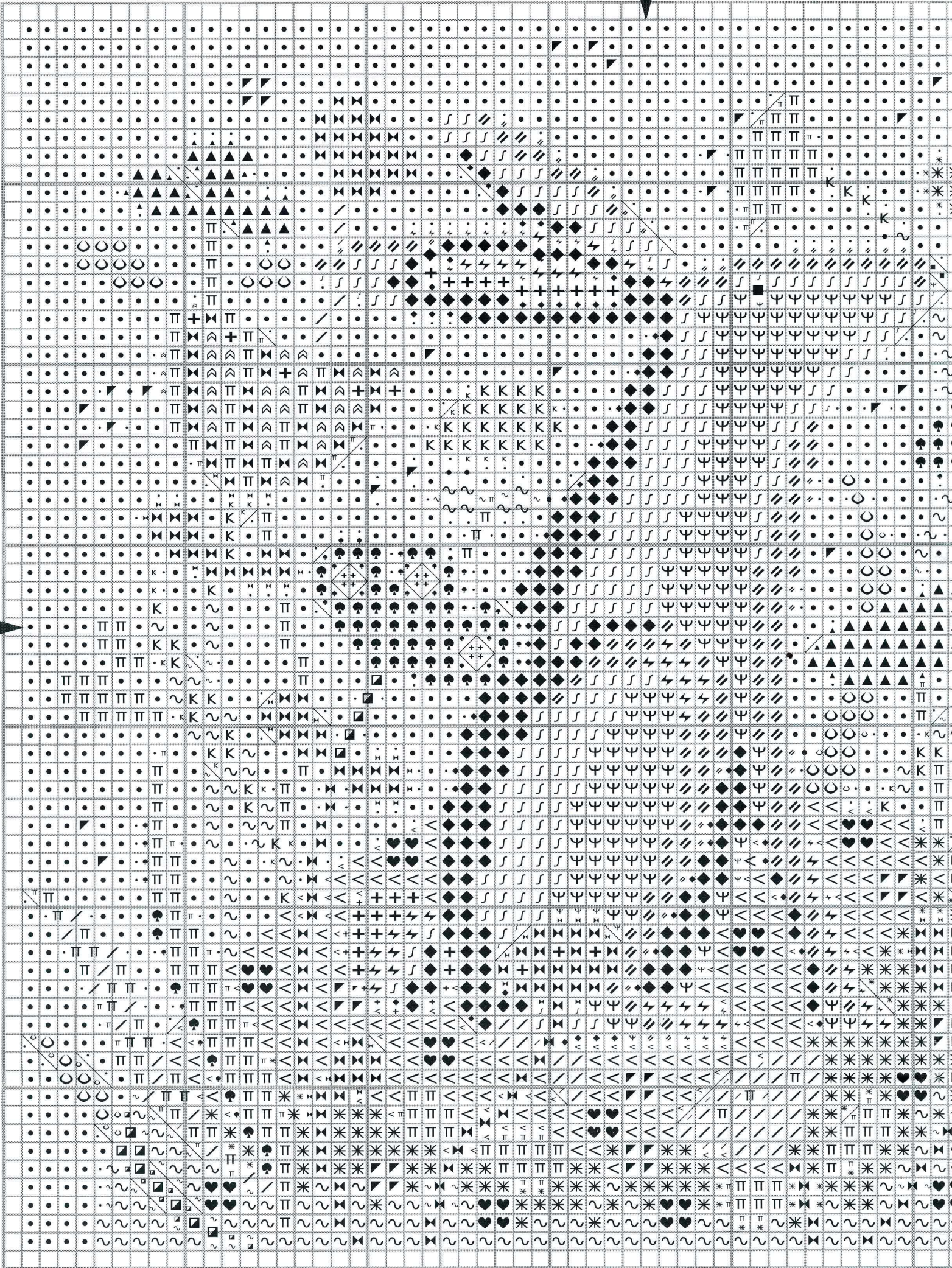
Heritage Crafts Ltd., Redbrook Lane,  
 Brereton, Rugeley, Staffs. WS15 1QU.  
 T: 01889 575256. W: www.hcrafts.com  
 E: enquiries@hcrafts.com



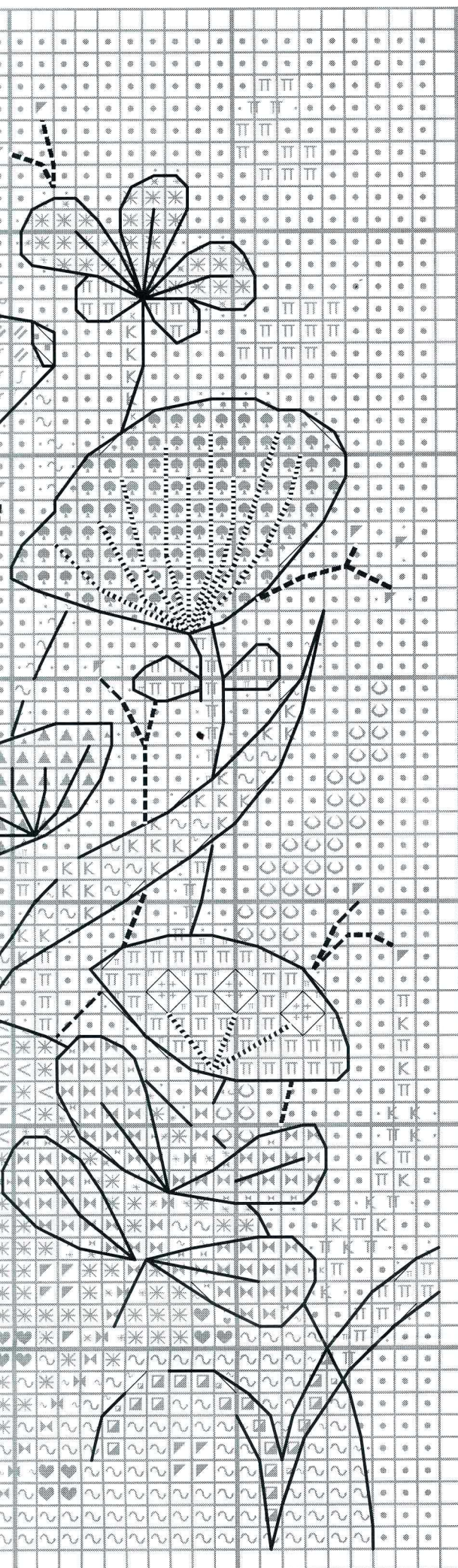


HARE

SH







**Outlining** working in backstitch and long stitches.

--- 210 (violet) - using 2 strands.

— 310 (black) - using 1 strand.

..... 3865 (winter white) - using 2 strands.

### Helpline

If you have any problems or require assistance in working this design, please contact:

Heritage Crafts Ltd., Redbrook Lane,  
Brereton, Rugeley, Staffs. WS15 1QU.  
T: 01889 575256. W: [www.hcrafts.com](http://www.hcrafts.com)  
E: [enquiries@hcrafts.com](mailto:enquiries@hcrafts.com)

