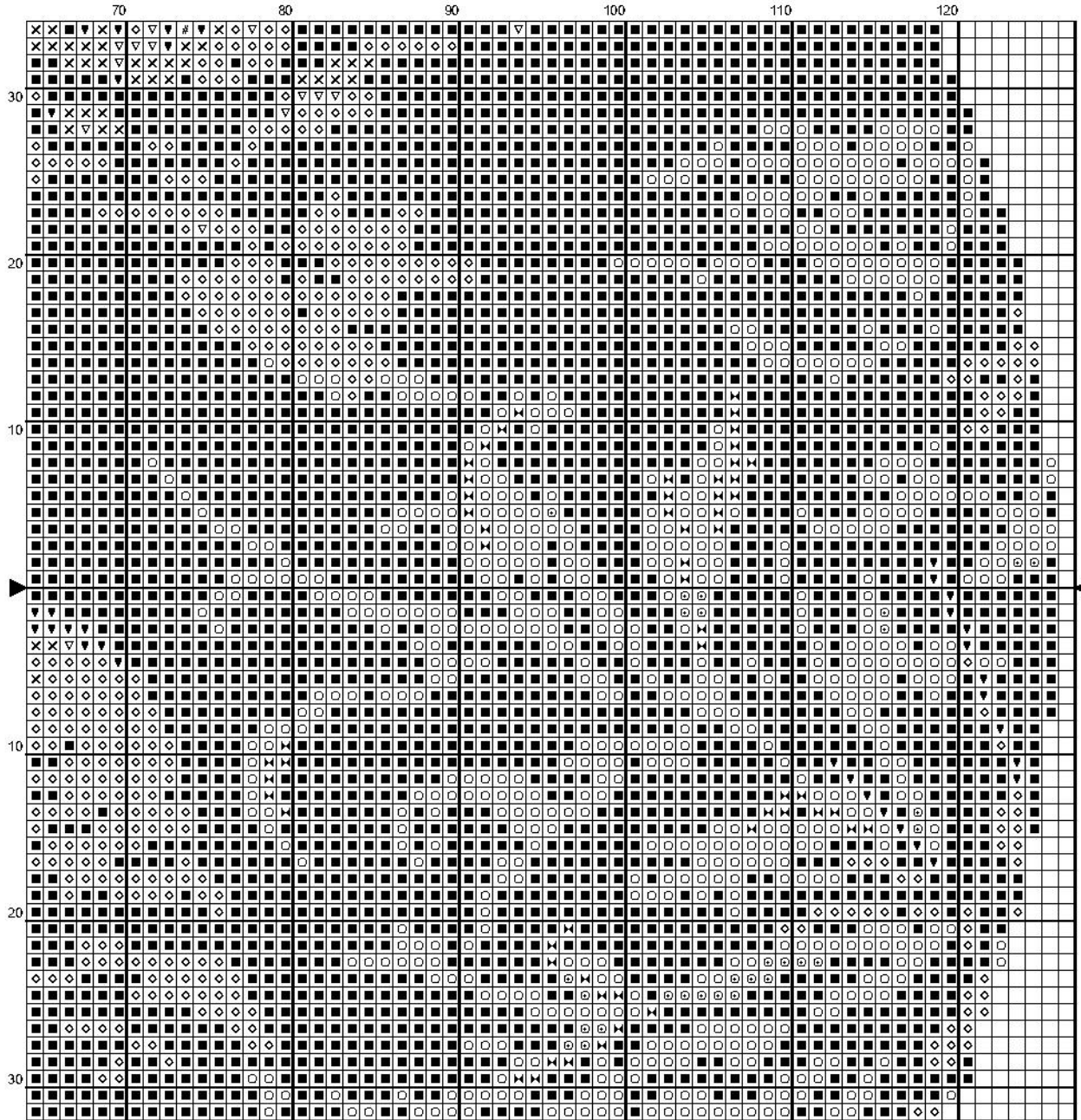
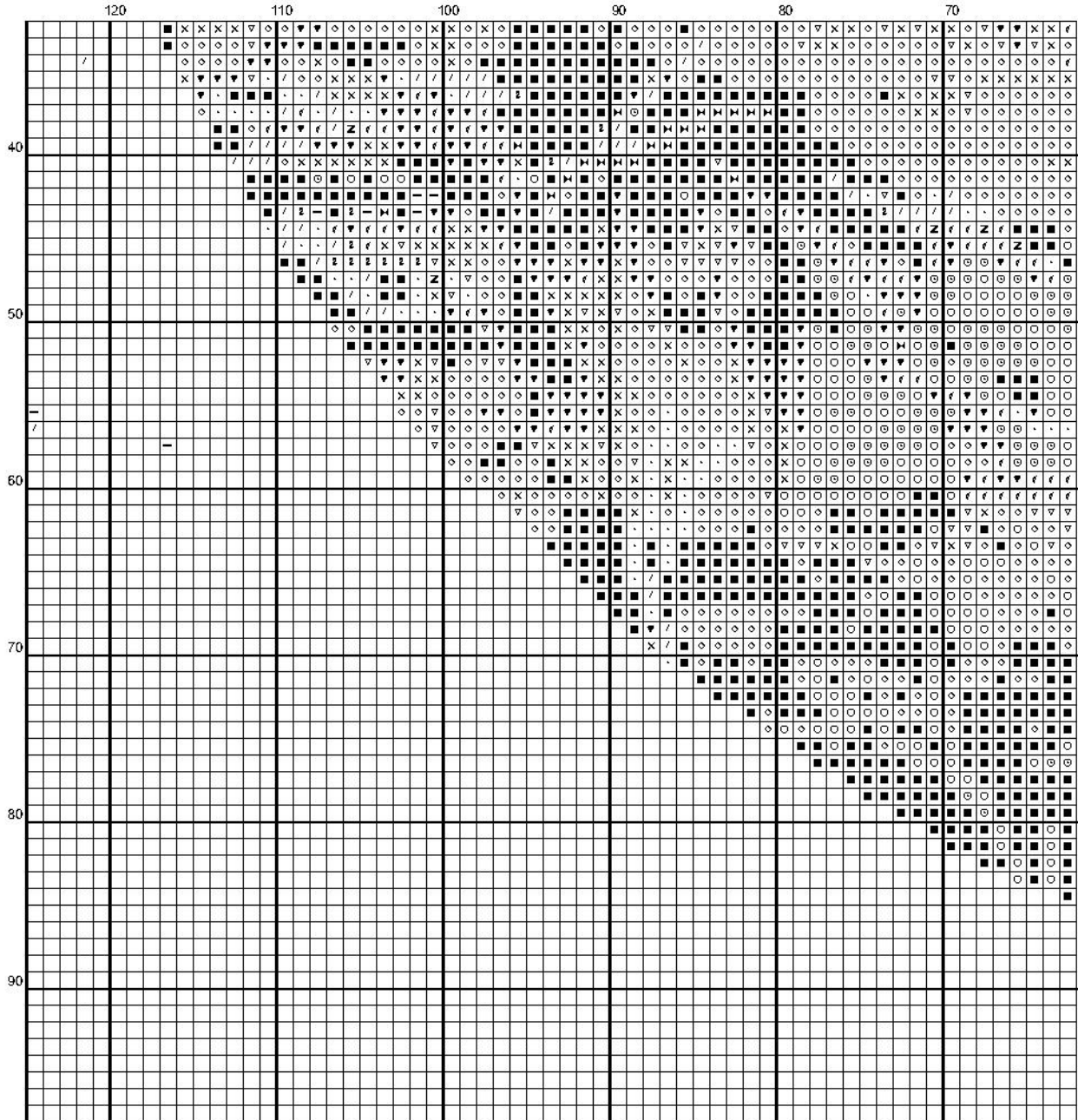
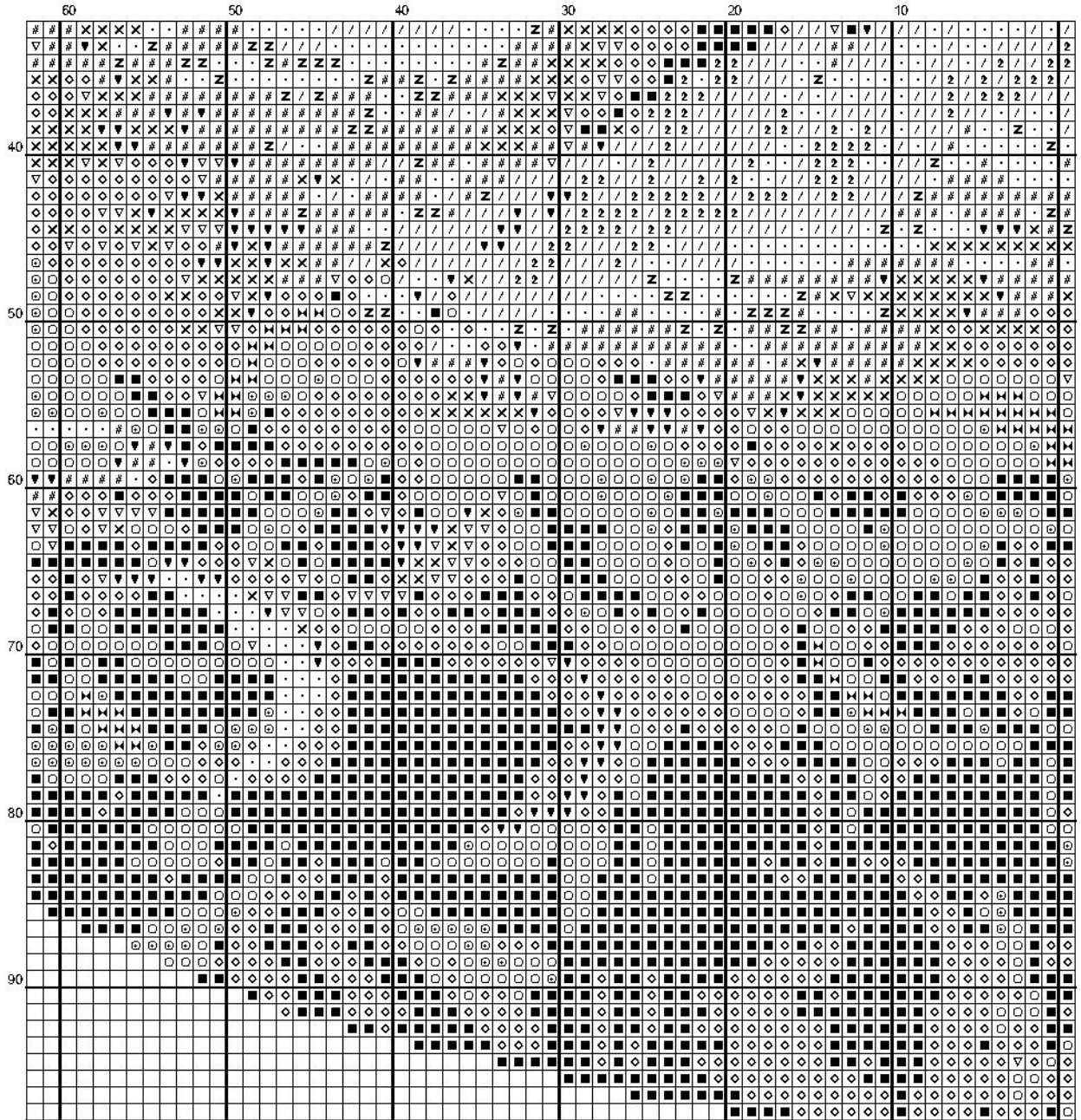
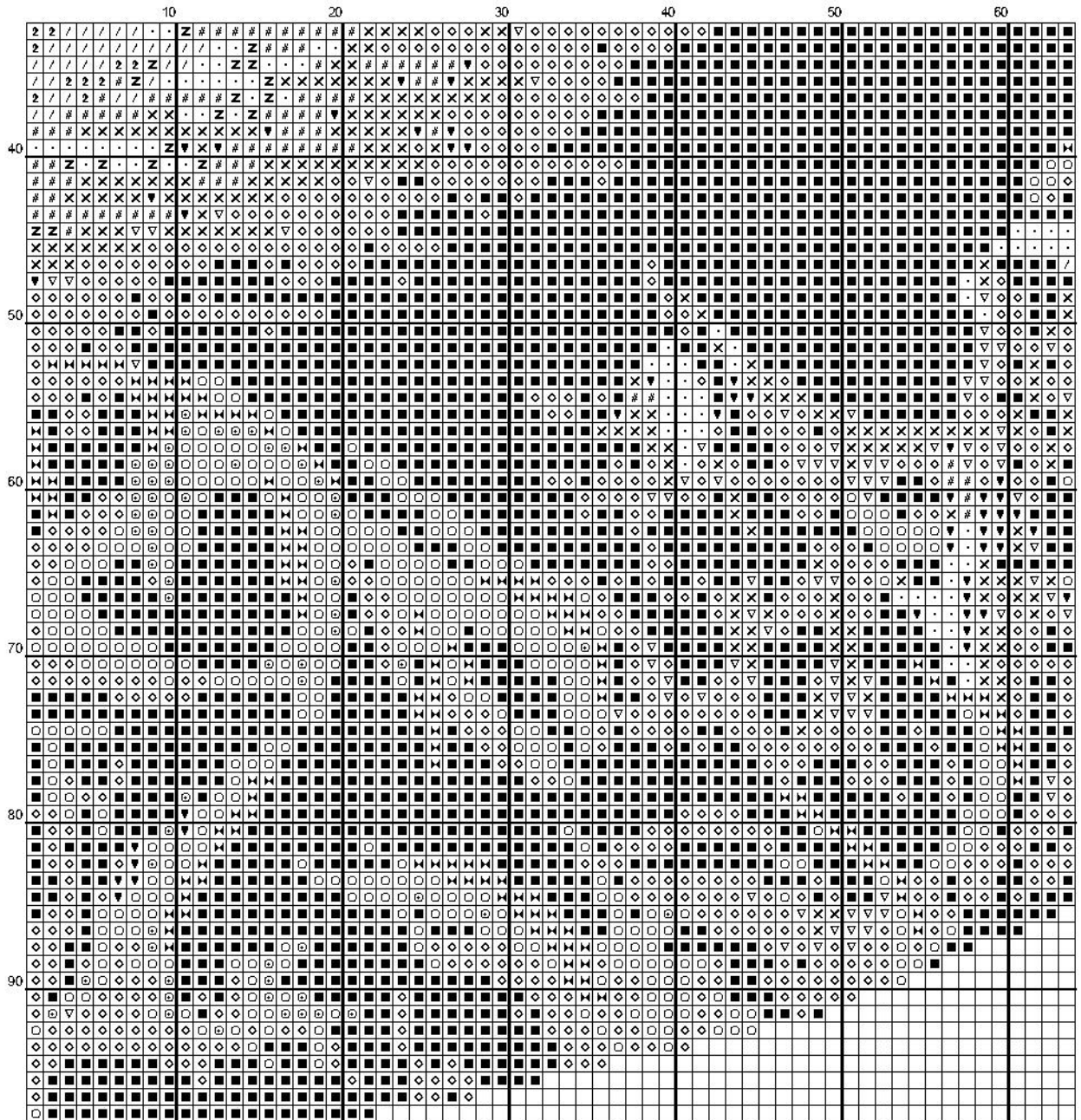


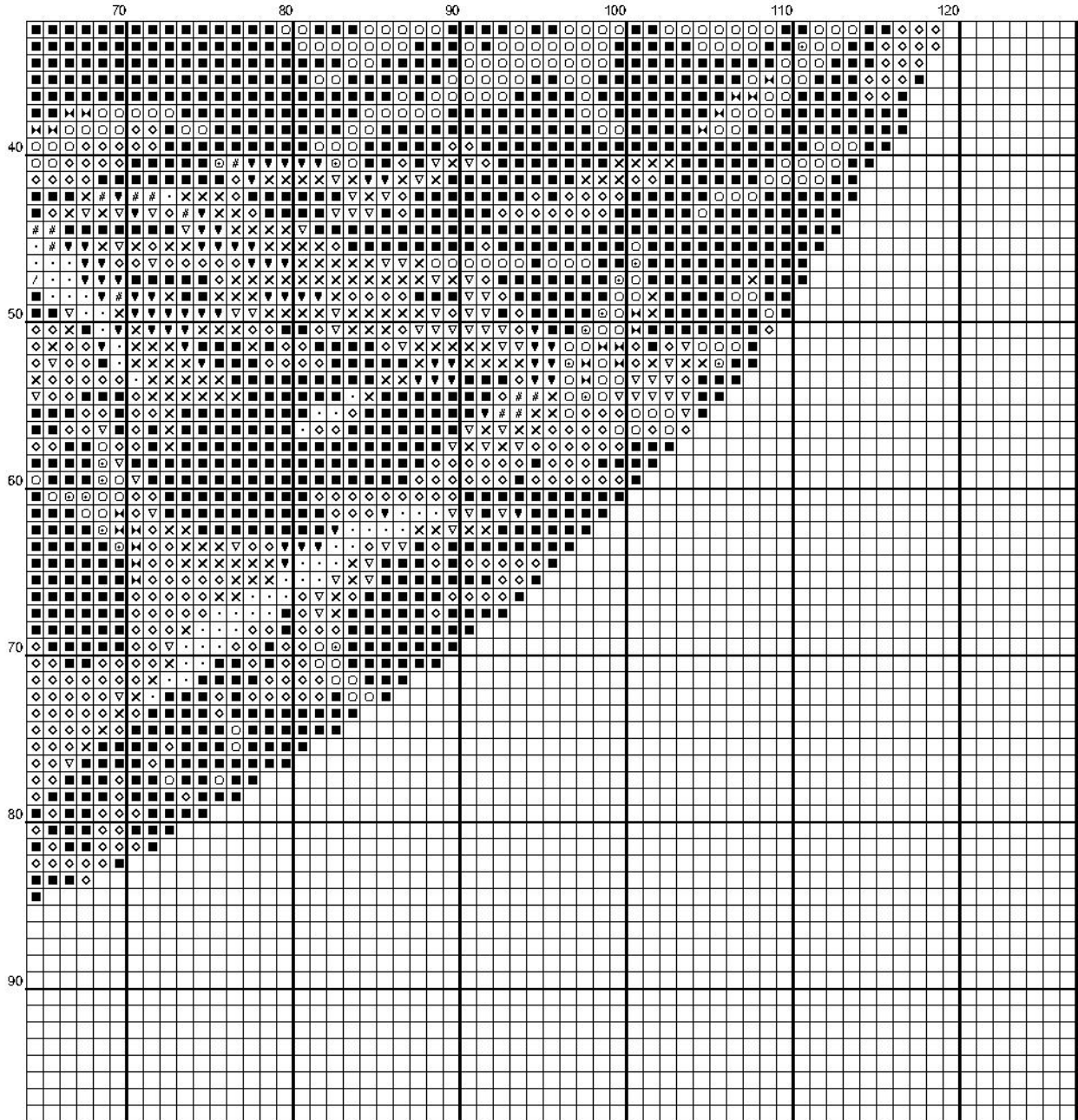
	10	20	30	40	50	60
30						
20						
10						
10						
20						
30						











Instructions and Symbol Key for Design "The Fox"

Fabric: 14 count

Stitches: 251 x 198 **Size:** 17.93 x 14.14 inches or 45.54 x 35.92 cm

Colours: DMC

Use 2 strands of thread for cross stitch

<u>Sym</u>	<u>No.</u>	<u>Colour Name</u>	<u>Sym</u>	<u>No.</u>	<u>Colour Name</u>
■	310	Black	◇	433	Chocolate brown
○	3768	Storm grey	▽	434	Cigar brown
×	435	Tabacco brown	⊙	926	Grey green
⋈	927	Oyster grey	♥	3828	Oaktree brown
#	436	Teddy brown	·	3856	Pale beechwood
⚡	3827	Beech brown	/	945	Eggshell cream
⋈	928	Light pearl grey	2	3866	Garlic cream
—	3865	Winter white			

This chart has been designed and printed with our best intentions of being without mistakes. However, the possibility of human error, printing mistakes or the variation of individual stitching does exist, and we regret that we cannot be responsible for this.

Produced using Cross Stitch Professional for Windows www.dpsoftware.co.uk
Copyright © www.alitadesigns.com 2014 All rights reserved.