

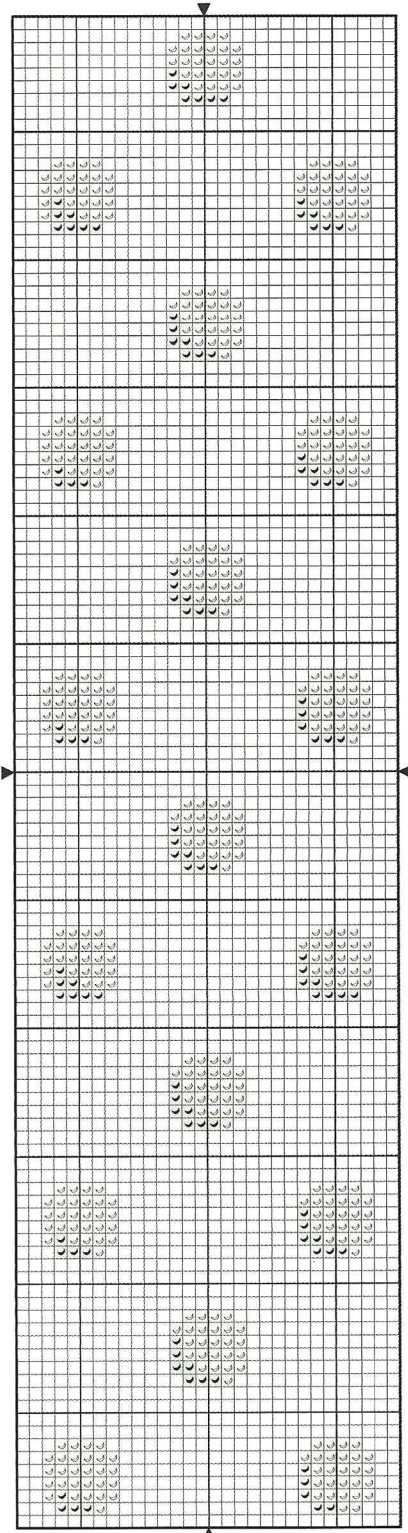
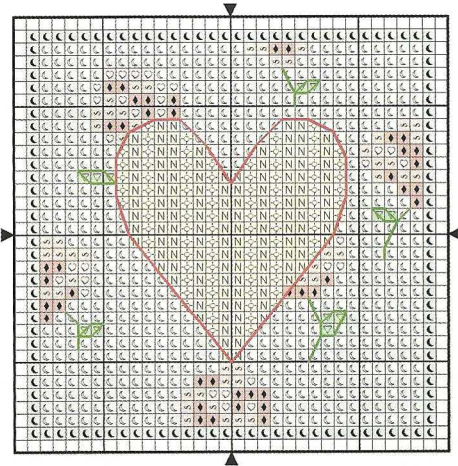
**Crazy tip!**  
Repeat the dotted border and heart charts around each edge of your cushion design

## Sarah Says...



I've recently become an aunty to a gorgeous baby girl, Amie, and I can't wait to stitch this cushion as a gift for her lucky parents. The little birds and sweet hearts are so adorable! I'm going to keep this design in a handy place as I have a feeling I'll want to stitch it over and over again!

**Sarah Trevor, Deputy Production Editor *Cross Stitch Crazy***



### Elephant cushion

▼ DMC ▼ Anchor ▼ Madeira

✕ Cross stitch in two strands

◆	335	38	506
☾	598	1062	1111
⊕	746	275	2511
♥	818	23	502
♥	899	38	506
▽	913	204	1212
∞	3326	36	606
■	3799	236	1713
☾	3811	1060	1101
N	3823	386	2512
∩	3865	2	2403

✕ Backstitch in one strand

—	309	42	508
—	818	23	502
—	911	205	1214
—	3799	236	1713

✕ French knots in one strand

●	3799	236	1713
---	------	-----	------

✕ Whole stitches only

Stitch count 180 (h) x 180 (w)  
Design area on 14-count fabric  
32.5x32.5cm (12<sup>3</sup>/<sub>4</sub>x12<sup>3</sup>/<sub>4</sub>in)  
Stitched by Rebecca Tuffnell