

GET STARTED

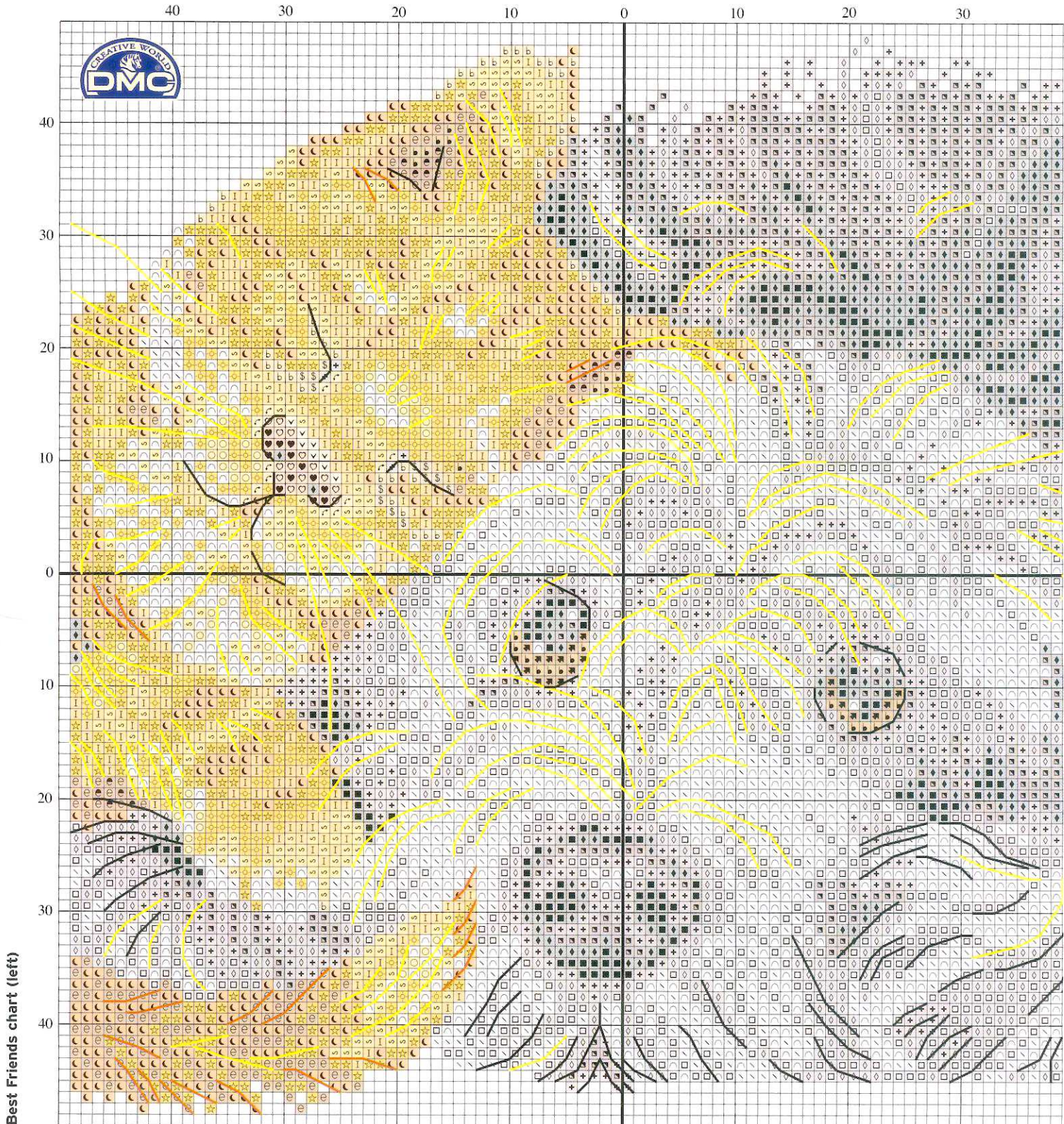
Before you begin stitching, find the centre of your fabric and sew tacking lines vertically and horizontally through the centre in a brightly coloured thread. This will help you keep your place and can be easily unpicked when you have finished cross stitching.



Amanda,
Editor

I just love the new Best Friends kits and can't wait to stitch this design. Do write to me at the usual address or email letters@cross-stitching.com if you stitch this picture.

Stretch over several squares to make backstitches in to long stitches. This is quick to do and makes the sleepy whiskers look even more realistic. Make sure you don't pull the thread too tightly though, or your fabric may pucker.

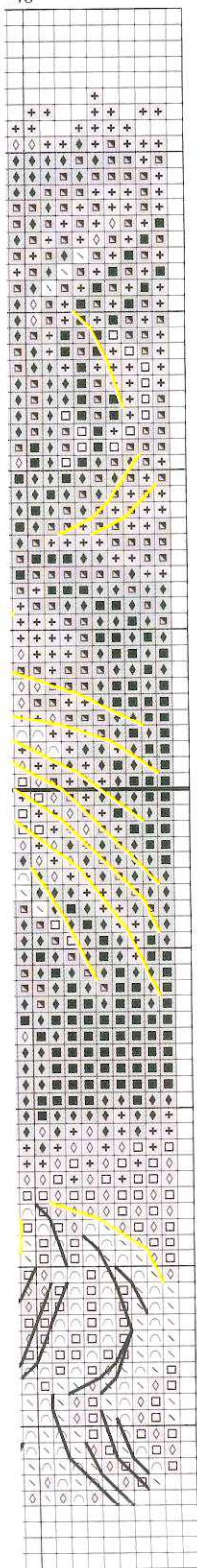


Best Friends chart (left)

TIP

Work dark shades first and the white cross stitches last so they stay fresh and clean.

40



Best Friends chart (right)

BEST FRIENDS KEY

★ Cross stitch in two strands

	DMC	
∩	blanc	white
♥	152	pink
e	300	dark tan
e	301	tan
■	310	black
+	317	grey
◇	318	light grey
I	402	beige
■	413	dark grey
□	415	very light grey
b	433	dark brown
b	436	brown
r	437	light brown
⊙	676	sand
○	677	light sand
♡	754	light pink
∖	762	off white
\$	841	mushroom
⚡	898	v dark brown
∨	948	peach
☆	977	rust
☾	3776	light tan
◆	3799	very dark grey
∞	3856	orange

★ Backstitch in one strand

	DMC	
—	blanc	white
—	413	dark grey
—	433	dark brown

★ **STITCH COUNT** 96 high x 98 wide

★ DESIGN AREA

14 HPI (28-count evenweave) – 17.1 x 17.5cm (7x7in)

16 HPI – 15 x 15.3cm (6x6¼in)

18 HPI – 13.3 x 13.6cm (5½x5½in)

This design was stitched using DMC stranded cotton

SHOPPING LIST

FABRIC

a piece of DMC 14-count white aida measuring 27x27cm (11x11in)

THREADS

stranded cotton

NEEDLES

size 24 tapestry needle

FRAME

of your choice with a minimum aperture of 17x17cm (6¾x6¾in)

TOTAL COST

£16 (excluding frame)