



► It was in the background that I wanted to convey the storybook feel, and this was easy to create with the gnarled trees that frame the piece.

I chose to create the design as an oval shape to make the picture more interesting and less of a straight nature study. I have also extended the image by breaking up and dividing the picture at the top and at the bottom. This helps to make the overall shape much softer and more subtle."

## Going the distance

The composition of the piece was another important aspect for Maria. "I used three different planes of space to create a sense of distance – firstly the foreground with the fawn and the long grass and bluebells, then the middle ground (where the forest is established with the twisted trees and mossy forest floor) and finally the background, with the hazy bushes and the blue skies."

Finally Maria decided to add a scattering of French knots for the

## Shopping list...

### Shopping list

- ◆ 14HPI aida 20x16in (50x40cm), ivory (or 28HPI evenweave)
- ◆ Stranded cotton as listed in the key
- ◆ Frame oval with a 12x10in (31x25cm) aperture, gold
- ◆ Turn to page 68 for more hints and help!

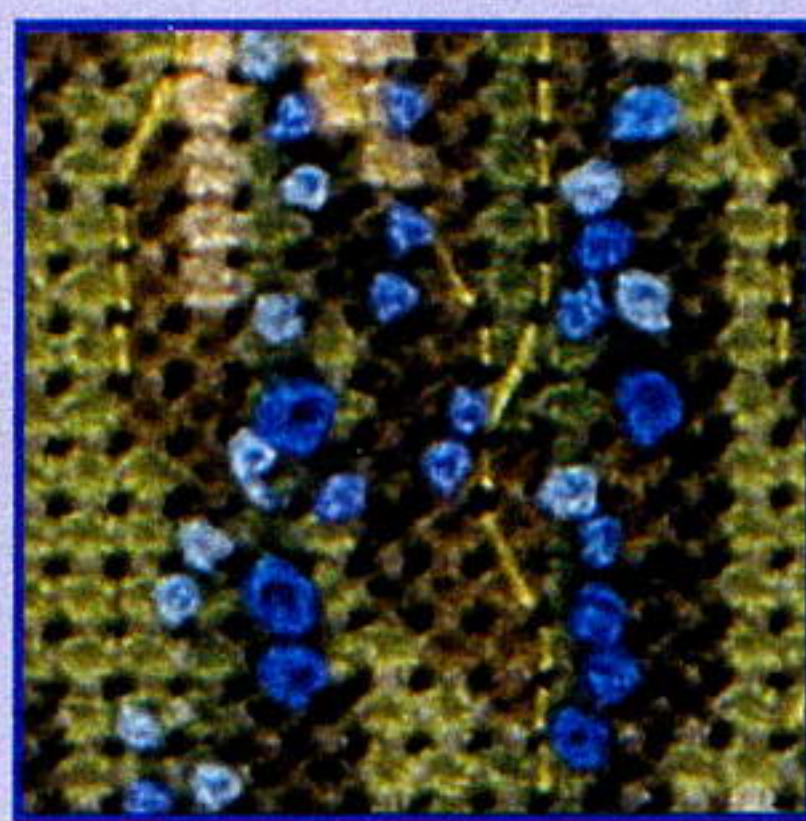
### Design details

- ◆ Stitched using DMC threads on 14HPI aida
- ◆ Stitch count 140x112
- ◆ Design area 10x8in (25x20cm)
- ◆ Extras French knots

**DON'T MISS OUT!**  
Complete materials pack for just **£18.25**  
turn to page 65

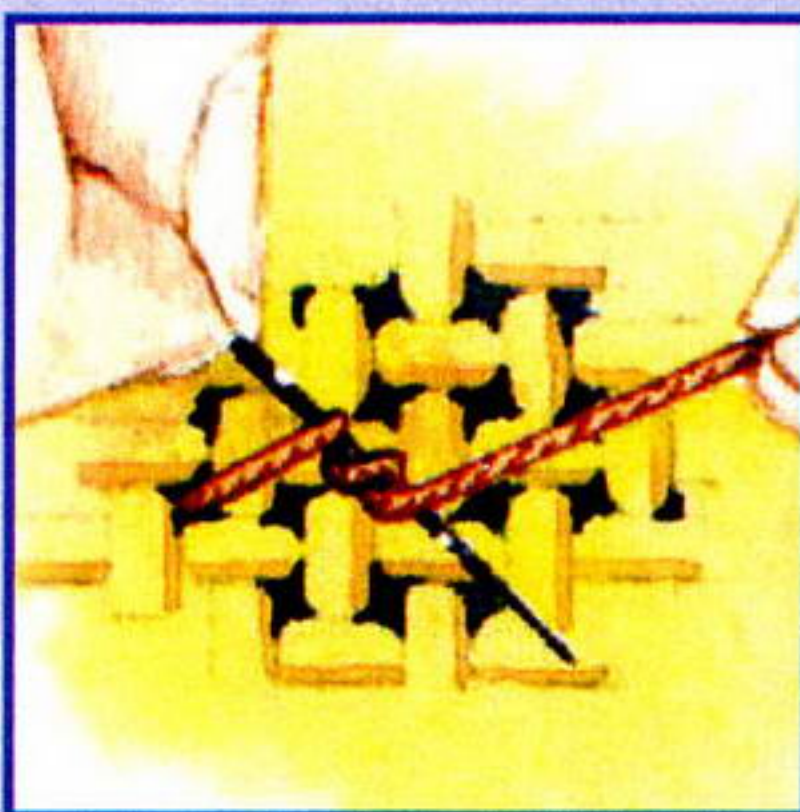
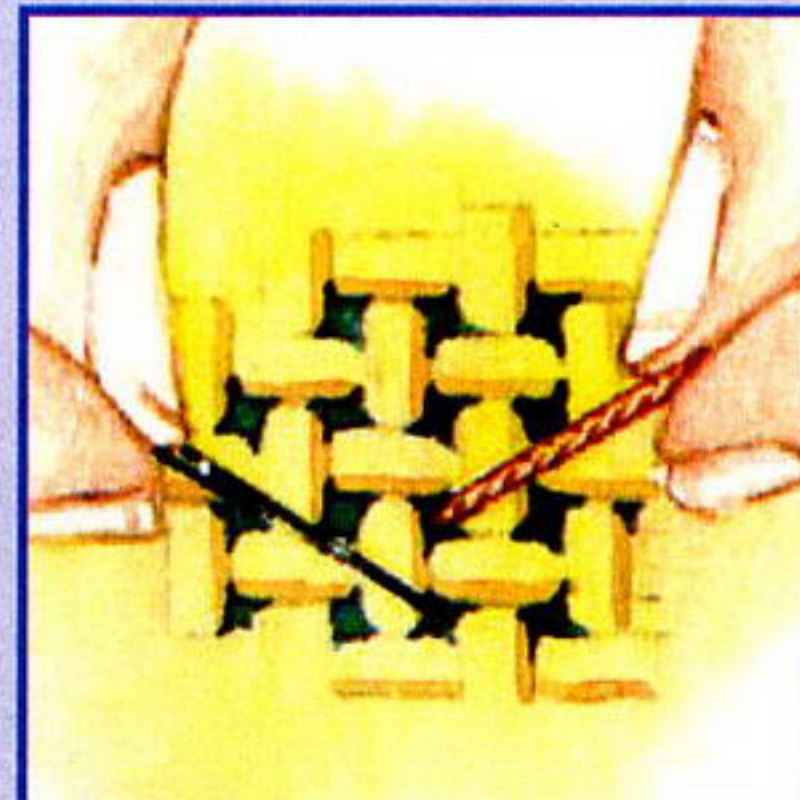


## Discover... French knots Babe in the woods



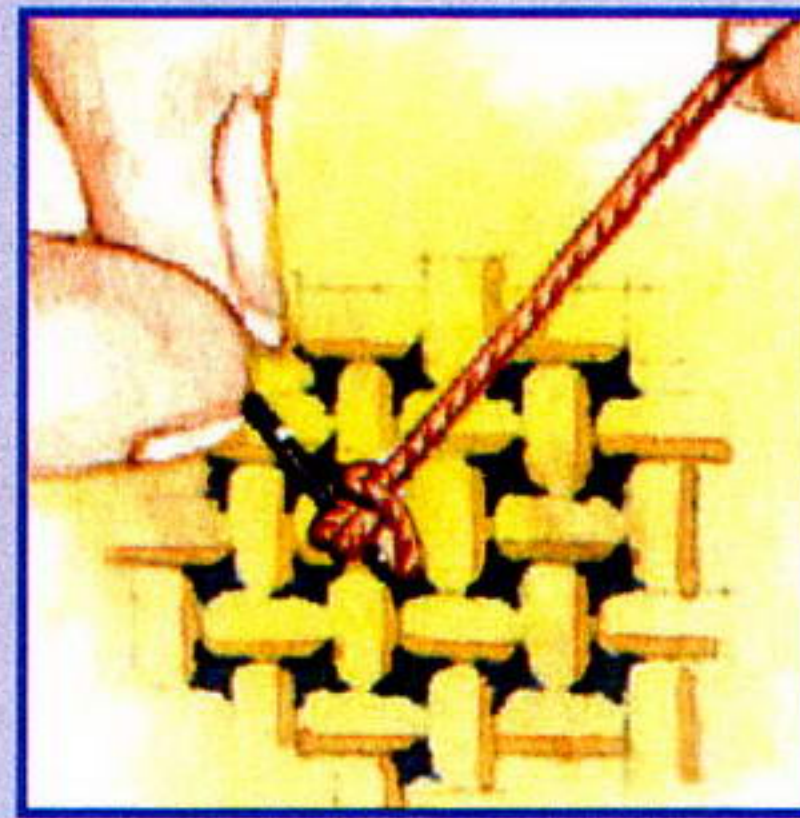
**1** Bring the needle up through the fabric, and using your thumb and forefinger, hold the thread a few inches from where it came through the fabric.

*French knots are easy to learn and can really enhance your stitching. Simply follow our step by step guide*



**2** Keeping the thread reasonably taut, twist the needle twice around the thread. Vary the number of twists to make larger or smaller knots.

**3** Still keeping hold of the thread, push the needle back down into the fabric close to where it emerged. Pull the needle through gently to form a knot.



flowers, to give the design more texture and to break up the green areas. They also portray perfectly the way bluebells tend to be speckled throughout woodland, merging into one beautiful colour from a distance.

## No more knotty problems!

It's worth getting to grips with the French knots in this piece if you're not already an expert. They add a sense of perspective to the piece and make perfect bluebells.

Follow the step-by-step guide on this page and practise on a separate piece of fabric if you like. Once you master this easy stitch, you'll be dotting them liberally through all your pieces! If you don't fancy French knots, try using coloured beads instead.

The softer border shape is achieved by using groups of one or two stitches dotted at the edges of the piece. Finish these with care as they will show up if they are slightly raggedy! There's lots of subtle shading on the fawn to create that soft and downy effect. Work in a good light and take your time.

### DMC Anchor Madeira Colour Cross stitch in two strands

◻◻	White	002	2402	White
◆◆	436	363	2011	Dark tan
◇◇	437	362	2012	Light tan
++	472	253	1414	Light green
▲▲	642	392	1812	Medium stone
△△	644	391	1813	Light stone
⊠⊠	739	366	2014	Cream
~~	775	128	1001	Light sky blue
	822	390	1814	Very light stone
⊙⊙	926	850	1707	Light grey blue
●●	936	846	1507	Dark olive green
♡♡	948	1011	0306	Light flesh
♥♥	950	4146	2309	Dark flesh
▢▢	3011	856	1607	Medium olive green
▣▣	3012	855	1606	Light olive green
▤▤	3013	853	1605	V light olive green
▥▥	3021	905	1904	Dark brown
▦▦	3363	262	1602	Dark green
▧▧	3364	261	1603	Medium green
▨▨	3752	1032	1708	Dark sky blue
▩▩	3768	779	2508	Dark grey blue
##	3782	388	1906	Light brown
###	3787	393	1811	Dark stone
####	3790	904	1905	Medium brown
#####	3862	944	1912	Taupe

### Backstitch in one strand

—	*472	253	1414	Light green grass in foreground
—	*3021	905	1904	Dark brown deer, trees

### French knots in two strands

●●	727	293	0110	Yellow flowers in distance
●●	798	146	0911	Dark blue bluebells
●●	3839	139	0906	Medium blue bluebells
●●	3840	144	0907	Light blue all other outlines and details

Stitched using DMC threads on 14HPI aida  
Stitch count 140x112 Design area 10x8in (25x20cm)  
\*indicates colour is listed earlier in the key

## Coming soon...

### next month

Don't miss out on next month's design, also 'inspired by nature'. This stunning peacock project, again from Maria Diaz, will be featured in our August issue, on sale 2 July.

