

BLUEBELL KITTEN

Original Artwork by Valerie Pfeiffer

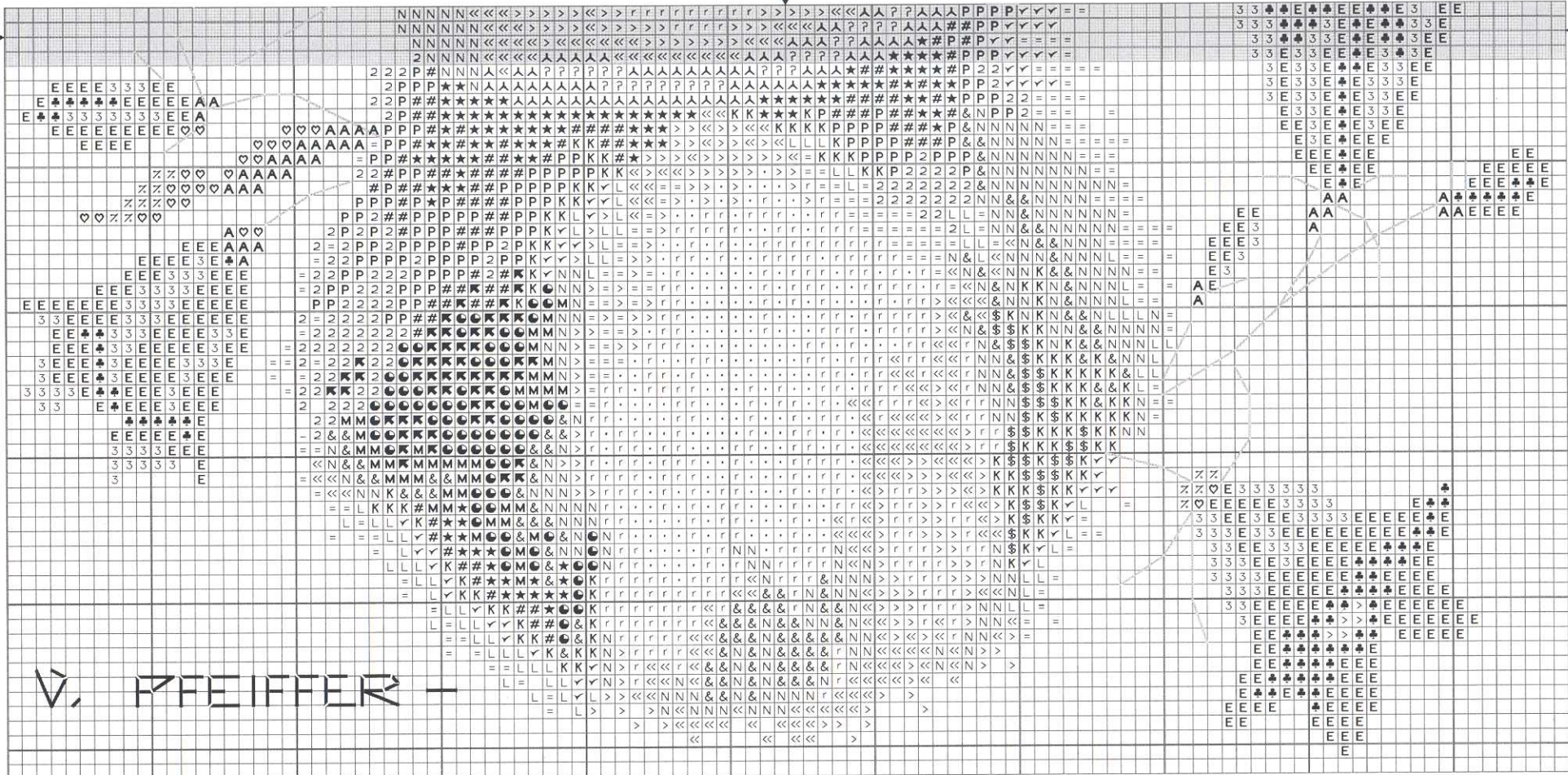
Counted Cross Stitch Chart
Stitch Count - 106 x 100

STUDIO ART

Needlework



Create a Masterpiece!
Clear, Distinct Symbols
Colour Key on each Page
Unique Chart "Join" Tabs



Copyright 2004 ~ all rights reserved ~ Printed in Canada

Colour Key 2 strands DMC (for backstitches see page S1)

•	White	N	318	\$	434	L	738	∇	3348
⋈	White + 762	E	334	#	434 + 3826	=	739	3	3755
◀	310	人	340	P	435 + 976	π	739 + 3827	M	3799
●	310 + 3799	?	341	K	436	>	762		
♣	312	<<	415	✓	437	A	987		
&	317 + 414	★	433 + 975	2	437 + 3827	♡	989		

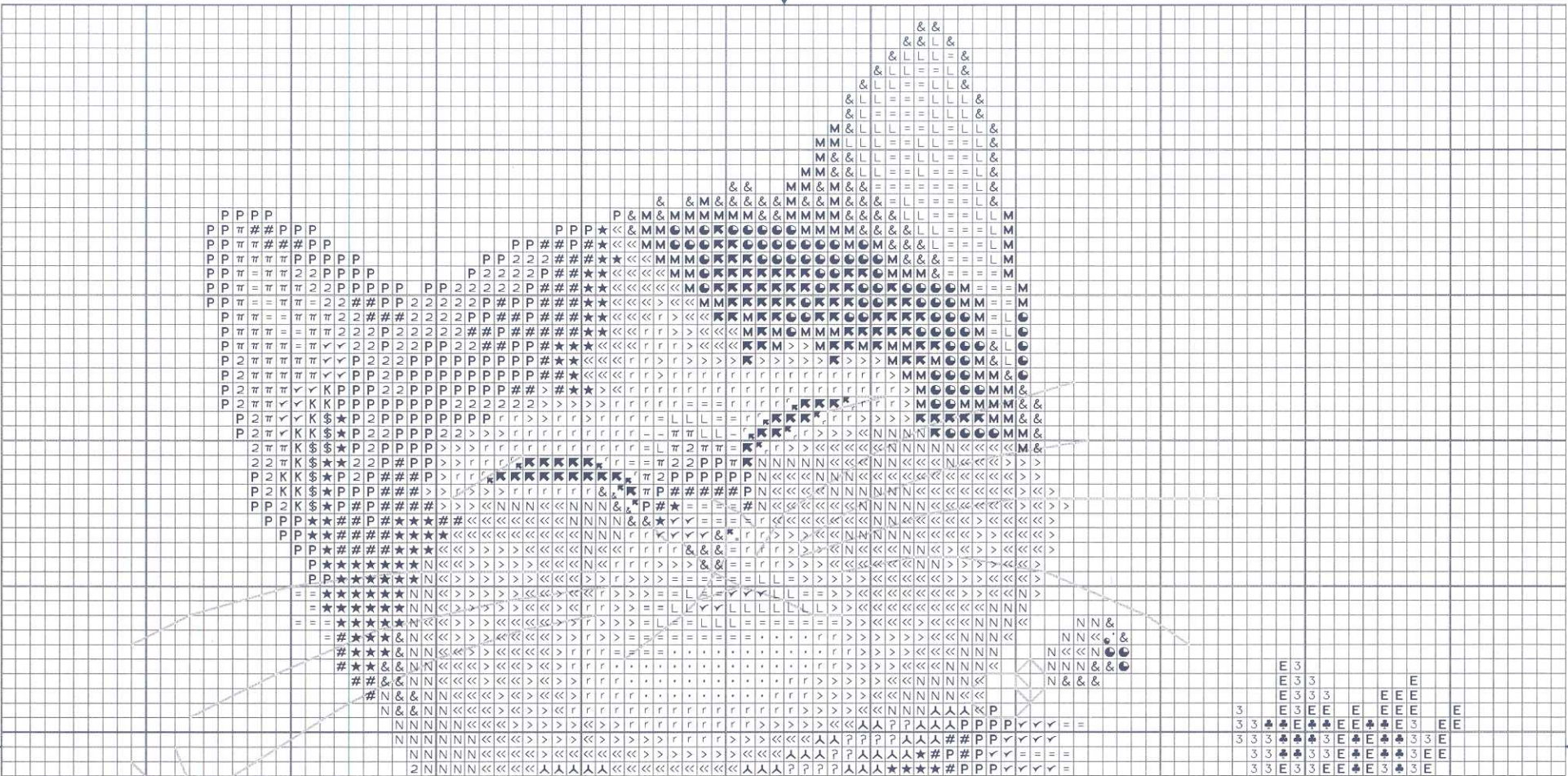
DISTRIBUTED BY:

ISLAND Art
www.islandart.com

CHART DESIGN BY:

The *Stitching Studio*

STUDIO ART
Needlework



Copyright 2004 ~ all rights reserved ~ Printed in Canada

Colour Key 2 strands DMC (for backstitches see page S1)

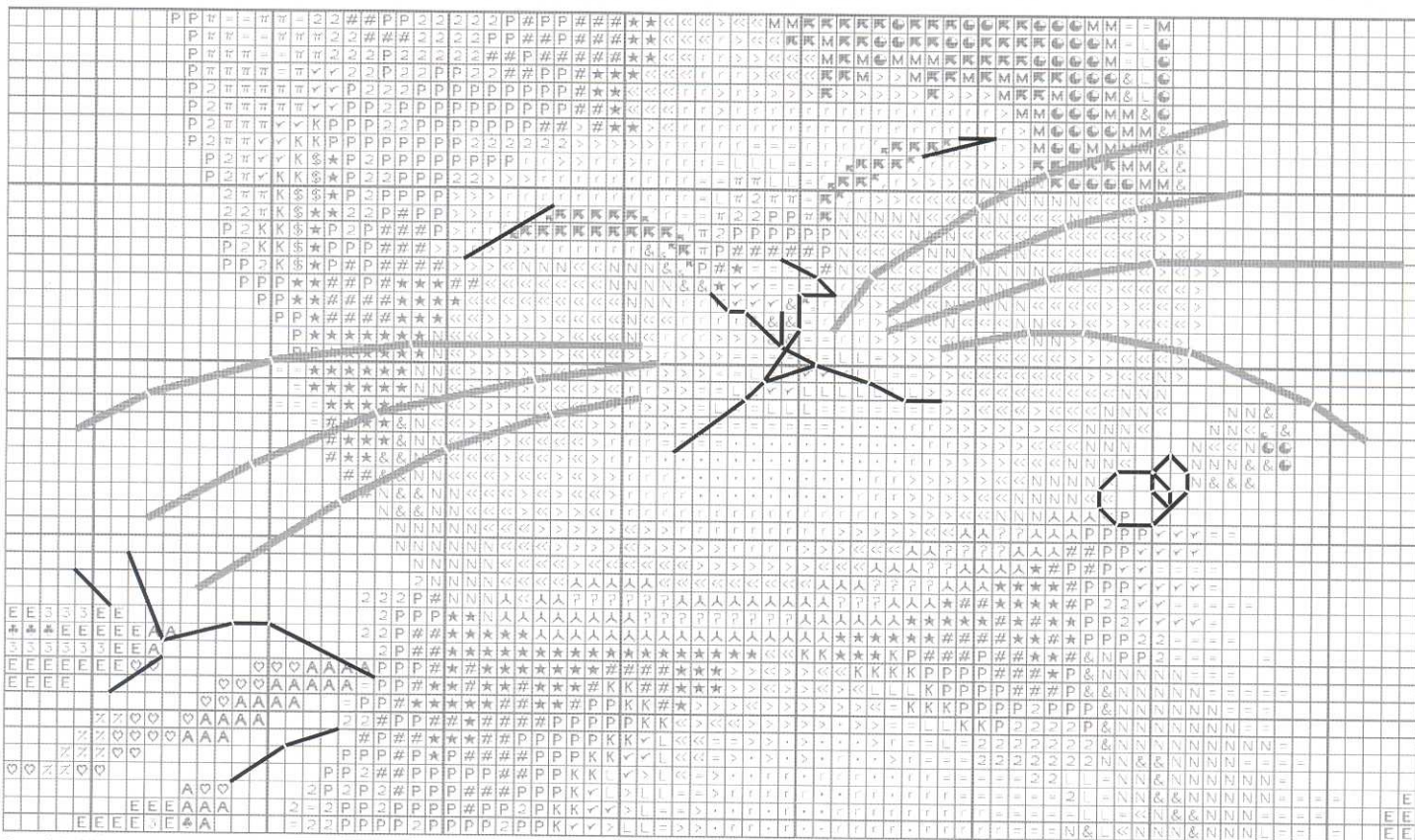
• White	N 318	\$ 434	L 738	∞ 3348
r White + 762	E 334	# 434 + 3826	= 739	3 3755
◀ 310	人 340	P 435 + 976	π 739 + 3827	M 3799
● 310 + 3799	? 341	K 436	> 762	
♣ 312	<< 415	✓ 437	A 987	
& 317 + 414	★ 433 + 975	2 437 + 3827	♥ 989	



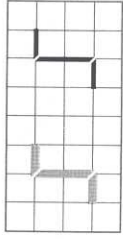
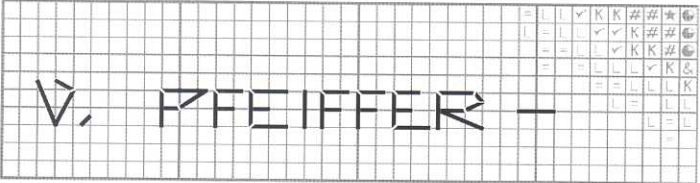
DISTRIBUTED BY:
ISLAND Art www.islandart.com

CHART DESIGN BY: *The Stitching Studio*

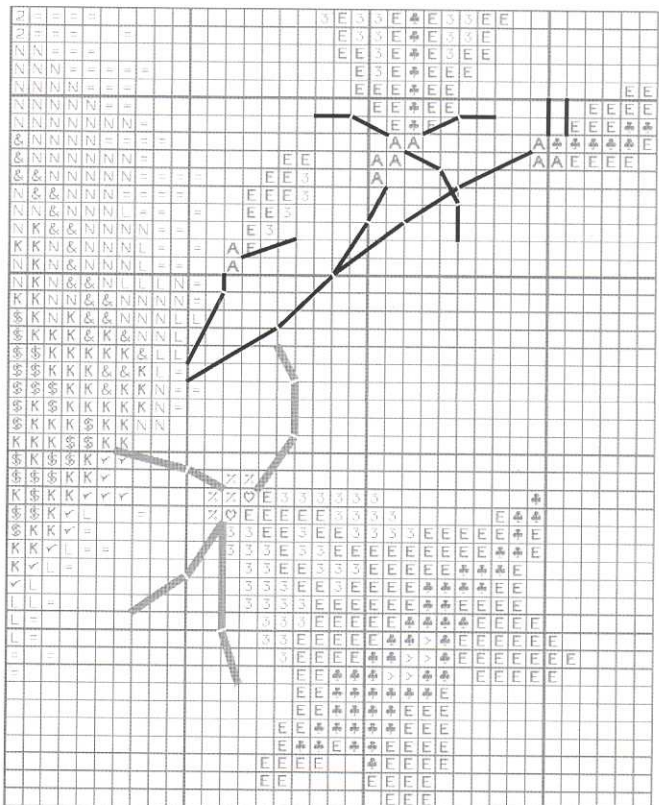
STUDIO ART Needlework



Copyright 2004 ~ all rights reserved ~ Printed in Canada



- 310** Mouth, nose & eyes 2 strands
- 317 + 414** Bell chain 1 strand each
- 987** Flower stems 2 strands
- 3799** Artist signature 1 strand
- 414** Whiskers 1 strand
- 434 + 987** Flower stems 1 strand each



DISTRIBUTED BY:
ISLAND Art
www.islandart.com

CHART DESIGN BY: *The Stitching Studio*

S1 Backstitches

BLUEBELL KITTEN

Adapted from the work of celebrated artist
Valerie Pfeiffer © 2004 all rights reserved



.	.		
r	r		
◀	◀		
◐	◐		
♣	♣		
&	&		
N	N		
E	E		
人	人		
?	?		
<<	<<		
★	★		
\$	\$		
#	#		
P	P		
K	K		

DMC 2 strands

- White**
- White + 762** one strand each
- 310** Black
- 310 + 3799** one strand each
- 312** Navy Blue light
- 317 + 414** one strand each
- 318** Steel Grey Light
- 334** Baby Blue medium
- 340** Blue Violet medium
- 341** Blue Violet light
- 415** Pearl Grey
- 433 + 975** one strand each
- 434** Brown light
- 434 + 3826** one strand each
- 435 + 976** one strand each
- 436** Tan

✓	✓		
2	2		
L	L		
=	=		
π	π		
>	>		
A	A		
♥	♥		
∕	∕		
3	3		
M	M		

DMC 2 strands

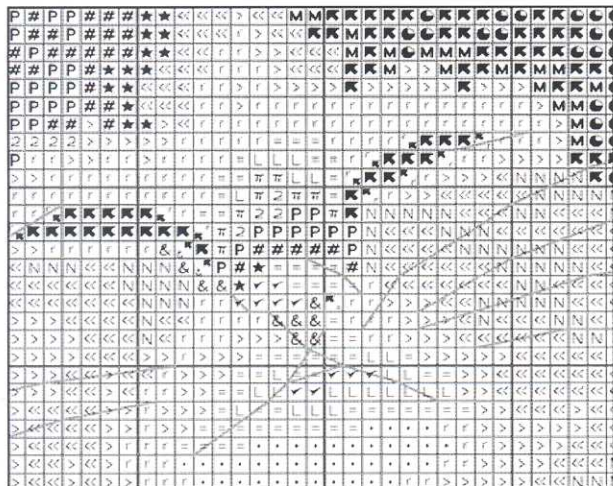
- 437** Tan light
- 437 + 3827** one strand each
- 738** Tan very light
- 739** Tan ultra very light
- 739 + 3827** one strand each
- 762** Pearl Grey very light
- 987** Forest Green dark
- 989** Forest Green
- 3348** Yellow Green light
- 3755** Baby Blue
- 3799** Pewter Grey very dark

Floss List	
1 skein unless noted	
6 strand DMC	
White	437
310	738 *
312 *	739
317	762
318	975 *
334	976 *
340 *	987 *
341 *	989 *
414 *	3348 *
415	3755 *
433 *	3799
434 *	3826 *
435	3827 *
436	

* indicates less than 1 yard (meter) required (1 skein = 8.7 yards)

BACKSTITCHES

- 310** Mouth, nose & eyes 1 strand
- 317 + 414** Bell chain 1 strand each
- 987** Flower stems 2 strands
- 3799** Artist signature 1 strand
- 414** Whiskers 1 strand
- 434 + 987** Flower stems 1 strand each



SAMPLE CHART DETAIL - ACTUAL SIZE

Chart includes a few 3/4 stitches around eyes and nose (see detail at left).

A small symbol in the corner of the square indicates a 3/4 stitch. Two symbols indicate two 3/4 stitches (example).

Use Pages 1 & 2 to stitch full and 3/4 stitches, then use Page S1 to add backstitch lines.

Stitched on Zweigart 32 Count
"Antique White" Belfast Linen (over 2)
Design Area 6.6" by 6.3"
Stitch Count 106 x 100