



10

20

30

40

50

60

70

80

Cat in the window chart (bottom)

Cat in the window key

✦ Cross stitch in two strands

	Anchor	DMC	Madeira	
○	2	blanc	2402	white
A	24	3713	502	light pink
w	55	603	609	pink
♥	63	3804	704	dark pink
♥	65	3685	2608	very dark pink
I	85	3609	710	light lilac
e	98	553	712	mauve
e	112	3837	713	dark purple
*	117	341	907	light lavender
▼	227	910	1302	dark green
■	235	414	1707	grey
\$	253	472	1414	light green
▽	255	704	1308	green
•	271	819	814	very light pink
☉	293	121	110	light yellow
♀	297	973	106	yellow
●	311	3827	2012	sand
b	349	301	2010	copper
o	358	801	1913	brown
■	381	938	2003	dark brown
s	386	746	2511	very light yellow
K	387	ecru	2404	cream
N	1002	977	2513	ginger
+	1030	3746	902	purple
℄	1031	775	1014	light blue
t	1032	3753	1001	blue
P	1037	3756	1804	very light blue

✦ Backstitch in one strand

—	65	3685	2608	very dark pink
—	112	3837	713	dark purple
—	218	319	1313	very dark green
—	235	414	1707	grey
—	381	938	2003	dark brown

✦ French knots in one strand

●	381	938	2003	dark brown
---	-----	-----	------	------------

STITCH COUNT 160 high x 120 wide

DESIGN AREA 14 HPI (28-count evenweave) – 29x22cm (11½x8½in)

This design was stitched using Anchor stranded cotton

▶ Shopping list

YOU WILL NEED

- ✦ A piece of 14-count white aida measuring 40x33cm (16x13in)
- ✦ Stranded cotton as listed in the key
- ✦ Size 24 tapestry needle
- ✦ Frame of your choice with a minimum aperture of 30x22cm (12¼x8½in)

Thread & fabric cost

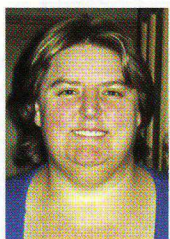
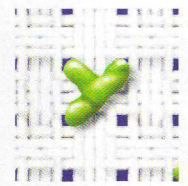
Approximately £25

tip

It's easy to distort your fabric when stitching a dense design like this – so keep an even tension by using an embroidery hoop

How to work fractional stitches on aida

We've worked this design on aida to make it faster to finish, but there are fractional stitches in the characters' features and in the brackets of the window box. You'll need to take your needle down through the centre of the aida block to make these stitches. If you don't like stitching these, why not work the design on 28-count evenweave instead?



▶ Reader panel

Michelle: I really love cats. I have a black cat so when I get around to stitching this I may change the colours so that the kitty is black, rather than ginger. What a truly lovely design, though.