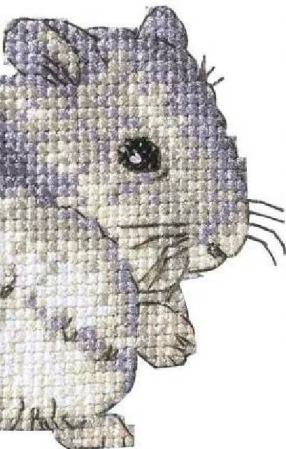


TOP TIP
Use a sharp needle for the backstitch and make each stitch precisely to ensure a neat, crisp finish

Great shading!

Factbox

- ✦ **Stitching Time**
Approx. 10 hours
- ✦ **Type of Stitches**
Cross stitch, fractionals, backstitch, French knots
- ✦ **Ease of Stitching**
Beginner



Chinese Dwarf Hamster key

✦ **Cross stitch in two strands**

	DMC	Anchor	Madeira	
s	ecru	926	2404	cream
■	310	403	2400	black
e	318	399	1801	light grey
◐	341	117	901	violet
◑	414	235	1714	grey
N	648	900	1814	stone grey
A	3774	778	306	peach
∩	3865	2	2403	natural white

✦ **Backstitch in one strand**

—	844	1041	1809	dark grey
---	-----	------	------	-----------

✦ **French knots in one strand**

○	B5200	1	2401	white
---	-------	---	------	-------

STITCH COUNT 43 high x 45 wide

DESIGN AREA 14 HPI (28-count evenweave) – 7.5x8cm (3x3¼in)

This design was stitched using DMC stranded cotton