

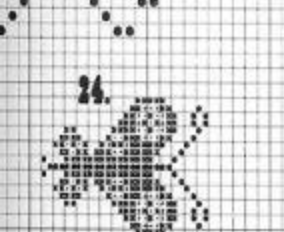
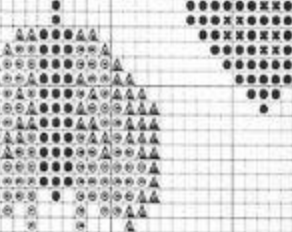
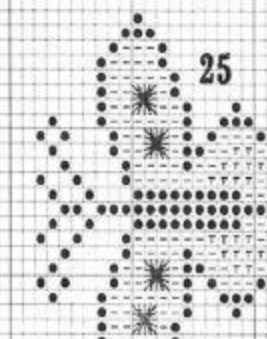
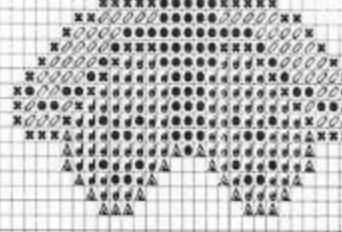
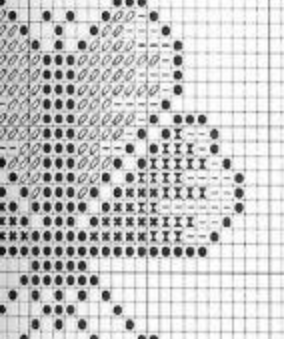
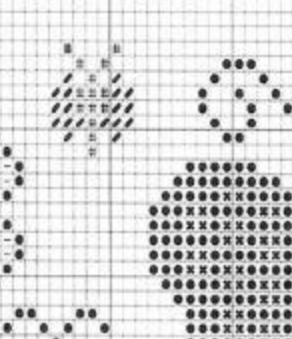
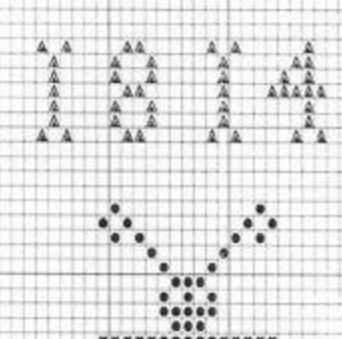
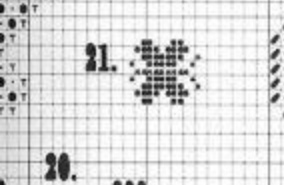
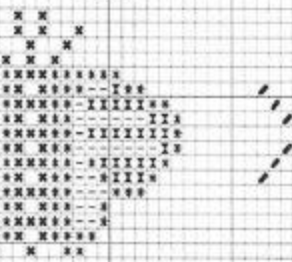
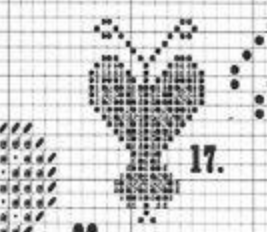
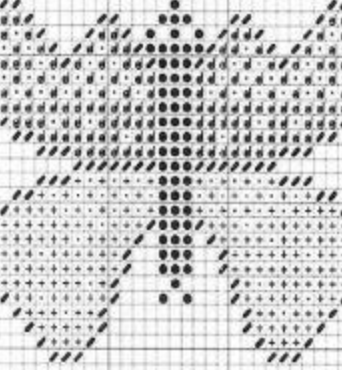
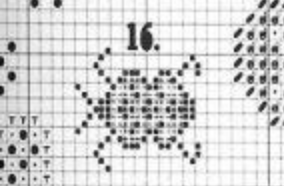
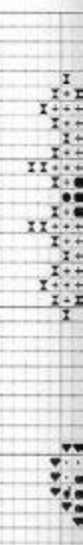
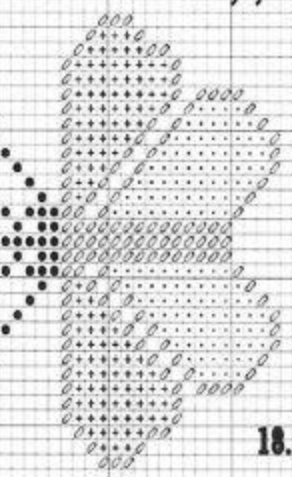
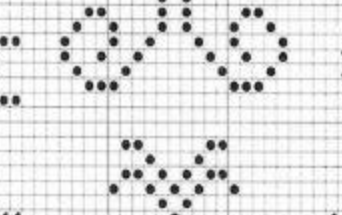
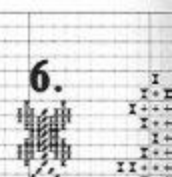
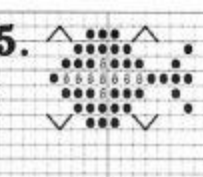
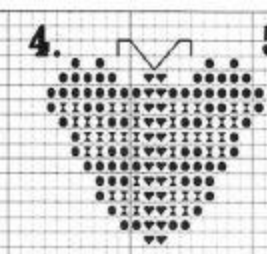
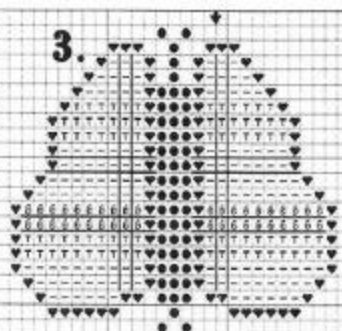
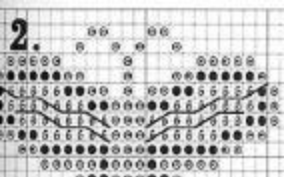
# 1814 Butterfly Collection



# Carriage House Samplings

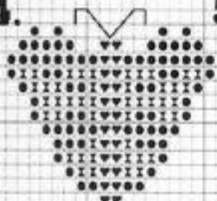
4305 Hanover Pike Manchester MD 21102

410-374-8162

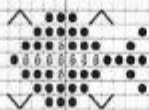




4.



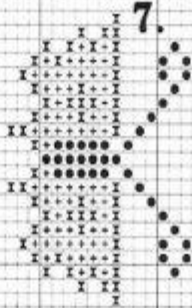
5.



6.



7.



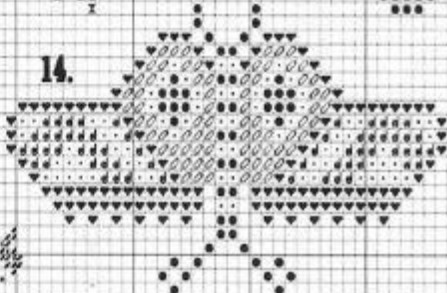
8.



13.



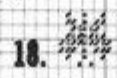
14.



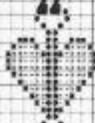
17.



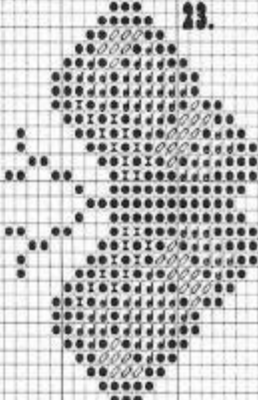
18.



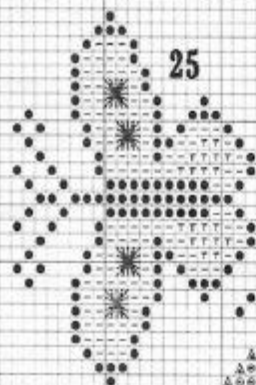
22.



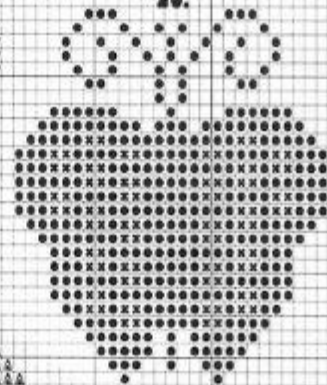
23.



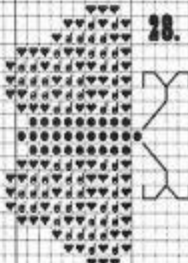
25.



26.



28.



27.



# 1814 Butterfly Collection

Our sampler was worked on R&R Reproduction's Barrick's Blend, which is a 32/36 Count uneven weave linen. Au Ver A Soie's Soie D'Alger and Soie de Paris were used. All cross stitching over two threads is done with two strands of silk. All cross stitching over one thread is done with one strand of silk. Stitch Count: 196W x 101H

When using an uneven weave linen, the selvage edge should be on the side so that your stitches are taller than they are wide.

Two skeins of Au Ver A Soie's Soie de Paris were used - 1442 and Noir. This is entirely optional, but when used for accent stitches, adds a soft shine to your work.

## Special Instructions:

1. Use satin stitch with two strands of silk to work sections 3412/3782 and 3346/3032. And, use two strands of Noir/310 to backstitch the antenna.
2. Work backstitching with one strand of Noir/310.
3. Work backstitching with one strand of 3346/3032.
4. Use satin stitch with two strands of silk to work sections 1445/597. Use two strands of 3346/3032 to backstitch antenna.
5. Use two strands of Noir/310 to backstitch legs.
- 6., 10., 13., 16., 17., 18., 21., 22., 24. Cross stitch over one with one strand of silk.
7. Use two strands of Soie de Paris in Noir/310 sections.
8. Use two strands of Soie de Paris in Satin Stitch to work 1442/3811 sections.
9. Use one strand of Noir/310 to work all backstitching.
11. Use two strands of Soie de Paris in Satin stitch to work 1442/3811 sections.
12. Use two strands of silk to satin stitch brut/ecru sections.
14. Use two strands of Soie de Paris in Satin Stitch to work 1442/3811 sections. Use one strand of Soie de Paris in Noir to work center sections of inner wings using an elongated eyelet stitch.
15. Use two strands of Noir/310 to satin stitch horizontal rows in this section, covering two threads of linen with each row.
19. Use Soie de Paris to cross stitch center portions and to satin stitch center medallion sections in Noir/310.
20. Use horizontal satin stitches in all 1445/597 sections and all brut/ecru sections.
23. Use two strands of Soie de Paris to work horizontal satin stitches in all 1442/3811 sections.
25. Work four 3412/3782 sections in front wings with one strand of silk using an eyelet stitch. Outline these stitches with one strand of Noir/310.
26. Cross stitch all Noir/310 sections with two strands of Soie de Paris. Use vertical satin stitches with two strands of silk in all 1446/3810 sections.
27. Use two strands of Noir/310 to backstitch legs.
28. Use two strands of Noir/310 to backstitch antenna. Use two strands of Soie de Paris to work horizontal satin stitches in all 1442/3811 sections.

# 1814 Butterfly Collection

## Floss List:

Symbol	Soie D'Alger	D.M.C.	Color
.	Blanc	White	White
●	Noir*	Black	Black
◎	4526	420	Nut Brown, Medium
*	4523	422	Nut Brown, Light
⌘	1445	597	Turquoise, Med. Dark
○	1444	598	Turquoise, Dark
♣	4122	869	Nut Brown, Dark
♥	3346	3032	Brown/Gray
#	3816	3045	Gold, Very Dark
△	3815	3046	Gold
+	3821	3047	Gold, Very Light
T	3412	3782	Brown/Gray, Very Light
✕	1446	3810	Turquoise, Very Dark
⊙	1442*	3811	Turquoise, Very Light
6	4513	3828	Golden Brown
-	Brut	Ecreu	Ecreu



\*Both Soie D'Alger and Soie de Paris are used for Noir and 1442.

## Sources:

The linen is available from *R&R Reproductions*, 5386 Kemps River Drive, Suite 108-6, Virginia Beach VA 23464 757-474-9660.

The Perle Soie silk is available from *Access Commodities*, P.O. Box 1355, Terrell TX 75160 972-563-3313.

The frame is available from *Old Colonial Designs*, P.O. Box 704, Marshfield MA 02050 781-826-3447.  
Moulding #PR3001, FO 11 3/8 x 6 7/8.

Please visit our website at [www.shopworks.com/samplers](http://www.shopworks.com/samplers).



Kathy Barrick-Dieter, 4305 Hanover Pike, Manchester MD 21102 410-374-8162 E-mail: kbdieter@aol.com