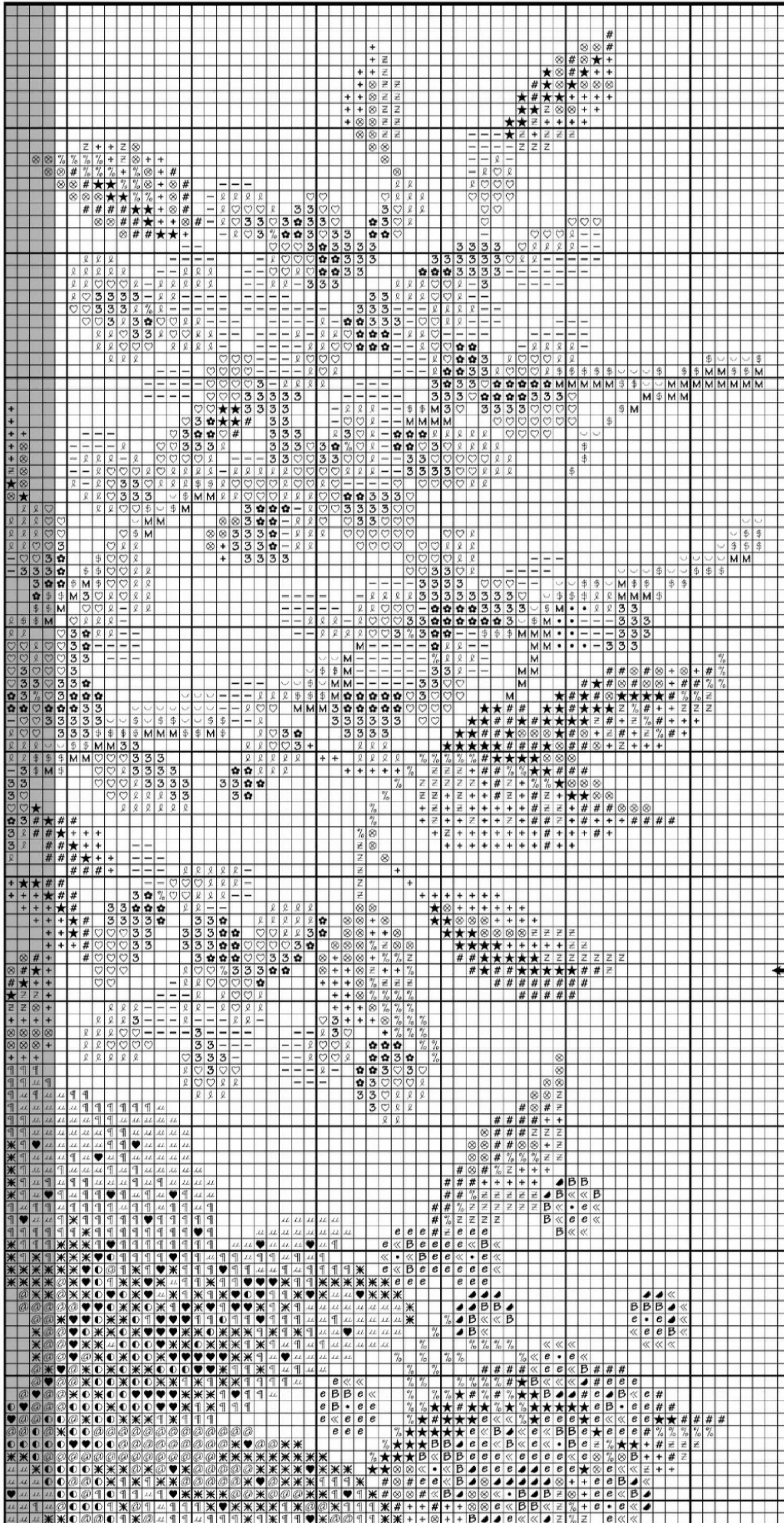


Shaded portion indicates overlap from previous page.



Shaded portion indicates overlap from previous page.



Bluebirds

Designs by Marie Barber

Skill level: Intermediate

Materials

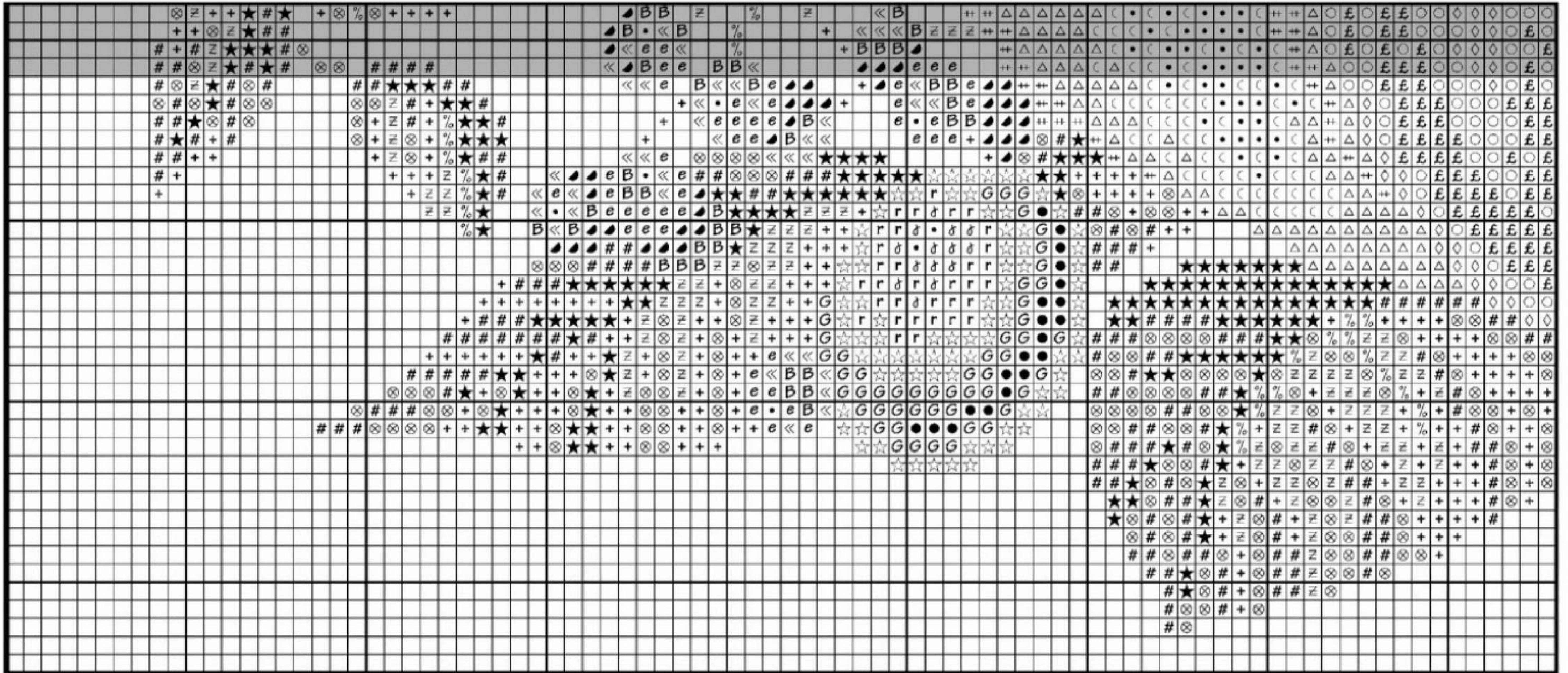
- 16" x 20" piece 32-count lambswool linen from Wichelt Imports Inc.*
- One skein each DMC® or Sullivans® USA six-strand embroidery floss**
- Size 24 tapestry needle
- Professionally framed*

*See "Where to Find It" on page 74.

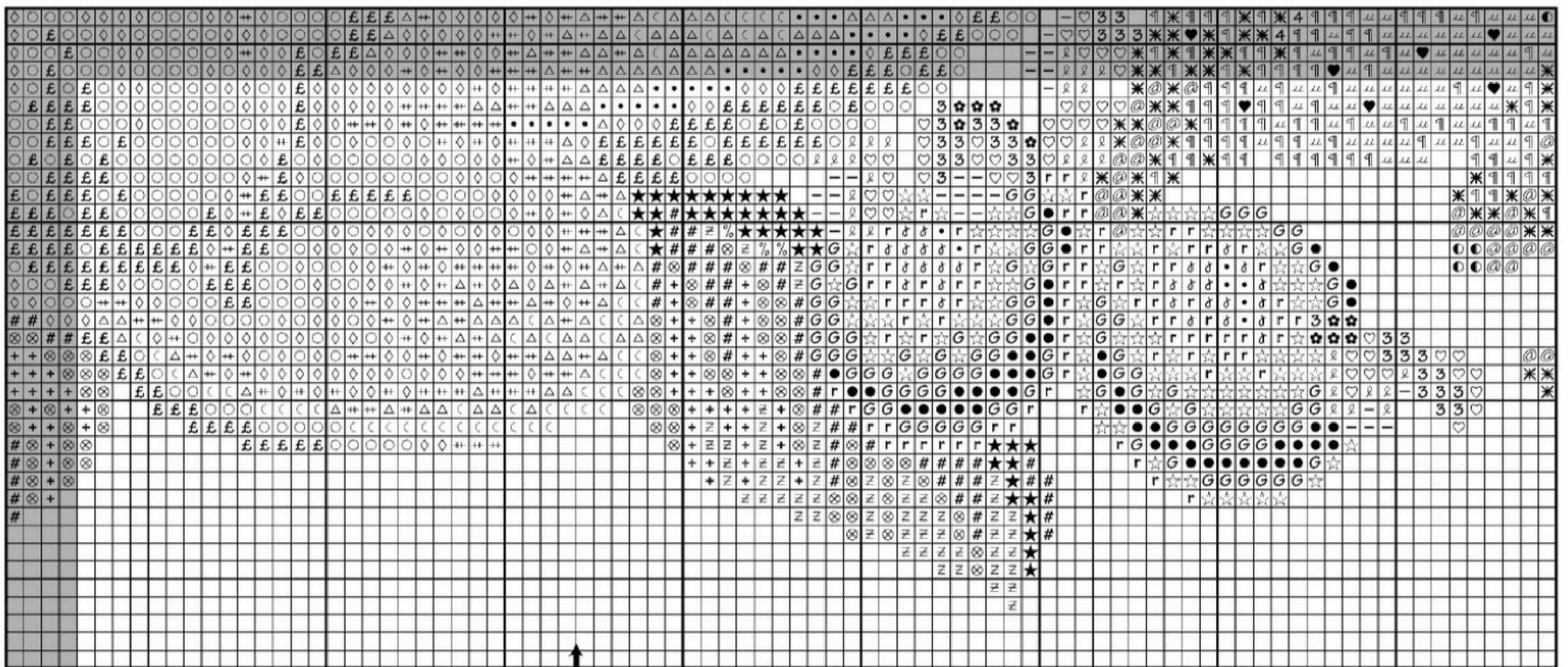
**Refer to color code.

	DMC®	Sullivans®	
\$	3862	45460	mocha beige, dk.
M	3031	45323	mocha brown, vy. dk.
- [3865	45463	winter white
	605	45140	cranberry, vy. lt.
ℓ	605	45140	cranberry, vy. lt.
♡	603	45138	cranberry
3	600	45135	cranberry, vy. dk.
✿	150	45465	dusty rose, ul. vy. dk.
++ [644	45150	beige gray, med.
	761	45192	salmon, lt.
◇ [3689	45358	mauve, lt.
	604	45139	cranberry, lt.
○	3806	45403	cyclamen pink, lt.
£ [3041	45326	antique violet, med.
	3805	45402	cyclamen pink
e	3716	45364	dusty rose, vy. lt.
« [962	45296	dusty rose, med.
	3832	45430	raspberry, med.
B	3831	45429	raspberry, dk.
♣	777	45492	raspberry, vy. dk.
¢	648	45154	beaver gray, lt.
+	645	45151	beaver gray, vy. dk.
@	347	45072	salmon, vy. dk.
●	221	45044	shell pink, vy. dk.
4	3858	45456	rosewood, med.
♥	3857	45455	rosewood, dk.
♠	3689	45358	mauve, lt.
r	3836	45434	grape, lt.
☆	3835	45433	grape, med.
G	3834	45432	grape, dk.
• [154	45469	grape, vy. dk.
	310	45053	black
■	310	45053	black
%	834	45235	golden olive, vy. lt.
z	733	45177	olive green, med.
+	734	45178	olive green, lt.
⊗	730	45174	olive green, vy. dk.
#	936	45278	avocado green, vy. dk.

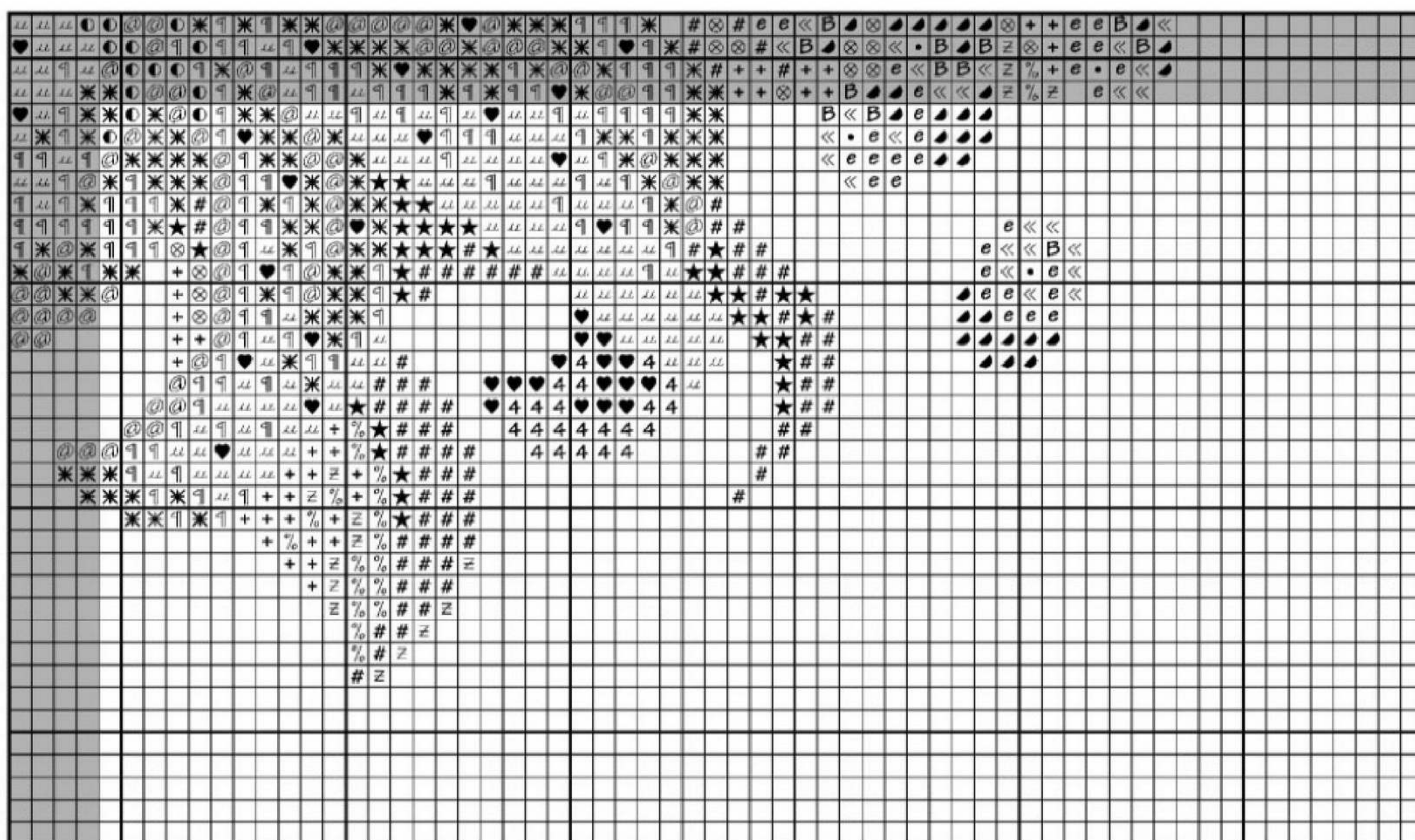
Shaded portion indicates overlap from page 59.



Shaded portion indicates overlap from page 60 and above.



Shaded portion indicates overlap from page 61 and above.



★	934	45276	black avocado green
∩	3864	45462	mocha beige, lt.
~	828	45229	blue, ul. vy. lt.
/	519	45116	sky blue
X	518	45115	wedgwood, lt.
::	3842	45440	wedgwood, dk.
⌞	3842	45440	wedgwood, dk.
	310	45053	black
•	B5200	45002	snow white
⌞	3865	45463	winter white
	ecru	45000	ecru
△	822	45223	beige gray, lt.
⌞	644	45150	beige gray, med.
	642	45149	beige gray, dk.
a	3823	45420	yellow, ul. pl.
∕	3855	45453	autumn gold, lt.
¥	3854	45452	autumn gold, med.
×	3853	45451	autumn gold, dk.
⊙	3853	45451	autumn gold, dk.
	920	45266	copper, med.
⌞	3856	45454	mahogany, ul. vy. lt.
	722	45169	orange spice, lt.
¶	721	45168	orange spice, med.
✱	900	45251	burnt orange, dk.

Stitch count: 151H x 224W

Design size: 9½" x 14"

Instructions: Cross stitch over two threads using two strands of floss. When two colors are bracketed together use one strand of each color.

Stitched by Sandra Truman 

