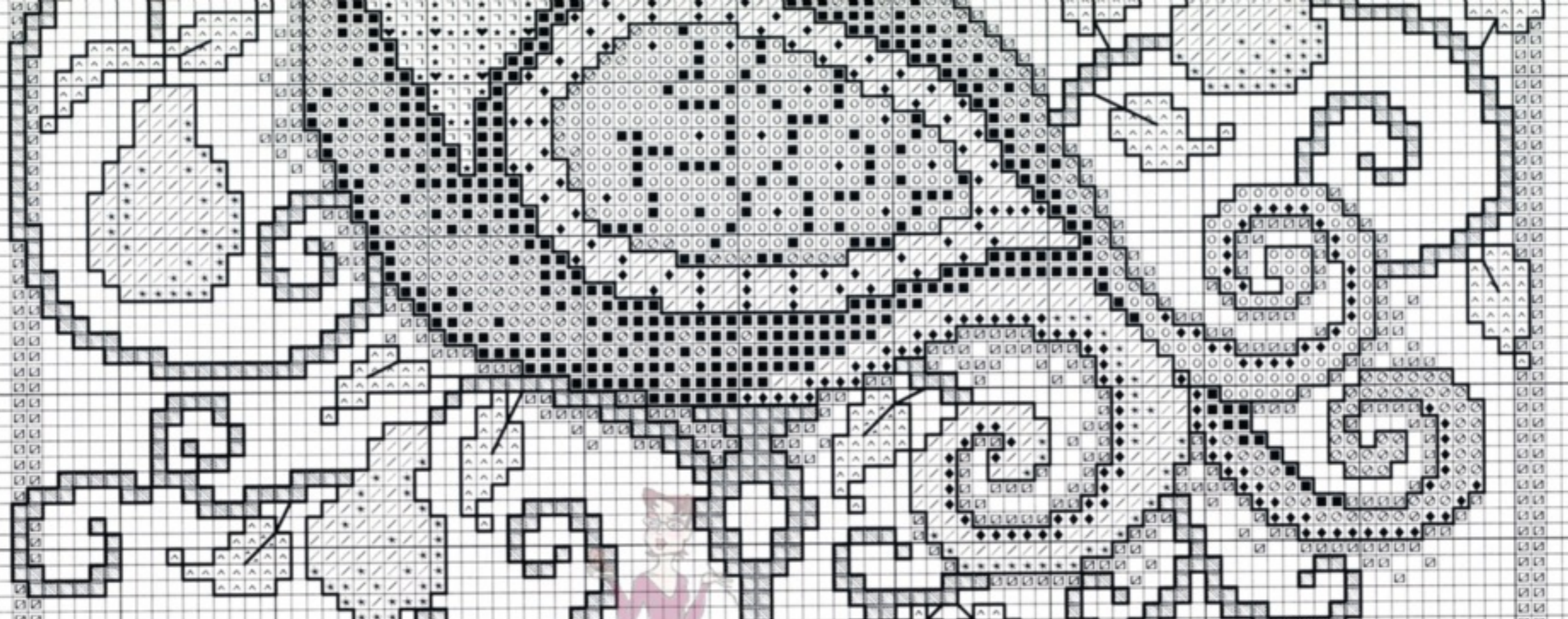
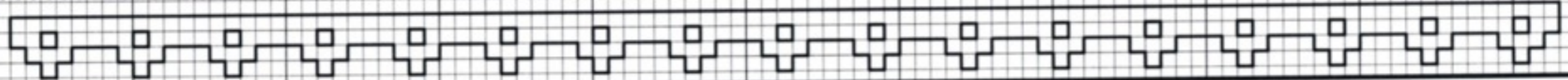




If you don't have it, you will never find it



If you don't have Christmas in your heart
you will never find it under the tree



2698
CHRISTMAS IN YOUR HEART
Designed by Diane Arthurs

FLOSS USAGE

- Use 2 plies for all cross stitches.
- Use 1 ply for all backstitches.
- Sometimes a backstitch will go over a cross stitch. We have made two small symbols on either side of the backstitch so that you might see the symbol easier. Complete your cross stitch first, then stitch the backstitch.
- One color is used for backstitch only and does not have a symbol.

Model stitched on
#14 White Aida

Design Size
103h x 137v

Approximate Design Size

#14 - 7 1/2" x 10"
#18 - 5 3/4" x 7 3/4"



SYMBOL	DMC#	COLOR
•		White
★	321	Red
⊙	434	Light Brown
▨	730	Very Dark Olive Green
*	782	Dark Topaz
♥	814	Dark Garnet
∩	922	Light Copper
	3024	Very Light Brown Grey
■	3031	Very Dark Mocha Brown
^	3346	Hunter Green
◆	3371	Black Brown
◇	3782	Light Mocha Brown
	3808	Ultra Very Dark Turquoise
■	3809	Very Dark Turquoise
/	3820	Dark Straw
○	3828	Hazelnut Brown
⊠	3849	Light Teal Green

KEY FOR BACKSTITCHES - 1 ply

- Top and bottom border - 3808 - Ultra Very Dark Turquoise
- All other backstitches - 3371 - Black Brown

KEY FOR FRENCH KNOTS

- 1 ply wrapped once or twice around needle**
- With words - 3371 - Black Brown

©2010 Imaginating, Inc.
Made and Printed in the USA