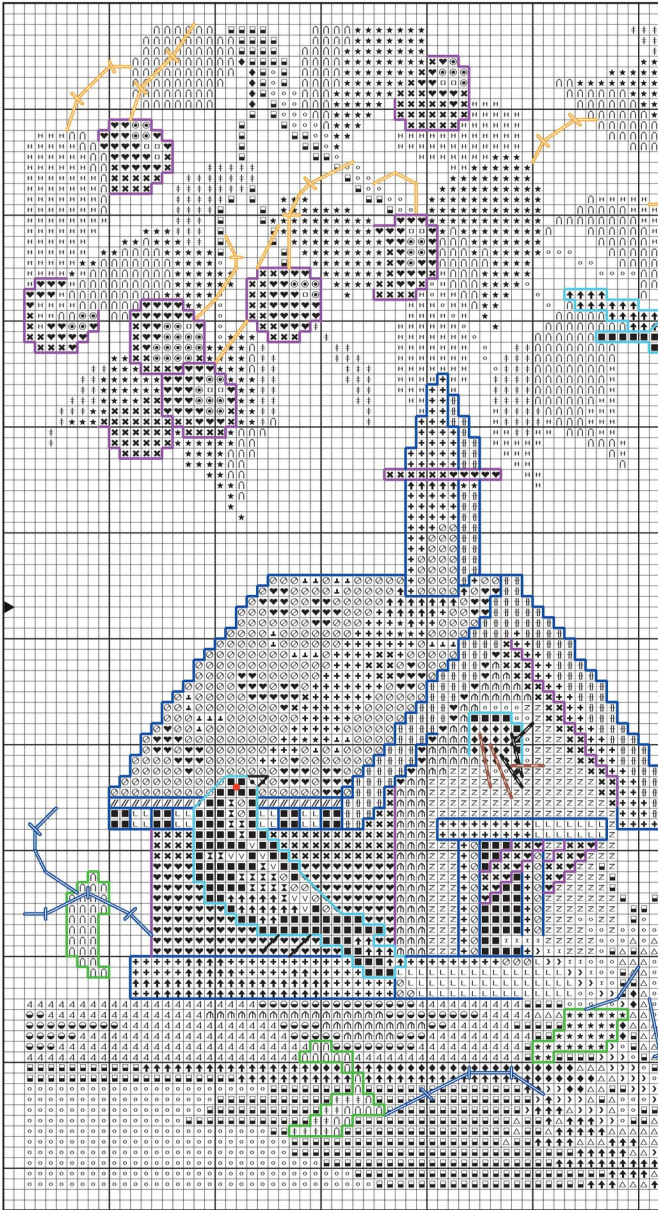
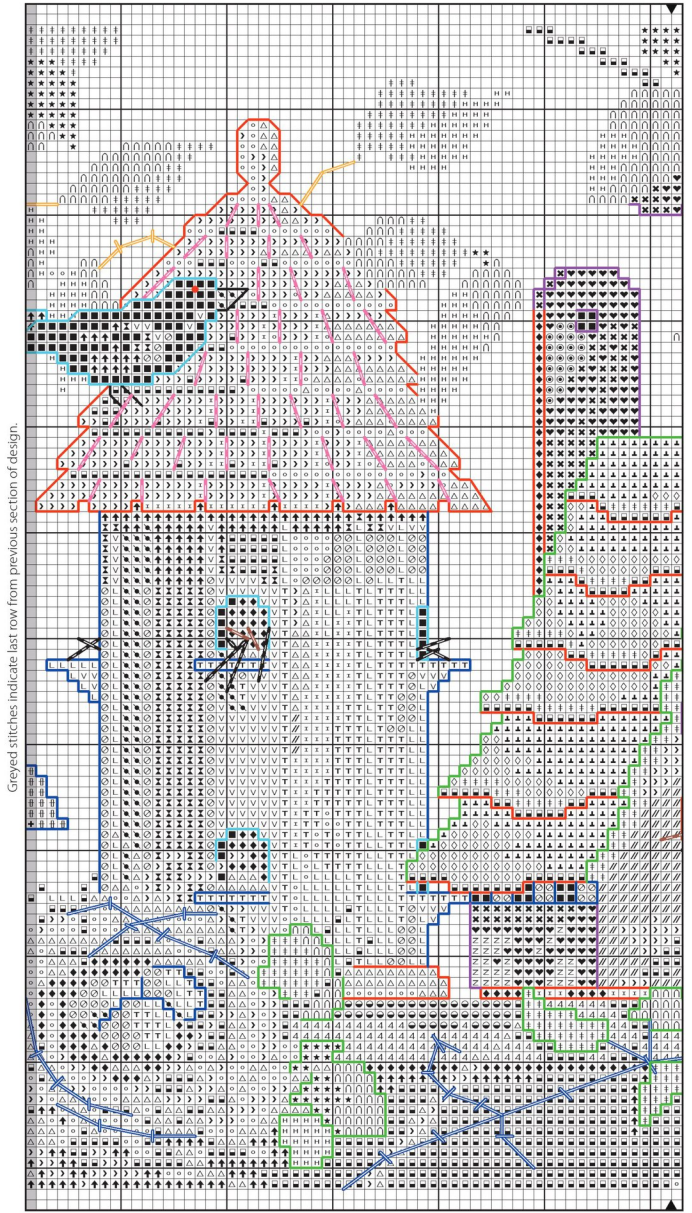


Left

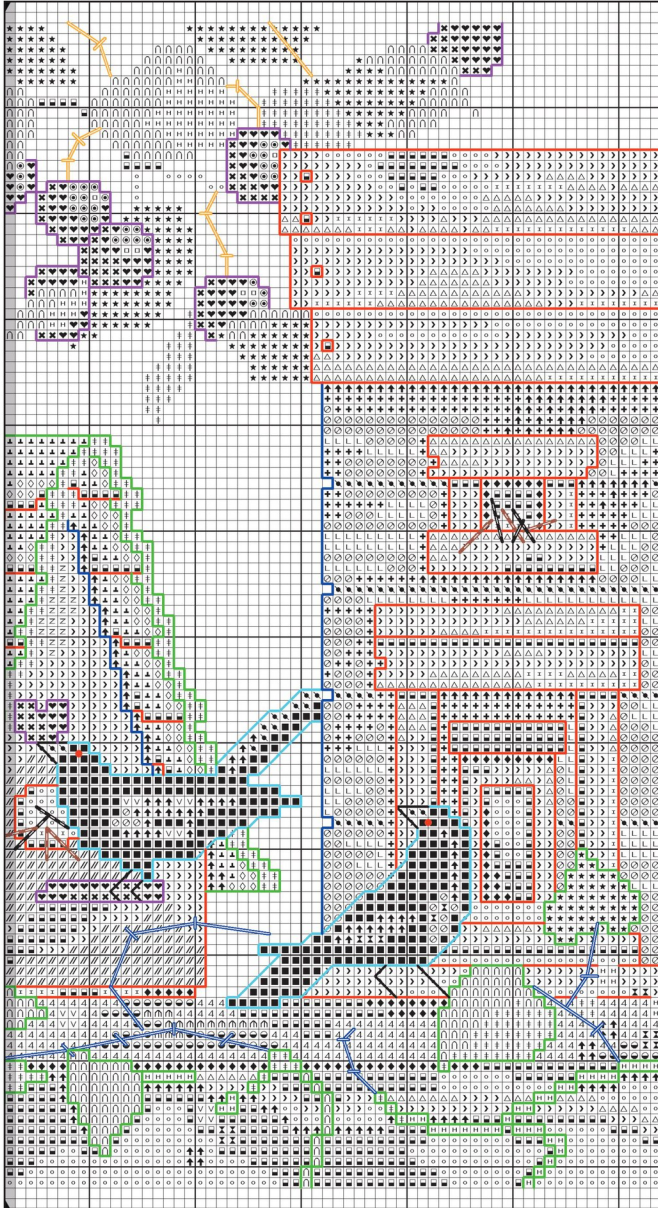




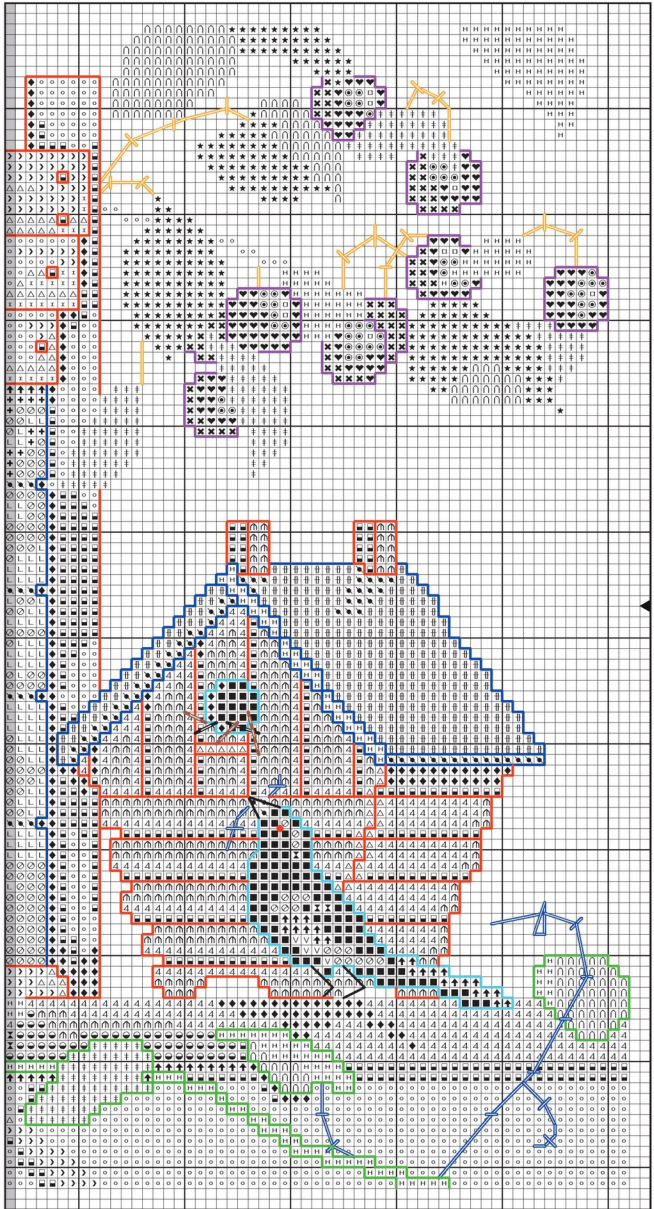
Greyed stitches indicate last row from previous section of design.



Right center



Greyed stitches indicate last row from previous section of design.



Greyed stitches indicate last row from previous section of design.

# Birdhouse

## Neighborhood

### Design Information

Design stitched on 14-count ivory Aida using 3 strands for Cross Stitch, 1 & 2 strands for Straight Stitch, 1 & 2 strands for Backstitch, 1 strand for French Knots, and 2 strands for Couching.

### Stitch Count

240w X 110h in stitches

### Design Size

17<sup>3</sup>/<sub>8</sub>w X 8<sup>1</sup>/<sub>8</sub>h inches on 14-count fabric

Add 4–6 inches to each measurement for cut fabric size.

DMC X	BS	Str	FK	Cg	DMC	X	BS	Str	FK	Cg
153	∇				816	⊗	■			
304	♥				839	■				
310	■	■			841*	○			■	
310*		■			930	↑		■		
350	◎				931	↙				
368	∩				959	⊕				
369	H				977	▶				
400	☉				986	↓				
472	⊕			■	3363	★	■			■
553	⊗				3371	◆	■	■		■
704	◇				3756	T				
738*	△		■		3776	4				
746	⊕			■	3826	⌒				
775	L				3854	⊥				
794	◎				3855	∥				
798	+				Blanc	□				●

\* Use 2 strands for Backstitch and Straight Stitch.

