

xxx Kit Point de Croix Compté xxx

Counted Cross-Stitch Kit / Kreuzstichzählmuster Fixpackungen

Les Gallinacés

Gallinacean

Gallinacés assez câlins



Limousin

Poule mouillée

Qu premier chant du coq



Chanteclerc

Le coq du village

Quand les poules auront des dents



Marans



Houdan

Gâtinaise et Faverolles

Tuer la poule aux œufs d'or



Bourbonnaise

Sauter du coq à l'âne



Bresse noire

Pied de poule

La chair de poule



Combattant



Coucou de Rennes



Poule commune

Rouge comme un coq



Gaulois

*Une poule sur un mur
Qui picorait du pain dur,
Picoti, picota ...*



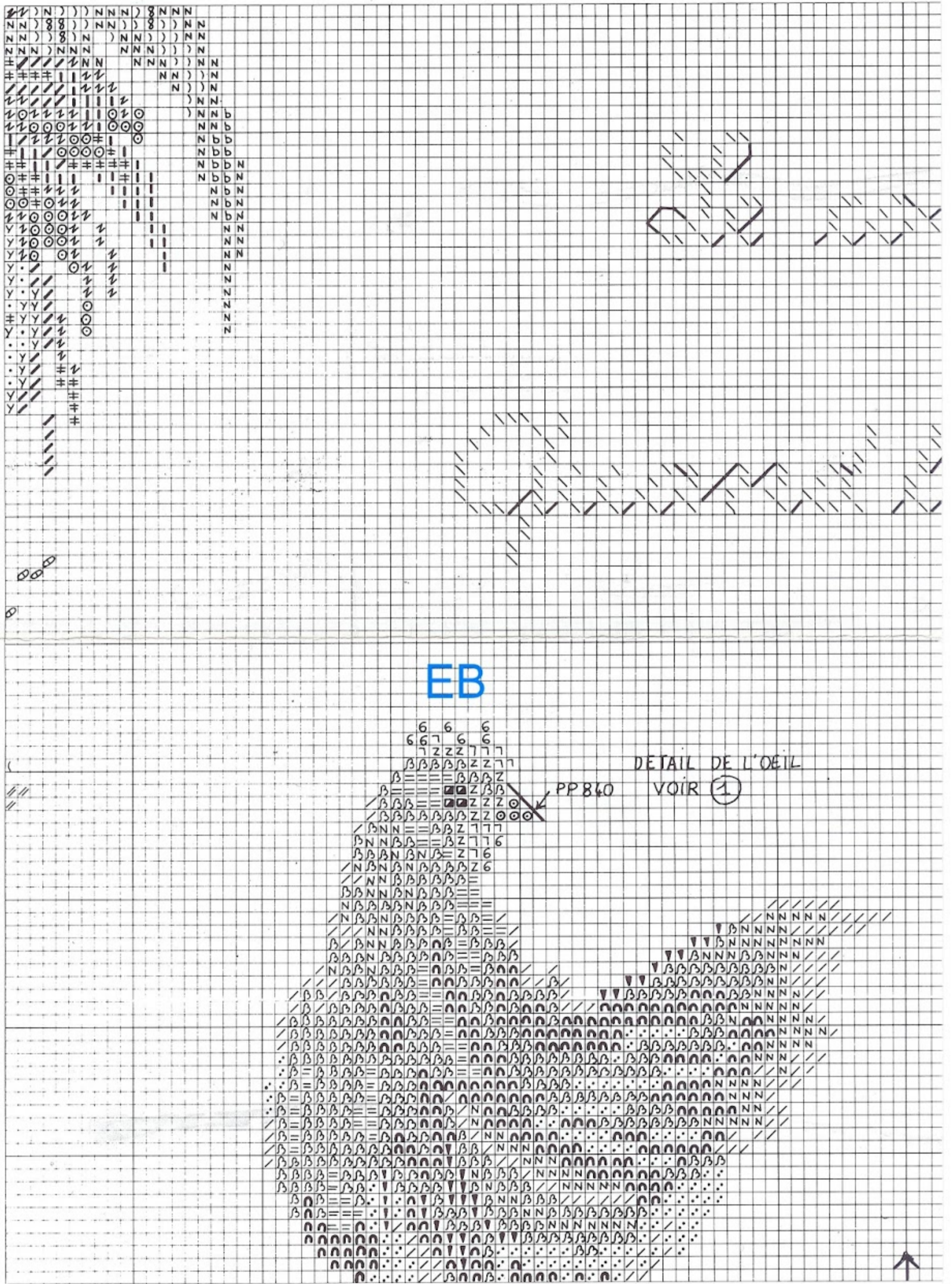
Orpington

Collection

Terroir - Country

31 x 33,5 cm - 12 1/4 x 13 1/4 "

XC0190



7
 Creation : Marie Therèse Saint Aubin pour DMC.



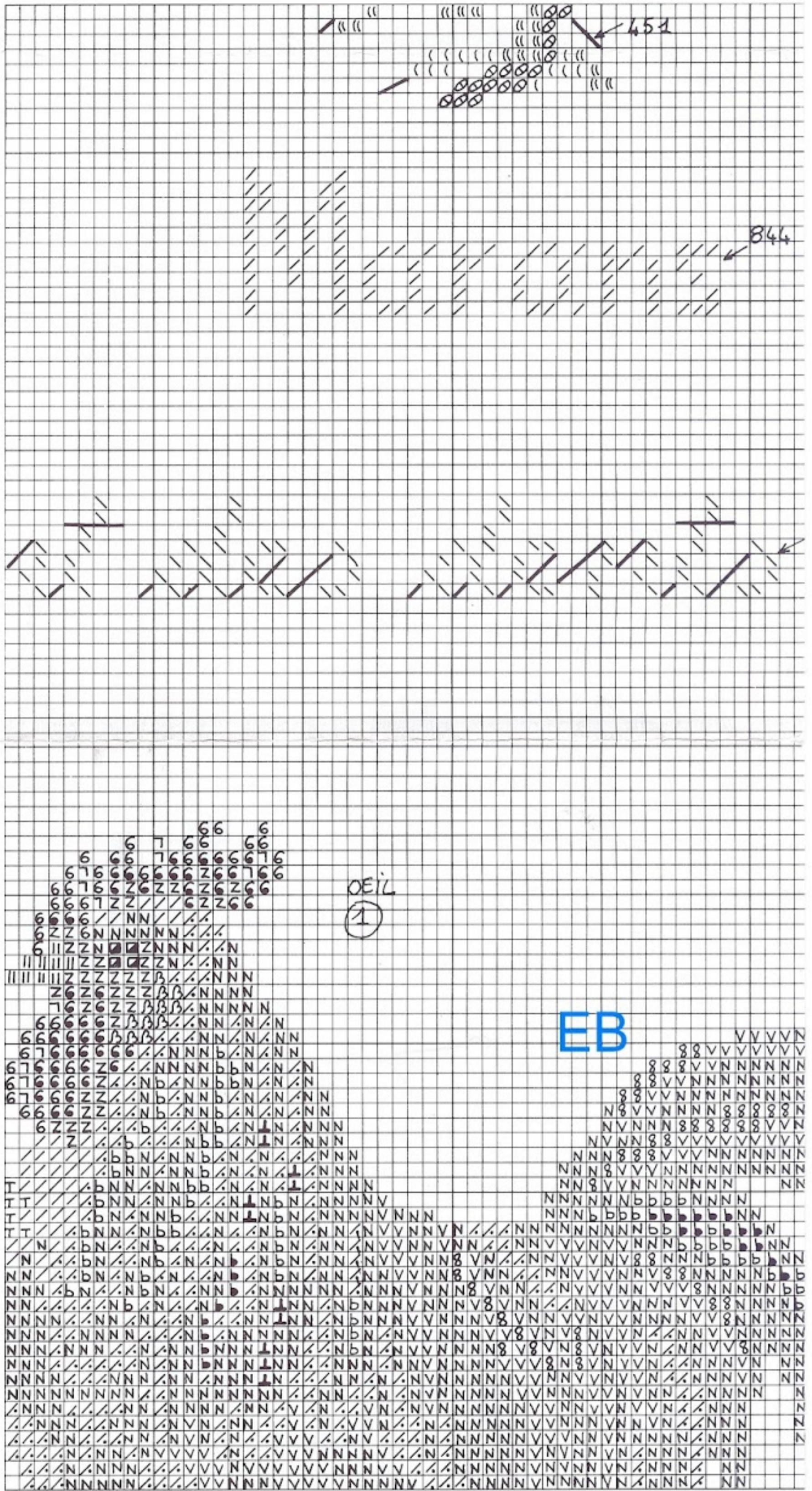
Les gallinacés / Gallinacean

XC0190



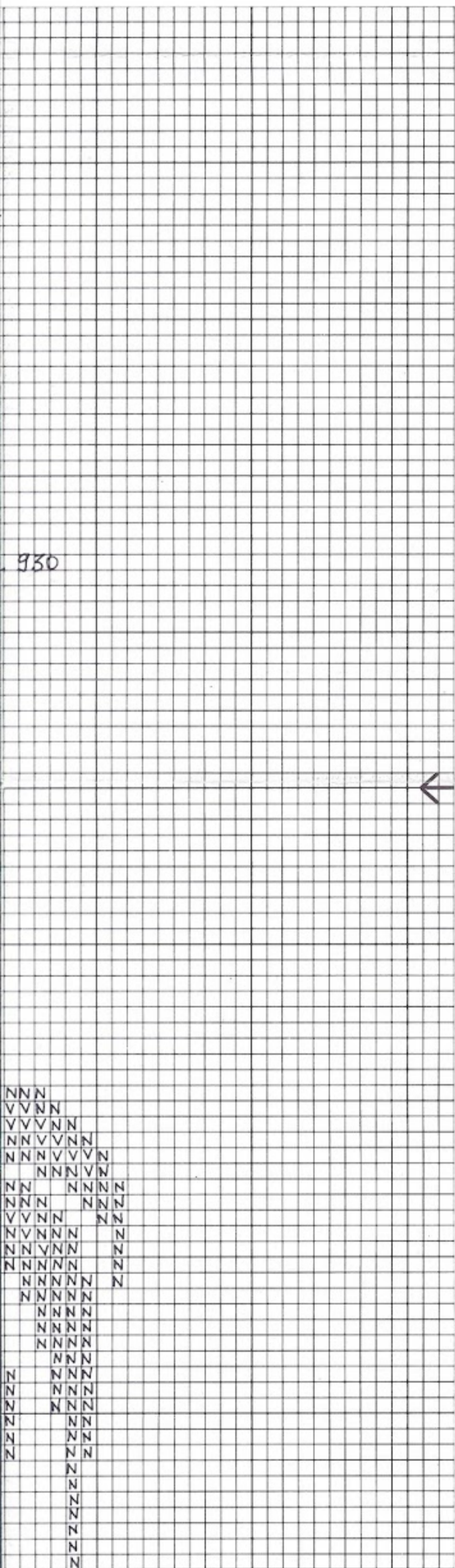
Création : Marie Thérèse Saint Aubin pour DMC.

8

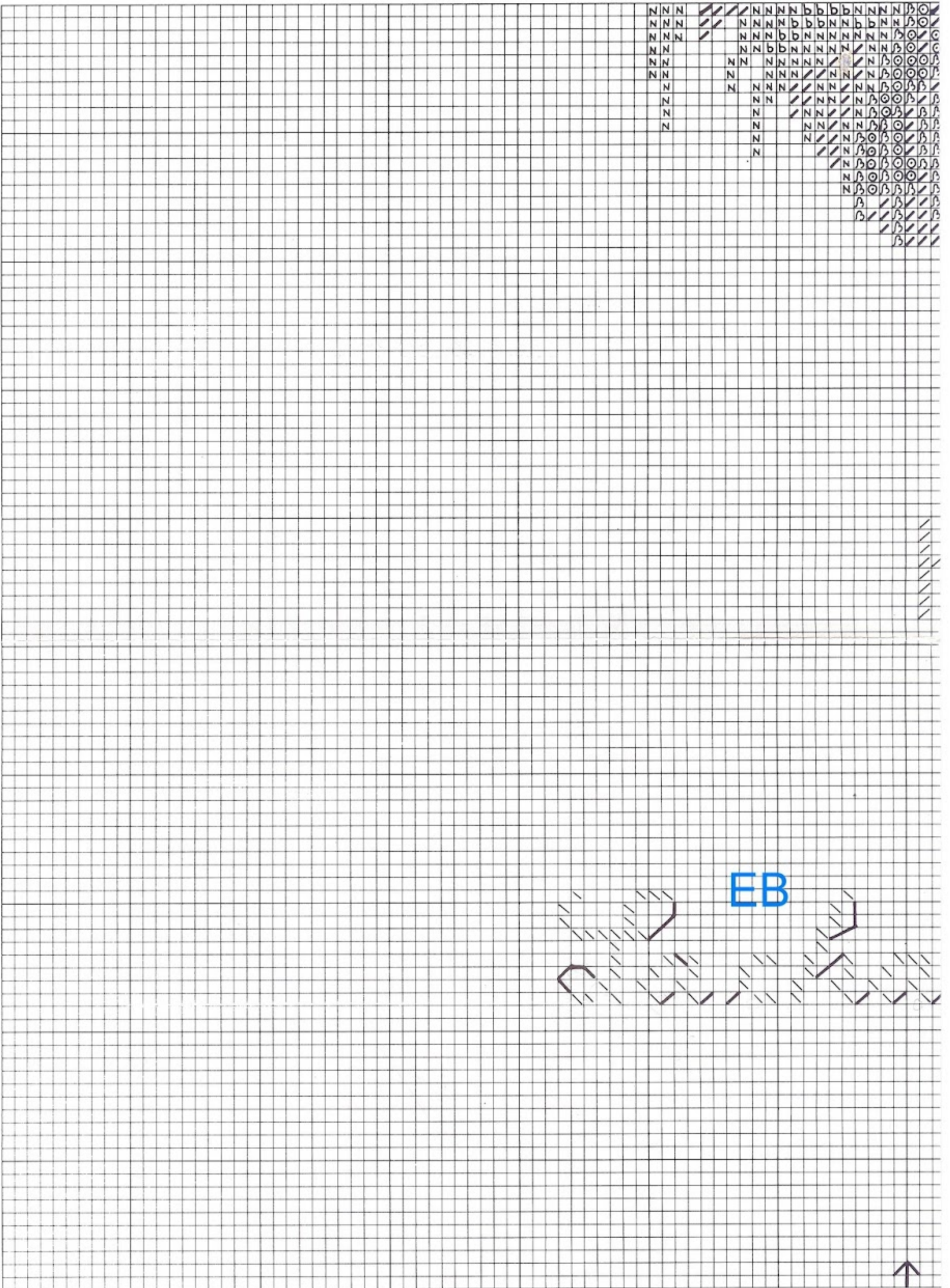


Les gallinacés / Gallinacean

XC0190



936



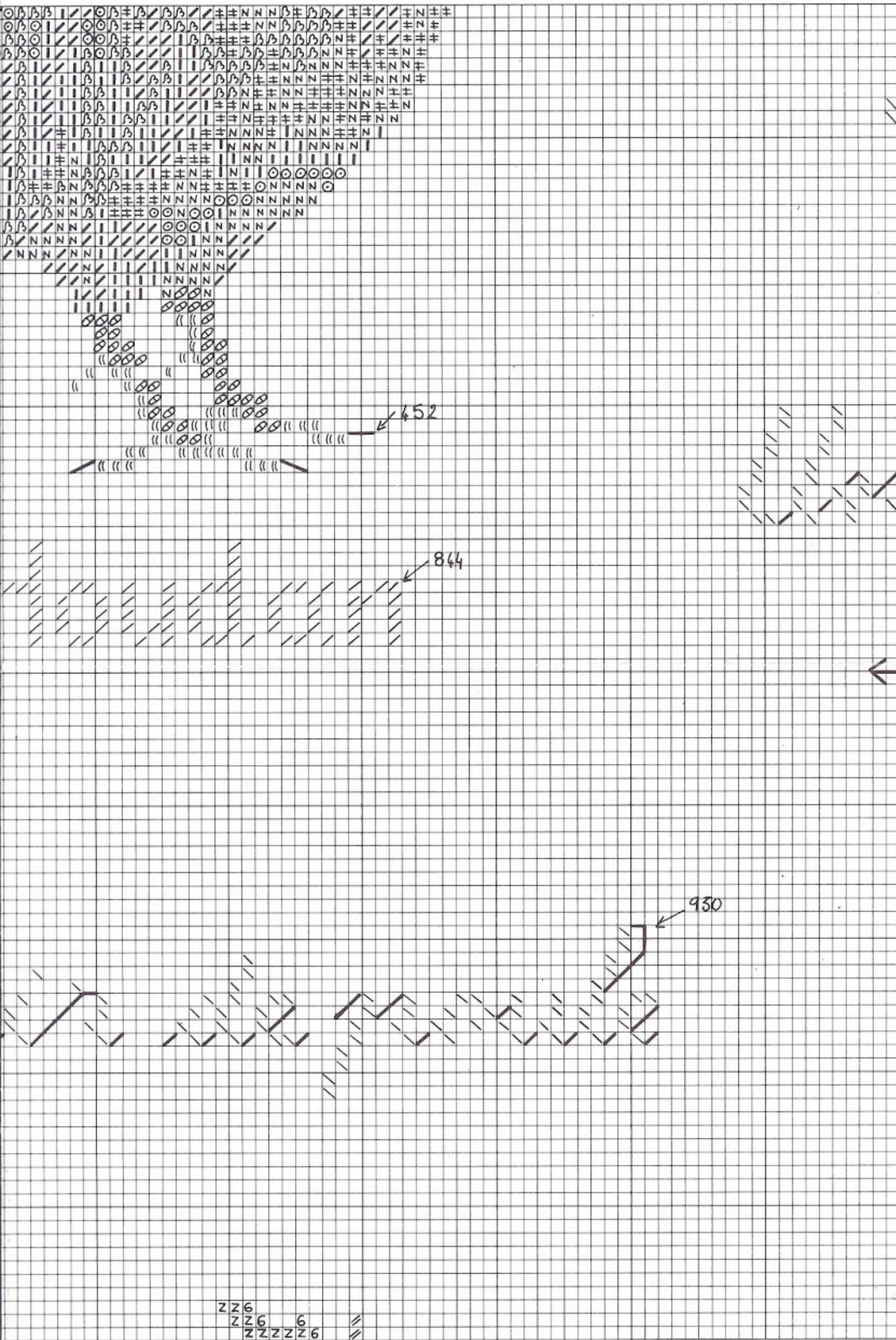
9

Création : Marie Thérèse Saint Aubin pour DMC.



Les gallinacés / Gallinacean

XC0190

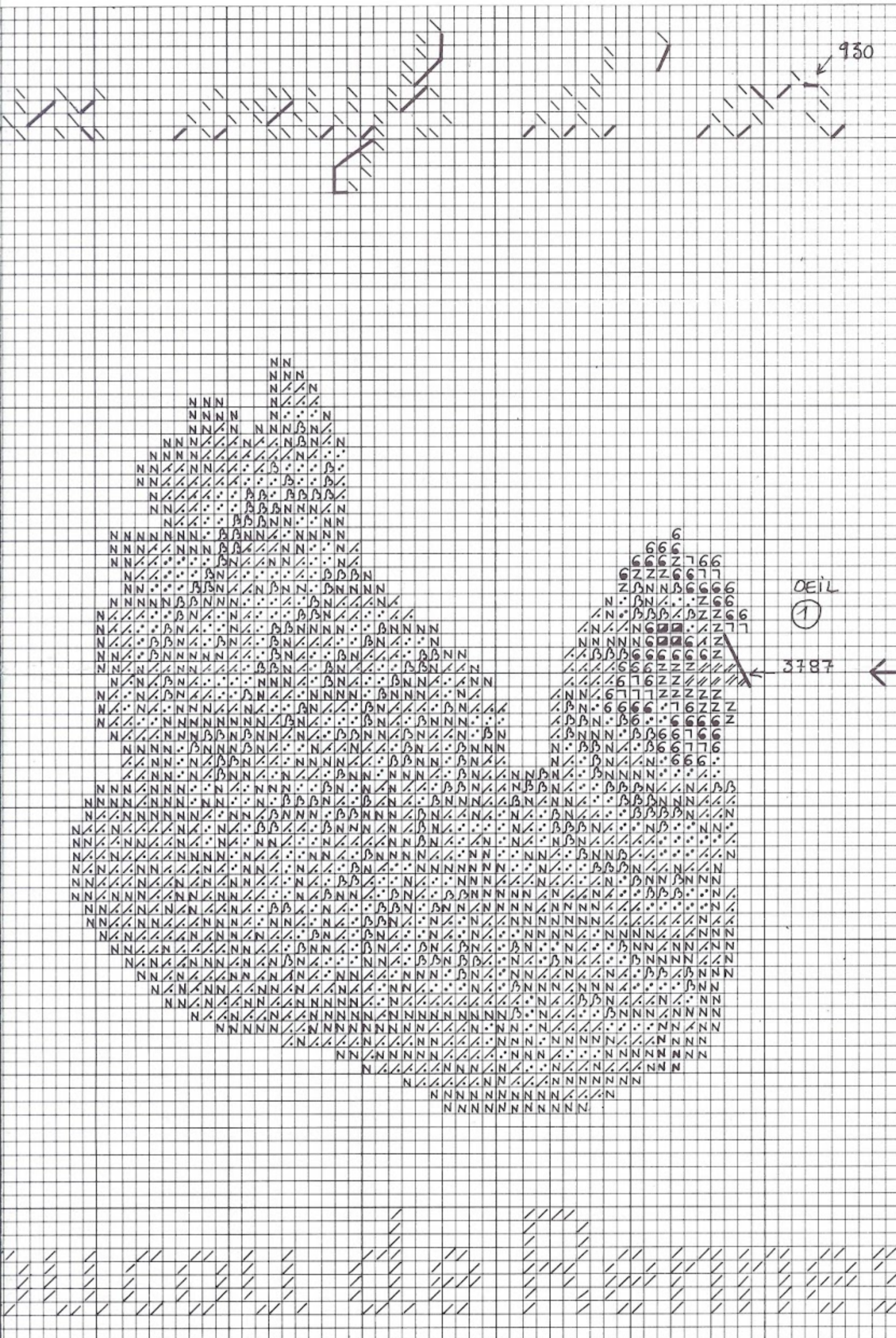


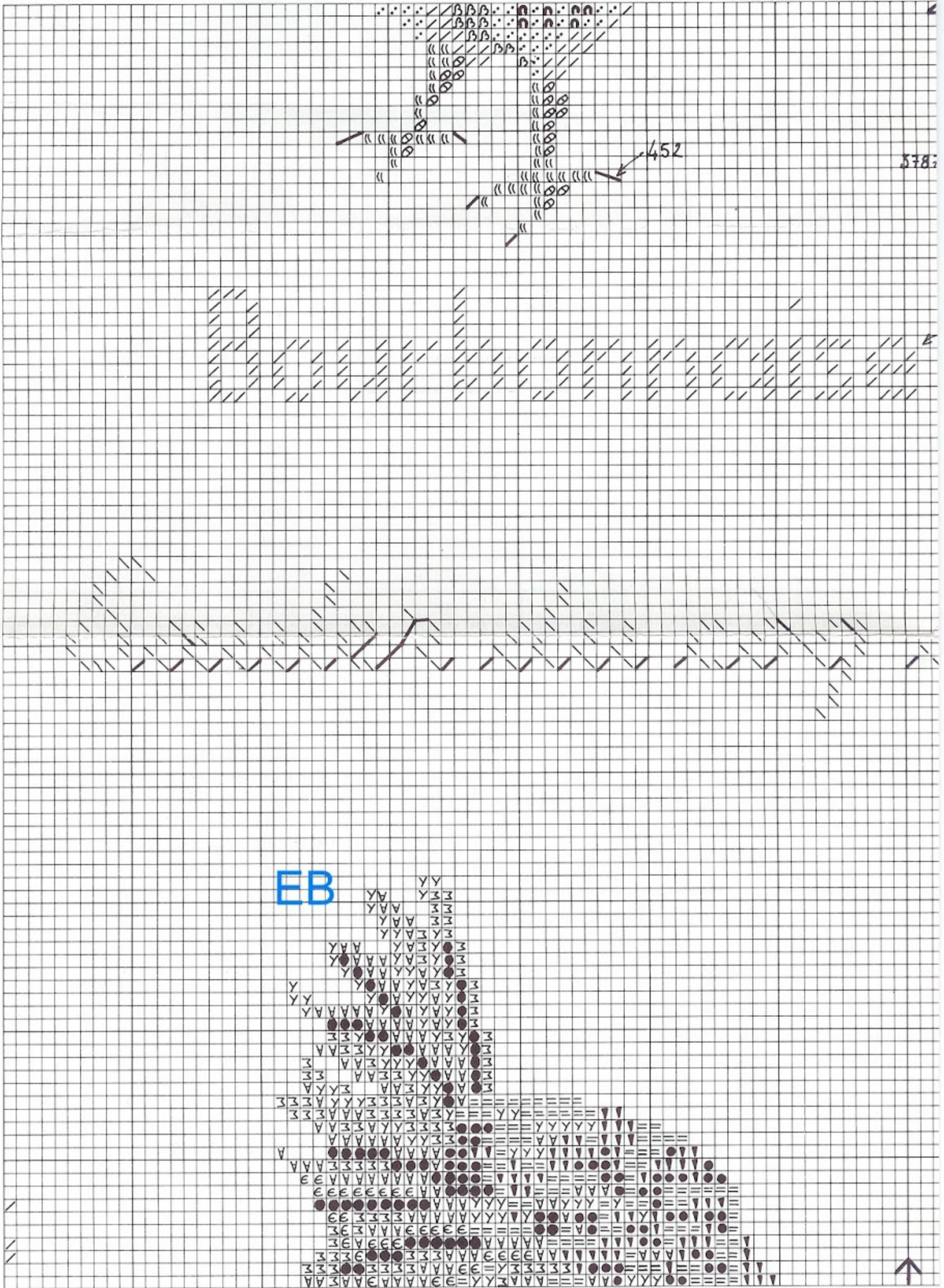
Création : Marie Thérèse Saint Aubin pour DMC.



Les gallinacés / Gallinacean

XC0190



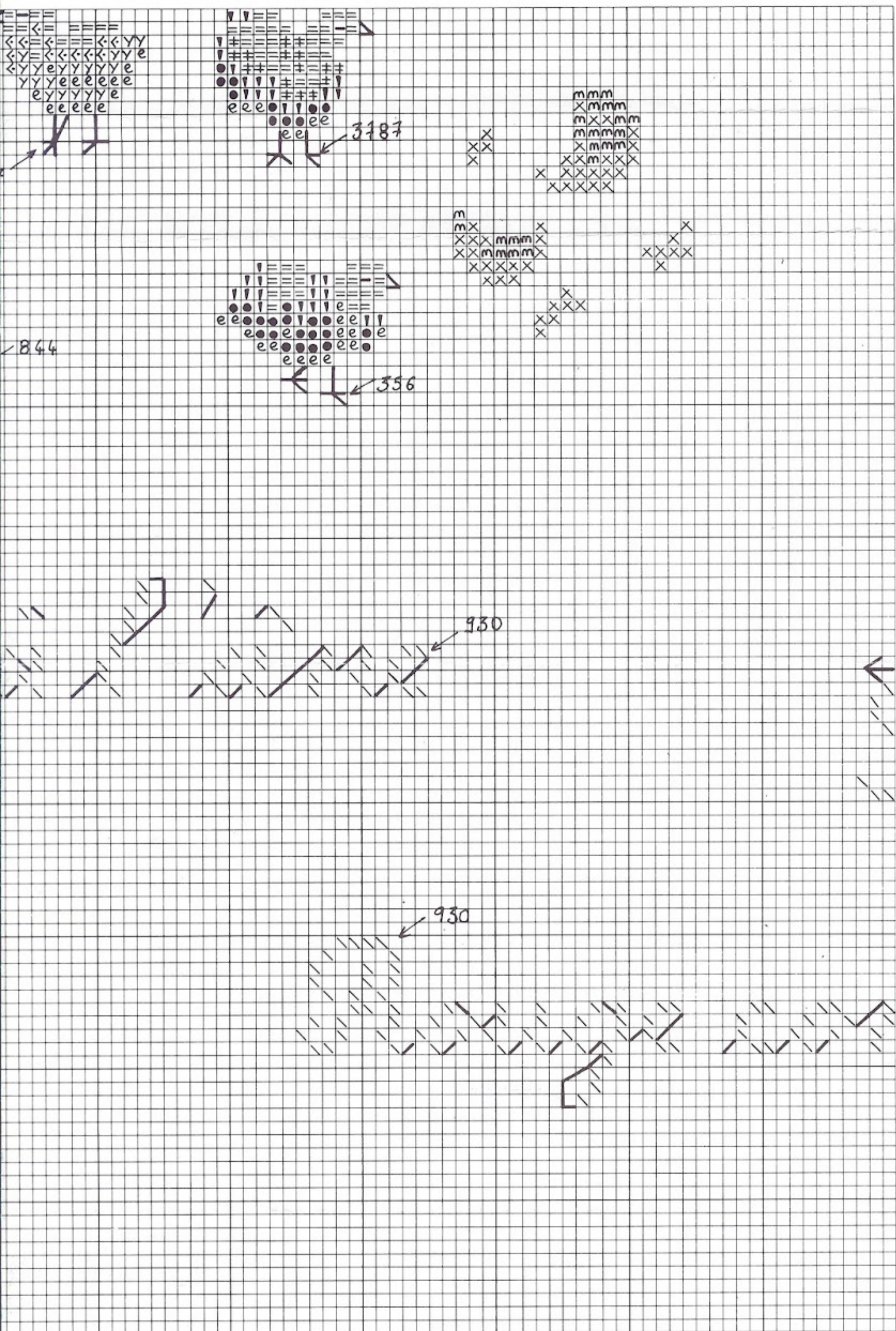


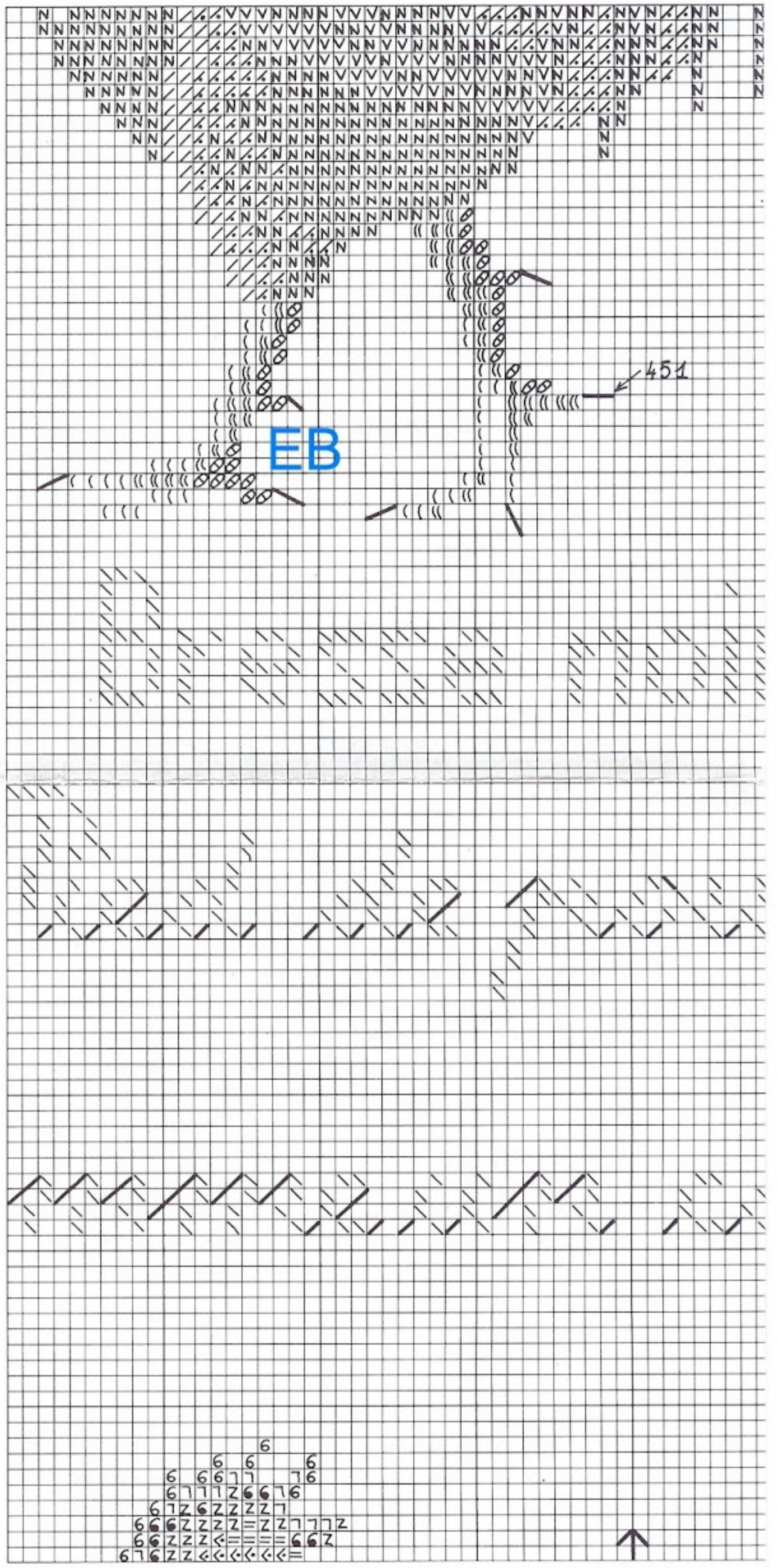
11
Création : Marie Thérèse Saint Aubin pour DMC.



Les gallinacés / Gallinacean

XC0190





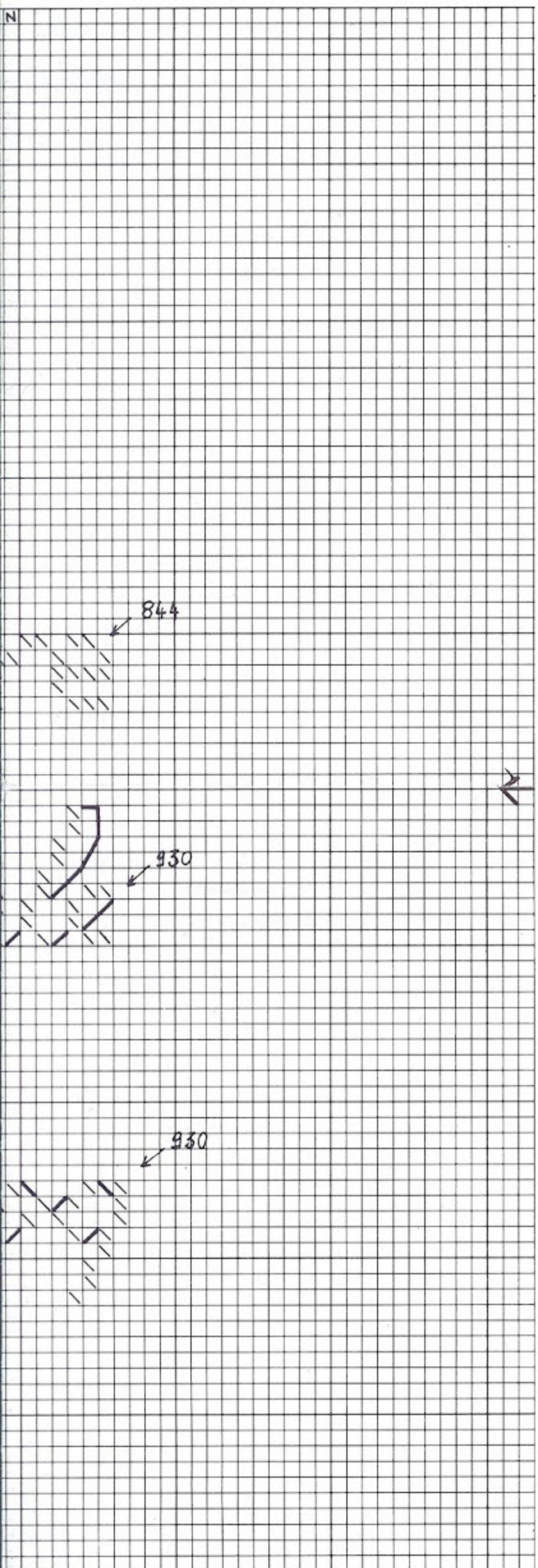
12

Création : Marie Thérèse Saint Aubin pour DMC.

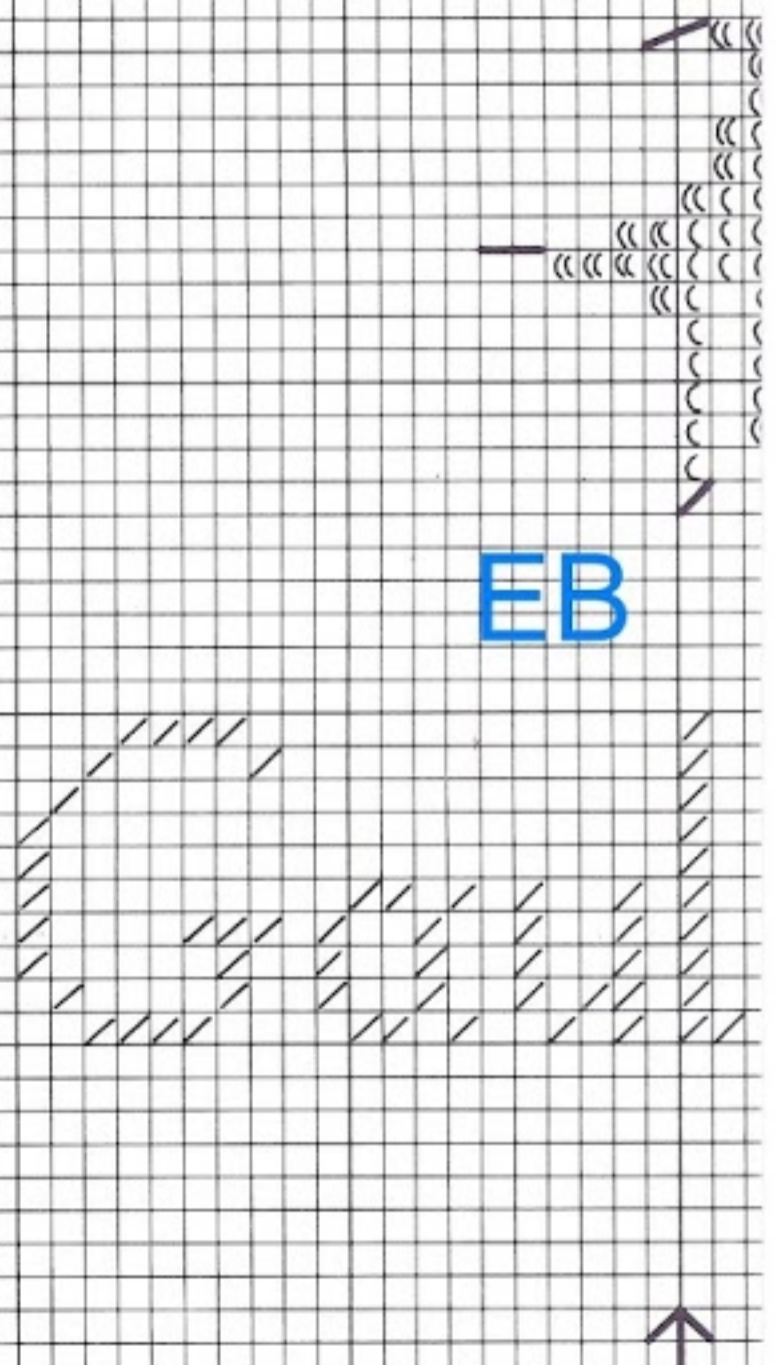
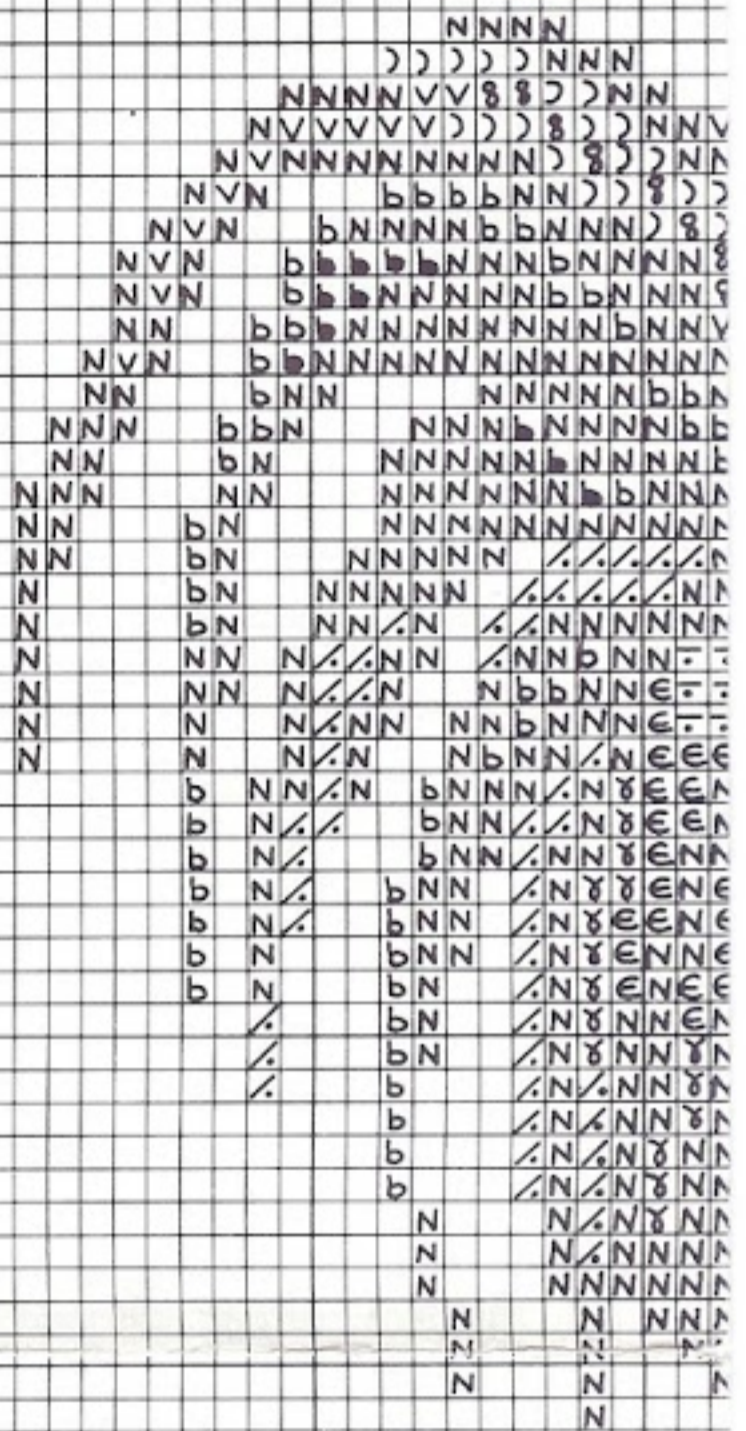


Les gallinacés / Gallinacean

XC0190



Création : Marie Thérèse Saint Aubin pour DMC.



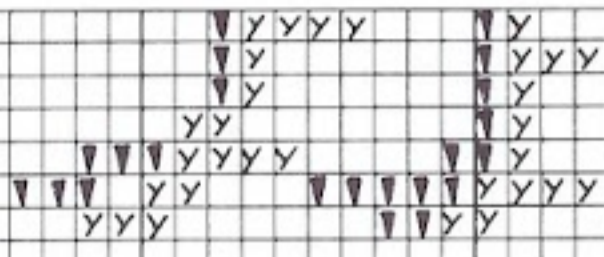
EB



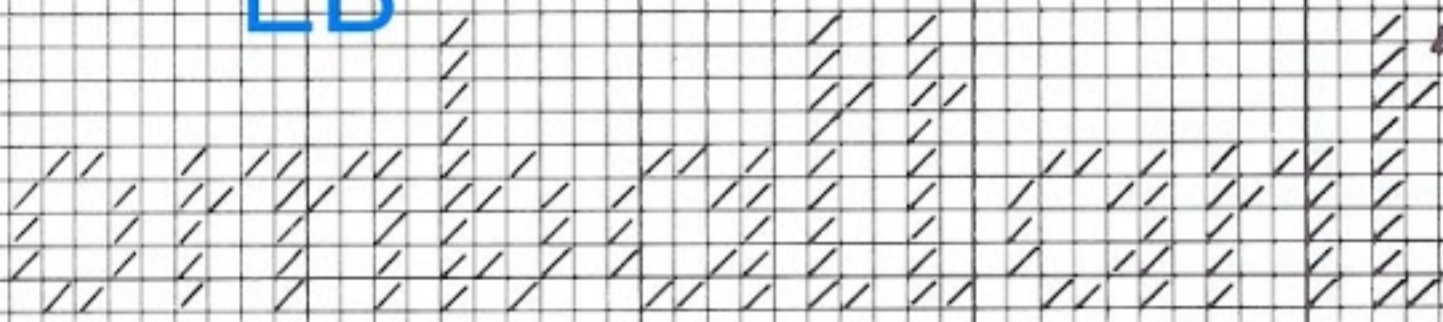
Les gallinacés / Gallinacean

XC0190





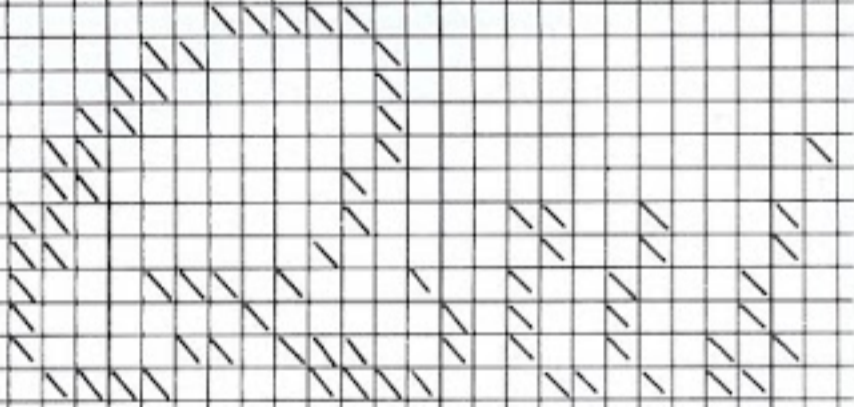
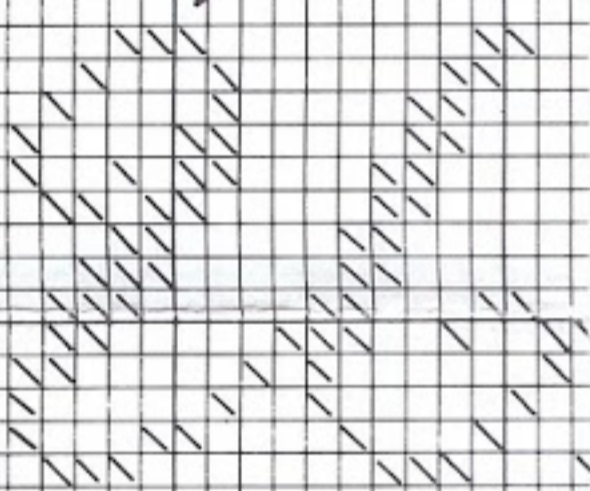
EB



844



930

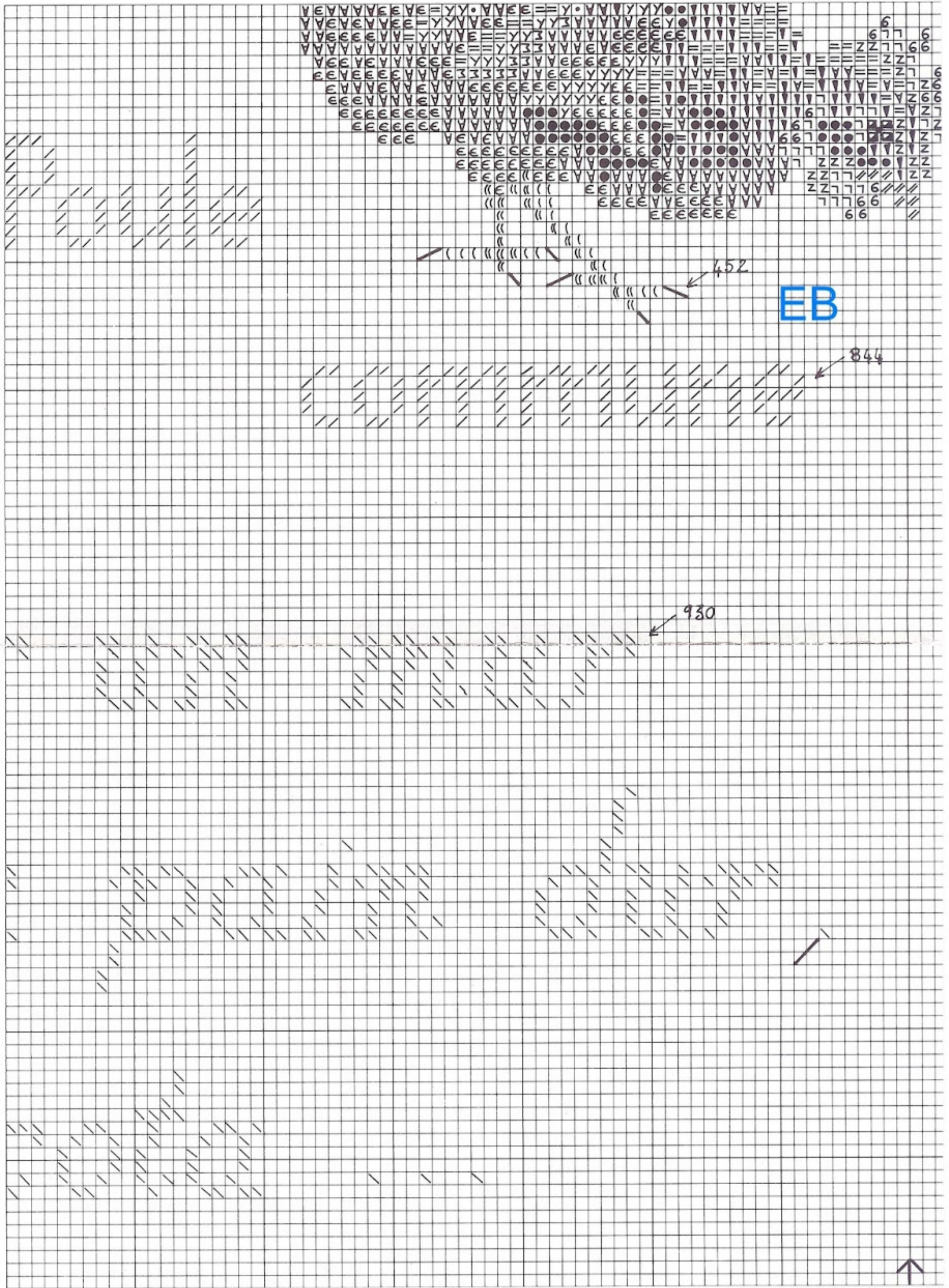


Les gallinacés / Gallinacean

XC0190

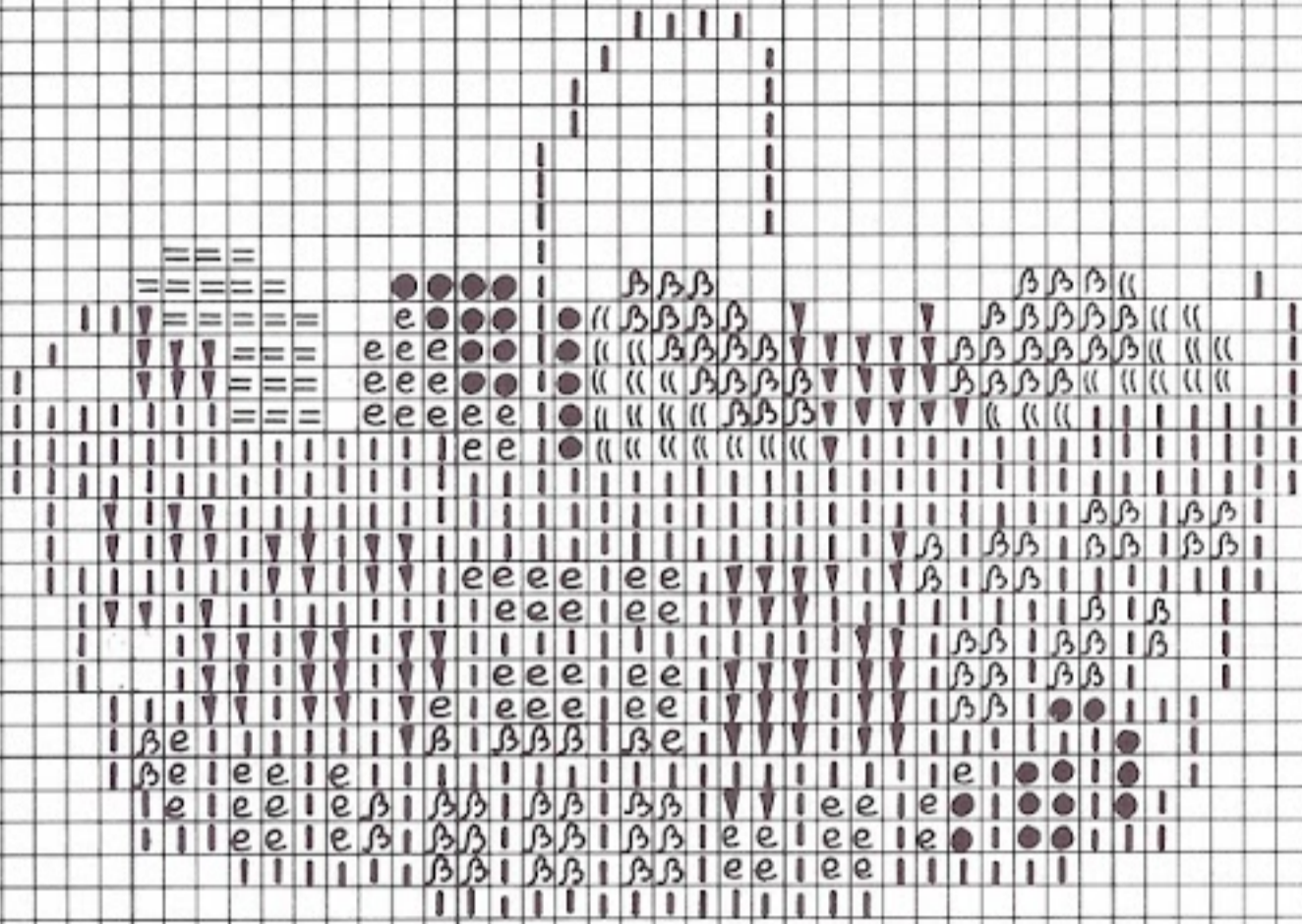


Création : Marie Thérèse Saint Aubin pour DMC.



Les gallinacés / Gallinacean

XC0190



6 Ocul

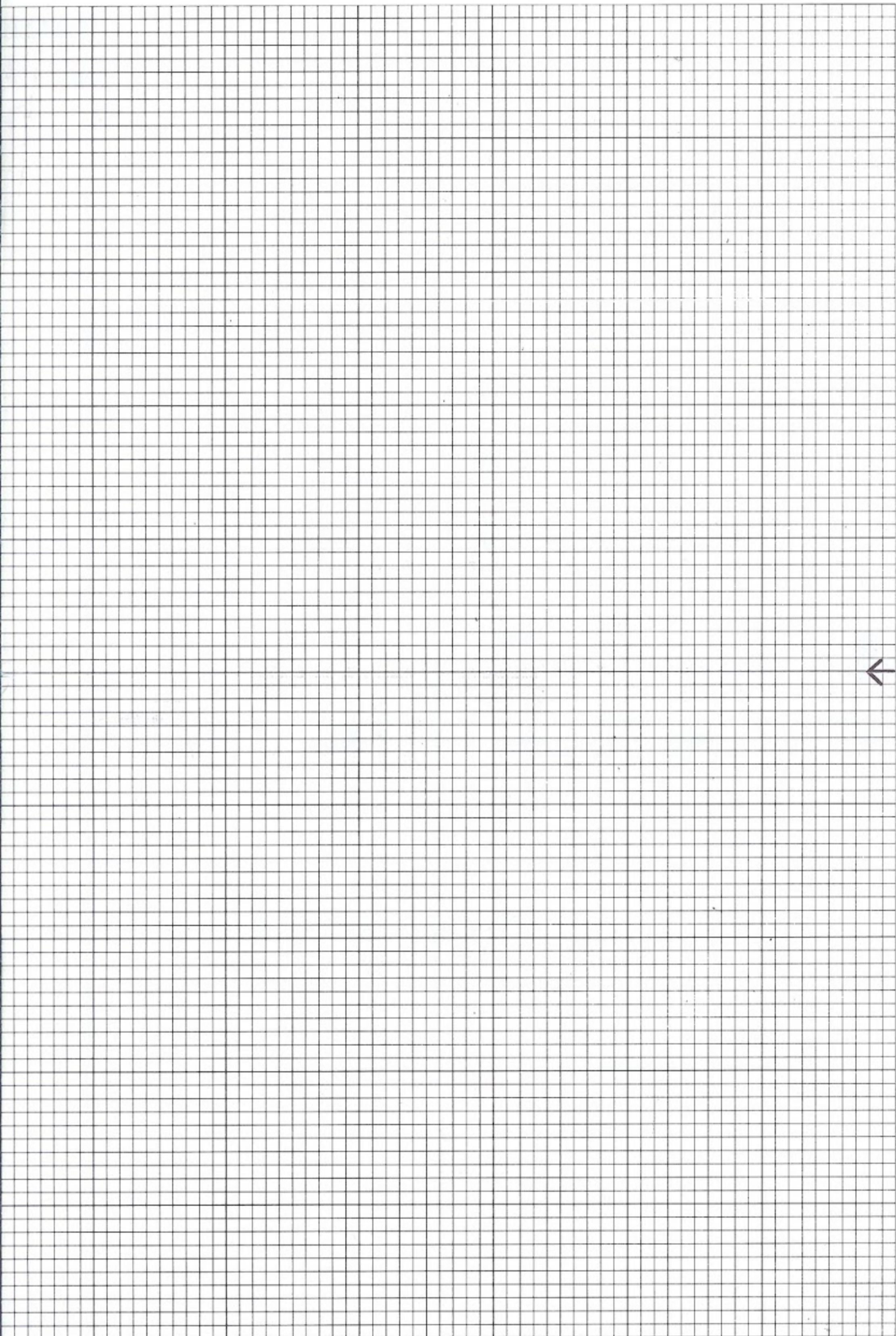
①

Citation : Marie Thérèse Saint Aubin pour DMC.



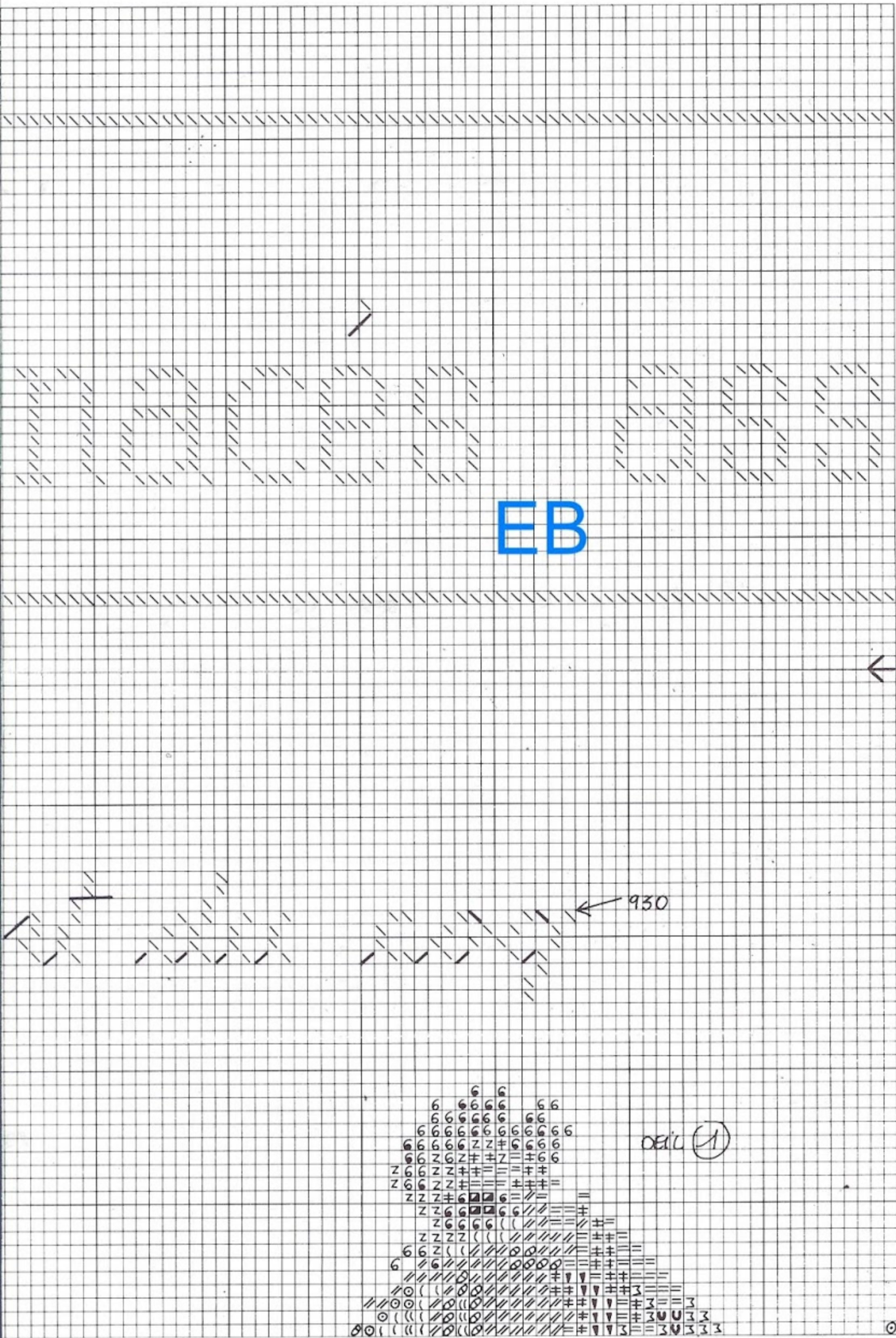
Les gallinacés / Gallinacean

XC0190



Les gallinacés / Gallinacean

XC0190



- Plan du diagramme

1	2	3	4
5	6	7	8
9	10	11	12
13	14	15	16

Les gallinacés

XCO

COLLE

Terroir /

31 x 33,5 cm -

N° Nuancier Colour card No	Symbole Symbol	Mouliné DMC DMC 117	Nom de la couleur Colour name		Nbre d'aiguillées* Nb of lengths*
①		355	Brun caroubier foncé	Dark carob brown	2
②		356	Brun caroubier clair	Light carob brown	2
③		400	Praline	Praline brown	2
④		433	Cachou très foncé	Very dark cachou	3
⑤		434	Cachou foncé	Dark cachou	3
⑥		435	Cachou moyen	Medium cachou	2
⑦		436	Cachou clair	Light cachou	2
⑧		640	Ficelle foncé	Dark rope beige	3
⑨		642	Ficelle moyen	Medium rope beige	2
⑩		644	Ficelle clair	Light rope beige	2
⑪		645	Taupe	Mole grey	2
⑫		738	Havane pâle	Light tobacco brown	3
⑬		739	Chair	Flesh	2
⑭		762	Gris perle	Pearl grey	2
⑮		780	Noisette	Nut brown	2
⑯		781	Ocre foncé	Dark ochre	3
⑰		783	Ocre clair	Light ochre	3
⑱		838	Marron glacé foncé	Dark marron glacé	2
⑲		839	Marron glacé clair	Light marron glacé	2
⑳		840	Marron glacé très clair	Very light marron glacé	2
㉑		844	Castor	Beaver	2
㉒		3021	Marron foncé	Dark brown	2
㉓		3371	Chocolat	Chocolate	2
㉔		3787	Marron moyen	Medium brown	4
㉕		317	Gris éléphant	Elephant grey	2
㉖		318	Gris acier	Steel grey	2
㉗		413	Gris éléphant foncé	Dark elephant grey	4
㉘		451	Gris rose foncé	Dark pink grey	4

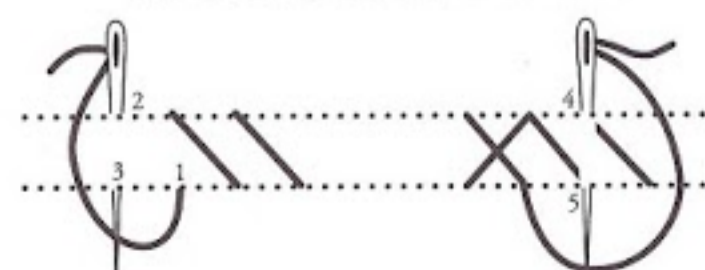
Point de Croix - Cross Stitch

Utiliser 1 brin sur 1 fil de trame

Use 1 strand over 1 threads

* aiguillées de 50 cm

* needlefuls of 50 cm



/ Gallinacean

190

CTION

Country

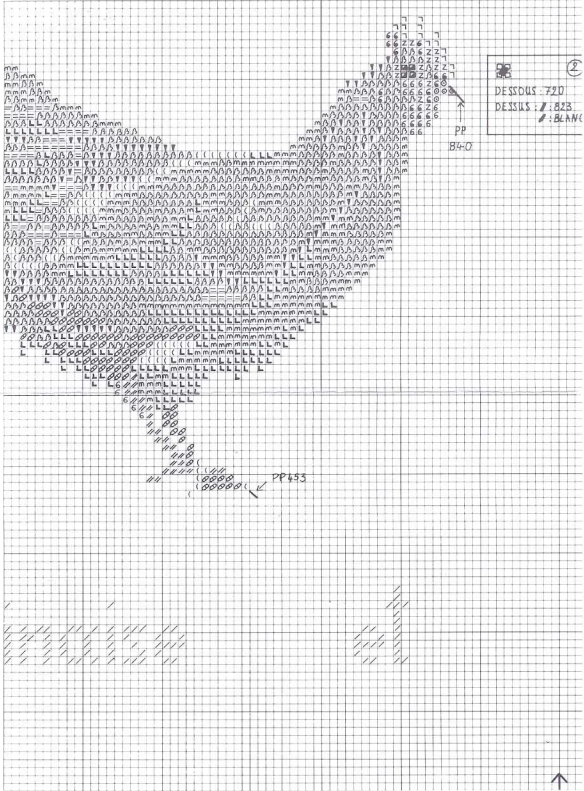
12 1/6 x 13 1/6"

N° Nuancier Colour card No	Symbole Symbol	Mouliné DMC DMC 117	Nom de la couleur Colour name		Nbre d'aiguillées* Nb of lengths*
29		452	Gris rose moyen	Medium pink grey	4
30		453	Gris rose clair	Light pink grey	4
31		3799	Anthracite	Charcoal grey	2
32		550	Violet	Purple	1
33		791	Bleu france	French blue	2
34		823	Outremer	Ultramarine blue	2
35		930	Bleu acier foncé	Dark steel blue	5
36		931	Bleu acier moyen	Medium steel blue	2
37		932	Bleu acier clair	Light steel blue	2
38		3750	Bleu canard	Green blue	2
39		3752	Bleu clair	Light blue	2
40		347	Rouge brique	Brick red	2
41		720	Orange	Orange	2
42		814	Pourpre	Purple	2
43		902	Lie de vin	Wine red	3
44		919	Rouille	Rust red	3
45		921	Roux	Ginger	2
46		977	Mandarine foncée	Dark mandarin	2
47		3827	Mandarine claire	Light mandarin	2
48		924	Vert acier	Steel green	3
49		991	Malachite	Dark charcoal grey	3
50		3818	Vert vif	Bright green	3
51		310	Noir	Black	5
52		Ecrú	Ecrú	Ecrú	4
53		Blanc	Blanc	White	5
TOTAL 53			53	53	132

composées de 6 brins
made up of 6 strands

Point de Piqûre - Back Stitch
Utiliser 1 brin - Use 1 strand



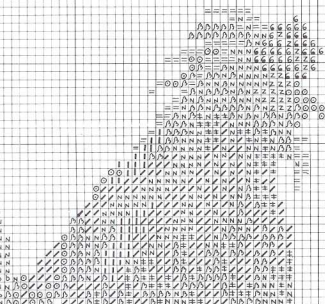




B44

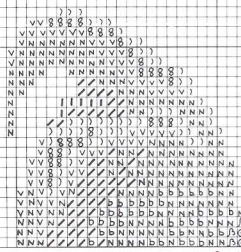
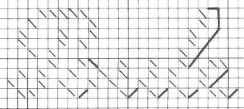


430



XC0190

Les gallinacés / Gallinacean

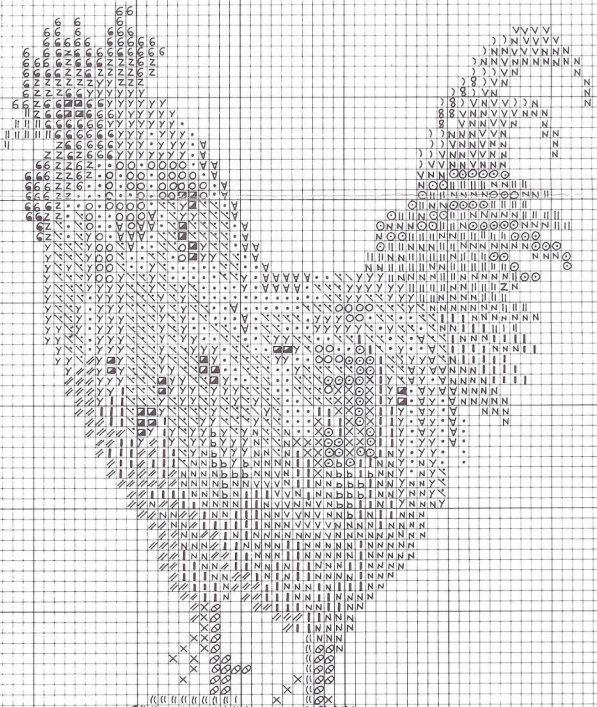


Les gallinacés / Gallinacean

XC0190



7150
1



Les gallinacés / Gallinacean

XC0190



EB

930



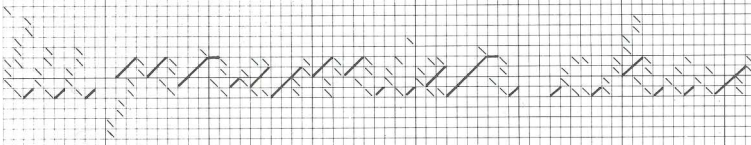
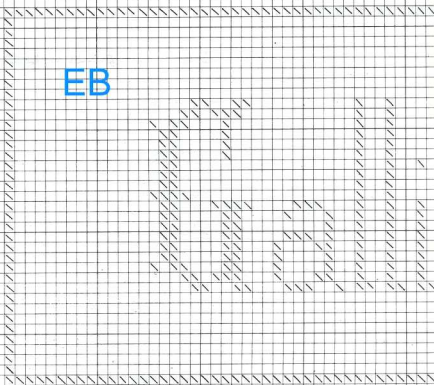
846



EB chais

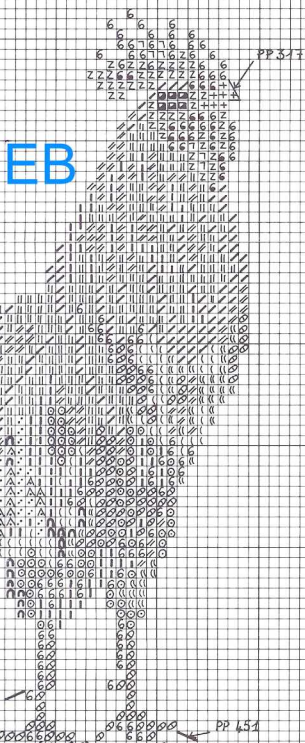
Diagram showing a row of stitches with a zigzag pattern, likely representing a specific stitch technique.





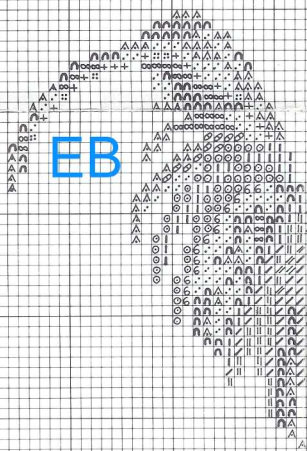
Les gallinacés / Gallinacean

XC0190

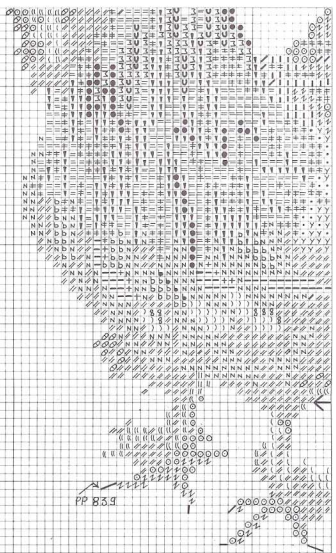


①
DETAIL DE L'OEIL
DESSOUS : 720
DESSUS : X : 823
I : BLANC





2
20
823
BLANC



Les gallinacés / Gallinacean

XC0190

