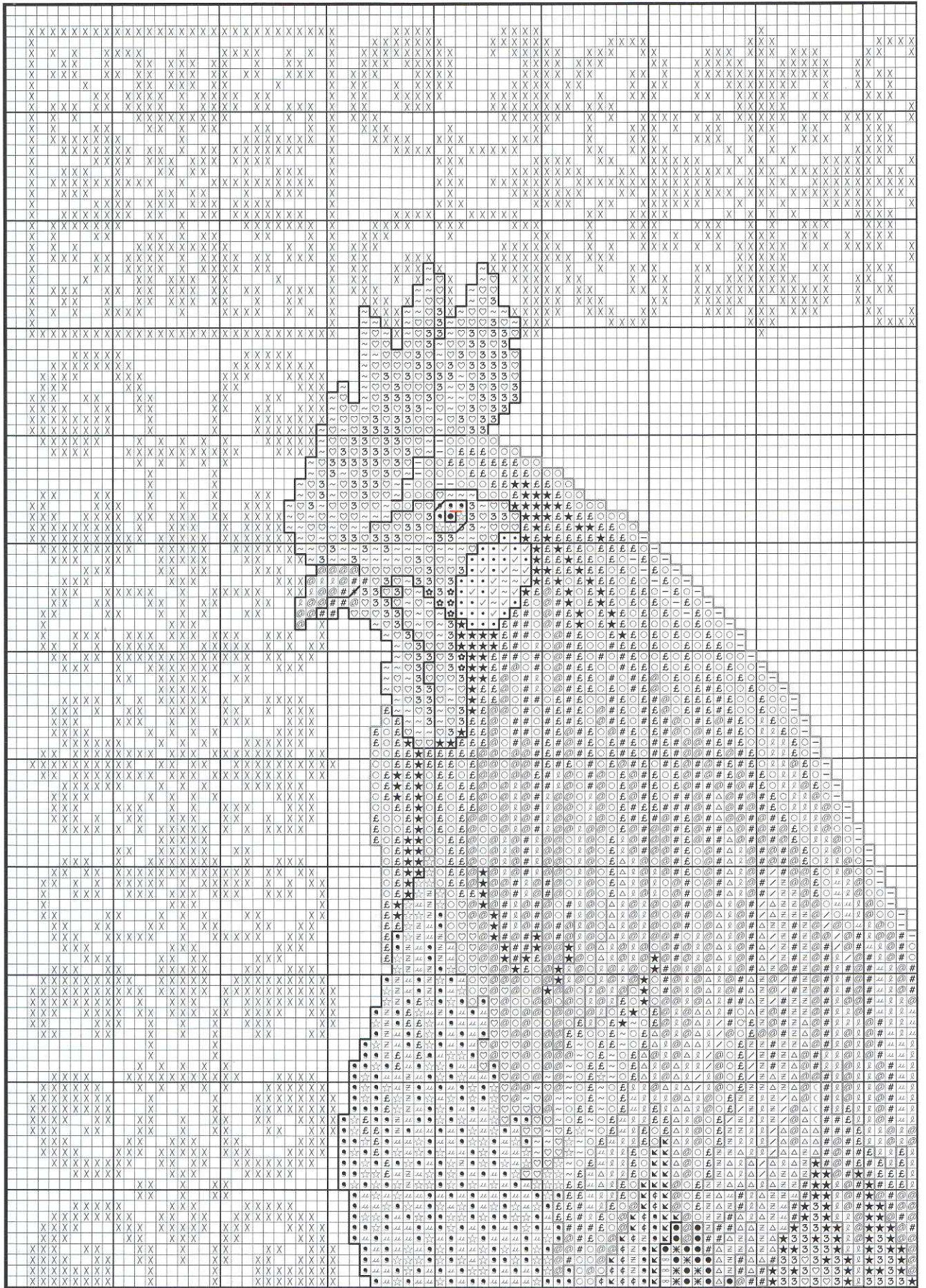
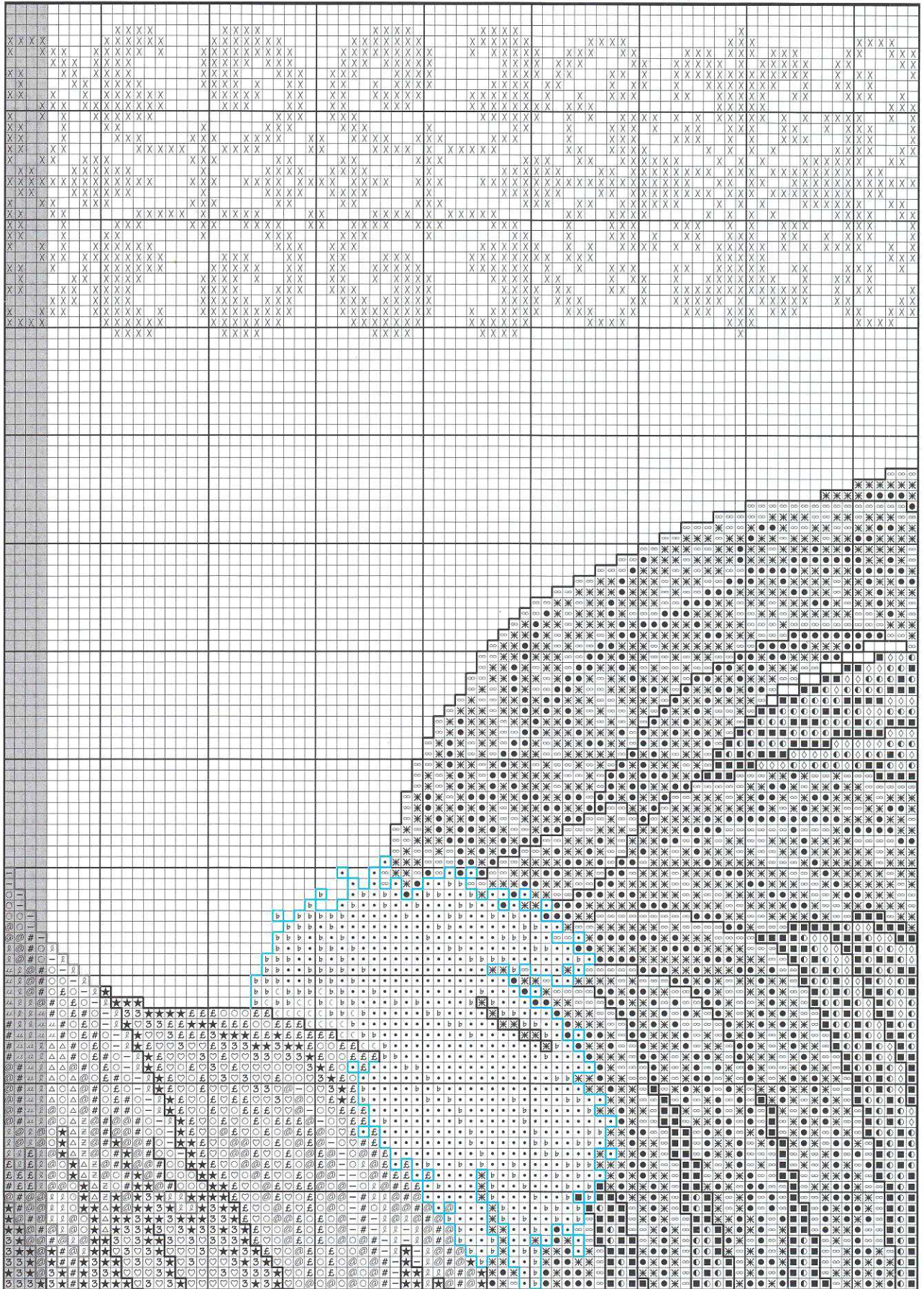


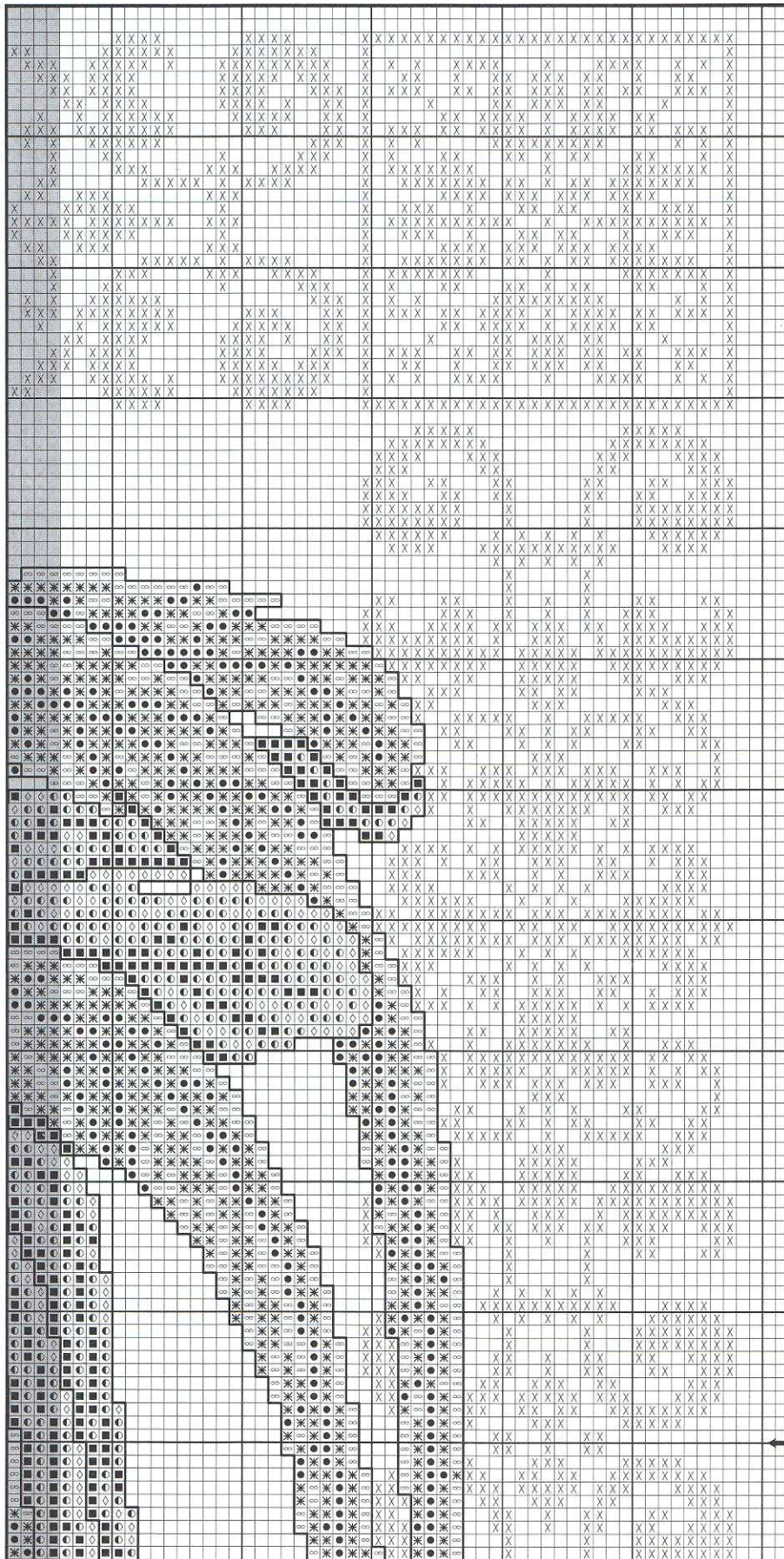
# French Roaster II: Welsummer Rooster



Shaded portion indicates overlap from previous page.



Shaded portion indicates overlap from previous page.



## French Rooster II: Welsummer Rooster

Designed by Sharon Pope

### Materials

- 18" x 18" piece 36-count Luna Edinburgh® linen from Lakeside Linens\*
- One skein each DMC® or Sullivans USA six-strand embroidery floss (Model uses DMC®)\*\*
- One skein The Caron Collection Waterlilies™ silk embroidery floss\*\*
- Size 26 tapestry needle
- Professionally framed\*

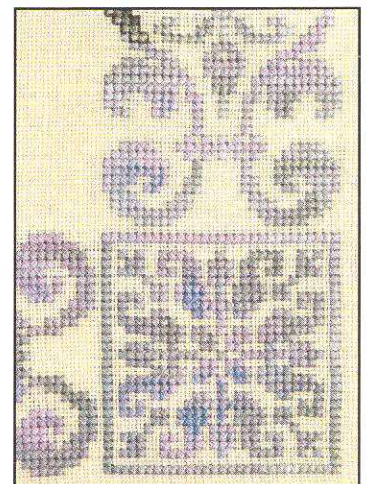
\*See "Where to Find It" on page 64.

\*\*Refer to color code.

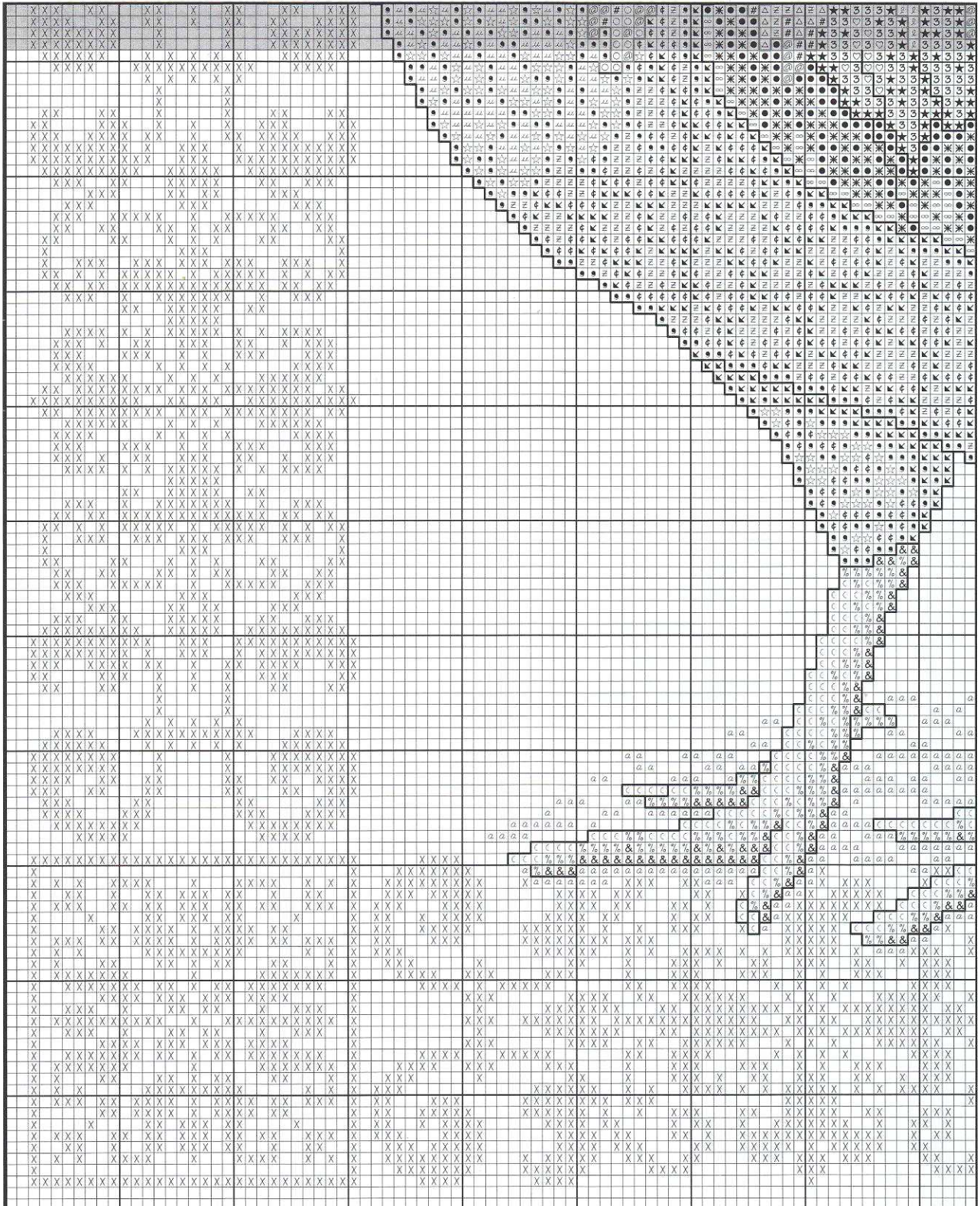
### DMC® Sullivans USA

|   |      |       |                   |
|---|------|-------|-------------------|
| ✓ | 353  | 45077 | peach             |
| ~ | 352  | 45076 | coral, lt.        |
| ♥ | 350  | 45074 | coral, med.       |
| ∩ | 349  | 45073 | coral, dk.        |
| ♣ | 498  | 45108 | red, dk.          |
| / | 746  | 45187 | off white         |
| △ | 745  | 45186 | pale yellow, lt.  |
| ℓ | 744  | 45185 | yellow, pl.       |
| @ | 728  | 45491 | topaz             |
| # | 783  | 45201 | topaz, med.       |
| - | 3855 | 45453 | autumn gold, lt.  |
| ○ | 3854 | 45452 | autumn gold, med. |
| £ | 3853 | 45451 | autumn gold, dk.  |
| ★ | 920  | 45266 | copper, med.      |
| ∩ | 738  | 45179 | tan, vy. lt.      |
| z | 437  | 45098 | tan, lt.          |
| ☆ | 436  | 45097 | tan               |

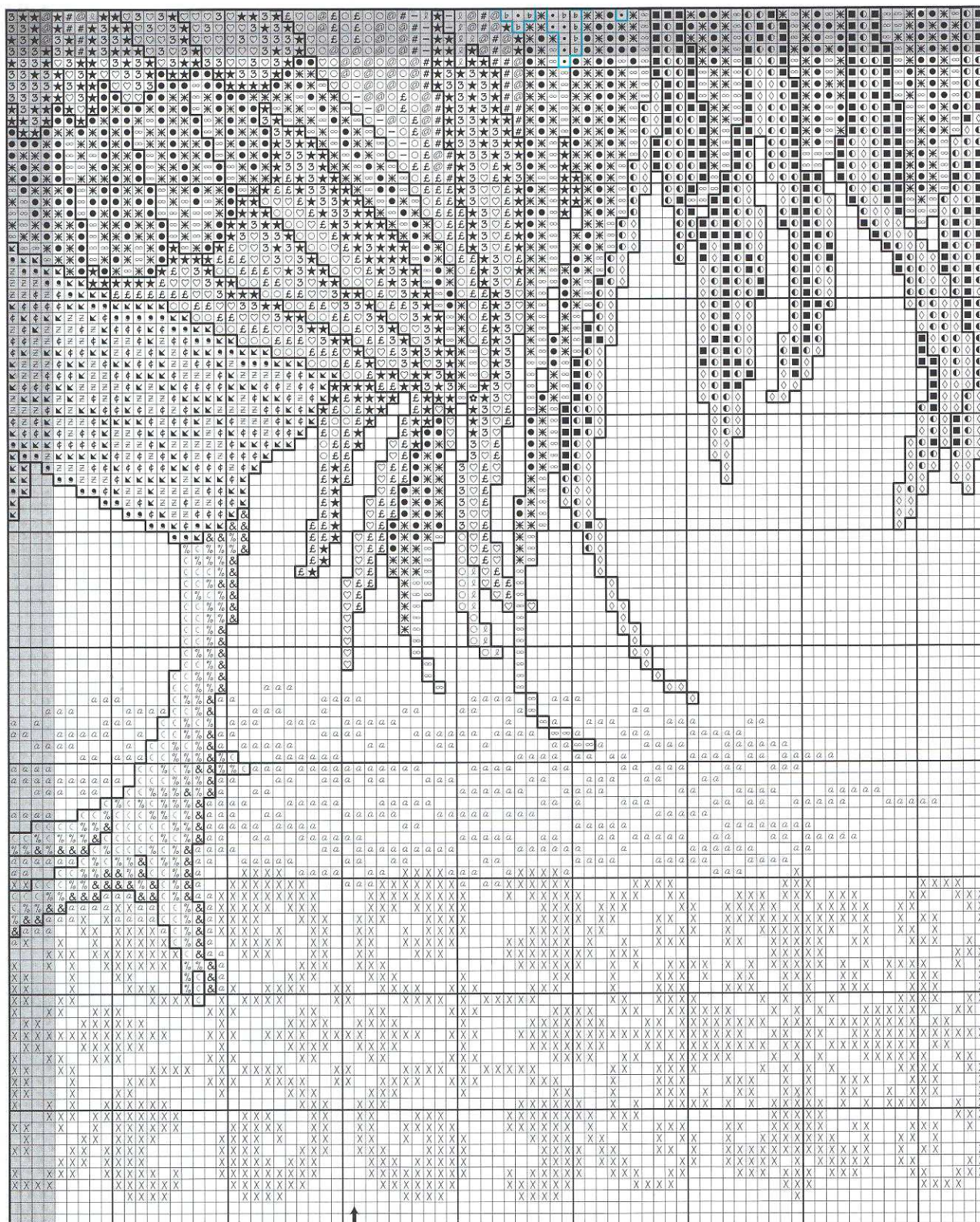
Color code continued on page 42.



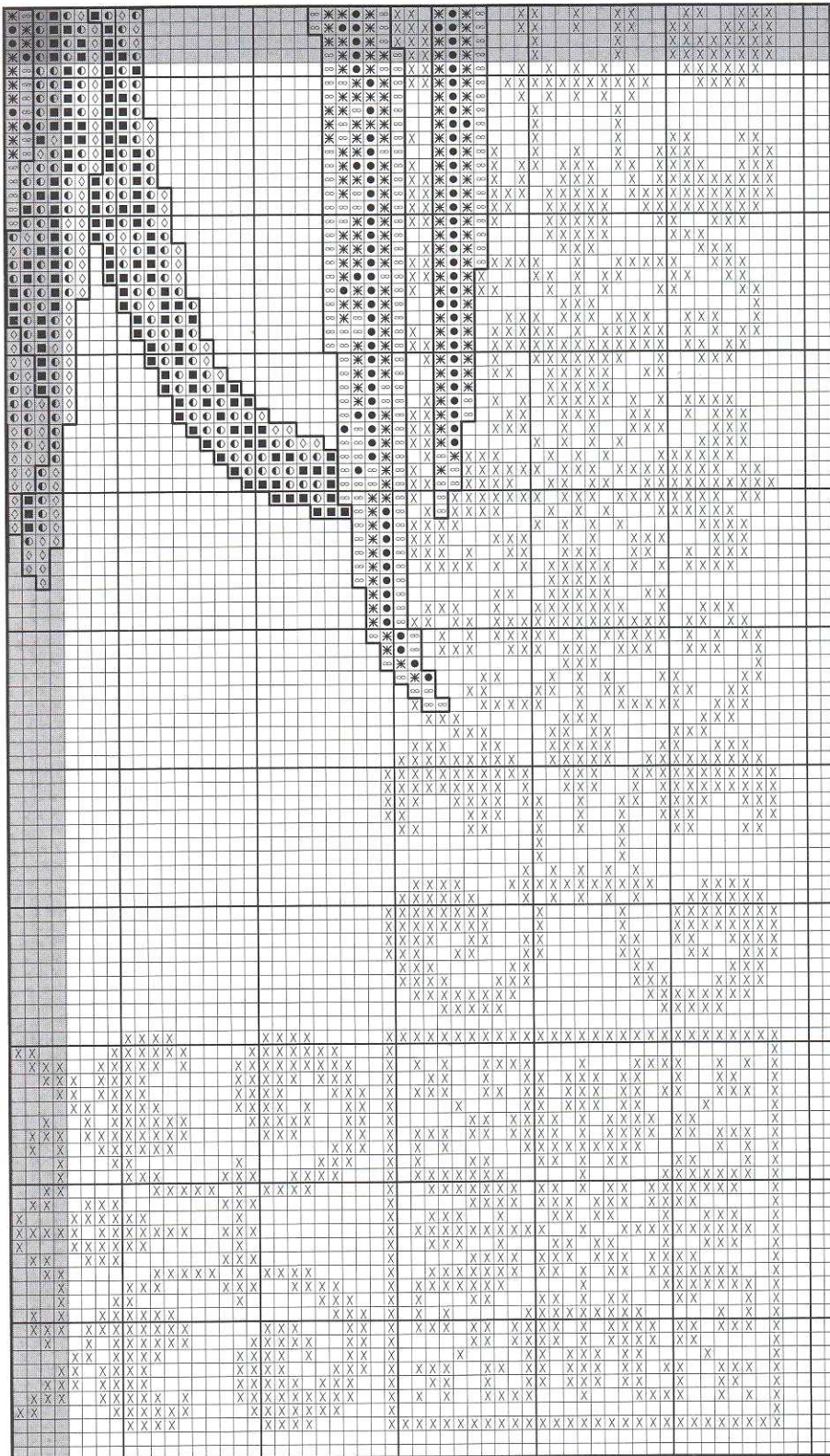
Shaded portion indicates overlap from page 15.



Shaded portion indicates overlap from previous page and page 16.



Shaded portion indicates overlap from previous page and page 17.



- ⊕ 435 45096 brown, vy. lt.
- 434 45095 brown, lt.
- ✕ 433 45094 brown, med.
- ↳ 3841 45439 baby blue, pl.
- ◇ 322 45063 baby blue, dk.
- 312 45055 baby blue, vy. dk.
- 311 45054 navy blue, med.
- ∞ 502 45111 blue green
- \* 501 45110 blue green, dk.
- 500 45109 blue green, vy. dk.
- ◊ 644 45150 beige gray, med.
- % 642 45149 beige gray, dk.
- & 3790 45396 beige gray, ul. dk.
- a 3790 45396 beige gray, ul. dk.  
(one strand)
- blanc 45001 white

**The Caron Collection Waterlilies™**

DMC® Alternatives Listed in Parentheses

✕ 229 (517) oasis\*

\*Three skeins required.

**Stitch count:** 216H x 216W

**Design size:** 12" x 12"

**Instructions:** Cross stitch over two threads, using two strands of floss unless otherwise indicated.

Backstitch over two threads, using one strand of floss.

**Backstitch instructions:**

- blanc 45001 eye highlight (red line)
- 434 45095 neck; feathers (gray lines)
- 644 45150 white feathers (blue lines)
- 3021 45428 remainder of backstitch

Stitched by Pat Turner

