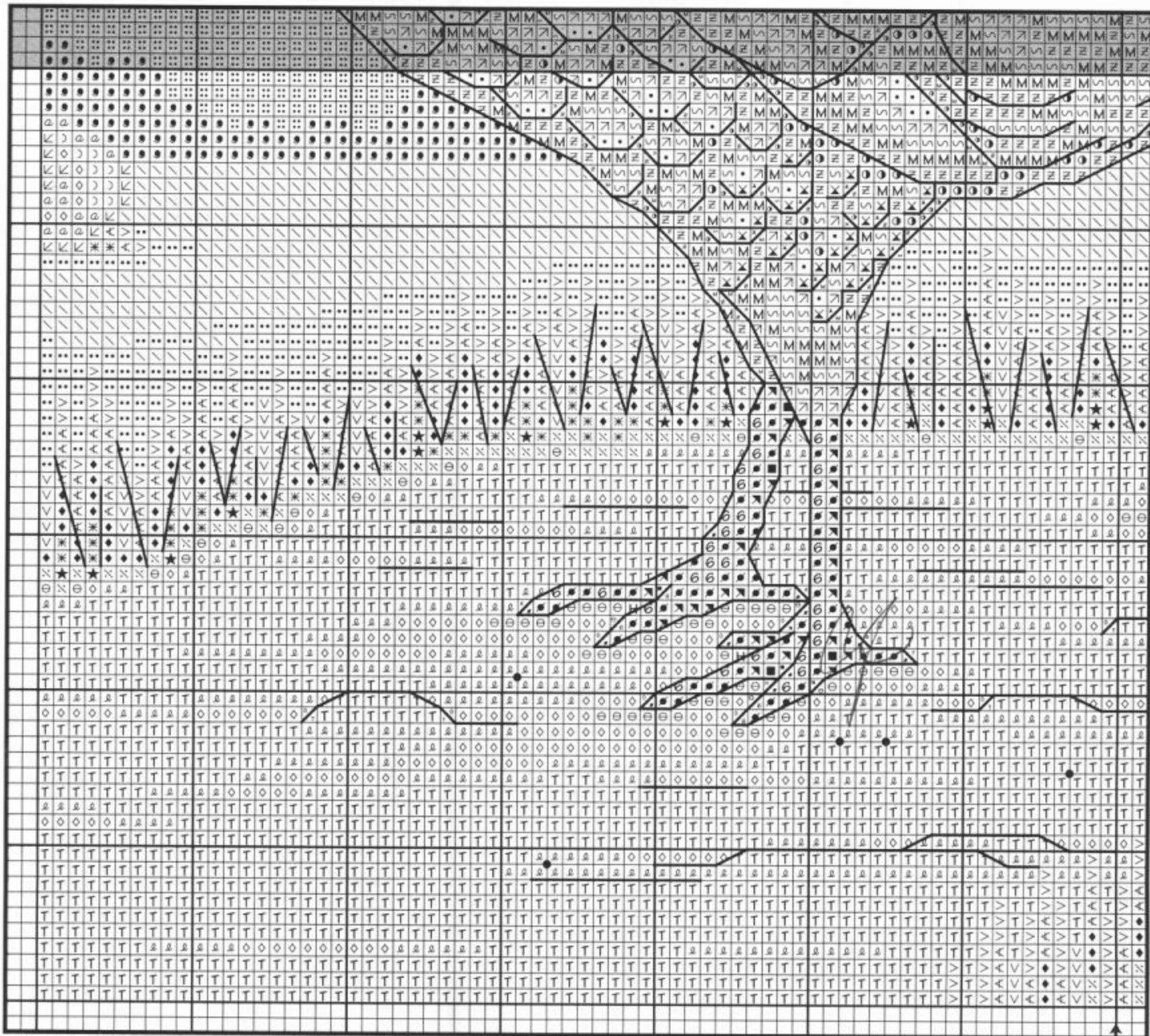


SILVER-PENCILED HAMBURG

Shaded portion indicates overlap from previous page.



SILVER-PENCILLED HAMBURG

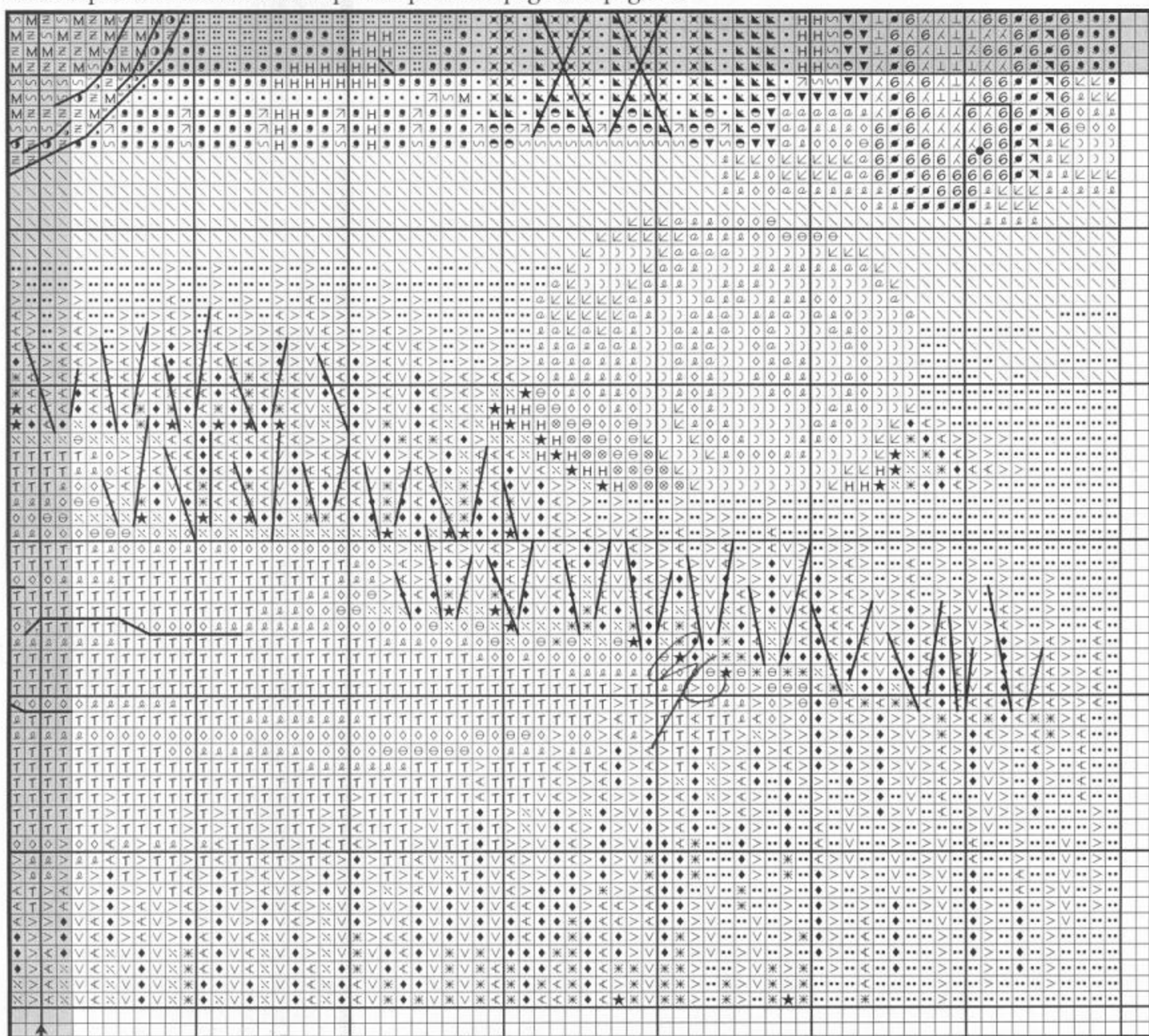


SILVER-PENCILED HAMBURG

Designed by Angela Pullen

DMC Coats Anchor*

✕ 349	2335	13	coral, dk.	† 3047	2300	956	yellow-beige, lt.
• white	1001	01	white	⌋ 3047	2300	956	yellow-beige, lt.
∇ white	1001	01	white	⌋ 676	2874	887	old gold, lt.
∇ 3072	6005	234	beaver gray, vy. lt.	∠ 676	2874	887	old gold, lt.
∇ 3072	6005	234	beaver gray, vy. lt.	∠ 676	2874	887	old gold, lt.
∇ 3072	6005	234	beaver gray, vy. lt.	∠ 3046	2410	888	yellow-beige, med.
∇ 648	8390	900	beaver gray, lt.	∠ 3046	2410	888	yellow-beige, med.
∇ 648	8390	900	beaver gray, lt.	∠ 3045	2412	886	yellow-beige, lt.
● 647	8900	8581	beaver gray, med.	∠ 3045	2412	886	yellow-beige, lt.
∠ 646	8500	273	beavergray, dk.	∠ 420	5374	374	hazelnut, dk.
∥ 3822	2295	295	straw, lt.	∠ 420	5374	374	hazelnut, dk.
∠ 3822	2295	295	straw, lt.	> 3348	6266	264	yellow-green, lt.
∠ 729	2875	874	old gold, med.	< 3347	6266	267	yellow-green, med.
■ 3799	8999	236	pewtergray, dk.	◆ 3346	6258	268	hunter
∠ 317	8512	400	pewter gray	★ 3345	6258	269	hunter, dk.
				∠ 839	5360	360	beige-brown, dk.
				● 414	8513	235	steel gray, dk.
				∠ 318	8511	399	steel gray, lt.
				∠ 318	8511	399	steel gray, lt.
				∠ 3325	7976	144	baby blue
				∠ 415	8398	398	pearl gray



∨	834	2410	945	olive, vy. lt.
∞	834	2410	945	olive, vy. lt.
∩	3348	6266	264	yellow-green,lt.
∪	3348	6266	264	yellow-green,lt.
∩	3047	2300	956	yellow-beige,lt.
∞	500	6880	879	blue-green, vy. dk.
∩	3799	8999	236	pewtergray,dk.
∞	501	6878	878	blue-green,dk.
←	502	6876	877	blue-green
bs	504	6875	875	blue-green,lt.

Instructions:
 Cross stitch over two threads, using two strands of floss. Backstitch using one strand of floss. When two colors are bracketed together, use one strand of each. Work French knot where • appears at intersecting grid lines, using three strands of floss unless otherwise indicated and wrapping floss around needle once. Work straight stitch using one strand of floss.

839	5360	360	outline of white of body, beak, horse neck inside fence, barn roof, silo, between rooster's legs
317	8512	400	weather vane, silo door and roof lines on ground, edges of hay bales that touch light green
420	5374	374	

Backstitch instructions:
 504 6875 875 tail feathers (except outlined parts that are against blue sky)
 500 6880 879 outline of tail feathers
 3799 8999 236 feet, pupil of eye
 646 8500 273 white of body (except outline)
 814 3044 44 red parts of head

French-knot instructions:
 317 8512 400 on weather vane, door knob of silo (two strands)
 349 2335 13 on ground
Straight-stitch instructions:
 white 1001 01 on doors of barn (one strand)

Fabric:
 28-count glass blue Monaco from Charles Craft, Inc.

Stitch count:
 188H x 160W

Design size:
 14-count 13½" x 11½"
 18-count 10½" x 9"
 25-count 15⅛" x 12⅞"
 28-count 13½" x 11½"

[834 2410 945
 3347 6266 267 grass
 Stitched by Sandy Hedrick