



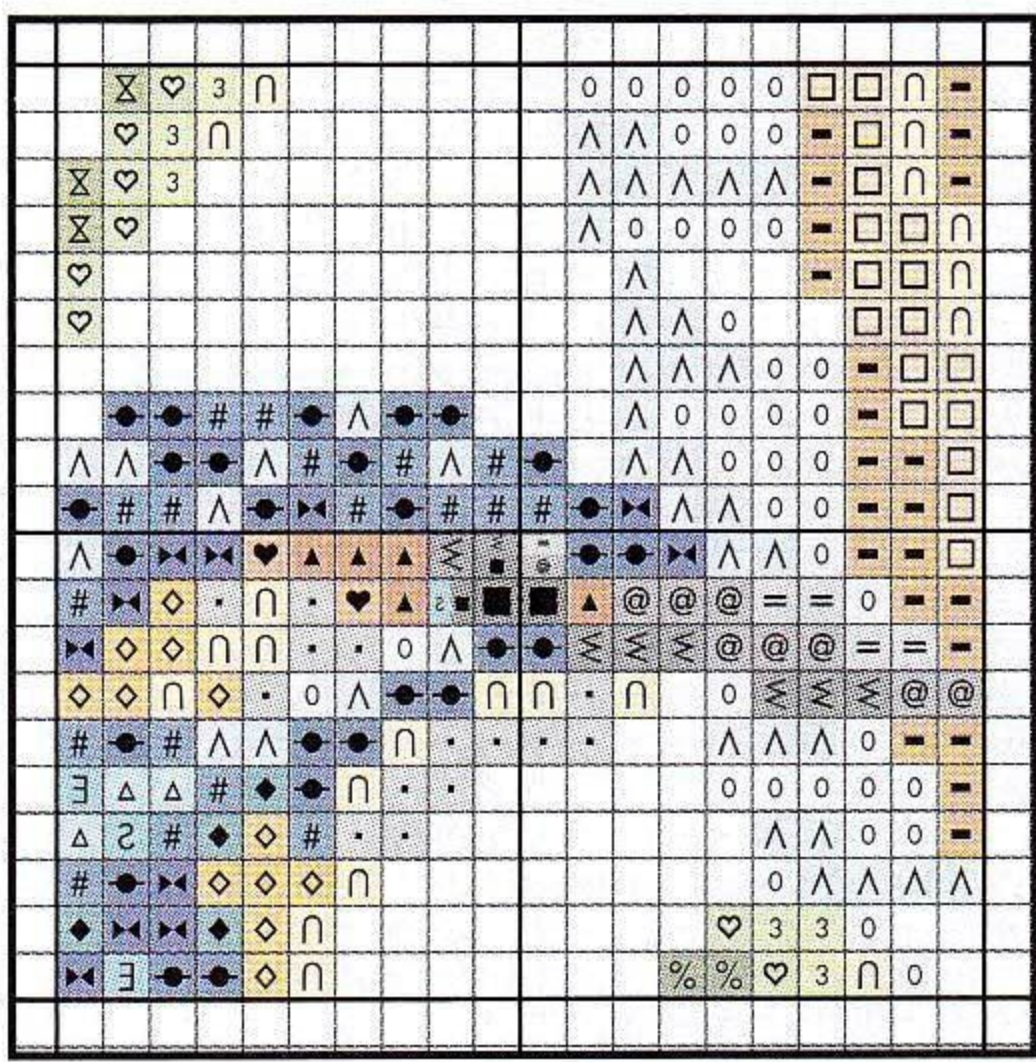
100 110 120 130 140 150 160 170 180 190

Shopping list...

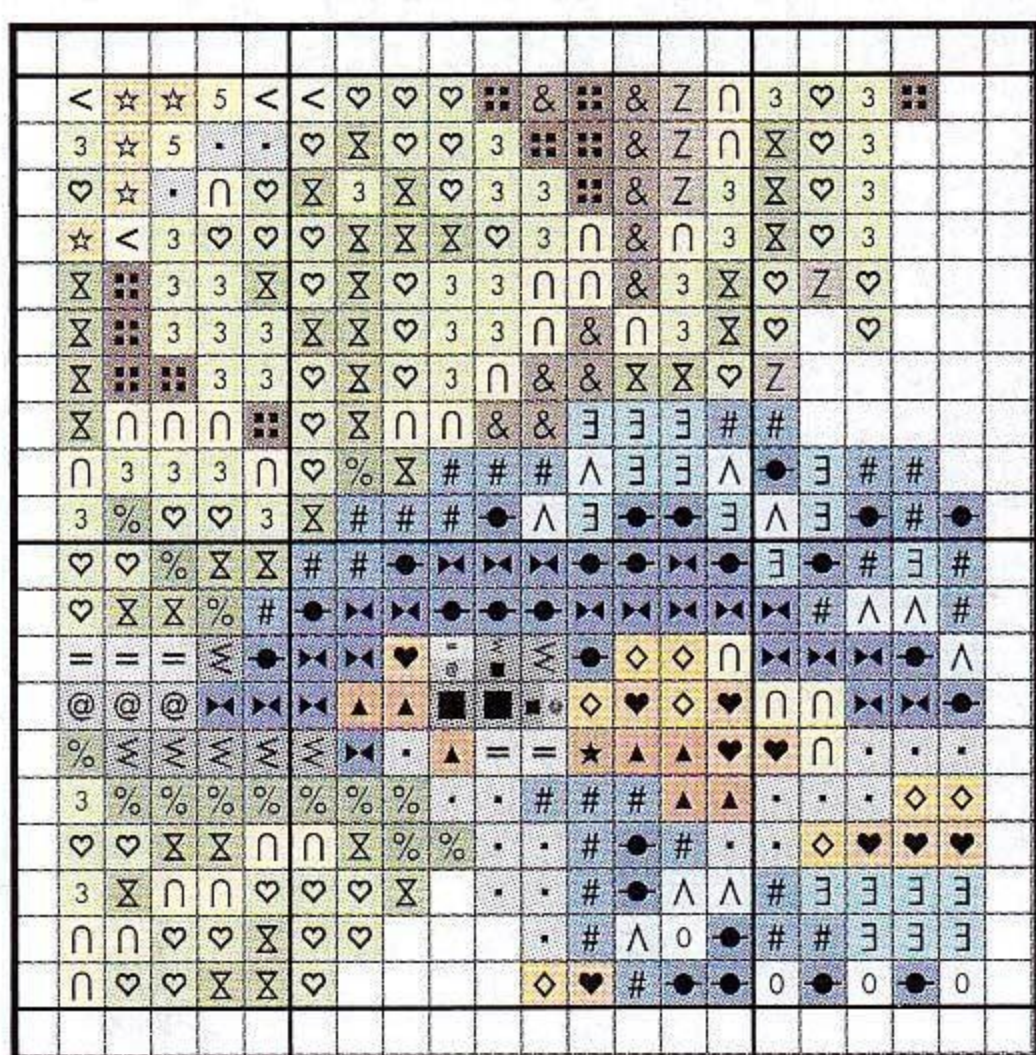
- ◆ 14HPI aida, white 22x18in (56x46cm) (or 28HPI evenweave)
- ◆ Anchor Stranded Cottons as listed in the key
- ◆ Frame with a 15¼x11½in (39x29cm) aperture, maple effect wood
- ◆ Turn to page 69 for hints and help!

Tension tip

Take care with your tension when working the long stitch. There are some areas, such as the leaf stems and the outlines of the bulrush stems where the stitches are quite long. If you don't pull the thread tightly enough it will sag across the fabric. Using a frame or hoop will solve this and make your tension correct.



Use these extra charts for seeing the areas where backstitch lines obscure the symbols for the stitches below



▶ Stitching the design

Fold your fabric in half both ways to find the centre and start stitching from this point. You can stitch in whichever order you prefer, but you will find it much easier when counting if you stitch one element of the design at a time. All the cross stitch is worked in two strands of Anchor stranded cotton over one thread of the aida fabric. Refer to the chart and key carefully as there are several similar colour shades used in this design.

The areas used to create shading or those that need a more subdued effect are worked in either one strand or two strands of half cross stitch. These are clearly indicated on the key and you should make sure that you work them all in the same direction for an even appearance. Take care that you work the correct stitches in one strand or two strands in order to achieve this carefully shaded effect.

Flash of bright feathers

Anchor	Colour
Cross stitch in two strands	
••	001 Bright white
☒☒	150 Navy blue
△△	160 Light blue
☒☒	161 Medium blue
##	162 Dark blue
◆◆	164 Very dark blue
△△	167 Light turquoise
☒☒	168 Medium turquoise
==	231 Light grey
@@	233 Medium grey
33	264 Very light leaf green (2)
♥♥	265 Light leaf green (2)
☒☒	266 Medium leaf green (2)
%%	268 Dark leaf green
<<	292 Light yellow
55	295 Dark yellow
nn	300 Pale yellow
☆☆	303 Light orange
◇◇	314 Medium orange
♥♥	324 Dark orange
\$\$	352 Mahogany
☒☒	401 Dark grey
■	403 Black
▲▲	1004 Dark brick
☆☆	1020 Light pink
00	1031 Pale blue
☐☐	1047 Light terracotta
—	1048 Light brick
☆☆	1049 Dark terracotta
◆◆	1066 Dark turquoise

Working the details

When you have finished all the cross stitch you can add the backstitch and long stitch details. You will see on the key that these two types of stitch are listed together. This is because the outlining is worked with a mixture of the two stitches, depending on what shape they are being worked round. Backstitch and long stitch are both stitched in the same basic way, with the only difference being that the long stitch is worked over more than one fabric thread. It's really important to count carefully when working the long stitches as you must cover several fabric squares. All the outlining is worked in one strand, just refer to the key to see which colours to place where.

Adding the French knots

The French knots are worked using two strands of Anchor cotton in the positions marked on the

Anchor	Colour
Cross stitch in two strands	
z/z	1084 Light brown
&&	1086 Medium brown
☒☒	1088 Dark brown
Half cross stitch in two strands	
☐☐	*160 Light blue
☐☐	*161 Medium blue
☒☒	*264 Very light leaf green
☒☒	*265 Light leaf green
~~	*300 Pale yellow
☐☐	875 Light green
☐☐	876 Medium green
☐☐	878 Dark green
>>	9159 Very light blue
Half cross stitch in one strand	
++	*160 Light blue
☒☒	*875 Light green
☒☒	*9159 Very light blue
Backstitch/long stitch in one strand	
—	*001 Bright white
all other outlines and details	
—	*150 Navy blue
kingfisher outlines and details	
—	*268 Dark leaf green
water lilies, leaves and stem outlines and details	
—	*300 Pale yellow
leaves, kingfisher and water lily outlines and details	