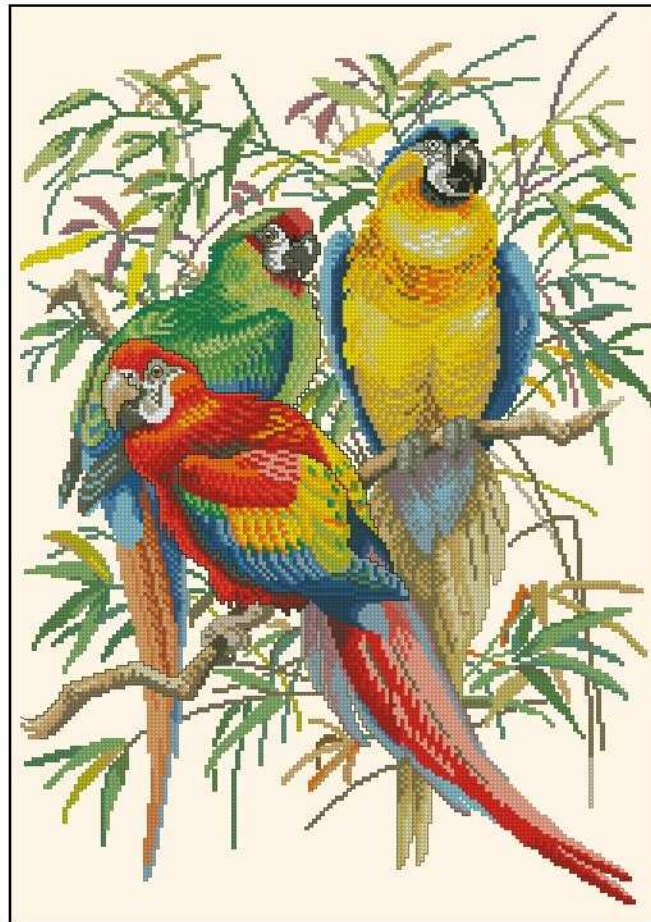
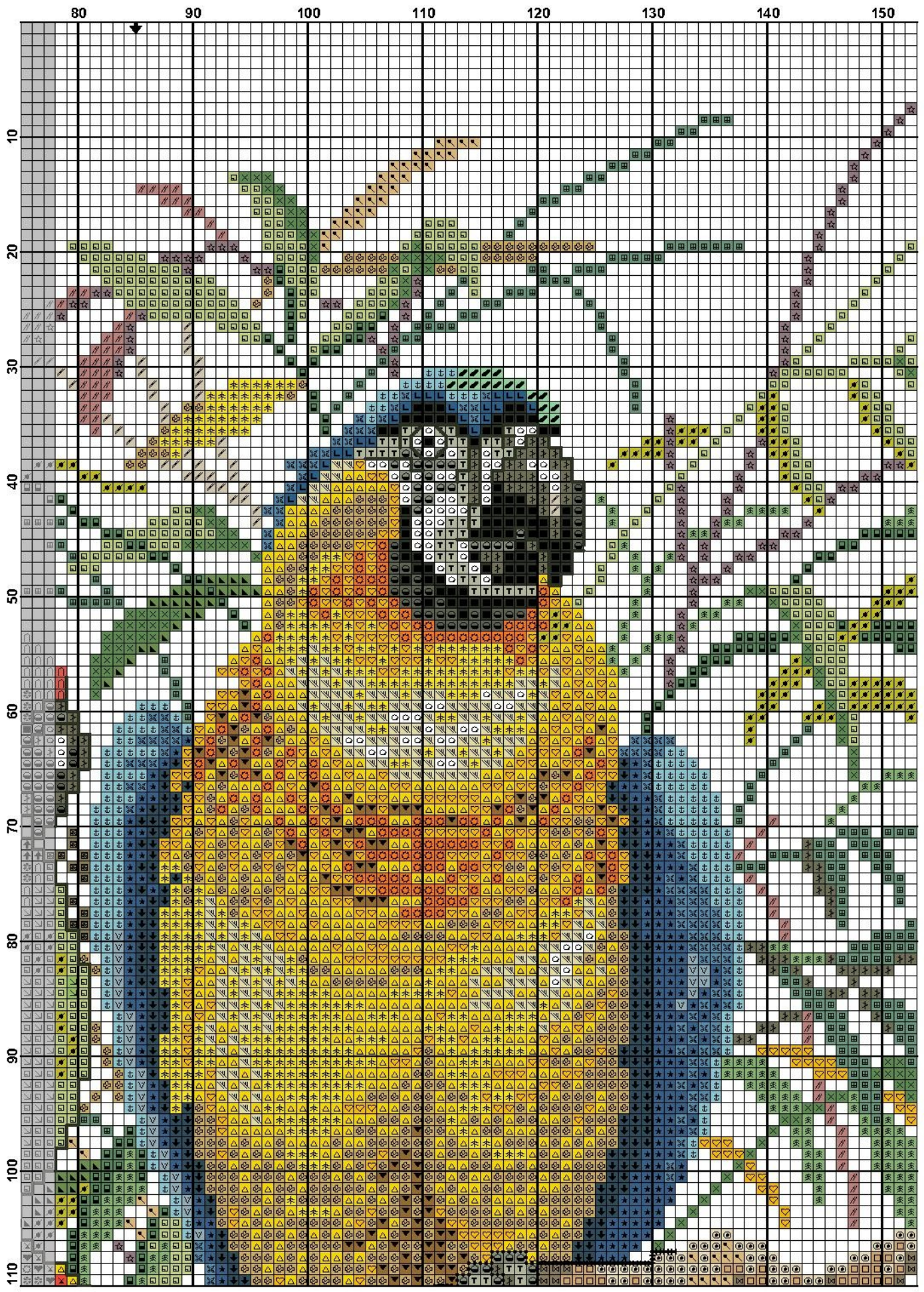
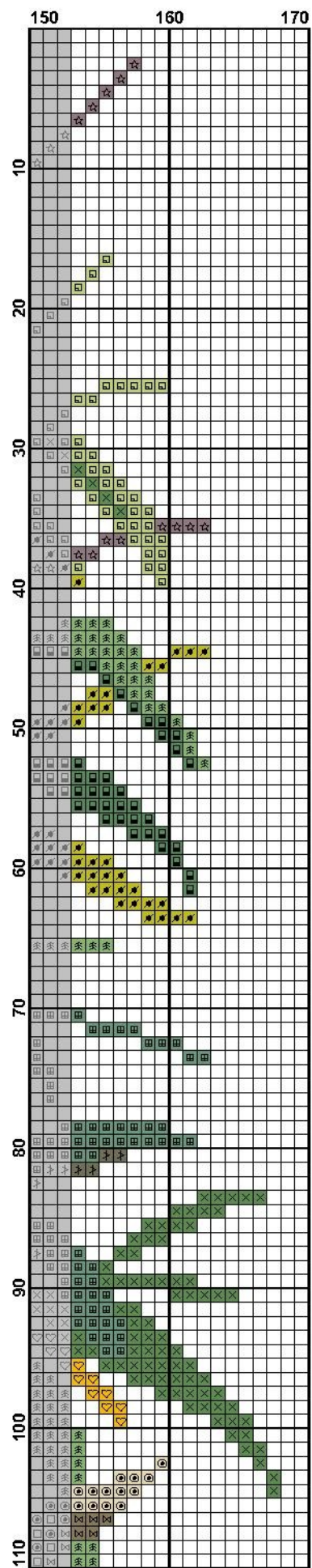


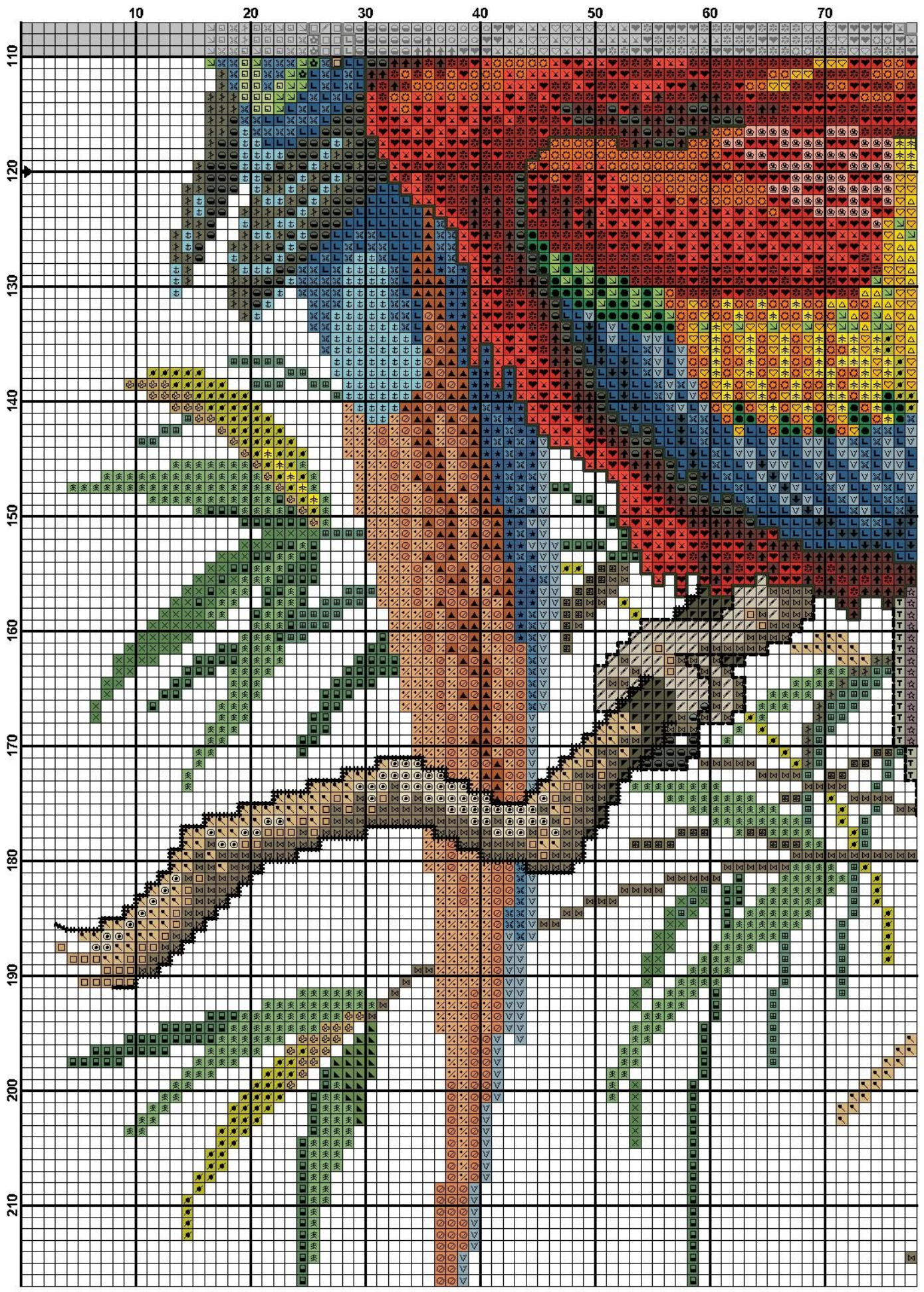


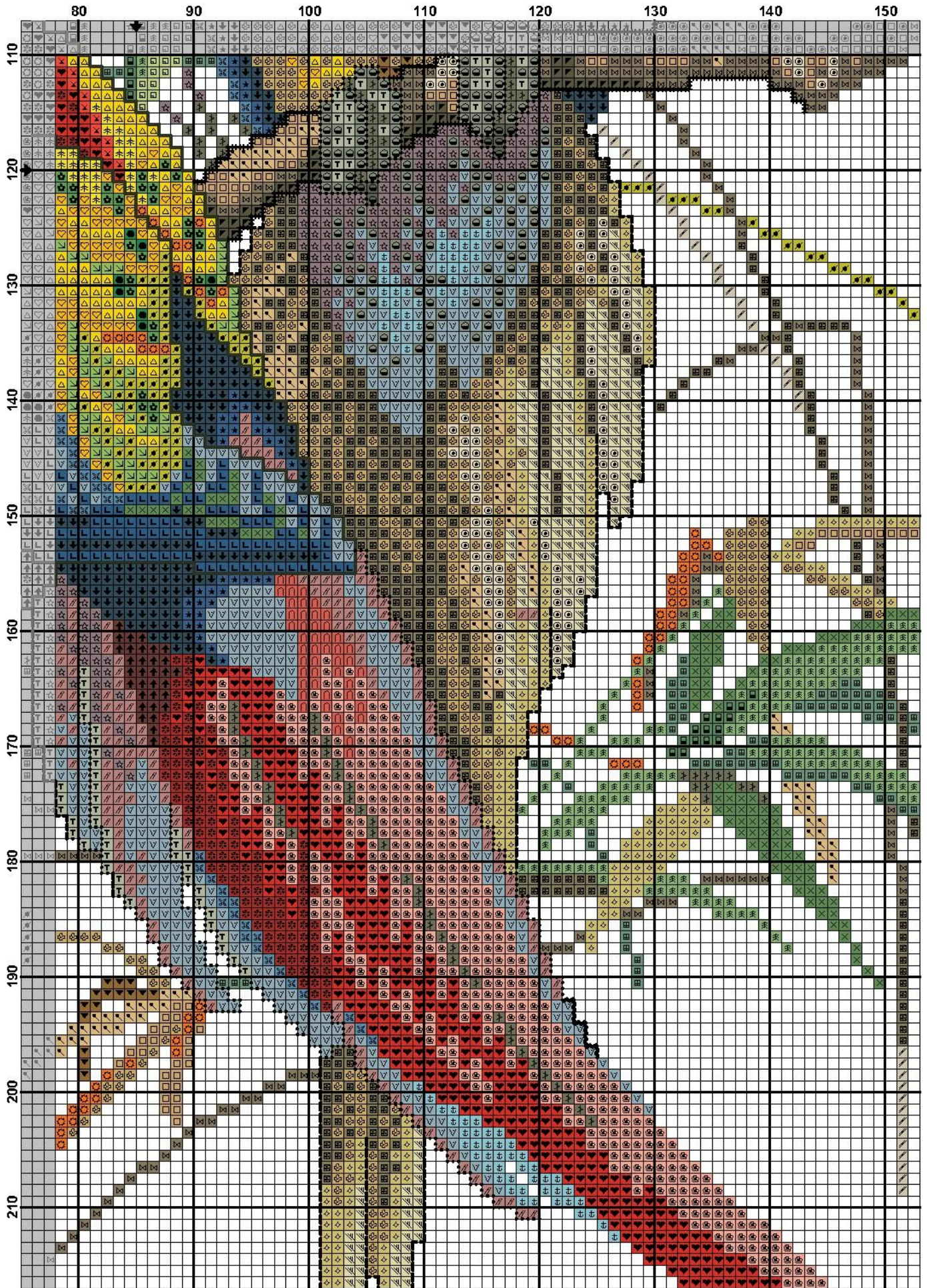
Symbol	Strands	Type	Number	Color
■ - - - -	1	DMC	3790	Beige Gray-UL DK

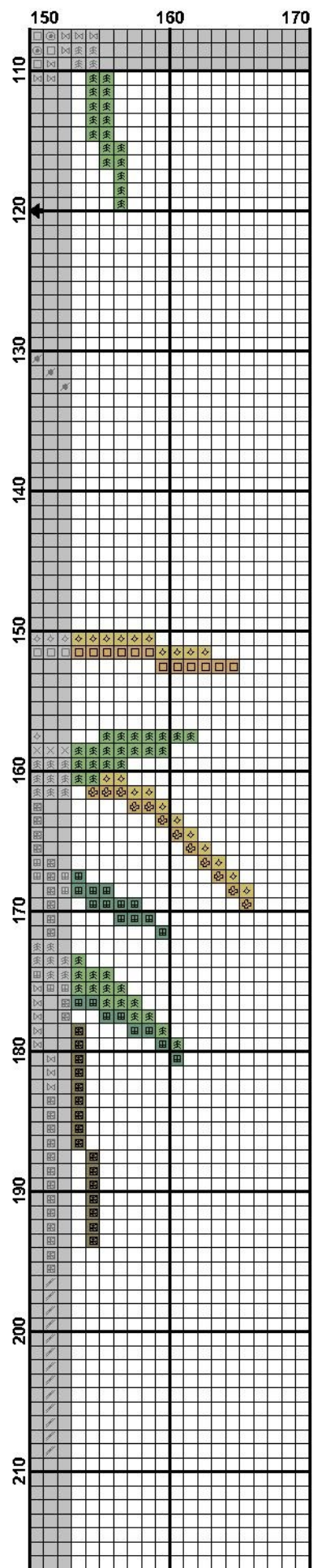


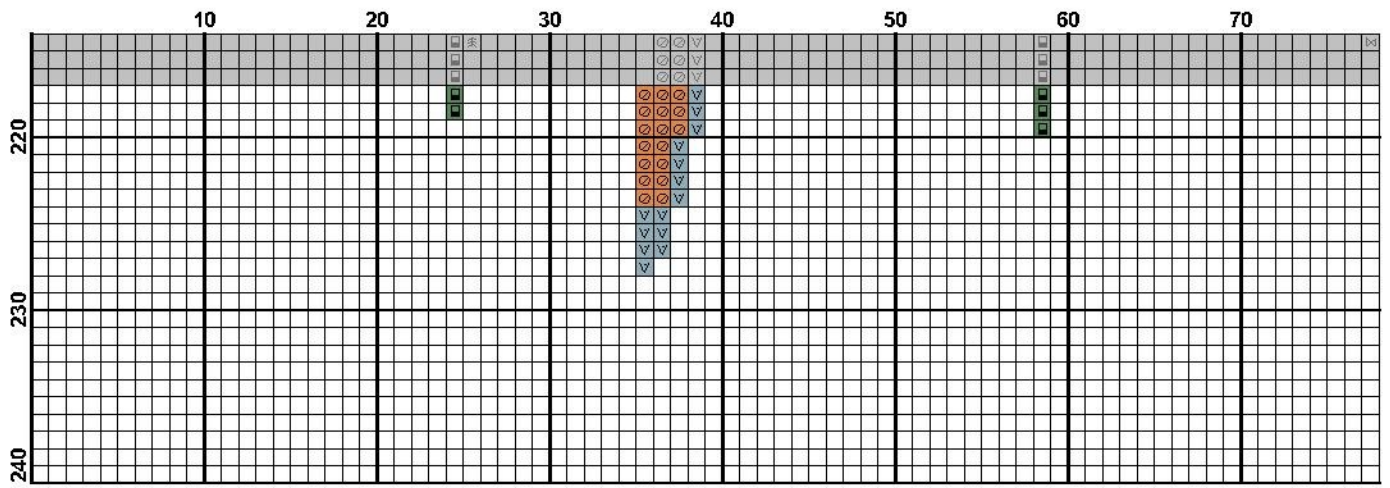




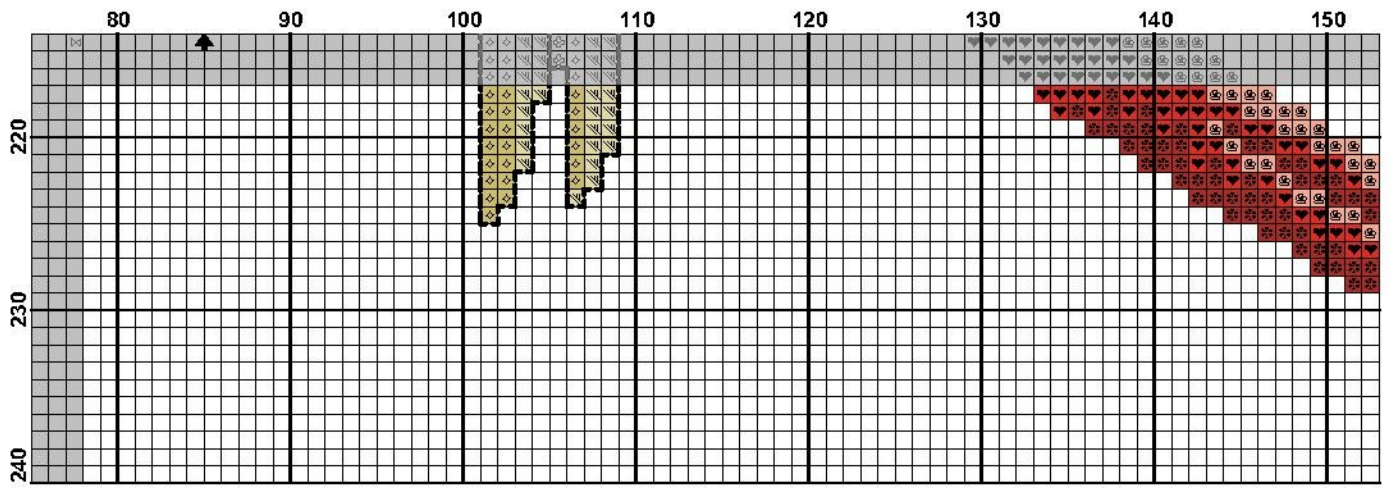


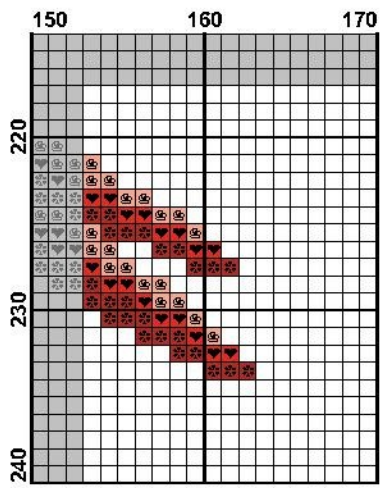












**Fabric:** Aida 14, Antique White  
165w X 232h Stitches  
**Size:** 14 Count, 29.94w X 42.09h cm

**Floss Used for Full Stitches:**

Symbol	Strands	Type	Number	Color
	2	DMC	166	Moss Green-MD LT
	2	DMC	223	Shell Pink-LT
	2	DMC	307	Lemon
	2	DMC	310	Black
	2	DMC	312	Baby Blue-VY DK
	2	DMC	350	Coral-MD
	2	DMC	352	Coral-LT
	2	DMC	367	Pistachio Green-DK
	2	DMC	402	Mahogany-VY LT
	2	DMC	434	Brown-LT
	2	DMC	436	Tan
	2	DMC	437	Tan-LT
	2	DMC	444	Lemon-DK
	2	DMC	472	Avocado Green-UL LT
	2	DMC	502	Blue Green
	2	DMC	606	Bright Orange-Red
	2	DMC	608	Bright Orange
	2	DMC	611	Drab Brown
	2	DMC	646	Beaver Gray-DK
	2	DMC	677	Old Gold-VY LT
	2	DMC	702	Kelly Green
	2	DMC	704	Chartreuse-BRT
	2	DMC	729	Old Gold-MD
	2	DMC	739	Tan-UL VY LT
	2	DMC	740	Tangerine
	2	DMC	817	Coral Red-VY DK
	2	DMC	834	Golden Olive-VY LT
	2	DMC	842	Beige Brown-VY LT
	2	DMC	844	Beaver Brown-UL DK
	2	DMC	902	Garnet-VY DK
	2	DMC	910	Emerald Green-DK
	2	DMC	920	Copper-MD
	2	DMC	922	Copper-LT
	2	DMC	932	Antique Blue-LT
	2	DMC	954	Nile Green
	2	DMC	972	Canary-DK
	2	DMC	987	Forest Green-DK
	2	DMC	989	Forest Green
	2	DMC	3021	Brown Gray-VY DK
	2	DMC	3023	Brown Gray-LT
	2	DMC	3041	Antique Violet-MD
	2	DMC	3346	Hunter Green
	2	DMC	3750	Antique Blue-VY DK
	2	DMC	3760	Wedgewood-MD
	2	DMC	3766	Peacock Blue-LT
	2	DMC	3787	Brown Gray-DK
	2	DMC	3790	Beige Gray-UL DK
	2	DMC	3842	Wedgewood-DK
	2	DMC	BLANC	White

**Floss Used for Back Stitches:**

Symbol	Strands	Type	Number	Color
	1	DMC	223	Shell Pink-LT
	1	DMC	310	Black
	1	DMC	472	Avocado Green-UL LT
	1	DMC	844	Beaver Brown-UL DK
	1	DMC	3021	Brown Gray-VY DK