

# HANDS ON DESIGN

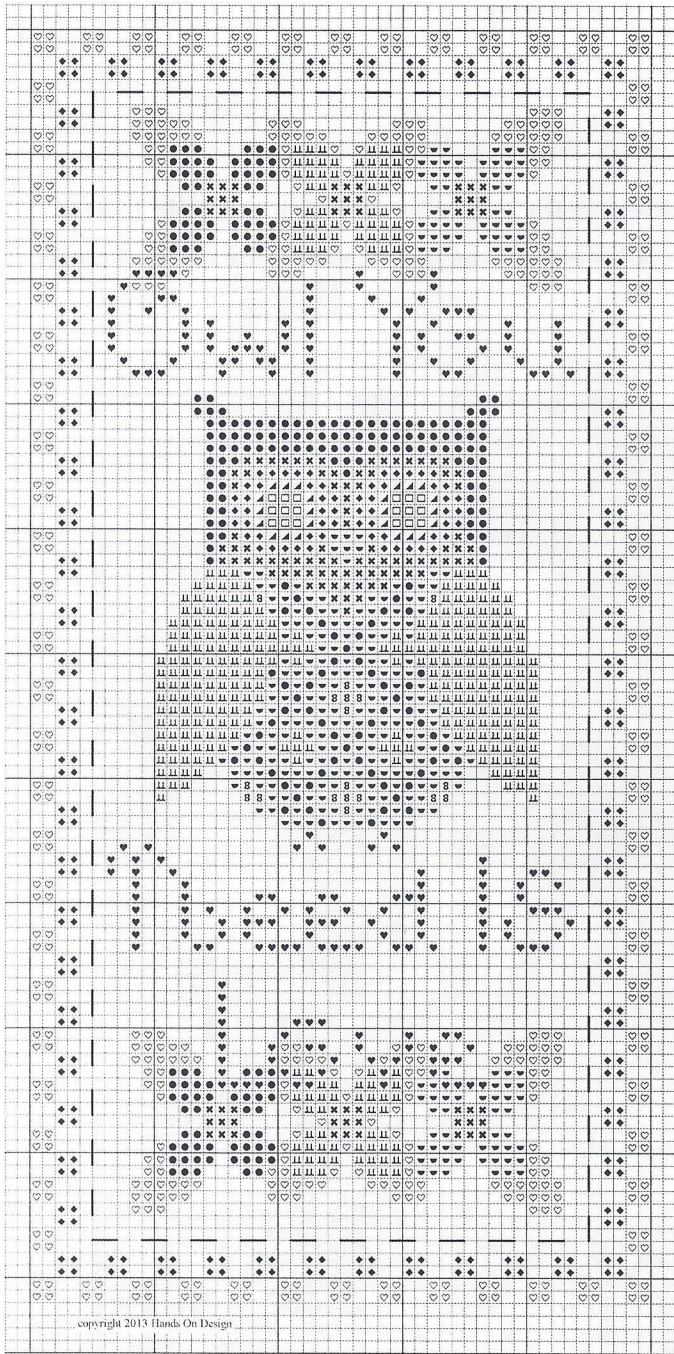
*a Habermann company*



## hd-1 Owl Love

*Owl Always Love You*





copyright 2013 Hands On Design

Copyright 2013 Hands On Design

# Owl Love, Argyle Owl Banner

- 2 over 2 on 30ct WDW Scuppernong
- The checkerboard border was stitched in Smyrna crosses over 4.

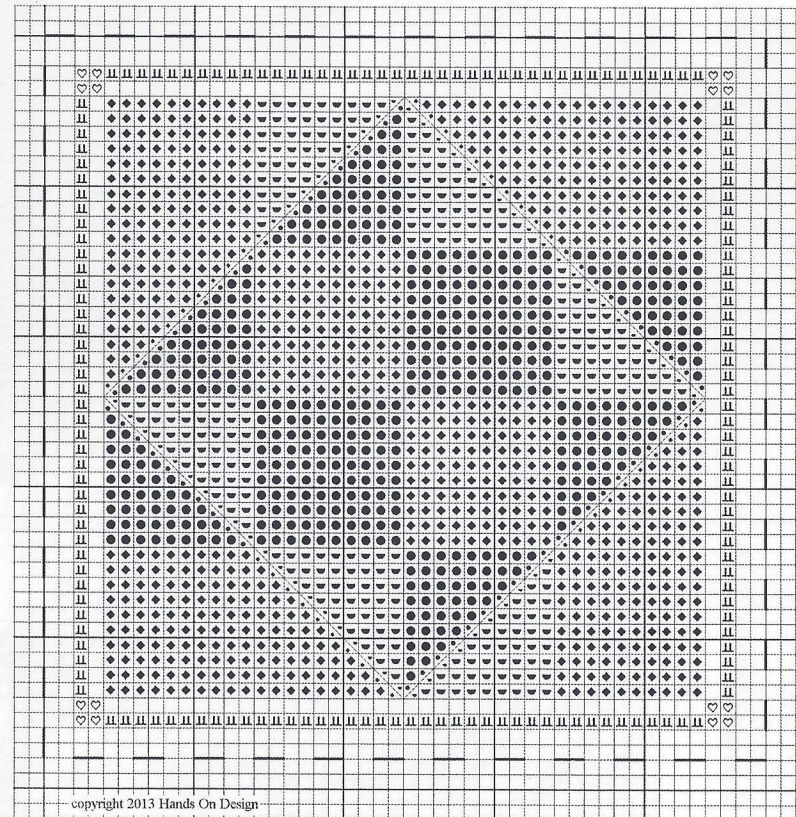
I finished the Argyle Owl as a banner with woolfelt embellishments. (see picture) I found this great Ackfield Manufacturing hanger at my local quilt shop.

- Hazelnut (400)
- ▲ Morning Glory (827)
- ♡ Steamed Broccoli (3362)
- ≡ Bluecoat Red (3832)
- Bluejay (334)
- ◆ Daffodil (3819)
- ✕ Snowball (blanc)
- ♥ Onyx (310)
- 8 Punchberry (210)
- ◐ Orange Marmalade (722)

## So What's with the Quilt Square?

So glad you asked! I have always wanted a tree decorated with lots of "quilty" type ornaments...so I am going to design & stitch a companion quilt square for many of my designs. Since the "blocks" come out evenly in this one, I stitched it with Smyrna crosses over 4 threads (compensating on the diagonal.) I love the Smyrna Cross, so you better get used to them! It was flat finished as an ornament!

Enjoy, Cathy



copyright 2013 Hands On Design



# hd-1 Owl Love: Owl Always Love You, box

- 2 over 2 on 30ct WDW Scuppernong, attach Hillcreek Designs heart buttons provided with matching floss

I finished this as a weighted box but instead of the usual ribbon surround, I continued the "owl hiding in the tree" theme. Using woolfelt, I cut a length of brown (cut on the diagonal with a pinking rotary blade) and pinned it into place with cool green leaves placed randomly on the branch. Wool & woolfelt are fun embellishments for all sorts of needlework finishes.

