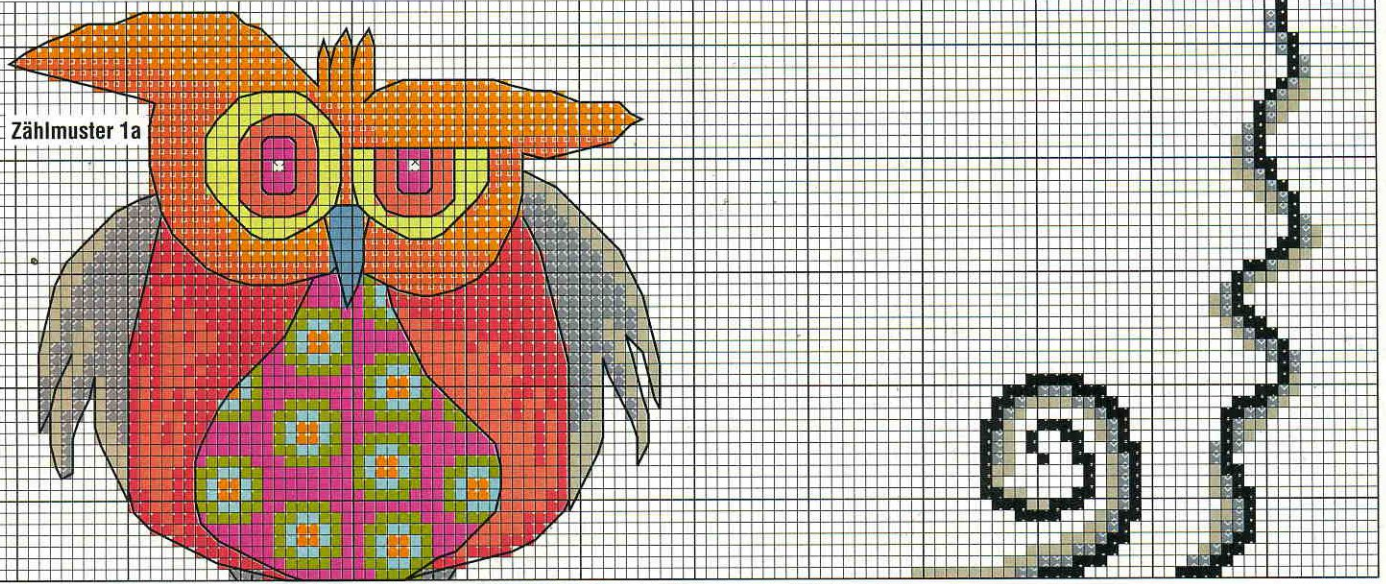
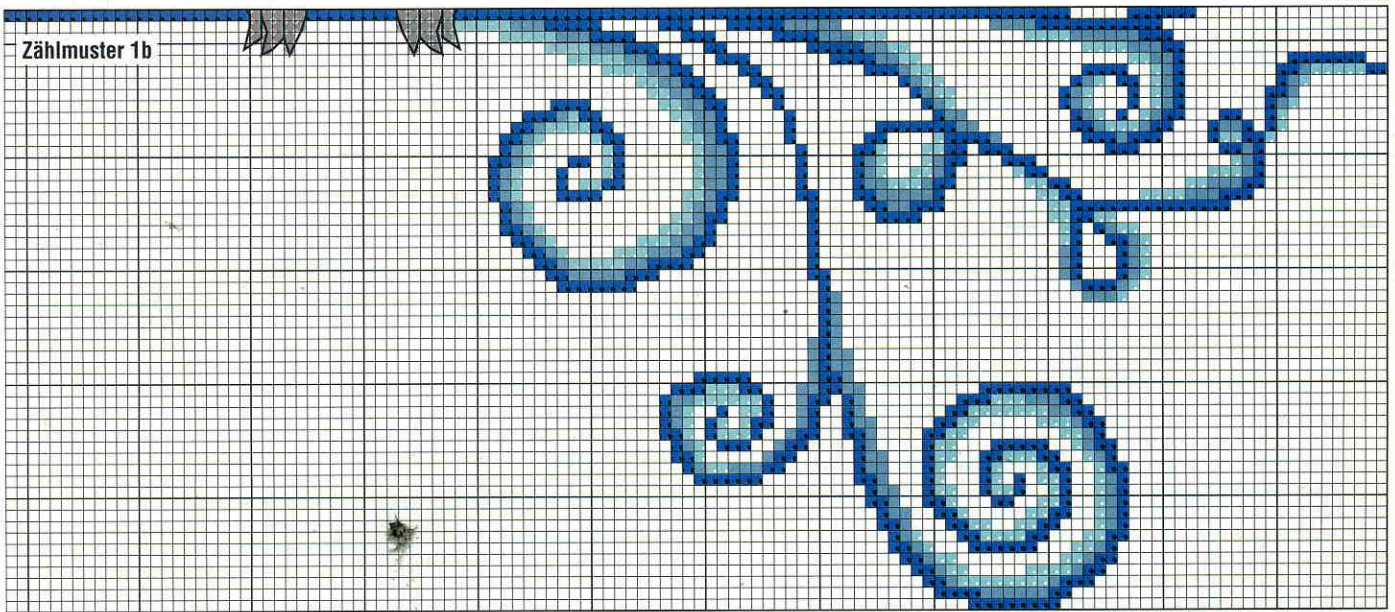


Zählmuster 1a



Zählmuster 1b

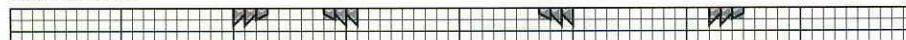


www.bordadopontocruz.com.br

Zählmuster 2a



Zählmuster 2b



Zeichenerklärung zu den Modellen von Seite 4-9

Anzahl Stränge	Kissen I	Kissen II	Set I	Set II
☐ = rohweiß (Fb 2)	1 x	1 x	1 x	1 x
■ = mittl Orange (Fb 304)	1 x	1 x	1 x	1 x
■ = orange (Fb 925)	1 x	-	1 x	-
■ = rot (Fb 9046)	-	1 x	-	1 x
■ = helles Koralle (Fb 9)	1 x	1 x	1 x	1 x
■ = koralle (Fb 10)	1 x	1 x	1 x	1 x
■ = pink (Fb 62)	1 x	1 x	1 x	1 x
■ = erika (Fb 89)	-	1 x	-	1 x
■ = dunkelrot (Fb 72)	-	1 x	-	1 x
■ = helles Gelbgrün (Fb 254)	1 x	1 x	1 x	1 x
■ = gelbgrün (Fb 255)	1 x	1 x	1 x	1 x
■ = hellblau (Fb 160)	1 x	1 x	1 x	1 x
■ = mittelblau (Fb 977)	1 x	1 x	1 x	1 x
■ = blau (Fb 162)	1 x	1 x	1 x	1 x
■ = hellgrau (Fb 232)	1 x	1 x	1 x	1 x
■ = grau (Fb 233)	1 x	1 x	1 x	1 x
■ = dunkelgrau (Fb 400)	1 x	1 x	1 x	1 x

— = Steppstiche in Dunkelgrau

— = Steppstiche in hellem Gelbgrün

□ = türkis- bzw schlammfarbener Stickgrund

1 Kästchen = 1 Kreuzstich,
3fädig über 2 x 2 Gewebefäden, Steppstiche, 2fädig