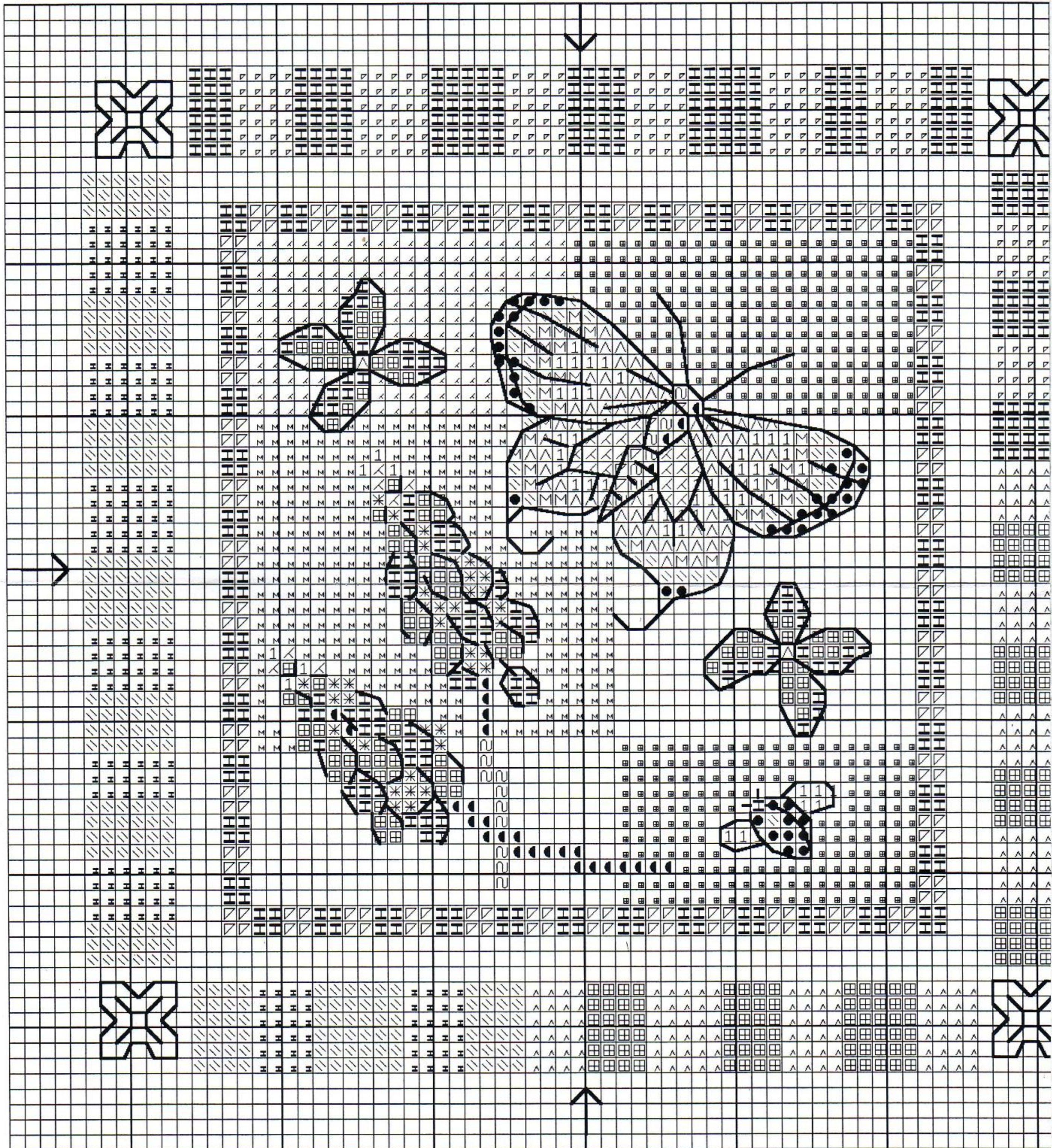


Little cushion with lady bird and butterfly

XC11

©2004

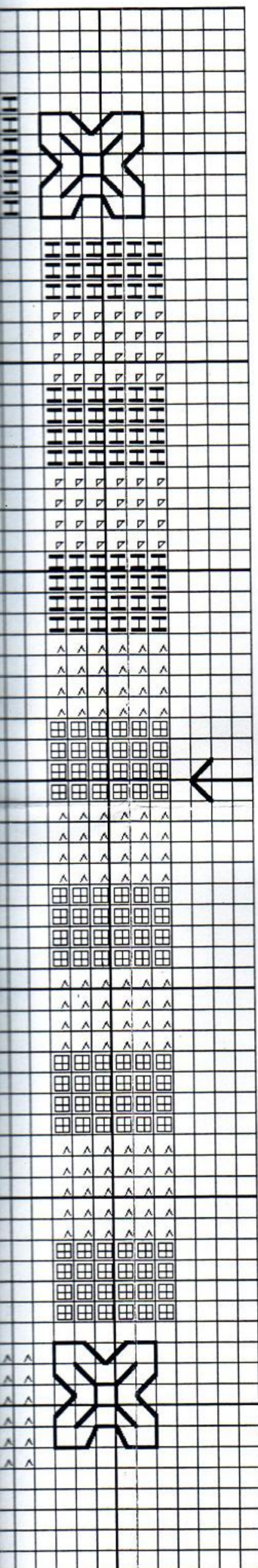
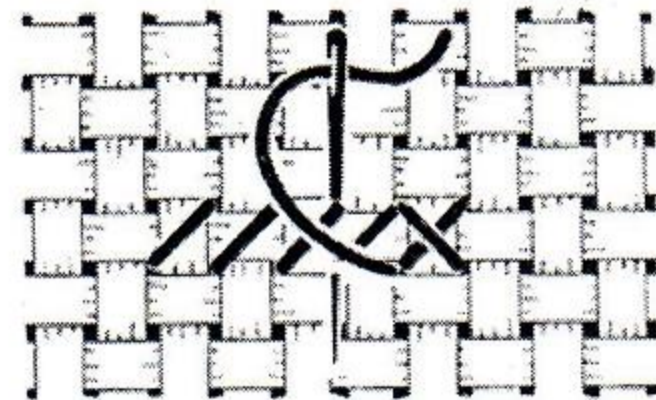


KC1119A

ART 117

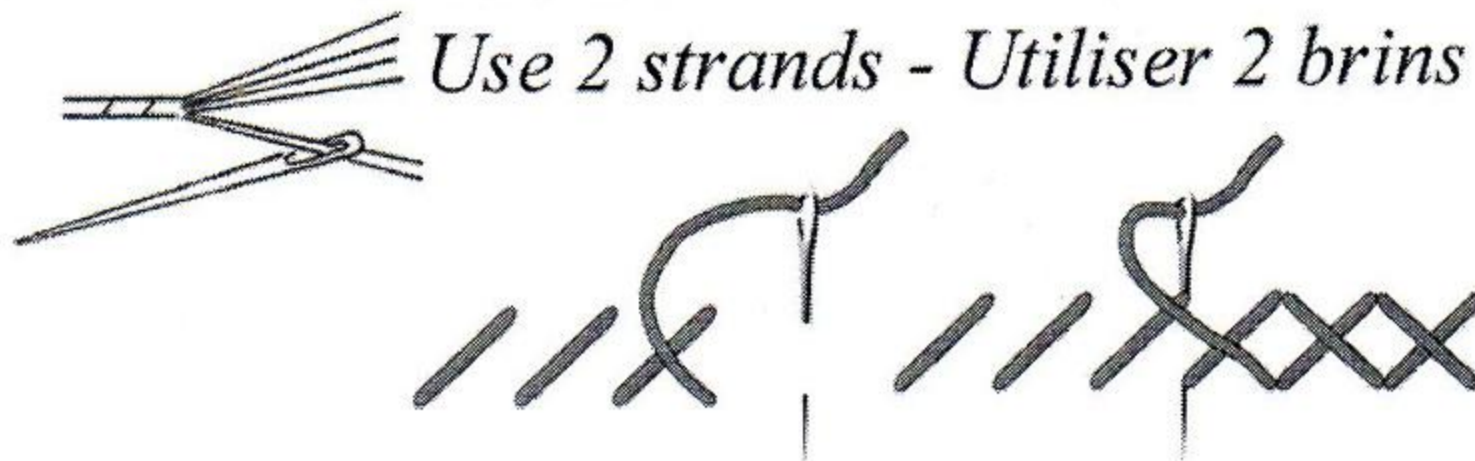
DMC 6 strand embroidery floss

Mouliné Spécial DMC



Cross Stitch - Point de Croix

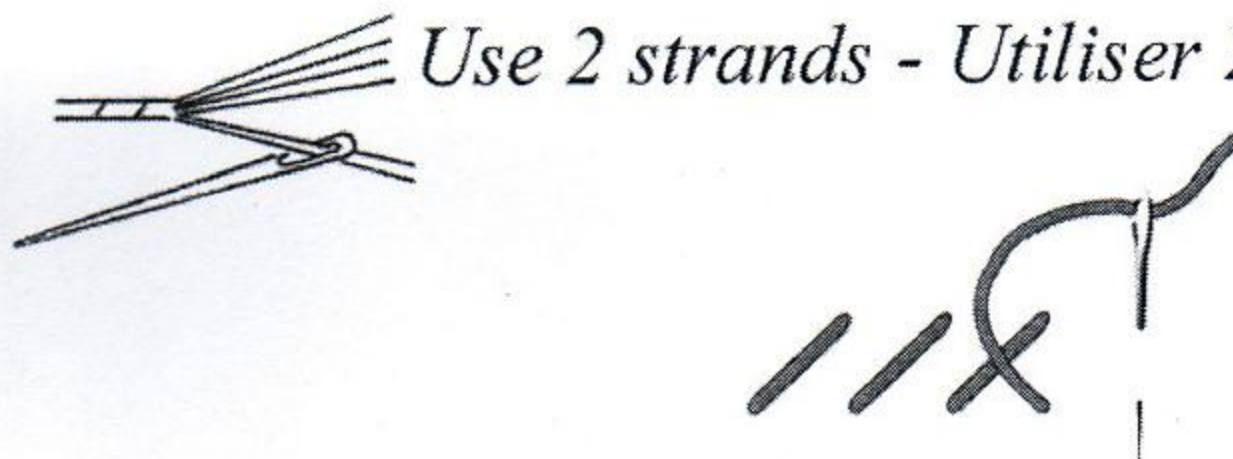
Use 2 strands - Utiliser 2 brins



1	^^	3855	5	uu	562	9	**	155
2	11	3823	6	••	505	10	MM	153
3	<<	369	7	≡≡	3807	11	≡≡	3608
4	∇∇	563	8	▣▣	794	12	••	3607

Half Stitch - Demi-Point

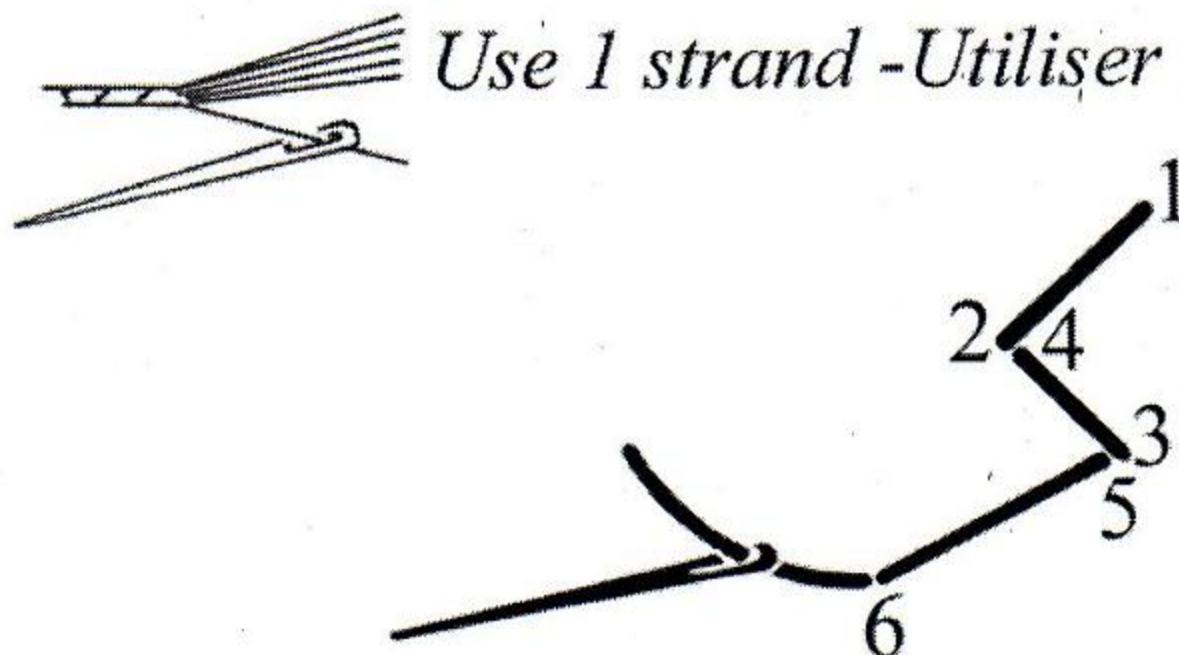
Use 2 strands - Utiliser 2 brins



1	^^	3855
3	<<	369
4	∇∇	563
7	≡≡	3807
8	▣▣	794
10	≡≡	153

Straight Stitch - Point Lancé

Use 1 strand - Utiliser 1 brin



7 — 3807