

ART 117MC

DMC 6 Strand embroidery floss.

Mouliné Spécial DMC

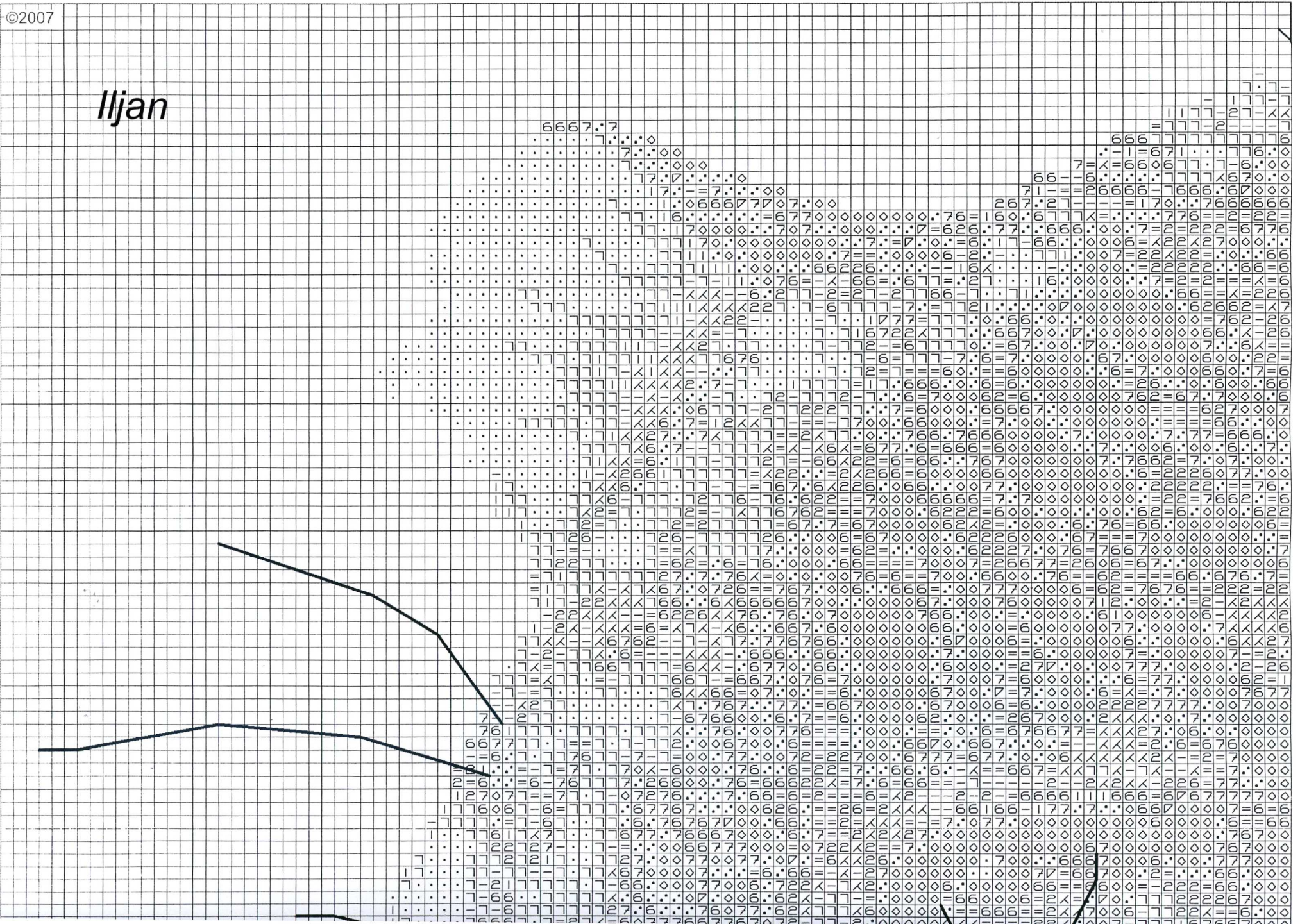
Vantage Point / Profil de Panthère

BK265

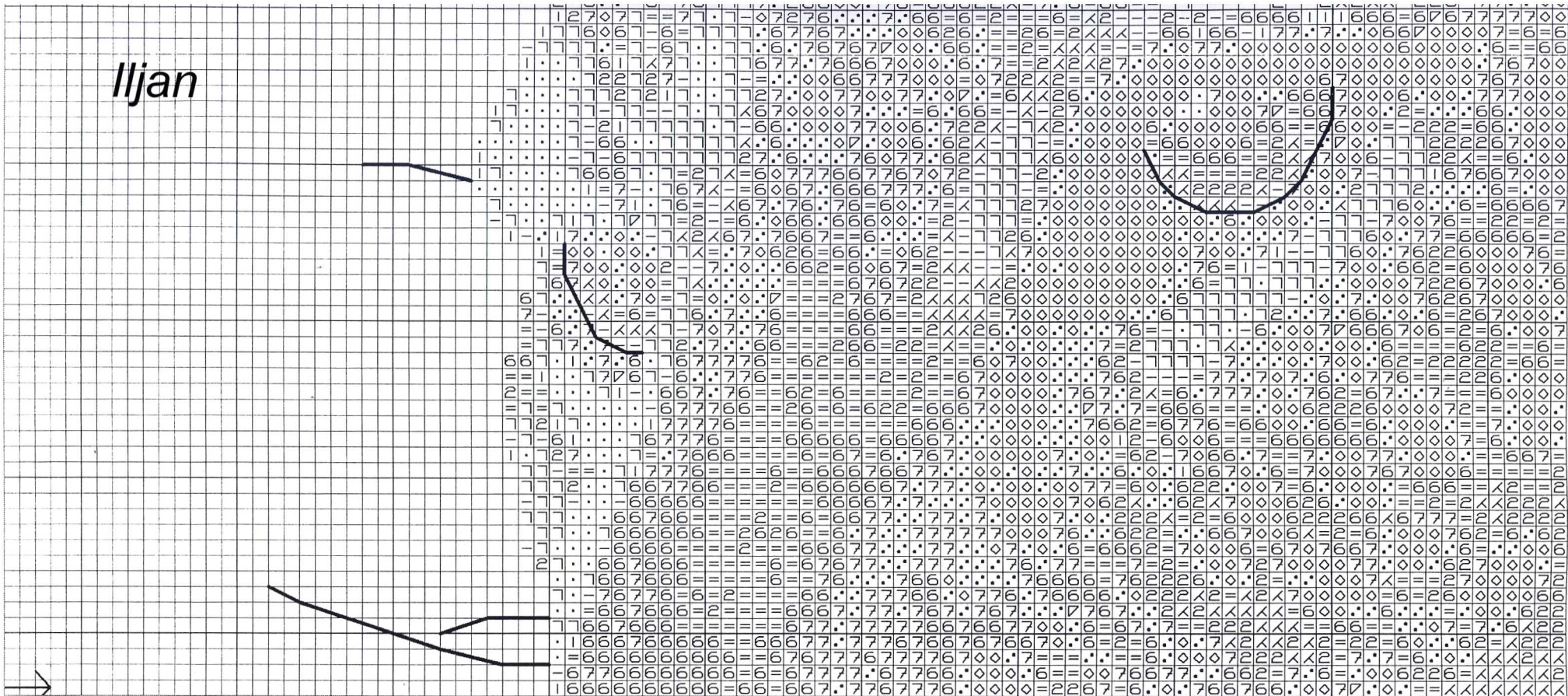
1/4

©2007

Iljan

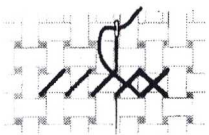


Iljan



1	2
3	4





ART 117MC

DMC 6 Strand embroidery floss.

Mouliné Spécial DMC

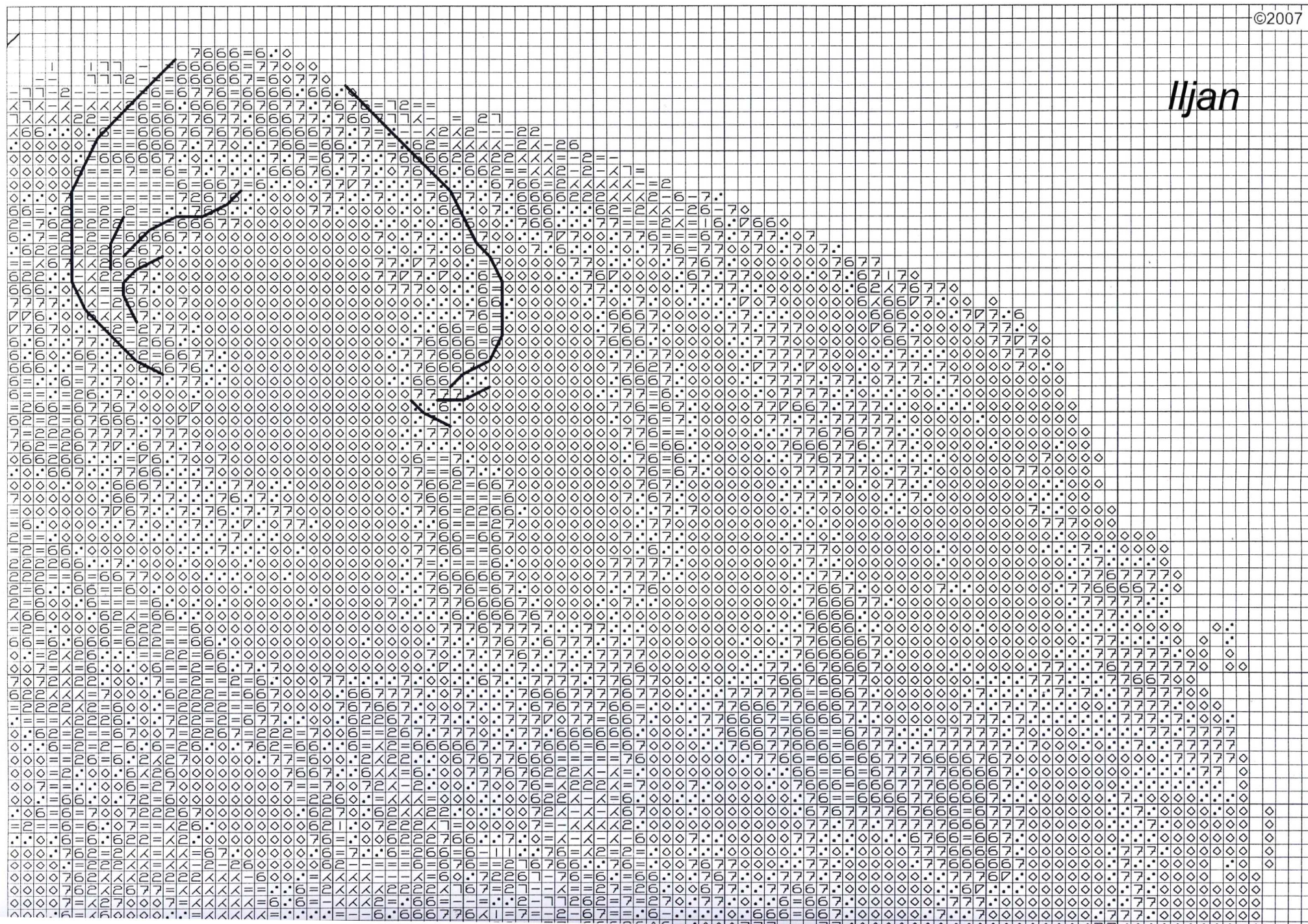
Vantage Point / Profil de Panthère

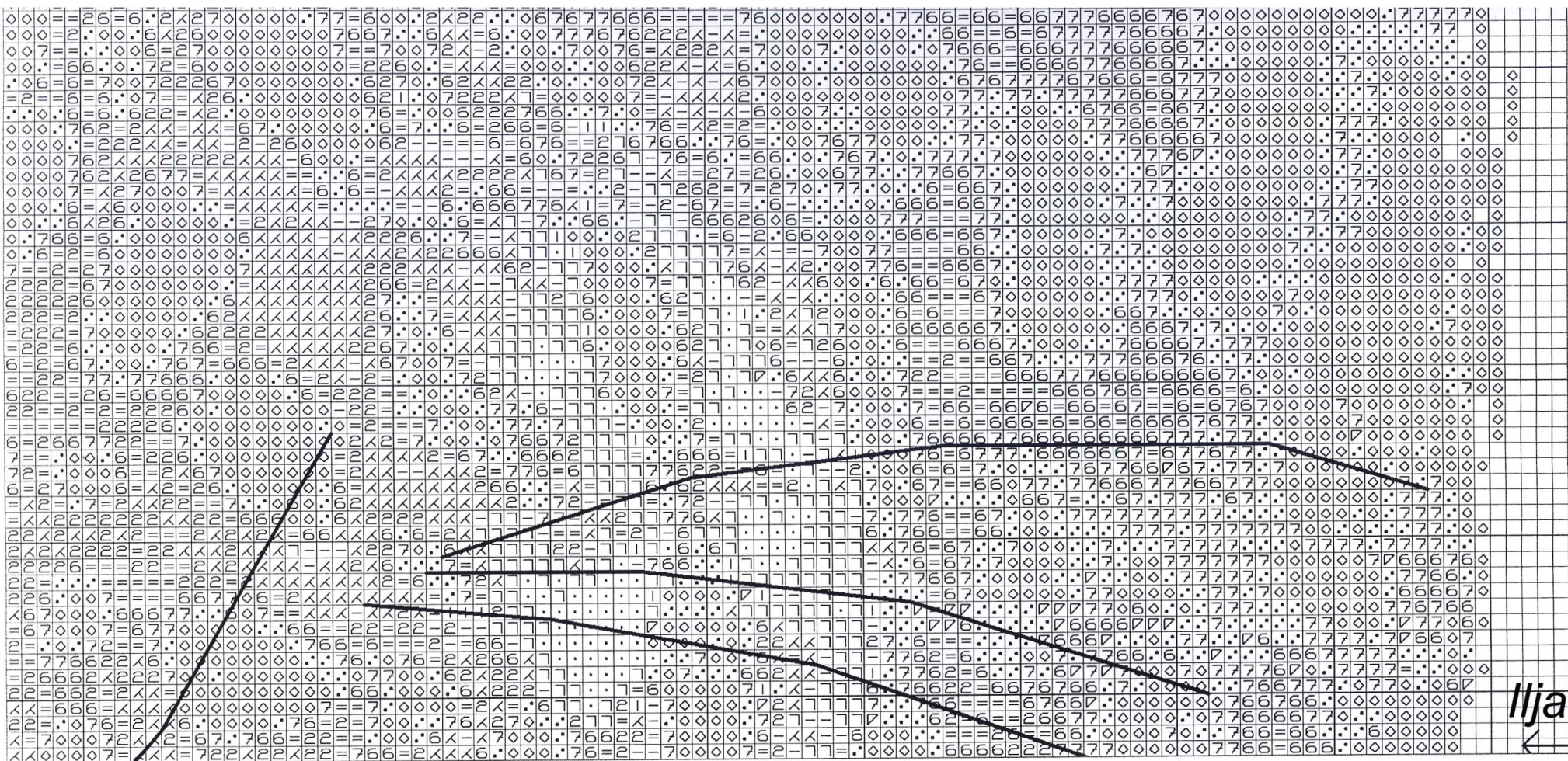
BK265

2/4

©2007

Iljan

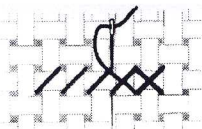




Iljan ←

1	2
3	4





ART 117MC

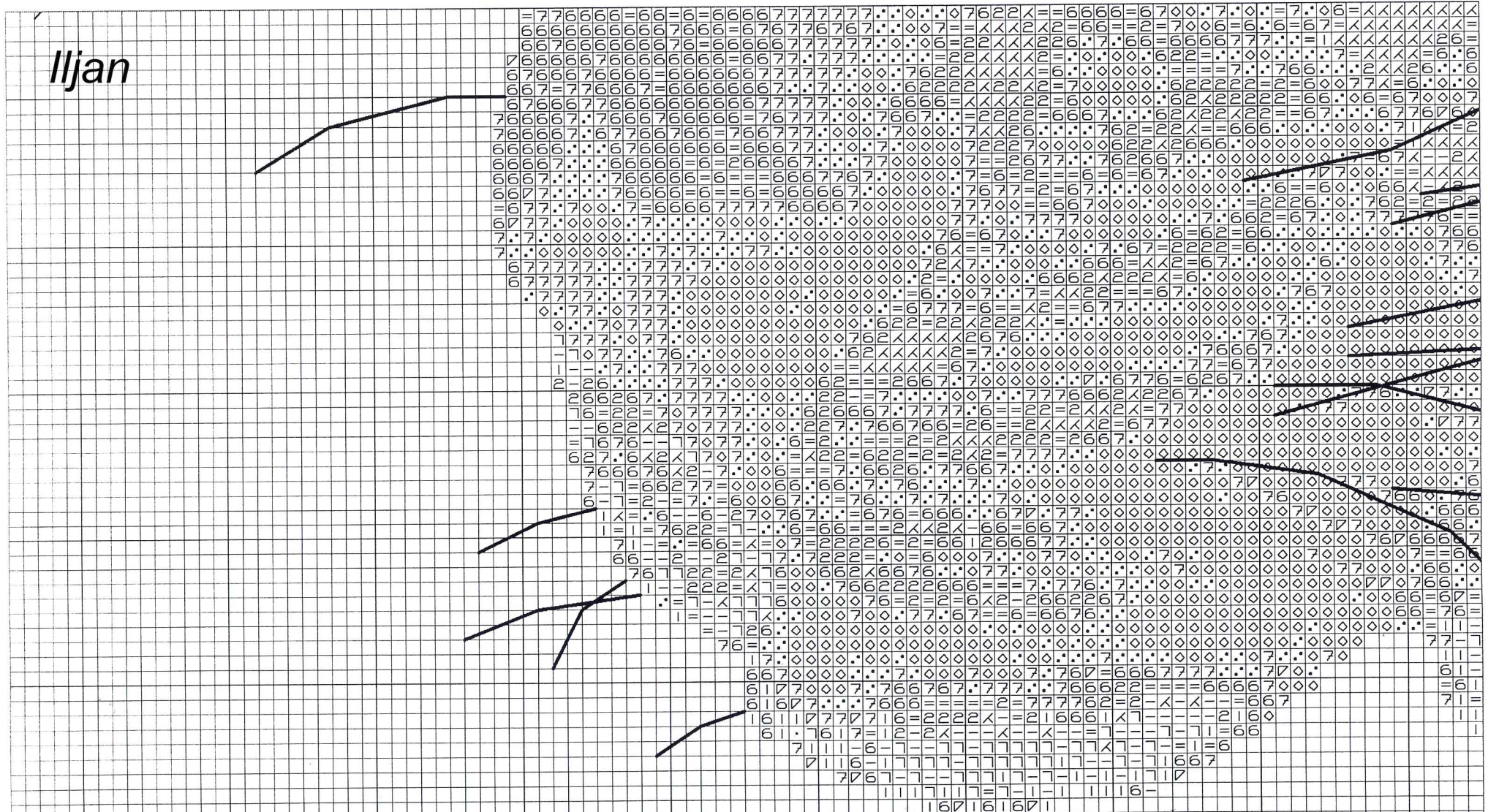
DMC 6 Strand embroidery floss.

Mouliné Spécial DMC

Vantage Point / Profil de Panthère

BK265

Iljan

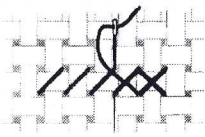


Iljan

©2007



1	2
3	4



ART 117MC

DMC 6 Strand embroidery floss.

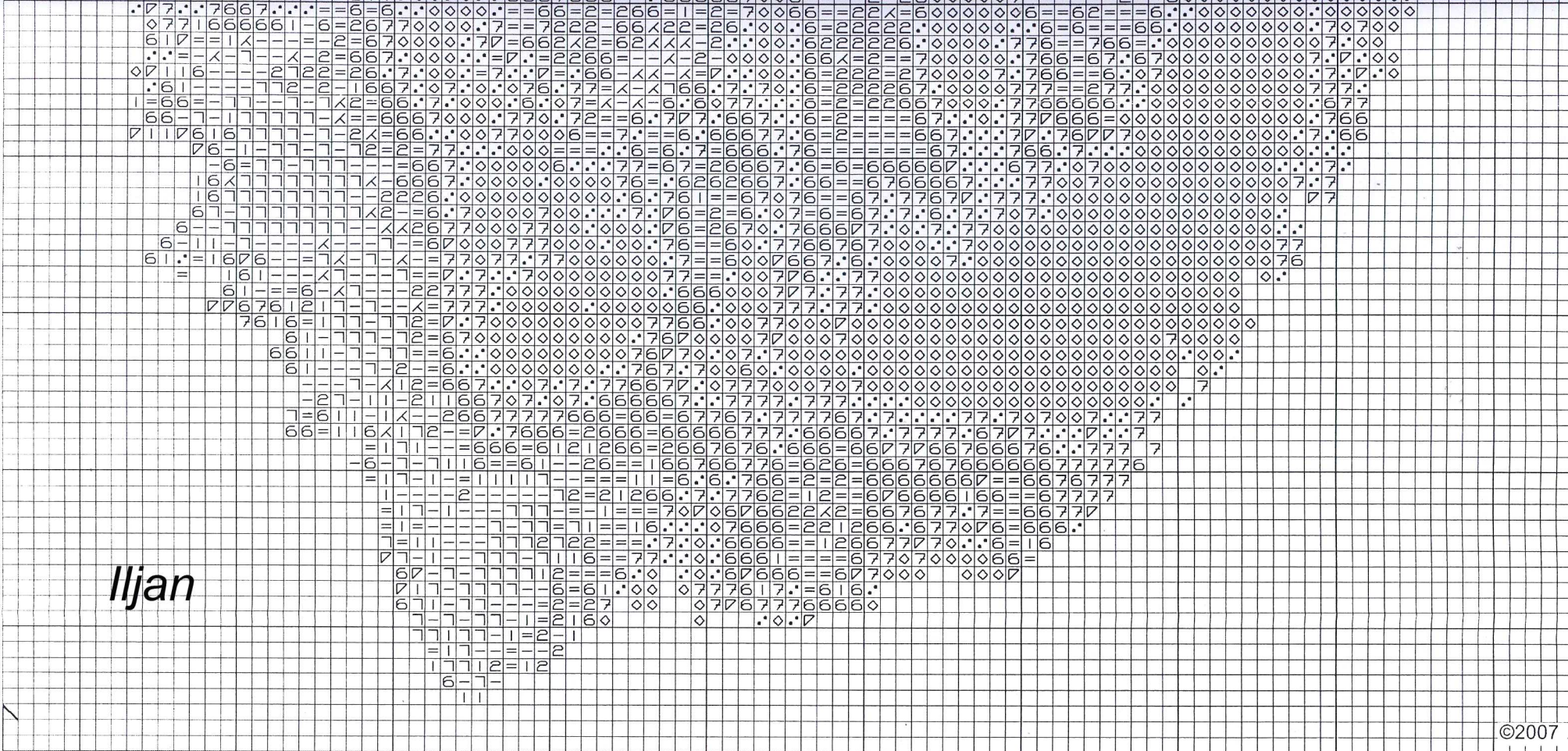
Mouliné Spécial DMC

Vantage Point / Profil de Panthère

BK265



Iljan



©2007

Cross Stitch - Point de Croix.

Use 2 strands - Utiliser 2 brins



- | | | | |
|----|-----------|----|-------------|
| ◇◇ | DMC : 310 | == | DMC : 677 |
| 22 | DMC : 422 | 77 | DMC : 712 |
| 66 | DMC : 611 | ∴ | DMC : 844 |
| ∇∇ | DMC : 640 | ∵ | DMC : 3046 |
| == | DMC : 642 | 77 | DMC : 3787 |
| | DMC : 644 | :: | DMC : Blanc |

Back Stitch - Point de Piqûre

Use 1 strand - Utiliser 1 brin



— DMC : B5200

1	2
3	4

