

©2007

112 ↕

A

B

SA STUDY

— 844

— 844

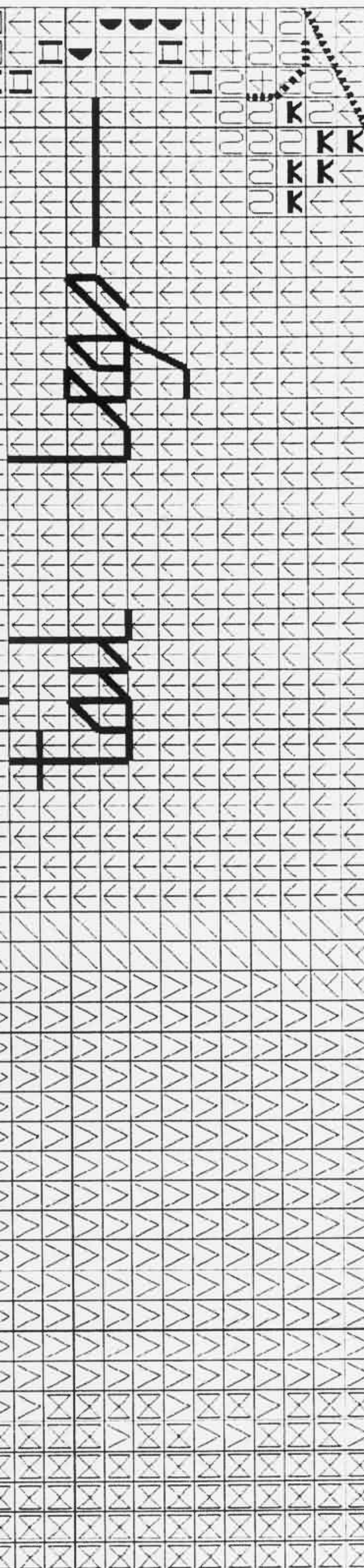
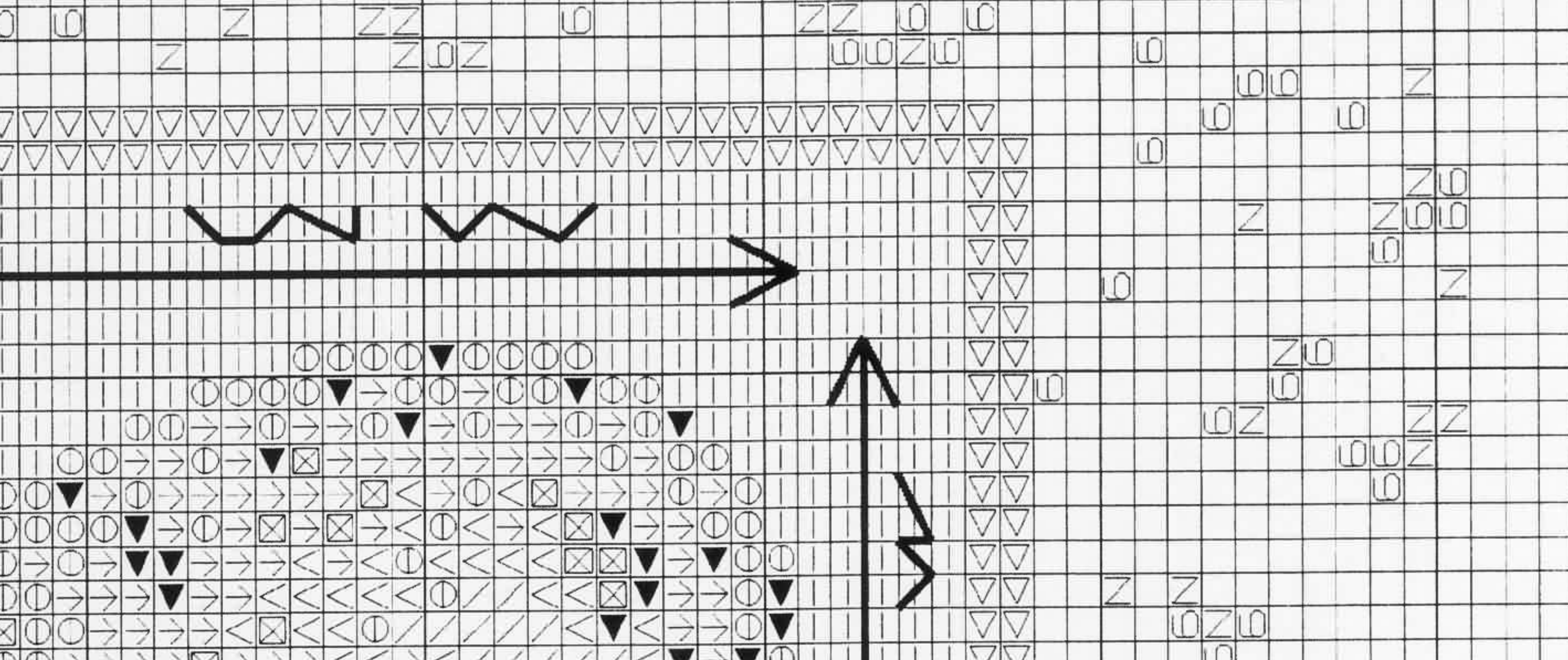
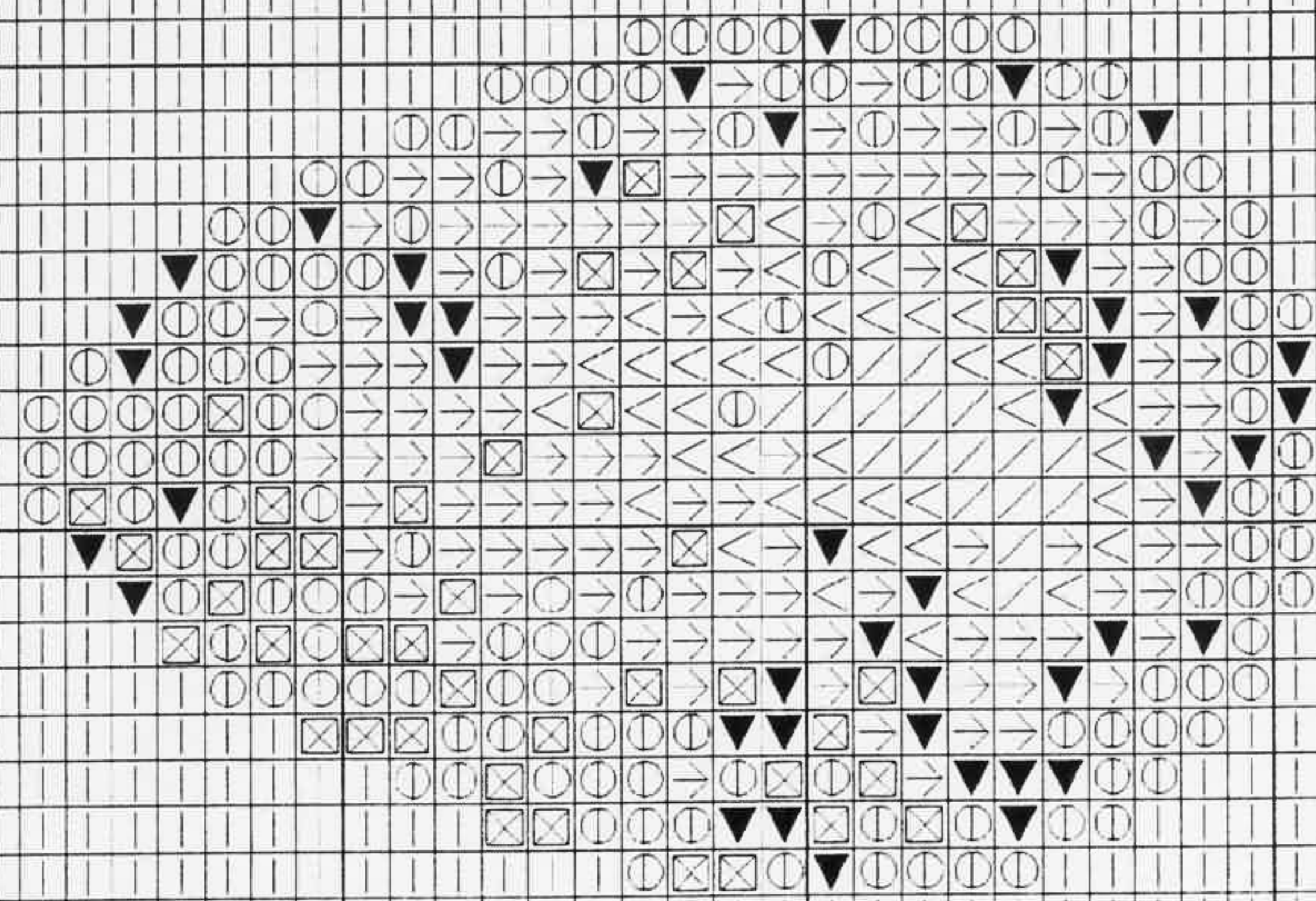
3799

GREAT SNIRE

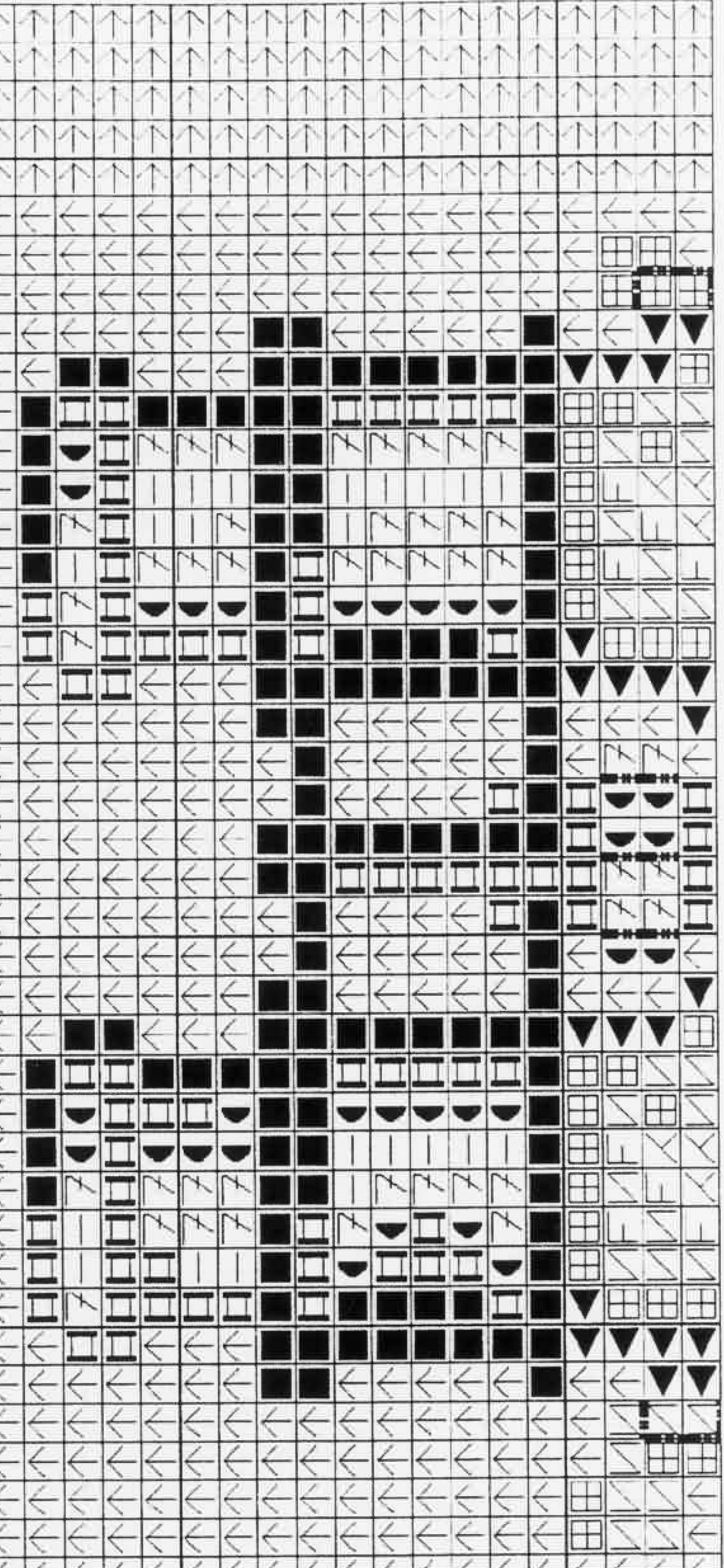
Grid-based collage artwork featuring various patterns and text elements. The central focus is the text 'SA STUDY' in a large, outlined font. To its right, the word 'MOUNTAIN' is written vertically in a similar style. Below these, there are several horizontal lines with arrows and numbers: '— 844', '— 844', and '3799'. The background consists of a grid with various patterns of 'N', 'V', 'X', and '6' characters. At the bottom, the text 'GREAT SNIRE' is partially visible. A small graphic of a bird's head is in the top right corner.

GREAT SNIPE

— 844 →



— 3799 →



1
3



©2007



A large grid-based pattern for a cross-stitch sampler. The grid is filled with various symbols including 'N', 'V', 'H', 'L', 'Z', 'O', 'K', 'F', 'M', 'X', and 'I'. The symbols are arranged to form a central illustration of a bird, likely a crow or raven, perched on a branch. The bird's body is formed by a dense pattern of 'H' and 'V' characters, while its wings and tail are formed by 'N' and 'Z' characters. The background of the grid is filled with a repeating pattern of 'V' characters.

Below the main grid, there is a section with a decorative border of 'V' characters. Inside this section, the text "July of Birds" is written in a stylized, cursive font. To the right of this text, the word "CROWN" is written in a simple, blocky font. Below "CROWN", there is a small grid of 'K' and 'I' characters forming a small square pattern.

At the bottom of the grid, there are several rows of 'V' characters. A horizontal line is drawn across the grid, with a bracket labeled "844" indicating a specific section or measurement.



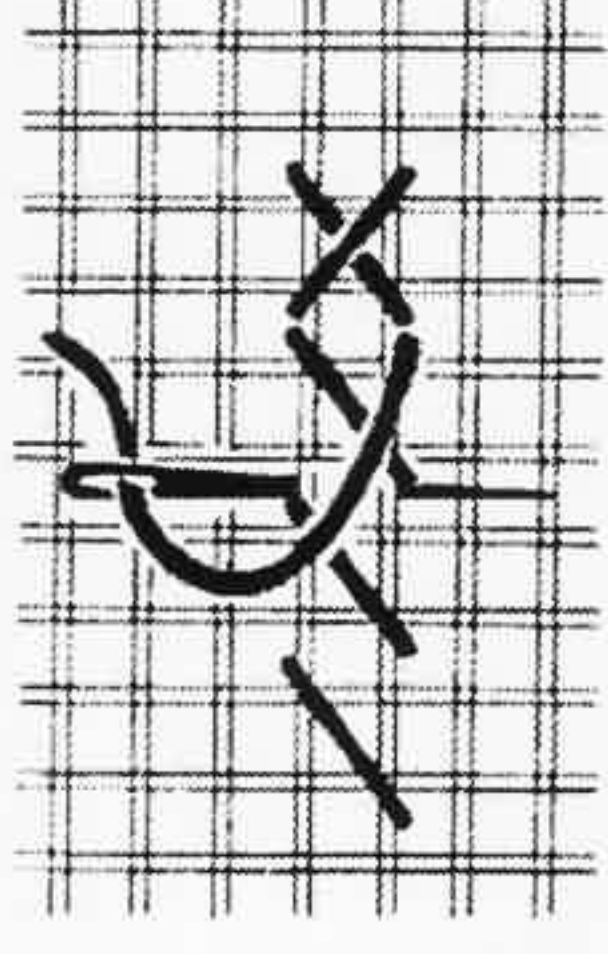
..... 3862

— 844 →

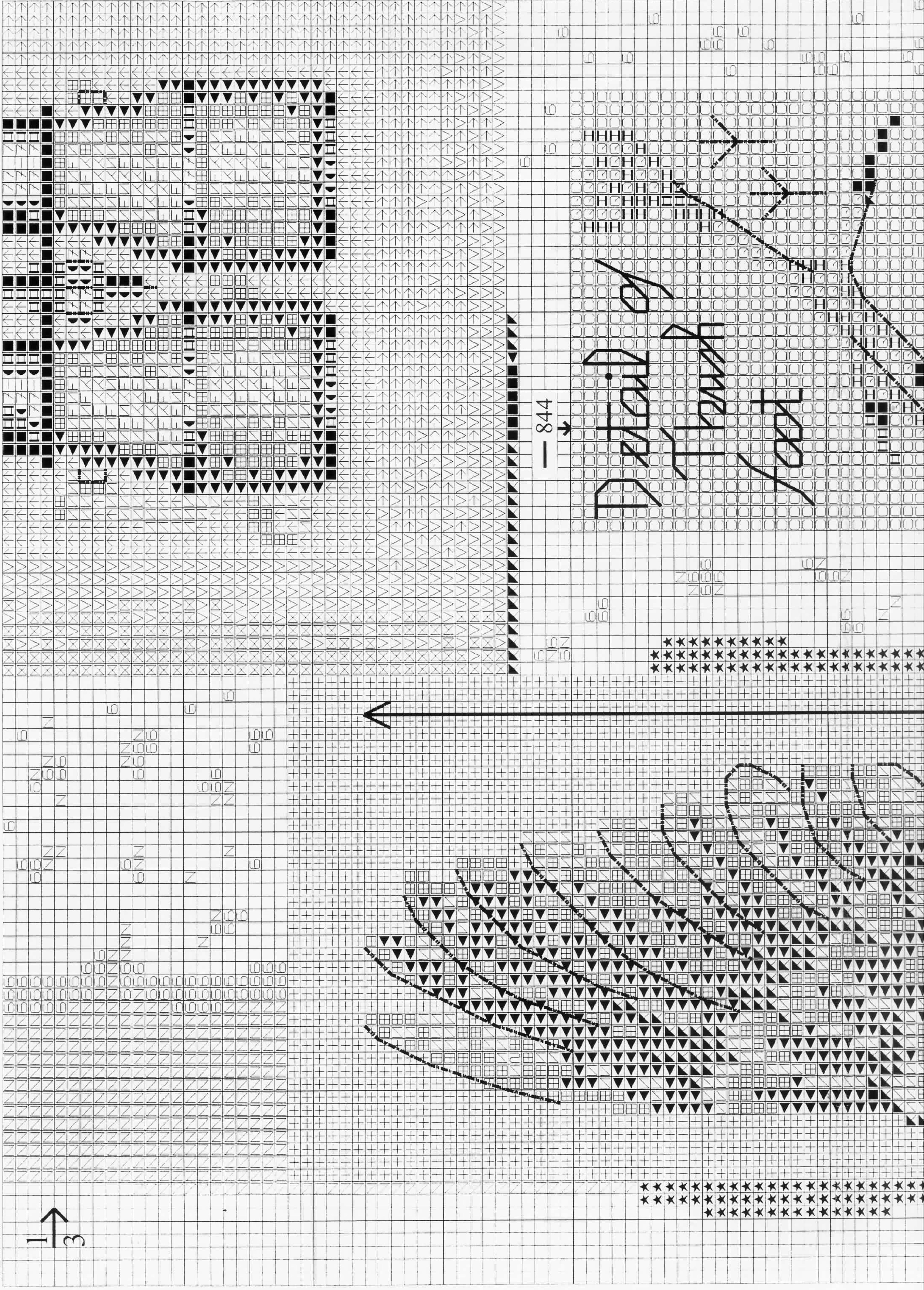
— 3051 →

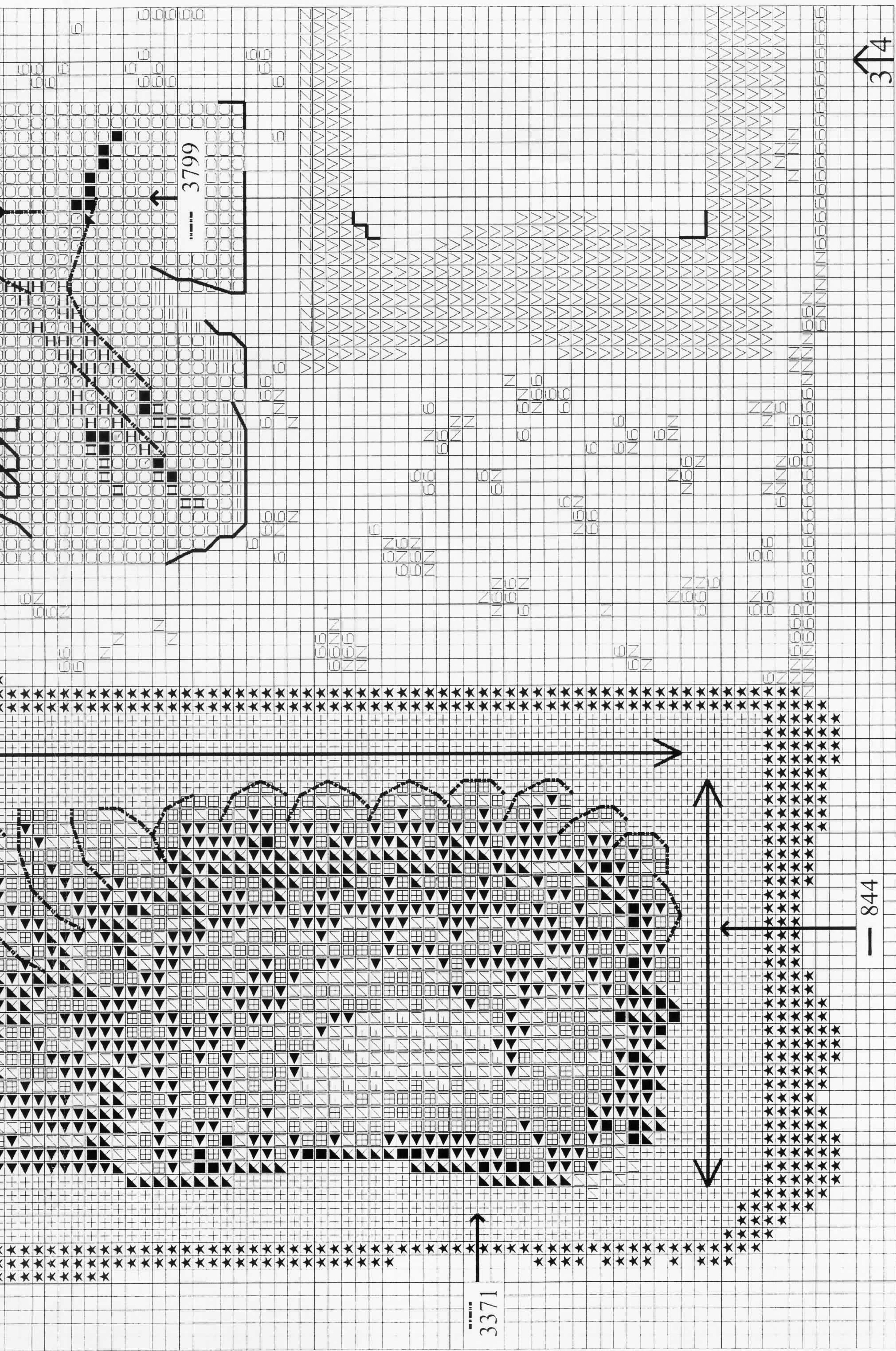
..... 3363

K
K
K
K



©2007





3371

3799



— 3051 →

..... 3363 →

Backbind road

← 844 →

May 25

C



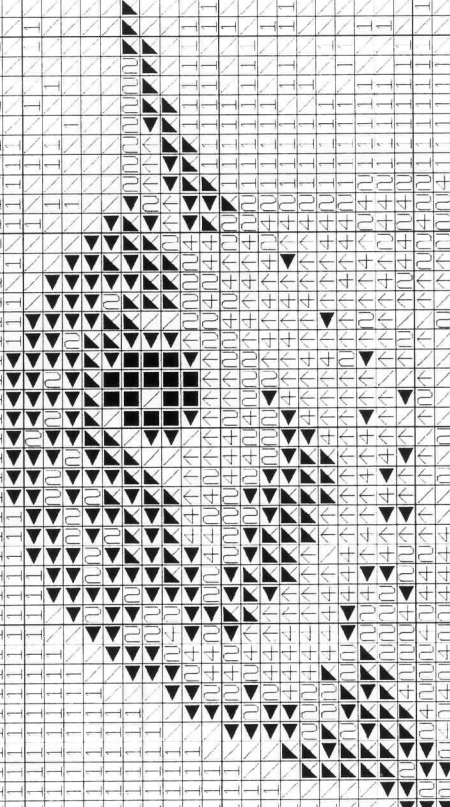
ART 117
DMC 6 Strand Embroidery Floss
Mouliné Spécial DMC

©2007

— 844
↓

A

No 78



Spotted
flycatcher

Cross Stitch - Point de Croix
Use 1 strand - Utiliser 1 brin



1	KK	3371	20	XX	3771
2	LL	801	21	YY	951
5	FF	437	22	ZZ	945
6	SS	738	23	EE	3064
7	==	3865	24	XX	3772
8	≡	Ecrú	25	II	3862
9	YY	677	26	GG	841
10	44	422	27	CC	3782
11	UU	167	28	11	3033
12	KK	610	36	RR	924
14	LL	646	37	ZZ	926
16	MM	3799	38	≡	927
17	TT	3857	39	11	928

B

— 844

14	☛☛	646	37	☞☞	926
16	■	3799	38	///	927
17	☛☛	3857	39	⊥⊥	928
18	☞☞	3830	42	↗↗	739
19	MM	3778			

Straight Stitch - Point Lancé
Use 1 strand - Utiliser 1 brin

15 — 844

French Knot - Point de Noeud
Use 1 strand - Utiliser 1 brin

15 • 844

B

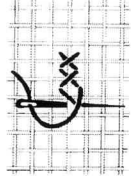
— 844
↓

Chaffinch No 888

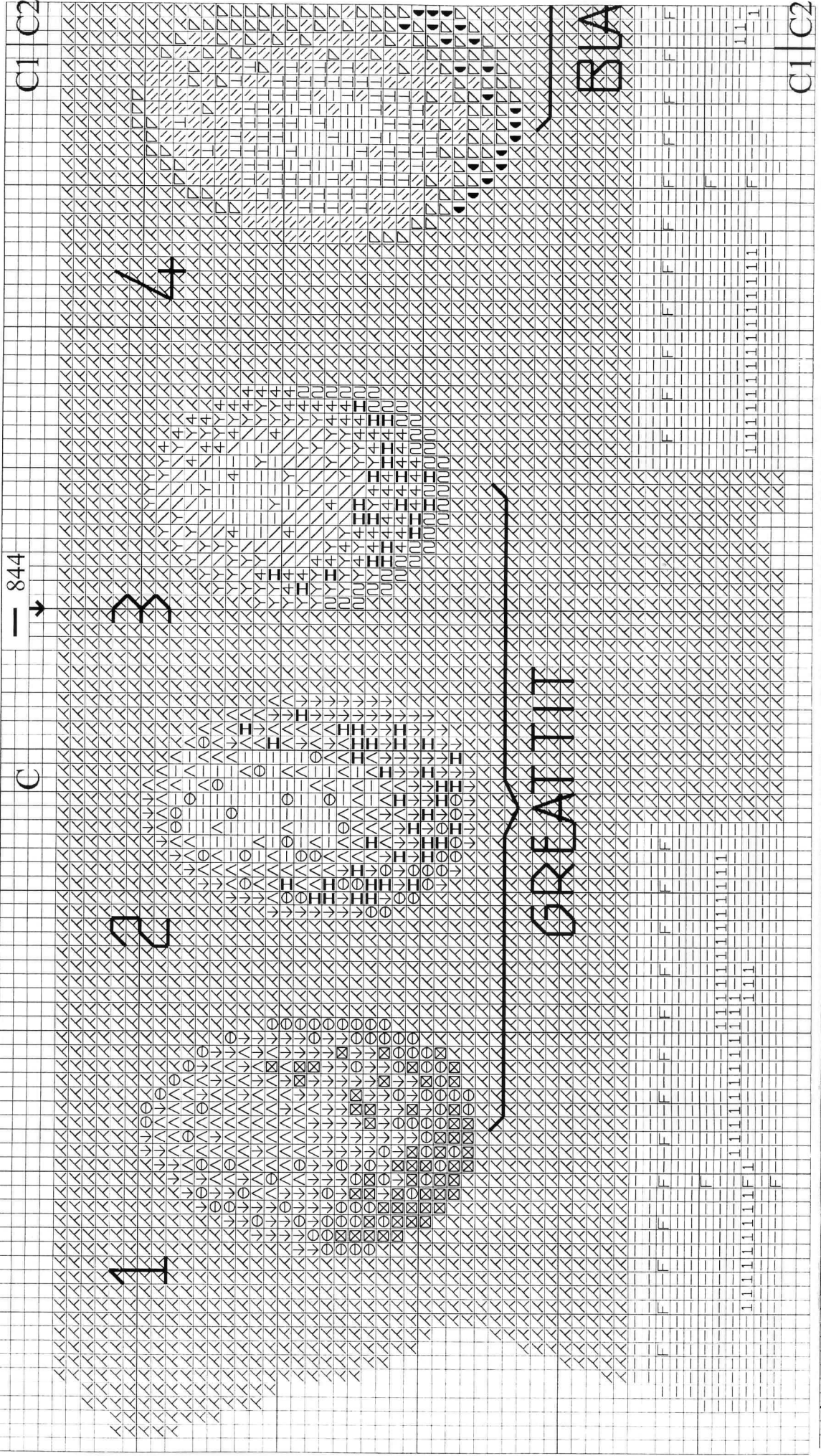
• — 844

Birds Sampler / Collage oiseaux

BK279



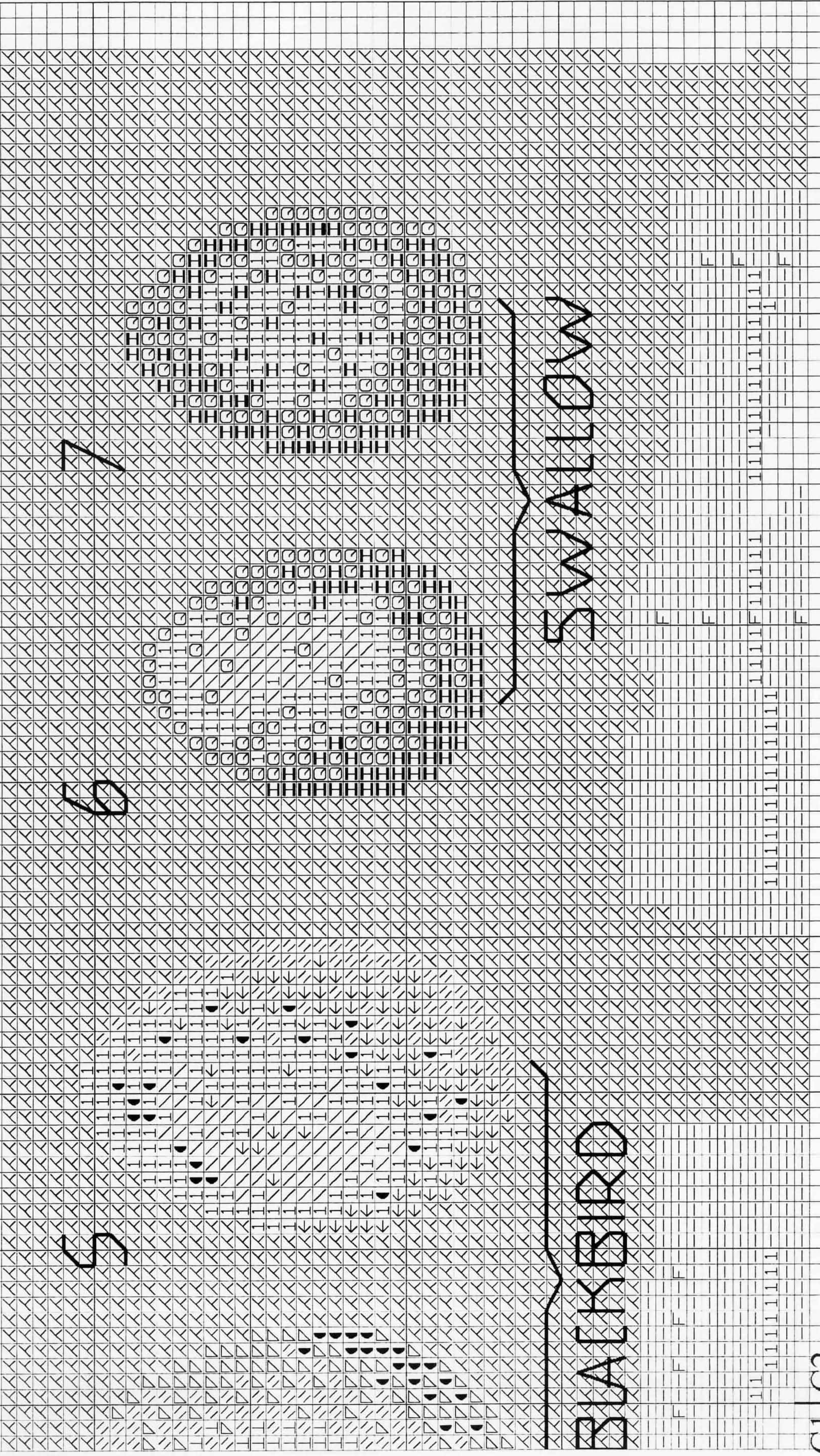
©2007



C1/C2

C1/C2

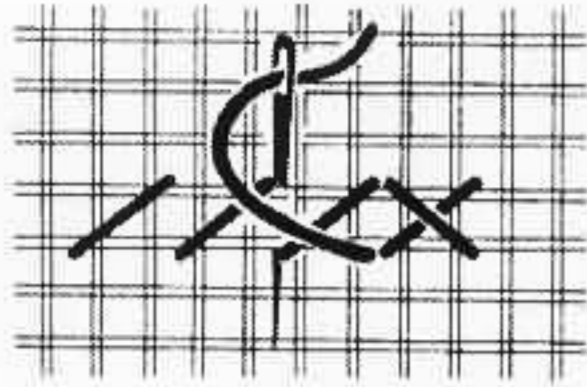
C1 | C2



BAKERSBIRD

BAKERSBIRD

C1 | C2



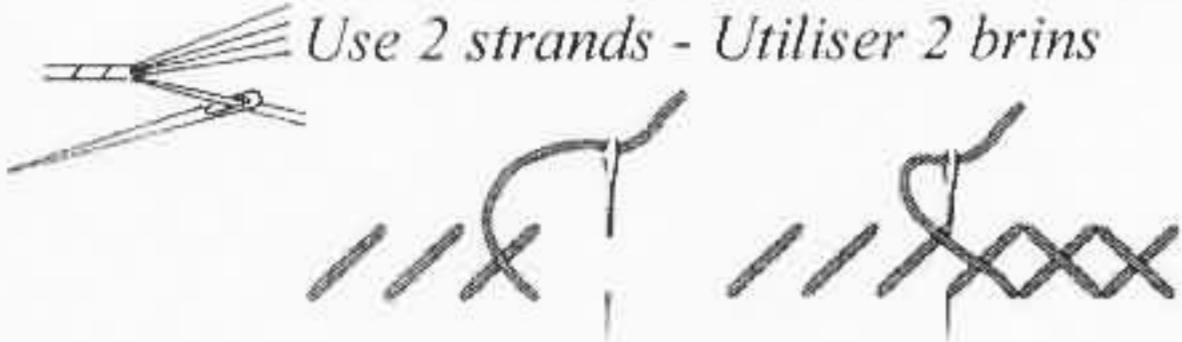
BK279

ART 117

DMC 6 Strand Embroidery Floss
Mouliné Spécial DMC

Cross Stitch - Point de Croix

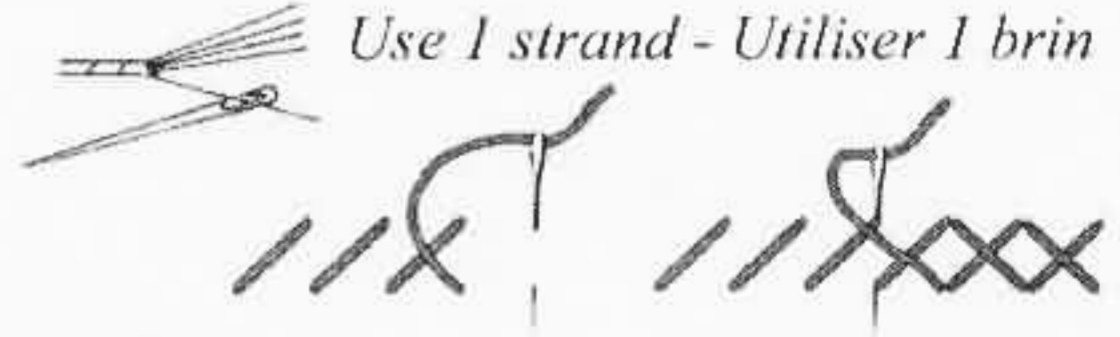
Use 2 strands - Utiliser 2 brins



- | | | | | | |
|----|--|------|----|--|------|
| 1 | | 3371 | 20 | | 3771 |
| 2 | | 801 | 21 | | 951 |
| 3 | | 434 | 22 | | 945 |
| 4 | | 436 | 23 | | 3064 |
| 5 | | 437 | 24 | | 3772 |
| 6 | | 738 | 25 | | 3862 |
| 7 | | 3865 | 26 | | 841 |
| 8 | | Ecru | 27 | | 3782 |
| 9 | | 677 | 28 | | 3033 |
| 10 | | 422 | 29 | | 3051 |
| 11 | | 167 | 30 | | 3011 |
| 12 | | 610 | 31 | | 3012 |
| 13 | | 648 | 32 | | 3047 |
| 14 | | 646 | 33 | | 3013 |
| 15 | | 844 | 34 | | 3364 |
| 16 | | 3799 | 35 | | 3363 |
| 17 | | 3857 | 36 | | 924 |
| 18 | | 3830 | 37 | | 926 |
| 19 | | 3778 | 38 | | 927 |
| | | | 39 | | 928 |

Cross Stitch - Point de Croix

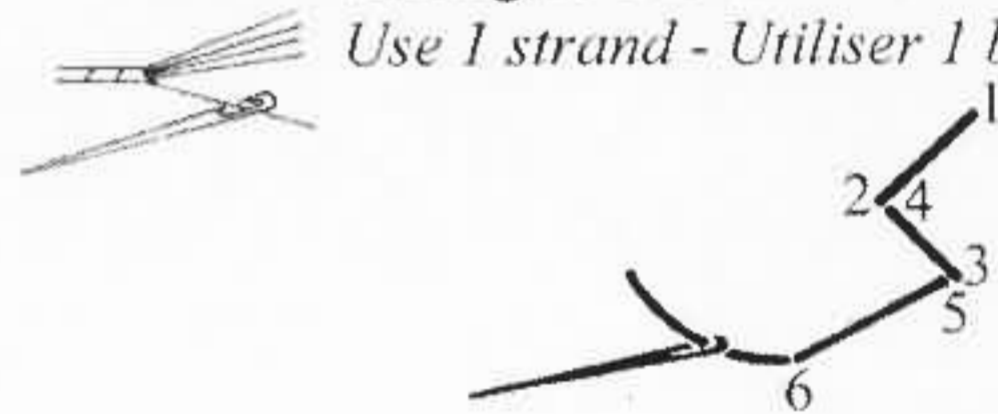
Use 1 strand - Utiliser 1 brin



- | | | | | | |
|----|--|------|----|--|-----|
| 5 | | 437 | 36 | | 924 |
| 6 | | 738 | 37 | | 926 |
| 7 | | 3865 | 38 | | 927 |
| 9 | | 677 | 40 | | 932 |
| 12 | | 610 | 41 | | 523 |
| 27 | | 3782 | 42 | | 739 |
| 28 | | 3033 | | | |

Straight Stitch - Point Lancé

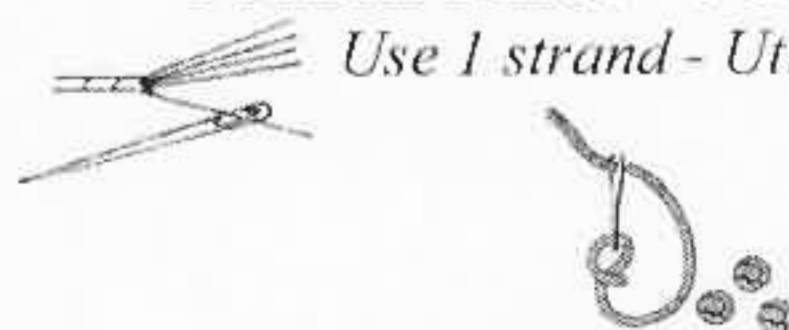
Use 1 strand - Utiliser 1 brin



- | | | |
|----|--|------|
| 1 | | 3371 |
| 15 | | 844 |
| 16 | | 3799 |
| 25 | | 3862 |
| 29 | | 3051 |
| 35 | | 3363 |

French Knot - Point de Noeud

Use 1 strand - Utiliser 1 brin



- | | | |
|----|---|-----|
| 15 | • | 844 |
|----|---|-----|