



Cross Stitch .
Use 2 strands



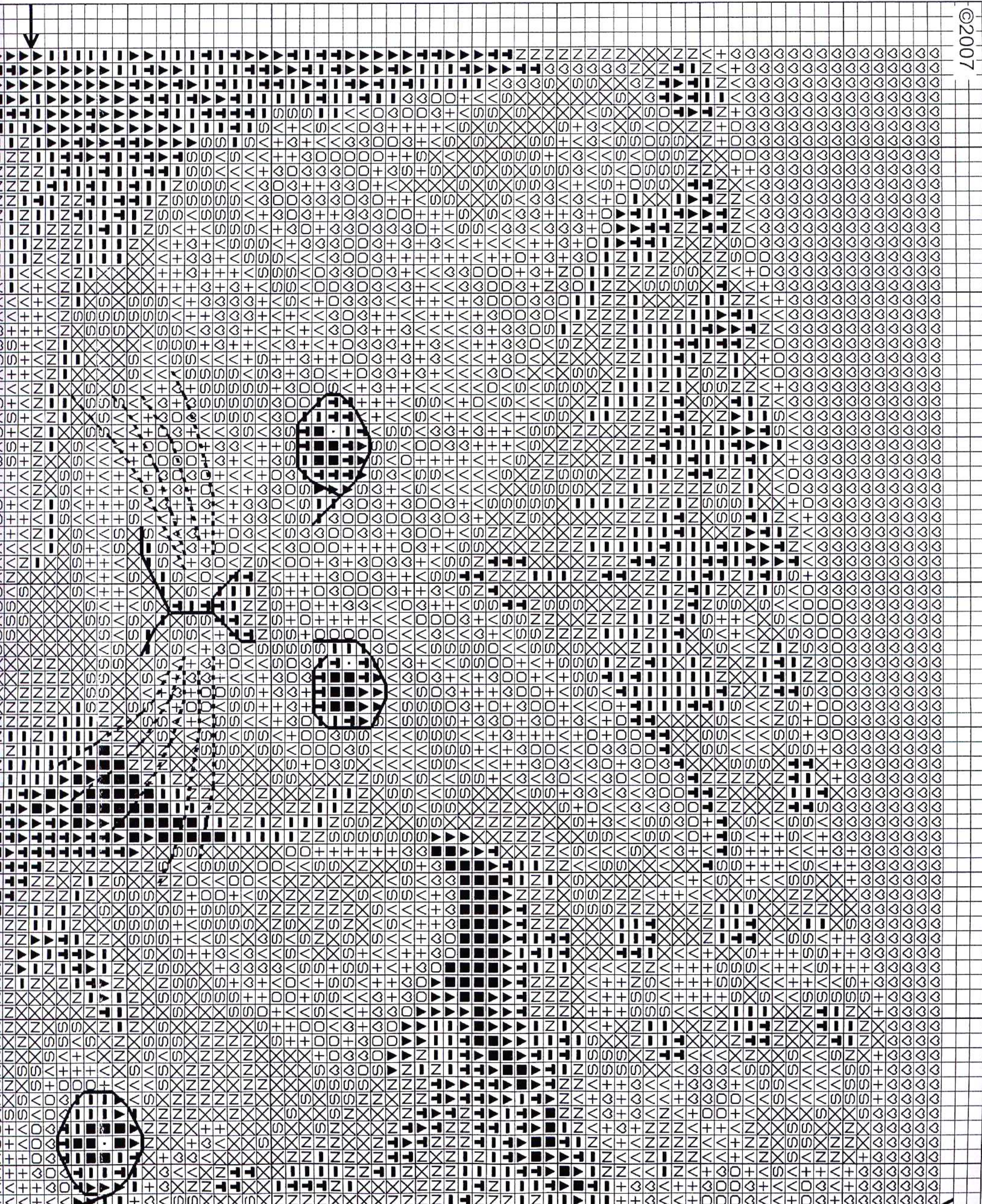
- DMC : 3371
- ▲ DMC : 938
- ⊕ DMC : 898
- DMC : 433
- N DMC : 434
- X DMC : 435
- S DMC : 436
- V DMC : 437
- + DMC : 738
- ⊖ DMC : 739
- DMC : 712
- DMC : Blanc

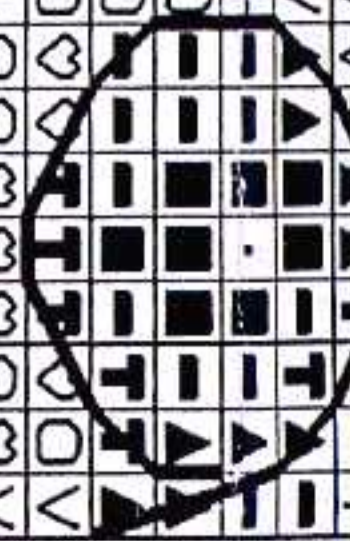
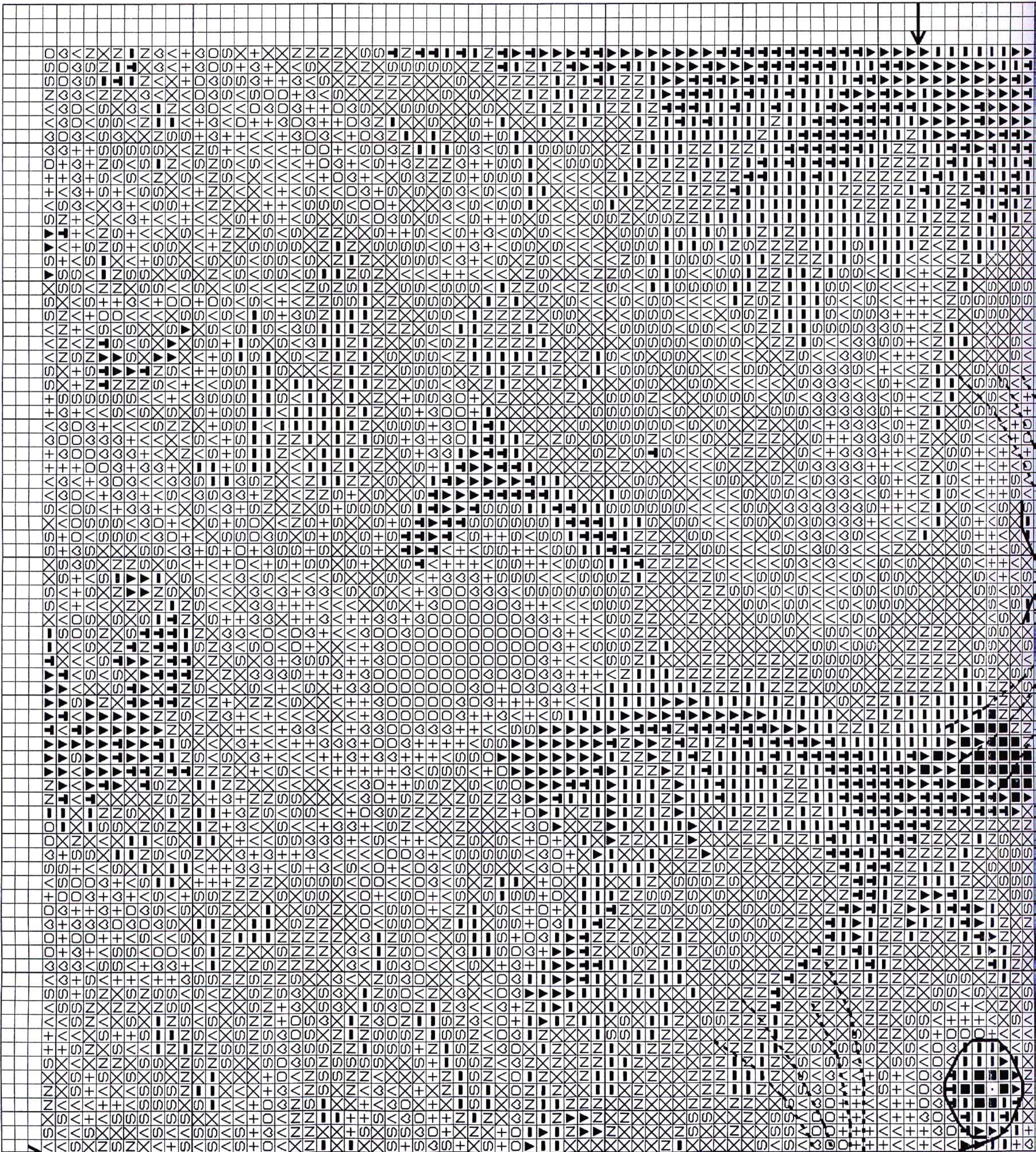


Back Stitch
Use 1 strand

- DMC : 310
- ⋯ DMC : BLANC

©2007





www.dmc.com
All rights reserved
worldwide



©2007

Stitch charm
where indicated

