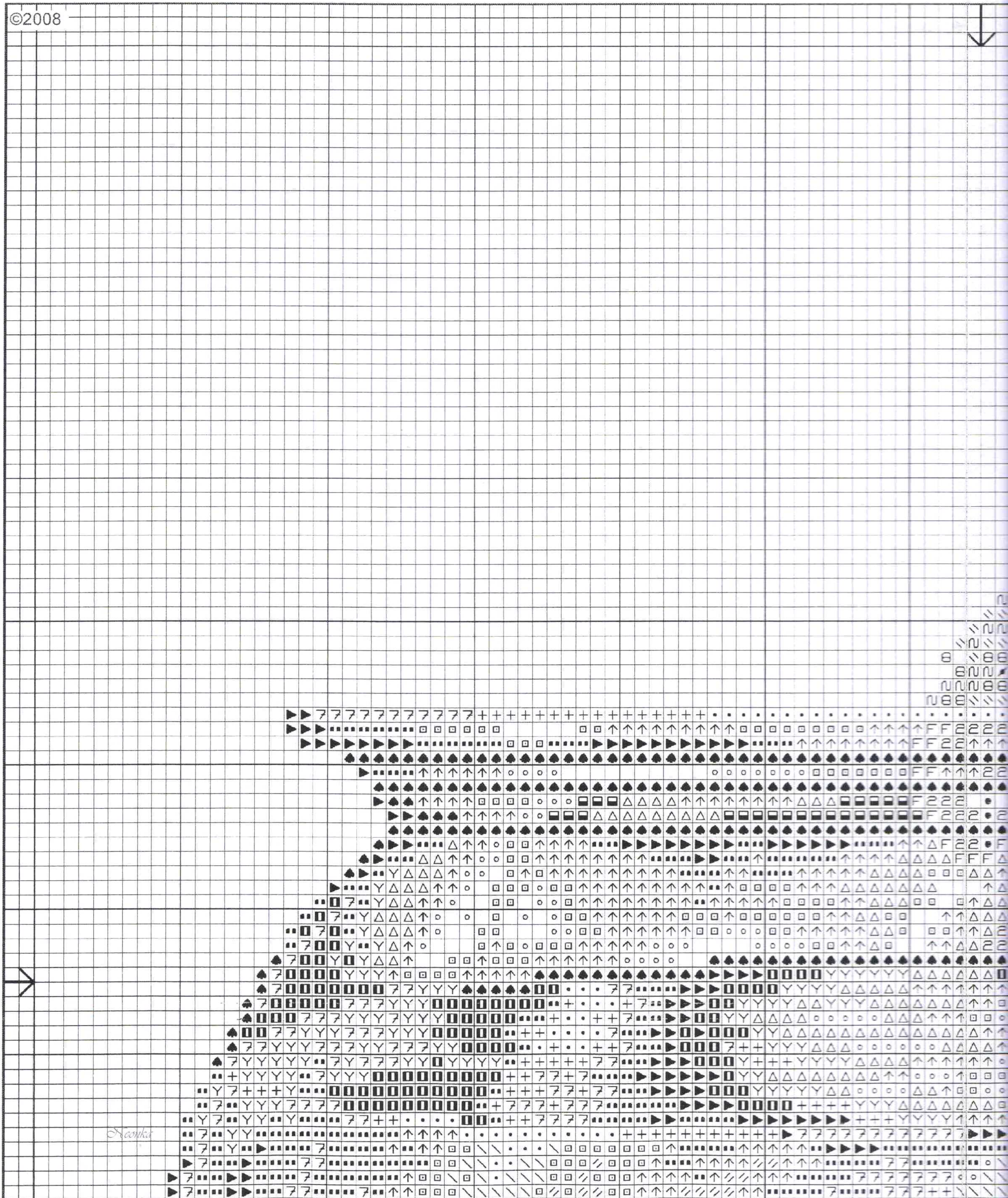


ART 117MC DMC 6 Strand embroidery floss.
Mouliné Spécial DMC

Cat and Goldfish / *Le chat et le poisson*

BK66

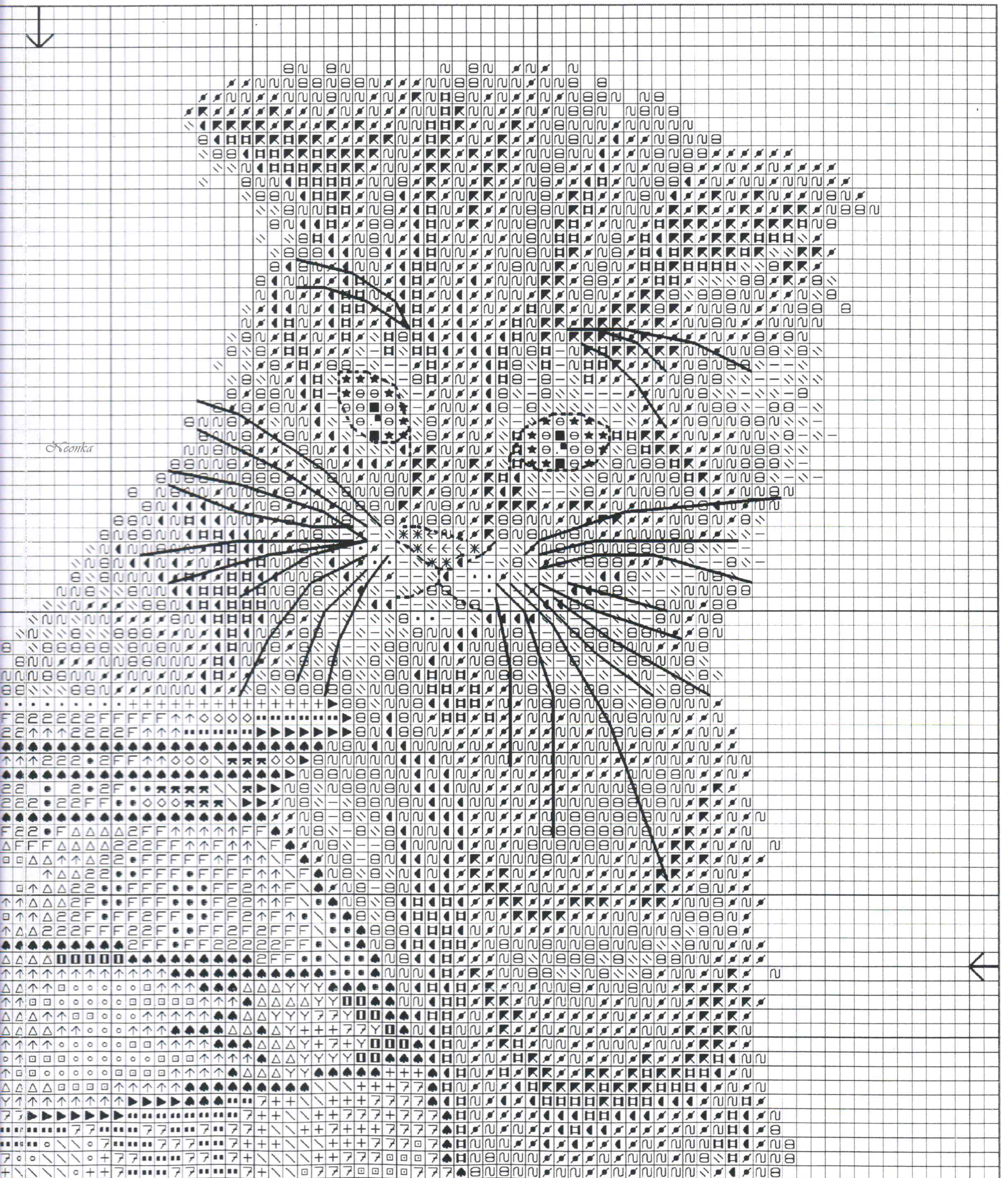
©2008

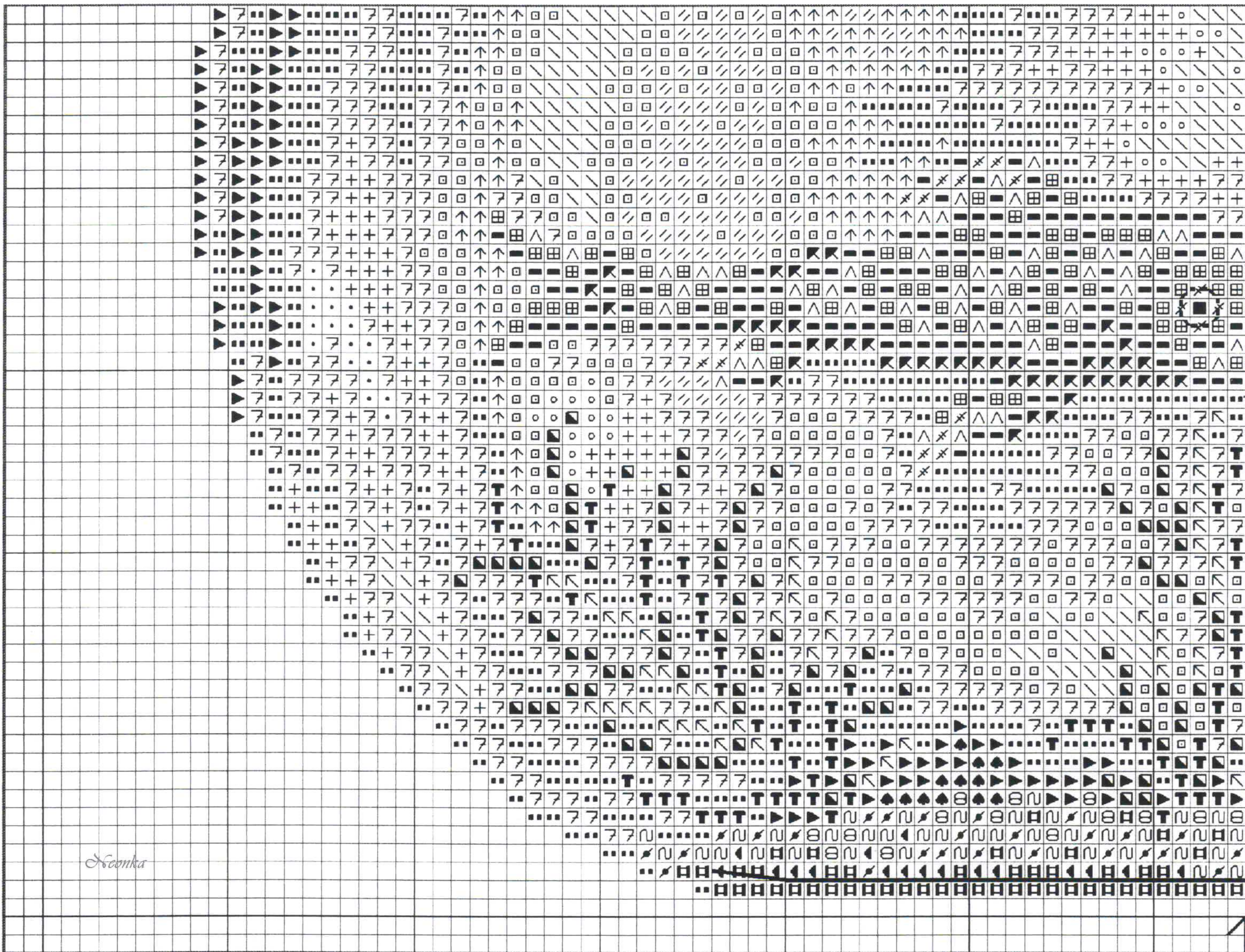


Stonka



All rights reserved worldwide
Modèles tous droits réservés

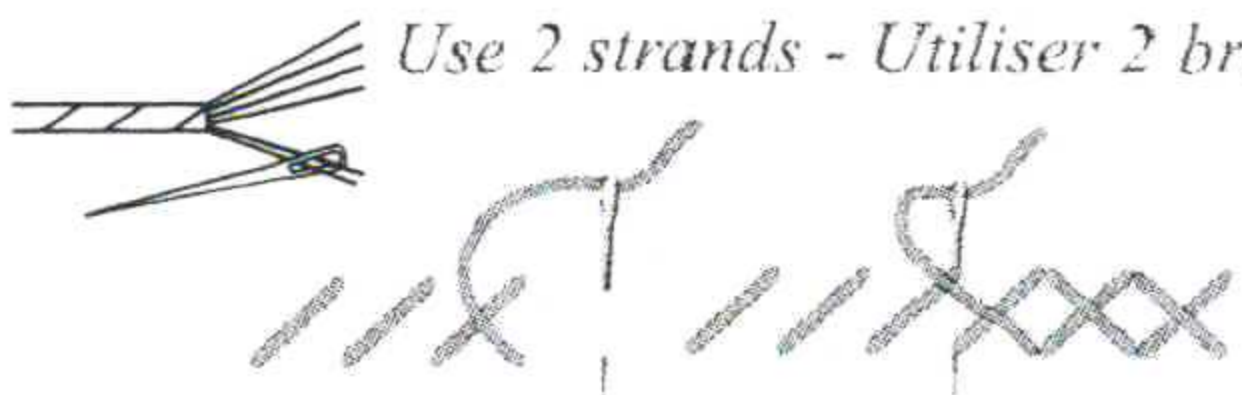


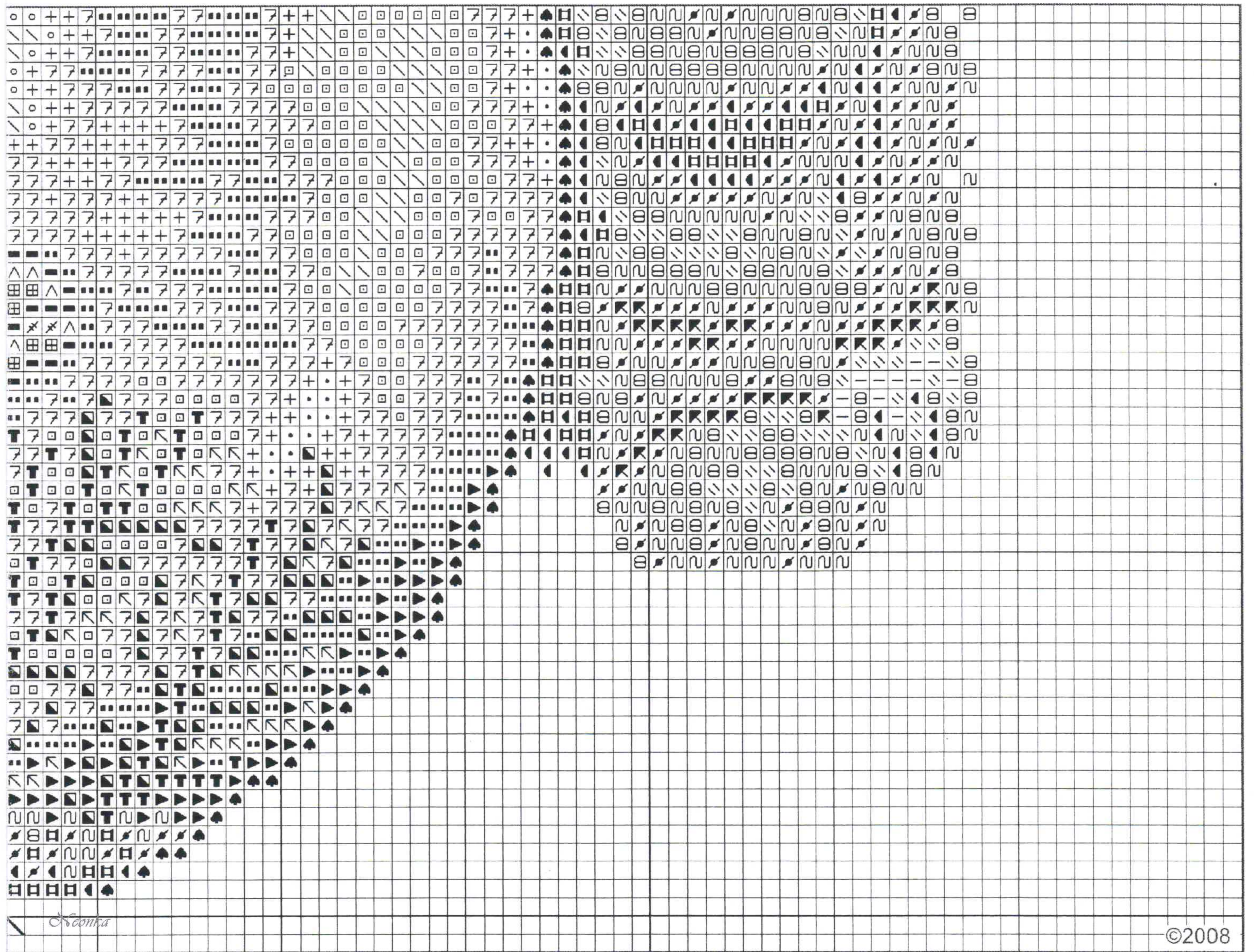


N. Komka

::	Blanc	^^	722	KK	470	77	1
==	712	田田	721	田田	937	...	1
≡≡	738	==	720	TT	3345	▶▶	3
⊘⊘	3827	←←	761	⊘⊘	502	◆◆	5
∞∞	976	**	760	**	924	■	3
↗↗	3826	◀◀	840	YY	3022		
KK	400	田田	839	田田	645		
**	3856	++	762	++	762		

Cross Stitch - Point de Croix.
Use 2 strands - Utiliser 2 brins





68
69
17
35
10

Half Cross Stitch - Demi Point
Use 2 strands - Utiliser 2 brins

	Blanc		645
	3827		762
	976		168
	3826		169
	840		3363
	839		
	3022		

Back Stitch - Point de Piqûre
Use 1 strand - Utiliser 1 brin

— Blanc

.... 310

