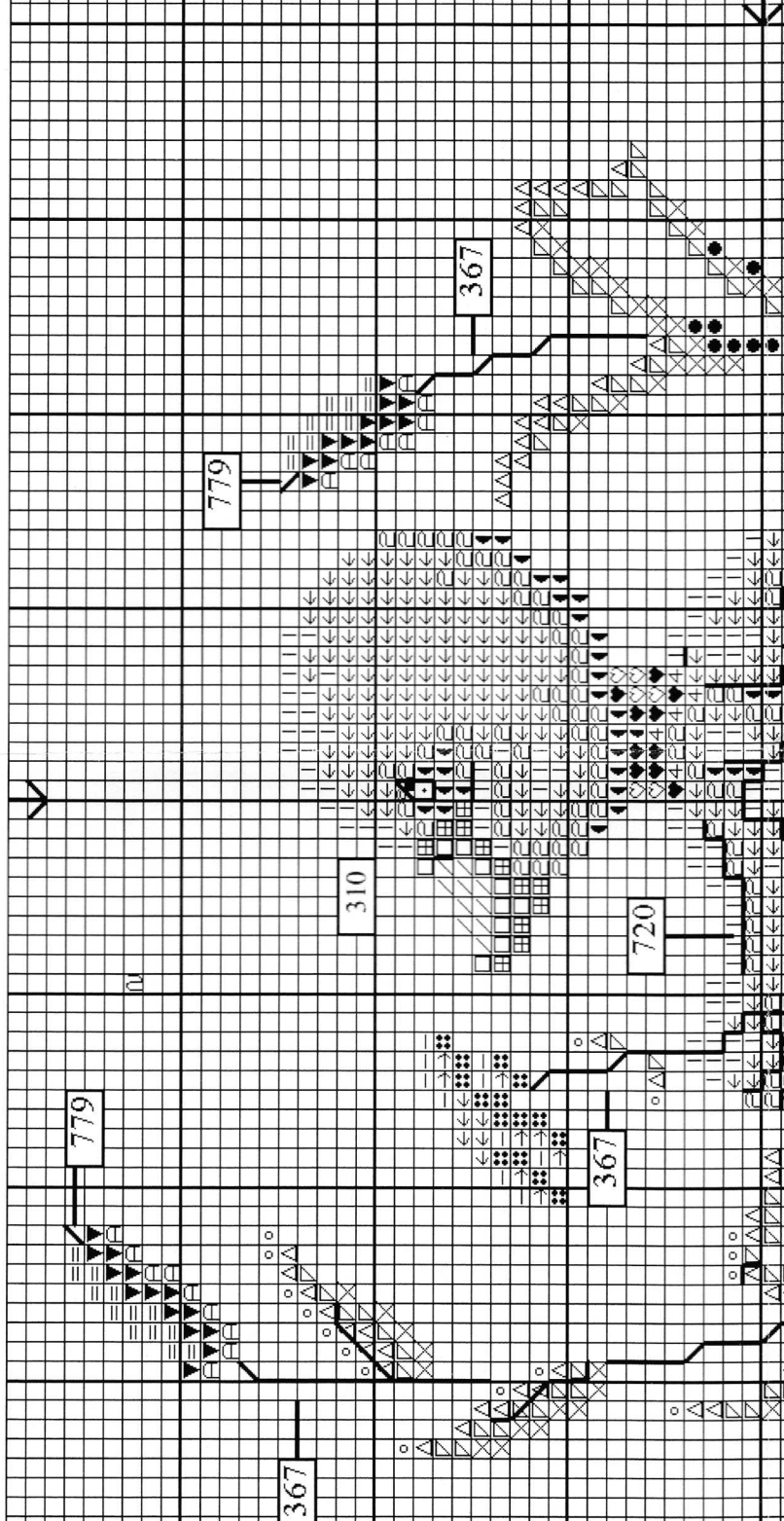


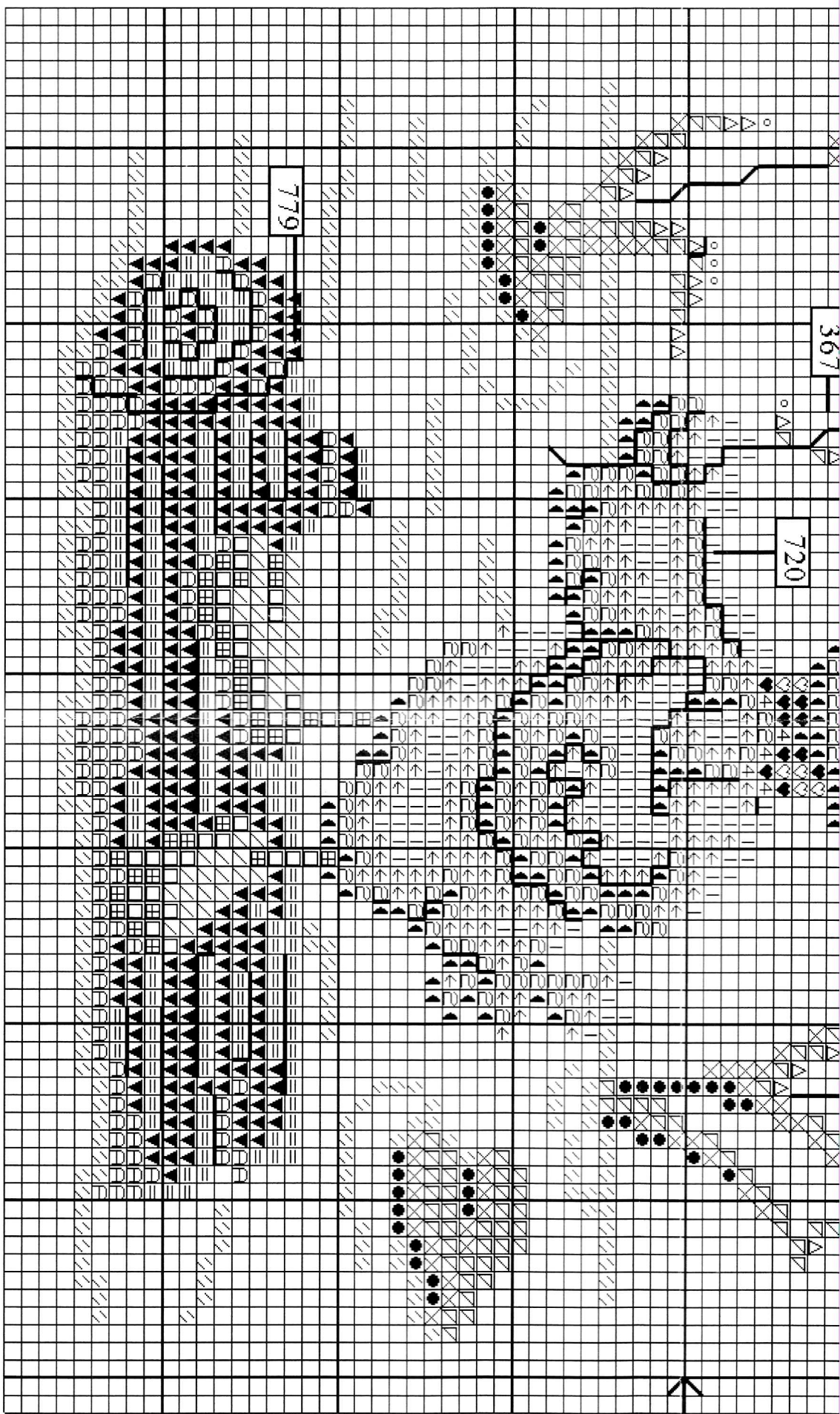
Duck on Log / La rivière

XC1058 A

1/2

©2003







ART 117
DMC 6 strand embroidery floss
Mouliné Spécial DMC

Cross Stitch - Point de Croix

Use 2 strands - Utiliser 2 brins



- | | | | | | |
|----|--|-----|----|--|-------|
| 1 | | 341 | 13 | | 310 |
| 2 | | 153 | 14 | | blanc |
| 3 | | 554 | 15 | | 150 |
| 4 | | 553 | 16 | | 3731 |
| 5 | | 369 | 17 | | 3733 |
| 6 | | 368 | 18 | | 727 |
| 7 | | 320 | 19 | | 726 |
| 8 | | 367 | 20 | | 725 |
| 9 | | 319 | 21 | | 972 |
| 10 | | 435 | 22 | | 3825 |
| 11 | | 436 | 23 | | 722 |
| 12 | | 437 | 24 | | 721 |

Back Stitch - Point de Piqûre

Use 1 strand - Utiliser 1 brin



- | | | |
|----|---|-----|
| 8 | — | 367 |
| 25 | — | 720 |
| 26 | — | 779 |

= Button / Bouton

©2003

