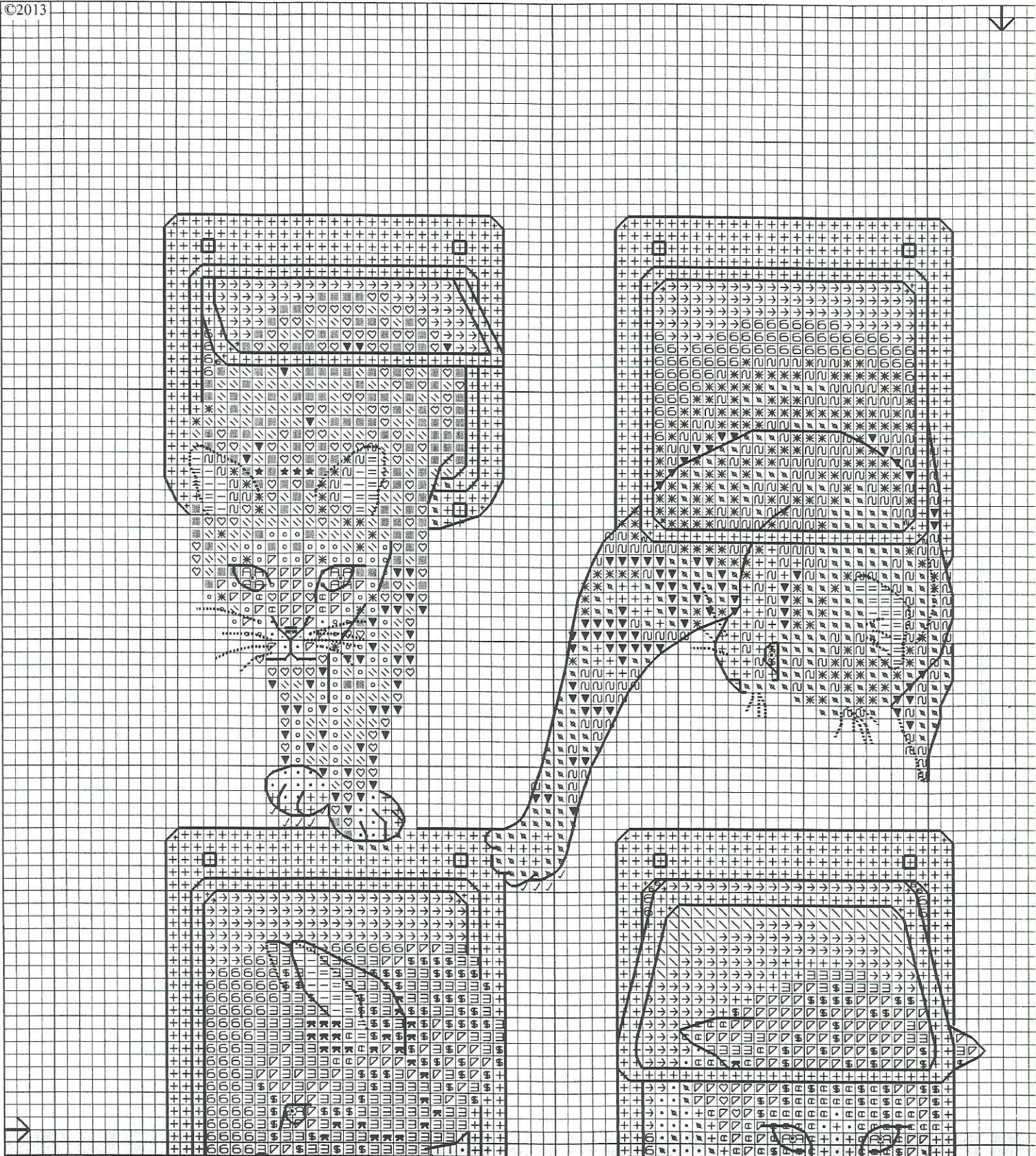


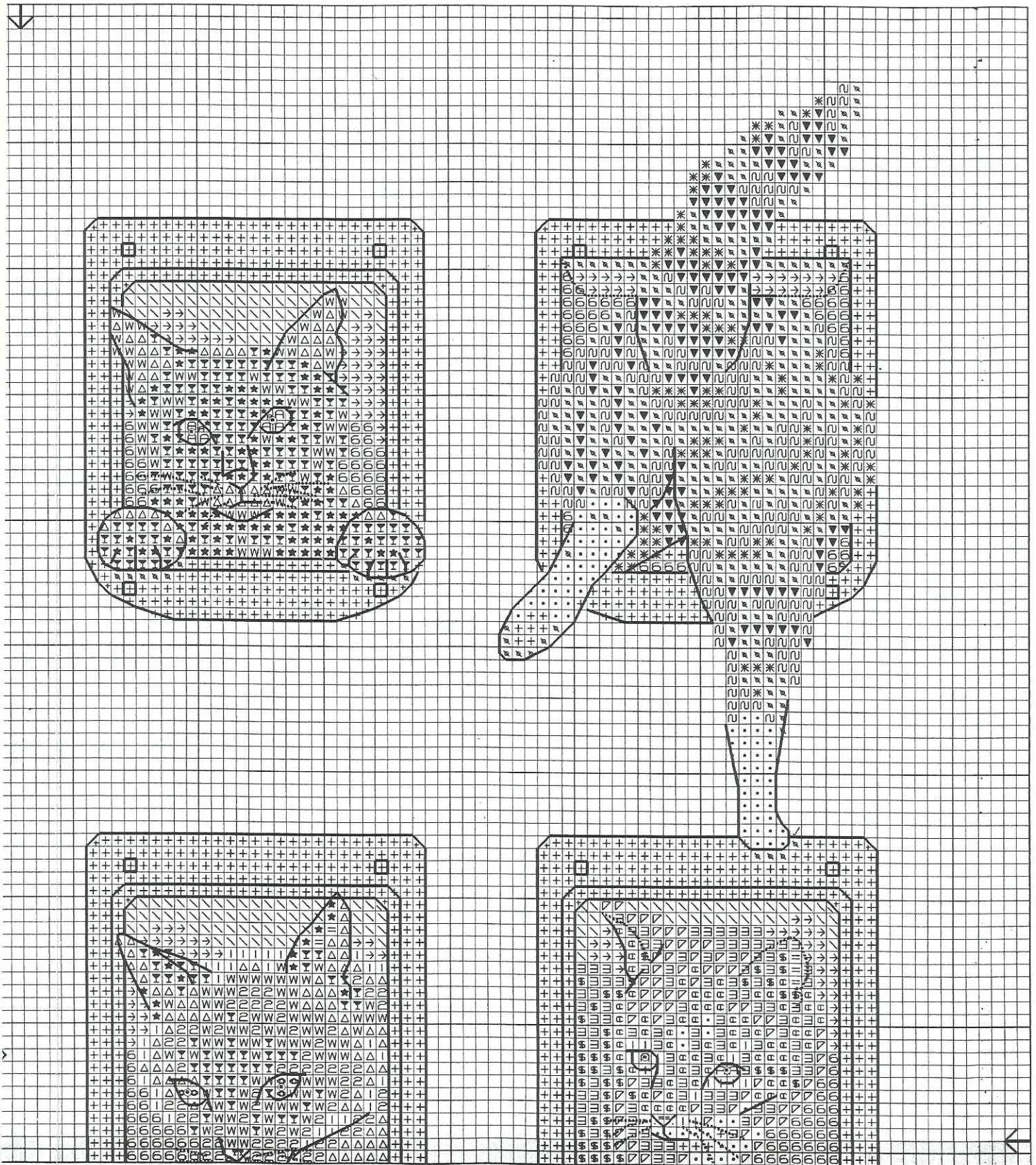
ART 117 MC
DMC 6 Strand embroidery floss.
Mouliné Spécial DMC

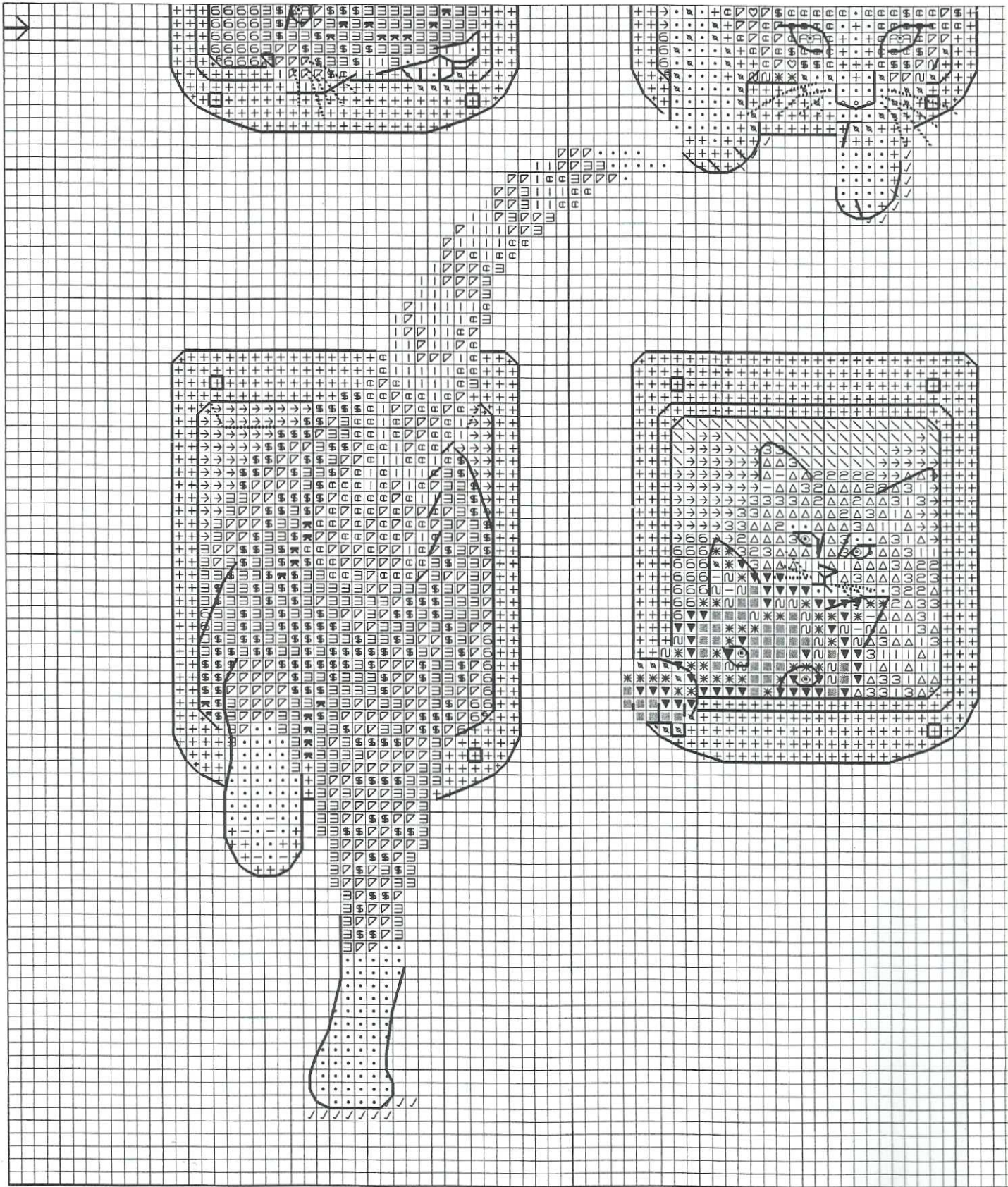
Heads or T

©2013

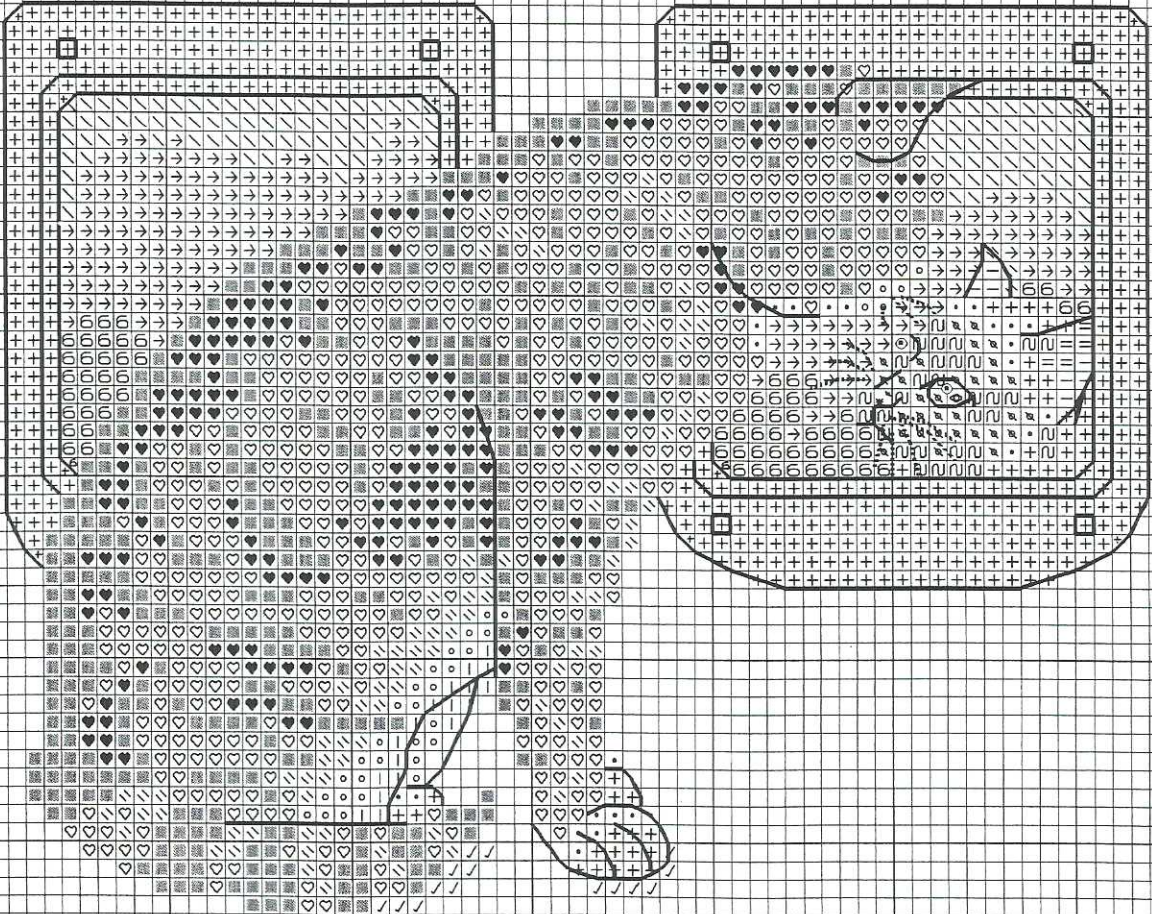
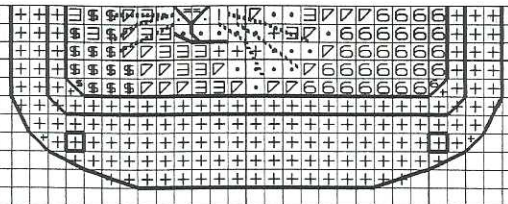


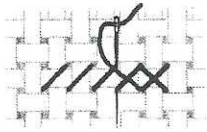
BK1360





BK1360





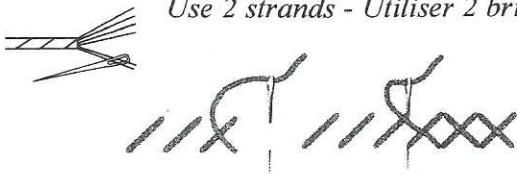
ART 117MC

DMC 6 Strand embroidery floss.

Mouliné Spécial DMC

Cross Stitch - Point de Croix.

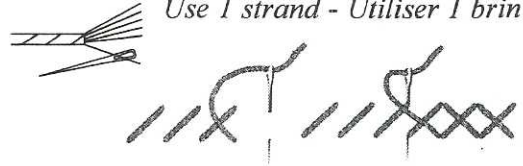
Use 2 strands - Utiliser 2 brins



- | | | | |
|----------|-------|----|------|
| AA
AA | 834 | | ECRU |
| oo | 827 | 33 | 822 |
| ♥♥ | 3787 | 22 | 841 |
| :: | Blanc | -- | 3771 |
| ++ | 762 | 66 | 738 |
| ▣▣ | 415 | ▽▽ | 437 |
| uu | 318 | ≡≡ | 436 |
| ** | 317 | 55 | 434 |
| ▼▼ | 3799 | ✕✕ | 433 |
| ▣▣ | 310 | oo | 644 |
| ♡♡ | 640 | == | 3778 |
| ∩∩ | 642 | | |
| ★★ | 3371 | | |
| Y Y | 838 | | |
| ww | 840 | | |
| △△ | 842 | | |

Cross Stitch - Point de Croix.

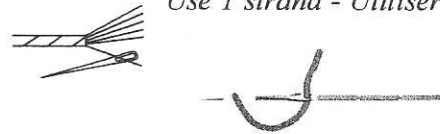
Use 1 strand - Utiliser 1 brin



- | | | | |
|----|-----|----|-----|
| ∩∩ | 162 | 66 | 813 |
| →→ | 827 | ∩∩ | 415 |

Back Stitch - Point de Piqûre

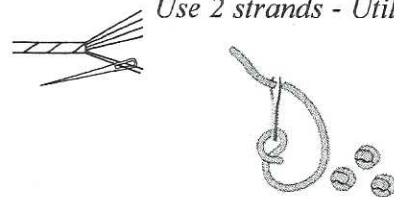
Use 1 strand - Utiliser 1 brin



- | | |
|-------|-----|
| | 415 |
| == | 310 |

French Knot - Point de Noeud

Use 2 strands - Utiliser 2 brins



- | | |
|----|-----|
| oo | 310 |
|----|-----|

