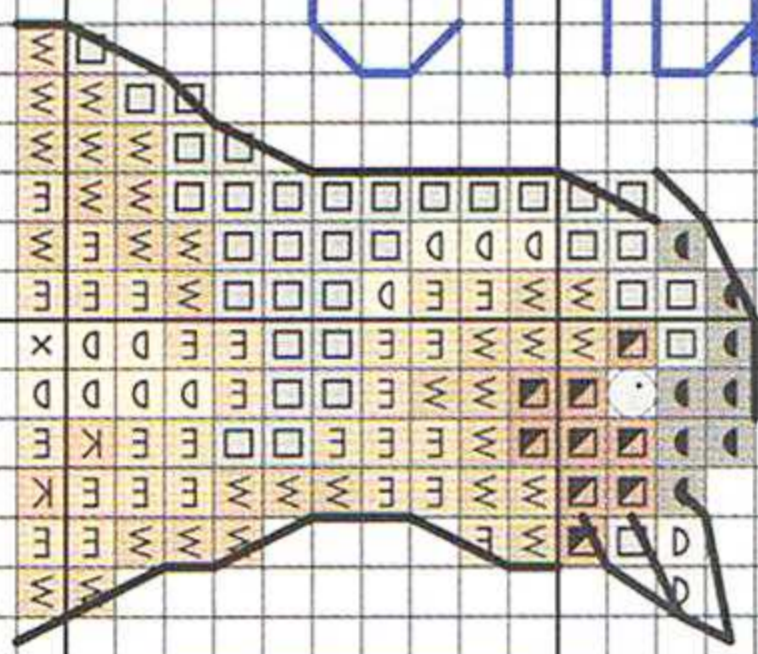
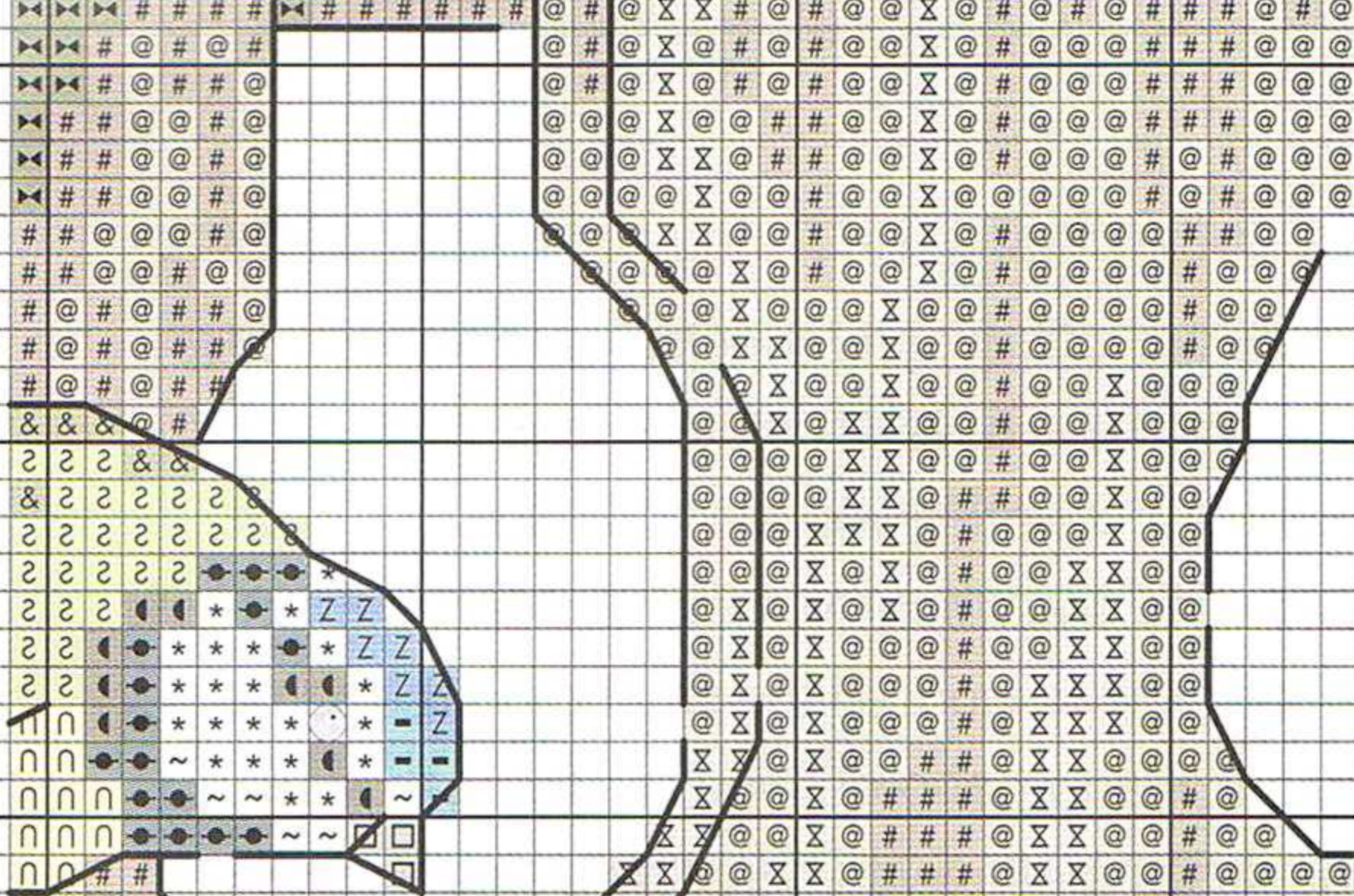
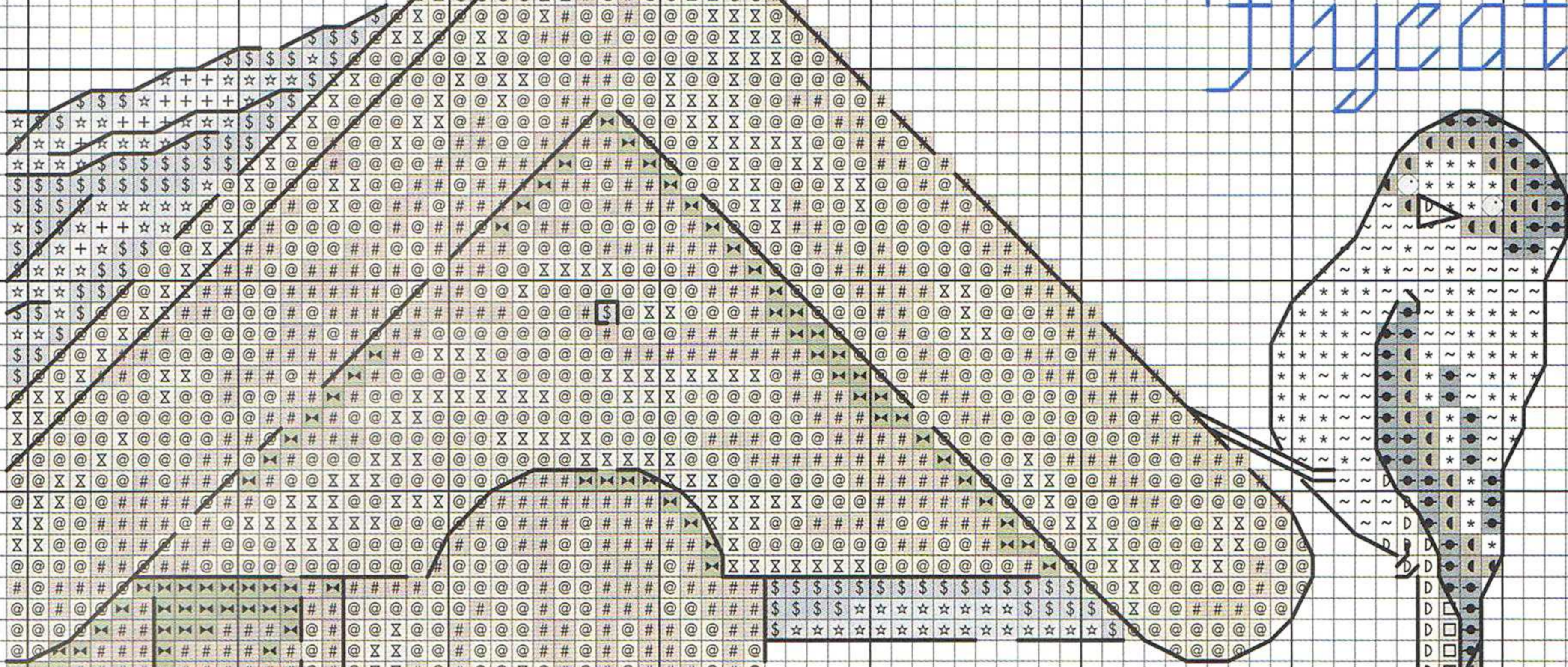


50 60 70 80 90 100 110 120 130

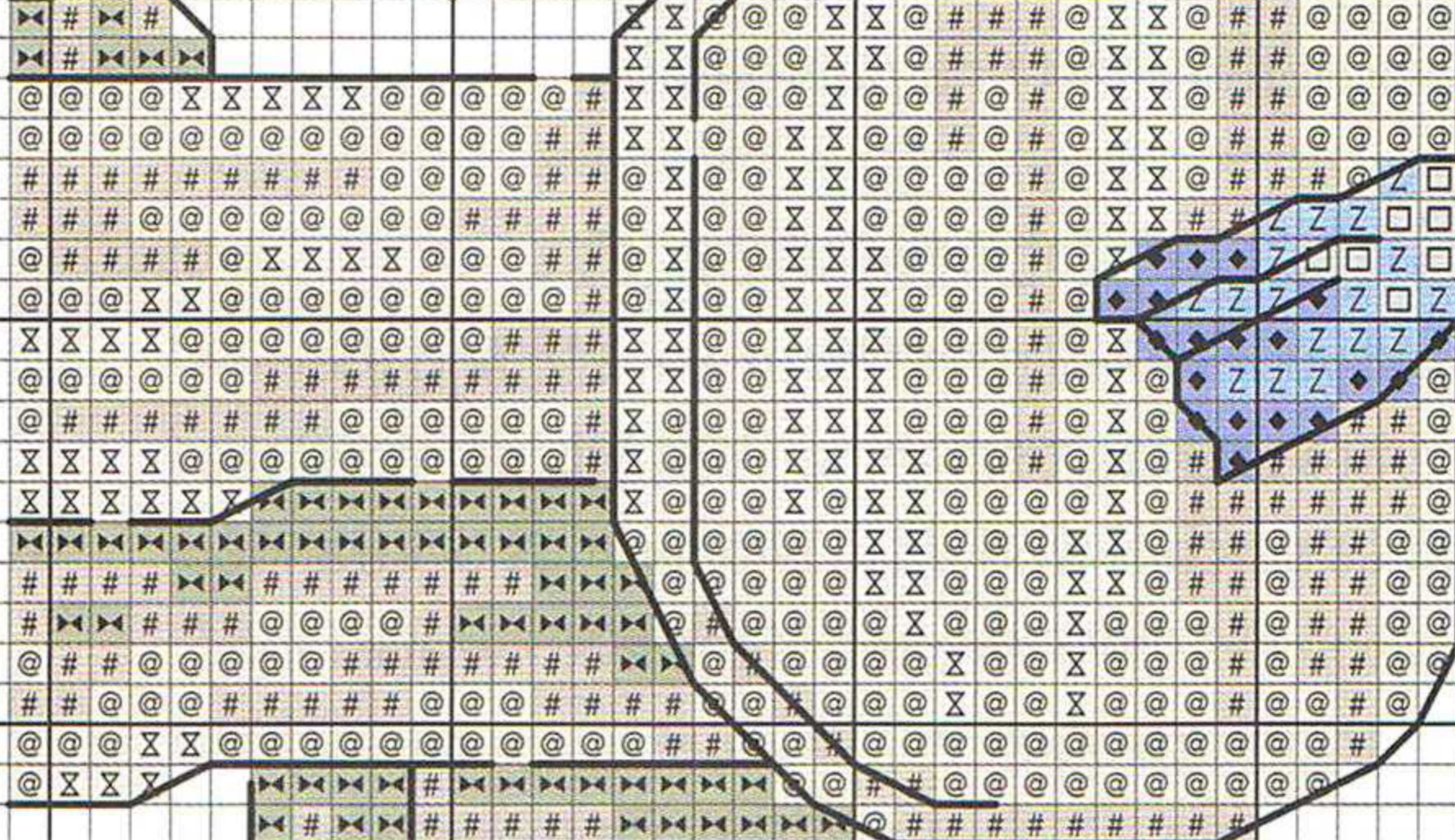
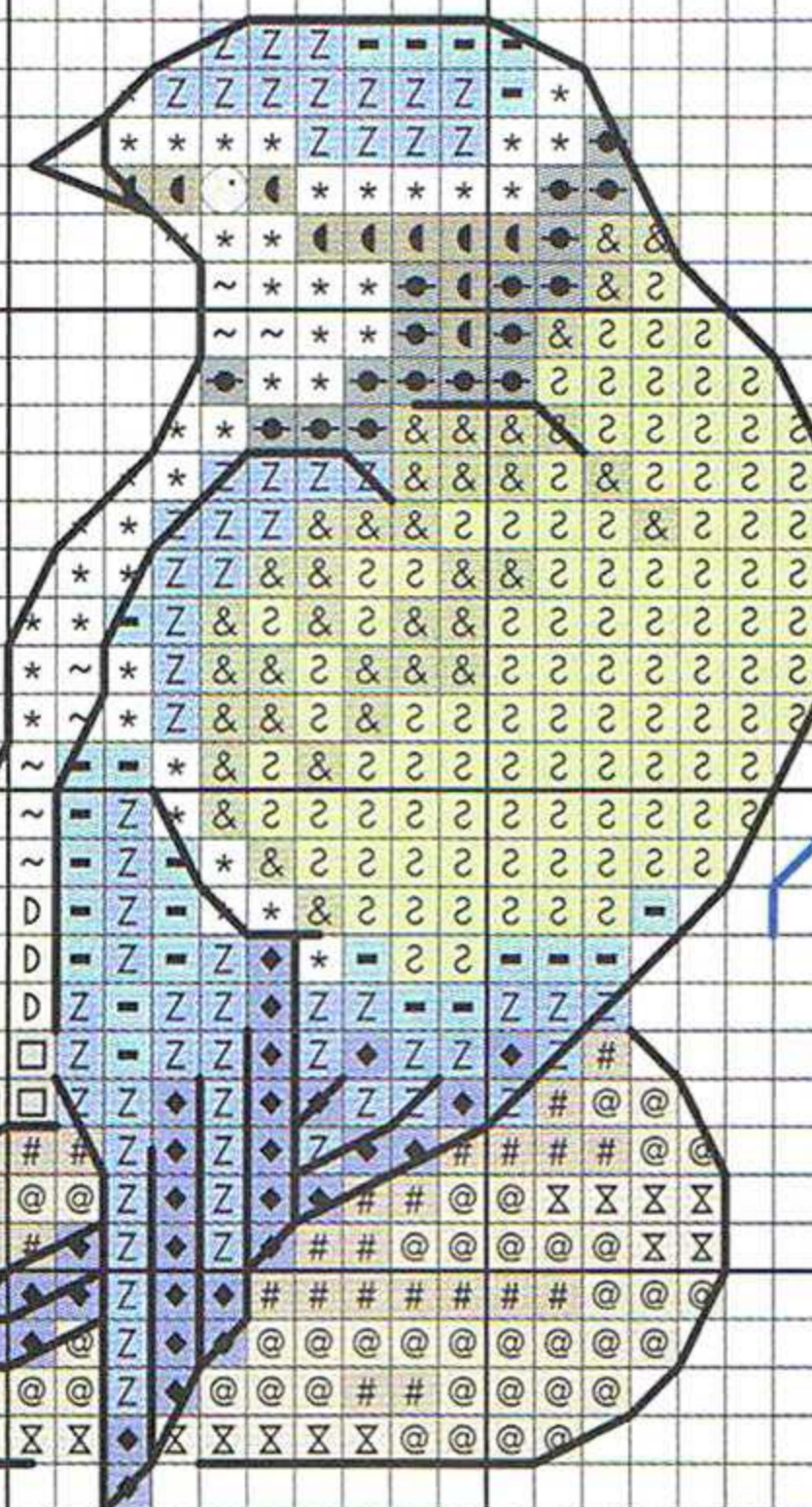
Chaffinch



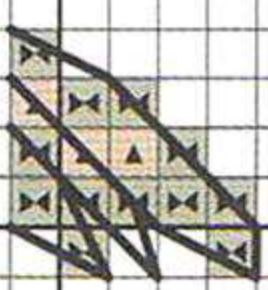
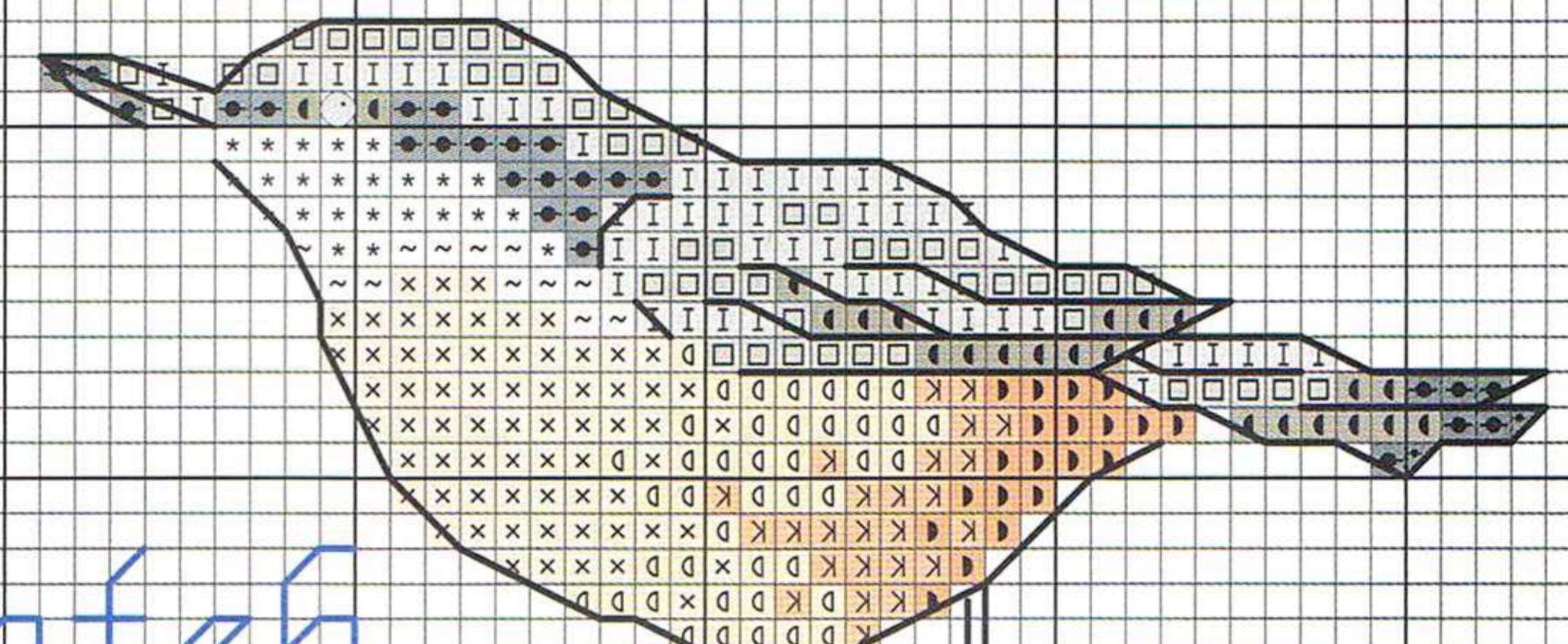
Flycatcher



Blue Tit



Nuthatch





# Summer songbirds

DMC Anchor Madeira Colour  
Cross stitch in two strands

|        |       |      |      |                  |
|--------|-------|------|------|------------------|
| ✳✳     | B5200 | 001  | 2401 | Bright white     |
| ◆◆     | 312   | 143  | 1005 | Dark blue        |
| ✳✳     | 318   | 235  | 1801 | Light grey       |
| ZZ     | 322   | 146  | 1004 | Light blue       |
| \$\$\$ | 414   | 400  | 1714 | Medium grey      |
| ++++   | 415   | 398  | 1802 | Very light grey  |
| ■      | 434   | 310  | 2009 | Dark brown       |
| ≡      | 435   | 365  | 2010 | Medium brown     |
| E      | 436   | 363  | 2011 | Light brown      |
| D      | 437   | 362  | 2012 | Dark tan         |
| 2      | 471   | 265  | 1501 | Dark leaf green  |
| -      | 597   | 1064 | 1110 | Teal             |
| ▲      | 611   | 898  | 2107 | Olive brown      |
| #      | 640   | 393  | 1905 | Dark green grey  |
| @      | 642   | 392  | 1903 | Med green grey   |
| D      | 644   | 391  | 1814 | Stone            |
| ◐      | 646   | 8581 | 1812 | Medium graphite  |
| ◑      | 647   | 1040 | 1813 | Light graphite   |
| I      | 648   | 231  | 1803 | Lead             |
| ~      | 712   | 926  | 2101 | Off white        |
| n      | 726   | 295  | 0109 | Dark yellow      |
| ◇      | 734   | 280  | 1610 | Olive green      |
| x      | 738   | 361  | 2013 | Light tan        |
| ●      | 844   | 1041 | 1713 | Dark grey        |
| X      | 922   | 1003 | 0310 | Dull orange      |
| D      | 946   | 332  | 0207 | Orange           |
| ♥      | 961   | 076  | 0610 | Dark pink        |
| △      | 962   | 075  | 0609 | Medium pink      |
| ★      | 987   | 244  | 1403 | Dark green       |
| %      | 989   | 242  | 1401 | Light green      |
| X      | 3023  | 899  | 1902 | Light green grey |
| &      | 3052  | 844  | 1509 | Sage green       |
| ∕      | 3078  | 292  | 0102 | Light yellow     |
| ♡      | 3348  | 264  | 1409 | Light leaf green |
| ○      | 3716  | 025  | 0606 | Light pink       |
| ◀▶     | 3787  | 273  | 1811 | Dark graphite    |

## Backstitch in one strand

|                                |      |     |      |             |
|--------------------------------|------|-----|------|-------------|
| —                              | 798  | 142 | 0911 | Medium blue |
| lettering                      |      |     |      |             |
| —                              | 3790 | 903 | 2002 | Chocolate   |
| all other outlines and details |      |     |      |             |

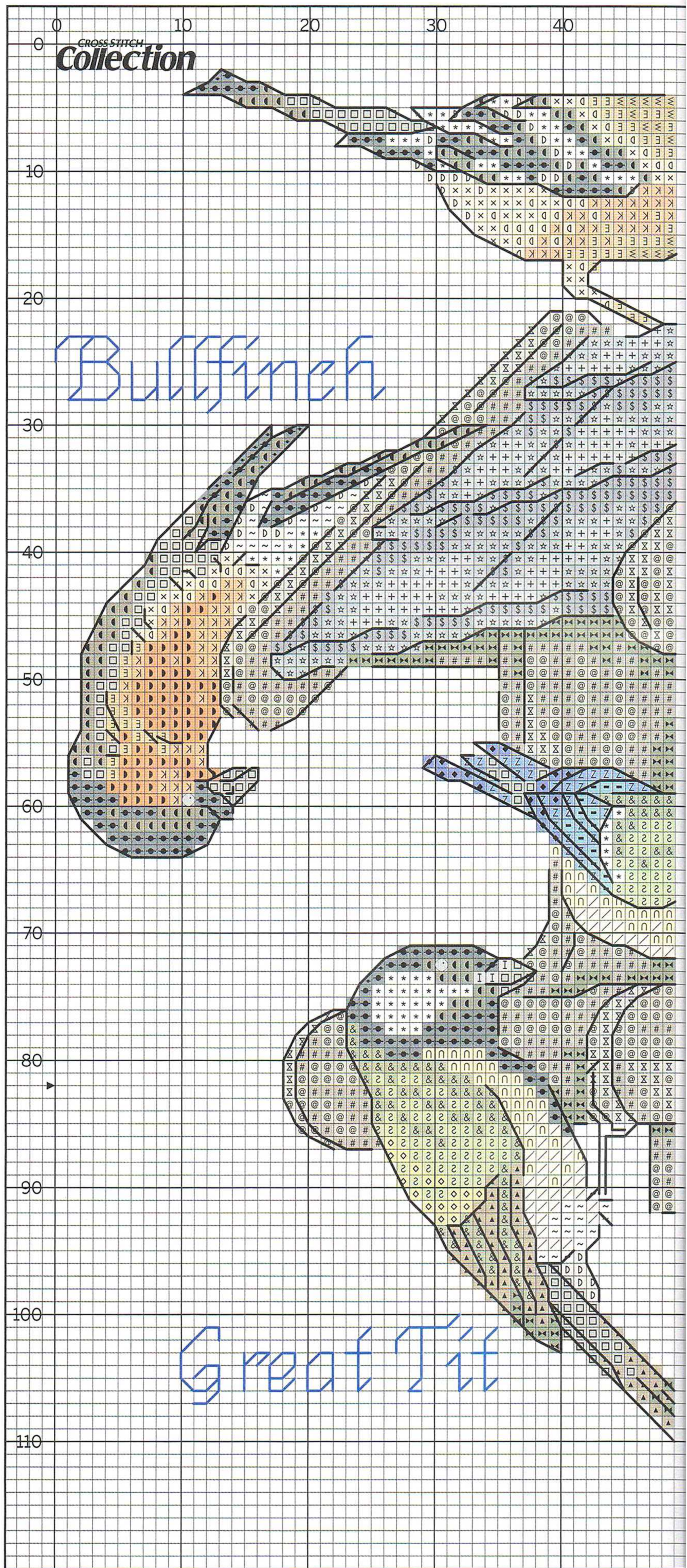
## Attach beads with matching cotton

|   |   |
|---|---|
| ● | Mill Hill petite seed beads 42014 Black |
| ● | eyes                                    |

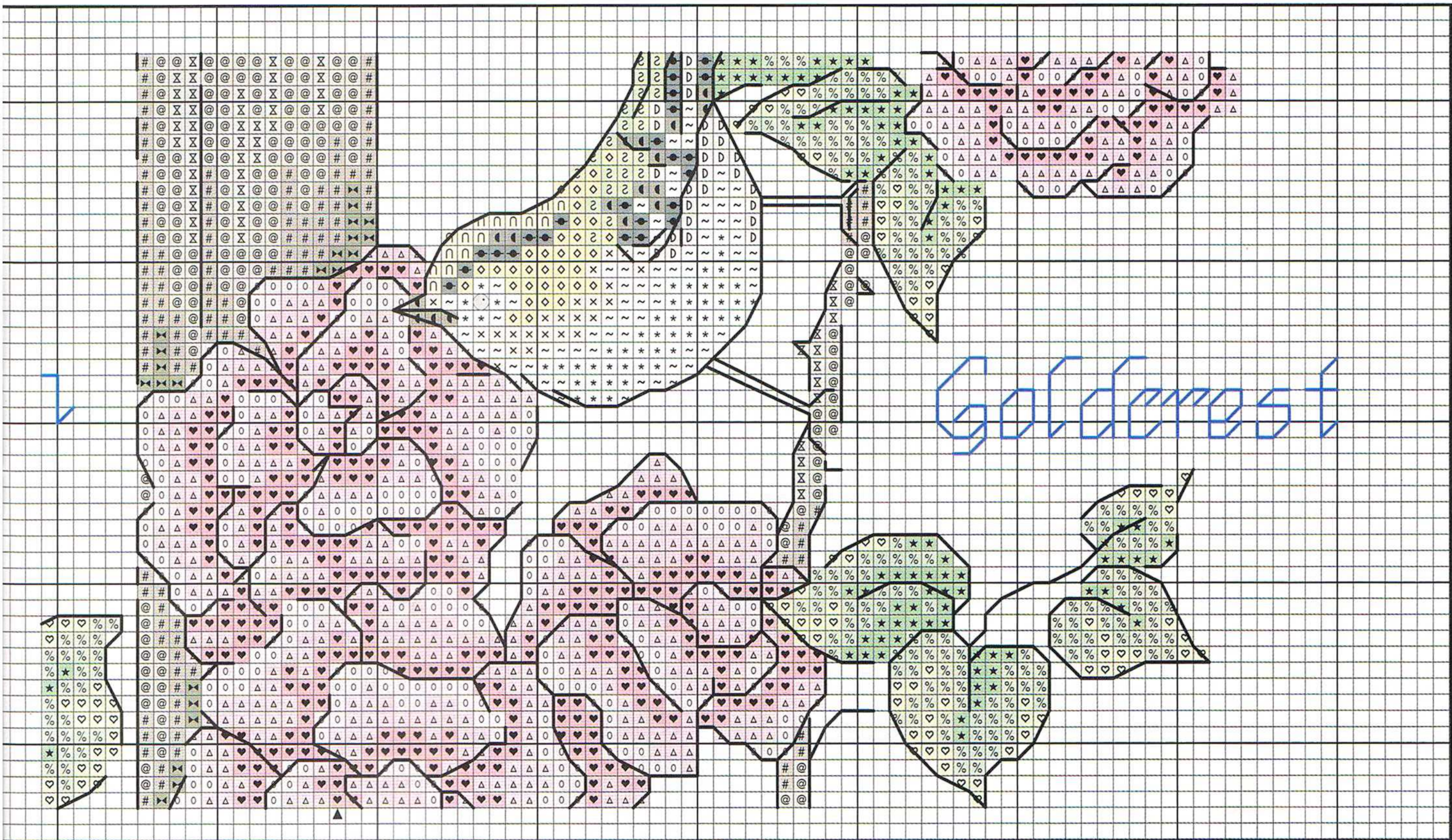
Stitched using DMC threads on 28HPI evenweave over two threads

Stitch count 164x135

Design area 11¾x9½in (30x24cm)



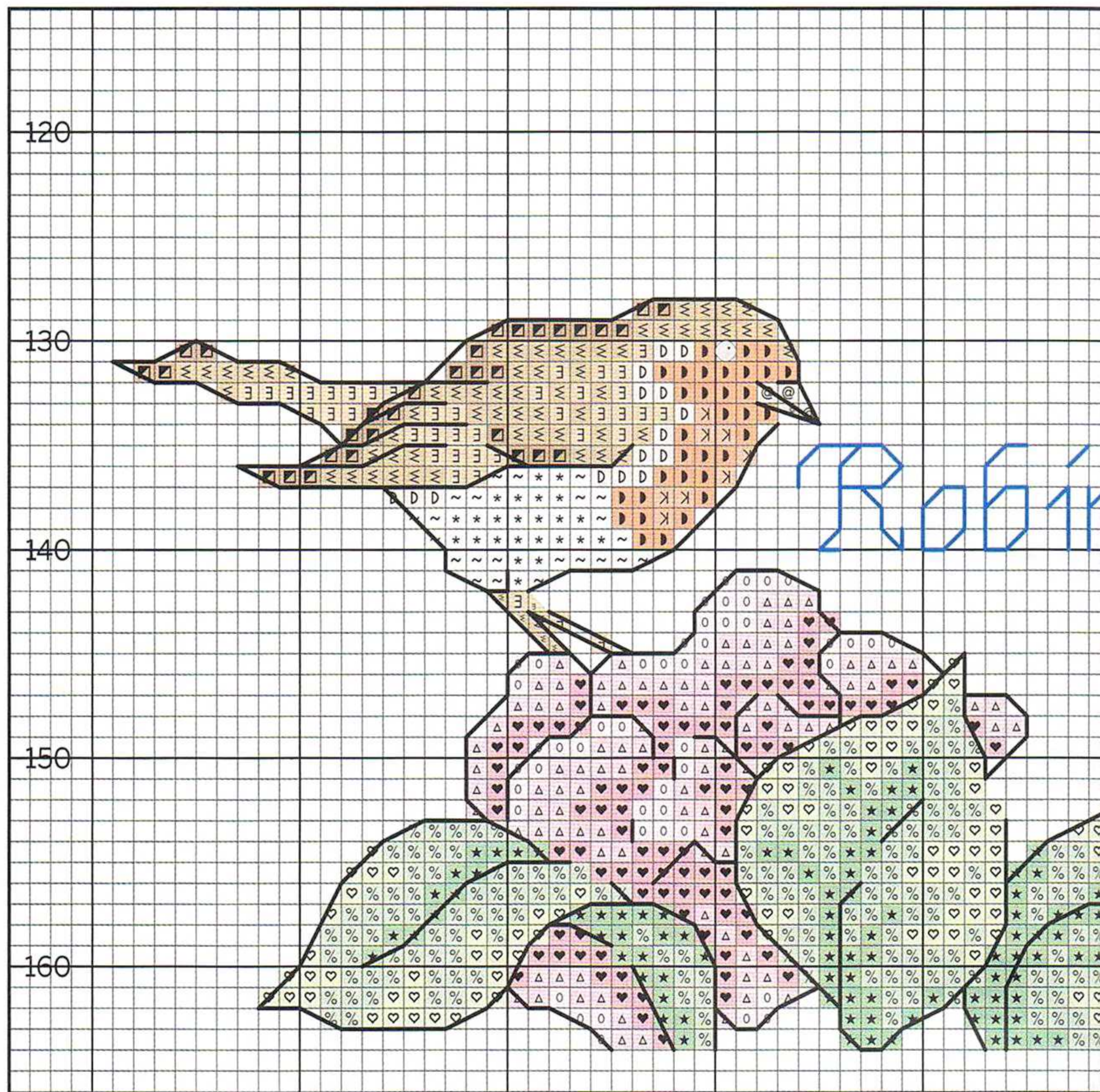






## Shopping list...

- ☑ 28HPI evenweave, light blue, 20x18in (51x46cm) Zweigart Brittny (Lugana), ref 3270/550 (or 14HPI aida)
- ☑ Stranded cotton, as listed in the key
- ☑ Seed beads, as listed in the key
- ✚ Frame with a 12½x11in (32x28cm) aperture, grey painted wood
- ◆ Items marked ☑ are included in the materials pack, items marked ✚ are not included.
- ◆ Fabric for the stitched piece supplied by Willow Fabrics – visit [www.willowfabrics.com](http://www.willowfabrics.com) or call ☎ 0800 0567811
- ◆ Turn to page 69 for hints and help!



**Matching** the style of your picture frame to the wood of the stitched birdtable will give your project a chic rustic finish



## ▶ Starting off

There are lots of different elements to this design which all have several colour changes. To help with your counting you will find it easier if you complete one whole element at a time rather than trying to work all the stitches in the same colour. Plan what order you are going to stitch the design before you begin by taking a close look at the chart and photograph.

## Stitching the design

Fold your fabric in half both ways to find the centre and start stitching from this point. All the cross stitch is worked in two strands of stranded cotton over two threads of the evenweave fabric.

### Changing colours

When there are several colour changes used in a design like this one, it's worth spending a little time planning in which order you are going to stitch your colours before you start. This will help to prevent you constantly needing to change the threads in your needle.

Many cross stitchers find it easier to keep several needles threaded up with different colours to avoid all that stopping and starting. If you are working five or six different colours close together then keep a corresponding number of needles threaded up and when you have finished