

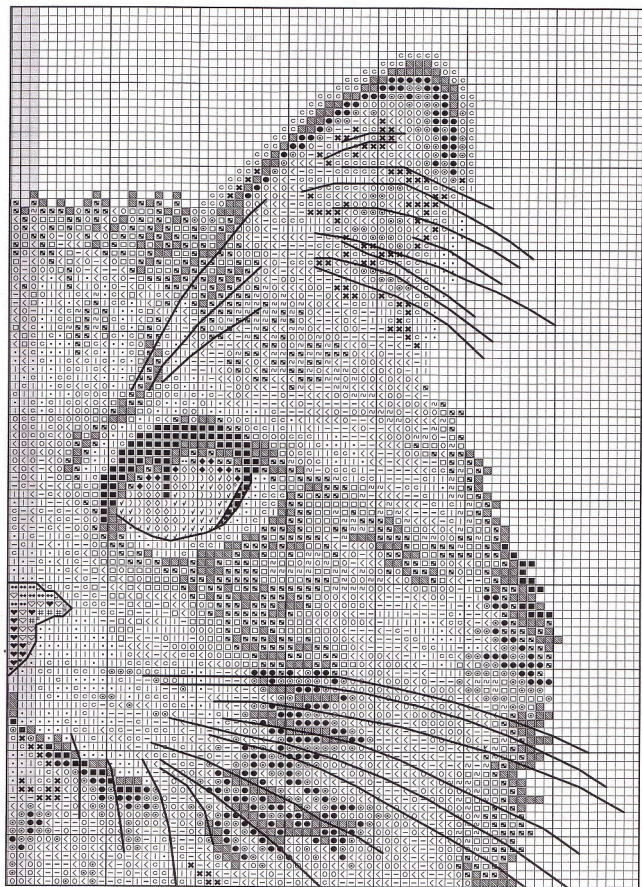
706-K

Majestic Tabby

©2005 Jeanette Crews Designs, Inc.



Gray area indicates a three stitch overlap. Do not restitch.



706-K

Majestic Tabby

©2005 Jeanette Crews Designs, Inc.



Jeanette Crews Designs

P.O. Box 3136, Townsend, GA 31231 USA
www.jeanettecrews.com info@jeanettecrews.com

Full Crosses

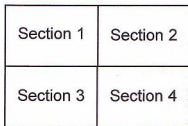
Symbol	Color	DMC	Anchor
••	White	000	2
√	Moss Green-VY LT	165	293
□	Pewter-LT	169	1040
■	Black	310	403
▨	Pewter Gray	317	815
∞	Steel Gray-LT	318	399
✕	Tan-LT	437	362
◆	Moss Green-DK	580	817
*	Moss Green	581	844
○	Beige Gray-VY DK	640	233
<	Beige Gray-DK	642	859
-	Beige Gray-MD	644	391
.	Cream	712	926
◇	Olive Green-LT	734	945
c	Tan-VY LT	738	372
l	Tan-UL VY LT	739	387
#	Coffee Brown-UL DK	938	380
●	Brown Gray-VY DK	3021	273
♥	Terra Cotta-VY DK	3777	340
••	Terra Cotta-LT	3778	1013
⊙	Brown Gray-DK	3787	400
▨	Pewter Gray-VY DK	3799	401
)	Moss Green-LT	3819	278
♡	Terra Cotta-MD	3830	339

Project Information:

148W x 113H = 10.5" x 8".
The design was stitched on 14 Ct. Black Aida. Use 2 strands of floss for the full and quarter cross stitches and 1 strand for the backstitch, unless otherwise noted in the color key.

**706-K
Majestic Tabby**

**CHART PLACEMENT
DIAGRAM**



Quarter Stitches

Symbol	Color	DMC	Anchor
√	Moss Green-VY LT	165	293
■	Black	310	403
▨	Pewter Gray	317	815
∞	Steel Gray-LT	318	399
○	Beige Gray-VY DK	640	233
.	Cream	712	926
◇	Olive Green-LT	734	945
c	Tan-VY LT	738	372
l	Tan-UL VY LT	739	387
#	Coffee Brown-UL DK	938	380
♥	Terra Cotta-VY DK	3777	340
••	Terra Cotta-LT	3778	1013
▨	Pewter Gray-VY DK	3799	401
♡	Terra Cotta-MD	3830	339

Backstitching

Symbol	Color	DMC	Anchor
—	White. Use 1 strand for whiskers, eyebrows and ear hairs as indicated	000	2
—	Black. Use 1 strand to define bottom of eyes	310	403
—	Coffee Brown-UL DK. Use 1 strand on lower half of nose as indicated	938	381
—	Terra Cotta-VY DK. Use 1 strand on top half and left hand side of nose	3777	1015

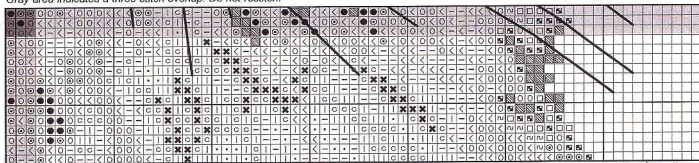


Jeanette Crews Designs

Rt. 3, Box 3136, Townsend, GA 31331 USA
www.jeanettecrews.com info@jeanettecrews.com

Toll Free Order Line 1-800-241-1962
Customer Service (912) 832-3999
Fax (912) 832-3990

Gray area indicates a three stitch overlap. Do not restitch.



©2005 Jeanette Crews Designs, Inc.

Full Crosses

Symbol	Color	DMC	Anchor
••	White	000	2
∇	Moss Green-VY LT	165	293
▣	Pewter-LT	169	1040
■	Black	310	403
■	Pewter Gray	317	815
n	Steel Gray-LT	318	399
✕	Tan-LT	437	362
◆	Moss Green-DK	580	817
*	Moss Green	581	844
<	Beige Gray-VY DK	640	233
>	Beige Gray-DK	642	859
-	Beige Gray-MD	644	391
.	Cream	712	926
◇	Olive Green-LT	734	945
c	Tan-VY LT	738	372
l	Tan-UL VY LT	739	387
#	Coffee Brown-UL DK	938	380
●	Brown Gray-VY DK	3021	273
♥	Terra Cotta-VY DK	3777	340
♦♦	Terra Cotta-LT	3778	1013
⊗	Brown Gray-DK	3787	400
⊗	Pewter Gray-VY DK	3799	401
⊗	Moss Green-LT	3819	278
∇	Terra Cotta-MD	3830	339

Quarter Stitches

Symbol	Color	DMC	Anchor
∇	Moss Green-VY LT	165	293
■	Black	310	403
■	Pewter Gray	317	815
n	Steel Gray-LT	318	399
<	Beige Gray-VY DK	640	233
.	Cream	712	926
◇	Olive Green-LT	734	945
c	Tan-VY LT	738	372
l	Tan-UL VY LT	739	387
#	Coffee Brown-UL DK	938	380
♥	Terra Cotta-VY DK	3777	340
♦♦	Terra Cotta-LT	3778	1013
⊗	Pewter Gray-VY DK	3799	401
∇	Terra Cotta-MD	3830	339

Backstitching

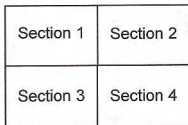
Symbol	Color	DMC	Anchor
—	White. Use 1 strand for whiskers, eyebrows and ear hairs as indicated	000	2
—	Black. Use 1 strand to define bottom of eyes	310	403
—	Coffee Brown-UL DK. Use 1 strand on lower half of nose as indicated	938	381
—	Terra Cotta-VY DK. Use 1 strand on top half and left hand side of nose	3777	1015

Project Information:

148W x 113H = 10.5" x 8".
The design was stitched on 14 Ct. Black Aida. Use 2 strands of floss for the full and quarter cross stitches and 1 strand for the backstitch, unless otherwise noted in the color key.

706-K Majestic Tabby

CHART PLACEMENT DIAGRAM



Jeanette Crews Designs

Rt. 3, Box 3136, Townsend, GA 31331 USA
www.jeanettecrews.com info@jeanettecrews.com

Toll Free Order Line 1-800-241-1962
Customer Service (912) 832-3999
Fax (912) 832-3990