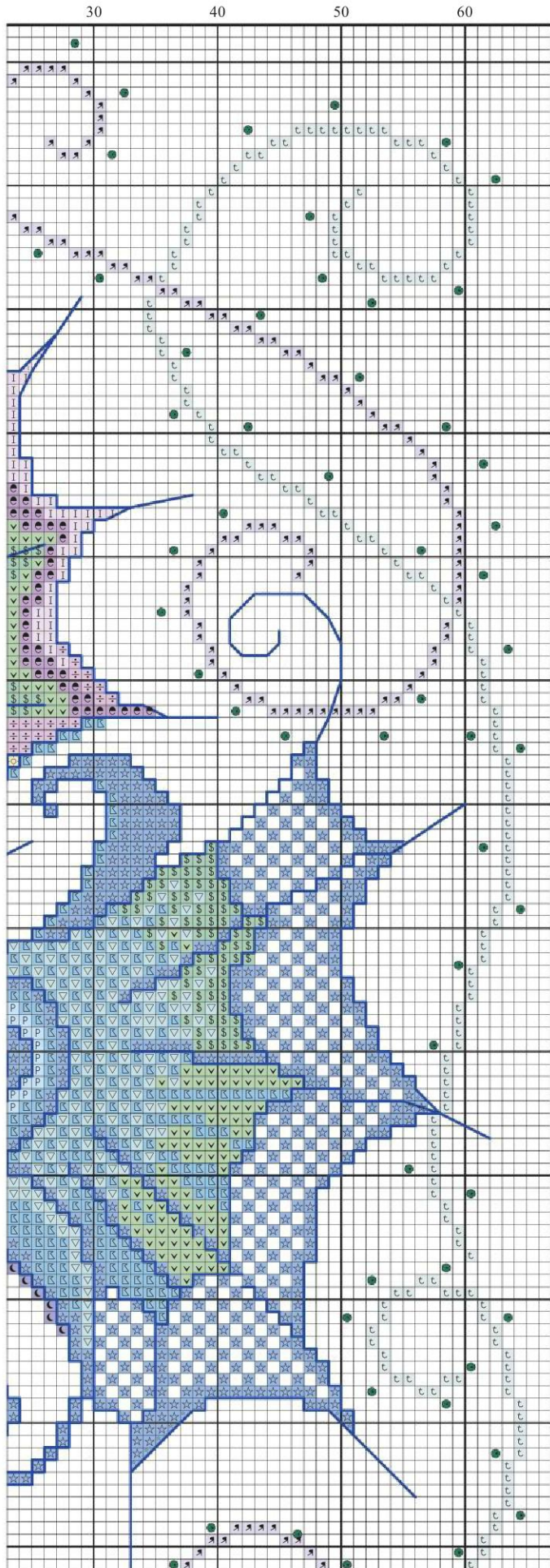


Seahorse Hanging chart (top left)





Seahorse Hanging chart (top right)



**KATIE,**  
PRODUCTION  
EDITOR

“From the gorgeous colours to the sparkly jewels, there’s something extra-special about this piece. I can’t take my eyes off it!”



## Seahorse Hanging key

### ✦ Cross stitch in two strands

	DMC	Anchor	Madeira	
∩	blanc	2	2402	white
⌘	155	1030	902	purple
?	165	278	1414	light lime green
◆	166	280	1611	lime green
I	210	108	802	lilac
■	310	403	2400	black
⊖	553	98	712	mauve
☉	676	891	2208	sand
⌚	680	901	2210	straw
⬛	791	178	904	dark plum
☾	792	177	905	plum
⬜	995	410	1102	dark electric blue
P	996	433	1105	light electric blue
t	3761	928	1001	sky blue
\$	3812	188	2706	dark emerald
⊖	3837	111	713	dark lilac
⌚	3843	1089	1103	electric blue
▽	3846	1090	103	turquoise
∨	3851	187	1202	emerald

### ✦ Cross stitch in two strands Kreinik #4 Braid

☆	094		star blue
---	-----	--	-----------

### ✦ Backstitch in one strand

—	310	403	2400	black
---	-----	-----	------	-------

### ✦ Backstitch in one strand Kreinik #4 Braid

—	051HL		sapphire
---	-------	--	----------

### ✦ Mill Hill seed beads

●	02074		brilliant teal
---	-------	--	----------------

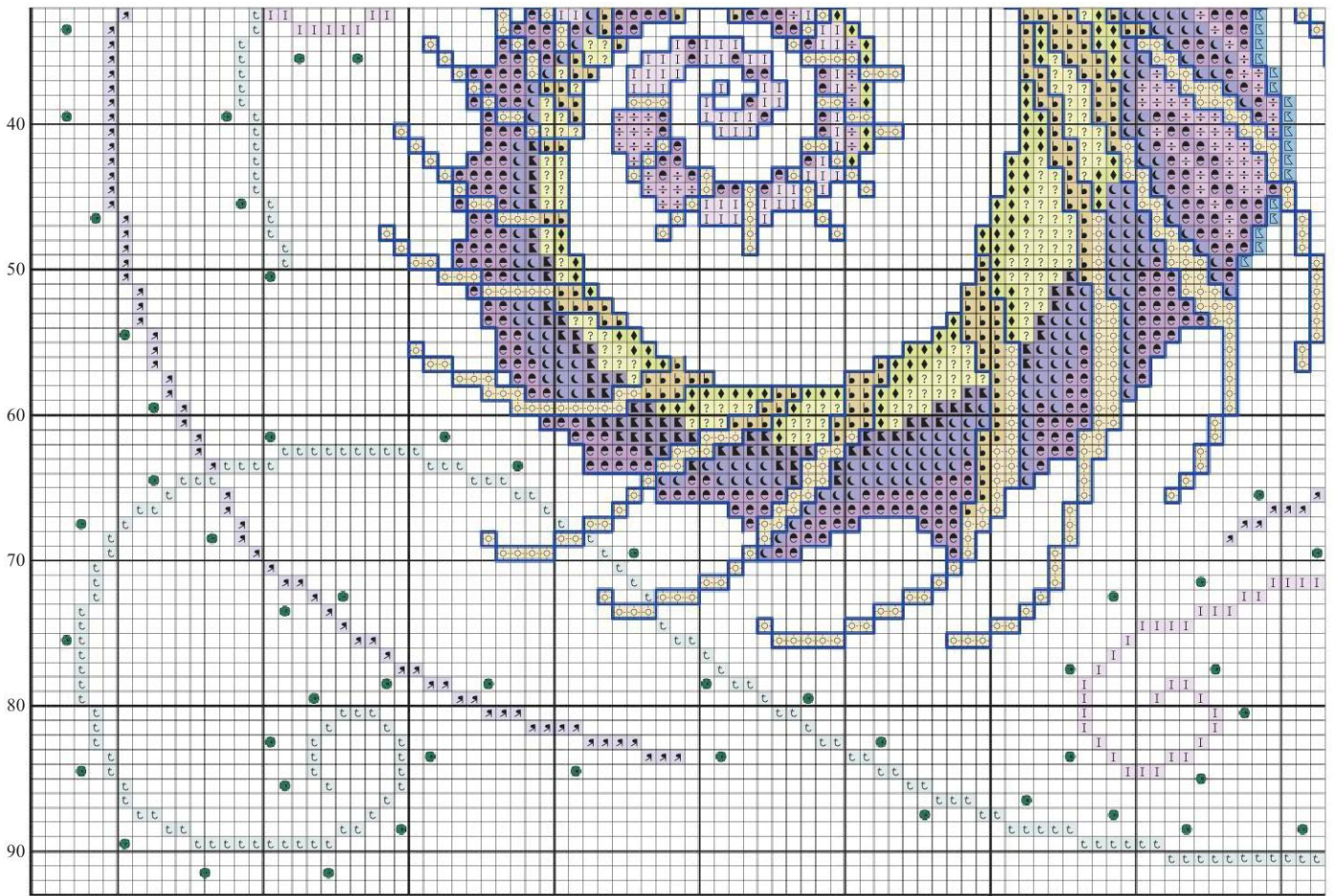
**STITCH COUNT** 184 high x 131 wide

**DESIGN AREA** 14 HPI (28-count evenweave) – 33.5x24cm (13¼x9½in)

**SKEINS NEEDED** 3x51HL (sapphire)

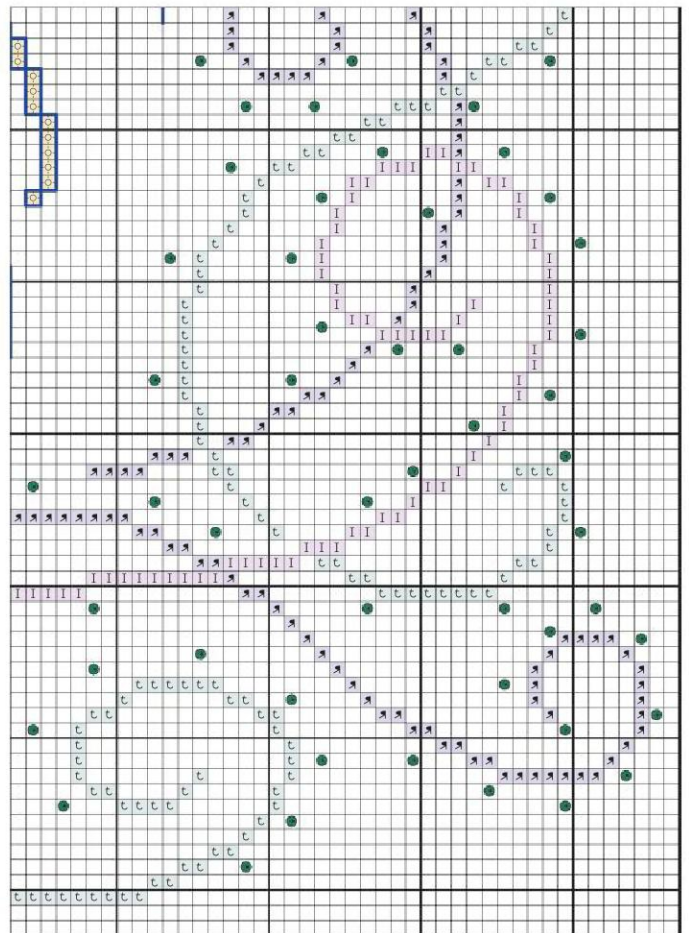
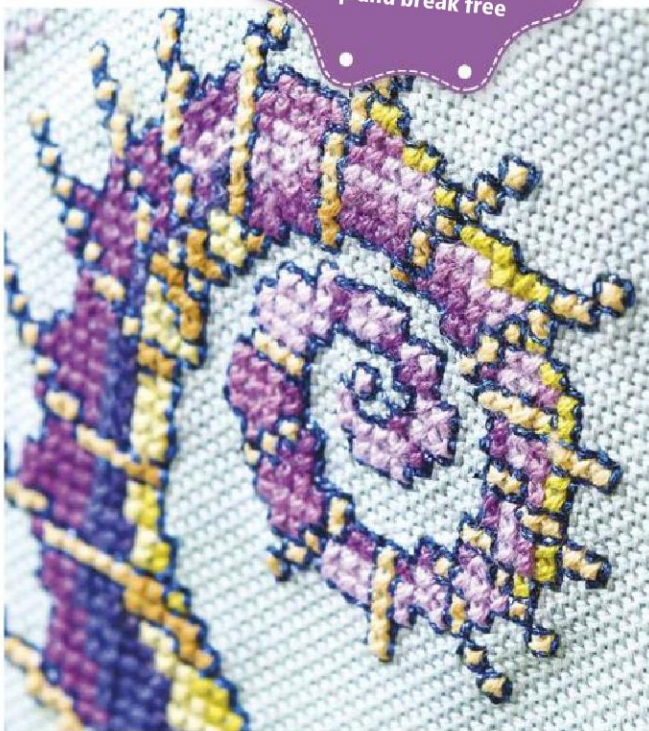
This design was stitched using DMC stranded cotton, Kreinik #4 Braid and Mill Hill seed beads on 28-count evenweave over two threads of the fabric





Seahorse Hanging chart (bottom left)

**TOP TIP**  
 When using metallic threads, leave a slightly longer tail than usual, as they're more likely to slip and break free



Seahorse Hanging chart (bottom right)