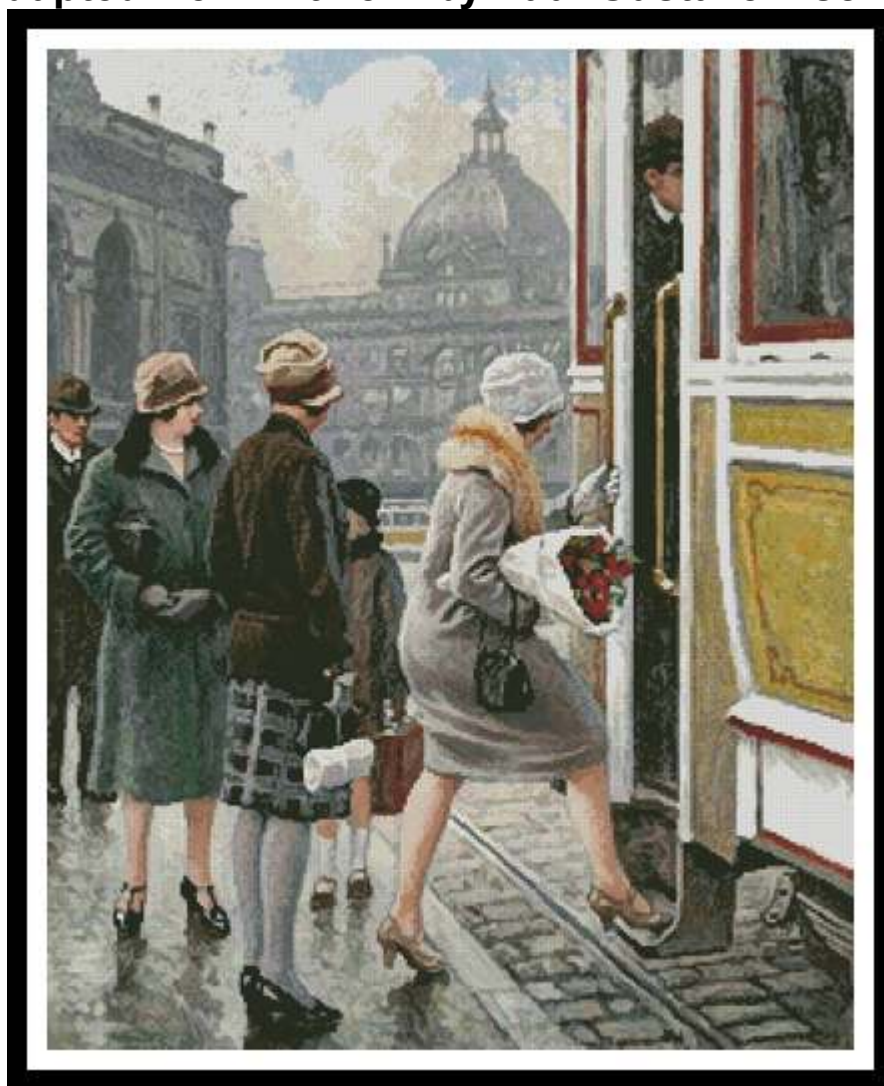


At the Tram Stop

Adapted from Artwork by Paul Gustave Fischer



Cross Stitch Design by Tereena Clarke.

Completed Size = 242w x 300h Stitches

14 Count, 17.5w x 21.5h inches (44cm x 55cm)

16 Count, 15.5w x 19h inches (39cm x 48cm)

18 Count, 13.5w x 17h inches (34cm x 43cm)

Uses 67 DMC cotton colours. Only full cross stitches are used in this pattern.

Pattern Instructions

* This pattern can be worked on any fabric type, colour or count you prefer. To work out the size of the finished article, take the number of stitches wide and high and divide it by the count of your fabric (e.g. 14,16,18 count aida etc) to get the size in inches. Times it by 2.54 to get centimetres. We have the sizes in inches shown on the previous page. Also leave at least a few inches of fabric around each side of the design to assist in framing. The higher the fabric count the smaller the completed project will be.

* To put the pattern together look in the top and bottom corners. The page numbers in brackets show which page number it joins up to. Page 1 always starts at the top left hand side of the pattern. Our pages also have a shaded grey section. This indicates a 3 row overlap from adjoining pages to assist with reading the pattern. PLEASE DO NOT RESTITCH THIS AREA.

* You should begin at the centre of the pattern. To find the centre of the pattern it is just a matter of laying the pattern out and locating the arrows at the top and left hand side of the patterns, they are determined by dividing the stitch numbers wide and high in half. Where the two points meet in the middle, that is the centre.

* If you need more assistance to find the middle of your pattern or the page layout, please see the notes section on the colour symbol chart. The easiest way to stitch this pattern, as it has multiple pages, is to stitch one page at a time.

* We suggest using two strands of floss for each stitch and one strand for backstitching if the pattern calls for it.

We hope you enjoy stitching our pattern.

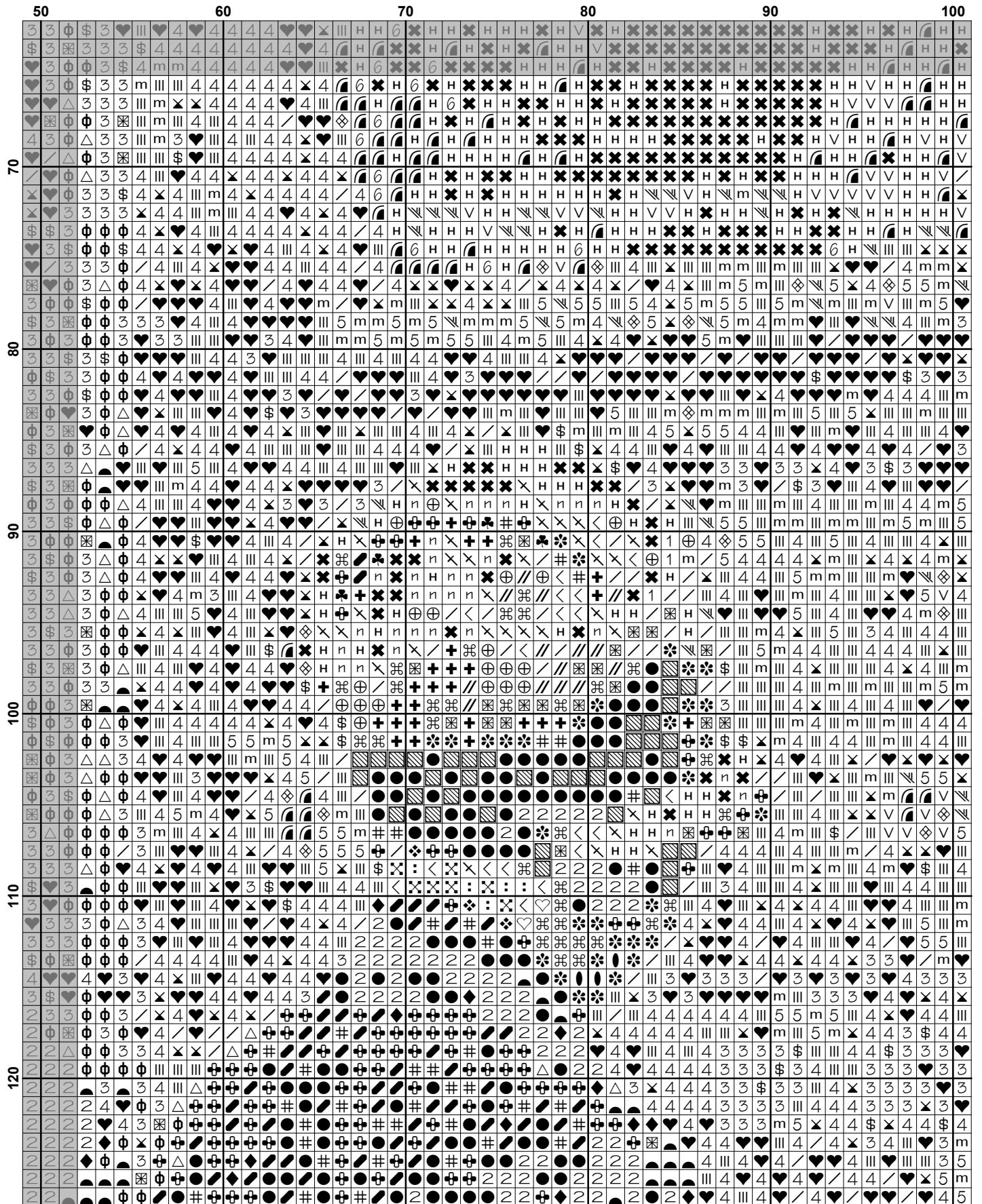
Thanks and Best Wishes
Tereena Clarke

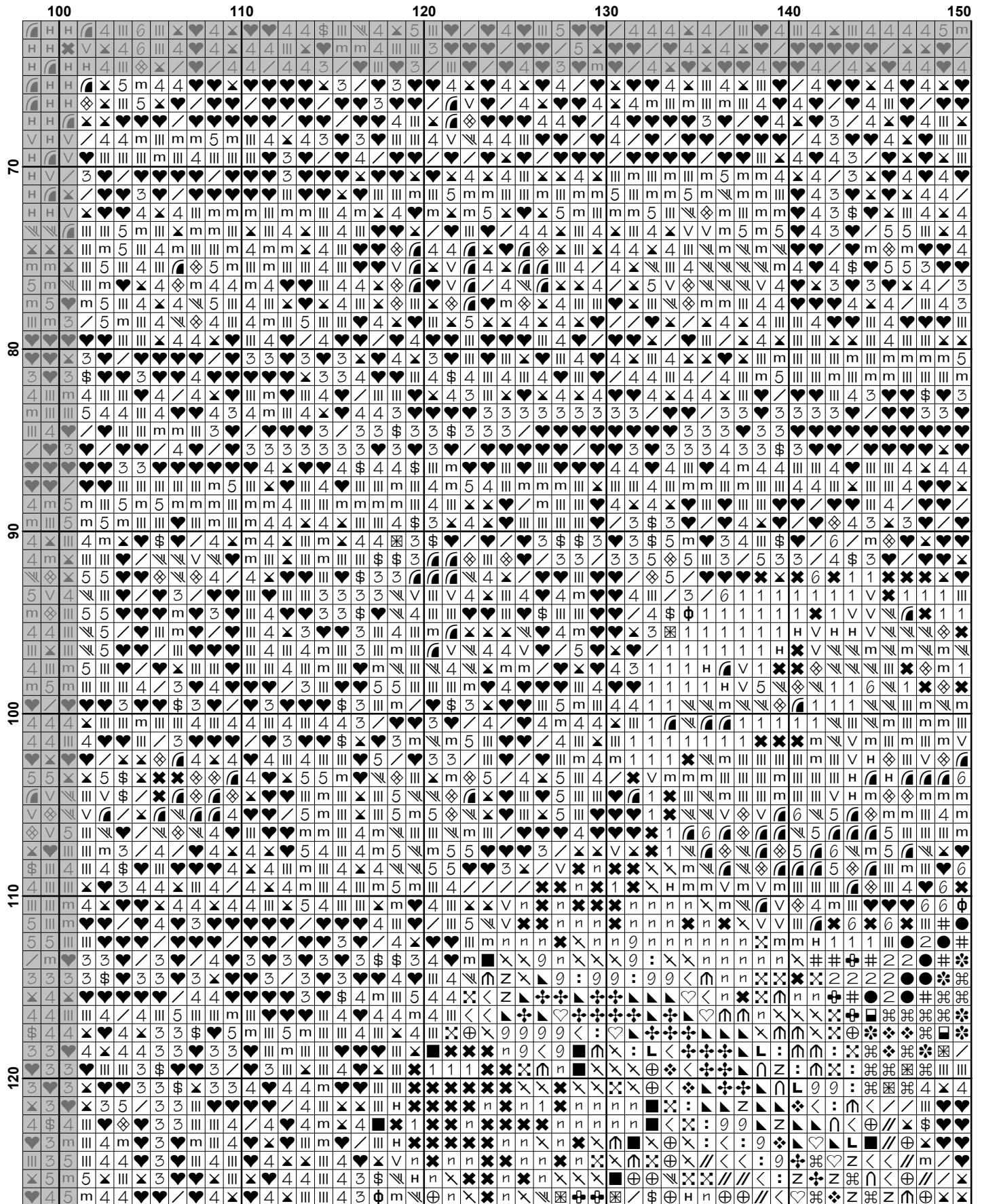
Artecy Cross Stitch
Po Box 3474
Tuggerah, NSW 2259
Australia

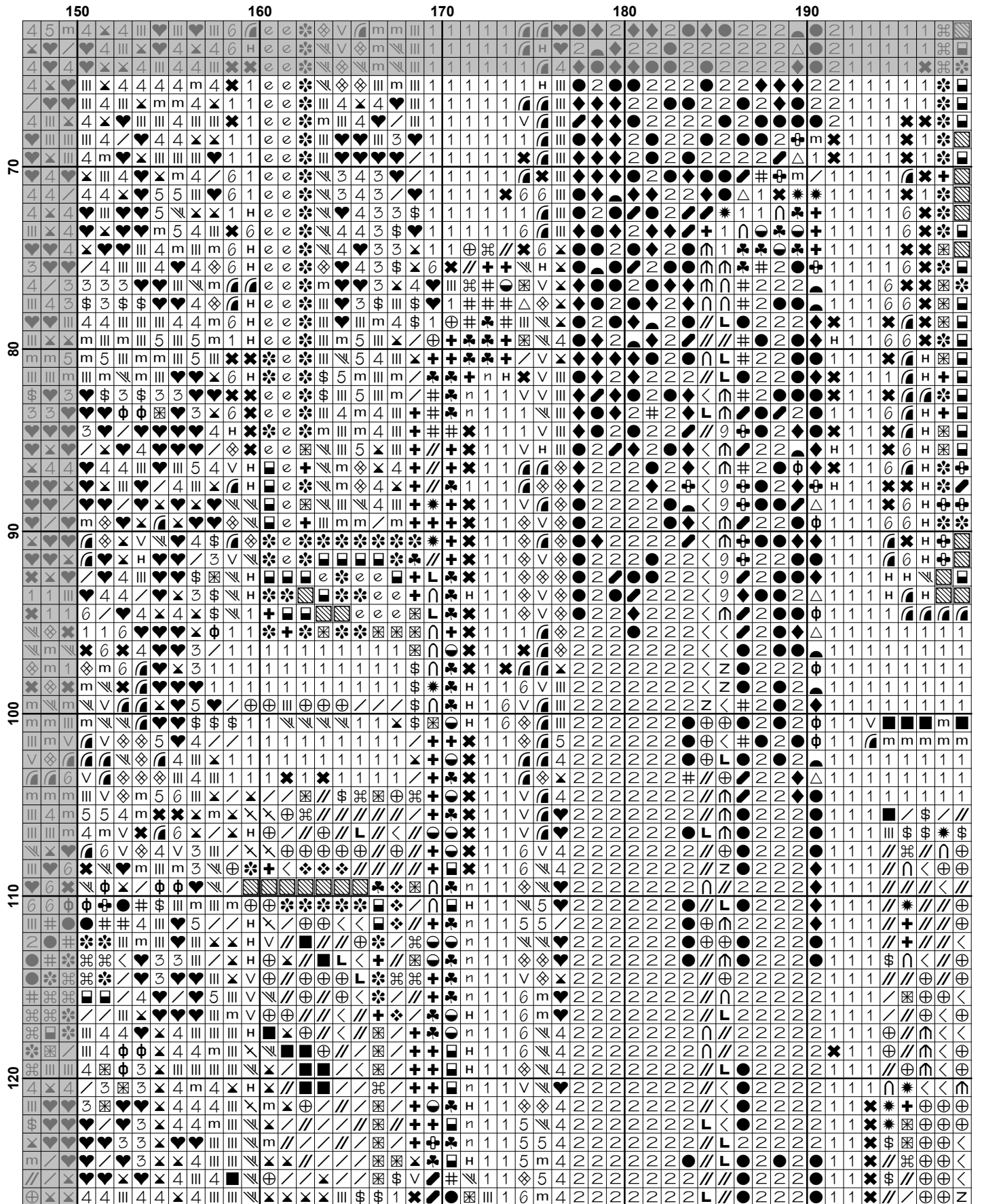
Websites: www.artecy.com and www.artecyshop.com
Email: artecy@artecy.com or stitch@artecyshop.com

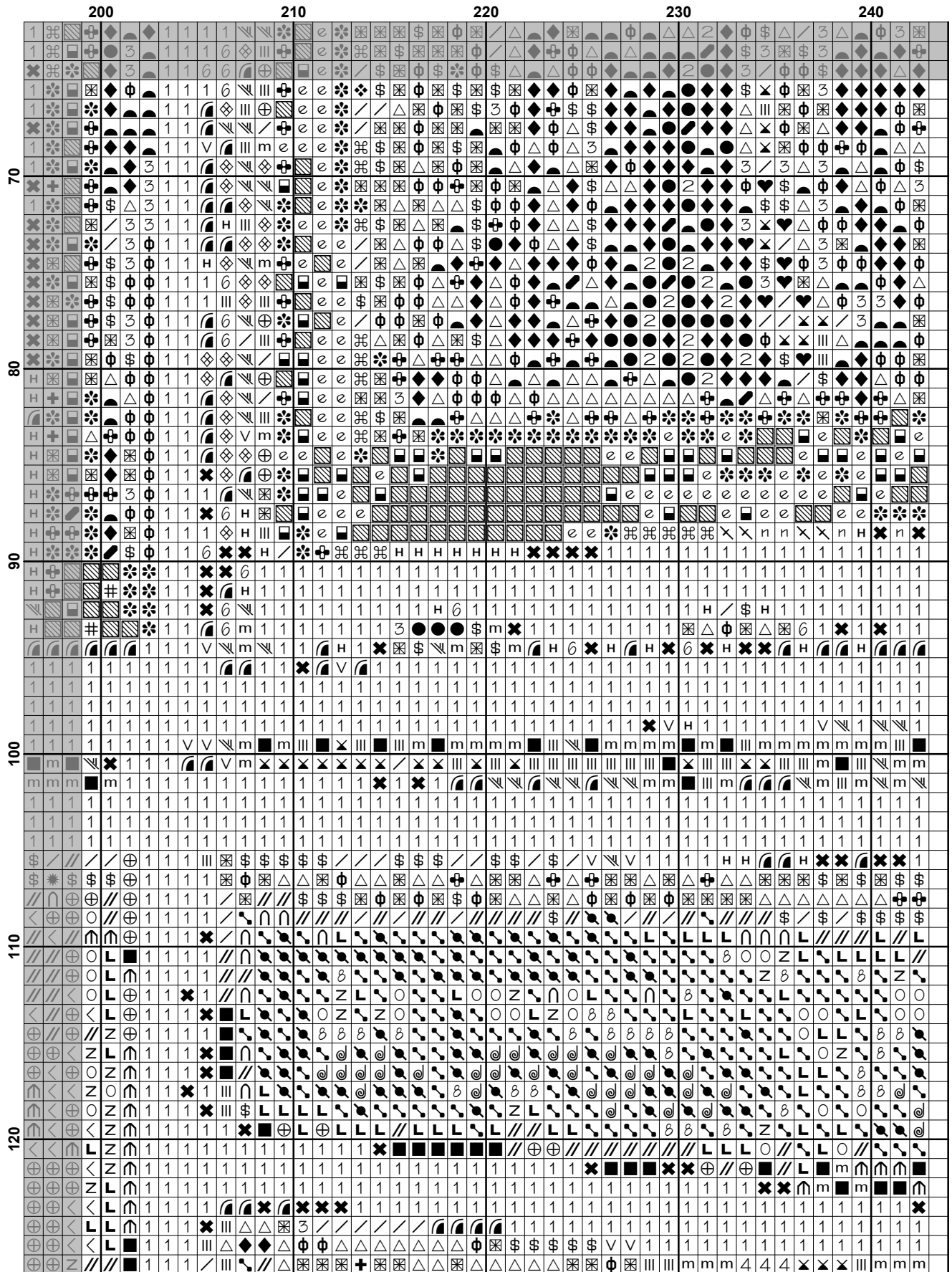
*Patterns are strictly for personal use only. It is against our copyright to make kits for sale from our designs or to sell, copy or redistribute this pattern in any form. You may not upload our patterns to any internet forums or groups or any other website. You may make 1 copy of this pattern for a working copy for your own personal use if needed.

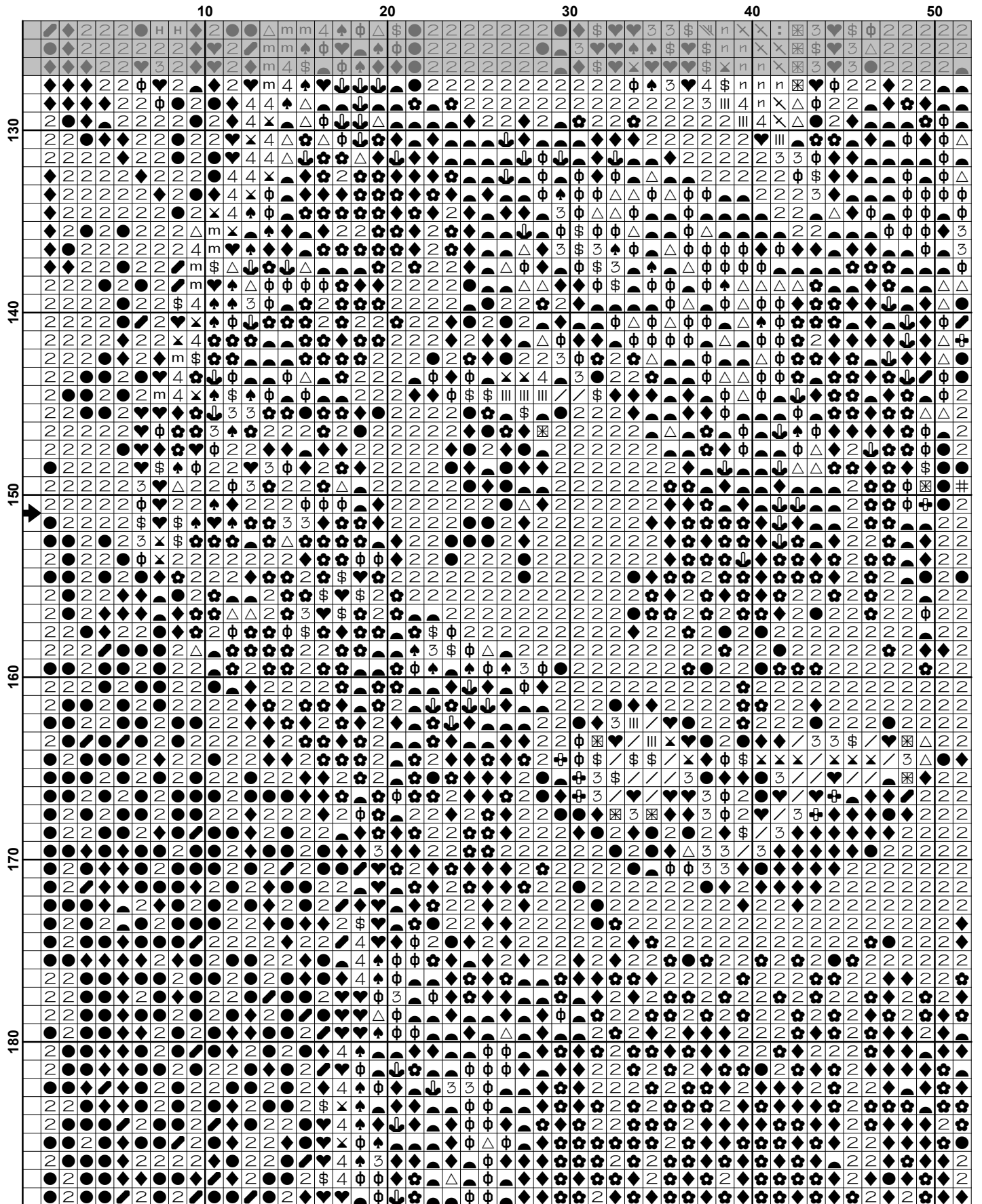
	50	60	70	80	90	100
10	1	1	1	1	1	1
11	1	1	1	1	1	1
12	1	1	1	1	1	1
13	1	1	1	1	1	1
14	1	1	1	1	1	1
15	1	1	1	1	1	1
16	1	1	1	1	1	1
17	1	1	1	1	1	1
18	1	1	1	1	1	1
19	1	1	1	1	1	1
20	1	1	1	1	1	1
21	1	1	1	1	1	1
22	1	1	1	1	1	1
23	1	1	1	1	1	1
24	1	1	1	1	1	1
25	1	1	1	1	1	1
26	1	1	1	1	1	1
27	1	1	1	1	1	1
28	1	1	1	1	1	1
29	1	1	1	1	1	1
30	1	1	1	1	1	1
31	1	1	1	1	1	1
32	1	1	1	1	1	1
33	1	1	1	1	1	1
34	1	1	1	1	1	1
35	1	1	1	1	1	1
36	1	1	1	1	1	1
37	1	1	1	1	1	1
38	1	1	1	1	1	1
39	1	1	1	1	1	1
40	1	1	1	1	1	1
41	1	1	1	1	1	1
42	1	1	1	1	1	1
43	1	1	1	1	1	1
44	1	1	1	1	1	1
45	1	1	1	1	1	1
46	1	1	1	1	1	1
47	1	1	1	1	1	1
48	1	1	1	1	1	1
49	1	1	1	1	1	1
50	1	1	1	1	1	1
51	1	1	1	1	1	1
52	1	1	1	1	1	1
53	1	1	1	1	1	1
54	1	1	1	1	1	1
55	1	1	1	1	1	1
56	1	1	1	1	1	1
57	1	1	1	1	1	1
58	1	1	1	1	1	1
59	1	1	1	1	1	1
60	1	1	1	1	1	1
61	1	1	1	1	1	1
62	1	1	1	1	1	1
63	1	1	1	1	1	1
64	1	1	1	1	1	1
65	1	1	1	1	1	1
66	1	1	1	1	1	1
67	1	1	1	1	1	1
68	1	1	1	1	1	1
69	1	1	1	1	1	1
70	1	1	1	1	1	1
71	1	1	1	1	1	1
72	1	1	1	1	1	1
73	1	1	1	1	1	1
74	1	1	1	1	1	1
75	1	1	1	1	1	1
76	1	1	1	1	1	1
77	1	1	1	1	1	1
78	1	1	1	1	1	1
79	1	1	1	1	1	1
80	1	1	1	1	1	1
81	1	1	1	1	1	1
82	1	1	1	1	1	1
83	1	1	1	1	1	1
84	1	1	1	1	1	1
85	1	1	1	1	1	1
86	1	1	1	1	1	1
87	1	1	1	1	1	1
88	1	1	1	1	1	1
89	1	1	1	1	1	1
90	1	1	1	1	1	1
91	1	1	1	1	1	1
92	1	1	1	1	1	1
93	1	1	1	1	1	1
94	1	1	1	1	1	1
95	1	1	1	1	1	1
96	1	1	1	1	1	1
97	1	1	1	1	1	1
98	1	1	1	1	1	1
99	1	1	1	1	1	1
100	1	1	1	1	1	1

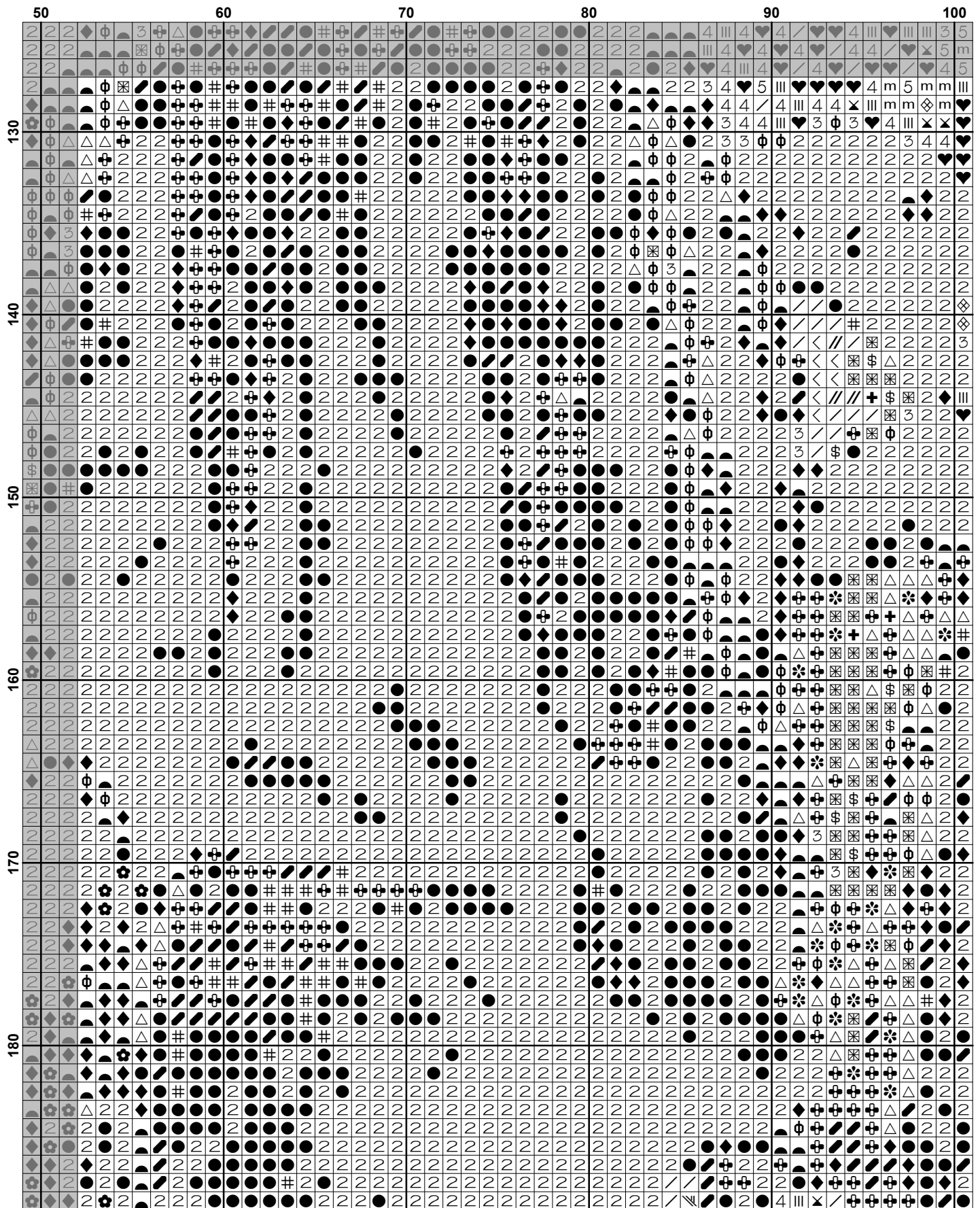


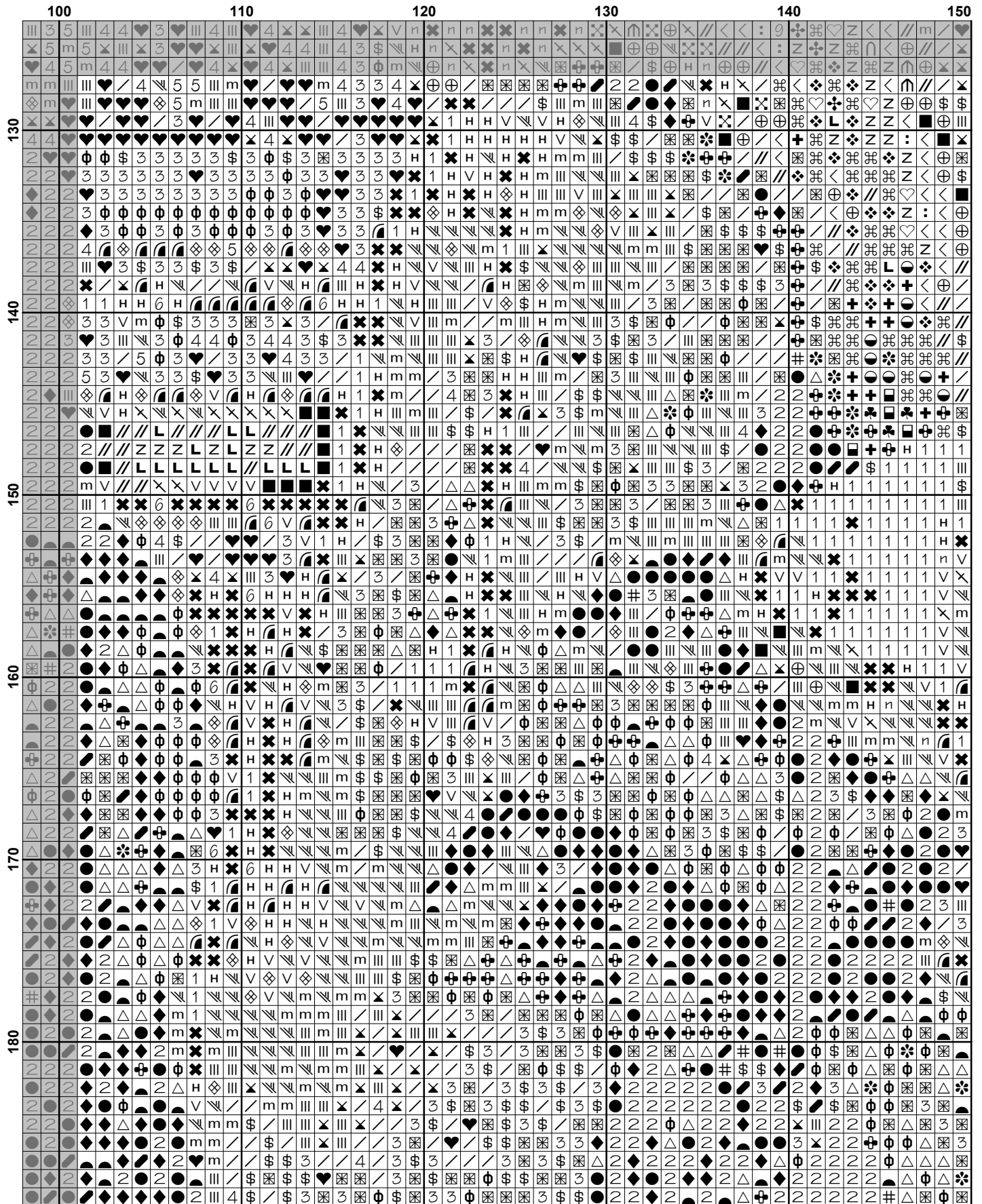


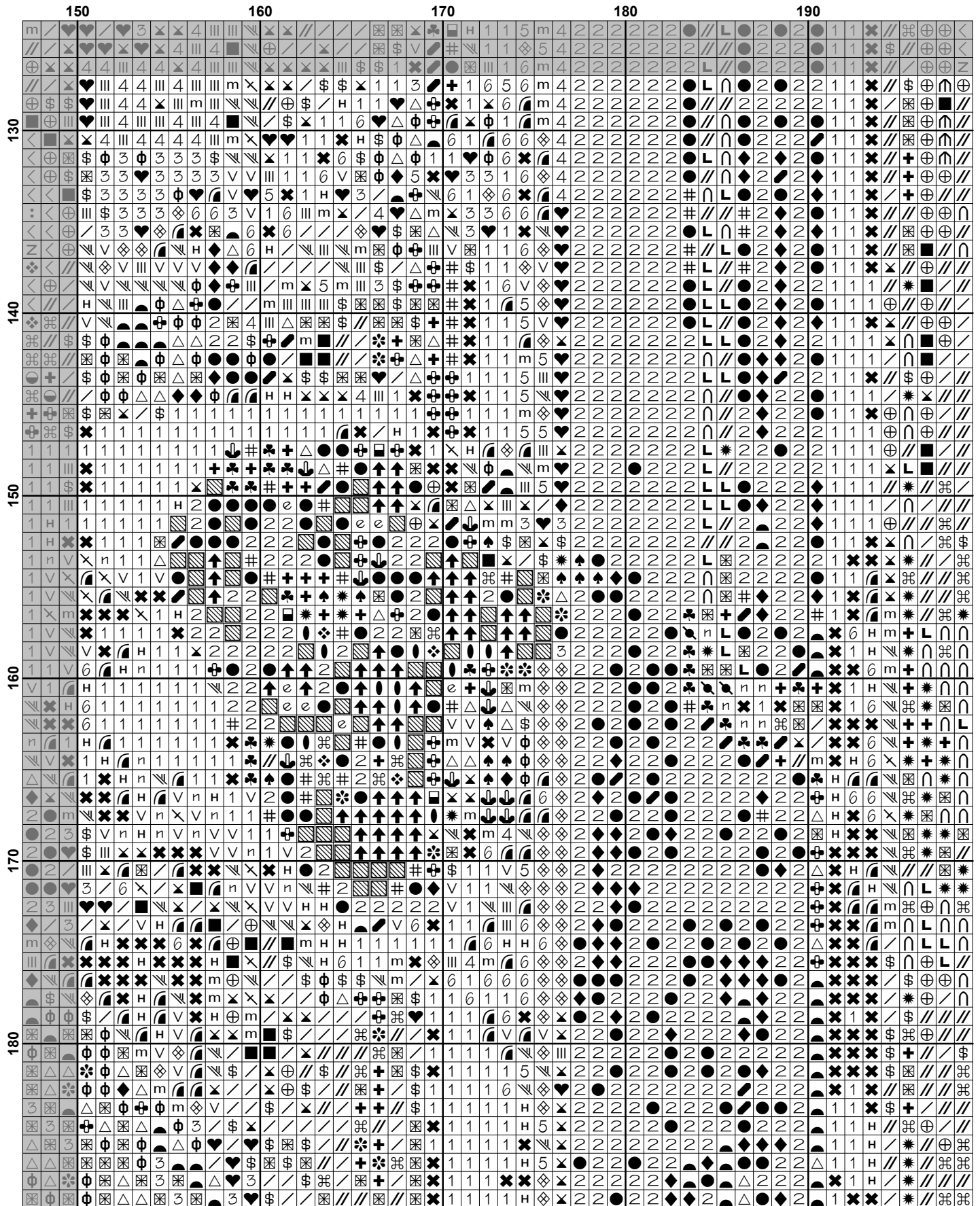


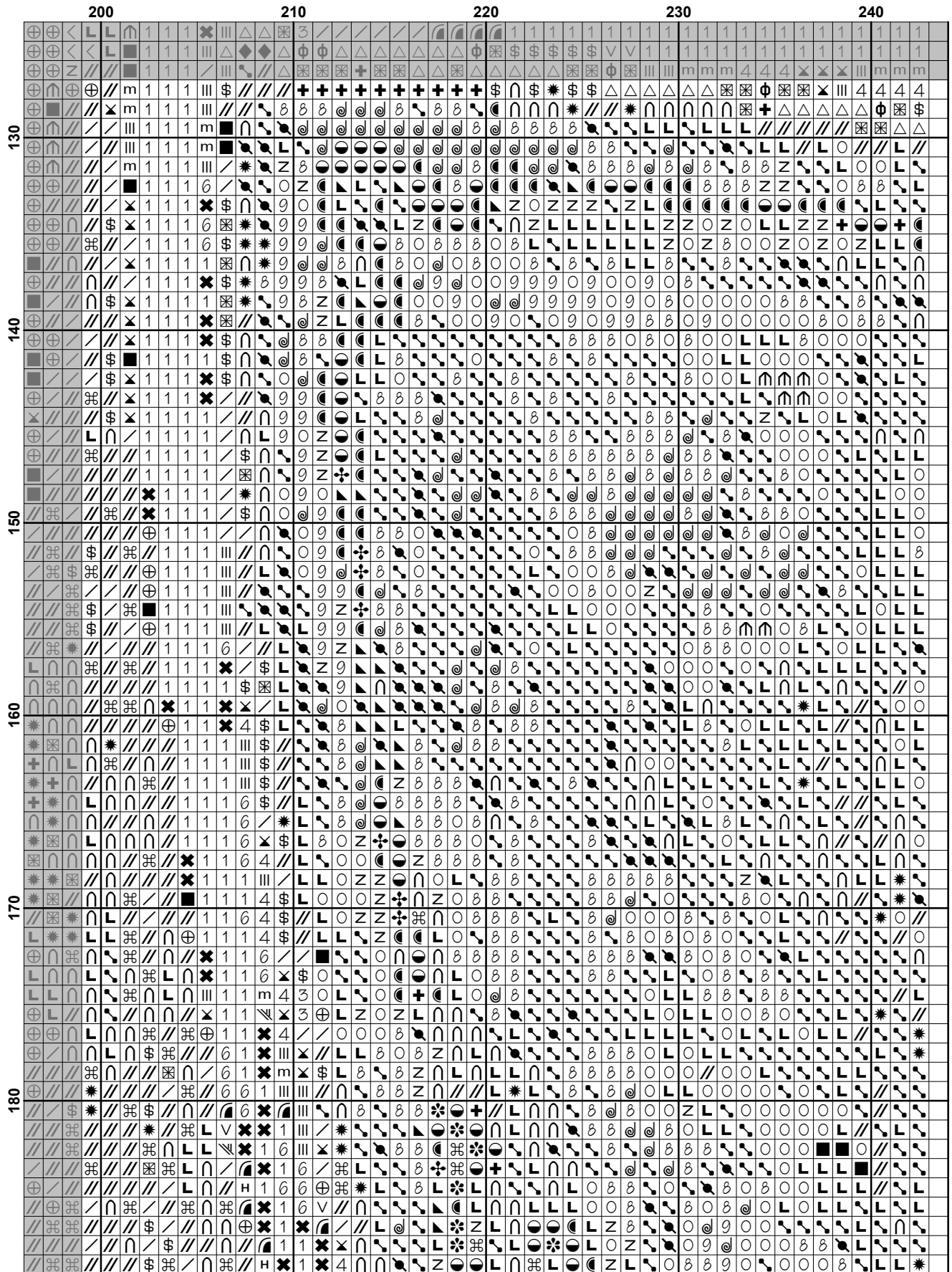


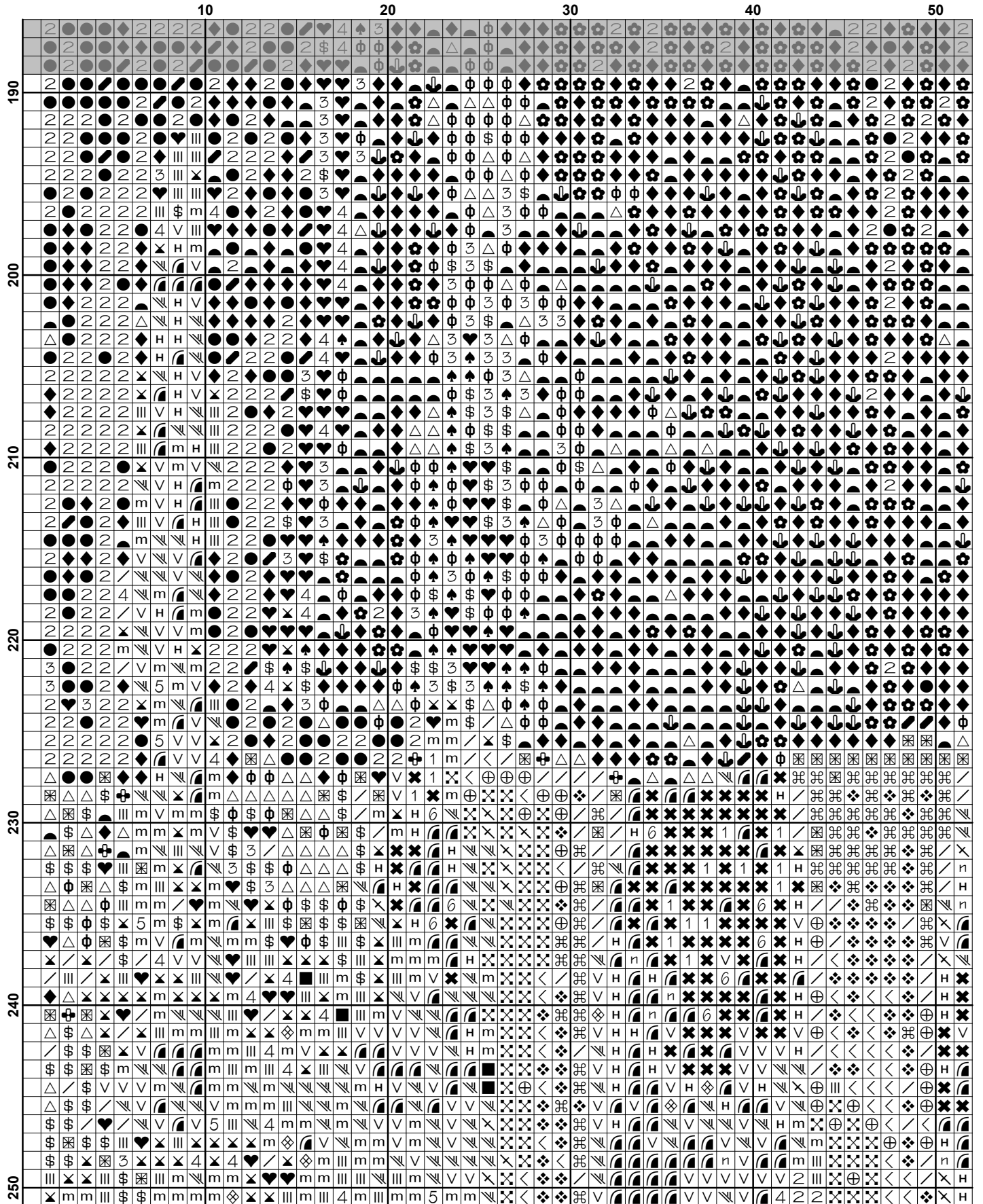


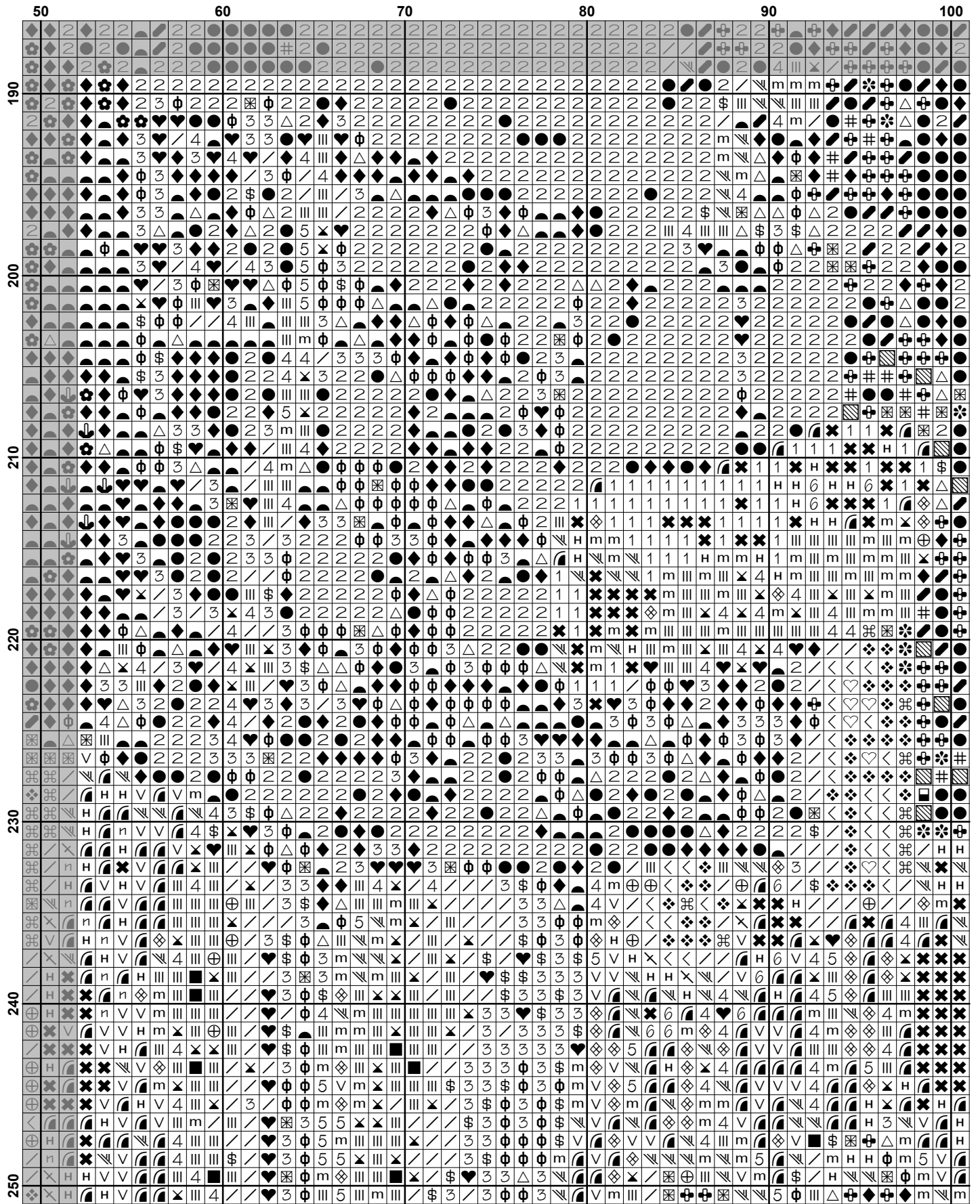


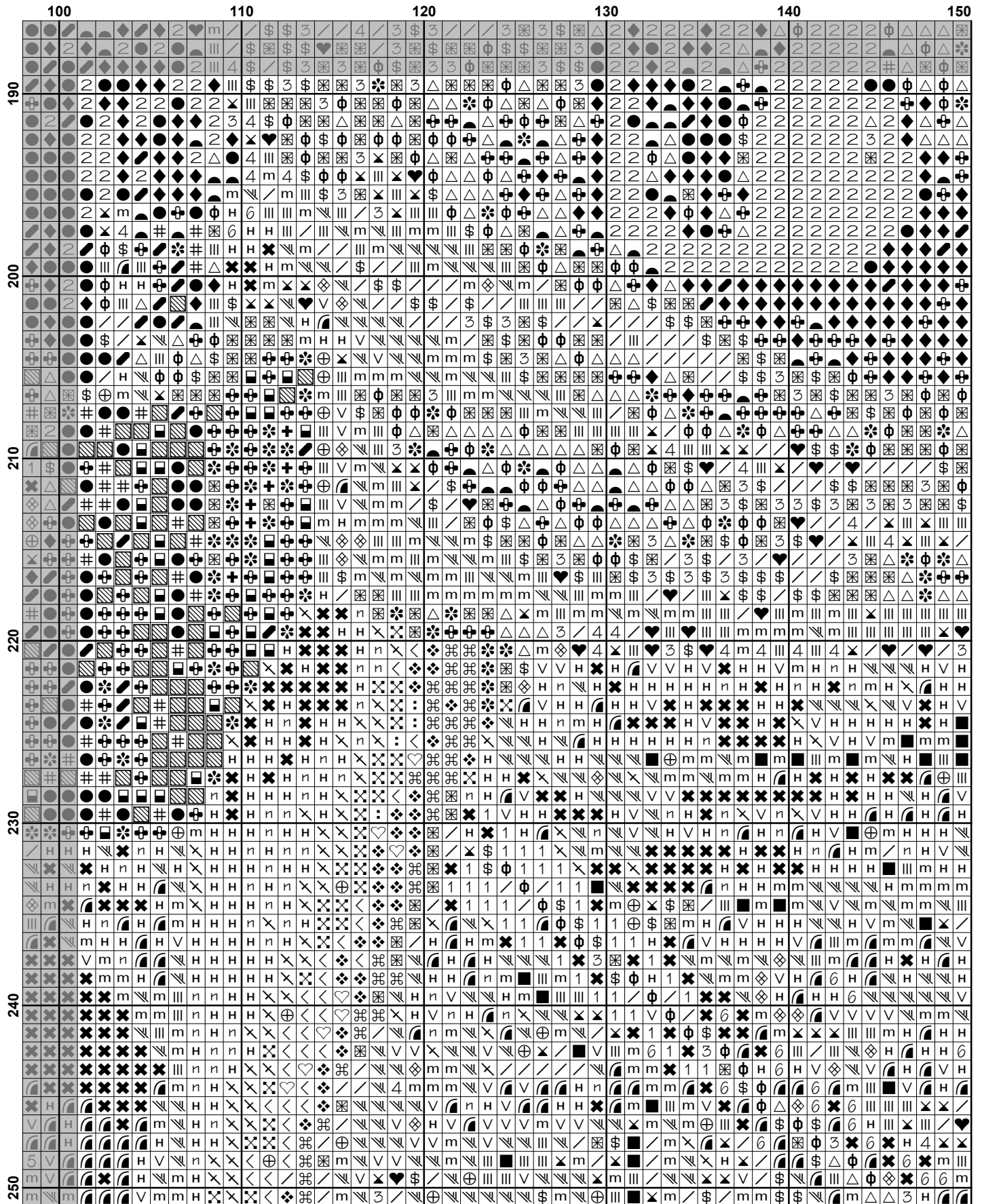


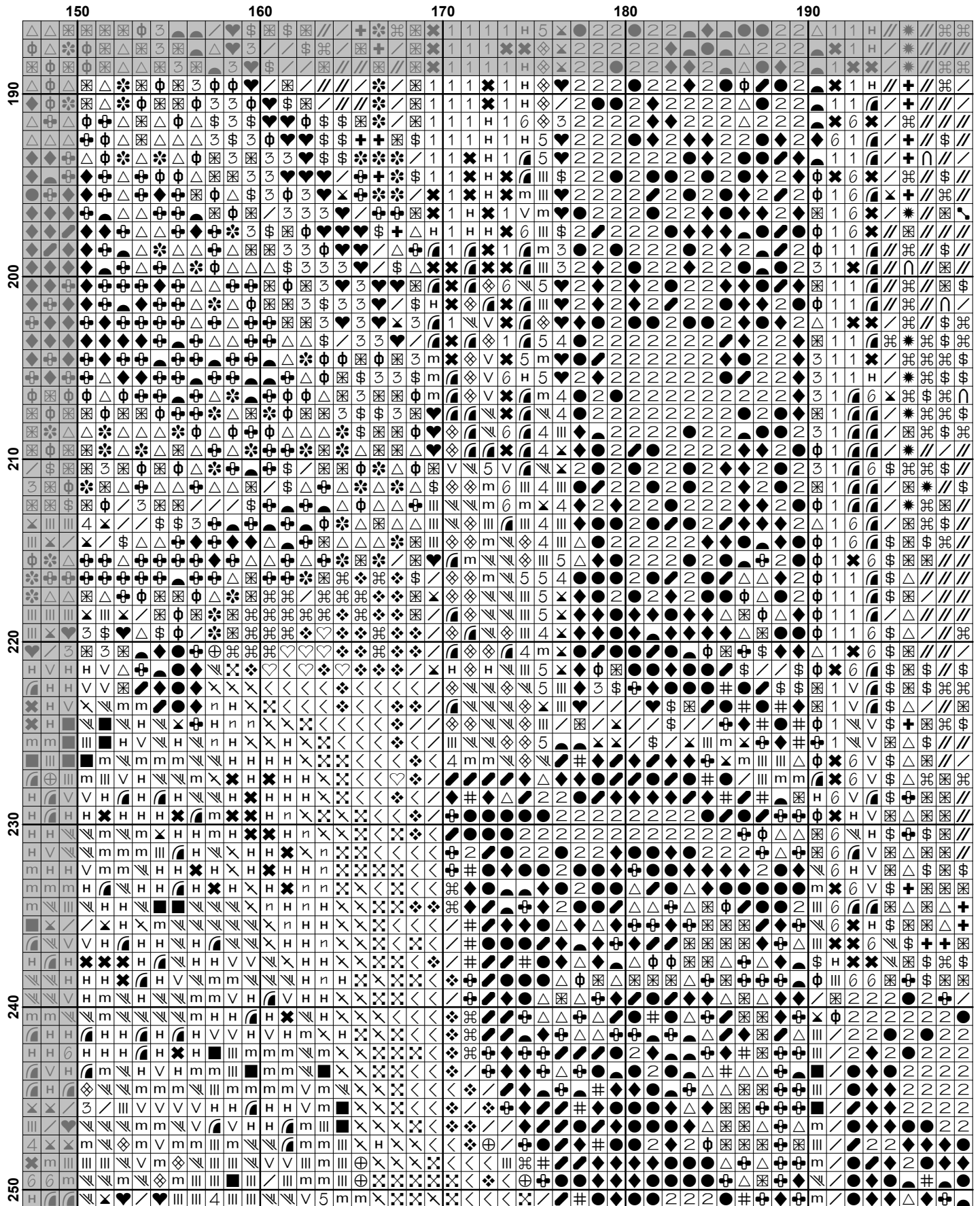


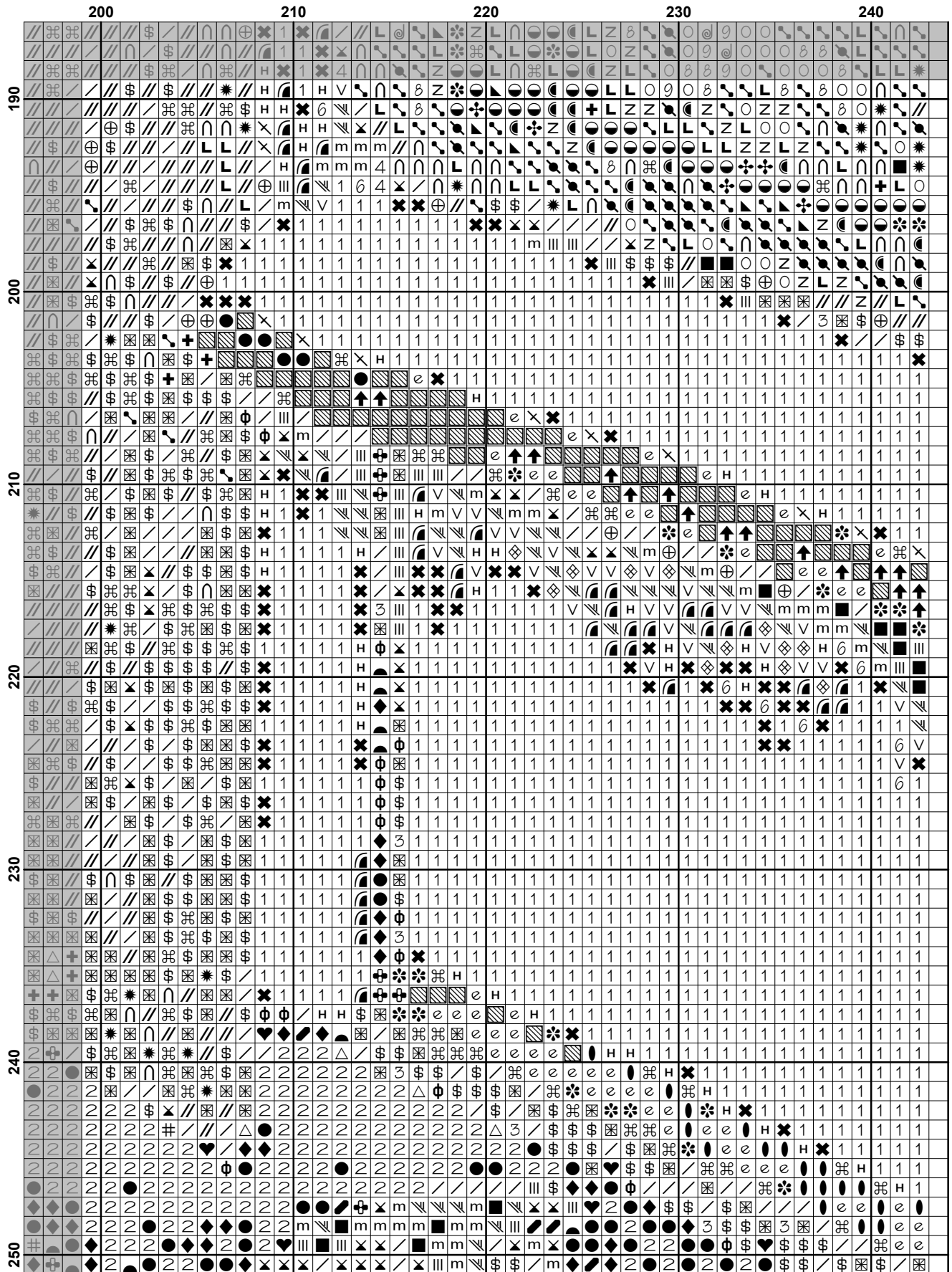


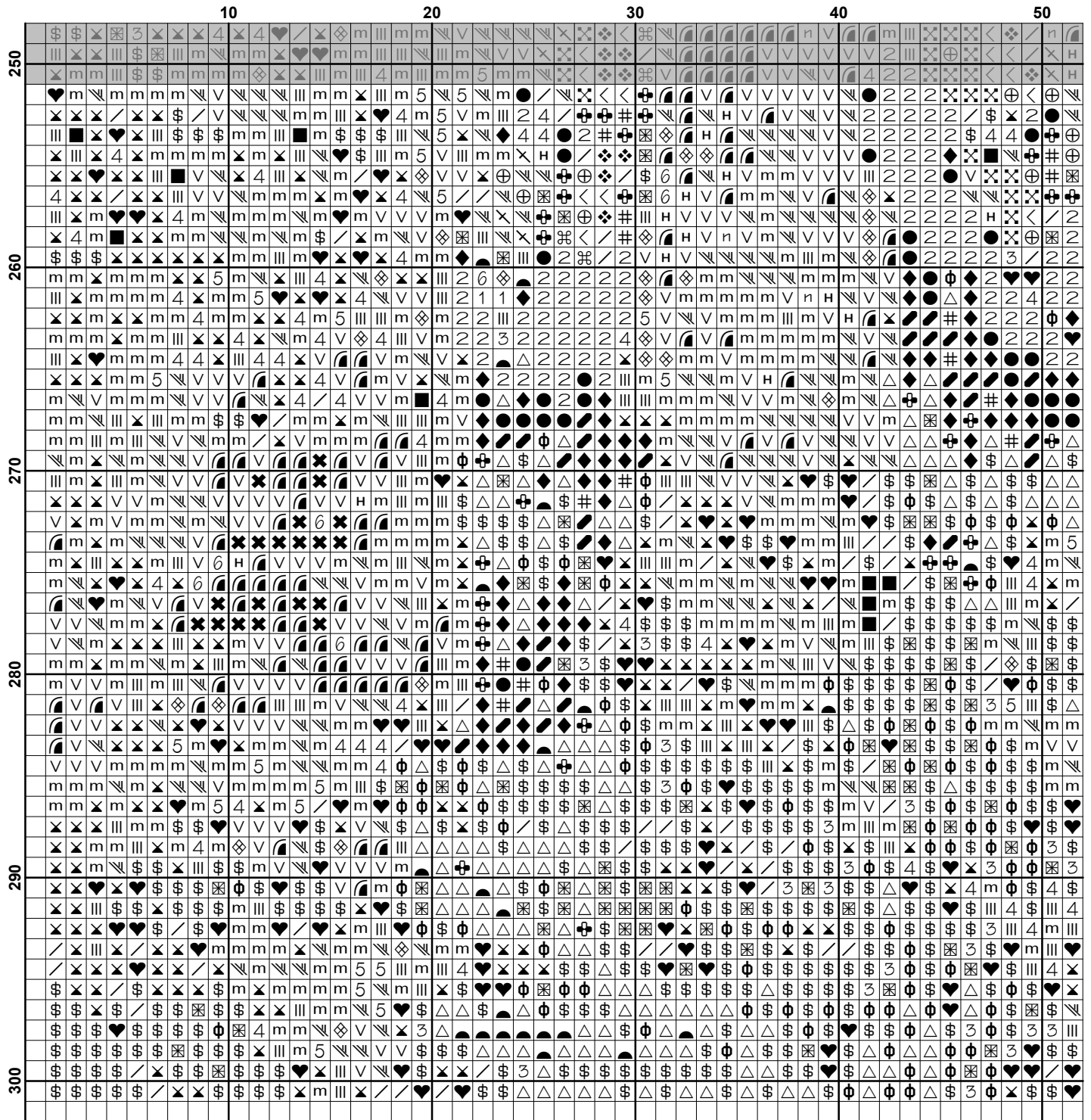


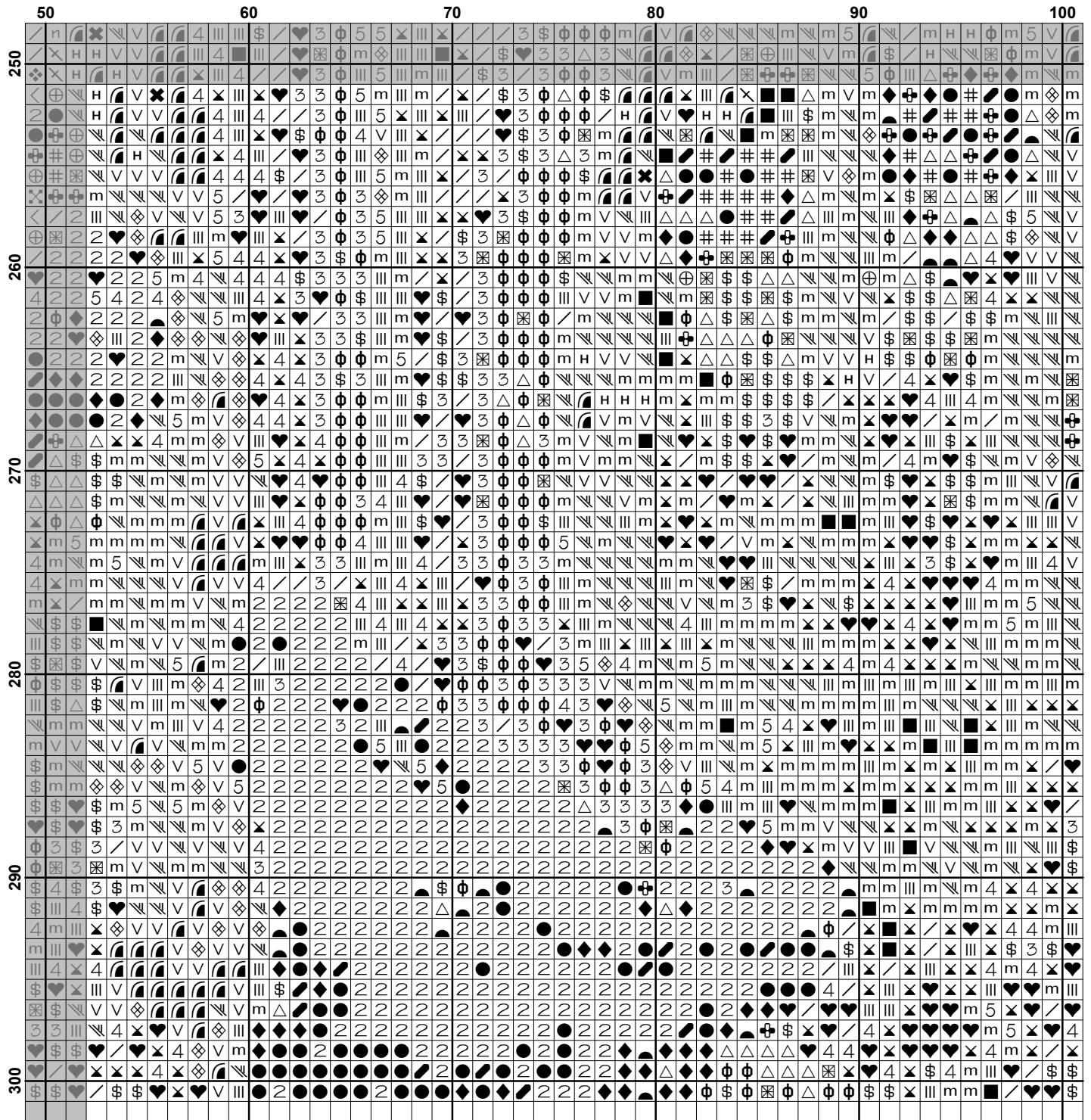


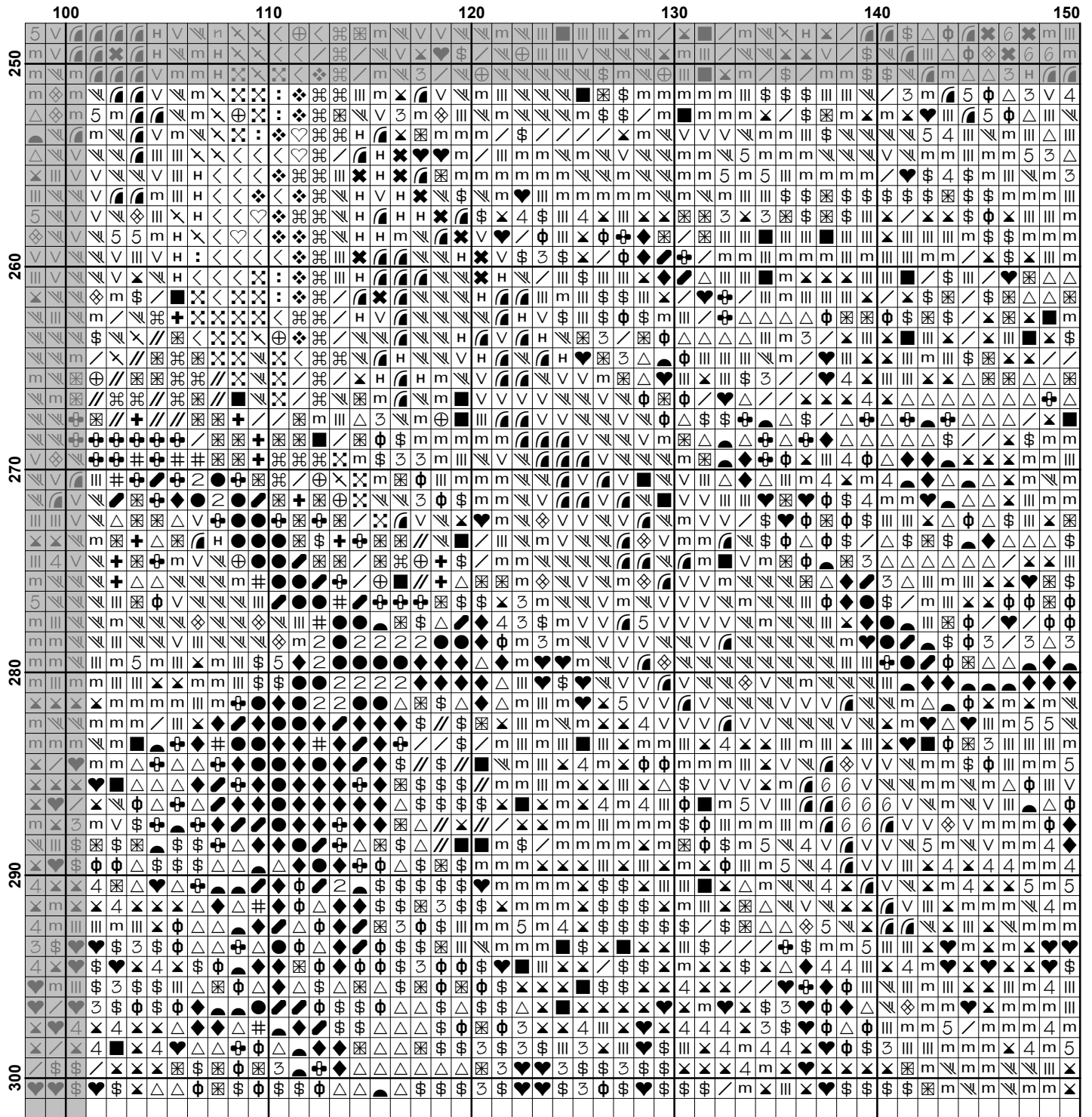


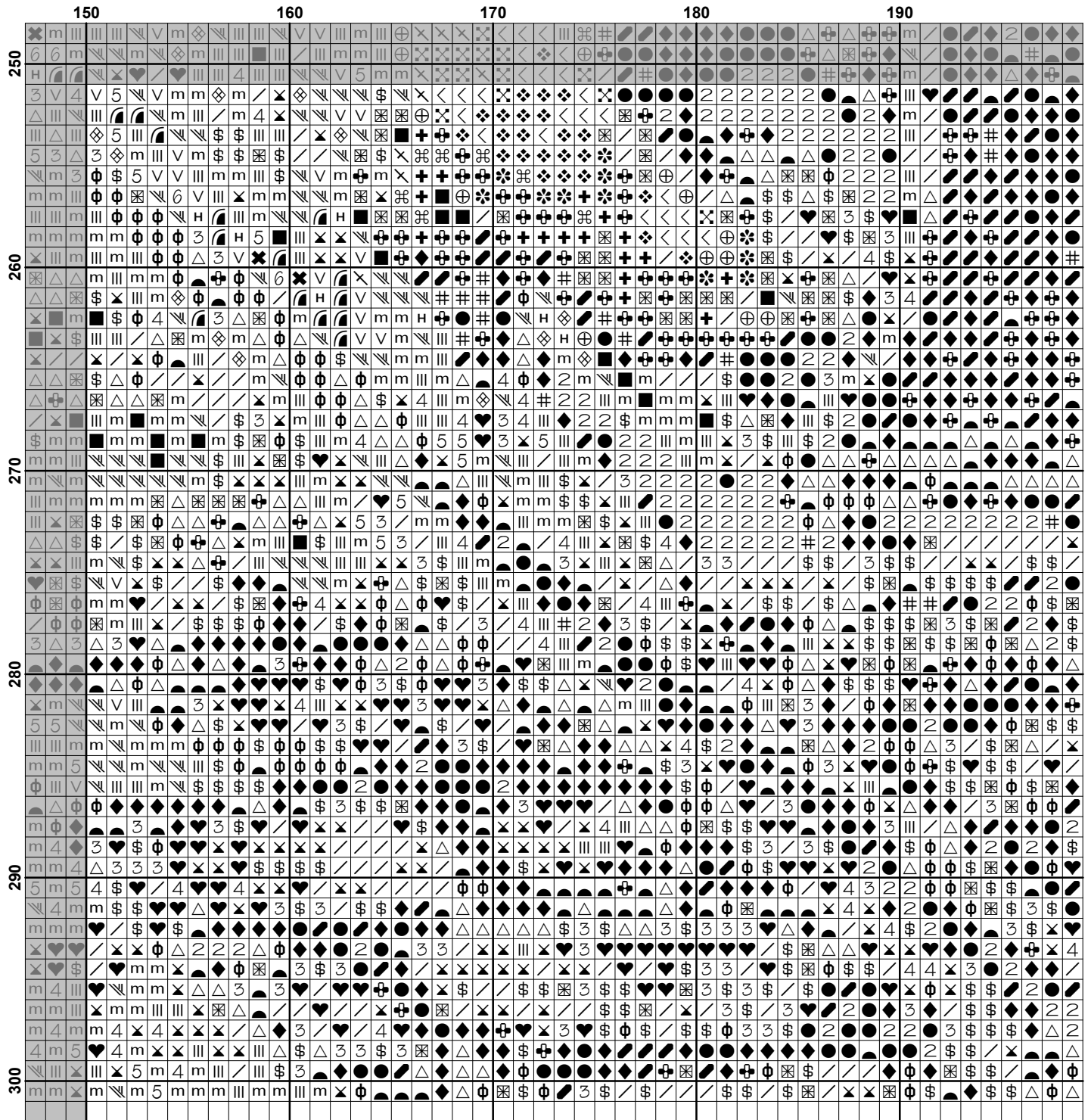


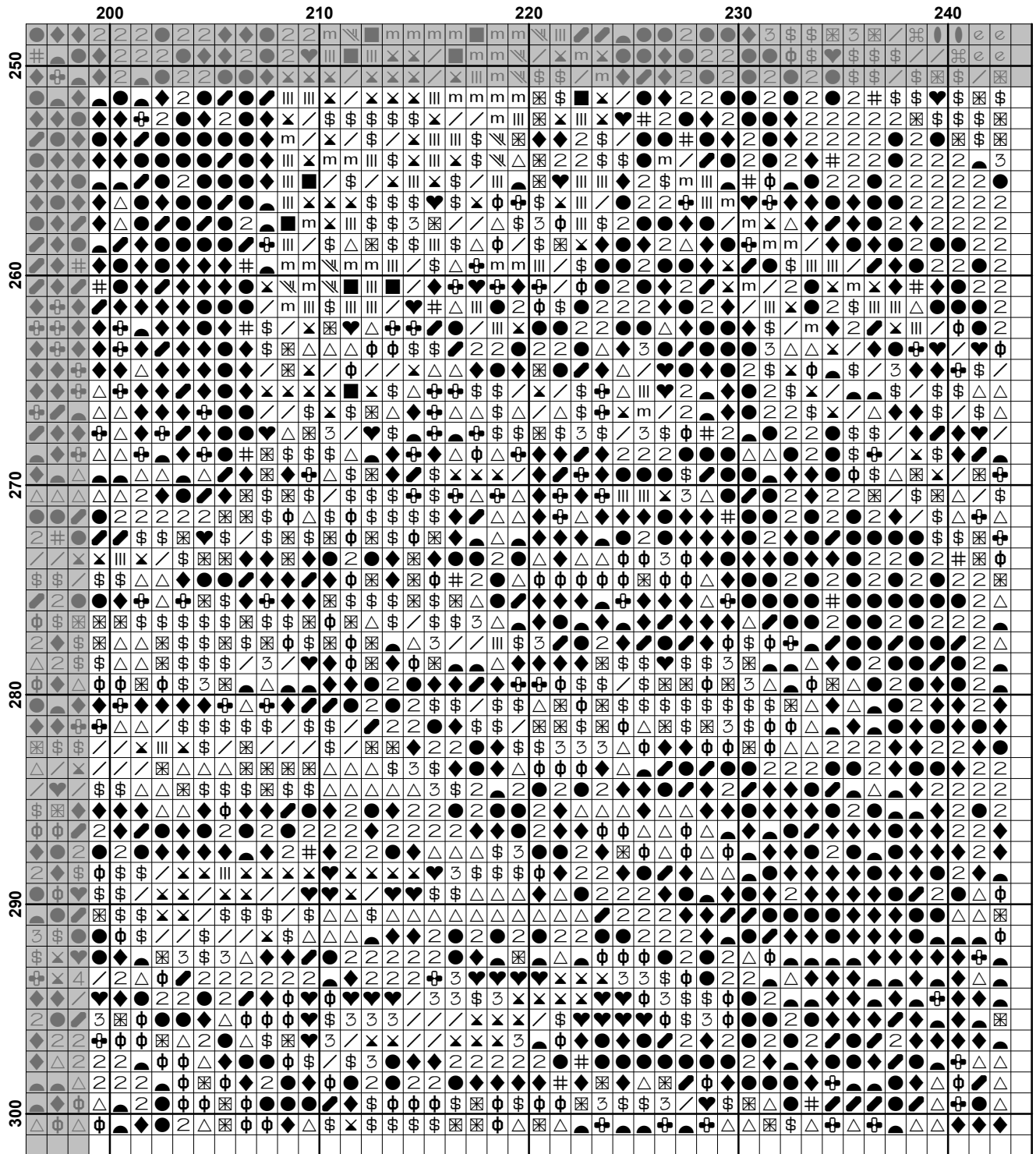

































Pattern Name: At the Tram Stop
Designed By: Artwork by Paul Gustave Fischer
Company: Artecy Cross Stitch
Copyright: Copyright Artecy Cross Stitch. All rights Reserved.
Fabric: Aida 14, White
 242w X 300h Stitches
Size(s): 14 Count, 17-1/4w X 21-3/8h in
 16 Count, 15-1/8w X 18-3/4h in
 18 Count, 13-3/8w X 16-5/8h in

Floss Used for Full Stitches:

Symbol	Strands	Type	Number	Color
	2	DMC	169	Pewter-LT
	2	DMC	221	Shell Pink-VY DK
	2	DMC	224	Shell Pink-VY LT
	2	DMC	225	Shell Pink-UL VY LT
	2	DMC	301	Mahogany-MD
	2	DMC	310	Black
	2	DMC	317	Pewter Gray
	2	DMC	318	Steel Gray-LT
	2	DMC	319	Pistachio Green-VY DK
	2	DMC	370	Mustard-MD
	2	DMC	413	Pewter Gray-DK
	2	DMC	414	Steel Gray-DK
	2	DMC	415	Pearl Gray
	2	DMC	434	Brown-LT
	2	DMC	436	Tan
	2	DMC	453	Shell Gray-LT
	2	DMC	498	Christmas Red-DK
	2	DMC	500	Blue Green-VY DK
	2	DMC	535	Ash Gray-VY LT
	2	DMC	612	Drab Brown-LT
	2	DMC	646	Beaver Gray-DK
	2	DMC	647	Beaver Gray-MD
	2	DMC	648	Beaver Gray-LT
	2	DMC	729	Old Gold-MD
	2	DMC	738	Tan-VY LT
	2	DMC	758	Terra Cotta-VY LT
	2	DMC	762	Pearl Gray-VY LT
	2	DMC	775	Baby Blue-VY LT
	2	DMC	779	Cocoa-DK
	2	DMC	783	Topaz-MD
	2	DMC	814	Garnet-DK
	2	DMC	829	Golden Olive-VY DK
	2	DMC	832	Golden Olive
	2	DMC	833	Golden Olive-LT
	2	DMC	834	Golden Olive-VY LT
	2	DMC	938	Coffee Brown-UL DK
	2	DMC	950	Desert Sand-LT
	2	DMC	951	Tawny-LT
	2	DMC	3012	Khaki Green-MD
	2	DMC	3024	Brown Gray-VY LT
	2	DMC	3031	Mocha Brown-VY DK
	2	DMC	3042	Antique Violet-LT
	2	DMC	3045	Yellow Beige-DK
	2	DMC	3064	Desert Sand
	2	DMC	3072	Beaver Gray-VY LT
	2	DMC	3363	Pine Green-MD

Symbol	Strands	Type	Number	Color
	●	2	DMC 3371	Black Brown
	◐	2	DMC 3721	Shell Pink-DK
	◊	2	DMC 3743	Antique Violet-VY LT
	=	2	DMC 3747	Blue Violet-VY LT
	✕	2	DMC 3770	Tawny-VY LT
	⌘	2	DMC 3772	Desert Sand-VY DK
	◀	2	DMC 3776	Mahogany-LT
	♡	2	DMC 3778	Terra Cotta-LT
	■	2	DMC 3782	Mocha Brown-LT
	◆	2	DMC 3799	Pewter Gray-VY DK
	9	2	DMC 3827	Golden Brown-Pale
	☾	2	DMC 3829	Old Gold-VY DK
	7	2	DMC 3841	Baby Blue-Pale
	◻	2	DMC 3857	Rosewood-DK
	✿	2	DMC 3858	Rosewood-MD
	✦	2	DMC 3859	Rosewood-LT
	⊠	2	DMC 3860	Cocoa
	/	2	DMC 3861	Cocoa-LT
	+	2	DMC 3862	Mocha Beige-DK
	⊕	2	DMC 3864	Mocha Beige-LT
	1	2	DMC 3865	Winter White

Notes:

The middle of this pattern can be found on page 13 and is 122 stitches across and 151 stitches down.

Pattern layout using page numbers in top left.

```

1  2  3  4  5
6  7  8  9 10
11 12 13 14 15
16 17 18 19 20
21 22 23 24 25
















```

Usage Summary

Strands Per Skein: 6

Skein Length: 313.0 in

Type	Number	Full	Half	Quarter	Petite	Back(in)	Str(in)	Spec(in)	French	Bead	Skein Est.
DMC	169	2789	0	0	0	0.0	0.0	0.0	0	0	2.000
DMC	221	328	0	0	0	0.0	0.0	0.0	0	0	1.000
DMC	224	282	0	0	0	0.0	0.0	0.0	0	0	1.000
DMC	225	1535	0	0	0	0.0	0.0	0.0	0	0	1.000
DMC	301	37	0	0	0	0.0	0.0	0.0	0	0	1.000
DMC	310	6511	0	0	0	0.0	0.0	0.0	0	0	3.000
DMC	317	3123	0	0	0	0.0	0.0	0.0	0	0	2.000
DMC	318	1808	0	0	0	0.0	0.0	0.0	0	0	1.000
DMC	319	159	0	0	0	0.0	0.0	0.0	0	0	1.000
DMC	370	279	0	0	0	0.0	0.0	0.0	0	0	1.000
DMC	413	2098	0	0	0	0.0	0.0	0.0	0	0	1.000
DMC	414	2494	0	0	0	0.0	0.0	0.0	0	0	2.000
DMC	415	444	0	0	0	0.0	0.0	0.0	0	0	1.000
DMC	434	105	0	0	0	0.0	0.0	0.0	0	0	1.000
DMC	436	124	0	0	0	0.0	0.0	0.0	0	0	1.000
DMC	453	2055	0	0	0	0.0	0.0	0.0	0	0	1.000
DMC	498	72	0	0	0	0.0	0.0	0.0	0	0	1.000
DMC	500	587	0	0	0	0.0	0.0	0.0	0	0	1.000
DMC	535	2019	0	0	0	0.0	0.0	0.0	0	0	1.000
DMC	612	677	0	0	0	0.0	0.0	0.0	0	0	1.000
DMC	646	2622	0	0	0	0.0	0.0	0.0	0	0	2.000
DMC	647	2412	0	0	0	0.0	0.0	0.0	0	0	2.000
DMC	648	2378	0	0	0	0.0	0.0	0.0	0	0	2.000
DMC	729	308	0	0	0	0.0	0.0	0.0	0	0	1.000
DMC	738	66	0	0	0	0.0	0.0	0.0	0	0	1.000
DMC	758	61	0	0	0	0.0	0.0	0.0	0	0	1.000
DMC	762	553	0	0	0	0.0	0.0	0.0	0	0	1.000
DMC	775	185	0	0	0	0.0	0.0	0.0	0	0	1.000
DMC	779	1399	0	0	0	0.0	0.0	0.0	0	0	1.000
DMC	783	153	0	0	0	0.0	0.0	0.0	0	0	1.000
DMC	814	543	0	0	0	0.0	0.0	0.0	0	0	1.000
DMC	829	64	0	0	0	0.0	0.0	0.0	0	0	1.000
DMC	832	241	0	0	0	0.0	0.0	0.0	0	0	1.000
DMC	833	826	0	0	0	0.0	0.0	0.0	0	0	1.000
DMC	834	281	0	0	0	0.0	0.0	0.0	0	0	1.000
DMC	938	384	0	0	0	0.0	0.0	0.0	0	0	1.000
DMC	950	397	0	0	0	0.0	0.0	0.0	0	0	1.000
DMC	951	278	0	0	0	0.0	0.0	0.0	0	0	1.000
DMC	3012	99	0	0	0	0.0	0.0	0.0	0	0	1.000
DMC	3024	1098	0	0	0	0.0	0.0	0.0	0	0	1.000
DMC	3031	759	0	0	0	0.0	0.0	0.0	0	0	1.000
DMC	3042	2578	0	0	0	0.0	0.0	0.0	0	0	2.000
DMC	3045	417	0	0	0	0.0	0.0	0.0	0	0	1.000
DMC	3064	377	0	0	0	0.0	0.0	0.0	0	0	1.000
DMC	3072	1420	0	0	0	0.0	0.0	0.0	0	0	1.000
DMC	3363	94	0	0	0	0.0	0.0	0.0	0	0	1.000
DMC	3371	3197	0	0	0	0.0	0.0	0.0	0	0	2.000
DMC	3721	41	0	0	0	0.0	0.0	0.0	0	0	1.000
DMC	3743	640	0	0	0	0.0	0.0	0.0	0	0	1.000
DMC	3747	306	0	0	0	0.0	0.0	0.0	0	0	1.000
DMC	3770	2954	0	0	0	0.0	0.0	0.0	0	0	2.000
DMC	3772	588	0	0	0	0.0	0.0	0.0	0	0	1.000

Type	Number	Full	Half	Quarter	Petite	Back(in)	Str(in)	Spec(in)	French	Bead	Skein	Est.
 DMC	3776	54	0	0	0	0.0	0.0	0.0	0	0	1.000	
 DMC	3778	60	0	0	0	0.0	0.0	0.0	0	0	1.000	
 DMC	3782	270	0	0	0	0.0	0.0	0.0	0	0	1.000	
 DMC	3799	3511	0	0	0	0.0	0.0	0.0	0	0	2.000	
 DMC	3827	76	0	0	0	0.0	0.0	0.0	0	0	1.000	
 DMC	3829	83	0	0	0	0.0	0.0	0.0	0	0	1.000	
 DMC	3841	319	0	0	0	0.0	0.0	0.0	0	0	1.000	
 DMC	3857	209	0	0	0	0.0	0.0	0.0	0	0	1.000	
 DMC	3858	567	0	0	0	0.0	0.0	0.0	0	0	1.000	
 DMC	3859	348	0	0	0	0.0	0.0	0.0	0	0	1.000	
 DMC	3860	2085	0	0	0	0.0	0.0	0.0	0	0	1.000	
 DMC	3861	2352	0	0	0	0.0	0.0	0.0	0	0	2.000	
 DMC	3862	229	0	0	0	0.0	0.0	0.0	0	0	1.000	
 DMC	3864	342	0	0	0	0.0	0.0	0.0	0	0	1.000	
 DMC	3865	6850	0	0	0	0.0	0.0	0.0	0	0	3.000	