

# Artecy

## CROSS STITCH

### Byodo-In Temple



\* Original image©Christian Joudrey - Unsplash  
Cross Stitch Design by Tereena Clarke.

Completed Size = 300w x 200h Stitches

14 Count, 21.5w x 14.5h inches (55cm x 37cm)

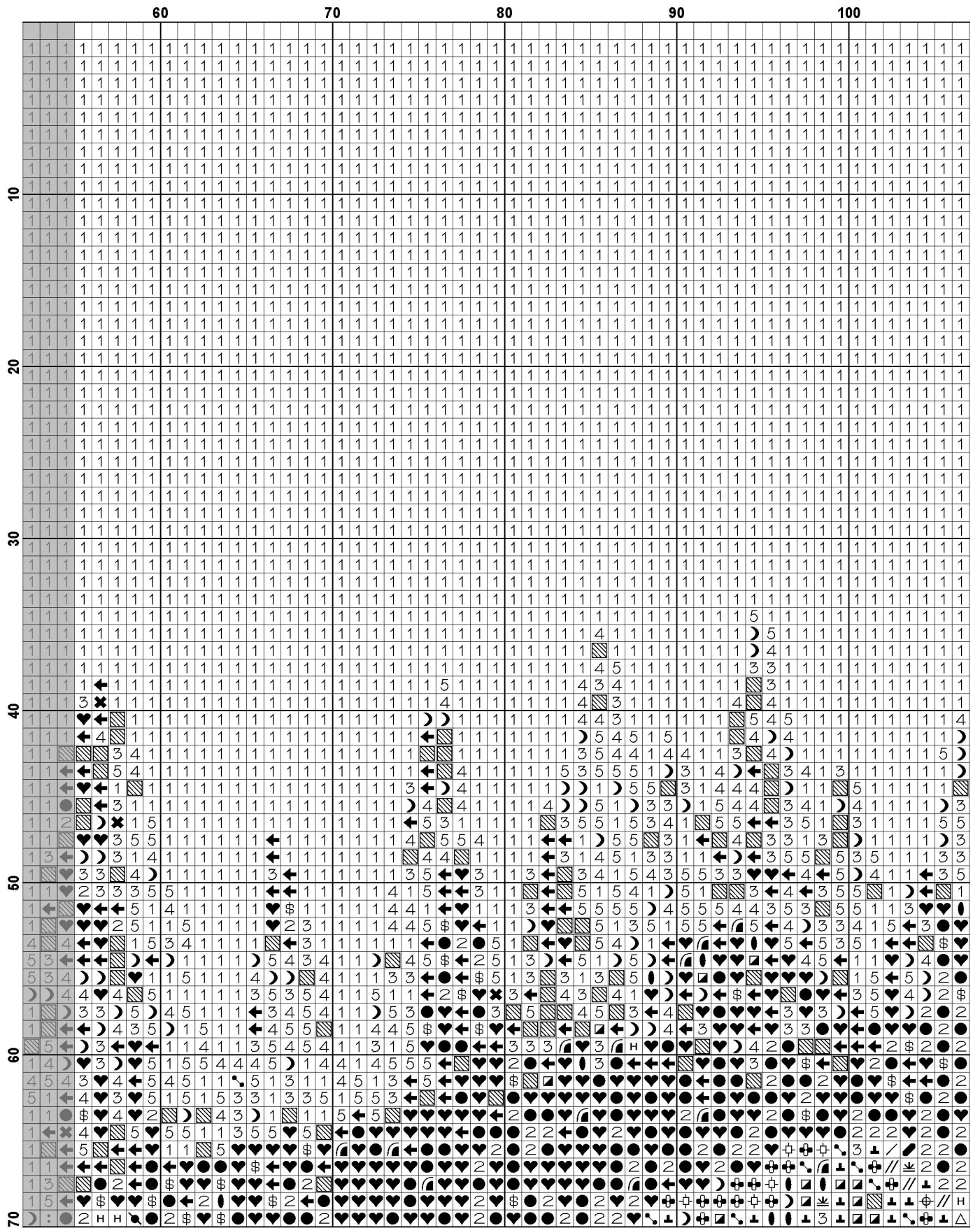
16 Count, 19w x 12.5h inches (48cm x 32cm)

18 Count, 17w x 11.5h inches (43cm x 29cm)

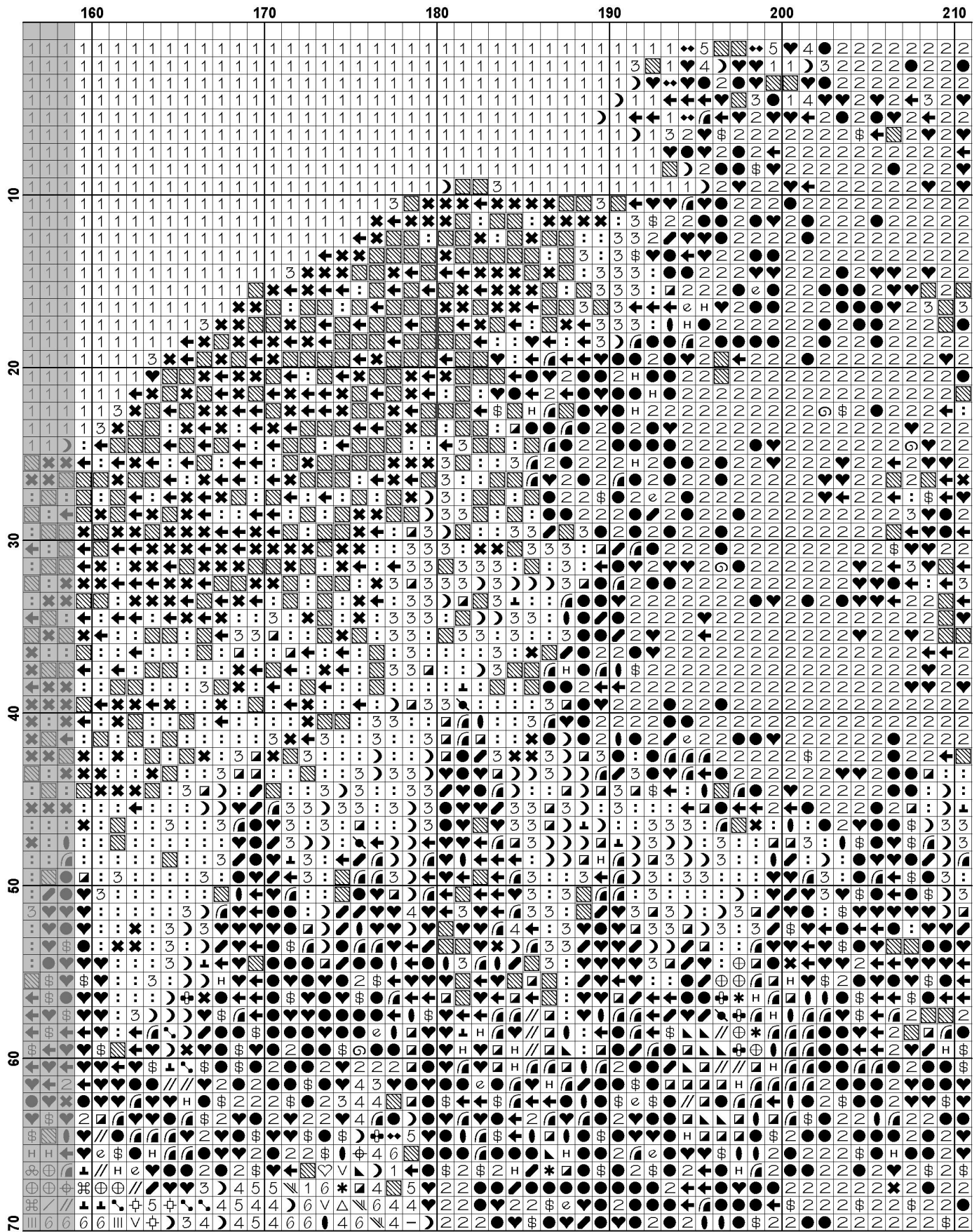
Uses 79 DMC cotton colours. Only full cross stitches are used in this pattern.

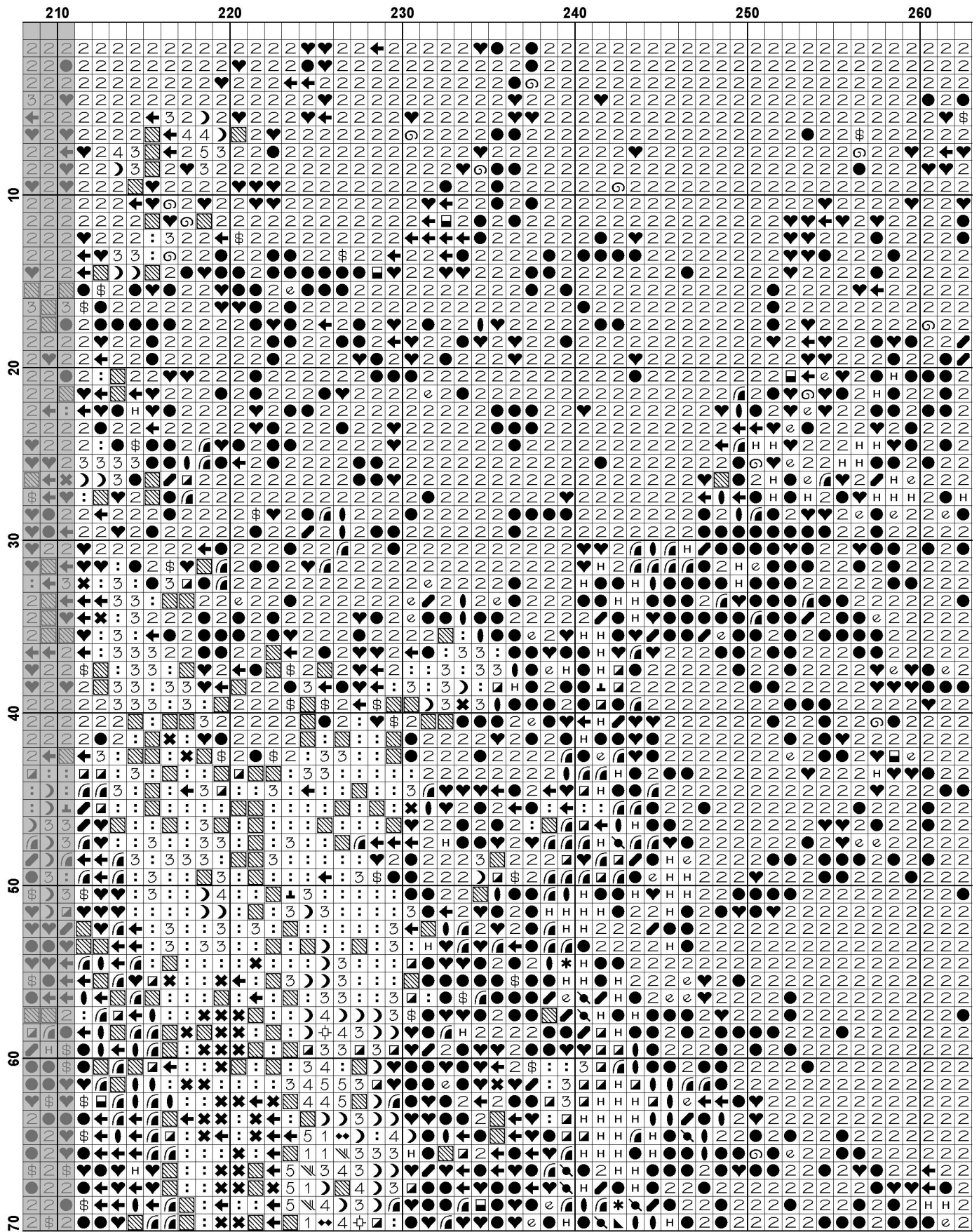




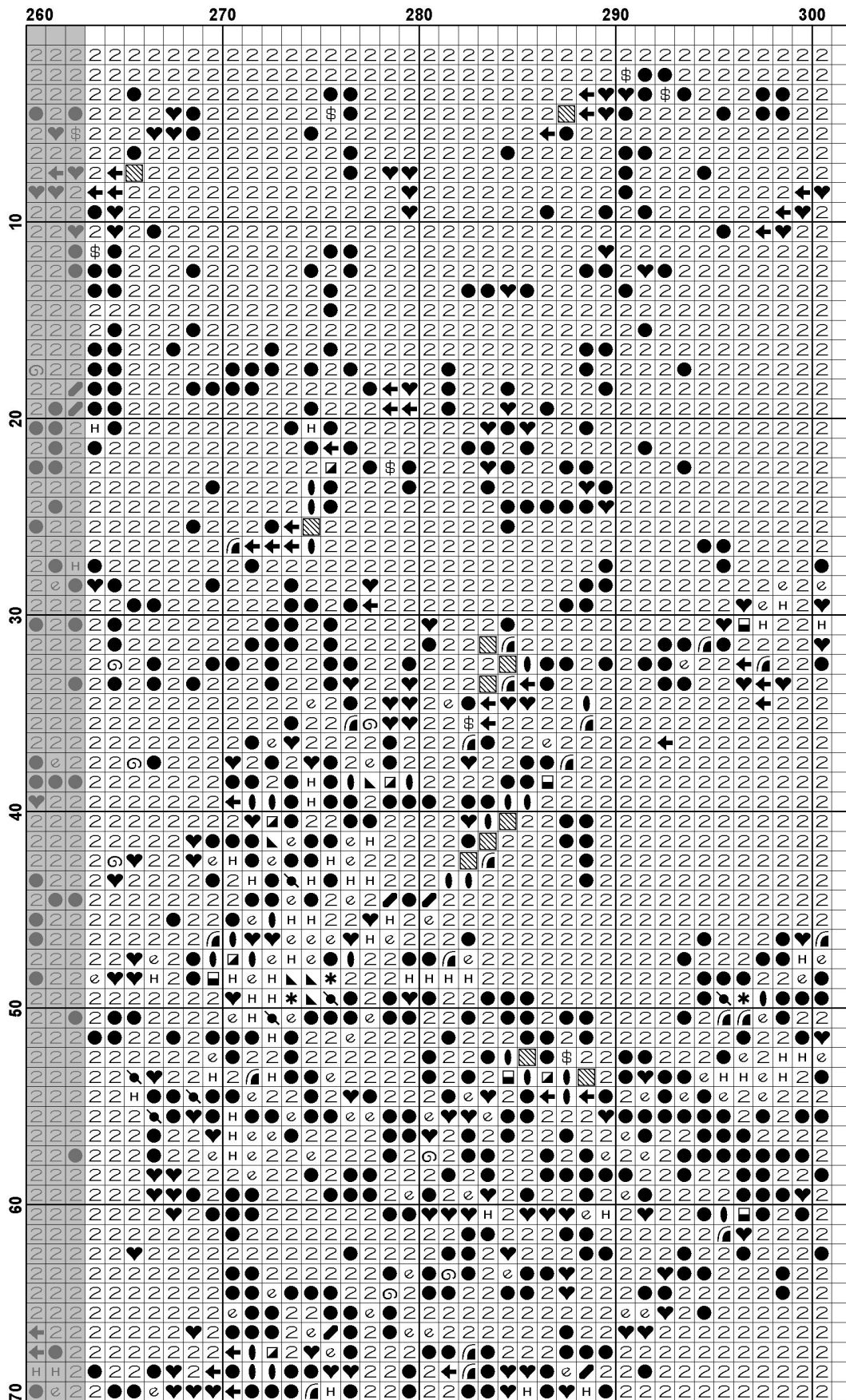


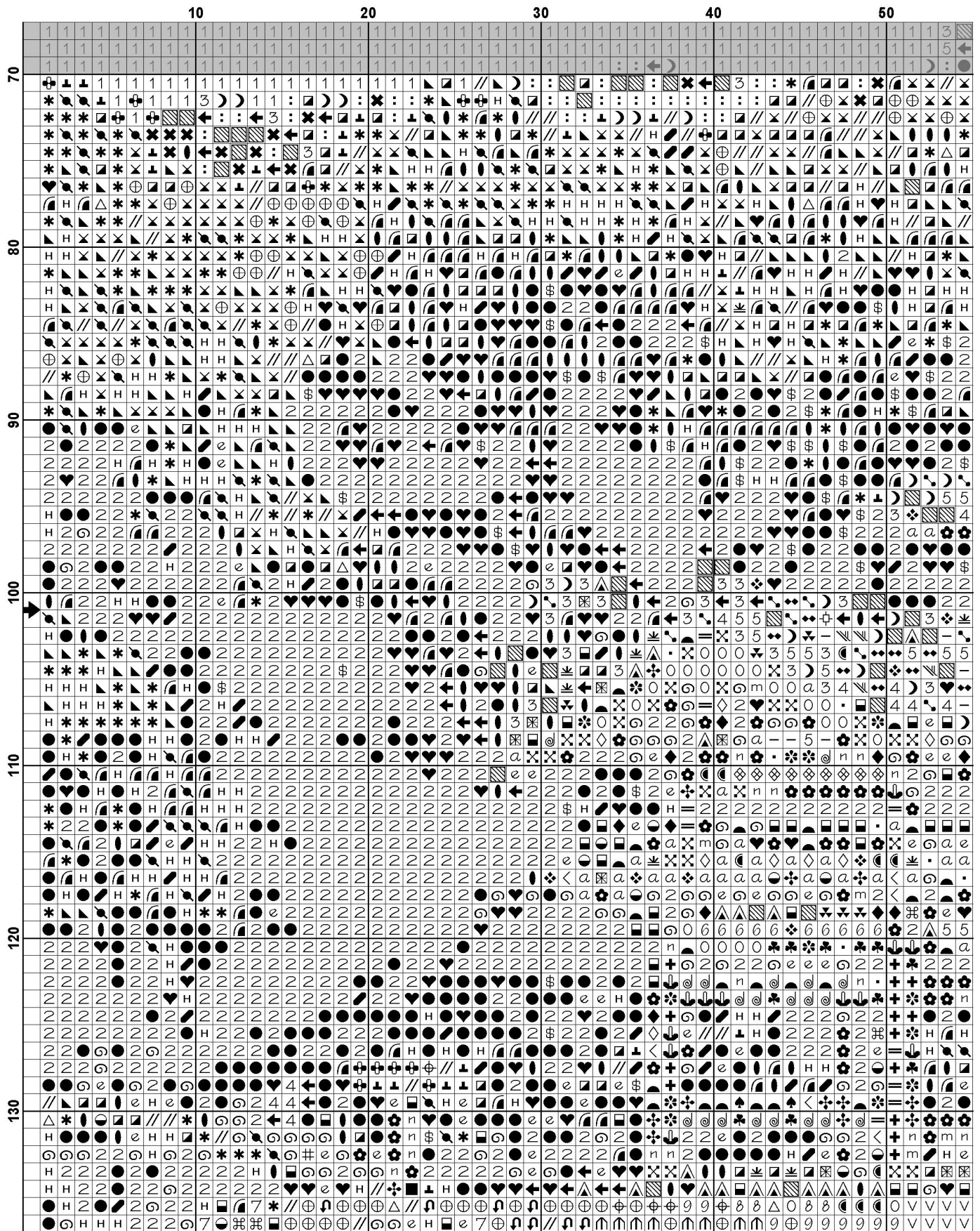


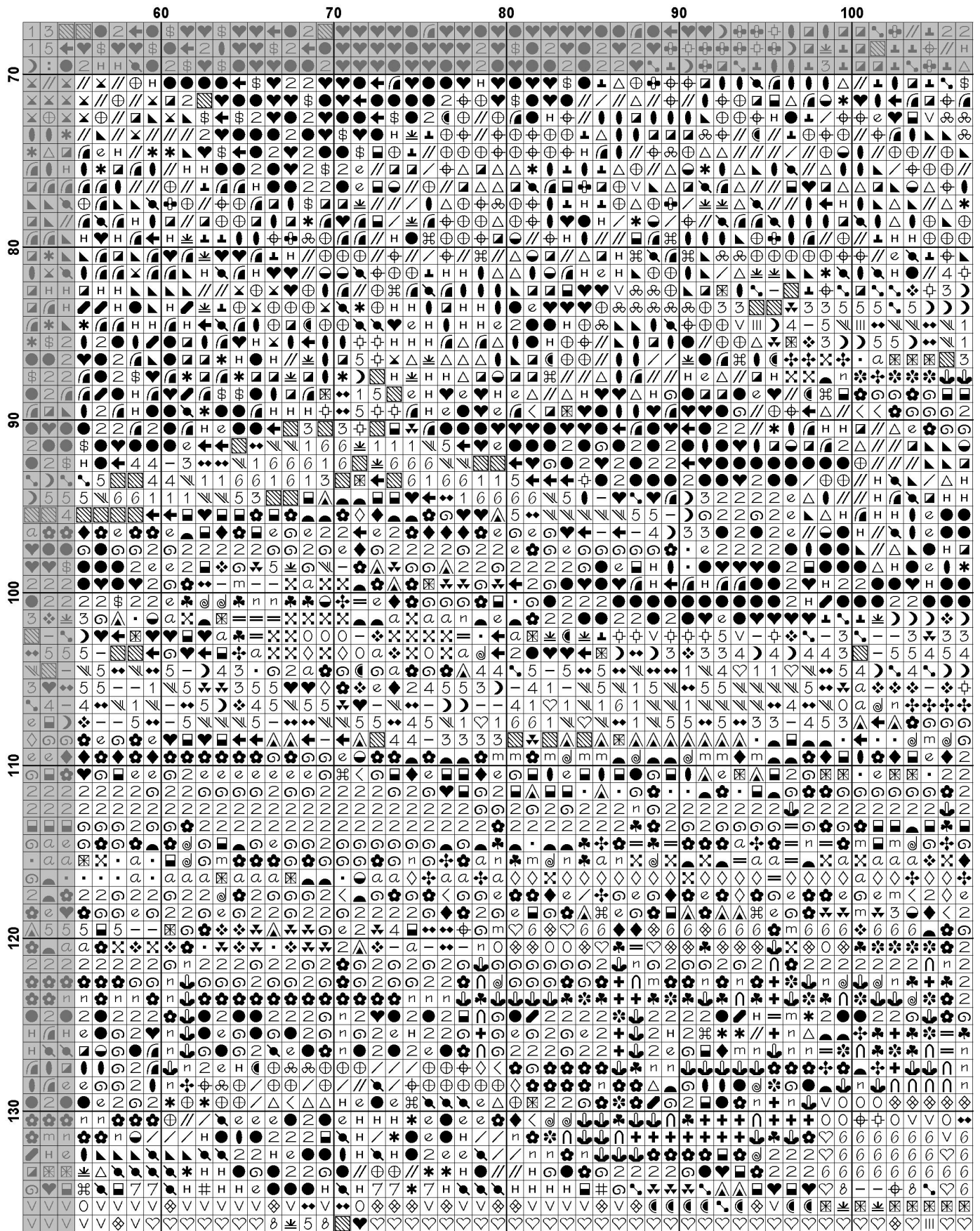




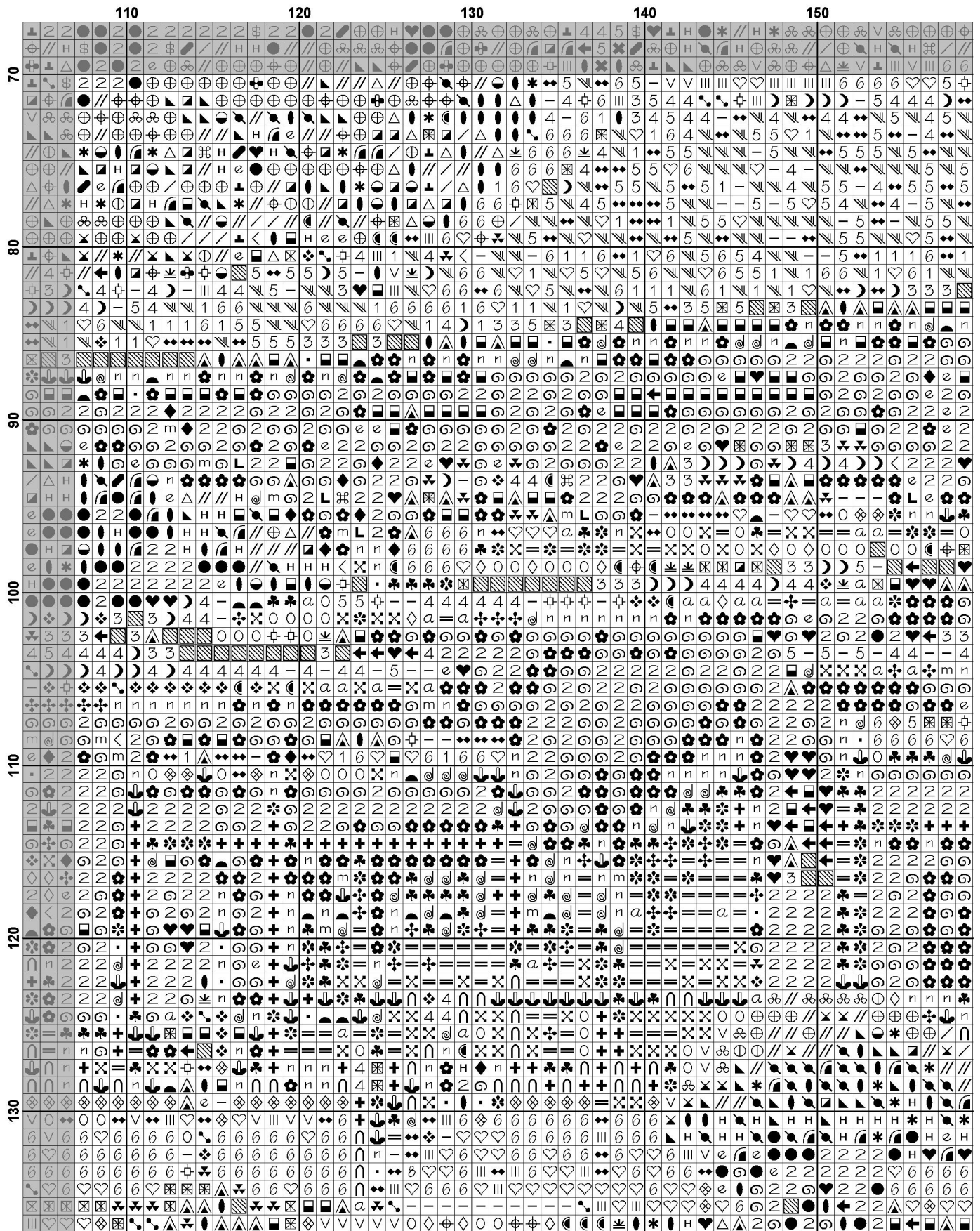




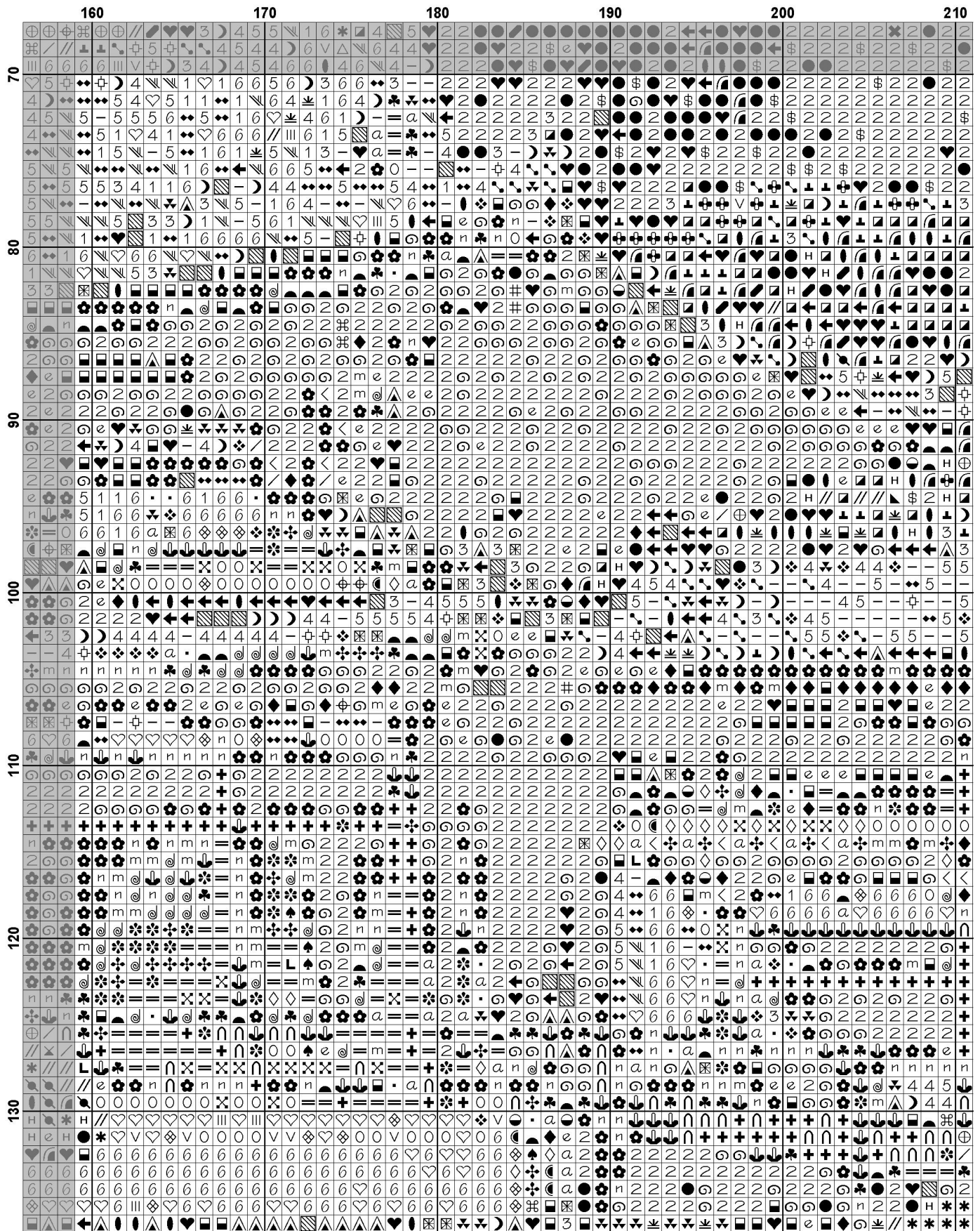


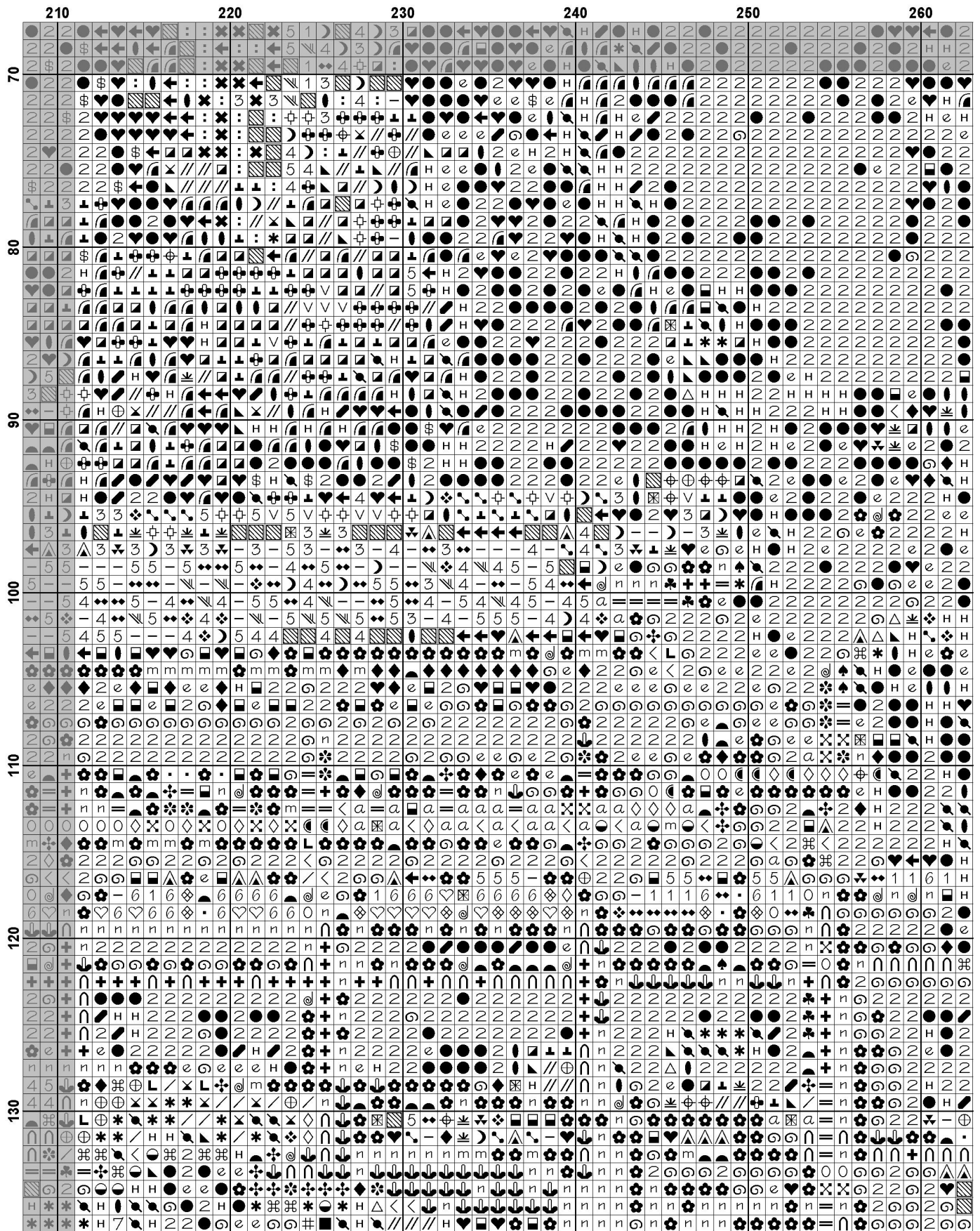


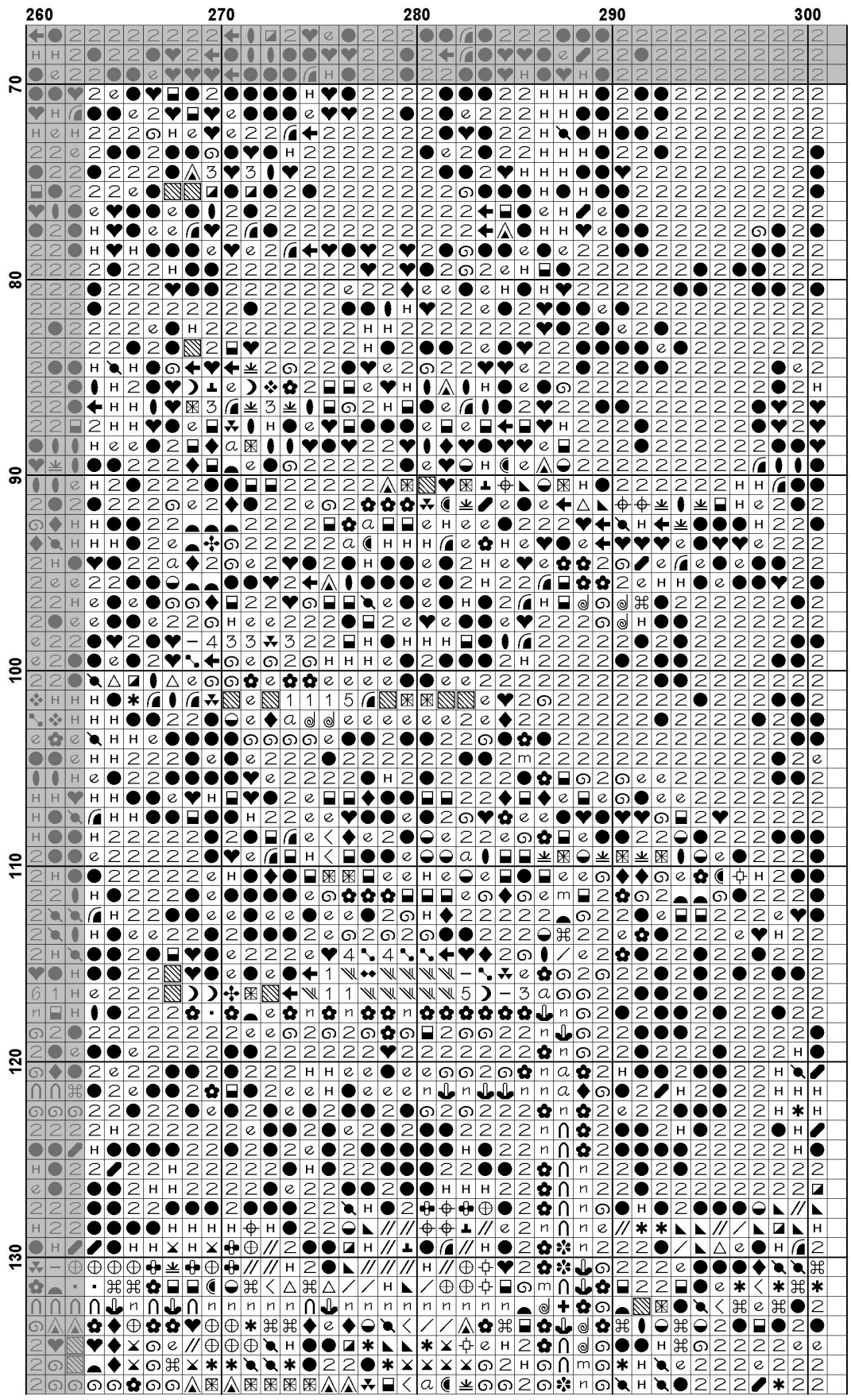




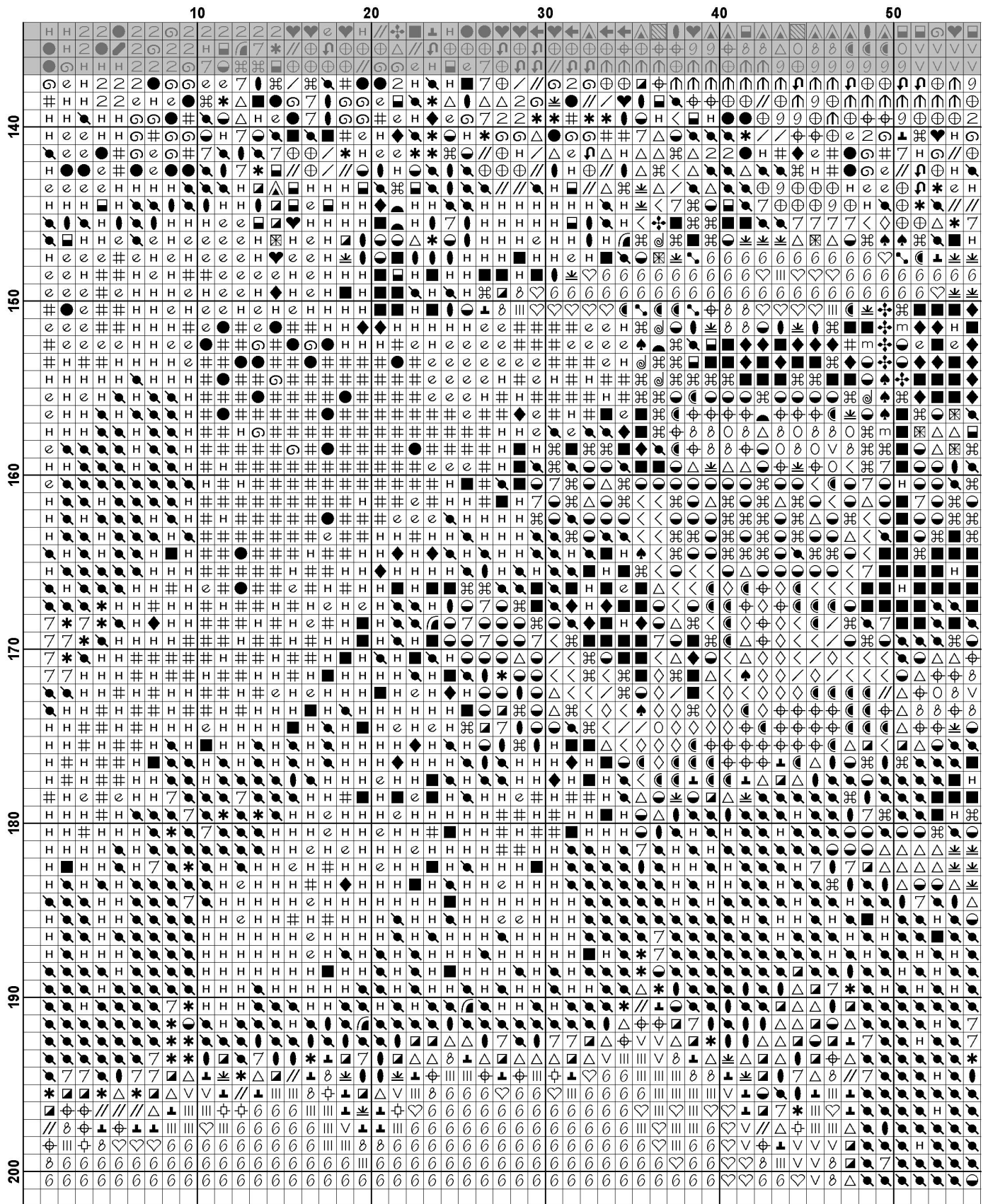




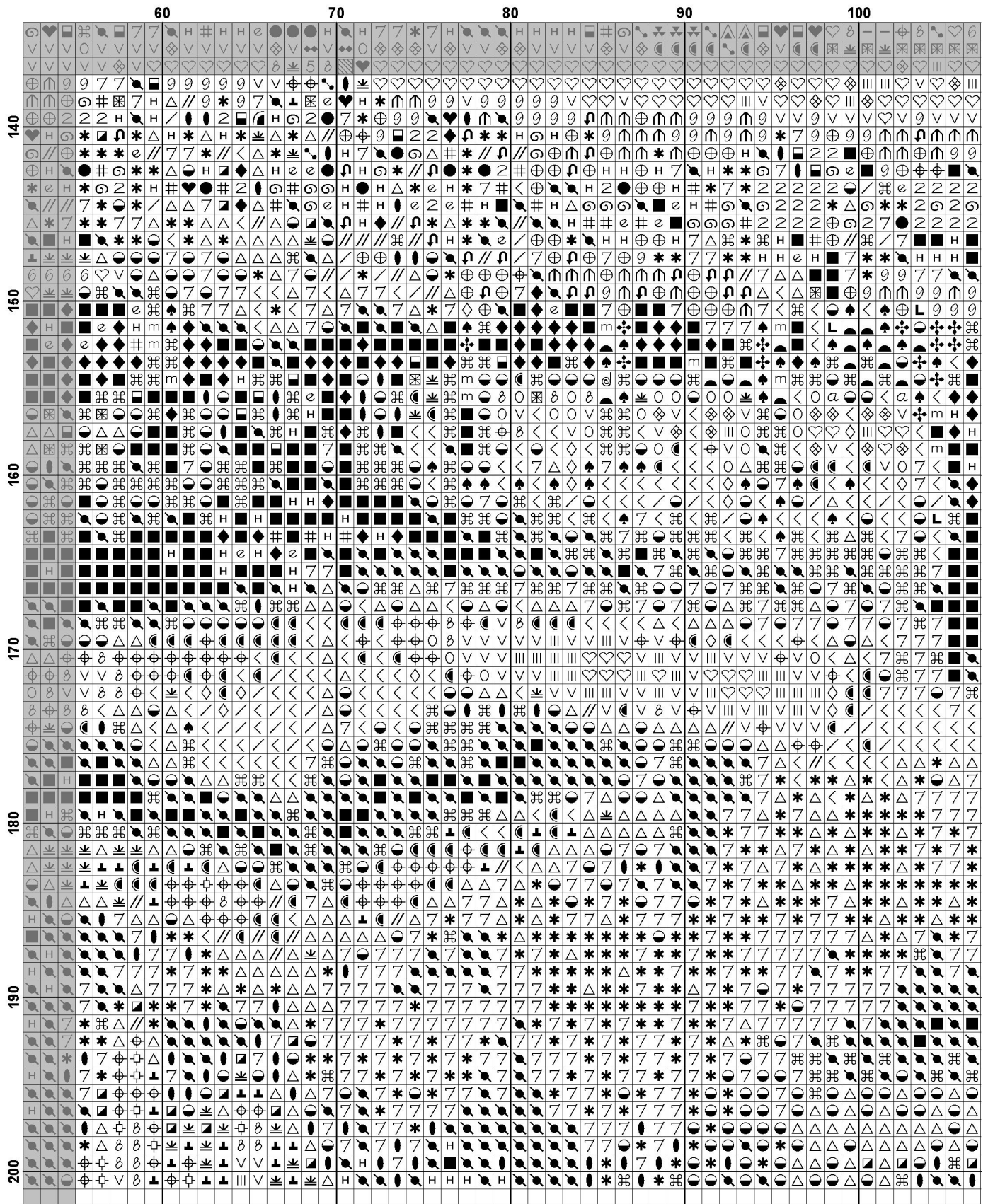


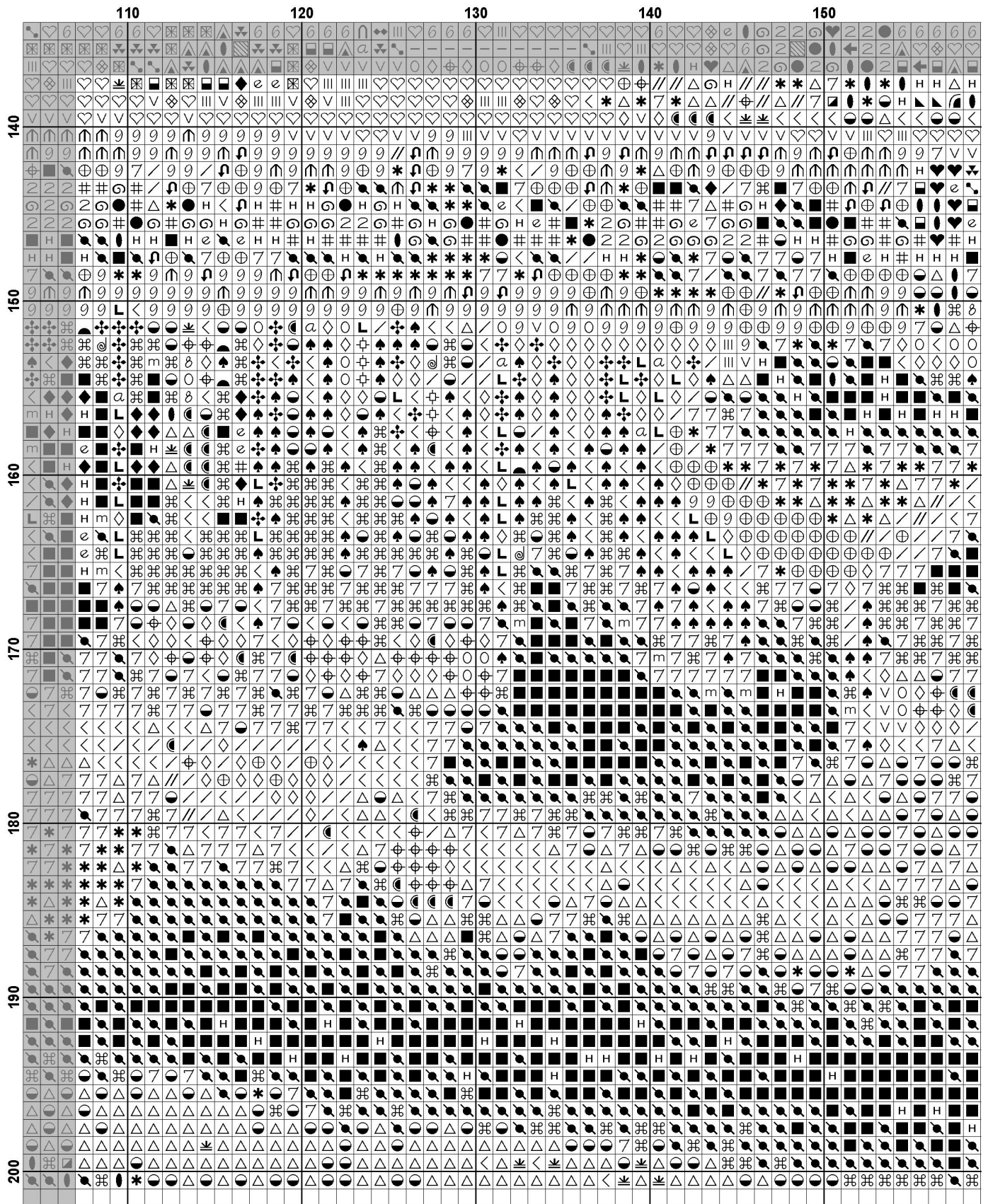


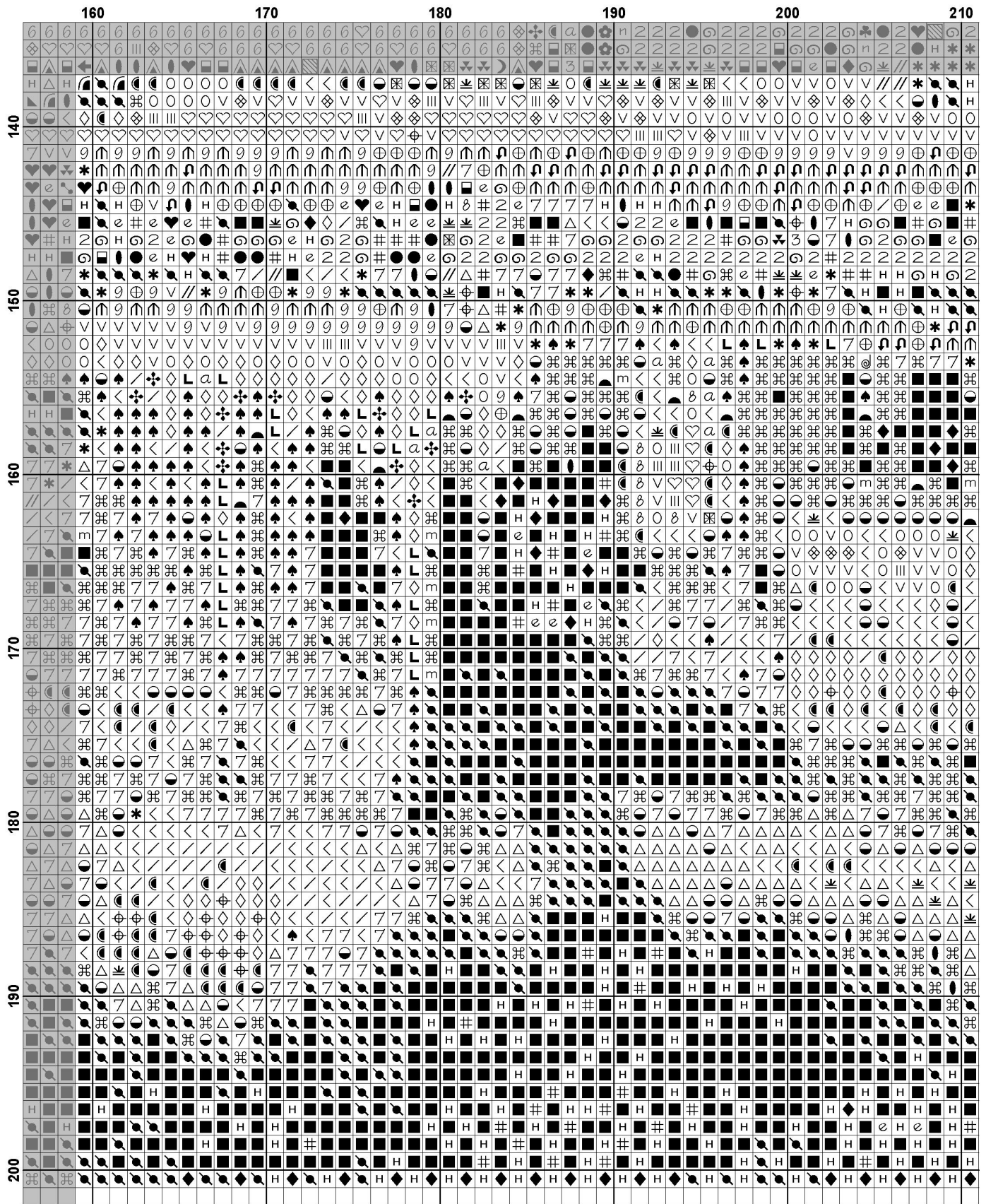




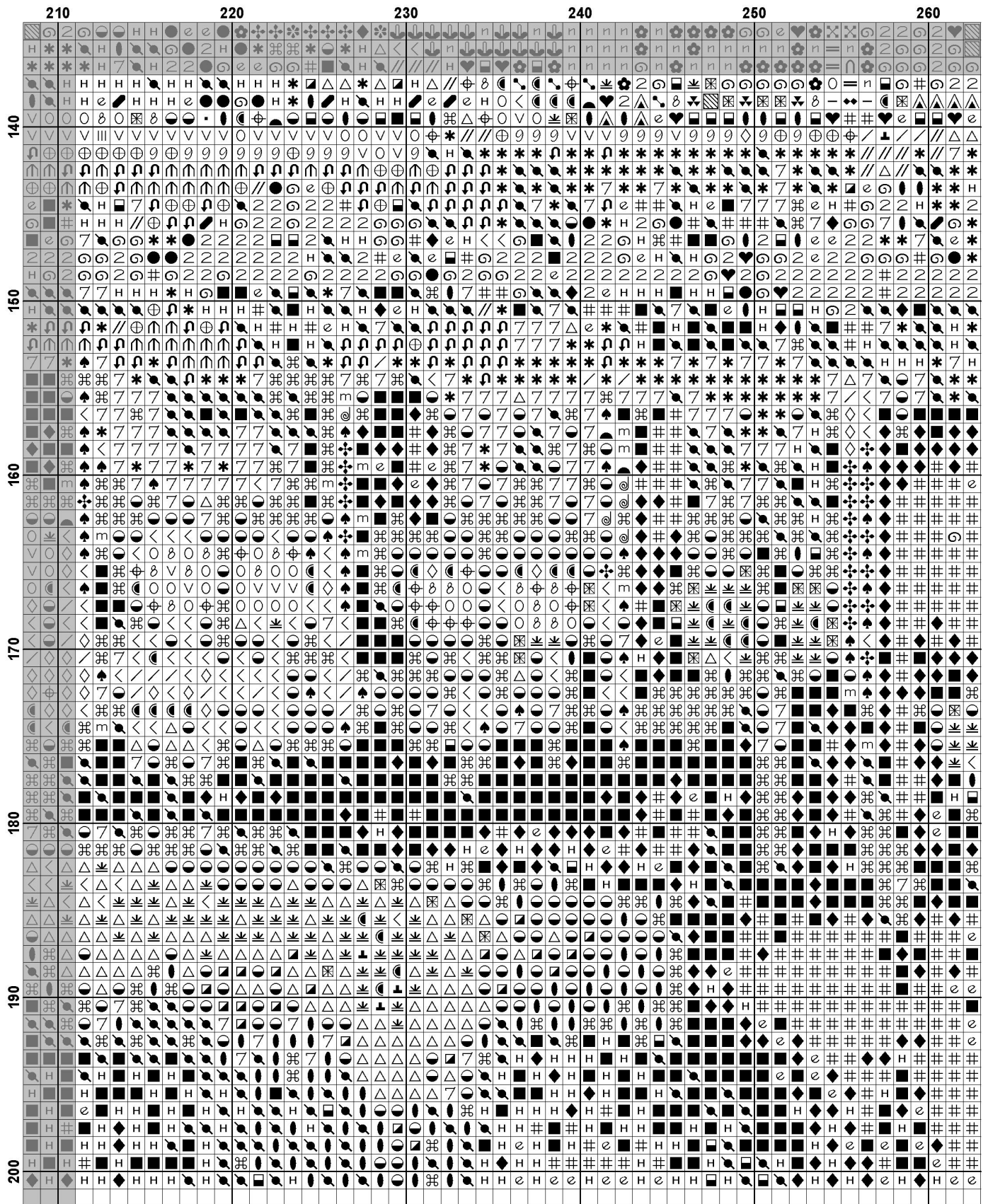




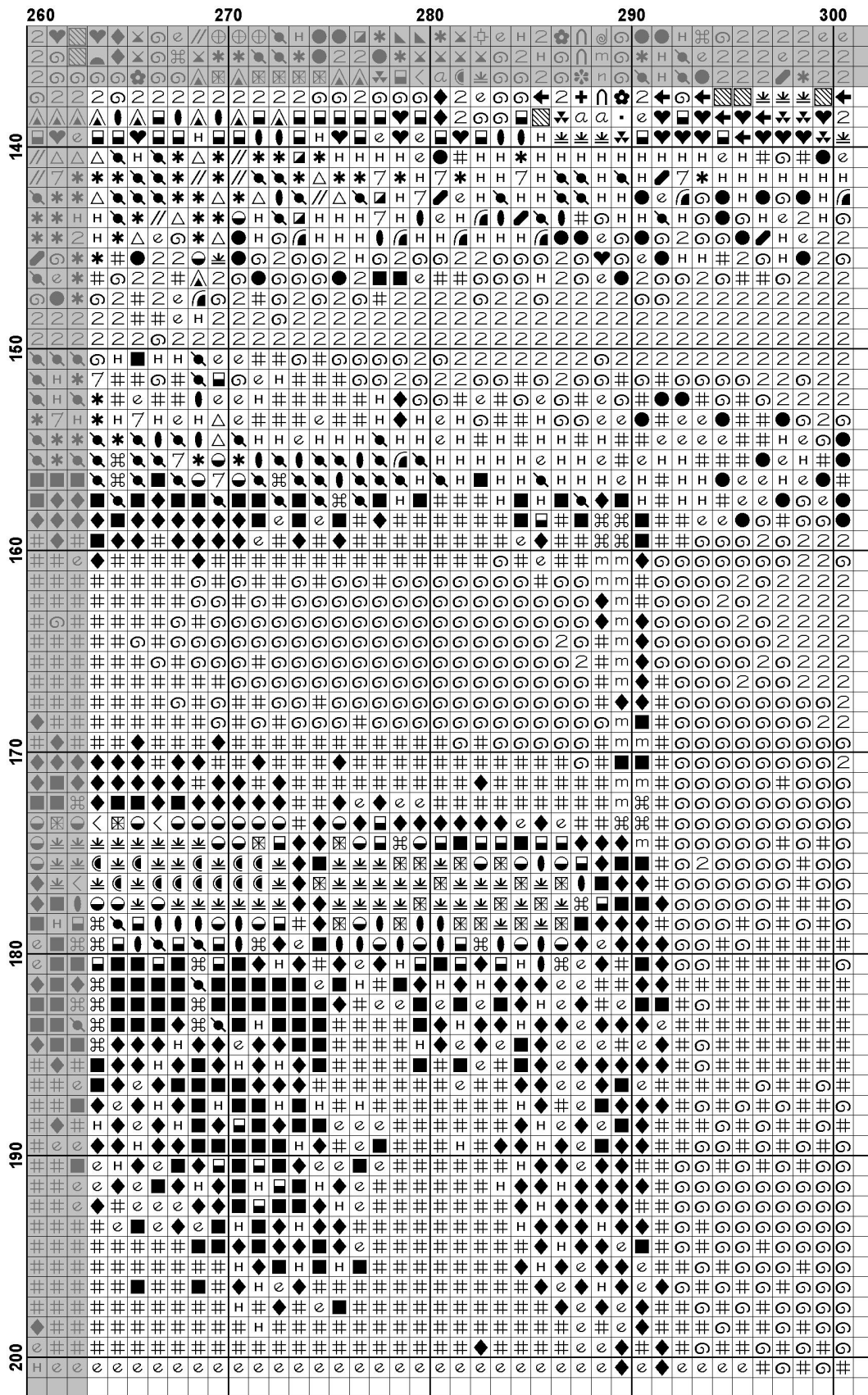














































**Pattern Name:** Byodo-In Temple  
**Designed By:** Image by Christian Joudrey - Unsplash  
**Company:** Artecy Cross Stitch  
**Copyright:** Copyright Artecy Cross Stitch. All rights Reserved.  
**Fabric:** Aida 14, White  
 300w X 200h Stitches  
**Size(s):** 14 Count, 21-3/8w X 14-1/4h in  
 16 Count, 18-3/4w X 12-1/2h in  
 18 Count, 16-5/8w X 11h in

**Floss Used for Full Stitches:**

Symbol	Strands	Type	Number	Color
	2	DMC	164	Forest Green-LT
	2	DMC	165	Moss Green-VY LT
	2	DMC	166	Moss Green-MD LT
	2	DMC	169	Pewter-LT
	2	DMC	307	Lemon
	2	DMC	310	Black
	2	DMC	315	Antique Mauve-VY DK
	2	DMC	317	Pewter Gray
	2	DMC	318	Steel Gray-LT
	2	DMC	326	Rose-VY DK
	2	DMC	347	Salmon-VY DK
	2	DMC	349	Coral-DK
	2	DMC	355	Terra Cotta-DK
	2	DMC	370	Mustard-MD
	2	DMC	372	Mustard-LT
	2	DMC	413	Pewter Gray-DK
	2	DMC	414	Steel Gray-DK
	2	DMC	415	Pearl Gray
	2	DMC	436	Tan
	2	DMC	470	Avocado Green-LT
	2	DMC	471	Avocado Green-VY LT
	2	DMC	498	Christmas Red-DK
	2	DMC	500	Blue Green-VY DK
	2	DMC	520	Fern Green-DK
	2	DMC	524	Fern Green-VY LT
	2	DMC	581	Moss Green
	2	DMC	612	Drab Brown-LT
	2	DMC	640	Beige Gray-VY DK
	2	DMC	647	Beaver Gray-MD
	2	DMC	677	Old Gold-VY LT
	2	DMC	726	Topaz-LT
	2	DMC	730	Olive Green-VY DK
	2	DMC	732	Olive Green
	2	DMC	758	Terra Cotta-VY LT
	2	DMC	775	Baby Blue-VY LT
	2	DMC	779	Cocoa-DK
	2	DMC	783	Topaz-MD
	2	DMC	801	Coffee Brown-DK
	2	DMC	814	Garnet-DK
	2	DMC	822	Beige Gray-LT
	2	DMC	829	Golden Olive-VY DK
	2	DMC	833	Golden Olive-LT
	2	DMC	869	Hazelnut Brown-VY DK
	2	DMC	895	Hunter Green-VY DK
	2	DMC	907	Parrot Green-LT

Symbol	Strands	Type	Number	Color
 m	2	DMC	918	Red Copper-DK
 X	2	DMC	930	Antique Blue-DK
 ●	2	DMC	934	Black Avocado Green
 H	2	DMC	936	Avocado Green-VY DK
 #	2	DMC	938	Coffee Brown-UL DK
 X	2	DMC	961	Dusty Rose-DK
 Δ	2	DMC	3012	Khaki Green-MD
 b	2	DMC	3023	Brown Gray-LT
 e	2	DMC	3031	Mocha Brown-VY DK
 ▼	2	DMC	3041	Antique Violet-MD
 -	2	DMC	3042	Antique Violet-LT
 □	2	DMC	3363	Pine Green-MD
 +	2	DMC	3364	Pine Green
 ⊙	2	DMC	3371	Black Brown
	2	DMC	3705	Melon-DK
 ◇	2	DMC	3713	Salmon-VY LT
 a	2	DMC	3722	Shell Pink-MD
 ▲	2	DMC	3740	Antique Violet-DK
 ◆	2	DMC	3743	Antique Violet-VY LT
 /	2	DMC	3747	Blue Violet-VY LT
 :	2	DMC	3768	Gray Green-DK
 ♥	2	DMC	3770	Tawny-VY LT
 ●	2	DMC	3787	Brown Gray-DK
 ♥	2	DMC	3799	Pewter Gray-VY DK
 +	2	DMC	3801	Christmas Red-LT
 ⊕	2	DMC	3819	Moss Green-LT
 ♠	2	DMC	3826	Golden Brown
 ⊕	2	DMC	3830	Terra Cotta-MD
 ♣	2	DMC	3831	Raspberry-DK
 ◐	2	DMC	3858	Rosewood-MD
 ⊠	2	DMC	3860	Cocoa
 ◆	2	DMC	3861	Cocoa-LT
 ⊙	2	DMC	3862	Mocha Beige-DK
 6	2	DMC	B5200	Snow White

**Notes:**

The middle of this pattern can be found on page 9 and is 151 stitches across and 101 stitches down.

Pattern layout using page numbers in top left.

```

1 2 3 4 5 6
7 8 9 10 11 12
13 14 15 16 17 18

```



**Usage Summary**

**Strands Per Skein:** 6

**Skein Length:** 313.0 in

Type	Number	Full	Half	Quarter	Petite	Back(in)	Str(in)	Spec(in)	French	Bead	Skein Est.
DMC 164	164	121	0	0	0	0.0	0.0	0.0	0	0	1.000
DMC 165	165	271	0	0	0	0.0	0.0	0.0	0	0	1.000
DMC 166	166	174	0	0	0	0.0	0.0	0.0	0	0	1.000
DMC 169	169	422	0	0	0	0.0	0.0	0.0	0	0	1.000
DMC 307	307	266	0	0	0	0.0	0.0	0.0	0	0	1.000
DMC 310	310	8508	0	0	0	0.0	0.0	0.0	0	0	5.000
DMC 315	315	77	0	0	0	0.0	0.0	0.0	0	0	1.000
DMC 317	317	882	0	0	0	0.0	0.0	0.0	0	0	1.000
DMC 318	318	377	0	0	0	0.0	0.0	0.0	0	0	1.000
DMC 326	326	245	0	0	0	0.0	0.0	0.0	0	0	1.000
DMC 347	347	144	0	0	0	0.0	0.0	0.0	0	0	1.000
DMC 349	349	144	0	0	0	0.0	0.0	0.0	0	0	1.000
DMC 355	355	187	0	0	0	0.0	0.0	0.0	0	0	1.000
DMC 370	370	791	0	0	0	0.0	0.0	0.0	0	0	1.000
DMC 372	372	334	0	0	0	0.0	0.0	0.0	0	0	1.000
DMC 413	413	902	0	0	0	0.0	0.0	0.0	0	0	1.000
DMC 414	414	653	0	0	0	0.0	0.0	0.0	0	0	1.000
DMC 415	415	442	0	0	0	0.0	0.0	0.0	0	0	1.000
DMC 436	436	350	0	0	0	0.0	0.0	0.0	0	0	1.000
DMC 470	470	264	0	0	0	0.0	0.0	0.0	0	0	1.000
DMC 471	471	421	0	0	0	0.0	0.0	0.0	0	0	1.000
DMC 498	498	428	0	0	0	0.0	0.0	0.0	0	0	1.000
DMC 500	500	285	0	0	0	0.0	0.0	0.0	0	0	1.000
DMC 520	520	724	0	0	0	0.0	0.0	0.0	0	0	1.000
DMC 524	524	107	0	0	0	0.0	0.0	0.0	0	0	1.000
DMC 581	581	861	0	0	0	0.0	0.0	0.0	0	0	1.000
DMC 612	612	311	0	0	0	0.0	0.0	0.0	0	0	1.000
DMC 640	640	325	0	0	0	0.0	0.0	0.0	0	0	1.000
DMC 647	647	117	0	0	0	0.0	0.0	0.0	0	0	1.000
DMC 677	677	351	0	0	0	0.0	0.0	0.0	0	0	1.000
DMC 726	726	59	0	0	0	0.0	0.0	0.0	0	0	1.000
DMC 730	730	2411	0	0	0	0.0	0.0	0.0	0	0	2.000
DMC 732	732	1079	0	0	0	0.0	0.0	0.0	0	0	1.000
DMC 758	758	301	0	0	0	0.0	0.0	0.0	0	0	1.000
DMC 775	775	8707	0	0	0	0.0	0.0	0.0	0	0	5.000
DMC 779	779	571	0	0	0	0.0	0.0	0.0	0	0	1.000
DMC 783	783	69	0	0	0	0.0	0.0	0.0	0	0	1.000
DMC 801	801	725	0	0	0	0.0	0.0	0.0	0	0	1.000
DMC 814	814	1010	0	0	0	0.0	0.0	0.0	0	0	1.000
DMC 822	822	145	0	0	0	0.0	0.0	0.0	0	0	1.000
DMC 829	829	1947	0	0	0	0.0	0.0	0.0	0	0	2.000
DMC 833	833	272	0	0	0	0.0	0.0	0.0	0	0	1.000
DMC 869	869	1317	0	0	0	0.0	0.0	0.0	0	0	1.000
DMC 895	895	219	0	0	0	0.0	0.0	0.0	0	0	1.000
DMC 907	907	182	0	0	0	0.0	0.0	0.0	0	0	1.000
DMC 918	918	164	0	0	0	0.0	0.0	0.0	0	0	1.000
DMC 930	930	307	0	0	0	0.0	0.0	0.0	0	0	1.000
DMC 934	934	3211	0	0	0	0.0	0.0	0.0	0	0	2.000
DMC 936	936	2158	0	0	0	0.0	0.0	0.0	0	0	2.000
DMC 938	938	1225	0	0	0	0.0	0.0	0.0	0	0	1.000
DMC 961	961	171	0	0	0	0.0	0.0	0.0	0	0	1.000

Type	Number	Full	Half	Quarter	Petite	Back(in)	Str(in)	Spec(in)	French	Bead	Skein Est.
DMC	3012	940	0	0	0	0.0	0.0	0.0	0	0	1.000
DMC	3023	99	0	0	0	0.0	0.0	0.0	0	0	1.000
DMC	3031	1186	0	0	0	0.0	0.0	0.0	0	0	1.000
DMC	3041	120	0	0	0	0.0	0.0	0.0	0	0	1.000
DMC	3042	241	0	0	0	0.0	0.0	0.0	0	0	1.000
DMC	3363	575	0	0	0	0.0	0.0	0.0	0	0	1.000
DMC	3364	237	0	0	0	0.0	0.0	0.0	0	0	1.000
DMC	3371	1968	0	0	0	0.0	0.0	0.0	0	0	2.000
DMC	3705	265	0	0	0	0.0	0.0	0.0	0	0	1.000
DMC	3713	147	0	0	0	0.0	0.0	0.0	0	0	1.000
DMC	3722	183	0	0	0	0.0	0.0	0.0	0	0	1.000
DMC	3740	176	0	0	0	0.0	0.0	0.0	0	0	1.000
DMC	3743	235	0	0	0	0.0	0.0	0.0	0	0	1.000
DMC	3747	230	0	0	0	0.0	0.0	0.0	0	0	1.000
DMC	3768	766	0	0	0	0.0	0.0	0.0	0	0	1.000
DMC	3770	443	0	0	0	0.0	0.0	0.0	0	0	1.000
DMC	3787	870	0	0	0	0.0	0.0	0.0	0	0	1.000
DMC	3799	1739	0	0	0	0.0	0.0	0.0	0	0	1.000
DMC	3801	236	0	0	0	0.0	0.0	0.0	0	0	1.000
DMC	3819	585	0	0	0	0.0	0.0	0.0	0	0	1.000
DMC	3826	360	0	0	0	0.0	0.0	0.0	0	0	1.000
DMC	3830	205	0	0	0	0.0	0.0	0.0	0	0	1.000
DMC	3831	157	0	0	0	0.0	0.0	0.0	0	0	1.000
DMC	3858	226	0	0	0	0.0	0.0	0.0	0	0	1.000
DMC	3860	198	0	0	0	0.0	0.0	0.0	0	0	1.000
DMC	3861	97	0	0	0	0.0	0.0	0.0	0	0	1.000
DMC	3862	1158	0	0	0	0.0	0.0	0.0	0	0	1.000
DMC	B5200	624	0	0	0	0.0	0.0	0.0	0	0	1.000