

Artecy

CROSS STITCH

Cats and Flowers

Adapted from Artwork by Carl Reichert



Cross Stitch Design by Tereena Clarke.

Completed Size = 238w x 300h Stitches

14 Count, 17w x 21.5h inches (43cm x 55cm)

16 Count, 15w x 19h inches (38cm x 48cm)

18 Count, 13.5w x 17h inches (34cm x 43cm)

Uses 64 DMC cotton colours. Only full cross stitches are used in this pattern.

Pattern Instructions

* This pattern can be worked on any fabric type, colour or count you prefer. To work out the size of the finished article, take the number of stitches wide and high and divide it by the count of your fabric (e.g. 14,16,18 count aida etc) to get the size in inches. Times it by 2.54 to get centimetres. We have the sizes in inches shown on the previous page. Also leave at least a few inches of fabric around each side of the design to assist in framing. The higher the fabric count the smaller the completed project will be.

* To put the pattern together look in the top and bottom corners. The page numbers in brackets show which page number it joins up to. Page 1 always starts at the top left hand side of the pattern. Our pages also have a shaded grey section. This indicates a 3 row overlap from adjoining pages to assist with reading the pattern. PLEASE DO NOT RESTITCH THIS AREA.

* You should begin at the centre of the pattern. To find the centre of the pattern it is just a matter of laying the pattern out and locating the arrows at the top and left hand side of the patterns, they are determined by dividing the stitch numbers wide and high in half. Where the two points meet in the middle, that is the centre.

* If you need more assistance to find the middle of your pattern or the page layout, please see the notes section on the colour symbol chart. The easiest way to stitch this pattern, as it has multiple pages, is to stitch one page at a time.

* We suggest using two strands of floss for each stitch and one strand for backstitching if the pattern calls for it.

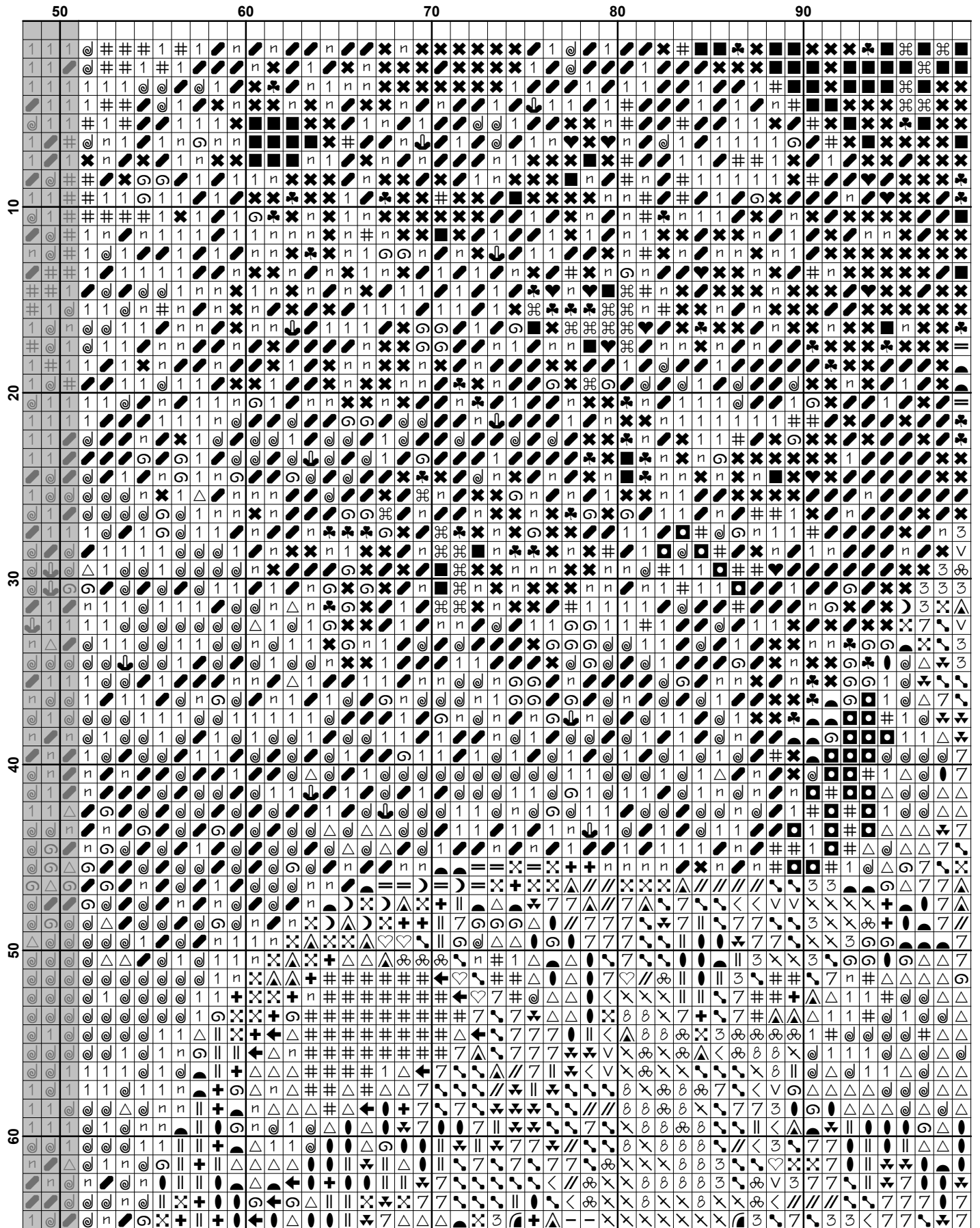
We hope you enjoy stitching our pattern.

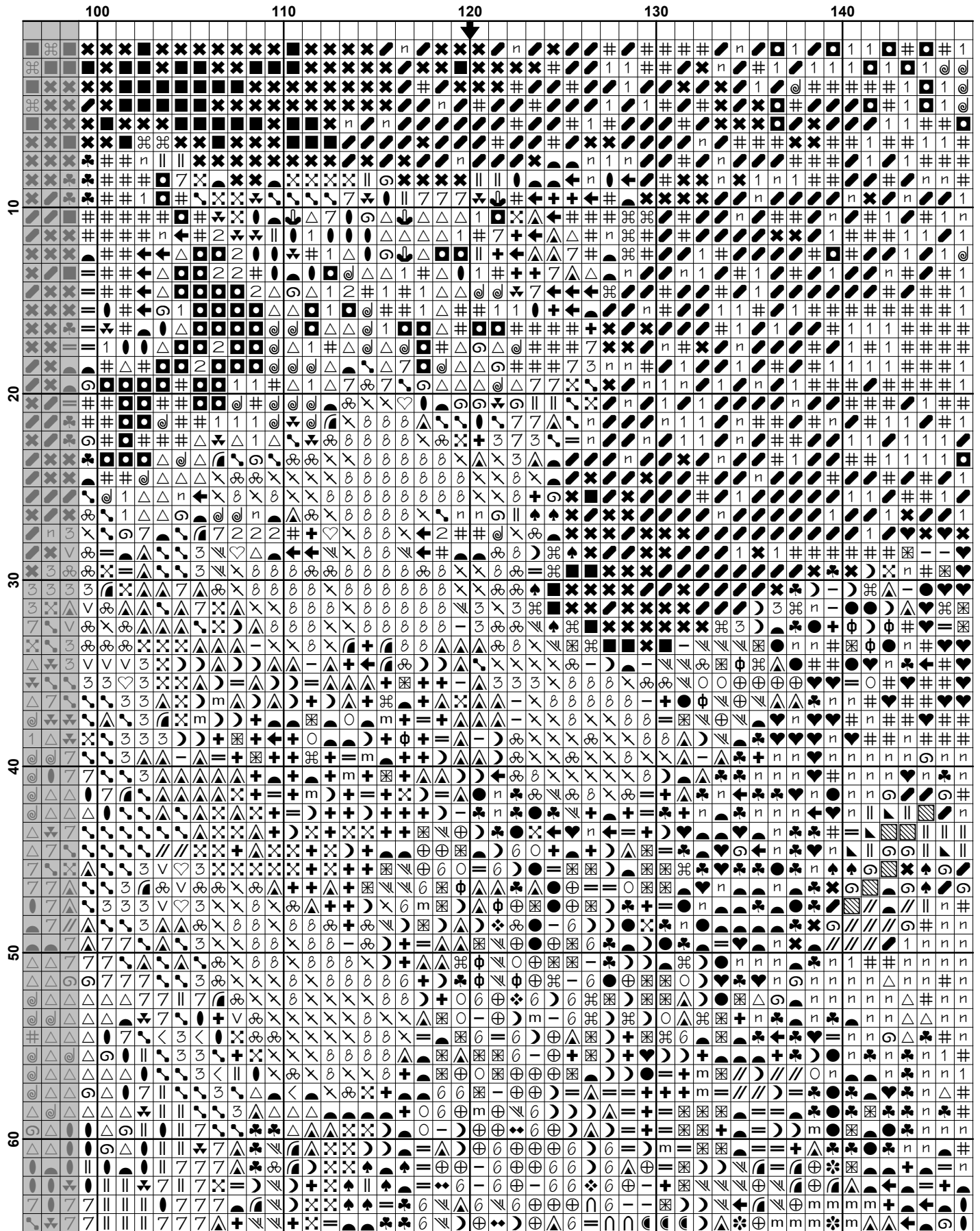
Thanks and Best Wishes
Tereena Clarke

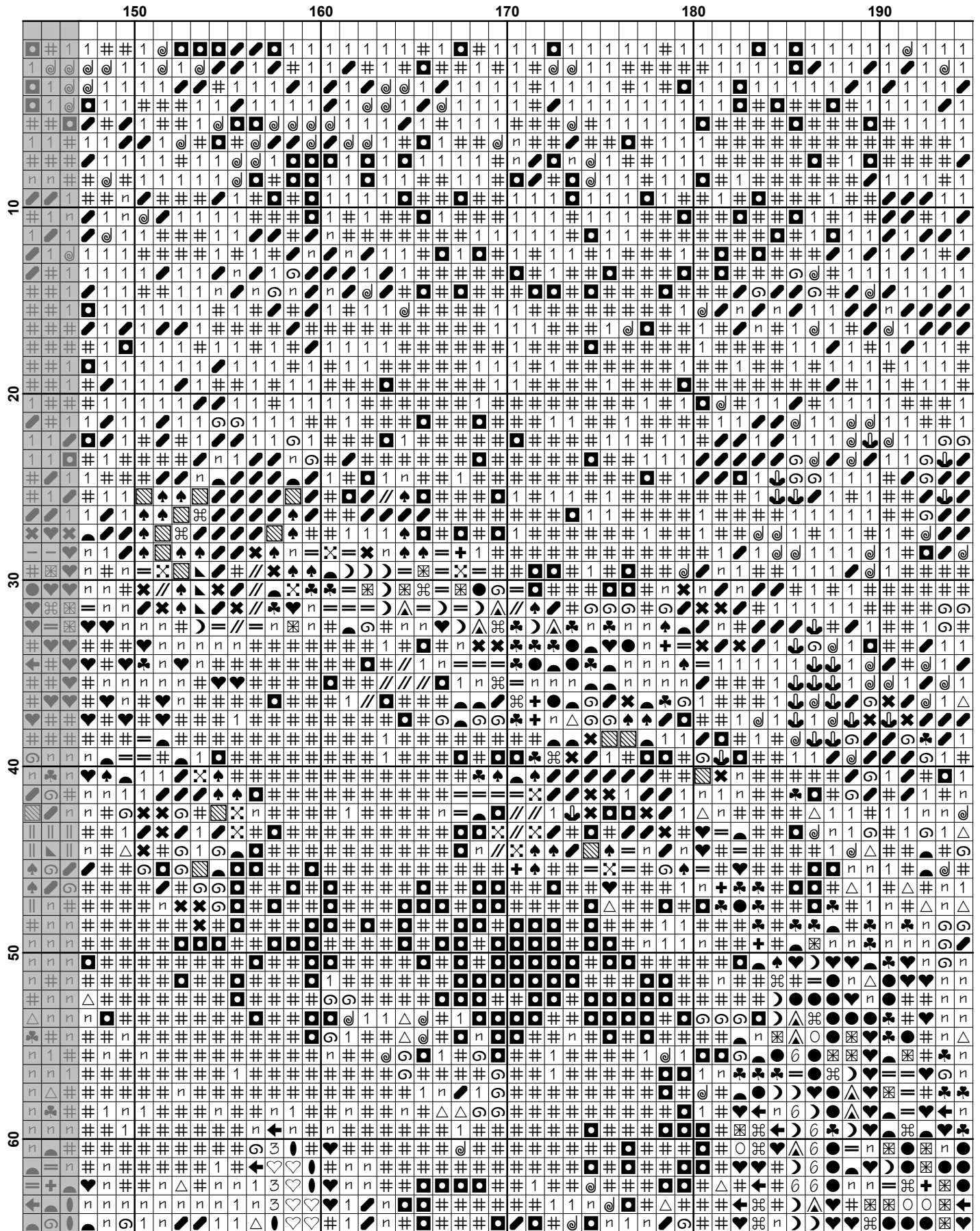
Artecy Cross Stitch
Po Box 3474
Tuggerah, NSW 2259
Australia

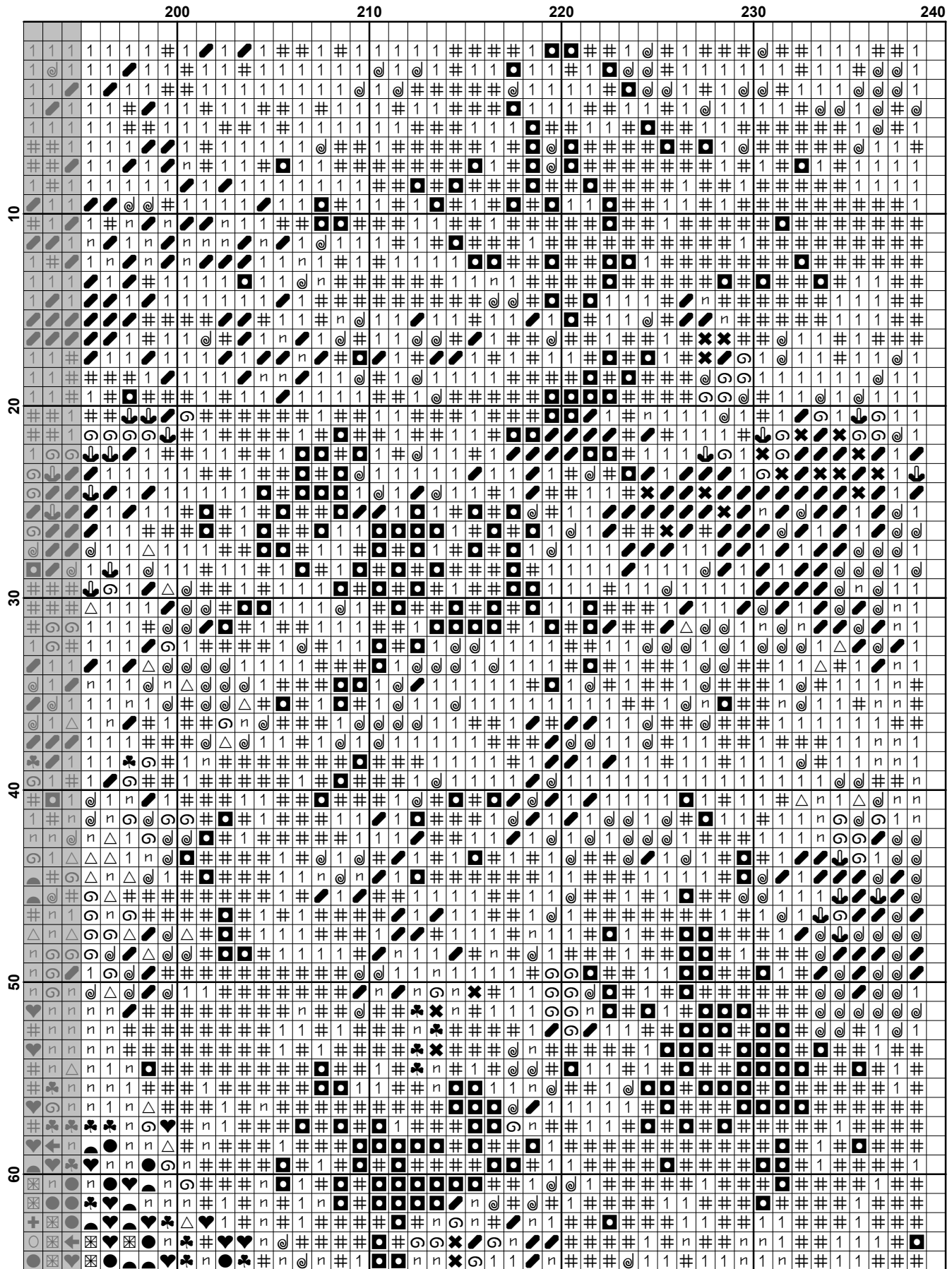
Websites: www.artecy.com and www.artecyshop.com
Email: artecy@artecy.com or stitch@artecyshop.com

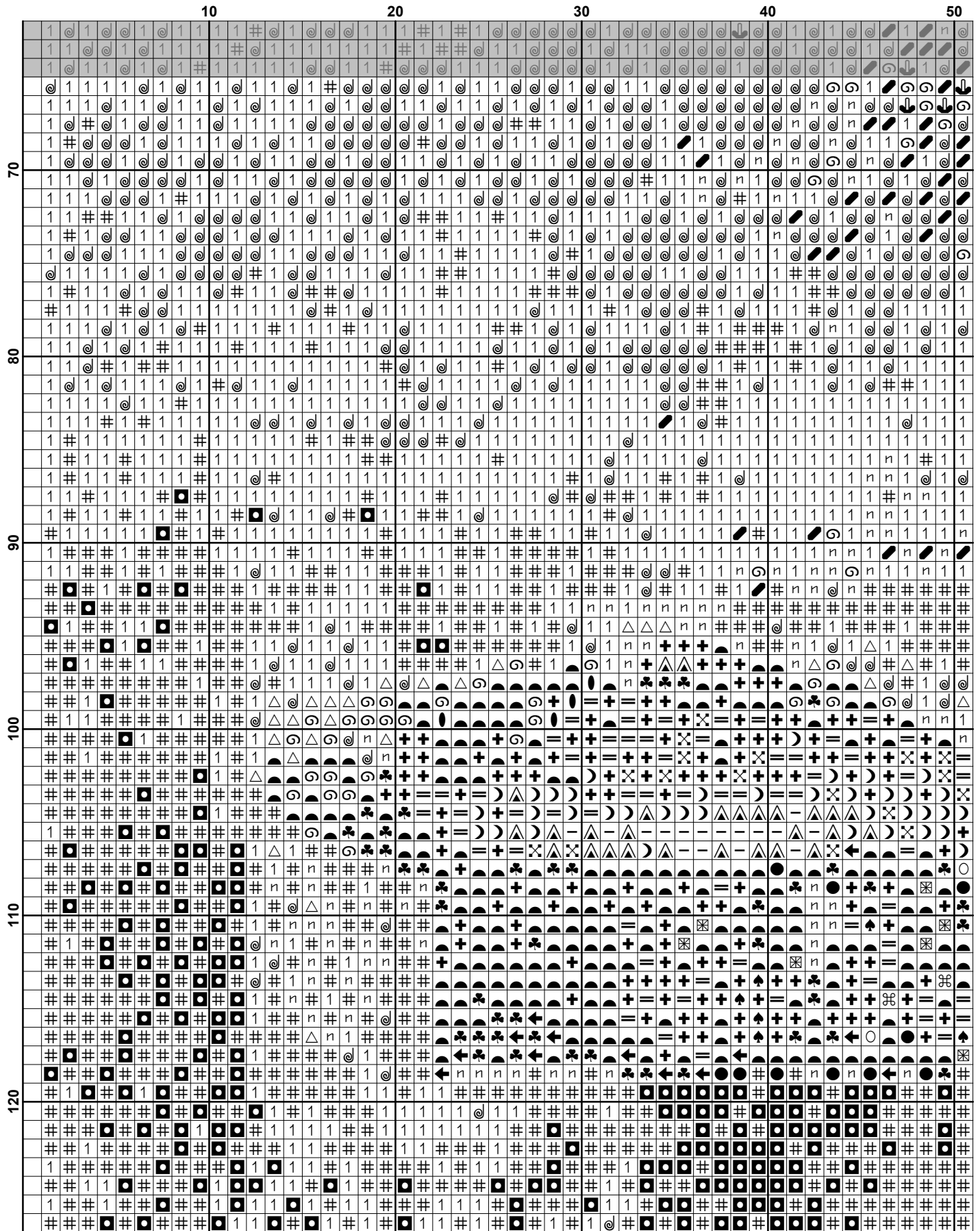
*Patterns are strictly for personal use only. It is against our copyright to make kits for sale from our designs or to sell, copy or redistribute this pattern in any form. You may not upload our patterns to any internet forums or groups or any other website. You may make 1 copy of this pattern for a working copy for your own personal use if needed.

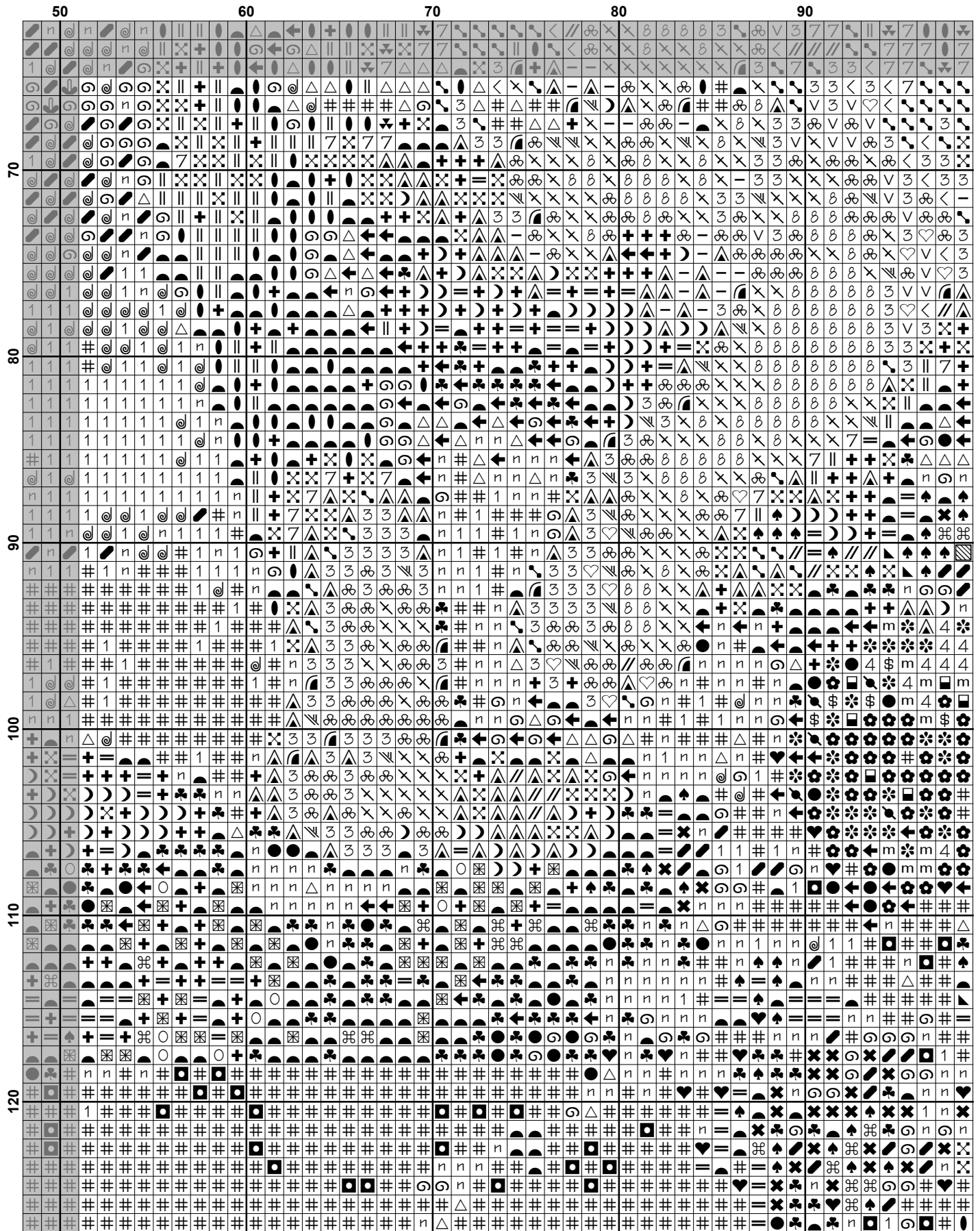


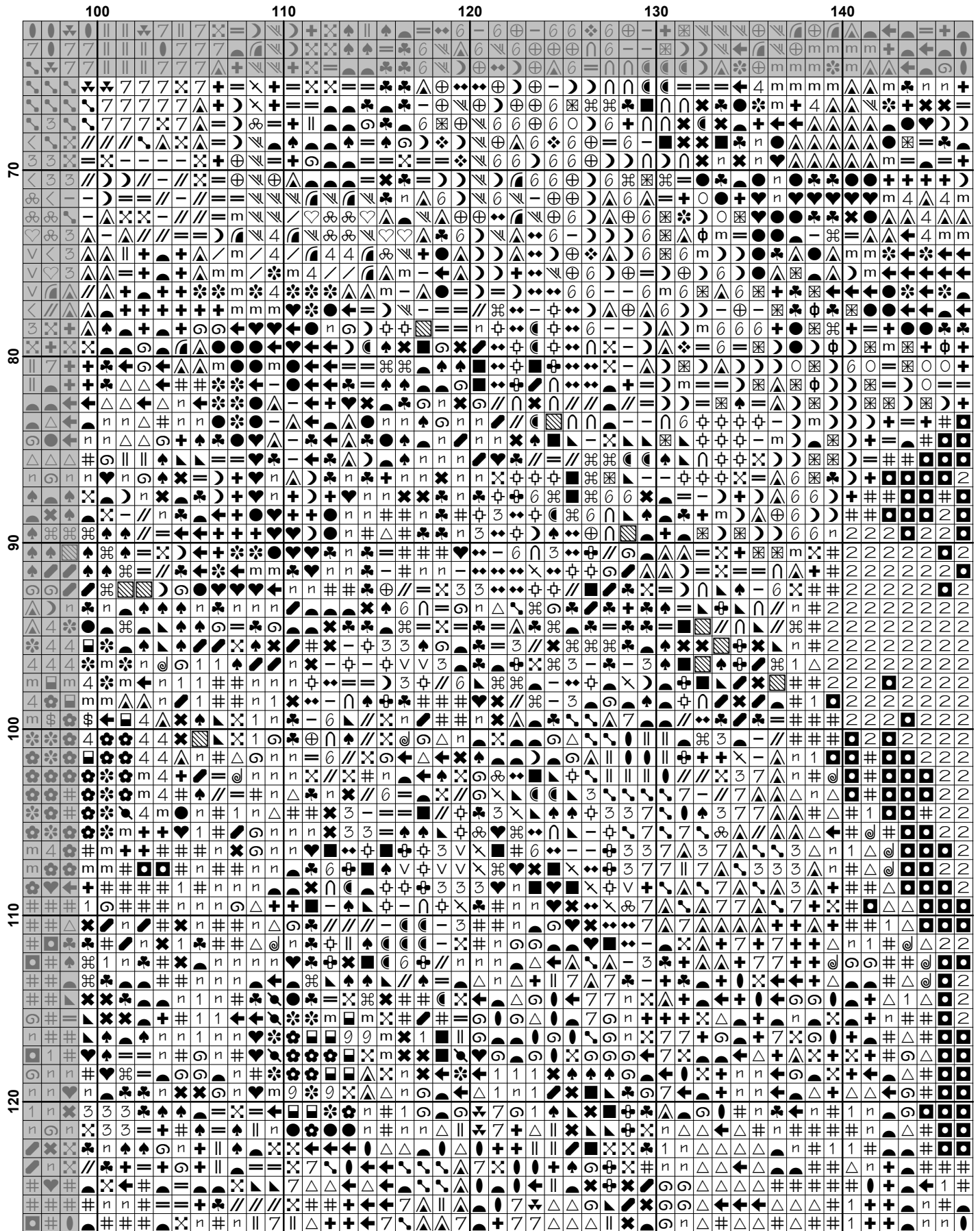


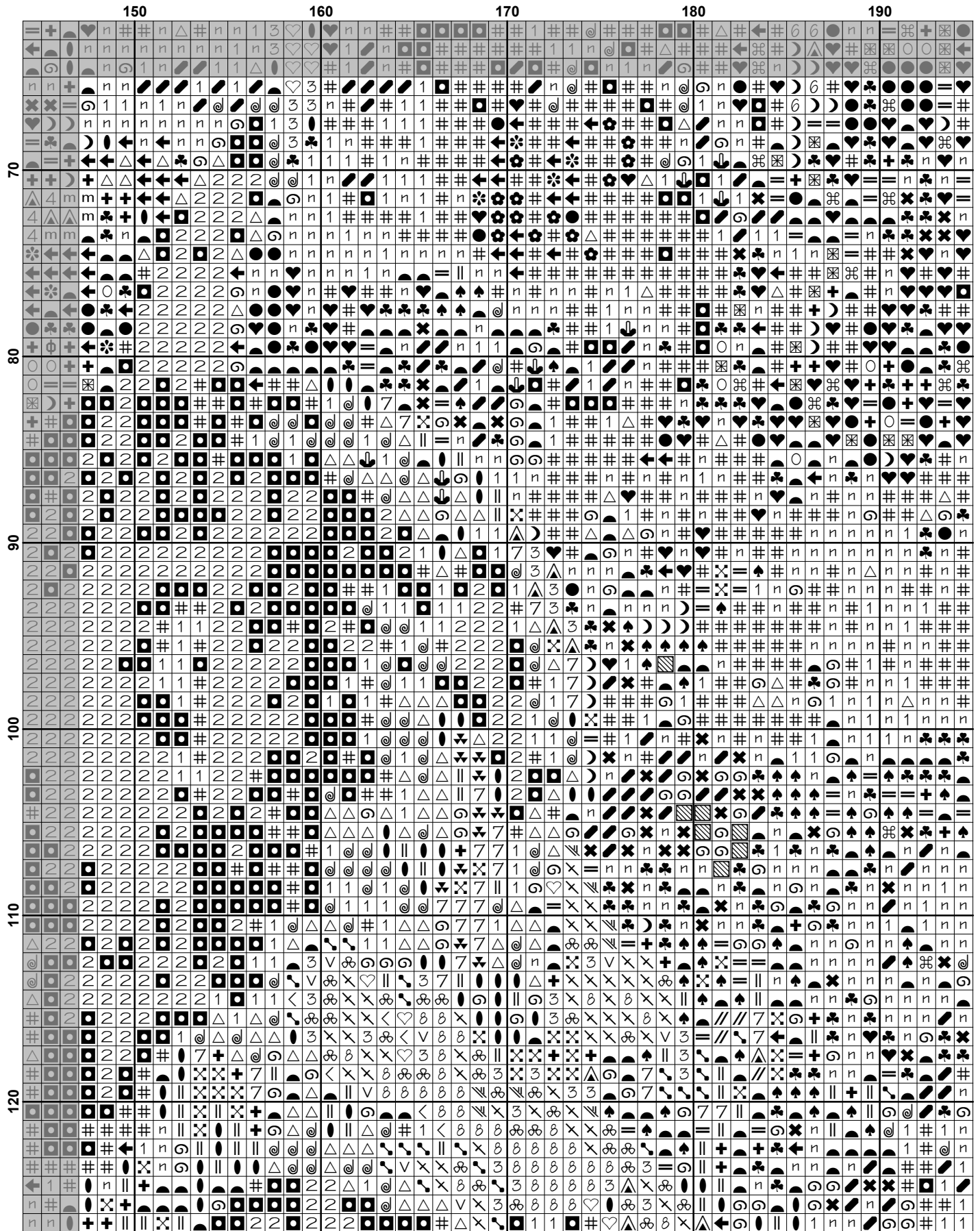


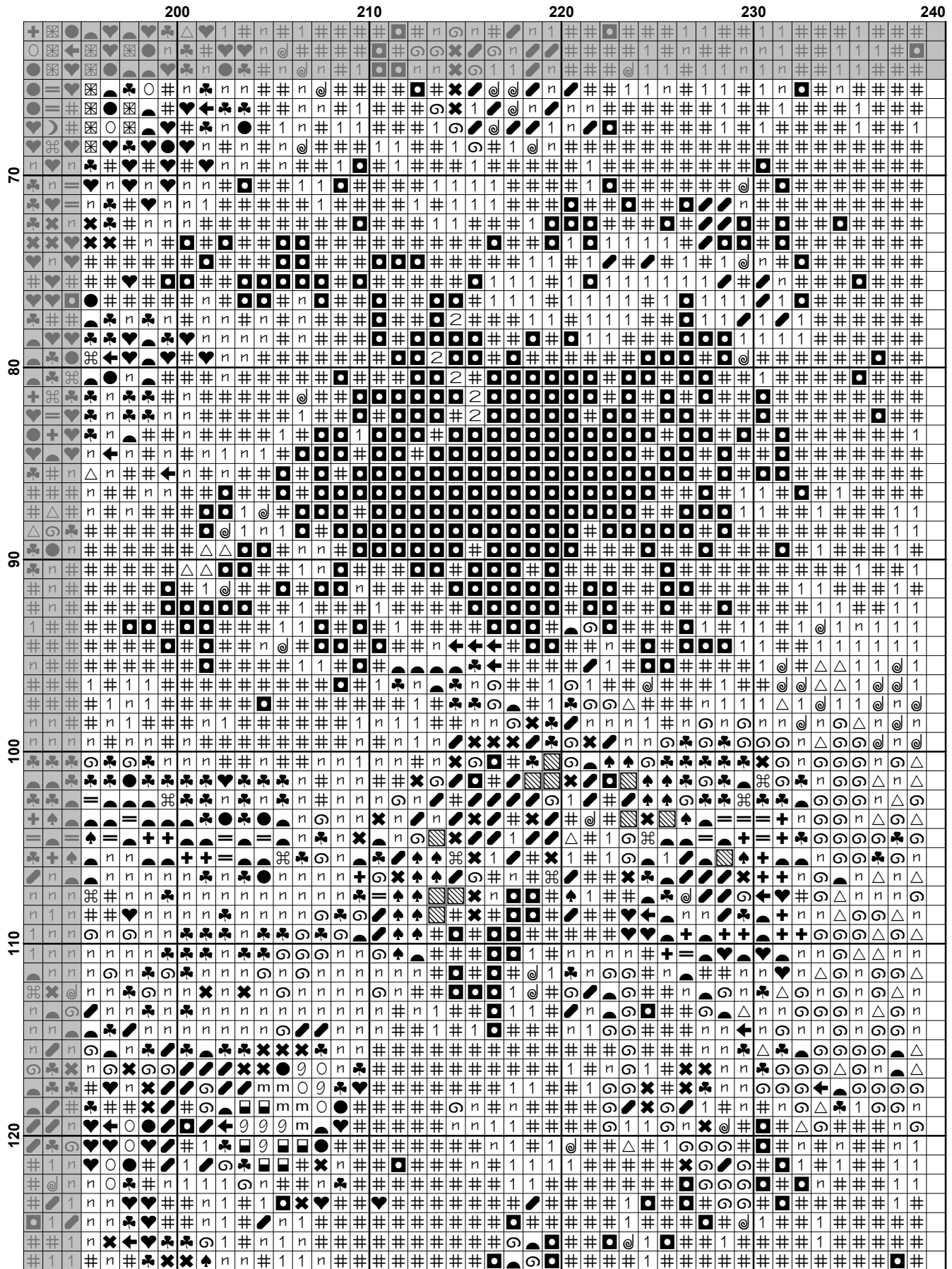


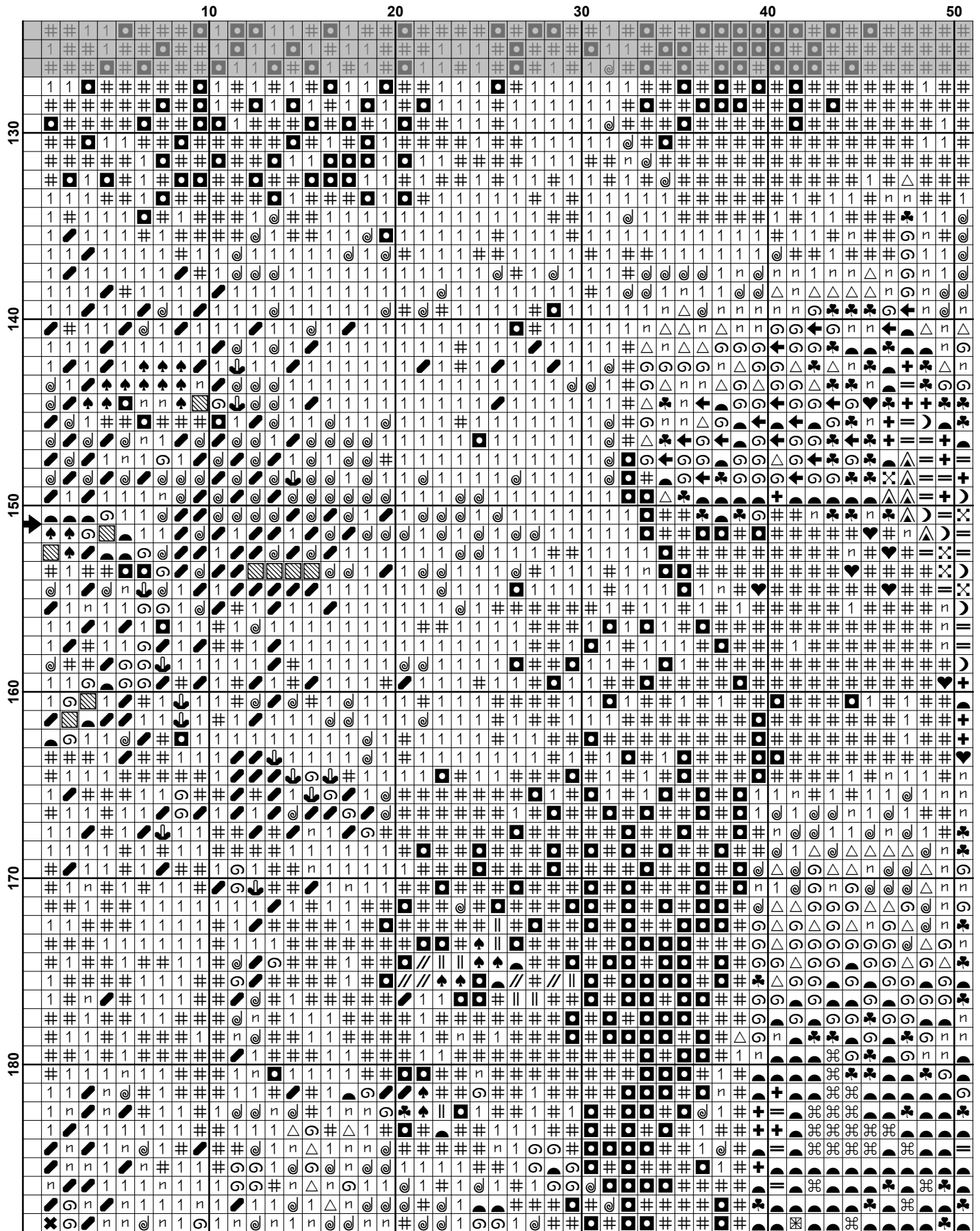


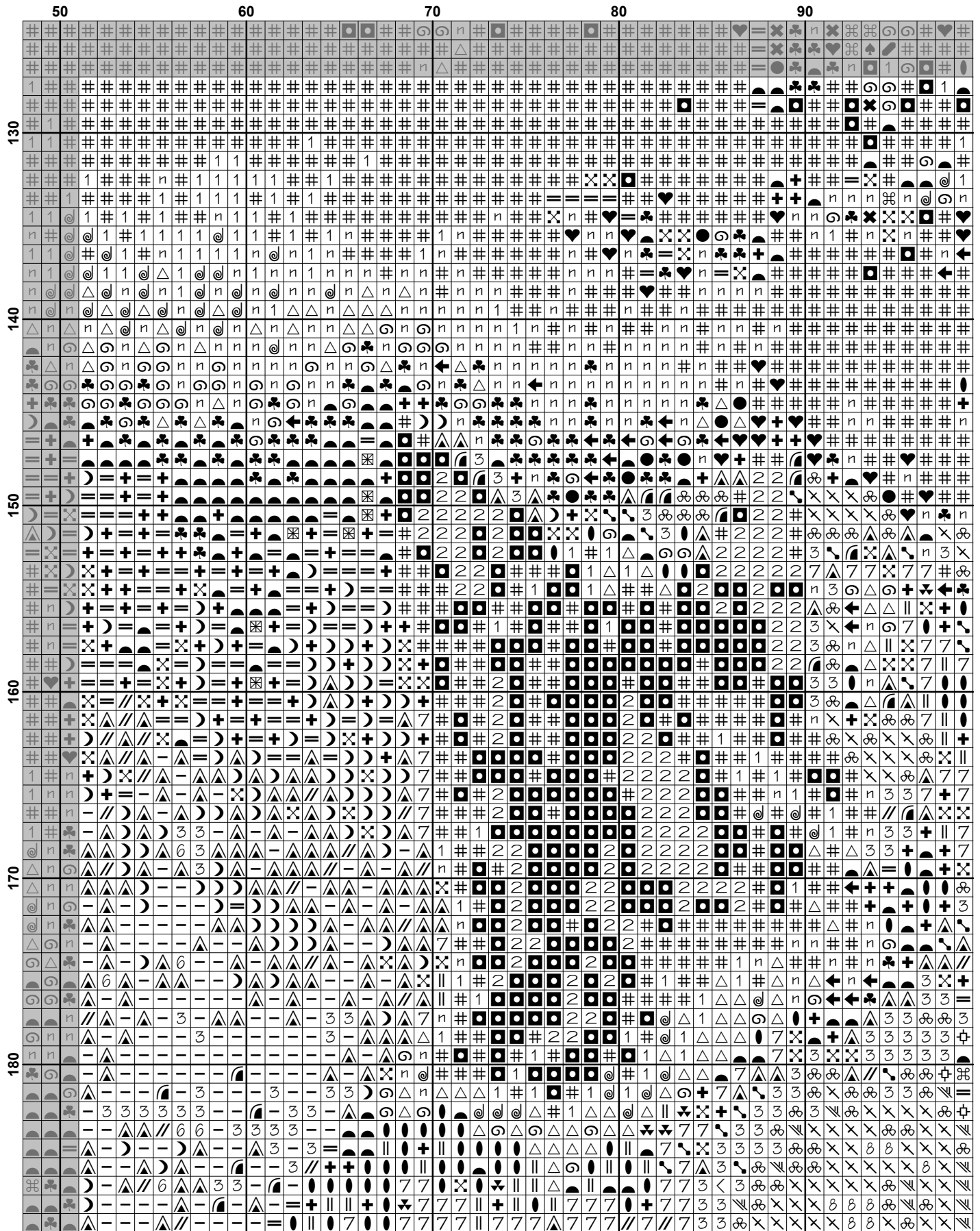


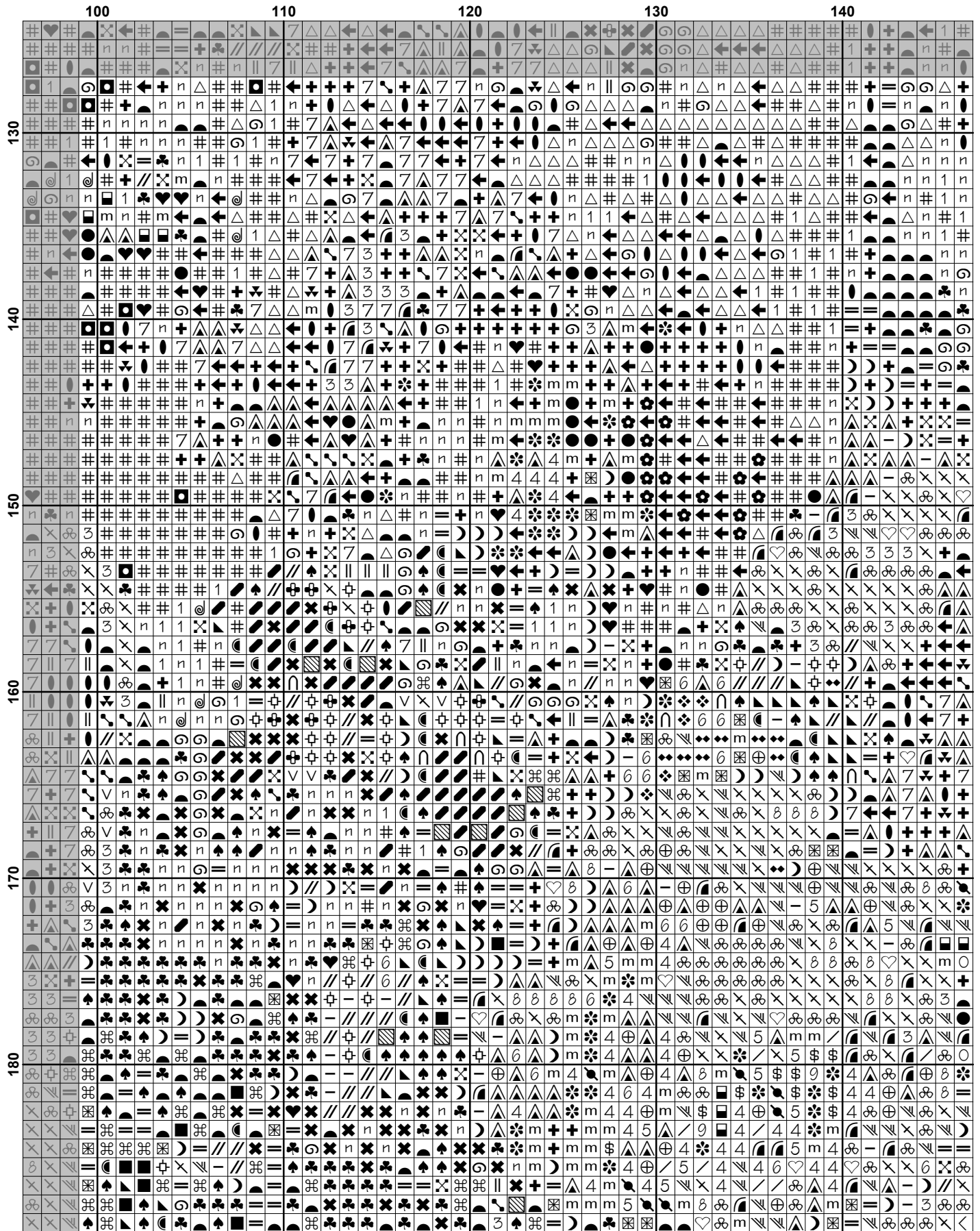


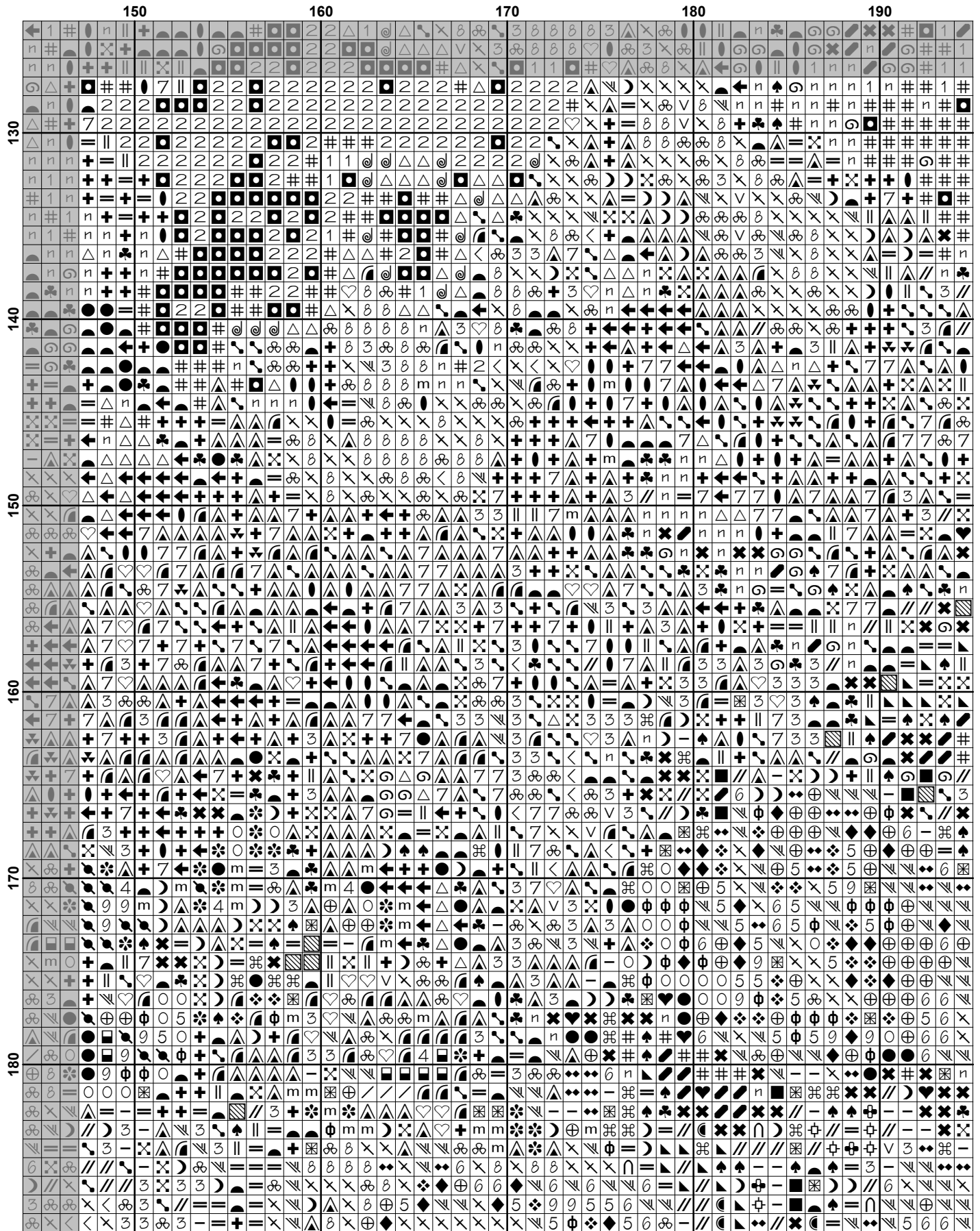


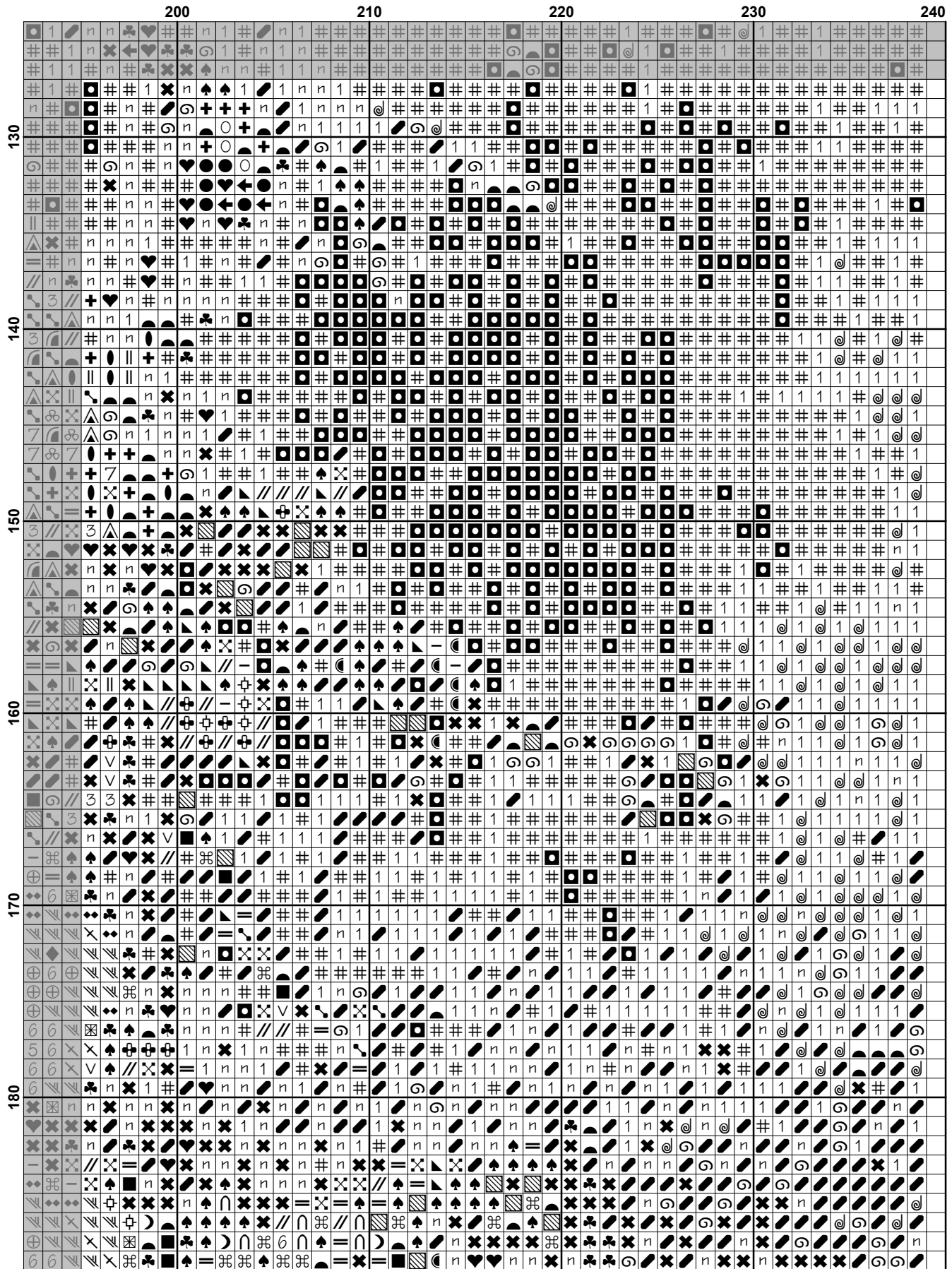


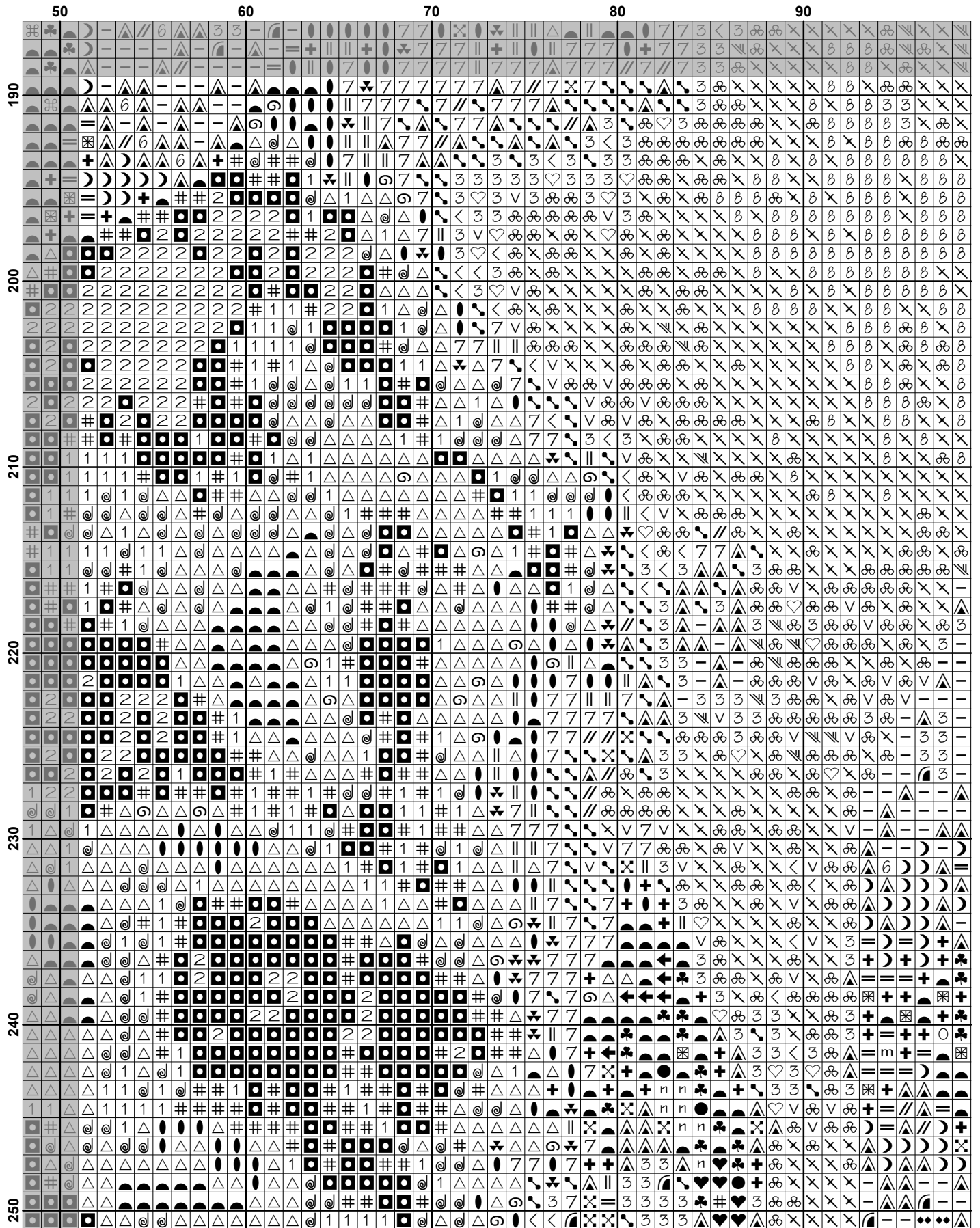


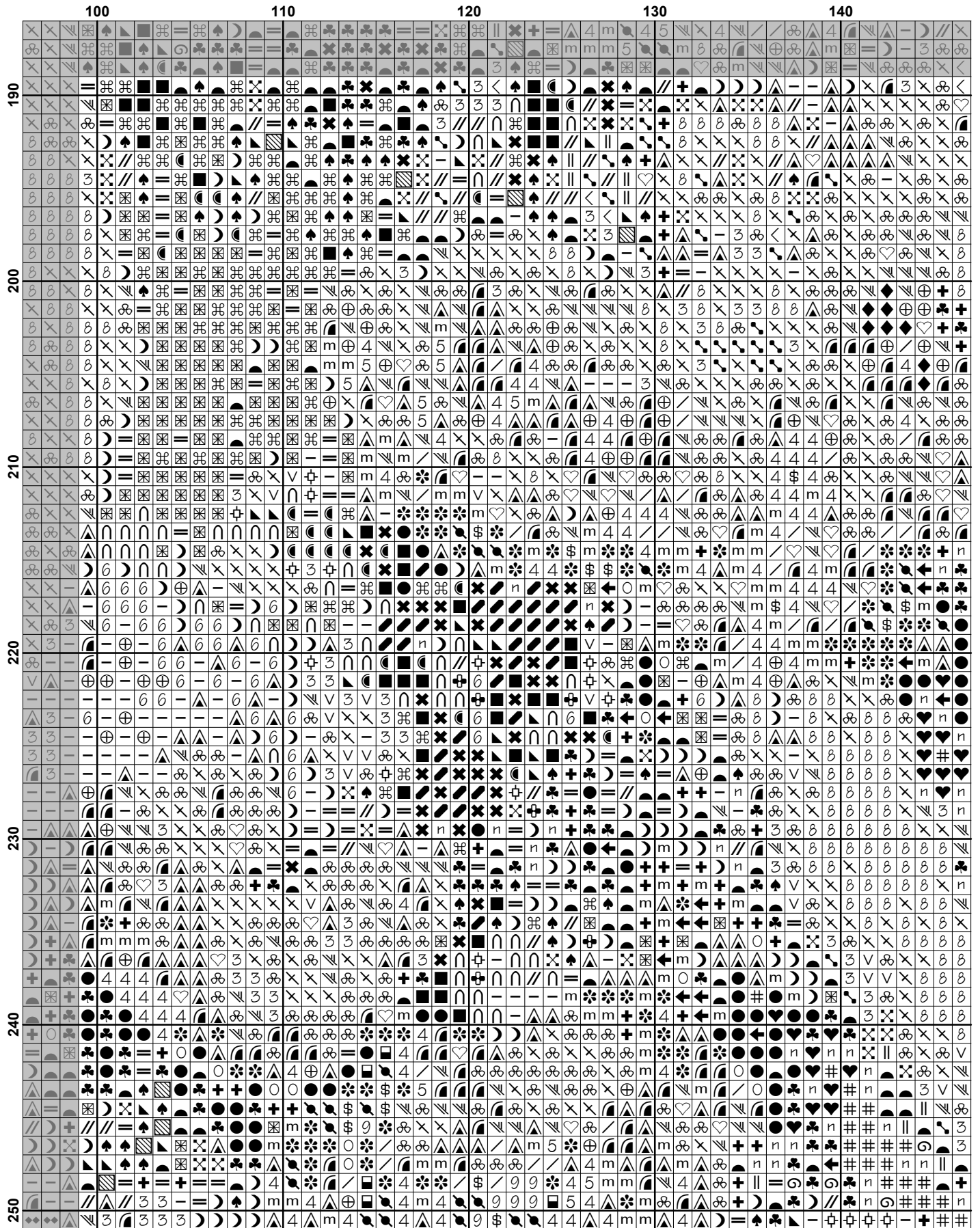


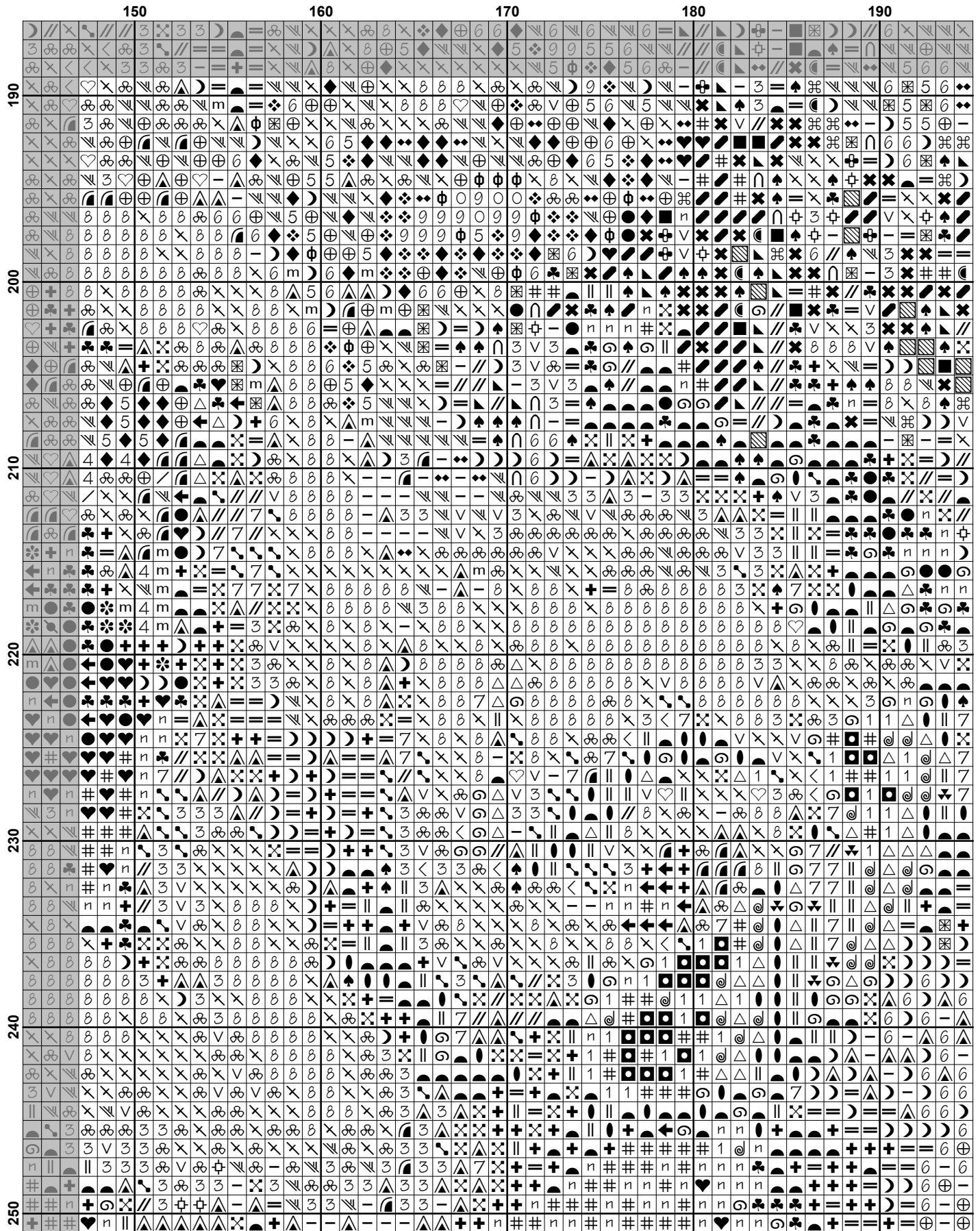


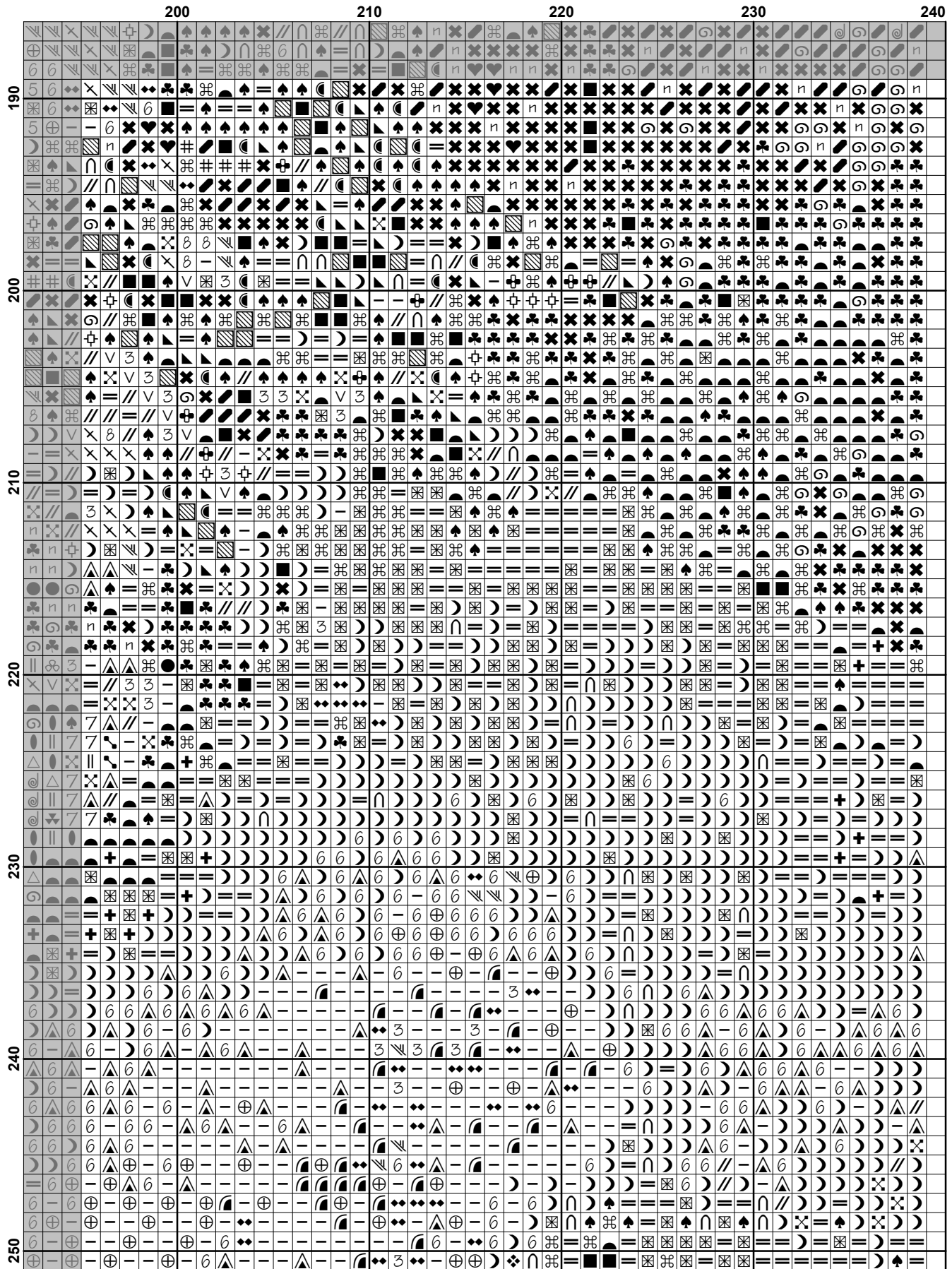


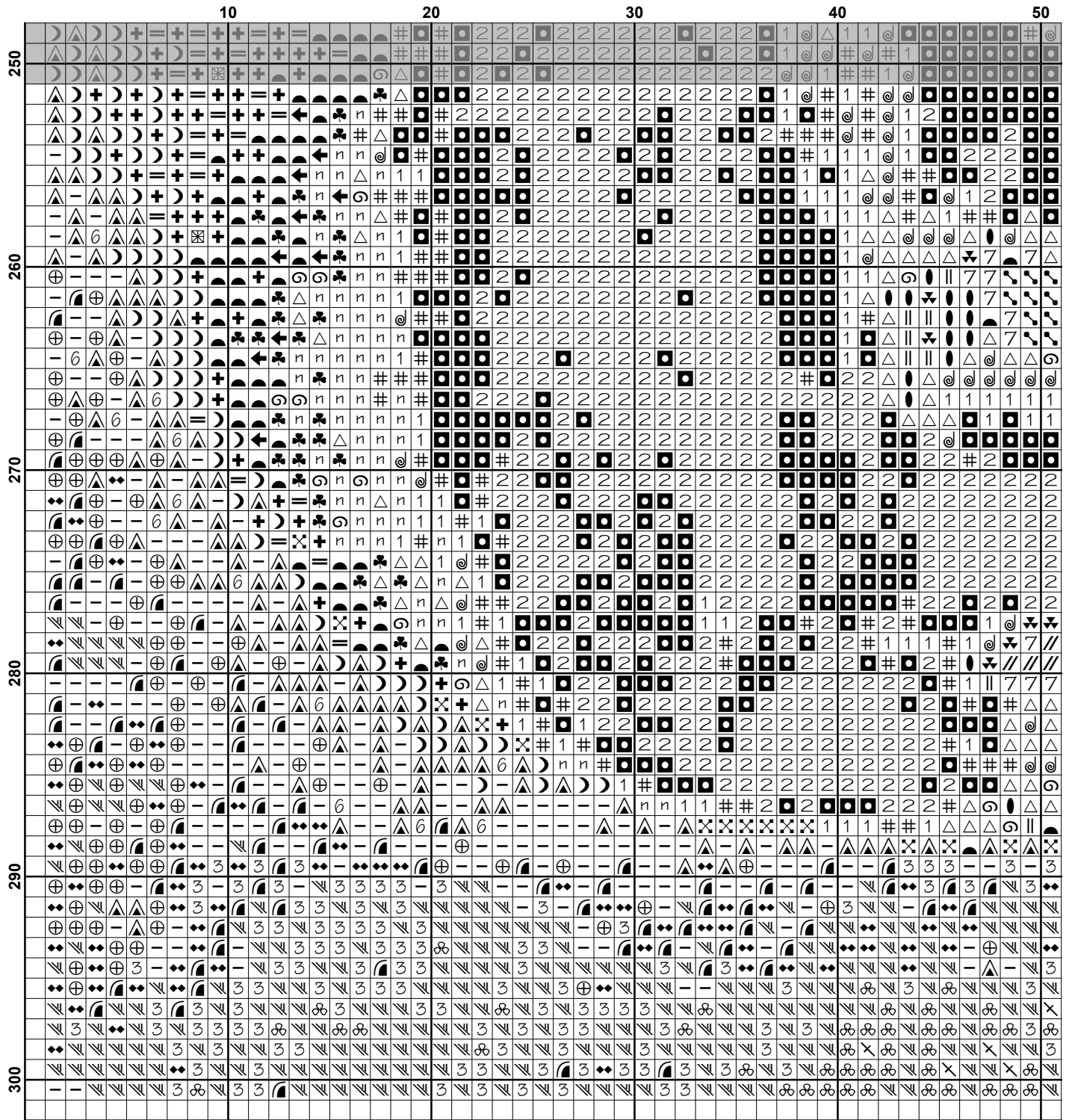


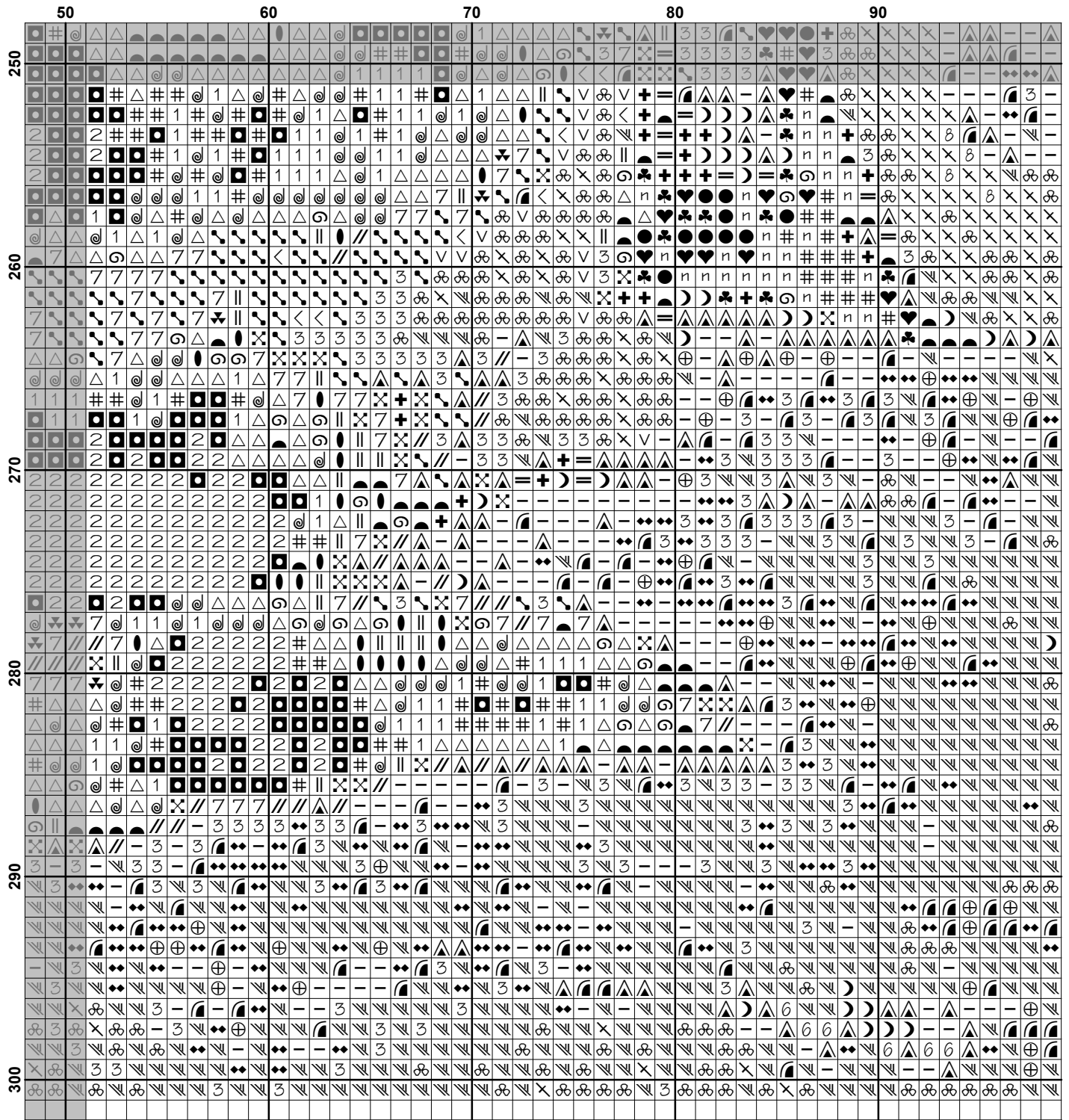


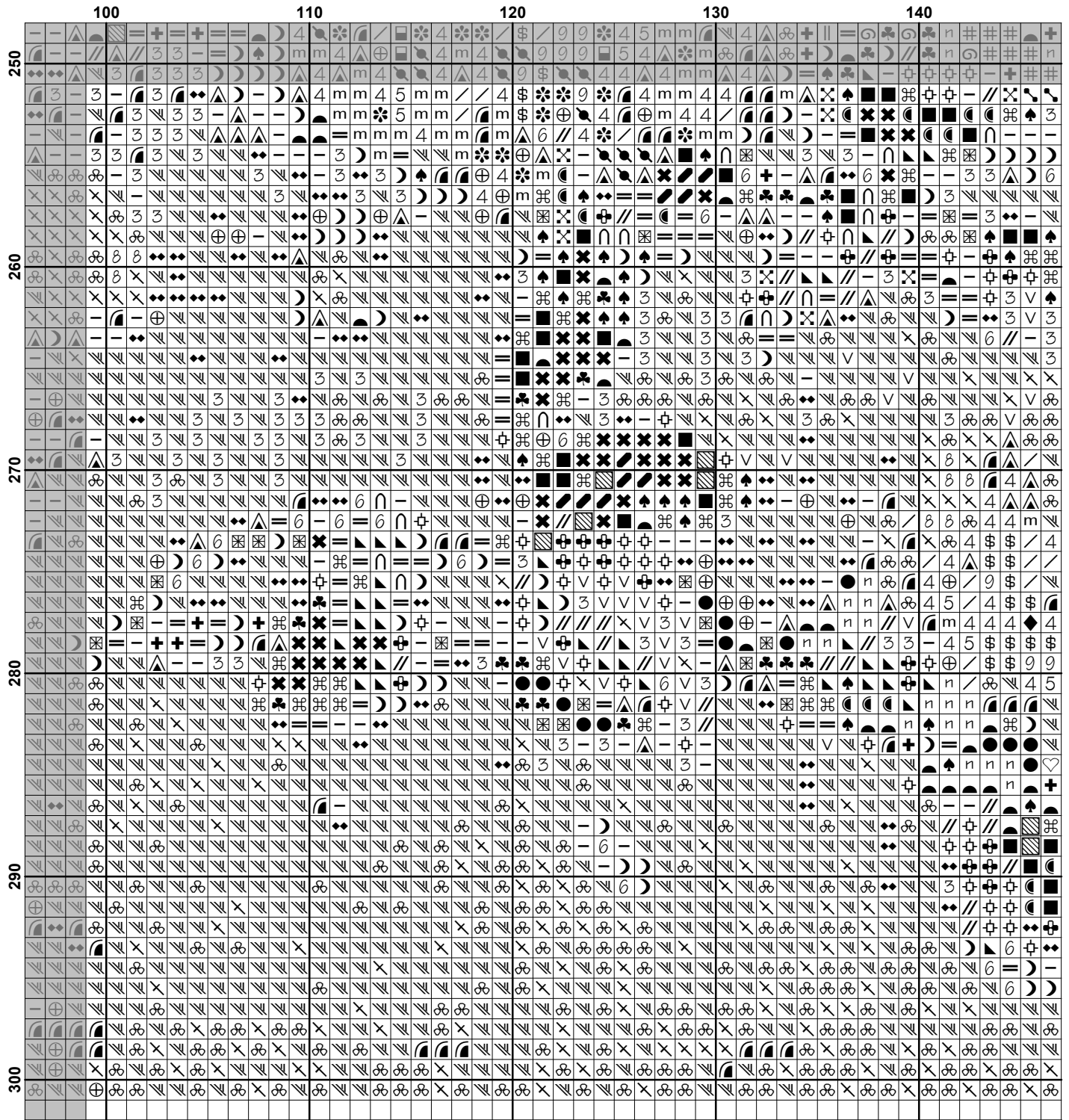


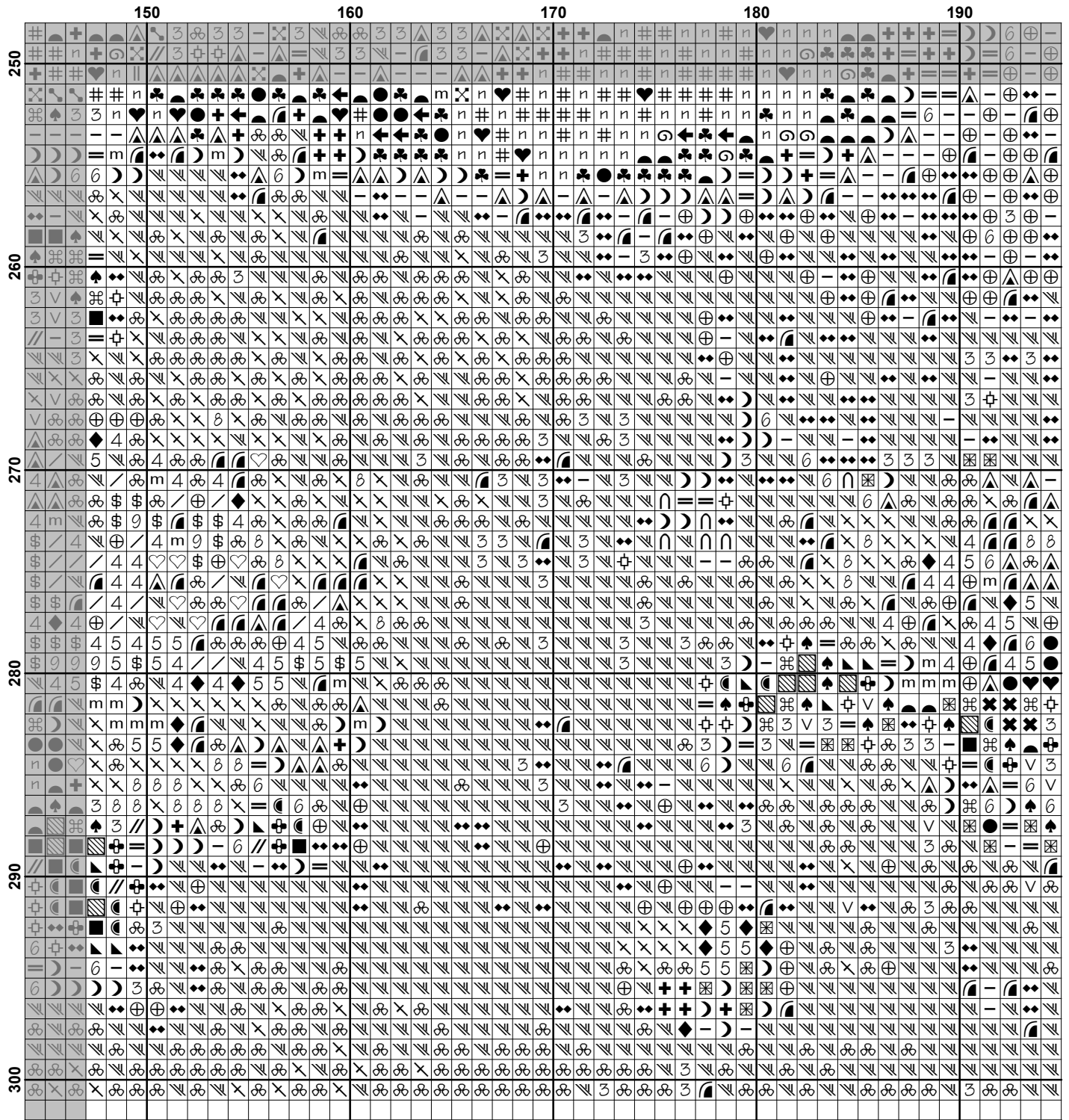


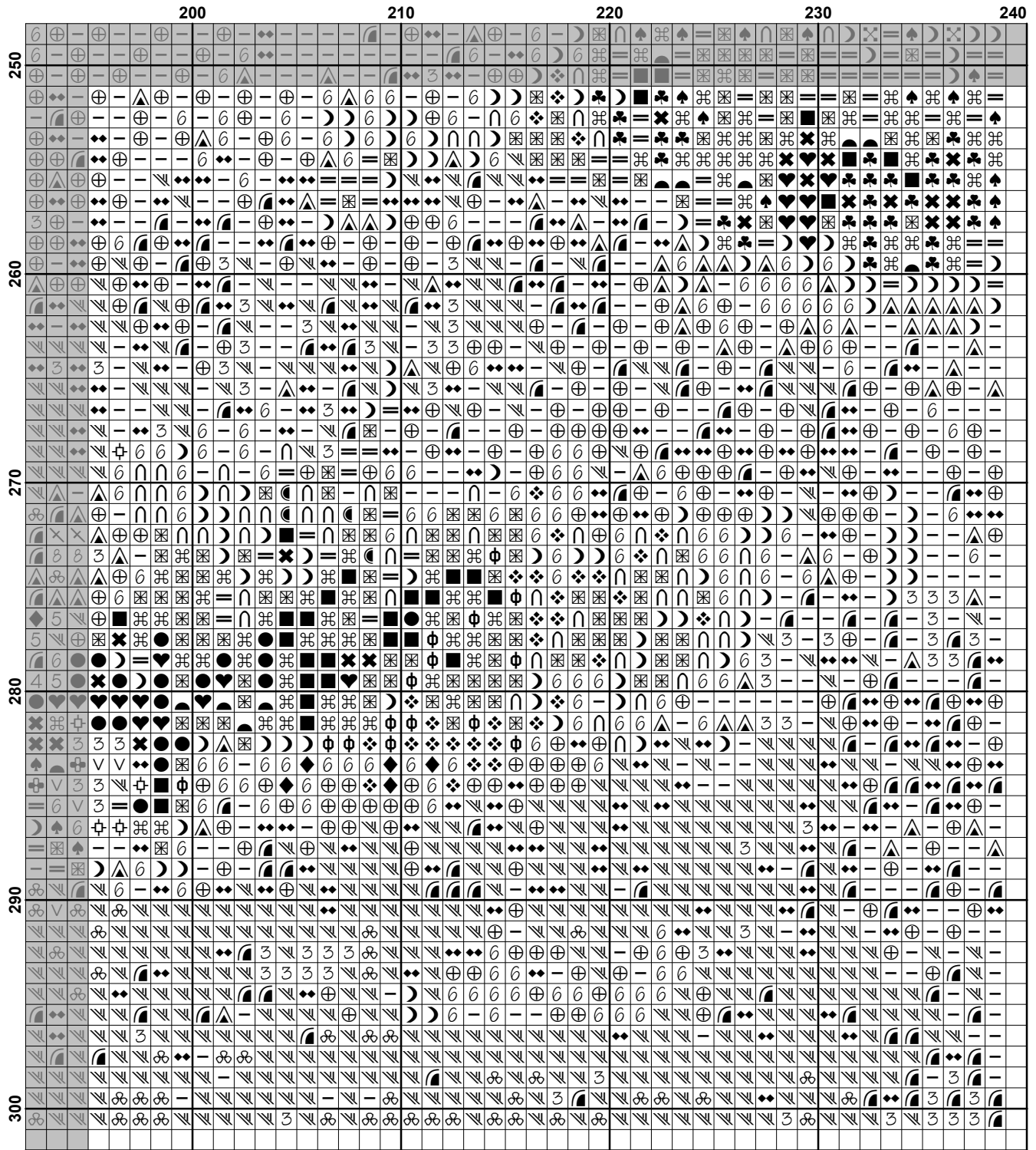
































Pattern Name: Cats and Flowers
Designed By: Artwork by Carl Reichert
Company: Artecy Cross Stitch
Copyright: Copyright Artecy Cross Stitch. All rights Reserved.
Fabric: Aida 14, White
 238w X 300h Stitches
Size(s): 14 Count, 17w X 21-3/8h in
 16 Count, 14-7/8w X 18-3/4h in
 18 Count, 13-1/8w X 16-5/8h in

Floss Used for Full Stitches:

Symbol	Strands	Type	Number	Color
	2	DMC	300	Mahogany-VY DK
0	2	DMC	301	Mahogany-MD
2	2	DMC	310	Black
\$	2	DMC	350	Coral-MD
m	2	DMC	356	Terra Cotta-MD
=	2	DMC	370	Mustard-MD
//	2	DMC	372	Mustard-LT
-	2	DMC	422	Hazelnut Brown-LT
↘	2	DMC	451	Shell Gray-DK
☾	2	DMC	470	Avocado Green-LT
▲	2	DMC	471	Avocado Green-VY LT
⊗	2	DMC	498	Christmas Red-DK
⊙	2	DMC	610	Drab Brown-DK
⊗	2	DMC	612	Drab Brown-LT
	2	DMC	640	Beige Gray-VY DK
◆	2	DMC	676	Old Gold-LT
v	2	DMC	677	Old Gold-VY LT
9	2	DMC	720	Orange Spice-DK
6	2	DMC	729	Old Gold-MD
×	2	DMC	730	Olive Green-VY DK
■	2	DMC	732	Olive Green
3	2	DMC	738	Tan-VY LT
/	2	DMC	760	Salmon
❖	2	DMC	783	Topaz-MD
n	2	DMC	801	Coffee Brown-DK
⌘	2	DMC	831	Golden Olive-MD
∩	2	DMC	833	Golden Olive-LT
△	2	DMC	839	Beige Brown-DK
7	2	DMC	841	Beige Brown-LT
<	2	DMC	842	Beige Brown-VY LT
♣	2	DMC	869	Hazelnut Brown-VY DK
▣	2	DMC	919	Red Copper
☞	2	DMC	920	Copper-MD
5	2	DMC	922	Copper-LT
☞	2	DMC	936	Avocado Green-VY DK
#	2	DMC	938	Coffee Brown-UL DK
⊗	2	DMC	945	Tawny
×	2	DMC	951	Tawny-LT
●	2	DMC	975	Golden Brown-DK
♠	2	DMC	3012	Khaki Green-MD
@	2	DMC	3021	Brown Gray-VY DK
1	2	DMC	3031	Mocha Brown-VY DK
⊕	2	DMC	3046	Yellow Beige-MD
▲	2	DMC	3064	Desert Sand
▨	2	DMC	3346	Hunter Green

Symbol	Strands	Type	Number	Color
	2	DMC	3348	Yellow Green-LT
	2	DMC	3362	Pine Green-DK
	2	DMC	3371	Black Brown
	4	DMC	3712	Salmon-MD
	2	DMC	3770	Tawny-VY LT
	2	DMC	3771	Terra Cotta-UL VY LT
	2	DMC	3772	Desert Sand-VY DK
	2	DMC	3779	Terra Cotta-UL VY LT
	2	DMC	3826	Golden Brown
	2	DMC	3827	Golden Brown-Pale
	2	DMC	3828	Hazelnut Brown
	2	DMC	3829	Old Gold-VY DK
	2	DMC	3830	Terra Cotta-MD
	2	DMC	3854	Autumn Gold-MD
	2	DMC	3856	Mahogany-UL VY LT
	2	DMC	3858	Rosewood-MD
	2	DMC	3860	Cocoa
	2	DMC	3862	Mocha Beige-DK
	2	DMC	3864	Mocha Beige-LT

Notes:

The middle of this pattern can be found on page 13 and is 120 stitches across and 151 stitches down.

Pattern layout using page numbers in top left.

```

1  2  3  4  5
6  7  8  9 10
11 12 13 14 15
16 17 18 19 20
21 22 23 24 25

```

Usage Summary

Strands Per Skein: 6

Skein Length: 313.0 in

Type	Number	Full	Half	Quarter	Petite	Back(in)	Str(in)	Spec(in)	French	Bead	Skein Est.
DMC 300	300	475	0	0	0	0.0	0.0	0.0	0	0	1.000
DMC 301	301	104	0	0	0	0.0	0.0	0.0	0	0	1.000
DMC 310	310	1657	0	0	0	0.0	0.0	0.0	0	0	1.000
DMC 350	350	57	0	0	0	0.0	0.0	0.0	0	0	1.000
DMC 356	356	320	0	0	0	0.0	0.0	0.0	0	0	1.000
DMC 370	370	1630	0	0	0	0.0	0.0	0.0	0	0	1.000
DMC 372	372	455	0	0	0	0.0	0.0	0.0	0	0	1.000
DMC 422	422	1713	0	0	0	0.0	0.0	0.0	0	0	1.000
DMC 451	451	139	0	0	0	0.0	0.0	0.0	0	0	1.000
DMC 470	470	139	0	0	0	0.0	0.0	0.0	0	0	1.000
DMC 471	471	223	0	0	0	0.0	0.0	0.0	0	0	1.000
DMC 498	498	90	0	0	0	0.0	0.0	0.0	0	0	1.000
DMC 610	610	1394	0	0	0	0.0	0.0	0.0	0	0	1.000
DMC 612	612	764	0	0	0	0.0	0.0	0.0	0	0	1.000
DMC 640	640	449	0	0	0	0.0	0.0	0.0	0	0	1.000
DMC 676	676	763	0	0	0	0.0	0.0	0.0	0	0	1.000
DMC 677	677	231	0	0	0	0.0	0.0	0.0	0	0	1.000
DMC 720	720	50	0	0	0	0.0	0.0	0.0	0	0	1.000
DMC 729	729	630	0	0	0	0.0	0.0	0.0	0	0	1.000
DMC 730	730	1674	0	0	0	0.0	0.0	0.0	0	0	1.000
DMC 732	732	326	0	0	0	0.0	0.0	0.0	0	0	1.000
DMC 738	738	1235	0	0	0	0.0	0.0	0.0	0	0	1.000
DMC 760	760	85	0	0	0	0.0	0.0	0.0	0	0	1.000
DMC 783	783	100	0	0	0	0.0	0.0	0.0	0	0	1.000
DMC 801	801	3263	0	0	0	0.0	0.0	0.0	0	0	2.000
DMC 831	831	732	0	0	0	0.0	0.0	0.0	0	0	1.000
DMC 833	833	222	0	0	0	0.0	0.0	0.0	0	0	1.000
DMC 839	839	1555	0	0	0	0.0	0.0	0.0	0	0	1.000
DMC 841	841	610	0	0	0	0.0	0.0	0.0	0	0	1.000
DMC 842	842	95	0	0	0	0.0	0.0	0.0	0	0	1.000
DMC 869	869	1506	0	0	0	0.0	0.0	0.0	0	0	1.000
DMC 919	919	45	0	0	0	0.0	0.0	0.0	0	0	1.000
DMC 920	920	61	0	0	0	0.0	0.0	0.0	0	0	1.000
DMC 922	922	101	0	0	0	0.0	0.0	0.0	0	0	1.000
DMC 936	936	2592	0	0	0	0.0	0.0	0.0	0	0	2.000
DMC 938	938	8974	0	0	0	0.0	0.0	0.0	0	0	4.000
DMC 945	945	2126	0	0	0	0.0	0.0	0.0	0	0	1.000
DMC 951	951	1930	0	0	0	0.0	0.0	0.0	0	0	1.000
DMC 975	975	417	0	0	0	0.0	0.0	0.0	0	0	1.000
DMC 3012	3012	754	0	0	0	0.0	0.0	0.0	0	0	1.000
DMC 3021	3021	3140	0	0	0	0.0	0.0	0.0	0	0	2.000
DMC 3031	3031	6383	0	0	0	0.0	0.0	0.0	0	0	3.000
DMC 3046	3046	203	0	0	0	0.0	0.0	0.0	0	0	1.000
DMC 3064	3064	1970	0	0	0	0.0	0.0	0.0	0	0	1.000
DMC 3346	3346	168	0	0	0	0.0	0.0	0.0	0	0	1.000
DMC 3348	3348	95	0	0	0	0.0	0.0	0.0	0	0	1.000
DMC 3362	3362	95	0	0	0	0.0	0.0	0.0	0	0	1.000
DMC 3371	3371	3808	0	0	0	0.0	0.0	0.0	0	0	2.000
DMC 3712	3712	224	0	0	0	0.0	0.0	0.0	0	0	1.000
DMC 3770	3770	961	0	0	0	0.0	0.0	0.0	0	0	1.000
DMC 3771	3771	806	0	0	0	0.0	0.0	0.0	0	0	1.000

Type	Number	Full	Half	Quarter	Petite	Back(in)	Str(in)	Spec(in)	French	Bead	Skein	Est.
DMC	3772	1498	0	0	0	0.0	0.0	0.0	0	0	1.000	
DMC	3779	166	0	0	0	0.0	0.0	0.0	0	0	1.000	
DMC	3826	72	0	0	0	0.0	0.0	0.0	0	0	1.000	
DMC	3827	755	0	0	0	0.0	0.0	0.0	0	0	1.000	
DMC	3828	1968	0	0	0	0.0	0.0	0.0	0	0	1.000	
DMC	3829	918	0	0	0	0.0	0.0	0.0	0	0	1.000	
DMC	3830	223	0	0	0	0.0	0.0	0.0	0	0	1.000	
DMC	3854	97	0	0	0	0.0	0.0	0.0	0	0	1.000	
DMC	3856	3602	0	0	0	0.0	0.0	0.0	0	0	2.000	
DMC	3858	608	0	0	0	0.0	0.0	0.0	0	0	1.000	
DMC	3860	602	0	0	0	0.0	0.0	0.0	0	0	1.000	
DMC	3862	2656	0	0	0	0.0	0.0	0.0	0	0	2.000	
DMC	3864	696	0	0	0	0.0	0.0	0.0	0	0	1.000	